



Crystal structure of 4-(6-chloro-4-oxo-4*H*-chromen-3-yl)-2-methylamino-3-nitro-4*H*,5*H*-pyrano[3,2-*c*]chromen-5-one chloroform monosolvate

Rajamani Raja,^a Subramani Kandhasamy,^b Paramasivam T. Perumal^b and A. SubbiahPandi^{a*}

^aDepartment of Physics, Presidency College (Autonomous), Chennai 600 005, India, and ^bOrganic Chemistry Division, CSIR Central Leather Research Institute, Chennai 600 020, India. *Correspondence e-mail: aspandian59@gmail.com

Received 15 June 2015; accepted 20 June 2015

Edited by H. Stoeckli-Evans, University of Neuchâtel, Switzerland

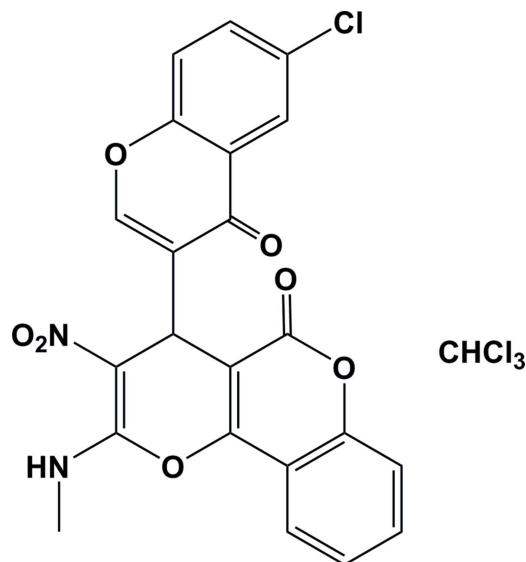
In the title compound, C₂₂H₁₄Cl₄N₂O₇, the pyran ring has an envelope conformation with the methine C atom as the flap. The chromene rings are almost planar (r.m.s. deviations of 0.027 and 0.018 Å) and their mean planes are inclined to one another by 85.61 (10)°. The mean planes of the pyran ring and the chromene ring fused to it are inclined to one another by 7.41 (13)°. The molecular structure is stabilized by an intramolecular N—H···O hydrogen bond, generating an *S*(6) ring motif. In the crystal, molecules are linked by pairs of N—H···O hydrogen bonds, forming inversion dimers with an *R*₂²(12) ring motif. The dimers are linked by pairs of C—H···O hydrogen bonds, enclosing *R*₂²(18) ring motifs, forming chains along [010]. Within the chains there are C—H···π interactions. The chains are linked *via* slipped parallel π–π interactions, forming a three-dimensional structure [the shortest inter-centroid distance is 3.7229 (19) Å].

Keywords: crystal structure; chromene; chromones; pyran; hydrogen bonding; C—H···π interactions; π–π interactions; inversion dimers.

CCDC reference: 1055442

1. Related literature

For the uses and biological importance of chromones, see: Miao & Yang (2000); Lin *et al.* (2000); Larget *et al.* (2000); Groweiss *et al.* (2000); Deng *et al.* (2000); Pietta (2000); Mori *et al.* (1998); Montaña *et al.* (2007); Hsu *et al.* (2006); Beecher (2003). For a related structure, see: Narayanan *et al.* (2013).



2. Experimental

2.1. Crystal data

C₂₂H₁₃ClN₂O₇·CHCl₃
M_r = 572.16
 Triclinic, *P* $\bar{1}$
a = 8.3716 (2) Å
b = 11.6435 (3) Å
c = 13.1018 (4) Å
 α = 86.455 (1)°
 β = 88.251 (1)°

γ = 69.841 (1)°
V = 1196.51 (6) Å³
Z = 2
 Mo *K*α radiation
 μ = 0.54 mm⁻¹
T = 293 K
 0.25 × 0.20 × 0.20 mm

2.2. Data collection

Bruker SMART APEXII CCD
 diffractometer
 Absorption correction: multi-scan
 (*SADABS*; Bruker, 2008)
*T*_{min} = 0.878, *T*_{max} = 0.897

15560 measured reflections
 4208 independent reflections
 3451 reflections with *I* > 2σ(*I*)
*R*_{int} = 0.019

2.3. Refinement

R[*F*² > 2σ(*F*²)] = 0.055
wR(*F*²) = 0.154
S = 1.03
 4208 reflections

325 parameters
 H-atom parameters constrained
 $\Delta\rho_{\max}$ = 0.73 e Å⁻³
 $\Delta\rho_{\min}$ = -0.89 e Å⁻³

Table 1

Hydrogen-bond geometry (Å, °).

*Cg*4 is the centroid of the C2–C7 ring.

<i>D</i> —H··· <i>A</i>	<i>D</i> —H	H··· <i>A</i>	<i>D</i> ··· <i>A</i>	<i>D</i> —H··· <i>A</i>
N2—H2···O6	0.86	1.00	2.604 (3)	127
N2—H2···O6 ⁱ	0.86	2.17	2.910 (3)	144
C6—H6···O2 ⁱⁱ	0.96	2.49	3.186 (4)	132
C10—H10B··· <i>Cg</i> 4 ⁱⁱ	0.98	2.98	3.719 (4)	134

Symmetry codes: (i) $-x, -y, -z$; (ii) $-x, -y + 1, -z$.

Data collection: *APEX2* (Bruker, 2008); cell refinement: *SAINT* (Bruker, 2008); data reduction: *SAINT*; program(s) used to solve structure: *SHELXS97* (Sheldrick, 2008); program(s) used to refine

structure: *SHELXL97* (Sheldrick, 2008); molecular graphics: *PLATON* (Spek, 2009); software used to prepare material for publication: *SHELXL97* and *PLATON* (Spek, 2009).

Acknowledgements

The authors thank the Department of Chemistry, IIT, Chennai, India, for the X-ray intensity data collection.

Supporting information for this paper is available from the IUCr electronic archives (Reference: SU5158).

References

- Beecher, G. R. (2003). *J. Nutr.* **133**, 3248S3254S.
- Bruker (2008). *APEX2*, *SAINTE* and *SADABS*. Bruker AXS Inc., Madison, Wisconsin, USA.
- Deng, Y., Lee, J. P., Tianasoa-Ramamonjy, M., Snyder, J. K., Des Etages, S. A., Kanada, D., Snyder, M. P. & Turner, C. J. (2000). *J. Nat. Prod.* **63**, 1082–1089.
- Groweiss, A., Cardellina, J. H. & Boyd, M. R. (2000). *J. Nat. Prod.* **63**, 1537–1539.
- Hsu, Y., Kuo, L., Tzeng, W. & Lin, C. (2006). *Food Chem. Toxicol.* **44**, 704–713.
- Larget, R., Lockhart, B., Renard, P. & Largeton, M. (2000). *Bioorg. Med. Chem. Lett.* **10**, 835–838.
- Lin, L. C., Kuo, Y. C. & Chou, C. J. (2000). *J. Nat. Prod.* **63**, 627–630.
- Miao, H. & Yang, Z. (2000). *Org. Lett.* **2**, 1765–1768.
- Montaña, M. P., Pappano, N., Giordano, S., Molina, P., Debattista, N. B. & García, N. (2007). *Pharmazie*, **62**, 72–76.
- Mori, K., Audran, G. & Monti, H. (1998). *Synlett*, **1998**, 259–260.
- Narayanan, P., Kamalraja, J., Perumal, P. T. & Sethusankar, K. (2013). *Acta Cryst.* **E69**, o931–o932.
- Pietta, P. J. (2000). *J. Nat. Prod.* **63**, 1035–1042.
- Sheldrick, G. M. (2008). *Acta Cryst.* **A64**, 112–122.
- Spek, A. L. (2009). *Acta Cryst.* **D65**, 148–155.

supporting information

Acta Cryst. (2015). E71, o512–o513 [doi:10.1107/S2056989015011810]

Crystal structure of 4-(6-chloro-4-oxo-4*H*-chromen-3-yl)-2-methylamino-3-nitro-4*H*,5*H*-pyrano[3,2-*c*]chromen-5-one chloroform monosolvate

Rajamani Raja, Subramani Kandhasamy, Paramasivam T. Perumal and A. SubbiahPandi

S1. Structural commentary

\ Chromones constitute a major class of naturally occurring compounds and interest in their chemistry continues unabated because of their usefulness as biologically active agents (Miao & Yang, 2000). Some of the biological activities attributed to chromone derivatives include cytotoxic anticancer (Lim *et al.*, 2000), neuroprotective (Larget *et al.*, 2000), HIV-inhibitory (Groveiss *et al.*, 2000), antimicrobial (Deng *et al.*, 2000), antifungal (Mori *et al.*, 1998) and antioxidant activities (Pietta, 2000). Chromone derivatives are present in large amounts in the human diet (Beecher, 2003), due to their abundance in plants and their low mammalian toxicity. They are known to exhibit antioxidant (Montaña *et al.*, 2007), anti-inflammatory, antimicrobial, antihypertensive, antiplatelet, gastroprotective, antitumour (Hsu *et al.*, 2006) and antiallergic activities.

The molecular structure of the title compound is illustrated in Fig. 1. It exhibits structural similarities with a related chromenone derivative, 4-(4-Bromophenyl)-2-methylamino-3-nitro-5,6,7,8-tetrahydro-4*H*-chromen-5-one (Narayanan *et al.*, 2013). The chromene rings (A = O4/C1—C8/C13) and (B = O1/C14—C22) are almost planar (r.m.s. deviations of 0.027 and 0.018 Å, respectively) and normal to one another with a dihedral angle of 85.61 (10)° between their mean planes. The pyran ring (C = O5/C8/C9/C11—C13) has an envelope conformation with atom C12 as the flap. Its mean plane is inclined to the mean plane of the chromene ring A, to which it is fused, by 7.41 (13)°. The nitro group is almost coplanar to the pyran ring, as indicated by torsion angles C12—C11—N1—O7 = 1.2 (4)° and C9—C11—N1—O6 = 2.5 (5)°. The molecular structure is stabilized by an intramolecular N—H···O hydrogen bond, which generates an S(6) ring motif (Table 1 and Fig. 1).

In the crystal, molecules are linked by a pair of N—H···O hydrogen bonds forming inversion dimers with an R²₂(12) ring motif; Table 1 and Fig. 2. The dimers are linked by a pair of C—H···O hydrogen bonds, enclosing R²₂((18) ring motifs, and forming chains along [010]. Within the chains there are C—H···π interactions (Table 1). The chains are linked via slipped parallel π-π interactions forming a three-dimensional structure [Cg2···Cg2ⁱ = 3.9337 (16) Å, inter-planar distance = 3.5746 (12) Å, slippage 1.642 Å; Cg5···Cg5ⁱⁱ = 3.7229 (19) Å, inter-planar distance = 3.4023 (14) Å, slippage = 1.511 Å; symmetry codes: (i) -x-1, -y+1, -z; (ii) -x, -y+1, -z+1].

S2. Synthesis and crystallization

A three component coupling reaction, involving 4-hydroxycoumarin (0.81 g, 5 mmol), 6-chloro-4-oxo-4*H*-chromene-3-carbaldehyde (0.87 g, 5 mmol) and NMSM (0.74 g, 5 mmol), was carried out in EtOH at room temperature (3 h) in the presence of triethylamine (0.1 eq) as catalyst. Upon completion of the reaction, the mixture was filtered, and washed with ethanol to obtain the desired product as a white solid. Using this combination of ethanol and triethylamine gave an excellent result with a shorter than normal reaction time and an overall yield of 83 %. The title compound was recrystallized from chloroform giving colourless block-like crystals.

S3. Refinement

Crystal data, data collection and structure refinement details are summarized in Table 2. The N and C-bound H atoms were positioned geometrically and allowed to ride on their parent atoms: N—H = 0.86 Å, C—H = 0.93–0.98 Å with $U_{\text{iso}}(\text{H}) = 1.5U_{\text{eq}}(\text{C})$ for methyl H atoms and $1.2U_{\text{eq}}(\text{N,C})$ for all other H atoms.

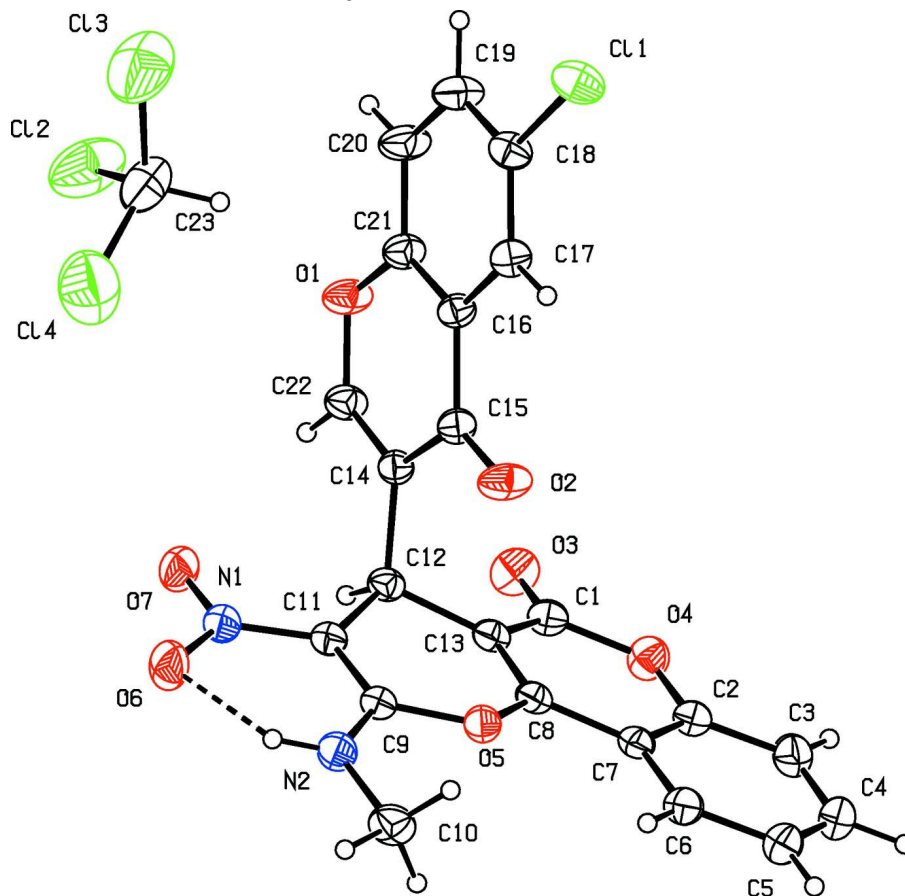


Figure 1

The molecular structure of the title compound, with atom labelling. Displacement ellipsoids are drawn at the 30% probability level. The intramolecular N—H...O hydrogen bond is shown as a dashed line (see Table 1 for details)

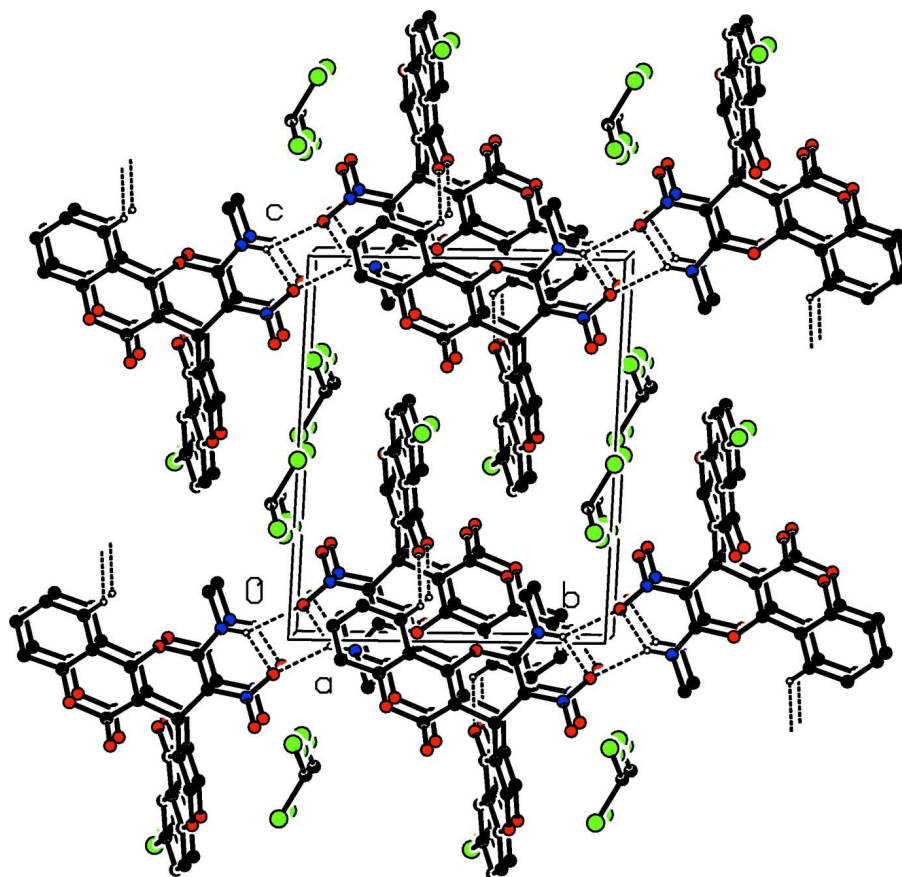


Figure 2

The crystal packing of the title compound, viewed along the *a* axis. The hydrogen bonds are shown as dashed lines (see Table 1 for details). H atoms not involved in these interactions have been omitted for clarity.

4-(6-Chloro-4-oxo-4H-chromen-3-yl)-2-methylamino-3-nitro-4H,5H-pyrano[3,2-c]chromen-5-one chloroform monosolvate

Crystal data

$C_{22}H_{13}ClN_2O_7 \cdot CHCl_3$

$M_r = 572.16$

Triclinic, $P\bar{1}$

Hall symbol: $-P\ 1$

$a = 8.3716\ (2)\ \text{\AA}$

$b = 11.6435\ (3)\ \text{\AA}$

$c = 13.1018\ (4)\ \text{\AA}$

$\alpha = 86.455\ (1)^\circ$

$\beta = 88.251\ (1)^\circ$

$\gamma = 69.841\ (1)^\circ$

$V = 1196.51\ (6)\ \text{\AA}^3$

$Z = 2$

$F(000) = 580$

$D_x = 1.588\ \text{Mg m}^{-3}$

Mo $K\alpha$ radiation, $\lambda = 0.71073\ \text{\AA}$

Cell parameters from 3451 reflections

$\theta = 1.6\text{--}25.0^\circ$

$\mu = 0.54\ \text{mm}^{-1}$

$T = 293\ \text{K}$

Block, colourless

$0.25 \times 0.20 \times 0.20\ \text{mm}$

Data collection

Bruker SMART APEXII CCD

diffractometer

Radiation source: fine-focus sealed tube

Graphite monochromator

ω and φ scans

Absorption correction: multi-scan

(*SADABS*; Bruker, 2008)

$T_{\min} = 0.878$, $T_{\max} = 0.897$

15560 measured reflections
 4208 independent reflections
 3451 reflections with $I > 2\sigma(I)$
 $R_{\text{int}} = 0.019$

$\theta_{\text{max}} = 25.0^\circ$, $\theta_{\text{min}} = 1.6^\circ$
 $h = -9 \rightarrow 9$
 $k = -13 \rightarrow 13$
 $l = -15 \rightarrow 15$

Refinement

Refinement on F^2
 Least-squares matrix: full
 $R[F^2 > 2\sigma(F^2)] = 0.055$
 $wR(F^2) = 0.154$
 $S = 1.03$
 4208 reflections
 325 parameters
 0 restraints
 Primary atom site location: structure-invariant
 direct methods

Secondary atom site location: difference Fourier
 map
 Hydrogen site location: inferred from
 neighbouring sites
 H-atom parameters constrained
 $w = 1/[\sigma^2(F_o^2) + (0.0685P)^2 + 1.4008P]$
 where $P = (F_o^2 + 2F_c^2)/3$
 $(\Delta/\sigma)_{\text{max}} < 0.001$
 $\Delta\rho_{\text{max}} = 0.73 \text{ e } \text{\AA}^{-3}$
 $\Delta\rho_{\text{min}} = -0.89 \text{ e } \text{\AA}^{-3}$

Special details

Geometry. All e.s.d.'s (except the e.s.d. in the dihedral angle between two l.s. planes) are estimated using the full covariance matrix. The cell e.s.d.'s are taken into account individually in the estimation of e.s.d.'s in distances, angles and torsion angles; correlations between e.s.d.'s in cell parameters are only used when they are defined by crystal symmetry. An approximate (isotropic) treatment of cell e.s.d.'s is used for estimating e.s.d.'s involving l.s. planes.

Refinement. Refinement of F^2 against ALL reflections. The weighted R -factor wR and goodness of fit S are based on F^2 , conventional R -factors R are based on F , with F set to zero for negative F^2 . The threshold expression of $F^2 > \sigma(F^2)$ is used only for calculating R -factors(gt) *etc.* and is not relevant to the choice of reflections for refinement. R -factors based on F^2 are statistically about twice as large as those based on F , and R -factors based on ALL data will be even larger.

Fractional atomic coordinates and isotropic or equivalent isotropic displacement parameters (\AA^2)

	<i>x</i>	<i>y</i>	<i>z</i>	$U_{\text{iso}}^*/U_{\text{eq}}$
C1	-0.5208 (4)	0.5466 (3)	0.1998 (2)	0.0413 (7)
C2	-0.4799 (4)	0.6959 (3)	0.0737 (2)	0.0431 (7)
C3	-0.5346 (5)	0.8171 (3)	0.0384 (3)	0.0557 (8)
H3	-0.6217	0.8758	0.0718	0.067*
C4	-0.4574 (5)	0.8492 (3)	-0.0477 (3)	0.0614 (10)
H4	-0.4933	0.9306	-0.0724	0.074*
C5	-0.3270 (5)	0.7624 (3)	-0.0982 (3)	0.0573 (9)
H5	-0.2765	0.7858	-0.1562	0.069*
C6	-0.2729 (4)	0.6421 (3)	-0.0623 (2)	0.0472 (7)
H6	-0.1853	0.5839	-0.0959	0.057*
C7	-0.3495 (4)	0.6070 (3)	0.0248 (2)	0.0382 (6)
C8	-0.3013 (3)	0.4847 (2)	0.0697 (2)	0.0354 (6)
C9	-0.1360 (4)	0.2793 (2)	0.0413 (2)	0.0366 (6)
C10	0.0238 (5)	0.2595 (3)	-0.1213 (2)	0.0539 (8)
H10A	0.0962	0.1924	-0.1587	0.081*
H10B	0.0864	0.3110	-0.1046	0.081*
H10C	-0.0723	0.3063	-0.1623	0.081*
C11	-0.2074 (4)	0.2403 (2)	0.1280 (2)	0.0376 (6)
C12	-0.3170 (3)	0.3268 (2)	0.2033 (2)	0.0353 (6)
H12	-0.4176	0.3036	0.2181	0.042*
C13	-0.3764 (3)	0.4543 (2)	0.1542 (2)	0.0356 (6)

C14	-0.2271 (3)	0.3199 (2)	0.30355 (19)	0.0339 (6)
C15	-0.0778 (3)	0.3561 (3)	0.3073 (2)	0.0368 (6)
C16	-0.0029 (3)	0.3416 (2)	0.4100 (2)	0.0353 (6)
C17	0.1418 (3)	0.3715 (3)	0.4272 (2)	0.0397 (6)
H17	0.1959	0.3994	0.3731	0.048*
C18	0.2030 (4)	0.3593 (3)	0.5248 (2)	0.0433 (7)
C19	0.1236 (4)	0.3189 (3)	0.6067 (2)	0.0561 (8)
H19	0.1665	0.3122	0.6723	0.067*
C20	-0.0170 (5)	0.2890 (4)	0.5912 (2)	0.0574 (9)
H20	-0.0704	0.2613	0.6457	0.069*
C21	-0.0794 (4)	0.3003 (3)	0.4929 (2)	0.0419 (7)
C22	-0.2851 (4)	0.2778 (3)	0.3880 (2)	0.0430 (7)
H22	-0.3792	0.2537	0.3815	0.052*
C23	-0.3248 (6)	0.0682 (4)	0.6398 (4)	0.0809 (12)
H23	-0.3592	0.1565	0.6229	0.097*
N1	-0.1828 (3)	0.1178 (2)	0.14793 (19)	0.0454 (6)
N2	-0.0351 (3)	0.2123 (2)	-0.02750 (18)	0.0451 (6)
H2	-0.0009	0.1341	-0.0163	0.054*
O1	-0.2193 (3)	0.2669 (2)	0.48229 (15)	0.0523 (6)
O2	-0.0185 (3)	0.3960 (2)	0.23230 (15)	0.0562 (6)
O3	-0.6066 (3)	0.5286 (2)	0.26914 (18)	0.0568 (6)
O4	-0.5634 (3)	0.66546 (19)	0.15818 (17)	0.0503 (5)
O5	-0.1722 (2)	0.40090 (17)	0.01840 (14)	0.0398 (5)
O6	-0.0894 (4)	0.0396 (2)	0.08874 (18)	0.0655 (7)
O7	-0.2521 (3)	0.0856 (2)	0.22354 (17)	0.0560 (6)
Cl1	0.38122 (10)	0.39733 (9)	0.54961 (7)	0.0587 (3)
Cl2	-0.4964 (2)	0.03955 (18)	0.70060 (11)	0.1241 (6)
Cl3	-0.1553 (2)	0.02863 (16)	0.72379 (17)	0.1416 (7)
Cl4	-0.2684 (3)	-0.00705 (16)	0.52616 (15)	0.1326 (6)

Atomic displacement parameters (\AA^2)

	U^{11}	U^{22}	U^{33}	U^{12}	U^{13}	U^{23}
C1	0.0386 (15)	0.0466 (17)	0.0392 (16)	-0.0147 (13)	-0.0040 (13)	-0.0031 (13)
C2	0.0481 (17)	0.0430 (16)	0.0404 (16)	-0.0180 (13)	-0.0097 (13)	-0.0012 (13)
C3	0.064 (2)	0.0419 (17)	0.060 (2)	-0.0148 (15)	-0.0122 (17)	-0.0039 (15)
C4	0.085 (3)	0.0420 (18)	0.061 (2)	-0.0267 (18)	-0.020 (2)	0.0082 (16)
C5	0.079 (2)	0.053 (2)	0.0471 (18)	-0.0340 (18)	-0.0067 (17)	0.0062 (15)
C6	0.0574 (19)	0.0501 (18)	0.0400 (16)	-0.0261 (15)	-0.0042 (14)	-0.0002 (13)
C7	0.0446 (16)	0.0422 (15)	0.0331 (14)	-0.0210 (13)	-0.0075 (12)	-0.0025 (12)
C8	0.0381 (14)	0.0401 (15)	0.0313 (14)	-0.0168 (12)	-0.0034 (11)	-0.0061 (11)
C9	0.0428 (15)	0.0372 (15)	0.0310 (14)	-0.0145 (12)	-0.0019 (12)	-0.0045 (11)
C10	0.062 (2)	0.065 (2)	0.0367 (16)	-0.0250 (17)	0.0116 (15)	-0.0102 (15)
C11	0.0458 (16)	0.0386 (15)	0.0302 (14)	-0.0163 (12)	-0.0013 (12)	-0.0037 (11)
C12	0.0365 (14)	0.0426 (15)	0.0305 (14)	-0.0184 (12)	0.0007 (11)	-0.0027 (11)
C13	0.0368 (14)	0.0418 (15)	0.0313 (14)	-0.0167 (12)	-0.0033 (11)	-0.0050 (11)
C14	0.0375 (14)	0.0355 (14)	0.0292 (13)	-0.0130 (11)	0.0035 (11)	-0.0038 (11)
C15	0.0370 (14)	0.0421 (15)	0.0312 (14)	-0.0138 (12)	0.0050 (11)	-0.0024 (11)

C16	0.0344 (14)	0.0395 (14)	0.0299 (13)	-0.0102 (11)	0.0023 (11)	-0.0017 (11)
C17	0.0350 (14)	0.0467 (16)	0.0361 (15)	-0.0128 (12)	0.0056 (12)	-0.0031 (12)
C18	0.0346 (15)	0.0508 (17)	0.0432 (16)	-0.0115 (13)	-0.0014 (12)	-0.0096 (13)
C19	0.060 (2)	0.078 (2)	0.0334 (16)	-0.0274 (18)	-0.0082 (15)	0.0017 (15)
C20	0.065 (2)	0.086 (2)	0.0299 (16)	-0.0390 (19)	-0.0015 (15)	0.0069 (15)
C21	0.0418 (16)	0.0542 (17)	0.0327 (15)	-0.0208 (14)	0.0005 (12)	0.0008 (12)
C22	0.0453 (16)	0.0580 (18)	0.0332 (15)	-0.0276 (14)	0.0001 (12)	-0.0011 (13)
C23	0.076 (3)	0.074 (3)	0.089 (3)	-0.026 (2)	-0.010 (2)	0.026 (2)
N1	0.0586 (16)	0.0408 (14)	0.0381 (13)	-0.0187 (12)	0.0001 (12)	-0.0028 (11)
N2	0.0546 (15)	0.0425 (13)	0.0366 (13)	-0.0144 (12)	0.0062 (11)	-0.0074 (11)
O1	0.0572 (13)	0.0834 (16)	0.0298 (10)	-0.0432 (12)	-0.0001 (9)	0.0079 (10)
O2	0.0555 (13)	0.0952 (18)	0.0306 (11)	-0.0442 (13)	0.0035 (9)	0.0075 (11)
O3	0.0478 (13)	0.0641 (14)	0.0536 (14)	-0.0142 (11)	0.0137 (11)	-0.0030 (11)
O4	0.0484 (12)	0.0450 (12)	0.0520 (13)	-0.0091 (10)	0.0032 (10)	-0.0036 (10)
O5	0.0486 (11)	0.0392 (10)	0.0329 (10)	-0.0168 (9)	0.0070 (9)	-0.0046 (8)
O6	0.0964 (19)	0.0393 (12)	0.0545 (14)	-0.0152 (12)	0.0152 (13)	-0.0105 (11)
O7	0.0748 (16)	0.0496 (13)	0.0484 (13)	-0.0290 (12)	0.0069 (11)	0.0030 (10)
C11	0.0402 (4)	0.0789 (6)	0.0602 (5)	-0.0223 (4)	-0.0049 (4)	-0.0152 (4)
C12	0.1055 (10)	0.1842 (16)	0.0994 (10)	-0.0799 (11)	-0.0120 (8)	0.0481 (10)
C13	0.1019 (11)	0.1299 (13)	0.1951 (18)	-0.0466 (10)	-0.0691 (12)	0.0503 (12)
C14	0.1560 (15)	0.1120 (11)	0.1358 (14)	-0.0537 (11)	0.0268 (12)	-0.0203 (10)

Geometric parameters (Å, °)

C1—O3	1.194 (4)	C12—C14	1.518 (4)
C1—O4	1.385 (4)	C12—H12	0.9800
C1—C13	1.453 (4)	C14—C22	1.328 (4)
C2—C3	1.379 (4)	C14—C15	1.454 (4)
C2—O4	1.383 (4)	C15—O2	1.225 (3)
C2—C7	1.391 (4)	C15—C16	1.477 (4)
C3—C4	1.378 (5)	C16—C21	1.387 (4)
C3—H3	0.9300	C16—C17	1.399 (4)
C4—C5	1.389 (5)	C17—C18	1.373 (4)
C4—H4	0.9300	C17—H17	0.9300
C5—C6	1.372 (4)	C18—C19	1.388 (4)
C5—H5	0.9300	C18—C11	1.740 (3)
C6—C7	1.400 (4)	C19—C20	1.362 (5)
C6—H6	0.9300	C19—H19	0.9300
C7—C8	1.433 (4)	C20—C21	1.387 (4)
C8—C13	1.344 (4)	C20—H20	0.9300
C8—O5	1.372 (3)	C21—O1	1.369 (3)
C9—N2	1.311 (4)	C22—O1	1.350 (3)
C9—O5	1.358 (3)	C22—H22	0.9300
C9—C11	1.392 (4)	C23—C13	1.737 (5)
C10—N2	1.457 (4)	C23—C14	1.744 (5)
C10—H10A	0.9600	C23—C12	1.743 (5)
C10—H10B	0.9600	C23—H23	0.9800
C10—H10C	0.9600	N1—O7	1.236 (3)

C11—N1	1.378 (4)	N1—O6	1.266 (3)
C11—C12	1.504 (4)	N2—H2	0.8600
C12—C13	1.502 (4)		
O3—C1—O4	117.3 (3)	C1—C13—C12	118.3 (2)
O3—C1—C13	125.8 (3)	C22—C14—C15	120.2 (2)
O4—C1—C13	116.9 (3)	C22—C14—C12	118.9 (2)
C3—C2—O4	117.4 (3)	C15—C14—C12	120.8 (2)
C3—C2—C7	121.5 (3)	O2—C15—C14	123.3 (2)
O4—C2—C7	121.2 (3)	O2—C15—C16	122.4 (3)
C4—C3—C2	118.5 (3)	C14—C15—C16	114.3 (2)
C4—C3—H3	120.7	C21—C16—C17	118.4 (2)
C2—C3—H3	120.7	C21—C16—C15	119.8 (2)
C3—C4—C5	121.3 (3)	C17—C16—C15	121.8 (2)
C3—C4—H4	119.4	C18—C17—C16	119.2 (3)
C5—C4—H4	119.4	C18—C17—H17	120.4
C6—C5—C4	119.9 (3)	C16—C17—H17	120.4
C6—C5—H5	120.1	C17—C18—C19	121.4 (3)
C4—C5—H5	120.1	C17—C18—C11	120.6 (2)
C5—C6—C7	120.0 (3)	C19—C18—C11	118.0 (2)
C5—C6—H6	120.0	C20—C19—C18	120.1 (3)
C7—C6—H6	120.0	C20—C19—H19	120.0
C2—C7—C6	118.9 (3)	C18—C19—H19	120.0
C2—C7—C8	116.5 (3)	C19—C20—C21	119.0 (3)
C6—C7—C8	124.6 (3)	C19—C20—H20	120.5
C13—C8—O5	122.9 (2)	C21—C20—H20	120.5
C13—C8—C7	123.1 (3)	O1—C21—C20	116.0 (3)
O5—C8—C7	114.0 (2)	O1—C21—C16	122.1 (2)
N2—C9—O5	111.8 (2)	C20—C21—C16	121.9 (3)
N2—C9—C11	128.3 (3)	C14—C22—O1	125.6 (3)
O5—C9—C11	119.9 (2)	C14—C22—H22	117.2
N2—C10—H10A	109.5	O1—C22—H22	117.2
N2—C10—H10B	109.5	C13—C23—C14	112.0 (3)
H10A—C10—H10B	109.5	C13—C23—C12	109.4 (2)
N2—C10—H10C	109.5	C14—C23—C12	111.7 (3)
H10A—C10—H10C	109.5	C13—C23—H23	107.9
H10B—C10—H10C	109.5	C14—C23—H23	107.9
N1—C11—C9	120.6 (2)	C12—C23—H23	107.9
N1—C11—C12	116.3 (2)	O7—N1—O6	120.7 (2)
C9—C11—C12	123.1 (2)	O7—N1—C11	119.6 (2)
C13—C12—C11	108.8 (2)	O6—N1—C11	119.7 (2)
C13—C12—C14	111.9 (2)	C9—N2—C10	125.4 (3)
C11—C12—C14	112.5 (2)	C9—N2—H2	117.3
C13—C12—H12	107.8	C10—N2—H2	117.3
C11—C12—H12	107.8	C22—O1—C21	117.9 (2)
C14—C12—H12	107.8	C2—O4—C1	122.5 (2)
C8—C13—C1	119.5 (3)	C9—O5—C8	119.7 (2)
C8—C13—C12	122.1 (2)		

O4—C2—C3—C4	-177.9 (3)	C12—C14—C15—O2	1.5 (4)
C7—C2—C3—C4	0.2 (5)	C22—C14—C15—C16	-0.1 (4)
C2—C3—C4—C5	-0.2 (5)	C12—C14—C15—C16	-178.8 (2)
C3—C4—C5—C6	-0.1 (5)	O2—C15—C16—C21	177.6 (3)
C4—C5—C6—C7	0.2 (5)	C14—C15—C16—C21	-2.1 (4)
C3—C2—C7—C6	-0.1 (4)	O2—C15—C16—C17	-0.7 (4)
O4—C2—C7—C6	178.0 (2)	C14—C15—C16—C17	179.6 (2)
C3—C2—C7—C8	178.8 (3)	C21—C16—C17—C18	-0.1 (4)
O4—C2—C7—C8	-3.2 (4)	C15—C16—C17—C18	178.2 (3)
C5—C6—C7—C2	-0.1 (4)	C16—C17—C18—C19	-0.5 (4)
C5—C6—C7—C8	-178.9 (3)	C16—C17—C18—C11	-179.2 (2)
C2—C7—C8—C13	0.4 (4)	C17—C18—C19—C20	0.7 (5)
C6—C7—C8—C13	179.2 (3)	C11—C18—C19—C20	179.5 (3)
C2—C7—C8—O5	-180.0 (2)	C18—C19—C20—C21	-0.4 (6)
C6—C7—C8—O5	-1.2 (4)	C19—C20—C21—O1	179.0 (3)
N2—C9—C11—N1	-3.6 (5)	C19—C20—C21—C16	-0.2 (5)
O5—C9—C11—N1	174.8 (2)	C17—C16—C21—O1	-178.7 (3)
N2—C9—C11—C12	177.8 (3)	C15—C16—C21—O1	3.0 (4)
O5—C9—C11—C12	-3.7 (4)	C17—C16—C21—C20	0.4 (5)
N1—C11—C12—C13	-161.8 (2)	C15—C16—C21—C20	-177.9 (3)
C9—C11—C12—C13	16.9 (4)	C15—C14—C22—O1	1.6 (5)
N1—C11—C12—C14	73.6 (3)	C12—C14—C22—O1	-179.7 (3)
C9—C11—C12—C14	-107.8 (3)	C9—C11—N1—O7	-177.5 (3)
O5—C8—C13—C1	-175.4 (2)	C12—C11—N1—O7	1.1 (4)
C7—C8—C13—C1	4.2 (4)	C9—C11—N1—O6	2.6 (4)
O5—C8—C13—C12	4.0 (4)	C12—C11—N1—O6	-178.7 (3)
C7—C8—C13—C12	-176.5 (2)	O5—C9—N2—C10	-4.0 (4)
O3—C1—C13—C8	173.3 (3)	C11—C9—N2—C10	174.6 (3)
O4—C1—C13—C8	-6.0 (4)	C14—C22—O1—C21	-0.9 (5)
O3—C1—C13—C12	-6.0 (4)	C20—C21—O1—C22	179.3 (3)
O4—C1—C13—C12	174.6 (2)	C16—C21—O1—C22	-1.5 (4)
C11—C12—C13—C8	-16.9 (3)	C3—C2—O4—C1	179.3 (3)
C14—C12—C13—C8	108.1 (3)	C7—C2—O4—C1	1.2 (4)
C11—C12—C13—C1	162.5 (2)	O3—C1—O4—C2	-176.0 (3)
C14—C12—C13—C1	-72.6 (3)	C13—C1—O4—C2	3.4 (4)
C13—C12—C14—C22	123.2 (3)	N2—C9—O5—C8	167.0 (2)
C11—C12—C14—C22	-113.9 (3)	C11—C9—O5—C8	-11.7 (4)
C13—C12—C14—C15	-58.0 (3)	C13—C8—O5—C9	11.8 (4)
C11—C12—C14—C15	64.9 (3)	C7—C8—O5—C9	-167.8 (2)
C22—C14—C15—O2	-179.7 (3)		

Hydrogen-bond geometry (\AA , $^\circ$)

Cg4 is the centroid of the C2–C7 ring.

<i>D</i> —H... <i>A</i>	<i>D</i> —H	H... <i>A</i>	<i>D</i> ... <i>A</i>	<i>D</i> —H... <i>A</i>
N2—H2...O6	0.86	1.00	2.604 (3)	127
N2—H2...O6 ⁱ	0.86	2.17	2.910 (3)	144

C6—H6···O2 ⁱⁱ	0.96	2.49	3.186 (4)	132
C10—H10B···Cg4 ⁱⁱ	0.98	2.98	3.719 (4)	134

Symmetry codes: (i) $-x, -y, -z$; (ii) $-x, -y+1, -z$.