

Acta Crystallographica Section E

## Structure Reports

Online

ISSN 1600-5368

3-Bromo-*N*-(3,5-di-*tert*-butylphenyl)-propanamideAnwar Abo-Amer,<sup>a</sup> Mahmoud Al-Refai,<sup>a</sup> Richard J. Puddephatt<sup>b</sup> and Basem F. Ali<sup>a\*</sup><sup>a</sup>Department of Chemistry, Al al-Bayt University, Mafraq 25113, Jordan, and<sup>b</sup>Department of Chemistry, University of Western Ontario, London, N6A 5B7, Canada

Correspondence e-mail: bfali@aabu.edu.jo

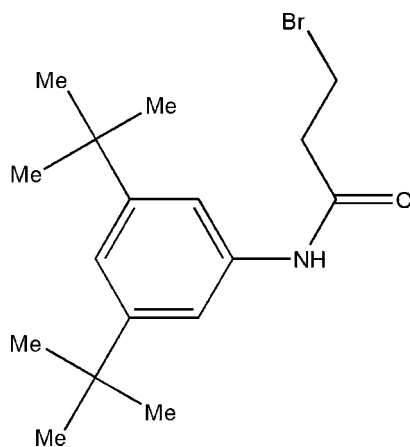
Received 27 March 2014; accepted 25 May 2014

Key indicators: single-crystal X-ray study;  $T = 150$  K; mean  $\sigma(\text{C}-\text{C}) = 0.004$  Å;  $R$  factor = 0.049;  $wR$  factor = 0.143; data-to-parameter ratio = 24.2.

The title compound,  $\text{C}_{17}\text{H}_{26}\text{BrNO}$ , exhibits a small twist between the amide residue and the benzene ring [ $\text{C}-\text{N}-\text{C}-\text{C}$  torsion angle =  $29.4(5)^\circ$ ]. In the crystal, the amido NH group is involved in  $\text{N}-\text{H}\cdots\text{O}$  hydrogen bonding, which connects molecules into chains parallel to the  $c$  axis.

## Related literature

For the related structure of a derivative with an alkyl-*N*-aryl substituent, see: Palakshamurthy *et al.* (2014), with an alkyl-*N*-phenylsulfonyl substituent, see: Shakuntala *et al.* (2011) and with a chloro-*N*-phenyl substituent, see: Betz *et al.* (2011). For details of the synthesis, see: Bentiss & Lagrenée (1999); Hill *et al.* (2007).



## Experimental

## Crystal data

$\text{C}_{17}\text{H}_{26}\text{BrNO}$   
 $M_r = 340.30$   
 Monoclinic,  $P2_1/c$   
 $a = 15.666(2)$  Å  
 $b = 11.4885(16)$  Å  
 $c = 9.7829(14)$  Å  
 $\beta = 97.436(4)^\circ$   
 $V = 1745.9(4)$  Å<sup>3</sup>  
 $Z = 4$   
 Mo  $K\alpha$  radiation  
 $\mu = 2.35$  mm<sup>-1</sup>  
 $T = 150$  K  
 $0.40 \times 0.20 \times 0.11$  mm

## Data collection

Bruker APEXII CCD diffractometer  
 Absorption correction: multi-scan (SADABS; Bruker, 2013)  
 $T_{\min} = 0.455$ ,  $T_{\max} = 0.789$   
 21557 measured reflections  
 4005 independent reflections  
 2738 reflections with  $I > 2\sigma(I)$   
 $R_{\text{int}} = 0.055$

## Refinement

$R[F^2 > 2\sigma(F^2)] = 0.050$   
 $wR(F^2) = 0.145$   
 $S = 1.04$   
 4005 reflections  
 187 parameters  
 H-atom parameters constrained  
 $\Delta\rho_{\max} = 1.08$  e Å<sup>-3</sup>  
 $\Delta\rho_{\min} = -0.65$  e Å<sup>-3</sup>

Table 1

Hydrogen-bond geometry (Å, °).

| $D-\text{H}\cdots A$                    | $D-\text{H}$ | $\text{H}\cdots A$ | $D\cdots A$ | $D-\text{H}\cdots A$ |
|---|--------------|--------------------|-------------|----------------------|
| $\text{N1}-\text{H1C}\cdots\text{O1}^1$ | 0.88         | 2.01               | 2.889 (3)   | 174                  |

Symmetry code: (i)  $x, -y + \frac{1}{2}, z + \frac{1}{2}$ .

Data collection: APEX2 (Bruker, 2013); cell refinement: SAINT (Bruker, 2013); data reduction: SAINT; program(s) used to solve structure: SIR92 (Altomare *et al.*, 1994); program(s) used to refine structure: SHELXL2013 (Sheldrick, 2008); molecular graphics: CrystalMaker (CrystalMaker, 2014); software used to prepare material for publication: local programs.

The authors would like to thank Dr Aneta Borecki and Dr Paul Boyle (University of Western Ontario) for their help in data collection and refinement.

Supporting information for this paper is available from the IUCr electronic archives (Reference: NK2223).

## References

- Altomare, A., Casciarano, G., Giacovazzo, C., Guagliardi, A., Burla, M. C., Polidori, G. & Camalli, M. (1994). *J. Appl. Cryst.* **27**, 435.  
 Bentiss, F. & Lagrenée, M. (1999). *J. Heterocycl. Chem.* **36**, 1029–1032.  
 Betz, R., Gerber, T., Hosten, E., Siddegowda, M. S. & Yathirajan, H. S. (2011). *Acta Cryst.* **E67**, o2868.  
 Bruker (2013). APEX2, SAINT and SADABS. Bruker AXS Inc., Madison, Wisconsin, USA.  
 CrystalMaker Software (2014). *CrystalMaker*. CrystalMaker Software, Bicester, Oxfordshire, England. www.crystallmaker.com  
 Hill, G. S., Irwin, M. J., Levy, C. J., Rendina, L. M., Puddephatt, R. J., Andersen, R. A. & Mclean, L. (2007). *Platinum(II) Complexes of Dimethyl Sulfide*, in *Inorganic Syntheses*. New York: John Wiley & Sons Inc.  
 Palakshamurthy, B. S., Suchetan, P. A., Sreenivasa, S., Lokanath, N. K. & Madhu Chakrapani Rao, T. (2014). *Acta Cryst.* **E70**, o223.  
 Shakuntala, K., Foro, S. & Gowda, B. T. (2011). *Acta Cryst.* **E67**, o536.  
 Sheldrick, G. M. (2008). *Acta Cryst.* **A64**, 112–122.

## supporting information

*Acta Cryst.* (2014). E70, o770 [https://doi.org/10.1107/S1600536814012094]

### 3-Bromo-*N*-(3,5-di-*tert*-butylphenyl)propanamide

Anwar Abo-Amer, Mahmoud Al-Refai, Richard J. Puddephatt and Basem F. Ali

#### S1. Comment

The title compound C<sub>17</sub>H<sub>25</sub>BrNO, is a brominated derivative of a secondary amide bearing a di-*tert*-butylbenzene ring. It exhibits a small twist between the amide residue and benzene ring [the C3—N1—C4—C5 torsion angle = 29.5 (4)°]. The N—H and C=O bonds are *anti* to each other (Fig. 1), as observed in many other derivatives (Shakuntala *et al.*, 2011). In the structure, bond distances and angles are within normal range (Table 1) and comparable to reported values in amide derivatives (Palakshamurthy *et al.*, 2014, Betz *et al.*, 2011). The torsion angle of C3—N1—C4—C9 and C3—N1—C4—C5 are -153.2 (3)° and 29.5 (4)°, respectively. The amido NH group is involved in N—H···O [2.01 Å] hydrogen bonding, which connects molecules into chains parallel to *c* axis (Fig. 2).

#### S2. Experimental

Synthesis of (2,5-Bis(2-pyridyl)-1,3,4-oxadiazole)dimethylplatinum(II), [PtMe<sub>2</sub>(ox)]

A mixture of [Pt<sub>2</sub>Me<sub>4</sub>(μ-SMe<sub>2</sub>)<sub>2</sub>] (50 mg, 0.087 mmol) (Hill *et al.*, 2007) and ox (ox = 2,5-bis(2-pyridyl)-1,3,4-oxadiazole) (38 mg, 0.170 mmol) (Bentiss and Lagrenée, 1999) in dry ether (10 ml) was stirred for 1 h. A red precipitate resulted. The precipitate was isolated and washed with acetone (3 × 5 ml). The product was recrystallized from CH<sub>2</sub>Cl<sub>2</sub>. A yellow solid was produced and dried *in vacuo*.

The title compound was crystallized unintentionally from the reaction mixture of the complex (2,5-Bis(2-pyridyl)-1,3,4-oxadiazole)dimethylplatinum(II), [PtMe<sub>2</sub>(ox)] (0.05 g, 0.112 mmol) and, the commercially available *N*-(3,5-di-*tert*-butylphenyl)-3-bromopropanamide (0.052 g, 0.129 mmol) in acetone (15 ml) was stirred for 5 h at room temperature. The reaction color changed to yellow suspension. The solvent was evaporated under vacuum and the resulting solid was washed with water (2 × 10 ml) and pentane (3 × 10 ml). The isolated yellow solid is highly soluble in CH<sub>2</sub>Cl<sub>2</sub> solvent, which was dried under high vacuum. Yield 87%. A suitable crystal for X-ray diffraction analysis was selected for data collection.

#### S3. Refinement

The hydrogen atoms were introduced at idealized positions and were allowed to ride on the parent atom, with C—H = 0.95–0.99 Å and N—H = 0.88 Å and  $U_{\text{iso}}(\text{H}) = 1.2\text{--}1.5U_{\text{eq}}(\text{C}, \text{N})$ .

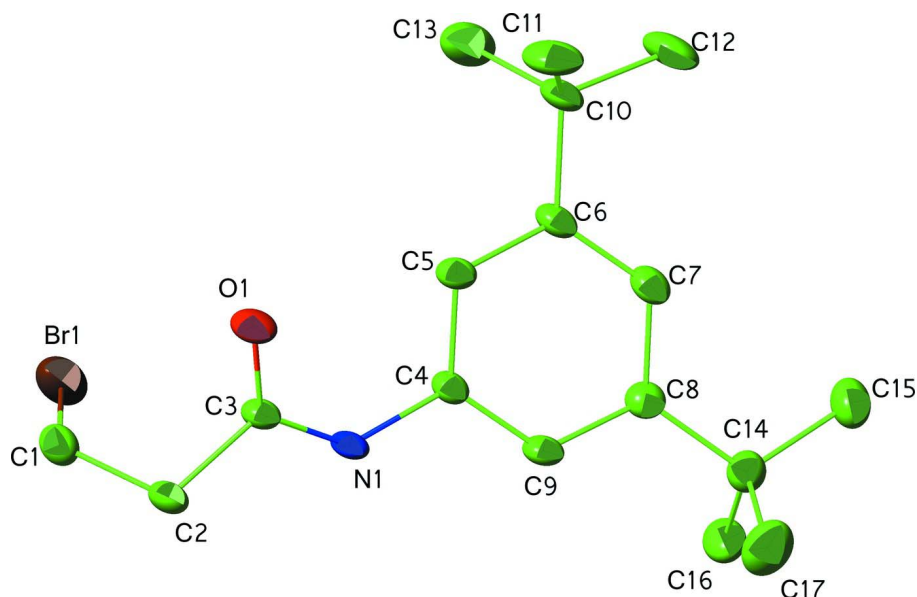


Figure 1

The molecular structure of the title compound, with atom labels and anisotropic displacement ellipsoids (drawn at 50% probability level).

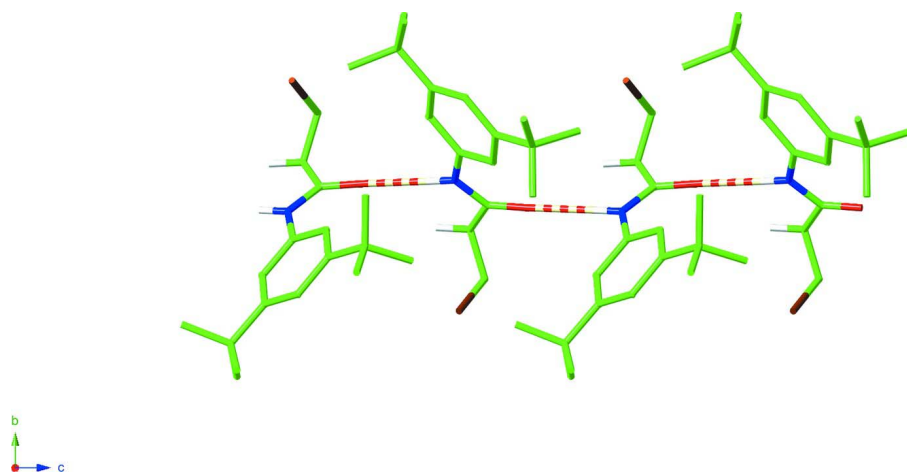


Figure 2

Partial molecular packing, showing the chains, parallel to *c* axis, formed via N—H...O hydrogen bonding (multi-rendered cylinders).

### 3-Bromo-*N*-(3,5-di-*tert*-butylphenyl)propanamide

#### Crystal data

$C_{17}H_{26}BrNO$

$M_r = 340.30$

Monoclinic,  $P2_1/c$

$a = 15.666(2) \text{ \AA}$

$b = 11.4885(16) \text{ \AA}$

$c = 9.7829(14) \text{ \AA}$

$\beta = 97.436(4)^\circ$

$V = 1745.9(4) \text{ \AA}^3$

$Z = 4$

$F(000) = 712$

$D_x = 1.295 \text{ Mg m}^{-3}$

Mo  $K\alpha$  radiation,  $\lambda = 0.71073 \text{ \AA}$

Cell parameters from 5619 reflections

$\theta = 2.2\text{--}26.0^\circ$

$\mu = 2.35 \text{ mm}^{-1}$   
 $T = 150 \text{ K}$

Needle, colourless  
 $0.40 \times 0.20 \times 0.11 \text{ mm}$

*Data collection*

Bruker APEXII CCD  
 diffractometer  
 $\varphi$  and  $\omega$  scans  
 Absorption correction: multi-scan  
 (SADABS; Bruker, 2013)  
 $T_{\min} = 0.455$ ,  $T_{\max} = 0.789$   
 21557 measured reflections

4005 independent reflections  
 2738 reflections with  $I > 2\sigma(I)$   
 $R_{\text{int}} = 0.055$   
 $\theta_{\max} = 27.6^\circ$ ,  $\theta_{\min} = 2.2^\circ$   
 $h = -20 \rightarrow 19$   
 $k = -14 \rightarrow 14$   
 $l = -8 \rightarrow 12$

*Refinement*

Refinement on  $F^2$   
 Least-squares matrix: full  
 $R[F^2 > 2\sigma(F^2)] = 0.050$   
 $wR(F^2) = 0.145$   
 $S = 1.04$   
 4005 reflections  
 187 parameters  
 0 restraints

Hydrogen site location: inferred from  
 neighbouring sites  
 H-atom parameters constrained  
 $w = 1/[\sigma^2(F_o^2) + (0.0743P)^2 + 1.5001P]$   
 where  $P = (F_o^2 + 2F_c^2)/3$   
 $(\Delta/\sigma)_{\max} < 0.001$   
 $\Delta\rho_{\max} = 1.08 \text{ e } \text{\AA}^{-3}$   
 $\Delta\rho_{\min} = -0.65 \text{ e } \text{\AA}^{-3}$

*Special details*

**Geometry.** All esds (except the esd in the dihedral angle between two l.s. planes) are estimated using the full covariance matrix. The cell esds are taken into account individually in the estimation of esds in distances, angles and torsion angles; correlations between esds in cell parameters are only used when they are defined by crystal symmetry. An approximate (isotropic) treatment of cell esds is used for estimating esds involving l.s. planes.

*Fractional atomic coordinates and isotropic or equivalent isotropic displacement parameters ( $\text{\AA}^2$ )*

|     | <i>x</i>     | <i>y</i>    | <i>z</i>    | $U_{\text{iso}}^*/U_{\text{eq}}$ |
|-----|--------------|-------------|-------------|----------------------------------|
| Br1 | 0.58935 (3)  | 0.54272 (3) | 0.85526 (5) | 0.04516 (17)                     |
| N1  | 0.61402 (17) | 0.2102 (2)  | 0.8672 (2)  | 0.0205 (6)                       |
| H1C | 0.5990       | 0.2131      | 0.9508      | 0.025*                           |
| O1  | 0.57853 (15) | 0.2805 (2)  | 0.6495 (2)  | 0.0292 (6)                       |
| C1  | 0.4854 (2)   | 0.4604 (3)  | 0.7774 (4)  | 0.0303 (8)                       |
| H1A | 0.4344       | 0.4974      | 0.8092      | 0.036*                           |
| H1B | 0.4790       | 0.4653      | 0.6756      | 0.036*                           |
| C2  | 0.4901 (2)   | 0.3353 (3)  | 0.8208 (3)  | 0.0234 (7)                       |
| H2A | 0.4358       | 0.2957      | 0.7840      | 0.028*                           |
| H2B | 0.4961       | 0.3308      | 0.9227      | 0.028*                           |
| C3  | 0.56518 (19) | 0.2730 (3)  | 0.7699 (3)  | 0.0201 (6)                       |
| C4  | 0.68642 (19) | 0.1401 (3)  | 0.8510 (3)  | 0.0201 (6)                       |
| C5  | 0.74057 (19) | 0.1639 (3)  | 0.7525 (3)  | 0.0219 (7)                       |
| H5  | 0.7282       | 0.2270      | 0.6904      | 0.026*                           |
| C6  | 0.81286 (19) | 0.0950 (3)  | 0.7452 (3)  | 0.0226 (7)                       |
| C7  | 0.8718 (2)   | 0.1217 (3)  | 0.6355 (3)  | 0.0267 (7)                       |
| C8  | 0.8922 (3)   | 0.2519 (4)  | 0.6334 (5)  | 0.0476 (11)                      |
| H8A | 0.9299       | 0.2674      | 0.5631      | 0.071*                           |
| H8B | 0.9211       | 0.2757      | 0.7240      | 0.071*                           |
| H8C | 0.8386       | 0.2959      | 0.6118      | 0.071*                           |

|      |            |             |            |             |
|------|------------|-------------|------------|-------------|
| C9   | 0.8285 (2) | 0.0018 (3)  | 0.8365 (3) | 0.0240 (7)  |
| H9   | 0.8774     | -0.0460     | 0.8308     | 0.029*      |
| C10  | 0.7749 (2) | -0.0236 (3) | 0.9359 (3) | 0.0222 (7)  |
| C11  | 0.7922 (2) | -0.1243 (3) | 1.0380 (3) | 0.0263 (7)  |
| C12  | 0.7155 (3) | -0.2089 (4) | 1.0182 (5) | 0.0467 (10) |
| H12A | 0.6632     | -0.1682     | 1.0367     | 0.070*      |
| H12B | 0.7267     | -0.2745     | 1.0820     | 0.070*      |
| H12C | 0.7077     | -0.2378     | 0.9232     | 0.070*      |
| C13  | 0.8033 (3) | -0.0751 (3) | 1.1850 (4) | 0.0364 (9)  |
| H13A | 0.8532     | -0.0231     | 1.1975     | 0.055*      |
| H13B | 0.8122     | -0.1393     | 1.2514     | 0.055*      |
| H13C | 0.7515     | -0.0316     | 1.2001     | 0.055*      |
| C14  | 0.8740 (2) | -0.1920 (3) | 1.0187 (4) | 0.0355 (9)  |
| H14A | 0.8691     | -0.2226     | 0.9245     | 0.053*      |
| H14B | 0.8813     | -0.2567     | 1.0844     | 0.053*      |
| H14C | 0.9238     | -0.1400     | 1.0349     | 0.053*      |
| C15  | 0.7037 (2) | 0.0485 (3)  | 0.9422 (3) | 0.0218 (6)  |
| H15  | 0.6666     | 0.0344      | 1.0100     | 0.026*      |
| C16  | 0.8254 (2) | 0.0852 (4)  | 0.4948 (4) | 0.0385 (9)  |
| H16A | 0.7720     | 0.1299      | 0.4744     | 0.058*      |
| H16B | 0.8119     | 0.0020      | 0.4961     | 0.058*      |
| H16C | 0.8626     | 0.1004      | 0.4236     | 0.058*      |
| C17  | 0.9571 (2) | 0.0552 (4)  | 0.6613 (4) | 0.0412 (10) |
| H17A | 0.9459     | -0.0285     | 0.6509     | 0.062*      |
| H17B | 0.9849     | 0.0712      | 0.7549     | 0.062*      |
| H17C | 0.9949     | 0.0802      | 0.5945     | 0.062*      |

Atomic displacement parameters ( $\text{\AA}^2$ )

|     | $U^{11}$    | $U^{22}$    | $U^{33}$    | $U^{12}$      | $U^{13}$    | $U^{23}$      |
|-----|-------------|-------------|-------------|---------------|-------------|---------------|
| Br1 | 0.0416 (3)  | 0.0352 (2)  | 0.0631 (3)  | -0.00389 (17) | 0.0234 (2)  | -0.00846 (19) |
| N1  | 0.0228 (13) | 0.0298 (15) | 0.0107 (12) | 0.0051 (11)   | 0.0087 (10) | -0.0011 (10)  |
| O1  | 0.0302 (13) | 0.0479 (15) | 0.0109 (10) | 0.0089 (11)   | 0.0083 (9)  | 0.0029 (10)   |
| C1  | 0.0244 (17) | 0.038 (2)   | 0.0295 (18) | 0.0105 (15)   | 0.0071 (14) | 0.0062 (15)   |
| C2  | 0.0170 (15) | 0.0324 (18) | 0.0221 (16) | 0.0020 (13)   | 0.0082 (12) | -0.0002 (13)  |
| C3  | 0.0179 (15) | 0.0277 (17) | 0.0157 (15) | -0.0025 (12)  | 0.0057 (12) | -0.0035 (12)  |
| C4  | 0.0169 (15) | 0.0278 (17) | 0.0164 (14) | -0.0003 (12)  | 0.0055 (12) | -0.0042 (13)  |
| C5  | 0.0202 (16) | 0.0322 (17) | 0.0142 (14) | 0.0000 (13)   | 0.0059 (12) | 0.0012 (13)   |
| C6  | 0.0182 (15) | 0.0329 (18) | 0.0175 (15) | -0.0009 (13)  | 0.0053 (12) | -0.0063 (13)  |
| C7  | 0.0209 (16) | 0.039 (2)   | 0.0216 (16) | 0.0031 (14)   | 0.0092 (13) | -0.0050 (14)  |
| C8  | 0.044 (3)   | 0.047 (3)   | 0.059 (3)   | -0.0080 (19)  | 0.034 (2)   | -0.004 (2)    |
| C9  | 0.0204 (16) | 0.0315 (16) | 0.0205 (16) | 0.0034 (13)   | 0.0040 (13) | -0.0070 (14)  |
| C10 | 0.0228 (16) | 0.0280 (18) | 0.0158 (15) | -0.0019 (13)  | 0.0027 (12) | -0.0049 (13)  |
| C11 | 0.0258 (17) | 0.0294 (18) | 0.0236 (16) | 0.0040 (14)   | 0.0021 (13) | 0.0014 (14)   |
| C12 | 0.044 (2)   | 0.037 (2)   | 0.058 (3)   | -0.0040 (18)  | 0.001 (2)   | 0.012 (2)     |
| C13 | 0.045 (2)   | 0.044 (2)   | 0.0216 (17) | 0.0137 (17)   | 0.0070 (16) | 0.0071 (16)   |
| C14 | 0.042 (2)   | 0.036 (2)   | 0.0290 (19) | 0.0125 (17)   | 0.0032 (16) | 0.0002 (16)   |
| C15 | 0.0222 (16) | 0.0289 (17) | 0.0158 (14) | -0.0024 (13)  | 0.0084 (12) | -0.0026 (13)  |

|     |           |           |             |              |             |              |
|-----|-----------|-----------|-------------|--------------|-------------|--------------|
| C16 | 0.036 (2) | 0.061 (3) | 0.0204 (17) | -0.0049 (18) | 0.0109 (15) | -0.0013 (17) |
| C17 | 0.028 (2) | 0.064 (3) | 0.035 (2)   | 0.0075 (18)  | 0.0159 (16) | -0.0010 (19) |

*Geometric parameters (Å, °)*

|            |           |               |           |
|------------|-----------|---------------|-----------|
| Br1—C1     | 1.951 (4) | C9—C10        | 1.396 (5) |
| N1—C3      | 1.350 (4) | C9—H9         | 0.9500    |
| N1—C4      | 1.416 (4) | C10—C15       | 1.397 (4) |
| N1—H1C     | 0.8800    | C10—C11       | 1.529 (5) |
| O1—C3      | 1.226 (4) | C11—C14       | 1.531 (5) |
| C1—C2      | 1.498 (5) | C11—C13       | 1.534 (5) |
| C1—H1A     | 0.9900    | C11—C12       | 1.538 (5) |
| C1—H1B     | 0.9900    | C12—H12A      | 0.9800    |
| C2—C3      | 1.515 (4) | C12—H12B      | 0.9800    |
| C2—H2A     | 0.9900    | C12—H12C      | 0.9800    |
| C2—H2B     | 0.9900    | C13—H13A      | 0.9800    |
| C4—C15     | 1.384 (4) | C13—H13B      | 0.9800    |
| C4—C5      | 1.391 (4) | C13—H13C      | 0.9800    |
| C5—C6      | 1.391 (4) | C14—H14A      | 0.9800    |
| C5—H5      | 0.9500    | C14—H14B      | 0.9800    |
| C6—C9      | 1.396 (5) | C14—H14C      | 0.9800    |
| C6—C7      | 1.534 (4) | C15—H15       | 0.9500    |
| C7—C8      | 1.530 (6) | C16—H16A      | 0.9800    |
| C7—C16     | 1.530 (5) | C16—H16B      | 0.9800    |
| C7—C17     | 1.531 (5) | C16—H16C      | 0.9800    |
| C8—H8A     | 0.9800    | C17—H17A      | 0.9800    |
| C8—H8B     | 0.9800    | C17—H17B      | 0.9800    |
| C8—H8C     | 0.9800    | C17—H17C      | 0.9800    |
|            |           |               |           |
| C3—N1—C4   | 127.9 (2) | C9—C10—C15    | 117.6 (3) |
| C3—N1—H1C  | 116.1     | C9—C10—C11    | 122.7 (3) |
| C4—N1—H1C  | 116.1     | C15—C10—C11   | 119.7 (3) |
| C2—C1—Br1  | 110.3 (2) | C10—C11—C14   | 112.6 (3) |
| C2—C1—H1A  | 109.6     | C10—C11—C13   | 108.8 (3) |
| Br1—C1—H1A | 109.6     | C14—C11—C13   | 107.9 (3) |
| C2—C1—H1B  | 109.6     | C10—C11—C12   | 109.0 (3) |
| Br1—C1—H1B | 109.6     | C14—C11—C12   | 108.4 (3) |
| H1A—C1—H1B | 108.1     | C13—C11—C12   | 110.0 (3) |
| C1—C2—C3   | 111.8 (3) | C11—C12—H12A  | 109.5     |
| C1—C2—H2A  | 109.2     | C11—C12—H12B  | 109.5     |
| C3—C2—H2A  | 109.2     | H12A—C12—H12B | 109.5     |
| C1—C2—H2B  | 109.2     | C11—C12—H12C  | 109.5     |
| C3—C2—H2B  | 109.2     | H12A—C12—H12C | 109.5     |
| H2A—C2—H2B | 107.9     | H12B—C12—H12C | 109.5     |
| O1—C3—N1   | 124.3 (3) | C11—C13—H13A  | 109.5     |
| O1—C3—C2   | 121.2 (3) | C11—C13—H13B  | 109.5     |
| N1—C3—C2   | 114.5 (3) | H13A—C13—H13B | 109.5     |
| C15—C4—C5  | 120.7 (3) | C11—C13—H13C  | 109.5     |

|              |            |                 |            |
|--------------|------------|-----------------|------------|
| C15—C4—N1    | 116.9 (3)  | H13A—C13—H13C   | 109.5      |
| C5—C4—N1     | 122.3 (3)  | H13B—C13—H13C   | 109.5      |
| C4—C5—C6     | 119.9 (3)  | C11—C14—H14A    | 109.5      |
| C4—C5—H5     | 120.1      | C11—C14—H14B    | 109.5      |
| C6—C5—H5     | 120.1      | H14A—C14—H14B   | 109.5      |
| C5—C6—C9     | 118.7 (3)  | C11—C14—H14C    | 109.5      |
| C5—C6—C7     | 119.4 (3)  | H14A—C14—H14C   | 109.5      |
| C9—C6—C7     | 121.9 (3)  | H14B—C14—H14C   | 109.5      |
| C8—C7—C16    | 109.3 (3)  | C4—C15—C10      | 120.9 (3)  |
| C8—C7—C17    | 108.2 (3)  | C4—C15—H15      | 119.6      |
| C16—C7—C17   | 108.3 (3)  | C10—C15—H15     | 119.6      |
| C8—C7—C6     | 110.5 (3)  | C7—C16—H16A     | 109.5      |
| C16—C7—C6    | 108.4 (3)  | C7—C16—H16B     | 109.5      |
| C17—C7—C6    | 112.1 (3)  | H16A—C16—H16B   | 109.5      |
| C7—C8—H8A    | 109.5      | C7—C16—H16C     | 109.5      |
| C7—C8—H8B    | 109.5      | H16A—C16—H16C   | 109.5      |
| H8A—C8—H8B   | 109.5      | H16B—C16—H16C   | 109.5      |
| C7—C8—H8C    | 109.5      | C7—C17—H17A     | 109.5      |
| H8A—C8—H8C   | 109.5      | C7—C17—H17B     | 109.5      |
| H8B—C8—H8C   | 109.5      | H17A—C17—H17B   | 109.5      |
| C6—C9—C10    | 122.3 (3)  | C7—C17—H17C     | 109.5      |
| C6—C9—H9     | 118.9      | H17A—C17—H17C   | 109.5      |
| C10—C9—H9    | 118.9      | H17B—C17—H17C   | 109.5      |
| Br1—C1—C2—C3 | -61.5 (3)  | C9—C6—C7—C17    | -13.4 (4)  |
| C4—N1—C3—O1  | -1.8 (5)   | C5—C6—C9—C10    | -0.9 (5)   |
| C4—N1—C3—C2  | 178.0 (3)  | C7—C6—C9—C10    | -179.6 (3) |
| C1—C2—C3—O1  | -48.6 (4)  | C6—C9—C10—C15   | -0.2 (5)   |
| C1—C2—C3—N1  | 131.6 (3)  | C6—C9—C10—C11   | -179.0 (3) |
| C3—N1—C4—C15 | -153.2 (3) | C9—C10—C11—C14  | 0.3 (4)    |
| C3—N1—C4—C5  | 29.4 (5)   | C15—C10—C11—C14 | -178.5 (3) |
| C15—C4—C5—C6 | 0.0 (5)    | C9—C10—C11—C13  | 119.9 (3)  |
| N1—C4—C5—C6  | 177.3 (3)  | C15—C10—C11—C13 | -58.9 (4)  |
| C4—C5—C6—C9  | 1.0 (5)    | C9—C10—C11—C12  | -120.1 (4) |
| C4—C5—C6—C7  | 179.7 (3)  | C15—C10—C11—C12 | 61.1 (4)   |
| C5—C6—C7—C8  | 47.2 (4)   | C5—C4—C15—C10   | -1.2 (5)   |
| C9—C6—C7—C8  | -134.1 (3) | N1—C4—C15—C10   | -178.6 (3) |
| C5—C6—C7—C16 | -72.6 (4)  | C9—C10—C15—C4   | 1.3 (5)    |
| C9—C6—C7—C16 | 106.1 (4)  | C11—C10—C15—C4  | -179.9 (3) |
| C5—C6—C7—C17 | 167.9 (3)  |                 |            |

## Hydrogen-bond geometry (Å, °)

| <i>D</i> —H $\cdots$ <i>A</i>   | <i>D</i> —H | H $\cdots$ <i>A</i> | <i>D</i> $\cdots$ <i>A</i> | <i>D</i> —H $\cdots$ <i>A</i> |
|---------------------------------|-------------|---------------------|----------------------------|-------------------------------|
| N1—H1C $\cdots$ O1 <sup>i</sup> | 0.88        | 2.01                | 2.889 (3)                  | 174                           |
| C5—H5 $\cdots$ O1               | 0.95        | 2.41                | 2.931 (4)                  | 115                           |

Symmetry code: (i) *x*, -*y*+1/2, *z*+1/2.