

Acta Crystallographica Section E

Structure Reports

Online

ISSN 1600-5368

catena-Poly[heptylenediammonium [[tetrachloridobismuthate(III)]- μ -chlorido]]

 Ali Ouasri,^{a,b*} Ali Rhandour,^b Mohamed Saadi^c and Lahcen El Ammari^c

^aDépartement de Physique-Chimie, Laboratoire de Chimie, Centre Régional des Métiers de l'Éducation et de la Formation, Souissi Rabat, Morocco, ^bEquipe de Physico-Chimie des Matériaux Inorganiques, Université Ibn Tofail, Faculté des Sciences, BP 133, 14000 Kénitra, Morocco, and ^cLaboratoire de Chimie du Solide Appliquée, Faculté des Sciences, Université Mohammed V-Agdal, Avenue Ibn Battouta, BP 1014, Rabat, Morocco
Correspondence e-mail: a_ouasri@yahoo.fr

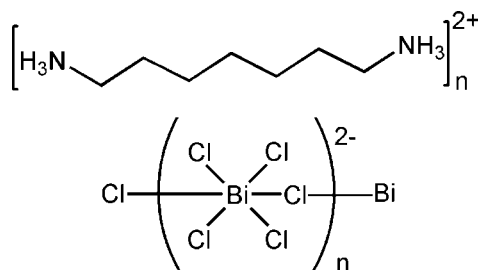
Received 19 June 2013; accepted 1 July 2013

Key indicators: single-crystal X-ray study; $T = 296$ K; mean $\sigma(\text{C}-\text{C}) = 0.005$ Å; R factor = 0.021; wR factor = 0.051; data-to-parameter ratio = 25.8.

The title organic-inorganic hybrid compound, $\{(\text{C}_7\text{H}_{20}\text{N}_2)[\text{BiCl}_5]\}_n$, consists of distorted corner-joined $[\text{BiCl}_6]$ octahedra forming zigzag polymeric anionic chains parallel to $[001]$, separated by columns of heptylenediammonium cations. The asymmetric unit contains two crystallographically independent bismuth metal atoms, one of which lies on an inversion centre and the other on a twofold axis. In the crystal, the polymeric chains and cations are linked by $\text{N}-\text{H}\cdots\text{Cl}$ hydrogen bonds, forming undulating layers parallel to (110) .

Related literature

For potential applications of alkylammonium halogenido-antimonates and -bismuthates, see: Ciapala *et al.* (1997); Bednarska-Bolek *et al.* (2000); Bator *et al.* (1998). For the structures of related compounds see: Ouasri *et al.* (2001, 2012); Jeghnou *et al.* (2005); Rhandour *et al.* (2011).



Experimental

Crystal data

 $(\text{C}_7\text{H}_{20}\text{N}_2)[\text{BiCl}_5]$
 $M_r = 518.48$

 Orthorhombic, $Pbcn$
 $a = 12.2451$ (5) Å
 $b = 16.5509$ (6) Å
 $c = 15.8934$ (6) Å
 $V = 3221.1$ (2) Å³
 $Z = 8$

 Mo $K\alpha$ radiation
 $\mu = 11.75$ mm⁻¹
 $T = 296$ K
 $0.36 \times 0.31 \times 0.27$ mm

Data collection

 Bruker X8 APEX Diffractometer
 Absorption correction: multi-scan
 (SADABS; Bruker, 2009)
 $T_{\min} = 0.512$, $T_{\max} = 0.640$

 26890 measured reflections
 3559 independent reflections
 2700 reflections with $I > 2\sigma(I)$
 $R_{\text{int}} = 0.034$

Refinement

 $R[F^2 > 2\sigma(F^2)] = 0.021$
 $wR(F^2) = 0.051$
 $S = 1.05$
 3559 reflections

 138 parameters
 H-atom parameters constrained
 $\Delta\rho_{\text{max}} = 0.70$ e Å⁻³
 $\Delta\rho_{\text{min}} = -0.96$ e Å⁻³

Table 1

Hydrogen-bond geometry (Å, °).

$D-\text{H}\cdots A$	$D-\text{H}$	$\text{H}\cdots A$	$D\cdots A$	$D-\text{H}\cdots A$
$\text{N1}-\text{H13}\cdots\text{Cl2}^{\text{i}}$	0.89	2.45	3.257 (4)	151
$\text{N2}-\text{H22}\cdots\text{Cl4}^{\text{ii}}$	0.89	2.37	3.222 (3)	159

 Symmetry codes: (i) $-x + 1, -y + 1, -z$; (ii) $x - \frac{1}{2}, -y + \frac{3}{2}, -z$.

Data collection: APEX2 (Bruker, 2009); cell refinement: SAINT (Bruker, 2009); data reduction: SAINT; program(s) used to solve structure: SHELXS97 (Sheldrick, 2008); program(s) used to refine structure: SHELXL97 (Sheldrick, 2008); molecular graphics: ORTEP-3 for Windows (Farrugia, 2012); software used to prepare material for publication: PLATON (Spek, 2009) and publCIF (Westrip, 2010).

The authors thank the Unit of Support for Technical and Scientific Research (UATRS, CNRST) for the X-ray measurements.

Supplementary data and figures for this paper are available from the IUCr electronic archives (Reference: RZ5076).

References

- Bator, G., Baran, J., Jakubas, R. & Sobczyk, L. (1998). *J. Mol. Struct.* **450**, 89–100.
 Bednarska-Bolek, B., Zaleski, J., Bator, G. & Jakubas, R. (2000). *J. Phys. Chem. Solids* **61**, 1249–1261.
 Bruker (2009). APEX2, SAINT and SADABS. Bruker AXS Inc., Madison, Wisconsin, USA.
 Ciapala, P., Jakubas, R., Bator, G., Zaleski, J., Pietraszko, A., Drozd, M. & Baran, J. (1997). *J. Phys. Condens. Matter* **9**, 627–645.
 Farrugia, L. J. (2012). *J. Appl. Cryst.* **45**, 849–854.
 Jeghnou, H., Ouasri, A., Rhandour, A., Dhamelincoirt, M. C., Dhamelincoirt, P., Mazzah, A. & Roussel, P. (2005). *J. Raman Spectrosc.* **36**, 1023–1028.
 Ouasri, A., Elyoubi, M. S. D., Guedira, T., Rhandour, A., Mhiri, T. & Daoud, A. (2001). *Spectrochim. Acta Part A* **57**, 2593–2598.
 Ouasri, A., Jeghnou, H., Rhandour, A., Mazzah, A. & Rousseau, P. (2012). *J. Mol. Struct.* **1028**, 79–87.
 Rhandour, A., Ouasri, A., Mazzah, A. & Rousseau, P. (2011). *J. Mol. Struct.* **990**, 95–101.
 Sheldrick, G. M. (2008). *Acta Cryst.* **A64**, 112–122.
 Spek, A. L. (2009). *Acta Cryst.* **D65**, 148–155.
 Westrip, S. P. (2010). *J. Appl. Cryst.* **43**, 920–925.

supporting information

Acta Cryst. (2013). E69, m437 [doi:10.1107/S1600536813018102]

catena-Poly[heptylendiammonium [[tetrachloridobismuthate(III)]- μ -chlorido]]

Ali Ouasri, Ali Rhandour, Mohamed Saadi and Lahcen El Ammari

S1. Comment

Alkylammonium halogenoantimonates and bismuthates of general formula R_2MX_5 , $R_3M_2X_9$ and $R_5M_2X_{11}$ (R : organic cations, M : Sb or Bi, X : Cl, Br or I) have recently attracted considerable attention since some of these compounds have revealed interesting properties (ferroelectric and non-linear optical) which make them promising materials from the viewpoint of applications (Ciapala *et al.*, 1997; Bednarska-Bolek *et al.*, 2000; Bator *et al.*, 1998). The crystal lattices of the halogenometallates compounds are built of distorted MX_6^{3-} octahedra which are either isolated or linked to each other by corners, edges and faces. The anionic sublattices of the halogenoantimonates and bismuthates compounds of formula $R_3M_2X_9$ (Ouasri *et al.*, 2001; Jeghnou *et al.*, 2005; Ouasri *et al.*, 2012; Rhandour *et al.*, 2011) are built of distorted MX_6^{3-} octahedra connected with each other, by corners, edges and faces, in such a way that three halogen atoms of the coordination sphere of Sb or Bi atoms are bridging and three are terminal. The aim of the present work was to study the recently synthesized title compound by X-ray diffraction to obtain informations about its crystal structure at ambient temperature.

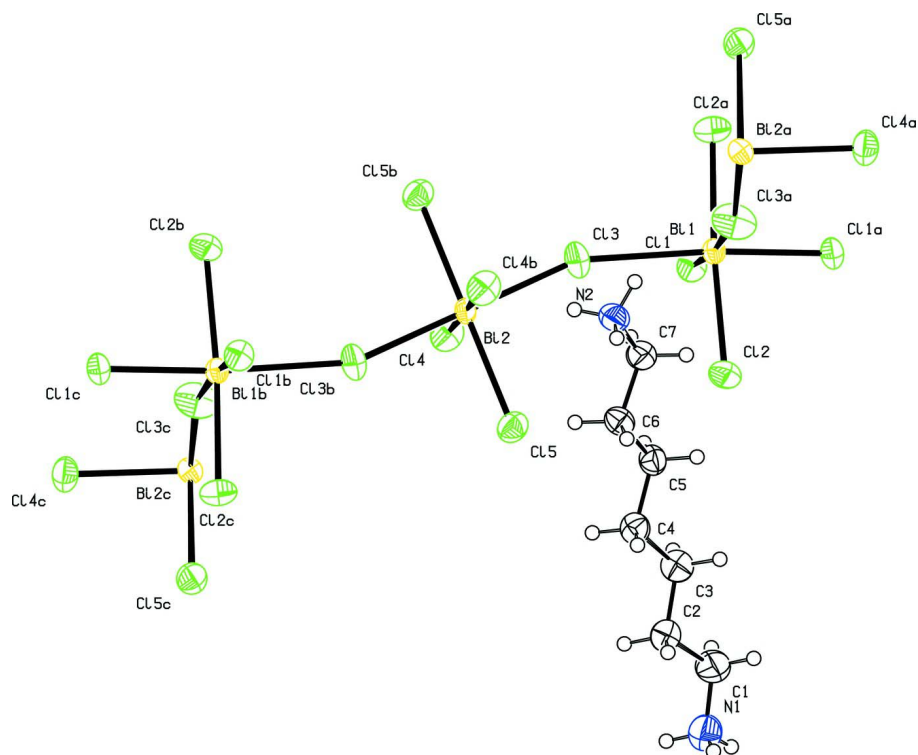
The structure of the organic-inorganic hybrid title compound is built up from inorganic polymeric anions and organic cations (Fig. 1). In this structure, each bismuth cation is surrounded by six chlorine anions building a distorted $BiCl_6^{3-}$ octahedron, with Bi—Cl distances varying from 2.5520 (8) to 2.9732 (10) Å. The octahedra are corner-joined to form one-dimensional zig-zag chains propagating along the c axis. The periodic length of this string is three octahedra. In the crystal structure, the chains and organic cations are linked together by N—H \cdots Cl hydrogen bonds (Table 1) to build undulated sheets parallel to the (1 1 0) plane (Fig. 2).

S2. Experimental

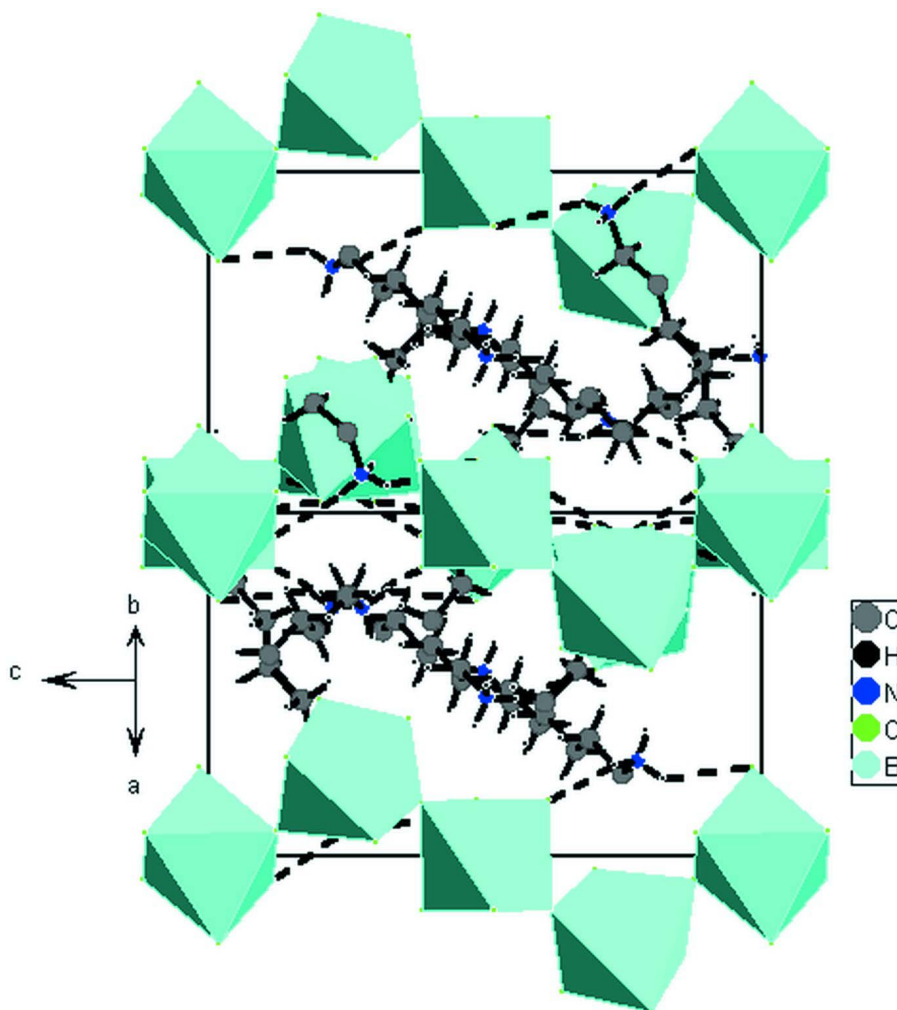
Single crystals of the title compound were obtained by slow evaporation, at room temperature, of an aqueous solution containing stoichiometric amounts of 1,7-diaminoheptane $NH_2(CH_2)_7NH_2$ (acidified with HCl in a large excess) and bismuth(III) oxide Bi_2O_3 .

S3. Refinement

All H atoms were located in a difference Fourier map and treated as riding, with C—H = 0.97 Å, N—H = 0.89 Å, and with $U_{iso}(H) = 1.2 U_{eq}(C, N)$. One outlier (1 1 1) was omitted in the last cycles of refinement.

**Figure 1**

The structure of the title compound with displacement ellipsoids drawn at the 50% probability level. H atoms are represented as small circles. Symmetry codes: (a) $1-x, y, 1/2-z$; (b) $1-x, 1-y, -z$; (c) $x, 1-y, -1/2+z$.

**Figure 2**

Partial plot of the title compound, showing undulated inorganic layers linked through N–H...Cl hydrogen bonds (dashed lines).

catena-Poly[heptylendiammonium [[tetrachloridobismuthate(III)]- μ -chlorido]]

Crystal data

$(C_7H_{20}N_2)[BiCl_5]$

$M_r = 518.48$

Orthorhombic, *Pbcn*

Hall symbol: -P 2n 2ab

$a = 12.2451 (5) \text{ \AA}$

$b = 16.5509 (6) \text{ \AA}$

$c = 15.8934 (6) \text{ \AA}$

$V = 3221.1 (2) \text{ \AA}^3$

$Z = 8$

$F(000) = 1952$

$D_x = 2.138 \text{ Mg m}^{-3}$

Mo $K\alpha$ radiation, $\lambda = 0.71073 \text{ \AA}$

Cell parameters from 3559 reflections

$\theta = 2.5\text{--}27.1^\circ$

$\mu = 11.75 \text{ mm}^{-1}$

$T = 296 \text{ K}$

Block, colourless

$0.36 \times 0.31 \times 0.27 \text{ mm}$

Data collection

Bruker X8 APEX Diffractometer

Radiation source: fine-focus sealed tube

Graphite monochromator

φ and ω scans

Absorption correction: multi-scan

(SADABS; Bruker, 2009)

$T_{\min} = 0.512$, $T_{\max} = 0.640$

26890 measured reflections

3559 independent reflections

2700 reflections with $I > 2\sigma(I)$

$R_{\text{int}} = 0.034$

$\theta_{\max} = 27.1^\circ$, $\theta_{\min} = 2.5^\circ$

$h = -15 \rightarrow 15$

$k = -19 \rightarrow 21$

$l = -20 \rightarrow 20$

Refinement

Refinement on F^2

Least-squares matrix: full

$R[F^2 > 2\sigma(F^2)] = 0.021$

$wR(F^2) = 0.051$

$S = 1.05$

3559 reflections

138 parameters

0 restraints

Primary atom site location: structure-invariant
direct methods

Secondary atom site location: difference Fourier
map

Hydrogen site location: inferred from
neighbouring sites

H-atom parameters constrained

$w = 1/[\sigma^2(F_o^2) + (0.0185P)^2 + 4.1437P]$

where $P = (F_o^2 + 2F_c^2)/3$

$(\Delta/\sigma)_{\max} < 0.001$

$\Delta\rho_{\max} = 0.70 \text{ e } \text{\AA}^{-3}$

$\Delta\rho_{\min} = -0.96 \text{ e } \text{\AA}^{-3}$

Special details

Geometry. All s.u.'s (except the s.u. in the dihedral angle between two l.s. planes) are estimated using the full covariance matrix. The cell s.u.'s are taken into account individually in the estimation of s.u.'s in distances, angles and torsion angles; correlations between s.u.'s in cell parameters are only used when they are defined by crystal symmetry. An approximate (isotropic) treatment of cell s.u.'s is used for estimating s.u.'s involving l.s. planes.

Refinement. Refinement of F^2 against all reflections. The weighted R -factor wR and goodness of fit S are based on F^2 , conventional R -factors R are based on F , with F set to zero for negative F^2 . The threshold expression of $F^2 > \sigma(F^2)$ is used only for calculating R -factors(gt) *etc.* and is not relevant to the choice of reflections for refinement. R -factors based on F^2 are statistically about twice as large as those based on F , and R -factors based on all data will be even larger.

Fractional atomic coordinates and isotropic or equivalent isotropic displacement parameters (\AA^2)

	x	y	z	$U_{\text{iso}}^*/U_{\text{eq}}$
C1	0.6871 (4)	0.7642 (3)	0.0475 (3)	0.0677 (14)
H1A	0.7050	0.7509	0.1053	0.081*
H1B	0.6323	0.7259	0.0286	0.081*
C2	0.6390 (3)	0.8465 (2)	0.0455 (2)	0.0451 (9)
H2A	0.6214	0.8611	-0.0121	0.054*
H2B	0.6916	0.8853	0.0668	0.054*
C3	0.5365 (3)	0.8490 (2)	0.0987 (3)	0.0463 (9)
H3A	0.4841	0.8114	0.0750	0.056*
H3B	0.5547	0.8298	0.1547	0.056*
C4	0.4816 (3)	0.9305 (2)	0.1073 (3)	0.0441 (9)
H4A	0.4584	0.9489	0.0522	0.053*
H4B	0.5339	0.9693	0.1290	0.053*
C5	0.3835 (3)	0.9273 (2)	0.1654 (2)	0.0415 (9)
H5A	0.3273	0.8947	0.1389	0.050*
H5B	0.4048	0.9002	0.2169	0.050*
C6	0.3346 (3)	1.0084 (2)	0.1881 (2)	0.0401 (9)
H6A	0.3904	1.0421	0.2134	0.048*
H6B	0.3094	1.0350	0.1373	0.048*
C7	0.2416 (4)	0.9995 (2)	0.2478 (2)	0.0475 (11)

H7A	0.1834	0.9698	0.2204	0.057*
H7B	0.2655	0.9683	0.2960	0.057*
N1	0.7835 (4)	0.7542 (3)	-0.0032 (2)	0.0658 (11)
H11	0.8014	0.7021	-0.0052	0.079*
H12	0.8382	0.7822	0.0192	0.079*
H13	0.7704	0.7720	-0.0551	0.079*
N2	0.1985 (3)	1.0779 (2)	0.27729 (18)	0.0453 (8)
H21	0.1546	1.0699	0.3211	0.054*
H22	0.1612	1.1015	0.2359	0.054*
H23	0.2537	1.1097	0.2926	0.054*
C11	0.55628 (8)	0.15799 (5)	0.13916 (5)	0.0390 (2)
C12	0.29126 (8)	0.25115 (6)	0.19982 (6)	0.0504 (2)
C13	0.54355 (11)	0.38672 (7)	0.12014 (7)	0.0637 (3)
C14	0.54647 (9)	0.38534 (6)	-0.11631 (6)	0.0493 (2)
C15	0.29132 (8)	0.45097 (6)	-0.01712 (6)	0.0465 (2)
Bi1	0.5000	0.261494 (10)	0.2500	0.02717 (6)
Bi2	0.5000	0.5000	0.0000	0.02820 (6)

Atomic displacement parameters (Å²)

	U^{11}	U^{22}	U^{33}	U^{12}	U^{13}	U^{23}
C1	0.073 (3)	0.062 (3)	0.068 (3)	0.024 (3)	0.022 (3)	0.008 (2)
C2	0.047 (2)	0.043 (2)	0.045 (2)	0.0008 (18)	-0.0039 (18)	-0.0019 (17)
C3	0.052 (2)	0.040 (2)	0.046 (2)	-0.0019 (19)	0.0013 (19)	-0.0077 (18)
C4	0.052 (2)	0.035 (2)	0.046 (2)	0.0019 (17)	0.0019 (18)	-0.0005 (17)
C5	0.045 (2)	0.038 (2)	0.041 (2)	-0.0006 (17)	0.0000 (17)	0.0060 (16)
C6	0.041 (2)	0.041 (2)	0.038 (2)	-0.0072 (16)	0.0024 (18)	-0.0011 (16)
C7	0.043 (2)	0.046 (3)	0.054 (3)	0.0006 (17)	0.007 (2)	0.0091 (19)
N1	0.065 (3)	0.076 (3)	0.057 (2)	0.012 (2)	-0.002 (2)	0.0057 (19)
N2	0.0392 (17)	0.061 (2)	0.0356 (15)	-0.0007 (16)	0.0033 (14)	0.0017 (15)
C11	0.0461 (5)	0.0372 (5)	0.0336 (4)	-0.0012 (4)	0.0044 (4)	-0.0097 (4)
C12	0.0391 (5)	0.0545 (6)	0.0575 (6)	0.0042 (4)	-0.0104 (5)	0.0104 (5)
C13	0.0720 (7)	0.0646 (8)	0.0546 (6)	-0.0119 (6)	-0.0077 (6)	0.0313 (6)
C14	0.0520 (6)	0.0497 (6)	0.0463 (5)	-0.0004 (5)	0.0114 (5)	-0.0126 (5)
C15	0.0408 (5)	0.0531 (6)	0.0457 (5)	-0.0049 (4)	0.0064 (4)	-0.0023 (4)
Bi1	0.03136 (10)	0.02362 (10)	0.02653 (9)	0.000	0.00112 (8)	0.000
Bi2	0.03338 (10)	0.02704 (11)	0.02418 (9)	-0.00266 (8)	0.00014 (8)	0.00424 (6)

Geometric parameters (Å, °)

C1—N1	1.439 (6)	C7—H7A	0.9700
C1—C2	1.485 (6)	C7—H7B	0.9700
C1—H1A	0.9700	N1—H11	0.8900
C1—H1B	0.9700	N1—H12	0.8900
C2—C3	1.515 (5)	N1—H13	0.8900
C2—H2A	0.9700	N2—H21	0.8900
C2—H2B	0.9700	N2—H22	0.8900
C3—C4	1.513 (6)	N2—H23	0.8900

C3—H3A	0.9700	C11—Bi1	2.5520 (8)
C3—H3B	0.9700	C12—Bi1	2.6830 (10)
C4—C5	1.517 (5)	C13—Bi2	2.7287 (10)
C4—H4A	0.9700	C13—Bi1	2.9732 (10)
C4—H4B	0.9700	C14—Bi2	2.7097 (9)
C5—C6	1.512 (5)	C15—Bi2	2.6948 (9)
C5—H5A	0.9700	Bi1—Cl1 ⁱ	2.5520 (8)
C5—H5B	0.9700	Bi1—Cl2 ⁱ	2.6830 (10)
C6—C7	1.490 (5)	Bi1—Cl3 ⁱ	2.9732 (10)
C6—H6A	0.9700	Bi2—Cl5 ⁱⁱ	2.6948 (9)
C6—H6B	0.9700	Bi2—Cl4 ⁱⁱ	2.7097 (9)
C7—N2	1.477 (5)	Bi2—Cl3 ⁱⁱ	2.7287 (10)
N1—C1—C2	114.8 (4)	C1—N1—H12	109.5
N1—C1—H1A	108.6	H11—N1—H12	109.5
C2—C1—H1A	108.6	C1—N1—H13	109.5
N1—C1—H1B	108.6	H11—N1—H13	109.5
C2—C1—H1B	108.6	H12—N1—H13	109.5
H1A—C1—H1B	107.6	C7—N2—H21	109.5
C1—C2—C3	109.9 (3)	C7—N2—H22	109.5
C1—C2—H2A	109.7	H21—N2—H22	109.5
C3—C2—H2A	109.7	C7—N2—H23	109.5
C1—C2—H2B	109.7	H21—N2—H23	109.5
C3—C2—H2B	109.7	H22—N2—H23	109.5
H2A—C2—H2B	108.2	Bi2—Cl3—Bi1	158.39 (5)
C4—C3—C2	116.2 (3)	C11—Bi1—Cl1 ⁱ	95.67 (4)
C4—C3—H3A	108.2	C11—Bi1—Cl2 ⁱ	84.55 (3)
C2—C3—H3A	108.2	Cl1 ⁱ —Bi1—Cl2 ⁱ	90.53 (3)
C4—C3—H3B	108.2	C11—Bi1—Cl2	90.53 (3)
C2—C3—H3B	108.2	Cl1 ⁱ —Bi1—Cl2	84.55 (3)
H3A—C3—H3B	107.4	Cl2 ⁱ —Bi1—Cl2	172.69 (4)
C3—C4—C5	112.0 (3)	C11—Bi1—Cl3 ⁱ	174.59 (3)
C3—C4—H4A	109.2	Cl1 ⁱ —Bi1—Cl3 ⁱ	86.58 (3)
C5—C4—H4A	109.2	Cl2 ⁱ —Bi1—Cl3 ⁱ	90.52 (3)
C3—C4—H4B	109.2	Cl2—Bi1—Cl3 ⁱ	94.58 (4)
C5—C4—H4B	109.2	C11—Bi1—Cl3	86.58 (3)
H4A—C4—H4B	107.9	Cl1 ⁱ —Bi1—Cl3	174.59 (3)
C6—C5—C4	115.3 (3)	Cl2 ⁱ —Bi1—Cl3	94.58 (4)
C6—C5—H5A	108.4	Cl2—Bi1—Cl3	90.52 (3)
C4—C5—H5A	108.4	Cl3 ⁱ —Bi1—Cl3	91.61 (5)
C6—C5—H5B	108.4	Cl5 ⁱⁱ —Bi2—Cl5	180.0
C4—C5—H5B	108.4	Cl5 ⁱⁱ —Bi2—Cl4 ⁱⁱ	85.37 (3)
H5A—C5—H5B	107.5	Cl5—Bi2—Cl4 ⁱⁱ	94.63 (3)
C7—C6—C5	111.6 (3)	Cl5 ⁱⁱ —Bi2—Cl4	94.63 (3)
C7—C6—H6A	109.3	Cl5—Bi2—Cl4	85.37 (3)
C5—C6—H6A	109.3	Cl4 ⁱⁱ —Bi2—Cl4	180.00 (4)
C7—C6—H6B	109.3	Cl5 ⁱⁱ —Bi2—Cl3 ⁱⁱ	92.81 (3)
C5—C6—H6B	109.3	Cl5—Bi2—Cl3 ⁱⁱ	87.19 (3)

H6A—C6—H6B	108.0	C14 ⁱⁱ —Bi2—C13 ⁱⁱ	87.43 (3)
N2—C7—C6	112.9 (3)	C14—Bi2—C13 ⁱⁱ	92.57 (3)
N2—C7—H7A	109.0	C15 ⁱⁱ —Bi2—C13	87.19 (3)
C6—C7—H7A	109.0	C15—Bi2—C13	92.81 (3)
N2—C7—H7B	109.0	C14 ⁱⁱ —Bi2—C13	92.57 (3)
C6—C7—H7B	109.0	C14—Bi2—C13	87.43 (3)
H7A—C7—H7B	107.8	C13 ⁱⁱ —Bi2—C13	180.00 (4)
C1—N1—H11	109.5		

Symmetry codes: (i) $-x+1, y, -z+1/2$; (ii) $-x+1, -y+1, -z$.

Hydrogen-bond geometry (\AA , $^\circ$)

<i>D</i> —H \cdots <i>A</i>	<i>D</i> —H	H \cdots <i>A</i>	<i>D</i> \cdots <i>A</i>	<i>D</i> —H \cdots <i>A</i>
N1—H13 \cdots C12 ⁱⁱ	0.89	2.45	3.257 (4)	151
N2—H22 \cdots C14 ⁱⁱⁱ	0.89	2.37	3.222 (3)	159

Symmetry codes: (ii) $-x+1, -y+1, -z$; (iii) $x-1/2, -y+3/2, -z$.