

## Quinoline-2-sulfonamide

Krzysztof Marciniak,<sup>a\*</sup> Andrzej Maślankiewicz,<sup>a</sup> Joachim Kusz<sup>b</sup> and Maria Nowak<sup>b</sup>

<sup>a</sup>Department of Organic Chemistry, The Medical University of Silesia, Jagiellońska 4, 41-200 Sosnowiec, Poland, and <sup>b</sup>Institute of Physics, University of Silesia, Uniwersytecka 4, 40-007 Katowice, Poland

Correspondence e-mail: kmarciniec@sum.edu.pl

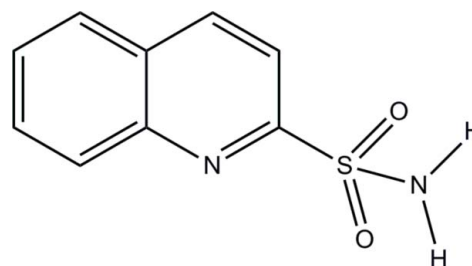
Received 28 May 2013; accepted 24 July 2013

Key indicators: single-crystal X-ray study;  $T = 100$  K; mean  $\sigma(C-C) = 0.003$  Å;  $R$  factor = 0.030;  $wR$  factor = 0.072; data-to-parameter ratio = 9.7.

In the title compound,  $C_9H_8N_2O_2S$ , the sulfamoyl  $-NH_2$  group is involved in intermolecular hydrogen bonding with the sulfonamide O and quinoline N atoms. In the crystal, molecules are linked into dimers *via* pairs of  $N-H\cdots N$  hydrogen bonds, forming an  $R_2^2(10)$  motif. The dimers are further assembled into chains parallel to the  $b$  axis through  $N-H\cdots O$  hydrogen bonds, generating a  $C(4)$  motif. The crystal packing is additionally stabilized by intermolecular  $C-H\cdots O$  interactions. The crystal studied was a non-merohedral twin with a domain ratio of 0.938 (2):0.062 (2). Density functional theory (DFT) calculations, at the B3LYP/6-31 G(d,p) level of theory, were used to optimize the molecular structure and to determine interaction energies for the title compound. The resulting interaction energy is  $\sim 4.4$  kcal mol<sup>-1</sup> per bridge for the  $C(4)$  chain and  $\sim 5.9$  kcal mol<sup>-1</sup> per bridge for the  $R_2^2(10)$  motif.

### Related literature

For the use of the quinolinesulfamoyl unit in medicinal chemistry, see: Kim *et al.* (2005); Zajdel *et al.* (2012, 2013). For related structures, see: Marciniak *et al.* (2012). For the synthesis, see: Maślankiewicz *et al.* (2007). For hydrogen-bonding motifs in sulfonamides, see: Adsmond & Grant (2001). For graph-set notation of hydrogen-bond motifs, see: Bernstein *et al.* (1995). For general hydrogen-bond rules, see: Donohue (1952); Etter (1990). For details of theoretical calculations, see: Frisch *et al.* (20094); Parr & Yang (1989). The twin matrix was determined with *ROTAX* (Cooper *et al.*, 2002).



### Experimental

#### Crystal data

|                       |                                   |
|-----------------------|-----------------------------------|
| $C_9H_8N_2O_2S$       | $V = 887.79$ (2) Å <sup>3</sup>   |
| $M_r = 208.23$        | $Z = 4$                           |
| Monoclinic, $P2_1/c$  | Mo $K\alpha$ radiation            |
| $a = 8.5907$ (1) Å    | $\mu = 0.34$ mm <sup>-1</sup>     |
| $b = 5.1716$ (1) Å    | $T = 100$ K                       |
| $c = 20.0375$ (3) Å   | $0.27 \times 0.23 \times 0.05$ mm |
| $\beta = 94.230$ (1)° |                                   |

#### Data collection

|  |  |
|--|--|
| Agilent SuperNova diffractometer with an Atlas detector                  | 27311 measured reflections             |
| Absorption correction: multi-scan ( <i>CrysAlis PRO</i> ; Agilent, 2011) | 1552 independent reflections           |
| $T_{\min} = 0.919$ , $T_{\max} = 1.000$                                  | 1530 reflections with $I > 2\sigma(I)$ |
|  | $R_{\text{int}} = 0.024$               |

#### Refinement

|                                 |   |
|---------------------------------|---|
| $R[F^2 > 2\sigma(F^2)] = 0.030$ | 160 parameters                                |
| $wR(F^2) = 0.072$               | All H-atom parameters refined                 |
| $S = 1.12$                      | $\Delta\rho_{\max} = 0.35$ e Å <sup>-3</sup>  |
| 1552 reflections                | $\Delta\rho_{\min} = -0.32$ e Å <sup>-3</sup> |

**Table 1**

Hydrogen-bond geometry (Å, °).

| $D-H\cdots A$           | $D-H$    | $H\cdots A$ | $D\cdots A$ | $D-H\cdots A$ |
|-------------------------|----------|-------------|-------------|---------------|
| $N2-H2N2\cdots O1^i$    | 0.84 (3) | 2.09 (3)    | 2.922 (2)   | 171 (2)       |
| $N2-H1N2\cdots N1^{ii}$ | 0.80 (3) | 2.18 (3)    | 2.962 (2)   | 165 (2)       |
| $C6-H6\cdots O1^{iii}$  | 0.93 (2) | 2.66 (2)    | 3.431 (2)   | 141.5 (18)    |

Symmetry codes: (i)  $x, y + 1, z$ ; (ii)  $-x, -y + 1, -z$ ; (iii)  $x, -y + \frac{1}{2}, z - \frac{1}{2}$ .

Data collection: *CrysAlis PRO* (Agilent, 2011); cell refinement: *CrysAlis PRO*; data reduction: *CrysAlis PRO*; program(s) used to solve structure: *SHELXS97* (Sheldrick, 2008); program(s) used to refine structure: *SHELXL97* (Sheldrick, 2008) and *WinGX* (Farrugia, 2012); molecular graphics: *ORTEP-3 for Windows* (Farrugia, 2012) and *Mercury* (Macrae *et al.*, 2006); software used to prepare material for publication: *publCIF* (Westrip, 2010).

This research was supported in part by the Medical University of Silesia, grant No. KNW-1-006/P/2/0, and by PL-Grid Infrastructure, grant ID: plggkrzmarci1.

Supplementary data and figures for this paper are available from the IUCr electronic archives (Reference: GK2577).

## References

- Adsmund, D. A. & Grant, D. J. W. (2001). *J. Pharm. Sci.* **90**, 2058–2077.
- Agilent (2011). *CrysAlis PRO*. Agilent Technologies Ltd, Yarnton, England.
- Bernstein, J., Davis, R. E., Shimoni, L. & Chang, N.-L. (1995). *Angew. Chem. Int. Ed. Engl.* **34**, 1555–1573.
- Cooper, R. I., Gould, R. O., Parsons, S. & Watkin, D. J. (2002). *J. Appl. Cryst.* **35**, 168–174.
- Donohue, J. (1952). *J. Phys. Chem.* **56**, 502–510.
- Etter, M. C. (1990). *Acc. Chem. Res.* **23**, 120–126.
- Farrugia, L. J. (2012). *J. Appl. Cryst.* **45**, 849–854.
- Frisch, M. J., et al. (2009). *GAUSSIAN09*. Gaussian, Inc., Wallingford, CT, USA.
- Kim, Y.-H., Shin, K.-J., Lee, T. G., Kim, E., Lee, M.-S., Ryu, S. H. & Suh, P.-G. (2005). *Biochem. Pharmacol.* **69**, 1333–1341.
- Macrae, C. F., Edgington, P. R., McCabe, P., Pidcock, E., Shields, G. P., Taylor, R., Towler, M. & van de Streek, J. (2006). *J. Appl. Cryst.* **39**, 453–457.
- Marciniec, K., Maślankiewicz, A., Nowak, M. & Kusz, J. (2012). *Acta Cryst. E* **68**, o2826.
- Maślankiewicz, A., Marciniec, K., Pawłowski, M. & Zajdel, P. (2007). *Heterocycles*, **71**, 1975–1990.
- Parr, R. G. & Yang, W. (1989). In *Density Functional Theory of Atoms and Molecules*. New York: Oxford University Press Inc.
- Sheldrick, G. M. (2008). *Acta Cryst.* **A64**, 112–122.
- Westrip, S. P. (2010). *J. Appl. Cryst.* **43**, 920–925.
- Zajdel, P., Marciniec, K., Grychowska, K., Maślankiewicz, A., Satała, G., Duszyńska, B., Siwek, A., Nowak, G., Partyka, A., Wróbel, D., Jastrzębska-Więsek, M., Bojarski, A. J., Wesołowska, A. & Pawłowski, M. (2013). *Eur. J. Med. Chem.* **60**, 42–50.
- Zajdel, P., Marciniec, K., Maślankiewicz, A., Satała, G., Duszyńska, B., Bojarski, A. J., Partyka, A., Jastrzębska-Więsek, M., Wróbel, D., Wesołowska, A. & Pawłowski, M. (2012). *Bioorg. Med. Chem.* **20**, 1545–1556.

## supporting information

*Acta Cryst.* (2013). E69, o1357–o1358 [doi:10.1107/S160053681302062X]

## Quinoline-2-sulfonamide

Krzysztof Marciniak, Andrzej Maślankiewicz, Joachim Kusz and Maria Nowak

### S1. Comment

Compounds containing quinolinesulfamoyl moiety have received considerable attention in recent years due to their diverse pharmacological properties including antidepressant (Zajdel *et al.*, 2012; Zajdel *et al.*, 2013) or anticancer activity (Kim *et al.*, 2005).

From a structural point of view, sulfonamides are interesting because of their tendency to form different hydrogen-bond patterns in the solid state. Studies have shown that primary hydrogen-bond connectivity is somewhat predictable. Two general hydrogen-bond rules based on empirical observations of hundreds of crystal structures over the years have been developed that summarize this predictability (Adson & Grant, 2001). The first of these rules states "all good donors and acceptors are used in hydrogen bonding" (Donohue, 1952). The second hydrogen-bond rule for crystal structures of small organic molecules states that, after formation of intramolecular hydrogen bonds, the best hydrogen bond donor will bond to the best hydrogen-bond acceptor present (Etter, 1990). The molecule of quinolinesulfonamide has two good hydrogen bond donors (the sulfonamido H atoms) and three the best hydrogen bond acceptors (the sulfonamido O atoms and quinoline nitrogen atom). We have previously reported the X-ray crystal structure of quinoline-8-sulfonamide (Marciniak *et al.*, 2012). The obtained results show, according to the second hydrogen-bond rule, that the sulfamoyl NH<sub>2</sub> group is involved in intramolecular N—H...N hydrogen bond resulting in the graph-set motif of  $S(6)$  (Bernstein *et al.*, 1995). After formation of intramolecular hydrogen bond, the sulfamoyl NH<sub>2</sub> group is involved in intermolecular N—H...O hydrogen bond resulting in the graph-set motif of  $R_2^2(8)$ . The key feature of the molecular structure of 2-quinoline-sulfonamide (I) (Fig.1) is the N1—C2—S1—N2 torsion angle of  $-95.88(14)^\circ$ . The geometry of the sulfonamide group does not allow for intramolecular hydrogen-bond ring formation. In the crystal structure, the molecules form dimers through N2—H1...N1 intermolecular hydrogen bonds [graph set  $R_2^2(10)$ ] which are extended into one-dimensional chains [graph set  $C(4)$ ] along the *b* axis, through the sulfonamide N2—H2...O1 hydrogen bonds (Table 1; Fig. 2). Thus the first-level graph set is  $N_1 = C(4) R_2^2(10)$ .

The second-level graph-set notation (for combinations of two hydrogen bonds: N2—H2...O1 and N2—H1...N1) was determined to be as follows  $N_2 = R_4^4(14)C_4^4(16) R_4^4(16) R_4^4(18) R_6^6(22) R_6^6(24) R_6^6(26)$ .

The crystal packing is further stabilized by weak intermolecular hydrogen bonds C3—H3...O2 and C4—H4...O2 which generate  $R_2^1(5)$  ring and C6—H6...O1 hydrogen bond which generates *D* motif.

The molecular structure of (I) in the gas phase was optimized by the density-functional theory at the B3LYP/6-31 G(d,p) level, using the computer program GAUSSIAN09 (Parr & Yang, 1989; Frisch *et al.*, 2009). Calculations were performed using the X-ray coordinates as the input structure. The calculated geometry of the sulfonamide group allows for intramolecular hydrogen-bond five-membered ring formation (H1...N1 = 2.618 Å; N2—H1...N1 = 100.3°; N1—C2—S1—N2 =  $-35.2^\circ$ ) (Fig. 3). In the crystal structure of quinoline-2-sulfonamide (I) an intermolecular hydrogen bond is more difficult to break than comparable intramolecular hydrogen bond formed between the the sulfamoyl NH<sub>2</sub> group and endocyclic nitrogen

The minimum-energy structure of sulfonamides in the gas phase might not be identical to that observed in the solid state. Intermolecular interactions, and hydrogen bonding in particular, might strongly influence the conformations adopted in the solid state, whereas intramolecular interactions and hydrogen bonding will dominate the gas-phase conformation.

The interaction energies for 2-quinolinesulfonamide (I) were investigated by adding successive units, in their crystallographic positions, once for the chain [graph set  $C(4)$ ], once for the centrosymmetric dimer [graph set  $R_2^2(10)$ ]. These energies were then compared with the energy for the same number of independent asymmetric units to determine the stabilization energy for the interaction between units. The results are presented in table 2.

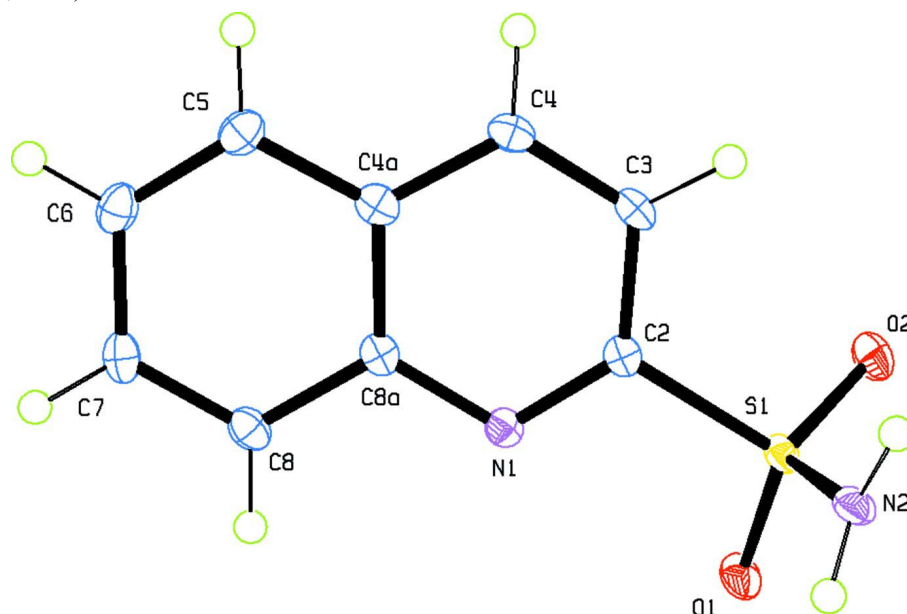
The energy difference as a function of the number of bridging interactions is nearly linear and independent of choice of generated cavity. The resulting interaction energy is  $\sim 4.4$  kcal/mol/bridge for  $C(4)$  chain and  $\sim 5.9$  kcal/mol/bridge for  $R_2^2(10)$  dimer. The small increase in stabilization energy per unit as the number of formula units suggests that there are negligible contributions from extended molecular orbitals, supporting the original assumption that the significant interactions result from hydrogen bonding contributions.

## S2. Experimental

The title compound was prepared by the reaction of hydrochloric acid solution of quinoline-2-sulfochloride with an excess ammonia at  $-10$  °C according to the procedure reported by Maślankiewicz *et al.* (2007). Single crystals of the title compound suitable for X-ray structure determination were obtained by recrystallization from an ethanolic solution.

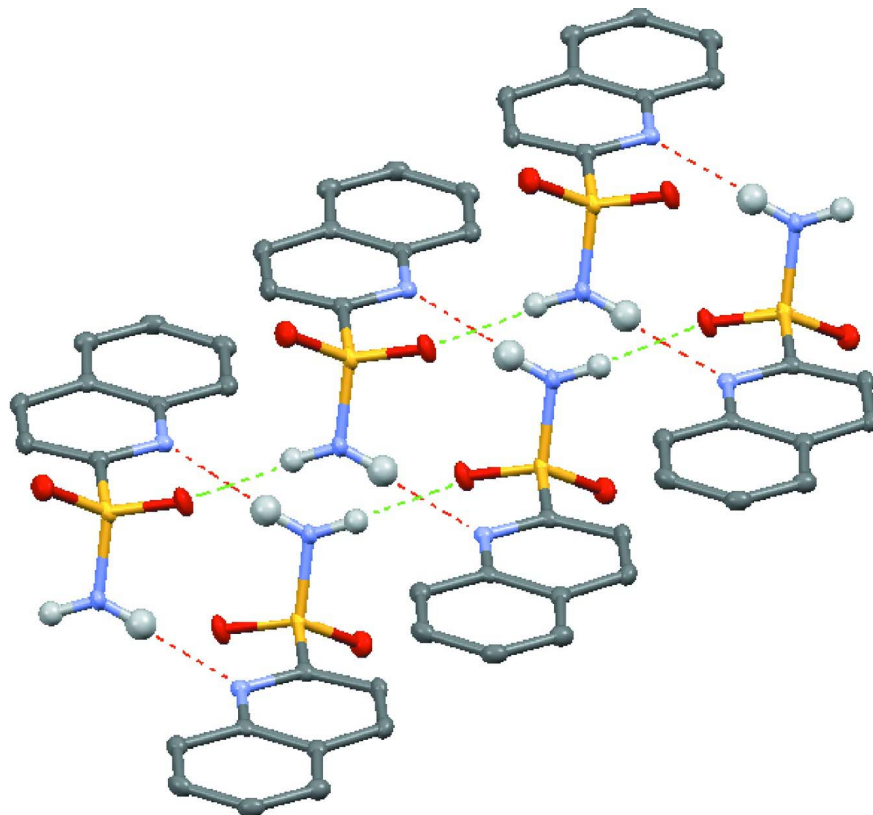
## S3. Refinement

The hydrogen atoms participating in hydrogen bonding were located in a difference Fourier map and freely refined. The twin matrix,  $1\ 0\ 0\ 0\ -1\ 0\ -0.344\ 0\ -1$ , has been determined with the ROTAX program (Cooper *et al.*, 2002). For the further refinement, the reflection data file in HKLF 5 format was prepared using "Make HKLF5" function of the *WinGX* program (Farrugia, 2012).

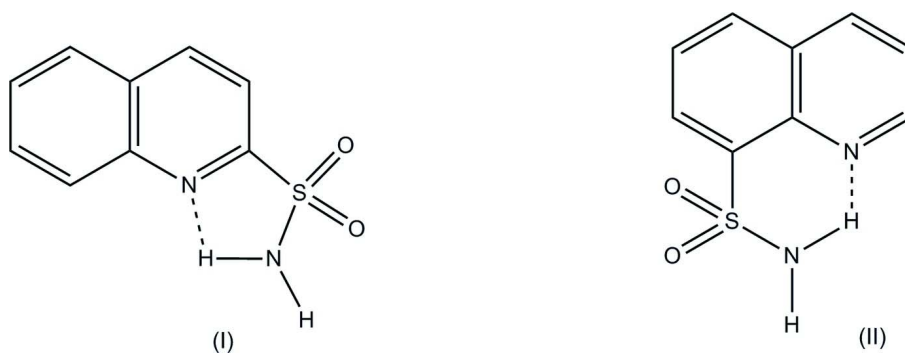


**Figure 1**

The molecular structure of the title compound with the atom labeling and displacement ellipsoids drawn at the 50% probability level.

**Figure 2**

Intermolecular N-H...N and N-H...O hydrogen bonds (dashed lines) in the title compound

**Figure 3**

Intramolecular hydrogen bond in 2-quinolinesulfonamide (I) (calculated) and 8-quinolinesulfonamide (II) (experimentally determined).

**(I)***Crystal data*C<sub>9</sub>H<sub>8</sub>N<sub>2</sub>O<sub>2</sub>S $M_r = 208.23$ Monoclinic,  $P2_1/c$ Hall symbol:  $-P\ 2_1/c$  $a = 8.5907(1)\ \text{\AA}$  $b = 5.1716(1)\ \text{\AA}$  $c = 20.0375(3)\ \text{\AA}$  $\beta = 94.230(1)^\circ$  $V = 887.79(2)\ \text{\AA}^3$  $Z = 4$

$F(000) = 432$   
 $D_x = 1.558 \text{ Mg m}^{-3}$   
 Melting point: 441.2 K  
 Mo  $K\alpha$  radiation,  $\lambda = 0.71073 \text{ \AA}$   
 Cell parameters from 14635 reflections

$\theta = 2.0\text{--}37.3^\circ$   
 $\mu = 0.34 \text{ mm}^{-1}$   
 $T = 100 \text{ K}$   
 Plate, colorless  
 $0.27 \times 0.23 \times 0.05 \text{ mm}$

*Data collection*

Agilent SuperNova  
 diffractometer with an Atlas detector  
 Radiation source: SuperNova (Mo) X-ray  
 Source  
 Mirror monochromator  
 Detector resolution:  $10.4498 \text{ pixels mm}^{-1}$   
 $\omega$  scans  
 Absorption correction: multi-scan  
 (*CrysAlis PRO*; Agilent, 2011)

$T_{\min} = 0.919$ ,  $T_{\max} = 1.000$   
 27311 measured reflections  
 1552 independent reflections  
 1530 reflections with  $I > 2\sigma(I)$   
 $R_{\text{int}} = 0.024$   
 $\theta_{\max} = 25.1^\circ$ ,  $\theta_{\min} = 2.0^\circ$   
 $h = -10 \rightarrow 10$   
 $k = -6 \rightarrow 6$   
 $l = -23 \rightarrow 23$

*Refinement*

Refinement on  $F^2$   
 Least-squares matrix: full  
 $R[F^2 > 2\sigma(F^2)] = 0.030$   
 $wR(F^2) = 0.072$   
 $S = 1.12$   
 1552 reflections  
 160 parameters  
 0 restraints  
 Primary atom site location: structure-invariant  
 direct methods

Secondary atom site location: difference Fourier  
 map  
 Hydrogen site location: inferred from  
 neighbouring sites  
 All H-atom parameters refined  
 $w = 1/[\sigma^2(F_o^2) + (0.0262P)^2 + 0.9337P]$   
 where  $P = (F_o^2 + 2F_c^2)/3$   
 $(\Delta/\sigma)_{\max} < 0.001$   
 $\Delta\rho_{\max} = 0.35 \text{ e \AA}^{-3}$   
 $\Delta\rho_{\min} = -0.32 \text{ e \AA}^{-3}$

*Special details*

**Geometry.** All e.s.d.'s (except the e.s.d. in the dihedral angle between two l.s. planes) are estimated using the full covariance matrix. The cell e.s.d.'s are taken into account individually in the estimation of e.s.d.'s in distances, angles and torsion angles; correlations between e.s.d.'s in cell parameters are only used when they are defined by crystal symmetry. An approximate (isotropic) treatment of cell e.s.d.'s is used for estimating e.s.d.'s involving l.s. planes.

**Refinement.** Refinement of  $F^2$  against ALL reflections. The weighted  $R$ -factor  $wR$  and goodness of fit  $S$  are based on  $F^2$ , conventional  $R$ -factors  $R$  are based on  $F$ , with  $F$  set to zero for negative  $F^2$ . The threshold expression of  $F^2 > \sigma(F^2)$  is used only for calculating  $R$ -factors(gt) etc. and is not relevant to the choice of reflections for refinement.  $R$ -factors based on  $F^2$  are statistically about twice as large as those based on  $F$ , and  $R$ -factors based on ALL data will be even larger.

*Fractional atomic coordinates and isotropic or equivalent isotropic displacement parameters ( $\text{\AA}^2$ )*

|     | $x$          | $y$         | $z$          | $U_{\text{iso}}^*/U_{\text{eq}}$ |
|-----|--------------|-------------|--------------|----------------------------------|
| S1  | 0.24131 (5)  | 0.61370 (8) | 0.04453 (2)  | 0.01307 (14)                     |
| O1  | 0.18557 (15) | 0.3614 (2)  | 0.06117 (6)  | 0.0193 (3)                       |
| O2  | 0.38294 (14) | 0.7120 (3)  | 0.07708 (6)  | 0.0188 (3)                       |
| N1  | 0.19733 (16) | 0.4337 (3)  | -0.07942 (7) | 0.0132 (3)                       |
| N2  | 0.10504 (19) | 0.8125 (3)  | 0.05580 (8)  | 0.0164 (3)                       |
| C2  | 0.26951 (19) | 0.6149 (3)  | -0.04339 (8) | 0.0129 (4)                       |
| C3  | 0.3627 (2)   | 0.8112 (4)  | -0.06810 (9) | 0.0153 (4)                       |
| C4  | 0.3835 (2)   | 0.8125 (4)  | -0.13486 (9) | 0.0156 (4)                       |
| C4A | 0.31105 (19) | 0.6202 (4)  | -0.17656 (9) | 0.0147 (4)                       |
| C5  | 0.3263 (2)   | 0.6090 (4)  | -0.24669 (9) | 0.0169 (4)                       |
| C6  | 0.2521 (2)   | 0.4209 (4)  | -0.28441 (9) | 0.0180 (4)                       |

|      |              |            |              |            |
|------|--------------|------------|--------------|------------|
| C7   | 0.1578 (2)   | 0.2367 (4) | -0.25488 (9) | 0.0175 (4) |
| C8   | 0.1389 (2)   | 0.2425 (4) | -0.18758 (9) | 0.0159 (4) |
| C8A  | 0.21642 (19) | 0.4342 (3) | -0.14675 (8) | 0.0129 (4) |
| H2N2 | 0.126 (3)    | 0.971 (5)  | 0.0528 (11)  | 0.027 (6)* |
| H1N2 | 0.019 (3)    | 0.751 (5)  | 0.0549 (12)  | 0.035 (7)* |
| H3   | 0.409 (2)    | 0.940 (4)  | -0.0389 (11) | 0.020 (5)* |
| H4   | 0.444 (2)    | 0.945 (4)  | -0.1538 (10) | 0.021 (5)* |
| H5   | 0.391 (2)    | 0.744 (4)  | -0.2674 (9)  | 0.012 (5)* |
| H6   | 0.265 (3)    | 0.415 (4)  | -0.3299 (12) | 0.026 (6)* |
| H7   | 0.107 (2)    | 0.103 (4)  | -0.2823 (11) | 0.023 (6)* |
| H8   | 0.073 (2)    | 0.117 (4)  | -0.1661 (11) | 0.023 (6)* |

*Atomic displacement parameters (Å<sup>2</sup>)*

|     | $U^{11}$   | $U^{22}$    | $U^{33}$   | $U^{12}$      | $U^{13}$      | $U^{23}$      |
|-----|------------|-------------|------------|---------------|---------------|---------------|
| S1  | 0.0168 (2) | 0.0096 (2)  | 0.0124 (2) | -0.00169 (17) | -0.00137 (16) | -0.00008 (16) |
| O1  | 0.0290 (7) | 0.0112 (6)  | 0.0172 (6) | -0.0037 (6)   | -0.0005 (5)   | 0.0013 (5)    |
| O2  | 0.0188 (6) | 0.0195 (7)  | 0.0172 (6) | -0.0019 (6)   | -0.0046 (5)   | -0.0012 (5)   |
| N1  | 0.0128 (7) | 0.0115 (7)  | 0.0152 (7) | 0.0013 (6)    | -0.0002 (6)   | -0.0011 (6)   |
| N2  | 0.0166 (8) | 0.0106 (8)  | 0.0223 (8) | -0.0043 (7)   | 0.0030 (6)    | -0.0020 (6)   |
| C2  | 0.0114 (8) | 0.0123 (9)  | 0.0146 (8) | 0.0028 (7)    | -0.0011 (6)   | -0.0010 (7)   |
| C3  | 0.0142 (8) | 0.0135 (9)  | 0.0176 (9) | -0.0015 (7)   | -0.0023 (7)   | -0.0015 (7)   |
| C4  | 0.0119 (8) | 0.0144 (9)  | 0.0203 (9) | -0.0007 (7)   | 0.0007 (7)    | 0.0014 (7)    |
| C4A | 0.0116 (8) | 0.0149 (9)  | 0.0176 (9) | 0.0023 (7)    | 0.0002 (7)    | 0.0005 (7)    |
| C5  | 0.0153 (8) | 0.0187 (9)  | 0.0169 (9) | 0.0017 (8)    | 0.0029 (7)    | 0.0015 (7)    |
| C6  | 0.0164 (9) | 0.0225 (10) | 0.0149 (9) | 0.0048 (8)    | 0.0006 (7)    | -0.0015 (8)   |
| C7  | 0.0167 (9) | 0.0177 (9)  | 0.0173 (9) | 0.0031 (8)    | -0.0032 (7)   | -0.0046 (7)   |
| C8  | 0.0138 (8) | 0.0146 (9)  | 0.0192 (9) | 0.0006 (7)    | -0.0005 (7)   | -0.0010 (7)   |
| C8A | 0.0112 (8) | 0.0116 (8)  | 0.0157 (9) | 0.0033 (7)    | -0.0010 (6)   | -0.0004 (7)   |

*Geometric parameters (Å, °)*

|          |             |            |             |
|----------|-------------|------------|-------------|
| S1—O2    | 1.4308 (13) | C4—H4      | 0.95 (2)    |
| S1—O1    | 1.4376 (13) | C4A—C8A    | 1.419 (2)   |
| S1—N2    | 1.5866 (16) | C4A—C5     | 1.422 (2)   |
| S1—C2    | 1.7959 (18) | C5—C6      | 1.361 (3)   |
| N1—C2    | 1.311 (2)   | C5—H5      | 1.00 (2)    |
| N1—C8A   | 1.371 (2)   | C6—C7      | 1.409 (3)   |
| N2—H2N2  | 0.84 (3)    | C6—H6      | 0.93 (2)    |
| N2—H1N2  | 0.80 (3)    | C7—C8      | 1.370 (3)   |
| C2—C3    | 1.406 (3)   | C7—H7      | 0.97 (2)    |
| C3—C4    | 1.363 (3)   | C8—C8A     | 1.419 (2)   |
| C3—H3    | 0.96 (2)    | C8—H8      | 0.98 (2)    |
| C4—C4A   | 1.414 (3)   |            |             |
| O2—S1—O1 | 120.23 (8)  | C4—C4A—C8A | 117.98 (16) |
| O2—S1—N2 | 108.44 (8)  | C4—C4A—C5  | 122.96 (17) |
| O1—S1—N2 | 107.06 (9)  | C8A—C4A—C5 | 119.05 (16) |

|               |              |               |              |
|---------------|--------------|---------------|--------------|
| O2—S1—C2      | 105.91 (8)   | C6—C5—C4A     | 120.28 (17)  |
| O1—S1—C2      | 107.59 (8)   | C6—C5—H5      | 121.3 (11)   |
| N2—S1—C2      | 106.96 (8)   | C4A—C5—H5     | 118.4 (11)   |
| C2—N1—C8A     | 117.05 (15)  | C5—C6—C7      | 120.69 (17)  |
| S1—N2—H2N2    | 117.0 (16)   | C5—C6—H6      | 118.9 (14)   |
| S1—N2—H1N2    | 115.3 (19)   | C7—C6—H6      | 120.4 (14)   |
| H2N2—N2—H1N2  | 126 (3)      | C8—C7—C6      | 120.79 (17)  |
| N1—C2—C3      | 125.52 (17)  | C8—C7—H7      | 119.6 (13)   |
| N1—C2—S1      | 116.44 (13)  | C6—C7—H7      | 119.6 (13)   |
| C3—C2—S1      | 118.02 (13)  | C7—C8—C8A     | 119.87 (17)  |
| C4—C3—C2      | 117.95 (17)  | C7—C8—H8      | 122.0 (13)   |
| C4—C3—H3      | 121.2 (13)   | C8A—C8—H8     | 118.1 (13)   |
| C2—C3—H3      | 120.9 (13)   | N1—C8A—C8     | 118.75 (16)  |
| C3—C4—C4A     | 119.54 (17)  | N1—C8A—C4A    | 121.94 (16)  |
| C3—C4—H4      | 120.5 (13)   | C8—C8A—C4A    | 119.31 (16)  |
| C4A—C4—H4     | 119.9 (13)   |               |              |
|               |              |               |              |
| C8A—N1—C2—C3  | 1.0 (3)      | C4—C4A—C5—C6  | -179.17 (17) |
| C8A—N1—C2—S1  | 179.28 (12)  | C8A—C4A—C5—C6 | -0.5 (3)     |
| O2—S1—C2—N1   | 148.59 (13)  | C4A—C5—C6—C7  | 0.7 (3)      |
| O1—S1—C2—N1   | 18.84 (15)   | C5—C6—C7—C8   | -0.1 (3)     |
| N2—S1—C2—N1   | -95.88 (14)  | C6—C7—C8—C8A  | -0.7 (3)     |
| O2—S1—C2—C3   | -32.97 (16)  | C2—N1—C8A—C8  | -179.41 (15) |
| O1—S1—C2—C3   | -162.72 (13) | C2—N1—C8A—C4A | 0.6 (2)      |
| N2—S1—C2—C3   | 82.55 (15)   | C7—C8—C8A—N1  | -179.13 (16) |
| N1—C2—C3—C4   | -1.5 (3)     | C7—C8—C8A—C4A | 0.9 (3)      |
| S1—C2—C3—C4   | -179.75 (13) | C4—C4A—C8A—N1 | -1.6 (2)     |
| C2—C3—C4—C4A  | 0.4 (3)      | C5—C4A—C8A—N1 | 179.74 (15)  |
| C3—C4—C4A—C8A | 1.0 (3)      | C4—C4A—C8A—C8 | 178.43 (16)  |
| C3—C4—C4A—C5  | 179.67 (17)  | C5—C4A—C8A—C8 | -0.3 (2)     |

Hydrogen-bond geometry ( $\text{\AA}$ ,  $^\circ$ )

| <i>D</i> —H... <i>A</i>    | <i>D</i> —H | H... <i>A</i> | <i>D</i> ... <i>A</i> | <i>D</i> —H... <i>A</i> |
|----------------------------|-------------|---------------|-----------------------|-------------------------|
| N2—H2N2...O1 <sup>i</sup>  | 0.84 (3)    | 2.09 (3)      | 2.922 (2)             | 171 (2)                 |
| N2—H1N2...N1 <sup>ii</sup> | 0.80 (3)    | 2.18 (3)      | 2.962 (2)             | 165 (2)                 |
| C3—H3...O2 <sup>iii</sup>  | 0.96 (2)    | 2.68 (2)      | 3.308 (2)             | 123.5 (16)              |
| C4—H4...O2 <sup>iii</sup>  | 0.95 (2)    | 2.72 (2)      | 3.327 (2)             | 122.3 (15)              |
| C6—H6...O1 <sup>iv</sup>   | 0.93 (2)    | 2.66 (2)      | 3.431 (2)             | 141.5 (18)              |

Symmetry codes: (i)  $x, y+1, z$ ; (ii)  $-x, -y+1, -z$ ; (iii)  $-x+1, -y+2, -z$ ; (iv)  $x, -y+1/2, z-1/2$ .Table 2. Calculation of stabilization energies for quinoline-2-sulfonamide ( $\text{kcal mol}^{-1}$ )

|                           | B3LYP/6-31G(d,p)<br>Energy | $\Delta E$ |
|---------------------------|----------------------------|------------|
| Asymmetric unit           | -631075.7                  |            |
| 2 units $N_1 = C(4)$      | -1262155.9                 | -4.4       |
| 2 units $N_1 = R_2^2(10)$ | -1262163.3                 | -11.8      |



|                               |            |       |
|-------------------------------|------------|-------|
| 3 units $N_1 = C(4)R_2^2(10)$ | -1893243.7 | -16.6 |
| 4 units $N_2 = R_4^4(14)$     | -2524335.0 | -32.2 |

---