

Acta Crystallographica Section E

Structure Reports

Online

ISSN 1600-5368

4-Bromo-2-[5-methyl-2-(morpholin-4-yl)-1,3-thiazol-4-yl]phenol

Lucian G. Bahrin,^a Cristian G. Hrib^b and Lucian M. Birsa^{a*}^aDepartment of Chemistry, "Al. I. Cuza" University Iasi, 11 Carol I Blvd, Iasi 700506, Romania, and ^bChemisches Institut der Otto-von-Guericke-Universität, Universitätsplatz 2, D-39116 Magdeburg, Germany

Correspondence e-mail: lbirsa@uaic.ro

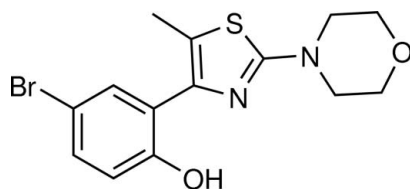
Received 6 June 2013; accepted 25 June 2013

Key indicators: single-crystal X-ray study; $T = 153$ K; mean $\sigma(\text{C}-\text{C}) = 0.003$ Å; R factor = 0.038; wR factor = 0.088; data-to-parameter ratio = 20.7.

In the title compound, $\text{C}_{14}\text{H}_{15}\text{BrN}_2\text{O}_2\text{S}$, synthesized by the reaction of the corresponding phenacyl thiocyanate with morpholine, the dihedral angle between the 1,3-thiazole ring and the phenolic substituent ring is $23.46(10)^\circ$ as a result of the steric influence of the *ortho*-methyl group on the thiazole ring. A strong intramolecular phenolic $\text{O}-\text{H}\cdots\text{N}$ hydrogen bond is present in the molecule. In the crystal, a weak $\text{C}-\text{H}\cdots\text{O}_{\text{phenol}}$ hydrogen bond gives rise to chains lying parallel to $[20\bar{1}]$. A short intermolecular $\text{Br}\cdots\text{O}_{\text{morpholine}}$ interaction is also present [$3.1338(19)$ Å].

Related literature

For details of the synthesis, see: Seliger *et al.* (1997). For a recent review on thiazoles, see: Zagade & Senthilkumar (2011). For the pharmacological activity and applications of thiazole derivatives, see: Ghaemmaghami *et al.* (2010); Coco & Onnis (1993); Gewald *et al.* (1994); Tanaka *et al.* (1994); Zimmermann *et al.* (1990).



Experimental

Crystal data

 $\text{C}_{14}\text{H}_{15}\text{BrN}_2\text{O}_2\text{S}$
 $M_r = 355.25$ Monoclinic, $P2_1/c$
 $a = 12.026(2)$ Å $b = 8.3448(17)$ Å
 $c = 14.279(3)$ Å
 $\beta = 91.98(3)^\circ$
 $V = 1432.1(5)$ Å³
 $Z = 4$ Mo $K\alpha$ radiation
 $\mu = 3.02$ mm⁻¹
 $T = 153$ K
 $0.60 \times 0.50 \times 0.50$ mm

Data collection

Stoe IPDS 2T area-detector diffractometer
Absorption correction: for a sphere [modification of the interpolation procedure of Dwiggins (1975)]
 $T_{\text{min}} = 0.090$, $T_{\text{max}} = 0.117$ 9876 measured reflections
3848 independent reflections
3258 reflections with $I > 2\sigma(I)$
 $R_{\text{int}} = 0.049$

Refinement

 $R[F^2 > 2\sigma(F^2)] = 0.038$
 $wR(F^2) = 0.088$
 $S = 1.11$
3848 reflections
186 parametersH atoms treated by a mixture of independent and constrained refinement
 $\Delta\rho_{\text{max}} = 0.41$ e Å⁻³
 $\Delta\rho_{\text{min}} = -0.83$ e Å⁻³

Table 1

Hydrogen-bond geometry (Å, °).

| $D-\text{H}\cdots A$ | $D-\text{H}$ | $\text{H}\cdots A$ | $D\cdots A$ | $D-\text{H}\cdots A$ |
|---|--------------|--------------------|-------------|----------------------|
| $\text{O1}-\text{H1}\cdots\text{N1}$ | 0.88 (4) | 1.79 (3) | 2.603 (2) | 154 (3) |
| $\text{C9}-\text{H9C}\cdots\text{O1}^i$ | 0.98 | 2.47 | 3.357 (3) | 150 |

Symmetry code: (i) $x, -y + \frac{1}{2}, z + \frac{1}{2}$.

Data collection: *X-Area* (Stoe & Cie, 2002); cell refinement: *X-Area*; data reduction: *X-Red* (Stoe & Cie, 2002); program(s) used to solve structure: *SHELXS97* (Sheldrick, 2008); program(s) used to refine structure: *SHELXL97* (Sheldrick, 2008); molecular graphics: *XP* in *SHELXTL* (Sheldrick, 2008); software used to prepare material for publication: *SHELXL97*.

Part of this work was supported by a grant of the Romanian National Authority for Scientific Research, CNDI-UEFISCDI, project No. 51/2012.

Supplementary data and figures for this paper are available from the IUCr electronic archives (Reference: ZS2266).

References

- Coco, M. T. & Onnis, V. (1993). *Synthesis*, pp. 199–201.
Dwiggins, C. W. (1975). *Acta Cryst.* **A31**, 146–148.
Gewald, K., Hain, U., Schindler, R. & Gruner, M. (1994). *Monatsh. Chem.* **125**, 1129–1143.
Ghaemmaghami, S., May, B. C. H., Renslo, A. R. & Prusiner, S. B. (2010). *J. Virol.* **84**, 3408–3412.
Seliger, H., Happ, E., Cascaval, A., Birsa, M. L. & Novitschi, G. (1997). *An. St. Univ. Al. I. Cuza Iasi*, **5**, 123–128.
Sheldrick, G. M. (2008). *Acta Cryst.* **A64**, 112–122.
Stoe & Cie (2002). *X-Area* and *X-Red*. Stoe & Cie, Darmstadt, Germany.
Tanaka, A., Sakai, H., Motoyama, Y., Ishikawa, T. & Takasugi, H. (1994). *J. Med. Chem.* **37**, 1189–1199.
Zagade, A. A. & Senthilkumar, G. P. (2011). *Pharma Chem.* **3**, 523–537.
Zimmermann, T., Fischer, G. W., Teller, J., Dehne, H. & Olk, B. (1990). *J. Prakt. Chem.* **332**, 723–730.

supporting information

Acta Cryst. (2013). E69, o1170 [https://doi.org/10.1107/S1600536813017510]

4-Bromo-2-[5-methyl-2-(morpholin-4-yl)-1,3-thiazol-4-yl]phenol

Lucian G. Bahrin, Cristian G. Hrib and Lucian M. Birsa

S1. Comment

Many derivatives of thiazole exhibit pharmacological activities (Coco & Onnis, 1993; Zagade & Senthilkumar, 2011)) and some of them are used as chemotherapeutic agents with anti-inflammatory, analgesic and antipyretic activities (Tanaka *et al.*, 1994). Recently, 2-aminothiazoles were described as a new class of small molecules with antiprion activity in prion-infected neuroblastoma cell lines (Ghaemmaghani *et al.*, 2010). On the other hand, thiocyanates play an important role in the chemistry of organosulfur compounds (Gewald *et al.*, 1994). Among these alkyl 2-thiocyanato phenylketones there are versatile precursors for various substituted thiazoles (Zimmermann *et al.*, 1990). The title compound, C₁₄H₁₅BrN₂O₂S, has been synthesized by the reaction of 1-(5-bromo-2-hydroxyphenyl)-2-thiocyanatopropan-1-one with morpholine and the structure is reported herein. In this compound (Fig. 1), although an intramolecular hydrogen bond is present between the phenolic O1—H group and N1 of the thiazole ring (Table 1), the benzene and thiazole rings are not coplanar, with a dihedral angle of 23.46 (10) ° between them. The steric influence of the methyl substituent group in the 5-position of the thiazole ring is considered to be responsible for this deviation. In the crystal, only a weak intermolecular C9—H···O1ⁱ (phenol) hydrogen-bonding association is present, giving a one-dimensional chain lying parallel to [2 0 -1], while a short Br···O2ⁱⁱ (morpholine) interaction [3.1338 (19) Å] is also found [for symmetry code (ii): $x - 1, -y + 1/2, z + 1/2$].

S2. Experimental

A mixture of 1-(5-bromo-2-hydroxyphenyl)-2-thiocyanatopropan-1-one (0.3 mmol) and morpholine (0.45 mmol) in 50 ml of methanol was heated under reflux for 20 min (Seliger *et al.*, 1997). After 24 h the reaction mixture was poured into water and the precipitate filtered off and dried. Recrystallization from methanol gave the pure product as colorless crystals, m.p. 415 K.

S3. Refinement

The C-bound H-atoms were included at calculated positions and treated using a riding model, with aromatic C—H = 0.95 Å and methylene C—H = 0.99 Å, and with $U_{\text{iso}}(\text{H}) = 1.2U_{\text{eq}}(\text{C})$, or with methyl C—H = 0.98 Å, with $U_{\text{iso}}(\text{H}) = 1.5U_{\text{eq}}(\text{C})$. The phenolic H-atom (H1) was freely refined.

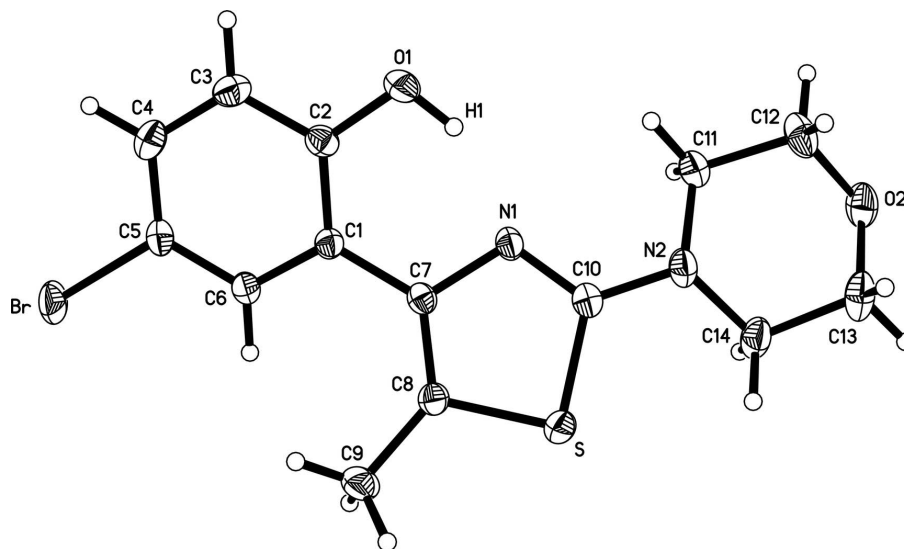


Figure 1

Molecular conformation and atom numbering scheme for the title compound, showing thermal ellipsoids drawn at the 50% probability level.

4-Bromo-2-[5-methyl-2-(morpholin-4-yl)-1,3-thiazol-4-yl]phenol

Crystal data

$C_{14}H_{15}BrN_2O_2S$

$M_r = 355.25$

Monoclinic, $P2_1/c$

Hall symbol: -P 2ybc

$a = 12.026$ (2) Å

$b = 8.3448$ (17) Å

$c = 14.279$ (3) Å

$\beta = 91.98$ (3)°

$V = 1432.1$ (5) Å³

$Z = 4$

$F(000) = 720$

$D_x = 1.648$ Mg m⁻³

Melting point: 415 K

Mo $K\alpha$ radiation, $\lambda = 0.71073$ Å

Cell parameters from 13229 reflections

$\theta = 2.3$ – 29.5 °

$\mu = 3.02$ mm⁻¹

$T = 153$ K

Prism, colourless

$0.60 \times 0.50 \times 0.50$ mm

Data collection

Stoe IPDS 2T area-detector
diffractometer

Radiation source: fine-focus sealed tube

Graphite monochromator

Detector resolution: 6.67 pixels mm⁻¹

rotation method scans

Absorption correction: for a sphere

[modification of the interpolation procedure of
Dwiggins (1975)]

$T_{\min} = 0.090$, $T_{\max} = 0.117$

9876 measured reflections

3848 independent reflections

3258 reflections with $I > 2\sigma(I)$

$R_{\text{int}} = 0.049$

$\theta_{\max} = 29.2$ °, $\theta_{\min} = 2.8$ °

$h = -16 \rightarrow 15$

$k = -9 \rightarrow 11$

$l = -19 \rightarrow 19$

Refinement

Refinement on F^2

Least-squares matrix: full

$R[F^2 > 2\sigma(F^2)] = 0.038$

$wR(F^2) = 0.088$

$S = 1.11$

3848 reflections

186 parameters

0 restraints

Primary atom site location: structure-invariant
direct methods

Secondary atom site location: difference Fourier
map

Hydrogen site location: inferred from
neighbouring sites
H atoms treated by a mixture of independent
and constrained refinement

$$w = 1/[\sigma^2(F_o^2) + (0.0461P)^2 + 0.1469P]$$

where $P = (F_o^2 + 2F_c^2)/3$

$$(\Delta/\sigma)_{\max} = 0.001$$

$$\Delta\rho_{\max} = 0.41 \text{ e } \text{\AA}^{-3}$$

$$\Delta\rho_{\min} = -0.83 \text{ e } \text{\AA}^{-3}$$

Special details

Experimental. Absorption correction: interpolation using International Tables Vol C, Table 6.3.3.3 for values of μR in the range 0-2.5, and International Tables Vol. II, Table 5.3.6 B for μR in the range 2.6-10.0. The interpolation procedure (Dwiggins, 1975) is used with some modification.

Geometry. All e.s.d.'s (except the e.s.d. in the dihedral angle between two l.s. planes) are estimated using the full covariance matrix. The cell e.s.d.'s are taken into account individually in the estimation of e.s.d.'s in distances, angles and torsion angles; correlations between e.s.d.'s in cell parameters are only used when they are defined by crystal symmetry. An approximate (isotropic) treatment of cell e.s.d.'s is used for estimating e.s.d.'s involving l.s. planes.

Refinement. Refinement of F^2 against ALL reflections. The weighted R -factor wR and goodness of fit S are based on F^2 , conventional R -factors R are based on F , with F set to zero for negative F^2 . The threshold expression of $F^2 > \sigma(F^2)$ is used only for calculating R -factors(gt) *etc.* and is not relevant to the choice of reflections for refinement. R -factors based on F^2 are statistically about twice as large as those based on F , and R -factors based on ALL data will be even larger.

Fractional atomic coordinates and isotropic or equivalent isotropic displacement parameters (\AA^2)

| | <i>x</i> | <i>y</i> | <i>z</i> | $U_{\text{iso}}^*/U_{\text{eq}}$ |
|------|---------------|-------------|---------------|----------------------------------|
| Br | 0.515026 (19) | 0.18718 (4) | 0.289067 (16) | 0.03329 (9) |
| S | 1.07362 (5) | 0.49527 (7) | 0.18671 (4) | 0.02323 (12) |
| N1 | 0.97746 (14) | 0.3026 (2) | 0.07003 (11) | 0.0188 (3) |
| N2 | 1.16473 (15) | 0.3560 (2) | 0.03586 (13) | 0.0234 (4) |
| O1 | 0.81067 (15) | 0.2233 (2) | -0.04145 (11) | 0.0267 (3) |
| H1 | 0.878 (3) | 0.246 (5) | -0.020 (2) | 0.046 (10)* |
| O2 | 1.36387 (13) | 0.2471 (2) | -0.04068 (13) | 0.0293 (4) |
| C1 | 0.78829 (17) | 0.2697 (2) | 0.12458 (13) | 0.0177 (4) |
| C2 | 0.74833 (18) | 0.2161 (2) | 0.03574 (14) | 0.0197 (4) |
| C3 | 0.6411 (2) | 0.1562 (3) | 0.02405 (15) | 0.0243 (4) |
| H3 | 0.6152 | 0.1216 | -0.0362 | 0.029* |
| C4 | 0.57136 (19) | 0.1461 (3) | 0.09870 (16) | 0.0246 (4) |
| H4 | 0.4977 | 0.1064 | 0.0901 | 0.030* |
| C5 | 0.61071 (17) | 0.1947 (3) | 0.18592 (15) | 0.0228 (4) |
| C6 | 0.71723 (17) | 0.2532 (3) | 0.20010 (14) | 0.0207 (4) |
| H6 | 0.7428 | 0.2826 | 0.2614 | 0.025* |
| C7 | 0.89932 (17) | 0.3417 (2) | 0.13651 (13) | 0.0175 (4) |
| C8 | 0.93562 (18) | 0.4462 (3) | 0.20449 (13) | 0.0202 (4) |
| C9 | 0.8786 (2) | 0.5237 (3) | 0.28400 (15) | 0.0287 (5) |
| H9A | 0.7991 | 0.5347 | 0.2680 | 0.043* |
| H9B | 0.9109 | 0.6299 | 0.2959 | 0.043* |
| H9C | 0.8885 | 0.4574 | 0.3403 | 0.043* |
| C10 | 1.07224 (17) | 0.3740 (3) | 0.08740 (13) | 0.0192 (4) |
| C11 | 1.16493 (19) | 0.2173 (3) | -0.02754 (16) | 0.0264 (5) |
| H11A | 1.0941 | 0.2138 | -0.0650 | 0.032* |
| H11B | 1.1712 | 0.1173 | 0.0096 | 0.032* |
| C12 | 1.2614 (2) | 0.2291 (3) | -0.09224 (16) | 0.0306 (5) |
| H12A | 1.2643 | 0.1312 | -0.1313 | 0.037* |

| | | | | |
|------|--------------|------------|--------------|------------|
| H12B | 1.2501 | 0.3221 | -0.1346 | 0.037* |
| C13 | 1.3625 (2) | 0.3931 (3) | 0.01061 (19) | 0.0319 (5) |
| H13A | 1.3499 | 0.4837 | -0.0333 | 0.038* |
| H13B | 1.4356 | 0.4091 | 0.0433 | 0.038* |
| C14 | 1.27235 (18) | 0.3918 (3) | 0.08152 (17) | 0.0277 (5) |
| H14A | 1.2898 | 0.3100 | 0.1300 | 0.033* |
| H14B | 1.2691 | 0.4976 | 0.1127 | 0.033* |

Atomic displacement parameters (Å²)

| | U^{11} | U^{22} | U^{33} | U^{12} | U^{13} | U^{23} |
|-----|--------------|--------------|--------------|---------------|--------------|---------------|
| Br | 0.01940 (12) | 0.04914 (17) | 0.03197 (13) | -0.00366 (10) | 0.01020 (8) | 0.00066 (10) |
| S | 0.0216 (2) | 0.0252 (3) | 0.0229 (2) | -0.0066 (2) | 0.00275 (18) | -0.00190 (19) |
| N1 | 0.0156 (8) | 0.0218 (8) | 0.0193 (7) | 0.0014 (7) | 0.0033 (6) | 0.0000 (6) |
| N2 | 0.0166 (8) | 0.0258 (9) | 0.0283 (8) | 0.0011 (7) | 0.0060 (7) | 0.0003 (7) |
| O1 | 0.0285 (9) | 0.0336 (9) | 0.0184 (6) | -0.0062 (7) | 0.0059 (6) | -0.0048 (6) |
| O2 | 0.0178 (7) | 0.0303 (9) | 0.0402 (9) | 0.0059 (7) | 0.0060 (7) | 0.0021 (7) |
| C1 | 0.0160 (9) | 0.0180 (9) | 0.0192 (8) | 0.0005 (7) | 0.0012 (7) | -0.0009 (7) |
| C2 | 0.0229 (10) | 0.0171 (9) | 0.0192 (8) | -0.0003 (8) | 0.0026 (7) | -0.0006 (7) |
| C3 | 0.0262 (11) | 0.0233 (11) | 0.0230 (9) | -0.0043 (8) | -0.0024 (8) | -0.0023 (8) |
| C4 | 0.0185 (10) | 0.0227 (11) | 0.0325 (10) | -0.0032 (8) | -0.0008 (8) | 0.0027 (8) |
| C5 | 0.0166 (9) | 0.0269 (10) | 0.0251 (9) | -0.0001 (8) | 0.0052 (7) | 0.0003 (8) |
| C6 | 0.0172 (9) | 0.0255 (10) | 0.0196 (8) | 0.0008 (8) | 0.0025 (7) | -0.0016 (7) |
| C7 | 0.0178 (9) | 0.0186 (9) | 0.0162 (8) | 0.0013 (7) | 0.0021 (7) | 0.0016 (7) |
| C8 | 0.0203 (9) | 0.0220 (9) | 0.0184 (8) | -0.0039 (8) | 0.0030 (7) | 0.0006 (7) |
| C9 | 0.0338 (12) | 0.0316 (12) | 0.0211 (9) | -0.0071 (10) | 0.0091 (8) | -0.0055 (8) |
| C10 | 0.0185 (9) | 0.0198 (9) | 0.0193 (8) | 0.0019 (8) | 0.0020 (7) | 0.0027 (7) |
| C11 | 0.0210 (10) | 0.0330 (12) | 0.0257 (10) | 0.0009 (9) | 0.0062 (8) | -0.0036 (9) |
| C12 | 0.0223 (11) | 0.0424 (14) | 0.0275 (10) | 0.0093 (10) | 0.0076 (9) | 0.0050 (9) |
| C13 | 0.0199 (10) | 0.0258 (12) | 0.0506 (14) | 0.0006 (9) | 0.0108 (10) | 0.0054 (10) |
| C14 | 0.0169 (10) | 0.0257 (11) | 0.0407 (12) | -0.0002 (8) | 0.0047 (9) | -0.0017 (9) |

Geometric parameters (Å, °)

| | | | |
|--------|-----------|----------|-----------|
| Br—C5 | 1.901 (2) | C4—H4 | 0.9500 |
| S—C8 | 1.736 (2) | C5—C6 | 1.379 (3) |
| S—C10 | 1.742 (2) | C6—H6 | 0.9500 |
| N1—C10 | 1.302 (3) | C7—C8 | 1.365 (3) |
| N1—C7 | 1.397 (2) | C8—C9 | 1.493 (3) |
| N2—C10 | 1.363 (3) | C9—H9A | 0.9800 |
| N2—C14 | 1.460 (3) | C9—H9B | 0.9800 |
| N2—C11 | 1.470 (3) | C9—H9C | 0.9800 |
| O1—C2 | 1.356 (2) | C11—C12 | 1.511 (3) |
| O1—H1 | 0.88 (4) | C11—H11A | 0.9900 |
| O2—C12 | 1.421 (3) | C11—H11B | 0.9900 |
| O2—C13 | 1.422 (3) | C12—H12A | 0.9900 |
| C1—C6 | 1.406 (3) | C12—H12B | 0.9900 |
| C1—C2 | 1.414 (3) | C13—C14 | 1.509 (3) |

| | | | |
|-------------|--------------|---------------|--------------|
| C1—C7 | 1.469 (3) | C13—H13A | 0.9900 |
| C2—C3 | 1.388 (3) | C13—H13B | 0.9900 |
| C3—C4 | 1.381 (3) | C14—H14A | 0.9900 |
| C3—H3 | 0.9500 | C14—H14B | 0.9900 |
| C4—C5 | 1.378 (3) | | |
| C8—S—C10 | 89.99 (10) | C8—C9—H9B | 109.5 |
| C10—N1—C7 | 111.64 (17) | H9A—C9—H9B | 109.5 |
| C10—N2—C14 | 117.64 (18) | C8—C9—H9C | 109.5 |
| C10—N2—C11 | 115.96 (18) | H9A—C9—H9C | 109.5 |
| C14—N2—C11 | 114.56 (18) | H9B—C9—H9C | 109.5 |
| C2—O1—H1 | 105 (2) | N1—C10—N2 | 124.91 (19) |
| C12—O2—C13 | 109.38 (18) | N1—C10—S | 113.85 (14) |
| C6—C1—C2 | 117.42 (19) | N2—C10—S | 121.22 (17) |
| C6—C1—C7 | 121.71 (18) | N2—C11—C12 | 110.0 (2) |
| C2—C1—C7 | 120.87 (17) | N2—C11—H11A | 109.7 |
| O1—C2—C3 | 117.13 (19) | C12—C11—H11A | 109.7 |
| O1—C2—C1 | 122.35 (19) | N2—C11—H11B | 109.7 |
| C3—C2—C1 | 120.50 (18) | C12—C11—H11B | 109.7 |
| C4—C3—C2 | 121.0 (2) | H11A—C11—H11B | 108.2 |
| C4—C3—H3 | 119.5 | O2—C12—C11 | 111.13 (19) |
| C2—C3—H3 | 119.5 | O2—C12—H12A | 109.4 |
| C5—C4—C3 | 118.7 (2) | C11—C12—H12A | 109.4 |
| C5—C4—H4 | 120.6 | O2—C12—H12B | 109.4 |
| C3—C4—H4 | 120.6 | C11—C12—H12B | 109.4 |
| C4—C5—C6 | 121.68 (19) | H12A—C12—H12B | 108.0 |
| C4—C5—Br | 119.49 (16) | O2—C13—C14 | 111.12 (19) |
| C6—C5—Br | 118.81 (16) | O2—C13—H13A | 109.4 |
| C5—C6—C1 | 120.55 (19) | C14—C13—H13A | 109.4 |
| C5—C6—H6 | 119.7 | O2—C13—H13B | 109.4 |
| C1—C6—H6 | 119.7 | C14—C13—H13B | 109.4 |
| C8—C7—N1 | 115.22 (18) | H13A—C13—H13B | 108.0 |
| C8—C7—C1 | 127.65 (18) | N2—C14—C13 | 110.4 (2) |
| N1—C7—C1 | 117.12 (17) | N2—C14—H14A | 109.6 |
| C7—C8—C9 | 132.3 (2) | C13—C14—H14A | 109.6 |
| C7—C8—S | 109.29 (15) | N2—C14—H14B | 109.6 |
| C9—C8—S | 118.36 (16) | C13—C14—H14B | 109.6 |
| C8—C9—H9A | 109.5 | H14A—C14—H14B | 108.1 |
| C6—C1—C2—O1 | -178.6 (2) | N1—C7—C8—S | -1.2 (2) |
| C7—C1—C2—O1 | 2.2 (3) | C1—C7—C8—S | -179.83 (17) |
| C6—C1—C2—C3 | 2.7 (3) | C10—S—C8—C7 | 0.98 (16) |
| C7—C1—C2—C3 | -176.49 (19) | C10—S—C8—C9 | -177.13 (18) |
| O1—C2—C3—C4 | -179.3 (2) | C7—N1—C10—N2 | 178.48 (19) |
| C1—C2—C3—C4 | -0.6 (3) | C7—N1—C10—S | -0.1 (2) |
| C2—C3—C4—C5 | -0.9 (3) | C14—N2—C10—N1 | -157.2 (2) |
| C3—C4—C5—C6 | 0.2 (4) | C11—N2—C10—N1 | -16.2 (3) |
| C3—C4—C5—Br | 178.34 (17) | C14—N2—C10—S | 21.2 (3) |

| | | | |
|--------------|--------------|----------------|--------------|
| C4—C5—C6—C1 | 2.0 (4) | C11—N2—C10—S | 162.21 (16) |
| Br—C5—C6—C1 | -176.16 (17) | C8—S—C10—N1 | -0.55 (17) |
| C2—C1—C6—C5 | -3.4 (3) | C8—S—C10—N2 | -179.14 (19) |
| C7—C1—C6—C5 | 175.8 (2) | C10—N2—C11—C12 | 169.71 (19) |
| C10—N1—C7—C8 | 0.9 (3) | C14—N2—C11—C12 | -48.1 (3) |
| C10—N1—C7—C1 | 179.61 (18) | C13—O2—C12—C11 | -62.9 (3) |
| C6—C1—C7—C8 | -23.9 (3) | N2—C11—C12—O2 | 54.7 (3) |
| C2—C1—C7—C8 | 155.3 (2) | C12—O2—C13—C14 | 62.7 (3) |
| C6—C1—C7—N1 | 157.5 (2) | C10—N2—C14—C13 | -170.3 (2) |
| C2—C1—C7—N1 | -23.3 (3) | C11—N2—C14—C13 | 48.2 (3) |
| N1—C7—C8—C9 | 176.5 (2) | O2—C13—C14—N2 | -54.7 (3) |
| C1—C7—C8—C9 | -2.1 (4) | | |

Hydrogen-bond geometry (Å, °)

| <i>D</i> —H \cdots <i>A</i> | <i>D</i> —H | H \cdots <i>A</i> | <i>D</i> \cdots <i>A</i> | <i>D</i> —H \cdots <i>A</i> |
|---------------------------------|-------------|---------------------|----------------------------|-------------------------------|
| O1—H1 \cdots N1 | 0.88 (4) | 1.79 (3) | 2.603 (2) | 154 (3) |
| C9—H9C \cdots O1 ⁱ | 0.98 | 2.47 | 3.357 (3) | 150 |

Symmetry code: (i) *x*, -*y*+1/2, *z*+1/2.