

Acta Crystallographica Section E

## Structure Reports

Online

ISSN 1600-5368

# 1,8-Bis(4-fluorobenzoyl)naphthalen-2,7-diyl dimethanesulfonate

Daichi Hijikata,<sup>a</sup> Rei Sakamoto,<sup>a</sup> Katsuhiko Isozaki,<sup>b</sup>  
Noriyuki Yonezawa<sup>a</sup> and Akiko Okamoto<sup>a\*</sup>

<sup>a</sup>Department of Organic and Polymer Materials Chemistry, Tokyo University of Agriculture & Technology (TUAT), Koganei, Tokyo 184-8588, Japan, and  
<sup>b</sup>International Research Center for Elements Science, Institute for Chemical Research, Kyoto University, Gokasho, Uji, Kyoto 611-0011, Japan

Correspondence e-mail: aokamoto@cc.tuat.ac.jp

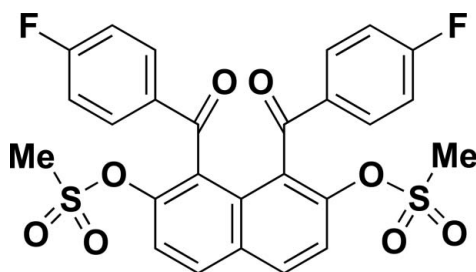
Received 7 March 2013; accepted 11 March 2013

Key indicators: single-crystal X-ray study;  $T = 173$  K; mean  $\sigma(\text{C}-\text{C}) = 0.004$  Å;  $R$  factor = 0.053;  $wR$  factor = 0.120; data-to-parameter ratio = 13.6.

The molecule of the title compound,  $\text{C}_{26}\text{H}_{18}\text{F}_2\text{O}_8\text{S}_2$ , lies across a crystallographic twofold rotation axis. The benzene rings of the 4-fluorobenzoyl groups make dihedral angles of  $78.93$  ( $12^\circ$ ) with the naphthalene ring system. An intramolecular  $\text{C}-\text{H}\cdots\pi$  interaction occurs. In the crystal, a number of  $\text{C}-\text{H}\cdots\text{O}$  interactions link the molecules, forming a three-dimensional structure.

## Related literature

For electrophilic aromatic arylation of the naphthalene core, see: Okamoto & Yonezawa (2009); Okamoto *et al.* (2011). For the crystal structures of closely related compounds, see: Watanabe *et al.* (2010); Tsumuki *et al.* (2011); Hijikata *et al.* (2010, 2012); Sasagawa *et al.* (2013).



## Experimental

### Crystal data

$\text{C}_{26}\text{H}_{18}\text{F}_2\text{O}_8\text{S}_2$   
 $M_r = 560.52$   
Monoclinic,  $C2/c$   
 $a = 7.376$  (3) Å  
 $b = 16.468$  (7) Å  
 $c = 20.075$  (9) Å  
 $\beta = 96.123$  (6)°

$V = 2424.4$  (19) Å<sup>3</sup>  
 $Z = 4$   
Mo  $K\alpha$  radiation  
 $\mu = 0.29$  mm<sup>-1</sup>  
 $T = 173$  K  
 $0.10 \times 0.10 \times 0.05$  mm

### Data collection

Rigaku Saturn70 diffractometer  
Absorption correction: numerical  
(NUMABS; Higashi, 1999)  
 $T_{\min} = 0.945$ ,  $T_{\max} = 0.945$

8755 measured reflections  
2360 independent reflections  
1617 reflections with  $I > 2\sigma(I)$   
 $R_{\text{int}} = 0.074$

### Refinement

$R[F^2 > 2\sigma(F^2)] = 0.053$   
 $wR(F^2) = 0.120$   
 $S = 1.03$   
2360 reflections

173 parameters  
H-atom parameters constrained  
 $\Delta\rho_{\text{max}} = 0.29$  e Å<sup>-3</sup>  
 $\Delta\rho_{\text{min}} = -0.33$  e Å<sup>-3</sup>

**Table 1**

Hydrogen-bond geometry (Å, °).

$C_g$  is the centroid of the C8–C13 ring.

$D-H\cdots A$	$D-H$	$H\cdots A$	$D\cdots A$	$D-H\cdots A$
C14–H14A $\cdots C_g$	0.98	2.87	3.805 (4)	160
C14–H14B $\cdots O1^i$	0.98	2.45	3.399 (4)	163
C14–H14C $\cdots O4^{ii}$	0.98	2.46	3.304 (4)	144
C12–H12 $\cdots O4^{iii}$	0.95	2.50	3.285 (4)	140
C4–H4 $\cdots O1^{iv}$	0.95	2.54	3.415 (4)	153

Symmetry codes: (i)  $-x, y, -z + \frac{1}{2}$ ; (ii)  $-x, -y + 2, -z + 1$ ; (iii)  $-x + 1, -y + 2, -z + 1$ ; (iv)  $-x + \frac{1}{2}, y + \frac{1}{2}, -z + \frac{1}{2}$ .

Data collection: *CrystalClear* (Rigaku/MSC, 2006); cell refinement: *CrystalClear*; data reduction: *CrystalClear*; program(s) used to solve structure: *Il Milione* (Burla *et al.*, 2007); program(s) used to refine structure: *SHELXL97* (Sheldrick, 2008); molecular graphics: *ORTEP III* (Burnett & Johnson, 1996); software used to prepare material for publication: *SHELXL97*.

The authors express their gratitude to Associate Professor Hikaru Takaya and Professor Masaharu Nakamura, Institute for Chemical Research, Kyoto University, for their kind advice. This work was partially supported by the Collaborative Research Program of the Institute for Chemical Research, Kyoto University (grant No. 2012–72).

Supplementary data and figures for this paper are available from the IUCr electronic archives (Reference: SU2570).

## References

- Burla, M. C., Caliandro, R., Camalli, M., Carrozzini, B., Cascarano, G. L., De Caro, L., Giovacazzo, C., Polidori, G., Siliqi, D. & Spagna, R. (2007). *J. Appl. Cryst.* **40**, 609–613.
- Burnett, M. N. & Johnson, C. K. (1996). *ORTEP III*. Report ORNL-6895. Oak Ridge National Laboratory, Tennessee, USA.
- Higashi, T. (1999). *NUMABS*. Rigaku Corporation, Tokyo, Japan.
- Hijikata, D., Sasagawa, K., Yoshiwaka, S., Okamoto, A. & Yonezawa, N. (2012). *Acta Cryst.* **E68**, o3246.
- Hijikata, D., Takada, T., Nagasawa, A., Okamoto, A. & Yonezawa, N. (2010). *Acta Cryst.* **E66**, o2902–o2903.
- Okamoto, A., Mitsui, R., Oike, H. & Yonezawa, N. (2011). *Chem. Lett.* **40**, 1283–1284.
- Okamoto, A. & Yonezawa, N. (2009). *Chem. Lett.* **38**, 914–915.
- Rigaku/MSC (2006). *CrystalClear*. Rigaku/MSC, The Woodlands, Texas, USA, and Rigaku Corporation, Tokyo, Japan.
- Sasagawa, K., Takeuchi, R., Kusakabe, T., Yonezawa, N. & Okamoto, A. (2013). *Acta Cryst.* **E69**, o444–o445.
- Sheldrick, G. M. (2008). *Acta Cryst.* **A64**, 112–122.
- Tsumuki, T., Hijikata, D., Okamoto, A., Oike, H. & Yonezawa, N. (2011). *Acta Cryst.* **E67**, o2095.
- Watanabe, S., Nagasawa, A., Okamoto, A., Noguchi, K. & Yonezawa, N. (2010). *Acta Cryst.* **E66**, o329.

## supporting information

*Acta Cryst.* (2013). E69, o544 [doi:10.1107/S1600536813006788]

## 1,8-Bis(4-fluorobenzoyl)naphthalen-2,7-diyl dimethanesulfonate

Daichi Hijikata, Rei Sakamoto, Katsuhiko Isozaki, Noriyuki Yonezawa and Akiko Okamoto

### S1. Comment

In the course of our study on electrophilic aromatic arylation of 2,7-dimethoxynaphthalene, *peri*-arylnaphthalene compounds have proven to be formed regioselectively with the aid of suitable acidic mediators (Okamoto & Yonezawa, 2009; Okamoto *et al.*, 2011). Under these circumstances, the authors have stimulated the X-ray crystal structural study of 1,8-diaroylated 2,7-dimethoxynaphthalene analogues exemplified by 1,8-bis(4-fluorobenzoyl)-2,7-dimethoxynaphthalene [(2,7-dimethoxynaphthalene-1,8-diyl)bis(4-fluorophenyl)dimethanone; Watanabe *et al.*, 2010] and 2,7-dimethoxy-1,8-bis-(2-naphthoyl)naphthalene {[2,7-dimethoxy-8-(2-naphthoyl)naphthalen-1-yl](naphthalen-2-yl)methanone; Tsumuki *et al.*, 2011}.

Accordingly, to the best of our knowledge, these molecules have essentially the same non-coplanar features, namely: The aryl groups at the 1,8-positions of the naphthalene ring are bonded in an almost perpendicular fashion and oriented in opposite directions (*anti*-orientation), but the benzene ring moieties of the aryl groups tilt slightly toward the *exo* sides of the naphthalene ring. Recently, the authors have described the crystal structures of 1,8-diaroylated 2,7-dimethoxynaphthalene analogues, in which the two aryl groups are situated in the same direction (*syn*-orientation), that is, 2,7-dimethoxy-1,8-bis(4-phenoxybenzoyl)naphthalene (Hijikata *et al.*, 2010) and 2,7-dimethoxy-1,8-bis(4-isopropoxybenzoyl)naphthalene [{2,7-dimethoxy-8-[4-(propan-2-yloxy)benzoyl]naphthalen-1-yl}[4-(propan-2-yloxy)phenyl]methanone; Sasagawa *et al.*, 2013].

The authors then investigated the correlation between the aryl groups and the neighbouring groups in the spatial organization of 1,8-diaroylnaphthalenes. In the crystal structure of 1,8-bis(4-fluorobenzoyl)-2,7-diphenoxy-naphthalene [(4-fluorophenyl)[8-(4-fluorobenzoyl)-2,7-diphenoxy-naphthalen-1-yl]methanone; Hijikata *et al.*, 2012], two phenoxy groups are asymmetrically situated with respect to the adjacent aryl groups. One phenoxy group is horizontal to the aryl group, whereas another phenoxy group leans toward the naphthalene ring. As a part of our continuous study on the molecular structures of this kind of homologous molecules, the crystal structure of title compound is presented herein.

The molecule of the title compound lies across a crystallographic 2-fold axis, Fig. 1, so that the asymmetric unit contains one-half of the molecule. Thus, the two aryl groups are situated in an *anti* orientation and twisted away from the naphthalene ring. The benzene ring of the aryl group make a dihedral angle of 78.93 (12) ° with the naphthalene ring. The dihedral angle between the benzene rings of the aryl groups is 21.55 (15) °. There are two intramolecular C—H $\cdots$  $\pi$  interactions in the molecule involving one methyl H atom (H14A) of the methanesulfonyl group and the phenyl ring of the 4-fluorobenzoyl group (Fig. 1 and Table 1).

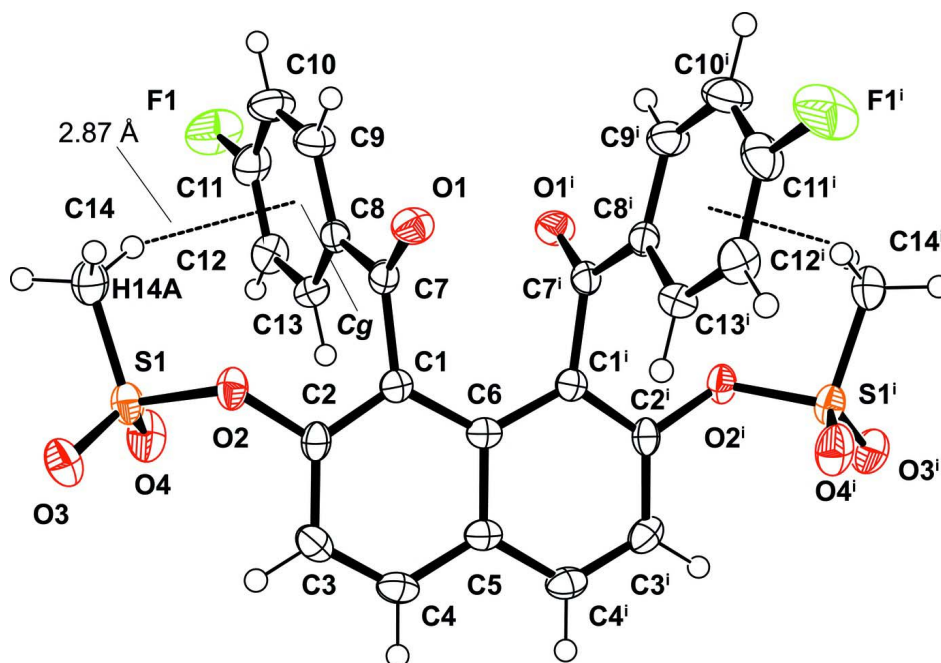
In the crystal, the ketonic carbonyl oxygen atom (O1) and the sulfonyl oxygen atom (O4) are involved in C—H $\cdots$ O interactions (Fig. 2 and Table 1). These interactions contribute to the stabilization of the packing and lead to the formation a three-dimensional structure (Fig. 2 and Table 1).

## S2. Experimental

1,8-bis(4-fluorobenzoyl)-2,7-dihydroxynaphthalene (1.0 mmol, 404 mg), methanesulfonyl chloride (2.4 mmol, 487 mg), pyridine (10.0 mmol, 791 mg), and methylene chloride (2.5 ml) were placed in a 10 ml flask. The mixture was stirred at room temperature for 24 h. After the reaction, the mixture was extracted with  $\text{CHCl}_3$ . The combined extracts were washed with 2 M aqueous HCl followed by washing with brine. The organic layers thus obtained were dried over anhydrous  $\text{MgSO}_4$ . The solvent was removed under reduced pressure to give cake. The crude product was purified by recrystallization from AcOEt–hexane ( $v/v=2:1$ ) [55% isolated yield; M.p. 507.4 K], giving colourless block-like crystals. Spectroscopic data for the title compound are available in the archived CIF.

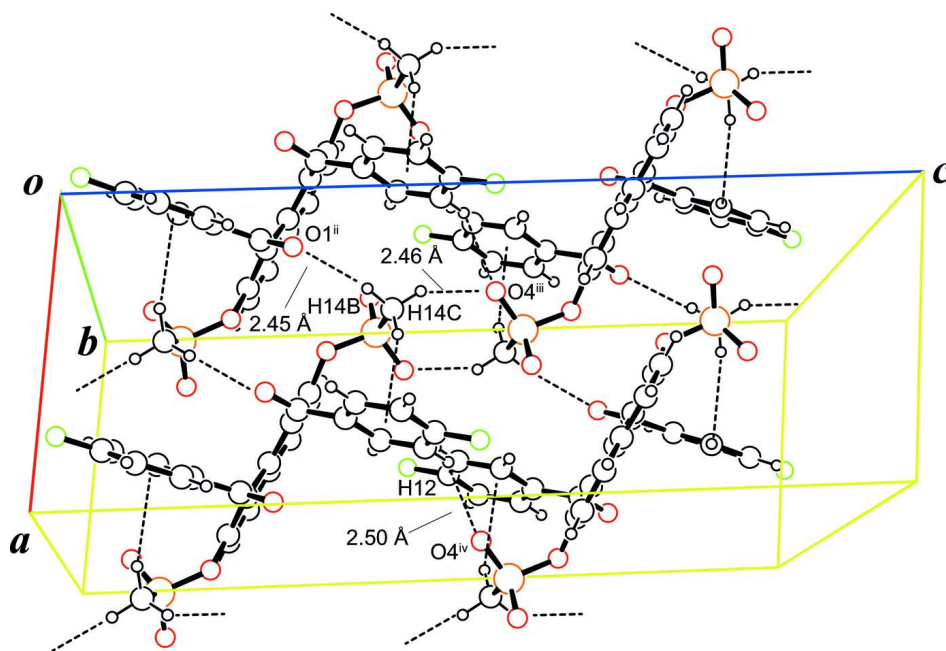
## S3. Refinement

All H atoms were placed in calculated positions and treated as riding on their parent atoms: C—H = 0.95 (aromatic C—H), 0.98 (methyl) and  $U_{\text{iso}}(\text{H}) = 1.2U_{\text{eq}}$  (aromatic C, methyl C). The positions of methyl H atoms were rotationally optimized.



**Figure 1**

The molecular structure of title molecule, with atom labelling, showing The displacement ellipsoids are drawn at the 50% probability level. The intramolecular C—H $\cdots$  $\pi$  interactions are shown as a dashed lines (see Table 1 for details; symmetry code: (i)  $-x+1, y, -z+1/2$ ).



**Figure 2**

A partial crystal packing diagram of title compound. The C—H...O interactions are shown as dashed lines (see Table 1 for details).

### 1,8-Bis(4-fluorobenzoyl)naphthalen-2,7-diyl dimethanesulfonate

#### Crystal data

$C_{26}H_{18}F_2O_8S_2$

$M_r = 560.52$

Monoclinic,  $C2/c$

Hall symbol:  $-C\ 2yc$

$a = 7.376\ (3)\ \text{\AA}$

$b = 16.468\ (7)\ \text{\AA}$

$c = 20.075\ (9)\ \text{\AA}$

$\beta = 96.123\ (6)^\circ$

$V = 2424.4\ (19)\ \text{\AA}^3$

$Z = 4$

$F(000) = 1152$

$D_x = 1.536\ \text{Mg m}^{-3}$

Mo  $K\alpha$  radiation,  $\lambda = 0.71070\ \text{\AA}$

Cell parameters from 2840 reflections

$\theta = 2.7\text{--}31.5^\circ$

$\mu = 0.29\ \text{mm}^{-1}$

$T = 173\ \text{K}$

Block, colorless

$0.10 \times 0.10 \times 0.05\ \text{mm}$

#### Data collection

Rigaku Saturn70

diffractometer

Radiation source: rotating anode

Graphite monochromator

Detector resolution:  $7.314\ \text{pixels mm}^{-1}$

$\omega$  scans

Absorption correction: numerical

(*NUMABS*; Higashi, 1999)

$T_{\min} = 0.945$ ,  $T_{\max} = 0.945$

8755 measured reflections

2360 independent reflections

1617 reflections with  $I > 2\sigma(I)$

$R_{\text{int}} = 0.074$

$\theta_{\max} = 26.0^\circ$ ,  $\theta_{\min} = 3.0^\circ$

$h = -9 \rightarrow 9$

$k = -20 \rightarrow 16$

$l = -17 \rightarrow 24$

## Refinement

Refinement on  $F^2$   
 Least-squares matrix: full  
 $R[F^2 > 2\sigma(F^2)] = 0.053$   
 $wR(F^2) = 0.120$   
 $S = 1.03$   
 2360 reflections  
 173 parameters  
 0 restraints  
 Primary atom site location: structure-invariant  
 direct methods

Secondary atom site location: difference Fourier  
 map  
 Hydrogen site location: inferred from  
 neighbouring sites  
 H-atom parameters constrained  
 $w = 1/[\sigma^2(F_o^2) + (0.0523P)^2 + 1.1088P]$   
 where  $P = (F_o^2 + 2F_c^2)/3$   
 $(\Delta/\sigma)_{\max} < 0.001$   
 $\Delta\rho_{\max} = 0.29 \text{ e } \text{\AA}^{-3}$   
 $\Delta\rho_{\min} = -0.33 \text{ e } \text{\AA}^{-3}$

## Special details

**Experimental.** Spectroscopic data for the title compound:

$^1\text{H}$  NMR  $\delta$  (500 MHz, DMSO- $d_6$ , 373 K): 3.05(6H, s), 7.16(4H, dd,  $J_{\text{H-H}} = 8.6$  Hz,  $J_{\text{H-F}} = 8.6$  Hz, Ar), 7.58(4H, dd,  $J_{\text{H-H}} = 8.6$  Hz,  $J_{\text{H-F}} = 5.7$  Hz, Ar), 7.78(2H, d,  $J = 9.2$  Hz) 8.41(2H, d,  $J = 9.2$  Hz) p.p.m.

$^{13}\text{C}$  NMR  $\delta$  (125 MHz, DMSO- $d_6$ , 373 K): 38.27, 114.98(d,  $^2J_{\text{C-F}} = 22.7$  Hz), 120.49 127.19, 127.87, 130.29, 131.66(d,  $^3J_{\text{C-F}} = 9.5$  Hz), 132.46, 133.68(d,  $^4J_{\text{C-F}} = 2.3$  Hz), 145.61, 164.88(d,  $^1J_{\text{C-F}} = 253.1$  Hz), 191.08 p.p.m.

IR (KBr): 1673 (C=O), 1594, 1505 (Ar, naphthalene), 1354, 1169 ( $-\text{SO}_2-$ )  $\text{cm}^{-1}$ .

HRMS ( $m/z$ ):  $[M + \text{H}]^+$  calcd for  $\text{C}_{26}\text{H}_{19}\text{F}_2\text{O}_8\text{S}_2$ , 561.0489 found, 561.0459

**Geometry.** All e.s.d.'s (except the e.s.d. in the dihedral angle between two l.s. planes) are estimated using the full covariance matrix. The cell e.s.d.'s are taken into account individually in the estimation of e.s.d.'s in distances, angles and torsion angles; correlations between e.s.d.'s in cell parameters are only used when they are defined by crystal symmetry. An approximate (isotropic) treatment of cell e.s.d.'s is used for estimating e.s.d.'s involving l.s. planes.

**Refinement.** Refinement of  $F^2$  against ALL reflections. The weighted  $R$ -factor  $wR$  and goodness of fit  $S$  are based on  $F^2$ , conventional  $R$ -factors  $R$  are based on  $F$ , with  $F$  set to zero for negative  $F^2$ . The threshold expression of  $F^2 > \sigma(F^2)$  is used only for calculating  $R$ -factors(gt) *etc.* and is not relevant to the choice of reflections for refinement.  $R$ -factors based on  $F^2$  are statistically about twice as large as those based on  $F$ , and  $R$ -factors based on ALL data will be even larger.

Fractional atomic coordinates and isotropic or equivalent isotropic displacement parameters ( $\text{\AA}^2$ )

	$x$	$y$	$z$	$U_{\text{iso}}^*/U_{\text{eq}}$
S1	-0.00621 (10)	1.00592 (5)	0.39209 (3)	0.0260 (2)
F1	0.5336 (3)	0.76896 (12)	0.54084 (9)	0.0563 (6)
O1	0.2861 (3)	0.85653 (12)	0.23844 (9)	0.0294 (5)
O2	0.0714 (2)	0.99090 (12)	0.32145 (9)	0.0256 (5)
O3	-0.1713 (3)	1.05050 (13)	0.38002 (10)	0.0373 (6)
O4	0.1377 (3)	1.03864 (14)	0.43763 (10)	0.0374 (6)
C1	0.3544 (4)	0.99010 (16)	0.27833 (12)	0.0195 (6)
C2	0.2189 (4)	1.03558 (17)	0.30114 (12)	0.0223 (6)
C3	0.2174 (4)	1.12042 (17)	0.30137 (13)	0.0270 (7)
H3	0.1209	1.1497	0.3181	0.032*
C4	0.3583 (4)	1.15977 (17)	0.27698 (13)	0.0270 (7)
H4	0.3617	1.2174	0.2781	0.032*
C5	0.5000	1.1169 (2)	0.2500	0.0226 (9)
C6	0.5000	1.0305 (2)	0.2500	0.0195 (8)
C7	0.3417 (4)	0.89907 (17)	0.28618 (13)	0.0219 (6)
C8	0.3937 (4)	0.86527 (16)	0.35419 (13)	0.0213 (6)
C9	0.3690 (4)	0.78286 (17)	0.36579 (14)	0.0304 (7)
H9	0.3199	0.7488	0.3301	0.036*
C10	0.4155 (5)	0.75000 (19)	0.42896 (15)	0.0388 (8)

H10	0.3986	0.6938	0.4372	0.047*
C11	0.4865 (4)	0.8008 (2)	0.47904 (15)	0.0351 (8)
C12	0.5127 (4)	0.88178 (19)	0.46988 (14)	0.0299 (7)
H12	0.5618	0.9151	0.5060	0.036*
C13	0.4663 (4)	0.91447 (17)	0.40671 (13)	0.0247 (6)
H13	0.4841	0.9707	0.3993	0.030*
C14	-0.0504 (4)	0.90554 (19)	0.41094 (15)	0.0326 (7)
H14A	0.0650	0.8761	0.4204	0.039*
H14B	-0.1230	0.8803	0.3727	0.039*
H14C	-0.1182	0.9034	0.4503	0.039*

*Atomic displacement parameters (Å<sup>2</sup>)*

	$U^{11}$	$U^{22}$	$U^{33}$	$U^{12}$	$U^{13}$	$U^{23}$
S1	0.0244 (4)	0.0338 (4)	0.0201 (4)	-0.0002 (3)	0.0045 (3)	-0.0043 (3)
F1	0.0860 (17)	0.0496 (13)	0.0301 (11)	-0.0009 (11)	-0.0096 (10)	0.0191 (9)
O1	0.0402 (13)	0.0252 (11)	0.0221 (11)	-0.0055 (9)	0.0005 (9)	-0.0037 (9)
O2	0.0245 (11)	0.0340 (12)	0.0192 (10)	-0.0037 (9)	0.0057 (8)	-0.0036 (8)
O3	0.0278 (12)	0.0429 (14)	0.0423 (13)	0.0088 (10)	0.0089 (10)	-0.0026 (10)
O4	0.0337 (13)	0.0553 (15)	0.0230 (11)	-0.0083 (11)	0.0018 (9)	-0.0107 (10)
C1	0.0243 (14)	0.0216 (14)	0.0119 (13)	-0.0008 (12)	-0.0008 (10)	-0.0005 (10)
C2	0.0225 (15)	0.0302 (16)	0.0147 (14)	0.0001 (12)	0.0039 (11)	0.0012 (11)
C3	0.0312 (17)	0.0274 (16)	0.0225 (15)	0.0098 (13)	0.0027 (12)	-0.0010 (12)
C4	0.0344 (17)	0.0197 (15)	0.0256 (16)	0.0048 (13)	-0.0027 (13)	0.0013 (12)
C5	0.029 (2)	0.019 (2)	0.018 (2)	0.000	-0.0023 (16)	0.000
C6	0.023 (2)	0.019 (2)	0.0150 (19)	0.000	-0.0042 (15)	0.000
C7	0.0201 (15)	0.0236 (15)	0.0227 (15)	-0.0013 (12)	0.0054 (11)	-0.0005 (12)
C8	0.0215 (15)	0.0227 (15)	0.0204 (14)	-0.0007 (12)	0.0052 (11)	-0.0015 (11)
C9	0.0402 (19)	0.0229 (16)	0.0277 (17)	-0.0020 (14)	0.0019 (14)	-0.0018 (12)
C10	0.058 (2)	0.0225 (17)	0.0354 (19)	0.0004 (16)	0.0031 (16)	0.0061 (14)
C11	0.040 (2)	0.040 (2)	0.0248 (17)	0.0024 (15)	0.0031 (14)	0.0109 (14)
C12	0.0302 (17)	0.0371 (19)	0.0215 (15)	-0.0033 (14)	-0.0021 (12)	-0.0007 (13)
C13	0.0252 (16)	0.0214 (15)	0.0271 (16)	-0.0017 (12)	0.0014 (12)	0.0023 (12)
C14	0.0346 (18)	0.0398 (19)	0.0246 (16)	0.0004 (14)	0.0076 (13)	0.0011 (13)

*Geometric parameters (Å, °)*

S1—O3	1.421 (2)	C5—C6	1.422 (5)
S1—O4	1.430 (2)	C6—C1 <sup>i</sup>	1.432 (3)
S1—O2	1.6040 (19)	C7—C8	1.486 (4)
S1—C14	1.735 (3)	C8—C13	1.391 (4)
F1—C11	1.357 (3)	C8—C9	1.392 (4)
O1—C7	1.222 (3)	C9—C10	1.388 (4)
O2—C2	1.409 (3)	C9—H9	0.9500
C1—C2	1.366 (4)	C10—C11	1.368 (4)
C1—C6	1.432 (3)	C10—H10	0.9500
C1—C7	1.511 (4)	C11—C12	1.363 (4)
C2—C3	1.397 (4)	C12—C13	1.387 (4)

C3—C4	1.359 (4)	C12—H12	0.9500
C3—H3	0.9500	C13—H13	0.9500
C4—C5	1.416 (3)	C14—H14A	0.9800
C4—H4	0.9500	C14—H14B	0.9800
C5—C4 <sup>i</sup>	1.416 (3)	C14—H14C	0.9800
O3—S1—O4	118.60 (14)	O1—C7—C1	120.4 (2)
O3—S1—O2	108.01 (12)	C8—C7—C1	117.0 (2)
O4—S1—O2	108.22 (12)	C13—C8—C9	119.2 (2)
O3—S1—C14	110.61 (15)	C13—C8—C7	121.3 (2)
O4—S1—C14	111.33 (14)	C9—C8—C7	119.5 (2)
O2—S1—C14	97.98 (12)	C10—C9—C8	120.6 (3)
C2—O2—S1	122.32 (16)	C10—C9—H9	119.7
C2—C1—C6	119.0 (3)	C8—C9—H9	119.7
C2—C1—C7	116.9 (2)	C11—C10—C9	118.1 (3)
C6—C1—C7	124.1 (2)	C11—C10—H10	120.9
C1—C2—C3	123.8 (3)	C9—C10—H10	120.9
C1—C2—O2	115.2 (2)	F1—C11—C12	118.3 (3)
C3—C2—O2	121.0 (2)	F1—C11—C10	118.5 (3)
C4—C3—C2	118.0 (3)	C12—C11—C10	123.2 (3)
C4—C3—H3	121.0	C11—C12—C13	118.6 (3)
C2—C3—H3	121.0	C11—C12—H12	120.7
C3—C4—C5	121.6 (3)	C13—C12—H12	120.7
C3—C4—H4	119.2	C12—C13—C8	120.3 (3)
C5—C4—H4	119.2	C12—C13—H13	119.8
C4—C5—C4 <sup>i</sup>	120.2 (4)	C8—C13—H13	119.8
C4—C5—C6	119.90 (18)	S1—C14—H14A	109.5
C4 <sup>i</sup> —C5—C6	119.90 (18)	S1—C14—H14B	109.5
C5—C6—C1	117.70 (17)	H14A—C14—H14B	109.5
C5—C6—C1 <sup>i</sup>	117.70 (17)	S1—C14—H14C	109.5
C1—C6—C1 <sup>i</sup>	124.6 (3)	H14A—C14—H14C	109.5
O1—C7—C8	122.5 (2)	H14B—C14—H14C	109.5
O3—S1—O2—C2	103.7 (2)	C2—C1—C6—C1 <sup>i</sup>	-177.1 (3)
O4—S1—O2—C2	-25.9 (2)	C7—C1—C6—C1 <sup>i</sup>	4.16 (18)
C14—S1—O2—C2	-141.5 (2)	C2—C1—C7—O1	101.4 (3)
C6—C1—C2—C3	-3.0 (4)	C6—C1—C7—O1	-79.9 (3)
C7—C1—C2—C3	175.8 (2)	C2—C1—C7—C8	-76.7 (3)
C6—C1—C2—O2	173.41 (18)	C6—C1—C7—C8	102.0 (3)
C7—C1—C2—O2	-7.8 (3)	O1—C7—C8—C13	176.3 (3)
S1—O2—C2—C1	130.4 (2)	C1—C7—C8—C13	-5.6 (4)
S1—O2—C2—C3	-53.0 (3)	O1—C7—C8—C9	-3.9 (4)
C1—C2—C3—C4	0.5 (4)	C1—C7—C8—C9	174.2 (3)
O2—C2—C3—C4	-175.7 (2)	C13—C8—C9—C10	0.2 (4)
C2—C3—C4—C5	2.0 (4)	C7—C8—C9—C10	-179.6 (3)
C3—C4—C5—C4 <sup>i</sup>	178.0 (3)	C8—C9—C10—C11	-0.2 (5)
C3—C4—C5—C6	-2.0 (3)	C9—C10—C11—F1	-179.5 (3)
C4—C5—C6—C1	-0.47 (16)	C9—C10—C11—C12	0.3 (5)

C4 <sup>i</sup> —C5—C6—C1	179.53 (16)	F1—C11—C12—C13	179.5 (3)
C4—C5—C6—C1 <sup>i</sup>	179.53 (16)	C10—C11—C12—C13	-0.4 (5)
C4 <sup>i</sup> —C5—C6—C1 <sup>i</sup>	-0.47 (16)	C11—C12—C13—C8	0.3 (4)
C2—C1—C6—C5	2.9 (3)	C9—C8—C13—C12	-0.3 (4)
C7—C1—C6—C5	-175.84 (18)	C7—C8—C13—C12	179.6 (2)

Symmetry code: (i)  $-x+1, y, -z+1/2$ .

*Hydrogen-bond geometry (Å, °)*

C<sub>g</sub> is the centroid of the C8–C13 ring.

<i>D</i> —H $\cdots$ <i>A</i>	<i>D</i> —H	H $\cdots$ <i>A</i>	<i>D</i> $\cdots$ <i>A</i>	<i>D</i> —H $\cdots$ <i>A</i>
C14—H14 <i>A</i> $\cdots$ C <sub>g</sub>	0.98	2.87	3.805 (4)	160
C14—H14 <i>B</i> $\cdots$ O1 <sup>ii</sup>	0.98	2.45	3.399 (4)	163
C14—H14 <i>C</i> $\cdots$ O4 <sup>iii</sup>	0.98	2.46	3.304 (4)	144
C12—H12 $\cdots$ O4 <sup>iv</sup>	0.95	2.50	3.285 (4)	140
C4—H4 $\cdots$ O1 <sup>v</sup>	0.95	2.54	3.415 (4)	153

Symmetry codes: (ii)  $-x, y, -z+1/2$ ; (iii)  $-x, -y+2, -z+1$ ; (iv)  $-x+1, -y+2, -z+1$ ; (v)  $-x+1/2, y+1/2, -z+1/2$ .