

Acta Crystallographica Section E

Structure Reports

Online

ISSN 1600-5368

5-Chloro-2-(4-methoxyphenyl)-1,3-benzothiazole

Sammer Yousuf,* Shazia Shah, Nida Ambreen, Khalid M. Khan and Shakil Ahmad

H.E.J. Research Institute of Chemistry, International Center for Chemical and Biological Sciences, University of Karachi, Karachi 75270, Pakistan
Correspondence e-mail: dr.sammer.yousuf@gmail.com

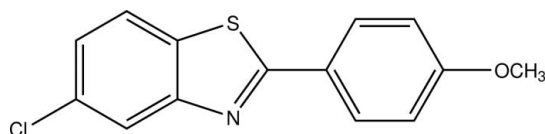
Received 12 January 2013; accepted 19 January 2013

Key indicators: single-crystal X-ray study; $T = 273$ K; mean $\sigma(\text{C}-\text{C}) = 0.006$ Å; R factor = 0.076; wR factor = 0.208; data-to-parameter ratio = 14.0.

In the title compound, $\text{C}_{14}\text{H}_{10}\text{ClNOS}$, the dihedral angle between the benzothiazole ring system and the methoxy-substituted benzene ring is 8.76 (16)°. In the crystal, molecules are stacked in columns along the c axis and no significant intermolecular interactions are observed.

Related literature

For the biological activity of benzothiazole compounds, see: Chohan *et al.* (2003); Khan *et al.* (2011); Hutchinson *et al.* (2002); Burger & Sawhney (1968); Palmer *et al.* (1971). For related structures, see: Yousuf *et al.* (2012a,b).



Experimental

Crystal data

$\text{C}_{14}\text{H}_{10}\text{ClNOS}$
 $M_r = 275.74$
Orthorhombic, $Pbcn$
 $a = 29.0274$ (16) Å

$b = 14.5512$ (8) Å
 $c = 5.8686$ (3) Å
 $V = 2478.8$ (2) Å³
 $Z = 8$

Mo $K\alpha$ radiation
 $\mu = 0.46$ mm⁻¹

$T = 273$ K
 $0.37 \times 0.22 \times 0.10$ mm

Data collection

Bruker SMART APEX CCD area-detector diffractometer
Absorption correction: multi-scan (SADABS; Bruker, 2000)
 $T_{\min} = 0.848$, $T_{\max} = 0.955$

13397 measured reflections
2299 independent reflections
1965 reflections with $I > 2\sigma(I)$
 $R_{\text{int}} = 0.052$

Refinement

$R[F^2 > 2\sigma(F^2)] = 0.076$
 $wR(F^2) = 0.208$
 $S = 1.15$
2299 reflections

164 parameters
H-atom parameters constrained
 $\Delta\rho_{\text{max}} = 0.63$ e Å⁻³
 $\Delta\rho_{\text{min}} = -0.37$ e Å⁻³

Data collection: SMART (Bruker, 2000); cell refinement: SAINT (Bruker, 2000); data reduction: SAINT; program(s) used to solve structure: SHELXS97 (Sheldrick, 2008); program(s) used to refine structure: SHELXL97 (Sheldrick, 2008); molecular graphics: SHELXTL (Sheldrick, 2008); software used to prepare material for publication: SHELXTL, PARST (Nardelli, 1996) and PLATON (Spek, 2009).

The authors are thankful to the OPCW, Netherland, and the Higher Education Commission (HEC) Pakistan (project No. 1910) for their financial support.

Supplementary data and figures for this paper are available from the IUCr electronic archives (Reference: IS5237).

References

- Bruker (2000). SADABS, SMART and SAINT. Bruker AXS Inc., Madison, Wisconsin, USA.
- Burger, A. & Sawhney, S. N. (1968). *J. Med. Chem.* **11**, 270–273.
- Chohan, Z. H., Pervez, H., Scozzafava, A. & Supuran, C. T. (2003). *J. Chem. Soc. Pak.* **25**, 308–313.
- Hutchinson, I., Jennings, S. A., Vishnuvajjala, B. R., Wetsell, A. D. & Stevens, M. F. G. (2002). *J. Med. Chem.* **45**, 744–747.
- Khan, K. M., Rahim, F., Halim, S. A., Taha, M., Khan, M., Perveen, S., Zaheer-ul-Haq, Mesaik, M. A. & Choudhary, M. I., (2011). *Bioorg. Med. Chem.* **19**, 4286–4294.
- Nardelli, M. (1996). *J. Appl. Cryst.* **29**, 296–300.
- Palmer, P. J., Trigg, R. B. & Warrington, J. V. (1971). *J. Med. Chem.* **14**, 248–251.
- Sheldrick, G. M. (2008). *Acta Cryst.* **A64**, 112–122.
- Spek, A. L. (2009). *Acta Cryst.* **D65**, 148–155.
- Yousuf, S., Shah, S., Ambreen, N., Khan, K. M. & Ahmad, S. (2012a). *Acta Cryst.* **E68**, o2877.
- Yousuf, S., Shah, S., Ambreen, N., Khan, K. M. & Ahmad, S. (2012b). *Acta Cryst.* **E68**, o3057.

supporting information

Acta Cryst. (2013). E69, o360 [doi:10.1107/S1600536813001955]

5-Chloro-2-(4-methoxyphenyl)-1,3-benzothiazole

Sammer Yousuf, Shazia Shah, Nida Ambreen, Khalid M. Khan and Shakil Ahmad

S1. Comment

Benzothiazole is a well known class of organic compounds with a diverse range of biological activities (Khan *et al.*, 2011; Chohan *et al.*, 2003, Hutchinson *et al.*, 2002; Burger & Sawhney, 1968; Palmer *et al.*, 1971). The title compound is a methoxy phenyl derivative of benzothiazole synthesized as a part of our ongoing project to synthesize bioactive heterocyclic compounds.

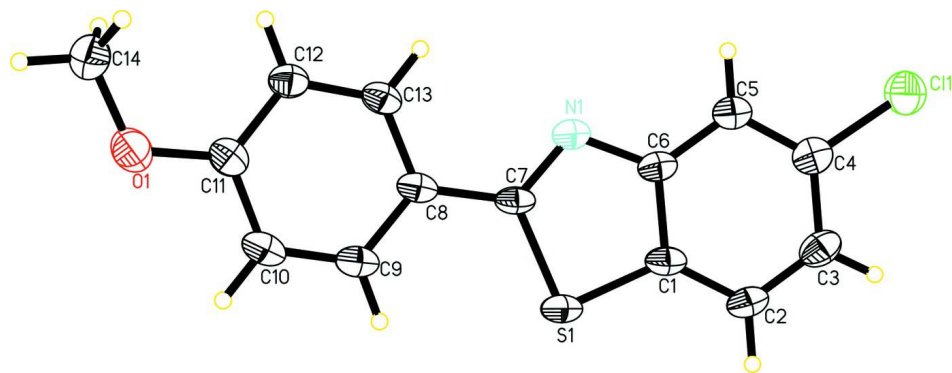
The crystal structure of title compound (Fig. 1), C₁₆H₁₄ClNOS, is similar to that our previously published 5-chloro-2-(3,4,5-trimethoxyphenyl)-1,3-benzothiazole (Yousuf *et al.*, 2012*b*) with the difference that the 3,4,5-trimethoxyphenyl ring is replaced by the 4-methoxyphenyl phenyl ring. The dihedral angle between planner benzothiazole (S1/N1/C1–C7) and methoxy phenyl rings (C8–C13) is 8.76 (16)°. The bond lengths and angle are similar as in previously published benzothiazole compounds (Yousuf *et al.*, 2012*a,b*). In the crystal structure the molecules having plane of mirror are arranged in a two-dimensional manner along *a* and *c* axes (Fig. 2).

S2. Experimental

A mixture of 2-amino-4-chlorobenzenethiol (0.159 g, 1 mmol), 4-methoxybenzaldehyde (0.136 g, 1 mmol), sodium metabisulfite (0.2 g) and *N,N*-dimethylformamide (10 ml) was refluxed for 2 hrs in a round-bottomed flask. The completion of reaction was monitored by TLC and cool to room temperature followed by addition of cold water to obtain white precipitates. Crystallization from ethanol afforded pure crystal of 5-chloro-2-(4-methoxyphenyl) benzothiazole (yield 0.223 g, 81.1%) found suitable for X-ray diffraction studies.

S3. Refinement

H atoms of phenyl and methyl groups were positioned geometrically with C—H = 0.93 and 0.96 Å, respectively, and constrained to ride on their parent atoms with $U_{\text{iso}}(\text{H}) = 1.2U_{\text{eq}}(\text{C}_{\text{phenyl}})$ and $1.5U_{\text{eq}}(\text{C}_{\text{methyl}})$. A rotating group model was applied to the methyl group.

**Figure 1**

The molecular structure of title compound with displacement ellipsoids drawn at 30% probability level.

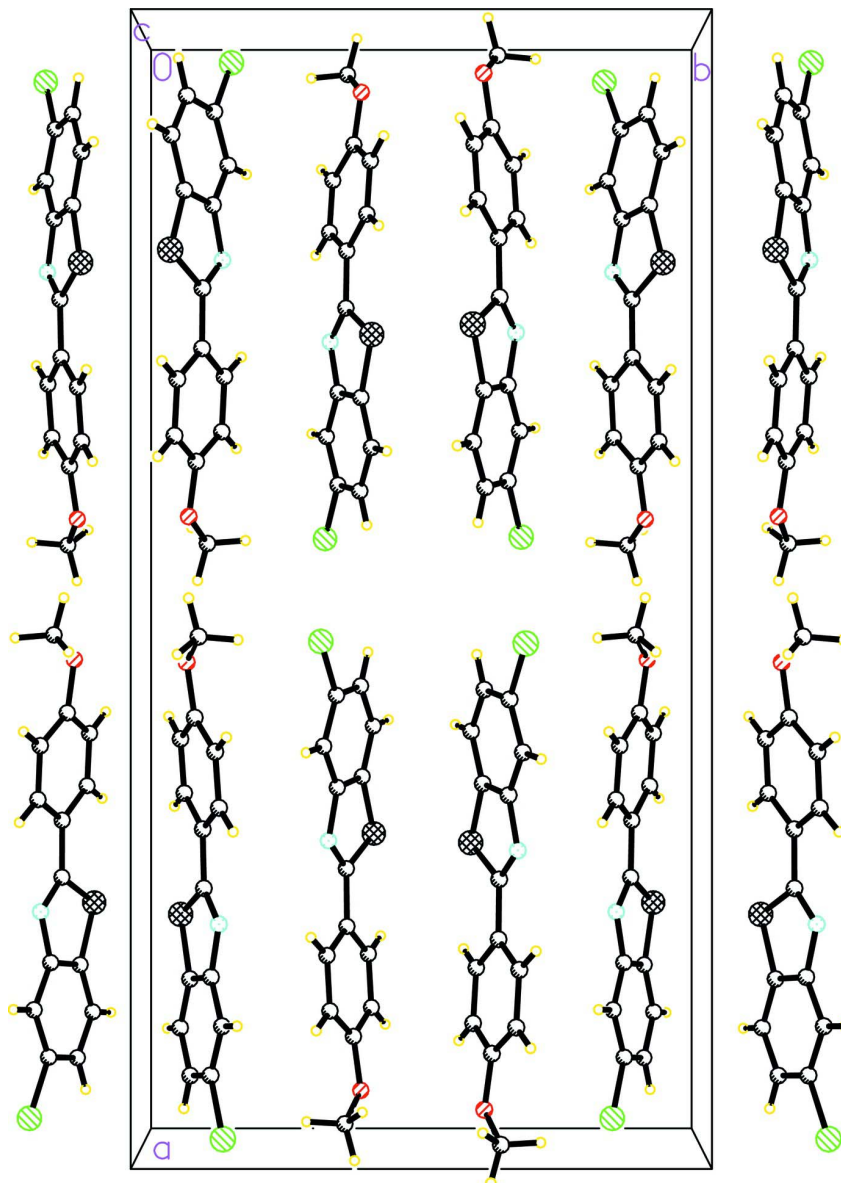


Figure 2

A crystal packing diagram of the title compound, viewed along the *c* axis.

5-Chloro-2-(4-methoxyphenyl)-1,3-benzothiazole

Crystal data

$C_{14}H_{10}ClNOS$

$M_r = 275.74$

Orthorhombic, *Pbcn*

Hall symbol: $-P\ 2n\ 2ab$

$a = 29.0274\ (16)\ \text{\AA}$

$b = 14.5512\ (8)\ \text{\AA}$

$c = 5.8686\ (3)\ \text{\AA}$

$V = 2478.8\ (2)\ \text{\AA}^3$

$Z = 8$

$F(000) = 1136$

$D_x = 1.478\ \text{Mg m}^{-3}$

Mo $K\alpha$ radiation, $\lambda = 0.71073\ \text{\AA}$

Cell parameters from 3307 reflections

$\theta = 2.5\text{--}26.3^\circ$

$\mu = 0.46\ \text{mm}^{-1}$

$T = 273\ \text{K}$

Block, colorless

$0.37 \times 0.22 \times 0.10\ \text{mm}$

Data collection

Bruker SMART APEX CCD area-detector
diffractometer
Radiation source: fine-focus sealed tube
Graphite monochromator
 ω scan
Absorption correction: multi-scan
(SADABS; Bruker, 2000)
 $T_{\min} = 0.848$, $T_{\max} = 0.955$

13397 measured reflections
2299 independent reflections
1965 reflections with $I > 2\sigma(I)$
 $R_{\text{int}} = 0.052$
 $\theta_{\max} = 25.5^\circ$, $\theta_{\min} = 1.6^\circ$
 $h = -34 \rightarrow 34$
 $k = -17 \rightarrow 17$
 $l = -6 \rightarrow 7$

Refinement

Refinement on F^2
Least-squares matrix: full
 $R[F^2 > 2\sigma(F^2)] = 0.076$
 $wR(F^2) = 0.208$
 $S = 1.15$
2299 reflections
164 parameters
0 restraints
Primary atom site location: structure-invariant
direct methods

Secondary atom site location: difference Fourier
map
Hydrogen site location: inferred from
neighbouring sites
H-atom parameters constrained
 $w = 1/[\sigma^2(F_o^2) + (0.0983P)^2 + 3.3682P]$
where $P = (F_o^2 + 2F_c^2)/3$
 $(\Delta/\sigma)_{\max} < 0.001$
 $\Delta\rho_{\max} = 0.63 \text{ e } \text{\AA}^{-3}$
 $\Delta\rho_{\min} = -0.37 \text{ e } \text{\AA}^{-3}$

Special details

Geometry. All e.s.d.'s (except the e.s.d. in the dihedral angle between two l.s. planes) are estimated using the full covariance matrix. The cell e.s.d.'s are taken into account individually in the estimation of e.s.d.'s in distances, angles and torsion angles; correlations between e.s.d.'s in cell parameters are only used when they are defined by crystal symmetry. An approximate (isotropic) treatment of cell e.s.d.'s is used for estimating e.s.d.'s involving l.s. planes.

Refinement. Refinement of F^2 against ALL reflections. The weighted R -factor wR and goodness of fit S are based on F^2 , conventional R -factors R are based on F , with F set to zero for negative F^2 . The threshold expression of $F^2 > \sigma(F^2)$ is used only for calculating R -factors(gt) etc. and is not relevant to the choice of reflections for refinement. R -factors based on F^2 are statistically about twice as large as those based on F , and R -factors based on ALL data will be even larger.

Fractional atomic coordinates and isotropic or equivalent isotropic displacement parameters (\AA^2)

| | x | y | z | $U_{\text{iso}}^*/U_{\text{eq}}$ |
|-----|--------------|--------------|--------------|----------------------------------|
| Cl1 | 0.04504 (4) | 0.17240 (11) | -0.0360 (2) | 0.0787 (5) |
| S1 | 0.21904 (4) | 0.08514 (7) | 0.52664 (16) | 0.0494 (4) |
| O1 | 0.43838 (11) | 0.1057 (2) | 0.1916 (6) | 0.0656 (9) |
| N1 | 0.21907 (12) | 0.1613 (2) | 0.1301 (5) | 0.0437 (8) |
| C1 | 0.16642 (15) | 0.1048 (2) | 0.4009 (6) | 0.0450 (9) |
| C2 | 0.12234 (17) | 0.0857 (3) | 0.4807 (7) | 0.0502 (10) |
| H2A | 0.1179 | 0.0592 | 0.6231 | 0.060* |
| C3 | 0.08560 (16) | 0.1072 (3) | 0.3433 (7) | 0.0556 (11) |
| H3A | 0.0558 | 0.0946 | 0.3927 | 0.067* |
| C4 | 0.09246 (15) | 0.1475 (3) | 0.1304 (8) | 0.0530 (10) |
| C5 | 0.13595 (15) | 0.1688 (3) | 0.0488 (7) | 0.0471 (9) |
| H5A | 0.1400 | 0.1968 | -0.0922 | 0.057* |
| C6 | 0.17346 (14) | 0.1466 (2) | 0.1872 (6) | 0.0420 (9) |
| C7 | 0.24620 (14) | 0.1318 (2) | 0.2888 (6) | 0.0409 (9) |
| C8 | 0.29667 (14) | 0.1305 (2) | 0.2692 (6) | 0.0420 (9) |
| C9 | 0.32493 (16) | 0.0941 (3) | 0.4380 (7) | 0.0511 (10) |

| | | | | |
|------|--------------|------------|-------------|-------------|
| H9A | 0.3118 | 0.0730 | 0.5727 | 0.061* |
| C10 | 0.37175 (16) | 0.0885 (3) | 0.4104 (7) | 0.0535 (11) |
| H10A | 0.3901 | 0.0646 | 0.5261 | 0.064* |
| C11 | 0.39169 (15) | 0.1187 (3) | 0.2077 (7) | 0.0487 (10) |
| C12 | 0.36468 (15) | 0.1576 (3) | 0.0376 (7) | 0.0479 (9) |
| H12A | 0.3780 | 0.1795 | -0.0959 | 0.057* |
| C13 | 0.31762 (15) | 0.1631 (2) | 0.0709 (7) | 0.0461 (9) |
| H13A | 0.2994 | 0.1893 | -0.0421 | 0.055* |
| C14 | 0.46063 (17) | 0.1316 (4) | -0.0114 (9) | 0.0717 (14) |
| H14A | 0.4926 | 0.1149 | -0.0032 | 0.108* |
| H14B | 0.4580 | 0.1969 | -0.0316 | 0.108* |
| H14C | 0.4465 | 0.1007 | -0.1379 | 0.108* |

Atomic displacement parameters (Å²)

| | U^{11} | U^{22} | U^{33} | U^{12} | U^{13} | U^{23} |
|-----|-------------|-------------|-------------|--------------|--------------|--------------|
| C11 | 0.0538 (7) | 0.1036 (11) | 0.0787 (9) | 0.0116 (7) | 0.0019 (6) | 0.0106 (7) |
| S1 | 0.0692 (7) | 0.0454 (6) | 0.0336 (5) | -0.0036 (5) | 0.0005 (4) | 0.0084 (4) |
| O1 | 0.0598 (19) | 0.072 (2) | 0.065 (2) | 0.0054 (15) | -0.0097 (16) | 0.0031 (16) |
| N1 | 0.058 (2) | 0.0384 (16) | 0.0347 (16) | -0.0028 (14) | 0.0022 (15) | 0.0019 (13) |
| C1 | 0.069 (3) | 0.0347 (18) | 0.0308 (18) | -0.0014 (17) | 0.0019 (18) | 0.0005 (14) |
| C2 | 0.068 (3) | 0.044 (2) | 0.039 (2) | -0.0038 (19) | 0.0129 (19) | 0.0029 (16) |
| C3 | 0.066 (3) | 0.051 (2) | 0.050 (2) | -0.004 (2) | 0.020 (2) | -0.0059 (19) |
| C4 | 0.061 (3) | 0.046 (2) | 0.052 (2) | 0.0044 (18) | 0.007 (2) | -0.0042 (18) |
| C5 | 0.061 (2) | 0.0386 (19) | 0.042 (2) | 0.0006 (17) | 0.0043 (19) | -0.0007 (16) |
| C6 | 0.061 (2) | 0.0313 (16) | 0.0334 (18) | -0.0018 (16) | 0.0071 (17) | -0.0023 (14) |
| C7 | 0.064 (2) | 0.0315 (17) | 0.0269 (17) | -0.0024 (16) | 0.0010 (17) | -0.0002 (14) |
| C8 | 0.065 (2) | 0.0298 (16) | 0.0314 (18) | -0.0007 (15) | -0.0052 (17) | -0.0006 (14) |
| C9 | 0.072 (3) | 0.045 (2) | 0.036 (2) | -0.0032 (19) | -0.0038 (19) | 0.0056 (16) |
| C10 | 0.071 (3) | 0.047 (2) | 0.043 (2) | 0.0017 (19) | -0.016 (2) | 0.0052 (17) |
| C11 | 0.056 (2) | 0.043 (2) | 0.047 (2) | 0.0021 (17) | -0.0078 (19) | -0.0040 (17) |
| C12 | 0.059 (2) | 0.042 (2) | 0.043 (2) | -0.0012 (18) | -0.0009 (18) | 0.0047 (16) |
| C13 | 0.061 (2) | 0.0376 (19) | 0.040 (2) | 0.0003 (17) | -0.0088 (18) | 0.0040 (15) |
| C14 | 0.055 (3) | 0.092 (4) | 0.068 (3) | -0.007 (3) | 0.001 (2) | 0.004 (3) |

Geometric parameters (Å, °)

| | | | |
|--------|-----------|----------|-----------|
| C11—C4 | 1.726 (5) | C5—H5A | 0.9300 |
| S1—C1 | 1.720 (4) | C7—C8 | 1.470 (6) |
| S1—C7 | 1.741 (4) | C8—C9 | 1.391 (5) |
| O1—C11 | 1.372 (5) | C8—C13 | 1.396 (5) |
| O1—C14 | 1.407 (5) | C9—C10 | 1.371 (7) |
| N1—C7 | 1.293 (5) | C9—H9A | 0.9300 |
| N1—C6 | 1.382 (5) | C10—C11 | 1.394 (6) |
| C1—C2 | 1.391 (6) | C10—H10A | 0.9300 |
| C1—C6 | 1.409 (5) | C11—C12 | 1.390 (5) |
| C2—C3 | 1.373 (7) | C12—C13 | 1.382 (6) |
| C2—H2A | 0.9300 | C12—H12A | 0.9300 |

| | | | |
|--------------|------------|-----------------|------------|
| C3—C4 | 1.394 (6) | C13—H13A | 0.9300 |
| C3—H3A | 0.9300 | C14—H14A | 0.9600 |
| C4—C5 | 1.386 (6) | C14—H14B | 0.9600 |
| C5—C6 | 1.396 (6) | C14—H14C | 0.9600 |
| C1—S1—C7 | 89.62 (18) | C9—C8—C13 | 117.8 (4) |
| C11—O1—C14 | 118.4 (4) | C9—C8—C7 | 122.5 (4) |
| C7—N1—C6 | 110.9 (3) | C13—C8—C7 | 119.7 (3) |
| C2—C1—C6 | 121.3 (4) | C10—C9—C8 | 121.5 (4) |
| C2—C1—S1 | 129.8 (3) | C10—C9—H9A | 119.2 |
| C6—C1—S1 | 109.0 (3) | C8—C9—H9A | 119.2 |
| C3—C2—C1 | 118.2 (4) | C9—C10—C11 | 119.6 (4) |
| C3—C2—H2A | 120.9 | C9—C10—H10A | 120.2 |
| C1—C2—H2A | 120.9 | C11—C10—H10A | 120.2 |
| C2—C3—C4 | 120.7 (4) | O1—C11—C12 | 124.4 (4) |
| C2—C3—H3A | 119.6 | O1—C11—C10 | 115.2 (4) |
| C4—C3—H3A | 119.6 | C12—C11—C10 | 120.5 (4) |
| C5—C4—C3 | 122.3 (4) | C13—C12—C11 | 118.7 (4) |
| C5—C4—C11 | 118.9 (3) | C13—C12—H12A | 120.7 |
| C3—C4—C11 | 118.8 (3) | C11—C12—H12A | 120.7 |
| C4—C5—C6 | 117.2 (4) | C12—C13—C8 | 121.9 (4) |
| C4—C5—H5A | 121.4 | C12—C13—H13A | 119.0 |
| C6—C5—H5A | 121.4 | C8—C13—H13A | 119.0 |
| N1—C6—C5 | 124.7 (3) | O1—C14—H14A | 109.5 |
| N1—C6—C1 | 114.9 (4) | O1—C14—H14B | 109.5 |
| C5—C6—C1 | 120.3 (4) | H14A—C14—H14B | 109.5 |
| N1—C7—C8 | 123.7 (3) | O1—C14—H14C | 109.5 |
| N1—C7—S1 | 115.5 (3) | H14A—C14—H14C | 109.5 |
| C8—C7—S1 | 120.6 (3) | H14B—C14—H14C | 109.5 |
| C7—S1—C1—C2 | 179.4 (4) | C1—S1—C7—N1 | 1.1 (3) |
| C7—S1—C1—C6 | -0.7 (3) | C1—S1—C7—C8 | -174.8 (3) |
| C6—C1—C2—C3 | 1.2 (6) | N1—C7—C8—C9 | -176.7 (3) |
| S1—C1—C2—C3 | -178.9 (3) | S1—C7—C8—C9 | -1.1 (5) |
| C1—C2—C3—C4 | -0.4 (6) | N1—C7—C8—C13 | 0.5 (5) |
| C2—C3—C4—C5 | -0.9 (6) | S1—C7—C8—C13 | 176.0 (3) |
| C2—C3—C4—C11 | 179.6 (3) | C13—C8—C9—C10 | -1.2 (6) |
| C3—C4—C5—C6 | 1.3 (6) | C7—C8—C9—C10 | 176.0 (4) |
| C11—C4—C5—C6 | -179.2 (3) | C8—C9—C10—C11 | -0.9 (6) |
| C7—N1—C6—C5 | -178.4 (3) | C14—O1—C11—C12 | -1.3 (6) |
| C7—N1—C6—C1 | 0.7 (4) | C14—O1—C11—C10 | 177.8 (4) |
| C4—C5—C6—N1 | 178.6 (3) | C9—C10—C11—O1 | -176.6 (4) |
| C4—C5—C6—C1 | -0.4 (5) | C9—C10—C11—C12 | 2.5 (6) |
| C2—C1—C6—N1 | -179.9 (3) | O1—C11—C12—C13 | 177.1 (4) |
| S1—C1—C6—N1 | 0.2 (4) | C10—C11—C12—C13 | -1.9 (6) |
| C2—C1—C6—C5 | -0.8 (5) | C11—C12—C13—C8 | -0.2 (6) |
| S1—C1—C6—C5 | 179.3 (3) | C9—C8—C13—C12 | 1.8 (5) |
| C6—N1—C7—C8 | 174.5 (3) | C7—C8—C13—C12 | -175.5 (3) |

C6—N1—C7—S1

−1.2 (4)
