

Acta Crystallographica Section E

Structure Reports

Online

ISSN 1600-5368

2-Amino-5-methylpyridinium trifluoroacetate

Kaliyaperumal Thanigaimani, Abbas Farhadikoutenaei, Nuridayanti Che Khalib, Suhana Arshad and Ibrahim Abdul Razak*‡

School of Physics, Universiti Sains Malaysia, 11800 USM, Penang, Malaysia

Correspondence e-mail: arazaki@usm.my

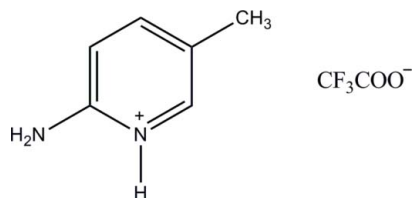
Received 22 October 2012; accepted 2 November 2012

Key indicators: single-crystal X-ray study; $T = 100$ K; mean $\sigma(\text{C}-\text{C}) = 0.002$ Å; disorder in main residue; R factor = 0.046; wR factor = 0.114; data-to-parameter ratio = 18.2.

In the title salt, $\text{C}_6\text{H}_9\text{N}_2^+\cdot\text{C}_2\text{F}_3\text{O}_2^-$, the F atoms of the anion are disordered over two sets of sites, with refined occupancies in a ratio of 0.505 (17):0.495 (17). In the crystal, cations and anions are linked *via* $\text{N}-\text{H}\cdots\text{O}$ hydrogen bonds, forming $R_2^2(8)$ ring motifs. The ionic units are linked into a two-dimensional network parallel to (100) by $\text{N}-\text{H}\cdots\text{O}$ and weak $\text{C}-\text{H}\cdots\text{O}$ hydrogen bonds. The crystal structure is further stabilized by weak $\text{C}-\text{H}\cdots\text{F}$ hydrogen bonds, resulting in a three-dimensional network.

Related literature

For background to the chemistry of substituted pyridines, see: Pozharski *et al.* (1997); Katritzky *et al.* (1996). For details of hydrogen bonding, see: Jeffrey & Saenger (1991); Jeffrey (1997); Scheiner (1997). For hydrogen-bond motifs, see: Bernstein *et al.* (1995). For standard bond-length data, see: Allen *et al.* (1987). For the stability of the temperature controller used for the data collection, see: Cosier & Glazer (1986). For a related structure, see: Rodrigues *et al.* (2001).



Experimental

Crystal data

 $\text{C}_6\text{H}_9\text{N}_2^+\cdot\text{C}_2\text{F}_3\text{O}_2^-$
 $M_r = 222.17$

 Orthorhombic, $Pna2_1$
 $a = 18.725$ (4) Å

 $b = 4.6256$ (10) Å

 $c = 11.319$ (2) Å

 $V = 980.4$ (3) Å³
 $Z = 4$

 Mo $K\alpha$ radiation

 $\mu = 0.15$ mm⁻¹
 $T = 100$ K

 $0.54 \times 0.29 \times 0.11$ mm

Data collection

Bruker SMART APEXII DUO

CCD area-detector

diffractometer

Absorption correction: multi-scan

(SADABS; Bruker, 2009)

 $T_{\min} = 0.926$, $T_{\max} = 0.985$

12012 measured reflections

3216 independent reflections

 2627 reflections with $I > 2\sigma(I)$
 $R_{\text{int}} = 0.041$

Refinement

 $R[F^2 > 2\sigma(F^2)] = 0.046$
 $wR(F^2) = 0.114$
 $S = 1.07$

3216 reflections

177 parameters

1 restraint

H atoms treated by a mixture of independent and constrained refinement

 $\Delta\rho_{\text{max}} = 0.23$ e Å⁻³
 $\Delta\rho_{\text{min}} = -0.30$ e Å⁻³

Absolute structure: Flack (1983),

1368 Friedel pairs

 Flack parameter: -0.1 (7)

Table 1

Hydrogen-bond geometry (Å, °).

$D-H\cdots A$	$D-H$	$H\cdots A$	$D\cdots A$	$D-H\cdots A$
$\text{N1}-\text{H1N1}\cdots\text{O2}$	0.98 (3)	1.75 (3)	2.7281 (19)	177 (2)
$\text{N2}-\text{H2N2}\cdots\text{O1}$	0.95 (3)	1.92 (3)	2.865 (2)	173 (2)
$\text{N2}-\text{H1N2}\cdots\text{O2}^i$	0.86 (3)	1.99 (3)	2.8347 (18)	167 (3)
$\text{C3}-\text{H3A}\cdots\text{F2}^{ii}$	0.95	2.51	3.429 (6)	164
$\text{C5}-\text{H5A}\cdots\text{O1}^{iii}$	0.95	2.27	3.1910 (19)	162

 Symmetry codes: (i) $-x + \frac{3}{2}, y + \frac{1}{2}, z + \frac{1}{2}$; (ii) $x + \frac{1}{2}, -y + \frac{3}{2}, z$; (iii) $-x + \frac{3}{2}, y + \frac{1}{2}, z - \frac{1}{2}$.

Data collection: APEX2 (Bruker, 2009); cell refinement: SAINT (Bruker, 2009); data reduction: SAINT; program(s) used to solve structure: SHELXTL (Sheldrick, 2008); program(s) used to refine structure: SHELXTL; molecular graphics: SHELXTL; software used to prepare material for publication: SHELXTL and PLATON (Spek, 2009).

The authors thank the Malaysian Government and Universiti Sains Malaysia (USM) for the research facilities and Fundamental Research Grant Scheme (FRGS) No. 203/PFIZIK/6711171 to conduct this work. KT thanks The Academy of Sciences for the Developing World and USM for a TWAS-USM fellowship.

Supplementary data and figures for this paper are available from the IUCr electronic archives (Reference: LH5549).

References

- Allen, F. H., Kennard, O., Watson, D. G., Brammer, L., Orpen, A. G. & Taylor, R. (1987). *J. Chem. Soc. Perkin Trans. 2*, pp. S1–19.
- Bernstein, J., Davis, R. E., Shimoni, L. & Chang, N.-L. (1995). *Angew. Chem. Int. Ed. Engl.* **34**, 1555–1573.
- Bruker (2009). SADABS, APEX2 and SAINT. Bruker AXS Inc., Madison, Wisconsin, USA.
- Cosier, J. & Glazer, A. M. (1986). *J. Appl. Cryst.* **19**, 105–107.
- Flack, H. D. (1983). *Acta Cryst.* **A39**, 876–881.
- Jeffrey, G. A. (1997). In *An Introduction of Hydrogen Bonding*. Oxford University Press.
- Jeffrey, G. A. & Saenger, W. (1991). In *Hydrogen Bonding in Biological Structures*. Berlin: Springer.
- Katritzky, A. R., Rees, C. W. & Scriven, E. F. V. (1996). In *Comprehensive Heterocyclic Chemistry II*. Oxford: Pergamon Press.

‡ Thomson Reuters ResearcherID: A-5599-2009.

- Pozharski, A. F., Soldatenkov, A. T. & Katritzky, A. R. (1997). In *Heterocycles in Life and Society*. New York: Wiley.
- Rodrigues, V. H., Paixão, J. A., Costa, M. M. R. R. & Matos Beja, A. (2001). *Acta Cryst.* **C57**, 417–420.
- Scheiner, S. (1997). In *Hydrogen Bonding: A Theoretical Perspective*. Oxford University Press.
- Sheldrick, G. M. (2008). *Acta Cryst.* **A64**, 112–122.
- Spek, A. L. (2009). *Acta Cryst.* **D65**, 148–155.

supporting information

Acta Cryst. (2012). E68, o3319–o3320 [doi:10.1107/S1600536812045291]

2-Amino-5-methylpyridinium trifluoroacetate

Kaliyaperumal Thanigaimani, Abbas Farhadikoutenaeei, Nuridayanti Che Khalib, Suhana Arshad and Ibrahim Abdul Razak

S1. Comment

Pyridine and its derivatives play an important role in heterocyclic chemistry (Pozharski *et al.*, 1997; Katritzky *et al.*, 1996). They are often involved in hydrogen-bond interactions (Jeffrey & Saenger, 1991; Jeffrey, 1997; Scheiner, 1997). Trifluoroacetic acid is a very strong carboxylic acid, easily volatile, and used for protein purification. An example of a crystal structure of a trifluoroacetate salts has been reported (Rodrigues *et al.*, 2001). In order to study potential hydrogen bonding interactions the crystal structure determination of the title compound (I) was carried out.

The asymmetric unit (Fig. 1) contains one 2-amino-5-methylpyridinium cation and one trifluoroacetate anion. The F atoms of the anion are disordered over two sets of sites, with occupancies of 0.505 (17) and 0.495 (17). In the 2-amino-5-methylpyridinium cation, a wider than normal angle [C1—N1—C5 = 122.77 (14)°] is subtended at the protonated N1 atom. The 2-amino-5-methylpyridinium cation is essentially planar, with a maximum deviation of 0.016 (2) Å for atom N2. The bond lengths (Allen *et al.*, 1987) and angles are normal.

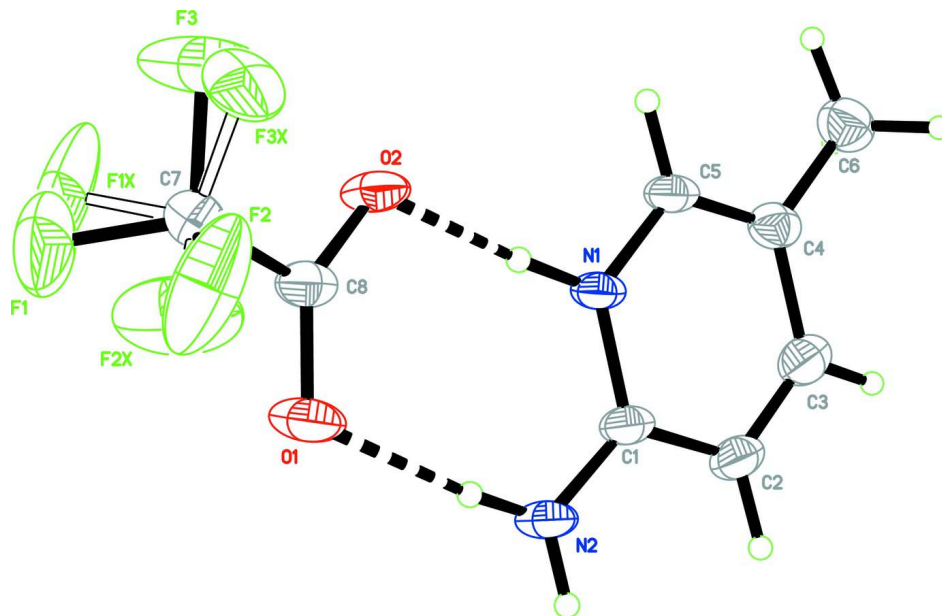
In the crystal (Fig. 2), the cations and anions are linked *via* N—H \cdots O hydrogen bonds to form $R_2^2(8)$ ring motifs (Bernstein *et al.*, 1995). The ionic units are linked into a two-dimensional network parallel to (100) by N2—H1N2 \cdots O2ⁱ and C5—H5A \cdots O1ⁱⁱⁱ hydrogen bonds (symmetry codes in Table 1). The crystal structure is further stabilized by C3—H3A \cdots F2ⁱⁱ hydrogen bonds, resulting in a three-dimensional network.

S2. Experimental

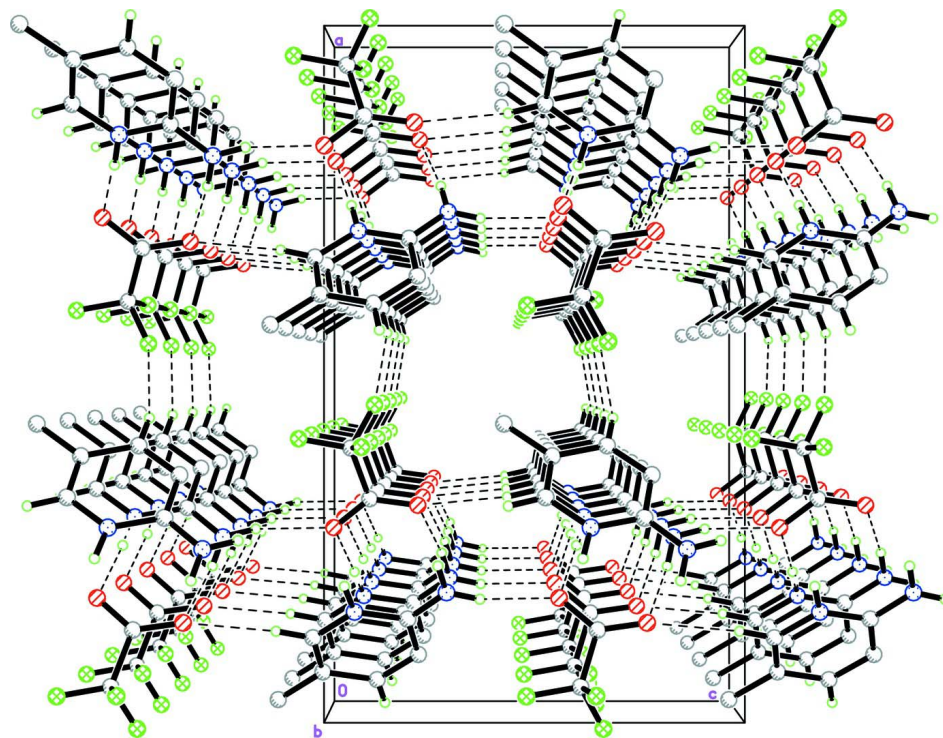
To a hot methanol solution (20 ml) of 2-amino-5-methylpyridine (54 mg, Aldrich) was added a few drops of trifluoroacetic acid. The solution was warmed over a heating magnetic stirrer hotplate for a few minutes. The resulting solution was allowed to cool slowly at room temperature and crystals of the title compound (I) appeared after a few days.

S3. Refinement

The F atoms of the anion are disordered over two sets of sites, with occupancies of 0.505 (17):0.495 (17). Atoms H1N1, H1N2 and H2N2 were located in a difference Fourier maps and refined freely. The remaining hydrogen atoms were positioned geometrically [C—H = 0.95–0.98 Å] and were refined using a riding model, with $U_{\text{iso}}(\text{H}) = 1.2 U_{\text{eq}}(\text{C})$ or $1.5 U_{\text{eq}}(\text{methyl C})$. A rotating group model was used for the methyl group.

**Figure 1**

The molecular structure of the title compound, showing 50% probability displacement ellipsoids and the atom-numbering scheme. Both disorder components are shown.

**Figure 2**

The crystal packing diagram of the title compound. Only major disorder component is shown. Hydrogen bonds are shown as dashed lines.

2-Amino-5-methylpyridinium trifluoroacetate

Crystal data

 $C_6H_9N_2^+ \cdot C_2F_3O_2^-$ $M_r = 222.17$ Orthorhombic, $Pna2_1$

Hall symbol: P 2c -2n

 $a = 18.725 (4) \text{ \AA}$ $b = 4.6256 (10) \text{ \AA}$ $c = 11.319 (2) \text{ \AA}$ $V = 980.4 (3) \text{ \AA}^3$ $Z = 4$ $F(000) = 456$ $D_x = 1.505 \text{ Mg m}^{-3}$ Mo $K\alpha$ radiation, $\lambda = 0.71073 \text{ \AA}$

Cell parameters from 4200 reflections

 $\theta = 2.8\text{--}32.5^\circ$ $\mu = 0.15 \text{ mm}^{-1}$ $T = 100 \text{ K}$

Plate, colourless

 $0.54 \times 0.29 \times 0.11 \text{ mm}$

Data collection

Bruker SMART APEXII DUO CCD area-detector
diffractometer

Radiation source: fine-focus sealed tube

Graphite monochromator

 φ and ω scansAbsorption correction: multi-scan
(*SADABS*; Bruker, 2009) $T_{\min} = 0.926$, $T_{\max} = 0.985$

12012 measured reflections

3216 independent reflections

2627 reflections with $I > 2\sigma(I)$ $R_{\text{int}} = 0.041$ $\theta_{\max} = 32.7^\circ$, $\theta_{\min} = 2.2^\circ$ $h = -28 \rightarrow 28$ $k = -6 \rightarrow 6$ $l = -16 \rightarrow 17$

Refinement

Refinement on F^2

Least-squares matrix: full

 $R[F^2 > 2\sigma(F^2)] = 0.046$ $wR(F^2) = 0.114$ $S = 1.07$

3216 reflections

177 parameters

1 restraint

Primary atom site location: structure-invariant
direct methodsSecondary atom site location: difference Fourier
mapHydrogen site location: inferred from
neighbouring sitesH atoms treated by a mixture of independent
and constrained refinement $w = 1/[\sigma^2(F_o^2) + (0.0538P)^2 + 0.1405P]$ where $P = (F_o^2 + 2F_c^2)/3$ $(\Delta/\sigma)_{\max} < 0.001$ $\Delta\rho_{\max} = 0.23 \text{ e \AA}^{-3}$ $\Delta\rho_{\min} = -0.30 \text{ e \AA}^{-3}$ Absolute structure: Flack (1983), 1368 Friedel
pairsAbsolute structure parameter: $-0.1 (7)$

Special details

Experimental. The crystal was placed in the cold stream of an Oxford Cryosystems Cobra open-flow nitrogen cryostat (Cosier & Glazer, 1986) operating at 100.0 (1) K.**Geometry.** All e.s.d.'s (except the e.s.d. in the dihedral angle between two l.s. planes) are estimated using the full covariance matrix. The cell e.s.d.'s are taken into account individually in the estimation of e.s.d.'s in distances, angles and torsion angles; correlations between e.s.d.'s in cell parameters are only used when they are defined by crystal symmetry. An approximate (isotropic) treatment of cell e.s.d.'s is used for estimating e.s.d.'s involving l.s. planes.**Refinement.** Refinement of F^2 against ALL reflections. The weighted R -factor wR and goodness of fit S are based on F^2 , conventional R -factors R are based on F , with F set to zero for negative F^2 . The threshold expression of $F^2 > \sigma(F^2)$ is used only for calculating R -factors(gt) etc. and is not relevant to the choice of reflections for refinement. R -factors based on F^2 are statistically about twice as large as those based on F , and R -factors based on ALL data will be even larger.Fractional atomic coordinates and isotropic or equivalent isotropic displacement parameters (\AA^2)

	x	y	z	$U_{\text{iso}}^*/U_{\text{eq}}$	Occ. (<1)
F1	0.5951 (6)	-0.360 (3)	0.6163 (9)	0.0636 (17)	0.505 (17)

F2	0.5409 (3)	0.0250 (13)	0.6382 (9)	0.075 (2)	0.505 (17)
F3	0.5859 (5)	-0.076 (4)	0.4723 (7)	0.104 (4)	0.505 (17)
F1X	0.6094 (7)	-0.352 (2)	0.5755 (15)	0.097 (4)	0.495 (17)
F2X	0.5478 (4)	-0.032 (2)	0.6626 (5)	0.080 (2)	0.495 (17)
F3X	0.5752 (3)	0.0168 (15)	0.4869 (6)	0.0479 (14)	0.495 (17)
O1	0.67666 (7)	0.0887 (3)	0.73348 (10)	0.0384 (3)	
O2	0.70767 (6)	0.1522 (3)	0.54434 (9)	0.0312 (3)	
N1	0.80834 (7)	0.5530 (3)	0.60374 (10)	0.0248 (3)	
N2	0.78211 (9)	0.5050 (4)	0.80182 (12)	0.0320 (3)	
C1	0.81952 (8)	0.6336 (4)	0.71687 (12)	0.0257 (3)	
C2	0.87136 (9)	0.8495 (4)	0.73742 (14)	0.0307 (3)	
H2A	0.8806	0.9141	0.8156	0.037*	
C3	0.90806 (9)	0.9649 (4)	0.64496 (15)	0.0316 (3)	
H3A	0.9432	1.1084	0.6599	0.038*	
C4	0.89527 (8)	0.8768 (4)	0.52703 (13)	0.0279 (3)	
C5	0.84486 (8)	0.6703 (4)	0.51114 (12)	0.0257 (3)	
H5A	0.8347	0.6054	0.4333	0.031*	
C6	0.93586 (10)	1.0012 (4)	0.42471 (17)	0.0364 (4)	
H6A	0.9186	0.9147	0.3510	0.055*	
H6B	0.9868	0.9594	0.4342	0.055*	
H6C	0.9286	1.2110	0.4221	0.055*	
C7	0.59832 (9)	-0.0794 (4)	0.58757 (15)	0.0312 (3)	
C8	0.66781 (9)	0.0707 (4)	0.62616 (13)	0.0268 (3)	
H2N2	0.7456 (13)	0.369 (6)	0.785 (2)	0.040 (6)*	
H1N2	0.7919 (14)	0.558 (6)	0.873 (3)	0.050 (7)*	
H1N1	0.7723 (13)	0.405 (6)	0.585 (2)	0.043 (6)*	

Atomic displacement parameters (\AA^2)

	U^{11}	U^{22}	U^{33}	U^{12}	U^{13}	U^{23}
F1	0.075 (3)	0.027 (2)	0.089 (4)	-0.0046 (19)	-0.017 (2)	0.007 (2)
F2	0.0328 (17)	0.044 (2)	0.148 (6)	0.0071 (15)	0.004 (3)	-0.043 (3)
F3	0.093 (4)	0.194 (10)	0.0252 (15)	-0.097 (5)	-0.010 (2)	0.014 (4)
F1X	0.092 (6)	0.021 (2)	0.177 (11)	0.005 (3)	-0.069 (7)	-0.017 (5)
F2X	0.041 (3)	0.154 (6)	0.044 (2)	-0.038 (3)	0.0180 (16)	-0.011 (3)
F3X	0.0410 (16)	0.060 (3)	0.042 (3)	-0.0108 (16)	-0.0251 (16)	0.0201 (19)
O1	0.0462 (7)	0.0534 (9)	0.0156 (5)	-0.0029 (6)	0.0001 (4)	0.0020 (5)
O2	0.0337 (5)	0.0450 (7)	0.0149 (4)	-0.0038 (5)	0.0021 (4)	-0.0058 (5)
N1	0.0316 (6)	0.0292 (7)	0.0136 (5)	0.0038 (5)	-0.0025 (4)	-0.0004 (5)
N2	0.0454 (8)	0.0368 (9)	0.0138 (5)	0.0023 (7)	0.0001 (5)	-0.0032 (5)
C1	0.0341 (7)	0.0277 (8)	0.0154 (6)	0.0089 (6)	-0.0027 (5)	-0.0032 (6)
C2	0.0412 (8)	0.0290 (9)	0.0220 (6)	0.0061 (7)	-0.0067 (6)	-0.0064 (6)
C3	0.0351 (8)	0.0299 (9)	0.0298 (7)	0.0036 (6)	-0.0051 (6)	-0.0059 (7)
C4	0.0305 (7)	0.0298 (9)	0.0235 (7)	0.0075 (6)	-0.0013 (5)	0.0003 (6)
C5	0.0321 (6)	0.0302 (8)	0.0147 (5)	0.0069 (6)	-0.0025 (5)	-0.0014 (5)
C6	0.0394 (8)	0.0377 (10)	0.0320 (7)	0.0008 (7)	0.0038 (7)	0.0033 (8)
C7	0.0380 (7)	0.0299 (9)	0.0255 (6)	-0.0003 (6)	-0.0007 (6)	0.0037 (6)
C8	0.0318 (7)	0.0305 (8)	0.0181 (6)	0.0052 (6)	-0.0001 (5)	-0.0008 (6)

Geometric parameters (Å, °)

F1—C7	1.341 (11)	N2—H1N2	0.86 (3)
F2—C7	1.311 (6)	C1—C2	1.412 (2)
F3—C7	1.325 (8)	C2—C3	1.361 (3)
F1X—C7	1.287 (11)	C2—H2A	0.9500
F2X—C7	1.290 (5)	C3—C4	1.416 (2)
F3X—C7	1.297 (6)	C3—H3A	0.9500
O1—C8	1.2289 (18)	C4—C5	1.355 (2)
O2—C8	1.2478 (19)	C4—C6	1.500 (2)
N1—C1	1.3500 (18)	C5—H5A	0.9500
N1—C5	1.3640 (19)	C6—H6A	0.9800
N1—H1N1	0.98 (3)	C6—H6B	0.9800
N2—C1	1.330 (2)	C6—H6C	0.9800
N2—H2N2	0.95 (3)	C7—C8	1.538 (2)
C1—N1—C5	122.78 (14)	C4—C6—H6A	109.5
C1—N1—H1N1	119.9 (15)	C4—C6—H6B	109.5
C5—N1—H1N1	117.3 (15)	H6A—C6—H6B	109.5
C1—N2—H2N2	121.8 (14)	C4—C6—H6C	109.5
C1—N2—H1N2	116.0 (19)	H6A—C6—H6C	109.5
H2N2—N2—H1N2	122 (2)	H6B—C6—H6C	109.5
N2—C1—N1	118.73 (15)	F1X—C7—F2X	110.9 (7)
N2—C1—C2	124.01 (14)	F1X—C7—F3X	107.3 (7)
N1—C1—C2	117.26 (14)	F2X—C7—F3X	106.0 (5)
C3—C2—C1	119.86 (14)	F2—C7—F1	102.4 (6)
C3—C2—H2A	120.1	F3—C7—F1	104.0 (8)
C1—C2—H2A	120.1	F1X—C7—C8	109.7 (5)
C2—C3—C4	121.77 (16)	F2X—C7—C8	110.8 (3)
C2—C3—H3A	119.1	F3X—C7—C8	112.1 (3)
C4—C3—H3A	119.1	F2—C7—C8	113.8 (3)
C5—C4—C3	116.49 (14)	F3—C7—C8	115.0 (4)
C5—C4—C6	121.40 (14)	F1—C7—C8	114.0 (5)
C3—C4—C6	122.10 (16)	O1—C8—O2	129.24 (16)
C4—C5—N1	121.84 (13)	O1—C8—C7	115.18 (15)
C4—C5—H5A	119.1	O2—C8—C7	115.57 (13)
N1—C5—H5A	119.1		
C5—N1—C1—N2	-179.15 (15)	F2X—C7—C8—O1	32.3 (6)
C5—N1—C1—C2	0.2 (2)	F3X—C7—C8—O1	150.5 (4)
N2—C1—C2—C3	178.70 (16)	F2—C7—C8—O1	51.3 (5)
N1—C1—C2—C3	-0.6 (2)	F3—C7—C8—O1	174.4 (9)
C1—C2—C3—C4	0.7 (2)	F1—C7—C8—O1	-65.7 (5)
C2—C3—C4—C5	-0.4 (2)	F1X—C7—C8—O2	88.4 (9)
C2—C3—C4—C6	-179.53 (17)	F2X—C7—C8—O2	-148.9 (5)
C3—C4—C5—N1	-0.1 (2)	F3X—C7—C8—O2	-30.7 (4)
C6—C4—C5—N1	179.11 (15)	F2—C7—C8—O2	-129.9 (5)
C1—N1—C5—C4	0.1 (2)	F3—C7—C8—O2	-6.8 (9)

F1X—C7—C8—O1 -90.5 (9) F1—C7—C8—O2 113.2 (5)

Hydrogen-bond geometry (Å, °)

<i>D—H...A</i>	<i>D—H</i>	<i>H...A</i>	<i>D...A</i>	<i>D—H...A</i>
N1—H1N1...O2	0.98 (3)	1.75 (3)	2.7281 (19)	177 (2)
N2—H2N2...O1	0.95 (3)	1.92 (3)	2.865 (2)	173 (2)
N2—H1N2...O2 ⁱ	0.86 (3)	1.99 (3)	2.8347 (18)	167 (3)
C3—H3A...F2 ⁱⁱ	0.95	2.51	3.429 (6)	164
C5—H5A...O1 ⁱⁱⁱ	0.95	2.27	3.1910 (19)	162

Symmetry codes: (i) $-x+3/2, y+1/2, z+1/2$; (ii) $x+1/2, -y+3/2, z$; (iii) $-x+3/2, y+1/2, z-1/2$.