

Acta Crystallographica Section E

Structure Reports

Online

ISSN 1600-5368

Bis[μ -(3-acetyl-2-hydroxy-6-methyl-4H-pyran-4-one- κ^3 O:O',O'')]diaquatetrakis-(pyridine- κ N)dicopper(II) diperchlorate

Ali Ourari,^a Wassila Derafa,^a Sofiane Bouacida,^{b,c,*}
Djoughra Aggoun^a and Jean-Claude Daran^d

^aLaboratoire d'Electrochimie, d'Ingénierie Moléculaire et de Catalyse Redox (LEIMCR), Faculté des Sciences de l'Ingénieur, Université Farhat Abbas, Sétif 19000, Algeria, ^bUnité de Recherche de Cimie de l'Environnement et Moléculaire Structurale, CHEMS, Université Mentouri-Constantine, 25000, Algeria, ^cDépartement Sciences de la Matière, Faculté des Sciences Exactes et Sciences de la Nature et de la Vie, Université Oum El Bouaghi, Algeria, and ^dLaboratoire de Chimie de Coordination, UPR CNRS 8241, 205 route de Narbonne, 31077 Toulouse cedex, France

Correspondence e-mail: bouacida_sofiane@yahoo.fr

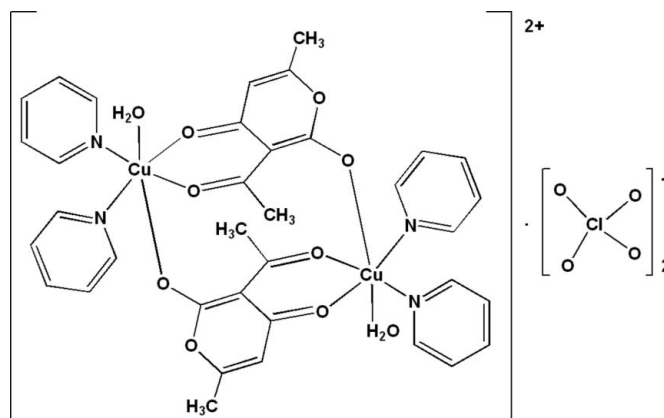
Received 15 September 2012; accepted 4 October 2012

Key indicators: single-crystal X-ray study; $T = 180$ K; mean $\sigma(\text{C}-\text{C}) = 0.006$ Å; R factor = 0.054; wR factor = 0.140; data-to-parameter ratio = 16.3.

In the centrosymmetric binuclear cation of the title compound, $[\text{Cu}(\text{C}_8\text{H}_7\text{O}_4)(\text{H}_2\text{O})(\text{C}_5\text{H}_5\text{N})_2]_2(\text{ClO}_4)_2$, the Cu^{II} atoms are bridged by a pair of two dehydroacetate anions in a bis-/monodentate mode. The distorted octahedral N_2O_4 coordination sphere of the metal cation is completed by two pyridine N atoms and one O atom of a water molecule. The complex cations and the perchlorate counter anions are arranged in layers parallel to (100). O—H...O hydrogen bonds between the coordinating water molecules and the perchlorate anions constitute ribbons parallel to $[10\bar{1}]$. C—H...O hydrogen bonds are also observed.

Related literature

For the synthesis of similar compounds, see: Tan & Kok-Peng Ang (1988); El-Kubaisi & Ismail (1994); Danilova *et al.* (2003); Munde *et al.* (2010); Ourari *et al.* (2011). For applications of related compounds, see: Maiti *et al.* (1988); Mohan *et al.* (1981); Das & Livingstone (1976); Ourari *et al.* (2008, 2012).



Experimental

Crystal data

$[\text{Cu}(\text{C}_8\text{H}_7\text{O}_4)(\text{H}_2\text{O})(\text{C}_5\text{H}_5\text{N})_2]_2(\text{ClO}_4)_2$
 $M_r = 1012.70$
Triclinic, $P\bar{1}$
 $a = 9.9371$ (4) Å
 $b = 10.3072$ (4) Å
 $c = 10.4440$ (5) Å
 $\alpha = 99.624$ (4)°

$\beta = 90.540$ (3)°
 $\gamma = 97.895$ (4)°
 $V = 1044.09$ (8) Å³
 $Z = 1$
Mo $K\alpha$ radiation
 $\mu = 1.23$ mm⁻¹
 $T = 180$ K
 $0.44 \times 0.34 \times 0.13$ mm

Data collection

Agilent Xcalibur diffractometer
Absorption correction: multi-scan
(*CrysAlis PRO*; Agilent, 2011)
 $T_{\text{min}} = 0.505$, $T_{\text{max}} = 1.000$

20280 measured reflections
4692 independent reflections
3889 reflections with $I > 2\sigma(I)$
 $R_{\text{int}} = 0.037$

Refinement

$R[F^2 > 2\sigma(F^2)] = 0.054$
 $wR(F^2) = 0.140$
 $S = 1.12$
4692 reflections
288 parameters

H atoms treated by a mixture of independent and constrained refinement
 $\Delta\rho_{\text{max}} = 1.14$ e Å⁻³
 $\Delta\rho_{\text{min}} = -0.65$ e Å⁻³

Table 1

Selected bond lengths (Å).

| | | | |
|--------|-----------|---------------------|-----------|
| Cu1—O1 | 1.922 (3) | Cu1—N1 | 2.006 (3) |
| Cu1—O2 | 1.962 (3) | Cu1—O1W | 2.325 (3) |
| Cu1—N2 | 2.005 (3) | Cu1—O4 ⁱ | 2.737 (3) |

Symmetry code: (i) $-x, -y + 1, -z$.

Table 2

Hydrogen-bond geometry (Å, °).

| $D-H\cdots A$ | $D-H$ | $H\cdots A$ | $D\cdots A$ | $D-H\cdots A$ |
|-----------------------------|----------|-------------|-------------|---------------|
| O1W—H1W...O12 | 0.83 (6) | 2.13 (6) | 2.934 (9) | 165 (6) |
| O1W—H2W...O11 ⁱⁱ | 0.74 (6) | 2.06 (6) | 2.772 (9) | 164 (6) |
| C9—H9...O13 ⁱⁱⁱ | 0.93 | 2.56 | 3.389 (7) | 148 |

Symmetry codes: (ii) $-x + 1, -y + 1, -z + 1$; (iii) $x - 1, y - 1, z$.

Data collection: *CrysAlis PRO* (Agilent, 2011); cell refinement: *CrysAlis PRO*; data reduction: *CrysAlis PRO*; program(s) used to solve structure: *SIR2002* (Burla *et al.*, 2005); program(s) used to refine structure: *SHELXL97* (Sheldrick, 2008); molecular graphics:

ORTEP-3 for Windows (Farrugia, 1997) and DIAMOND (Brandenburg & Berndt, 2001); software used to prepare material for publication: WinGX (Farrugia, 1999).

The authors thank the Algerian Ministère de l'Enseignement Supérieur et de la Recherche Scientifique for financial support.

Supplementary data and figures for this paper are available from the IUCr electronic archives (Reference: WM2685).

References

- Agilent (2011). *CrysAlis PRO*. Agilent Technologies Ltd, Yarnton, England.
- Brandenburg, K. & Berndt, M. (2001). *DIAMOND*. Crystal Impact, Bonn, Germany.
- Burla, M. C., Caliendo, R., Camalli, M., Carrozzini, B., Cascarano, G. L., De Caro, L., Giacovazzo, C., Polidori, G. & Spagna, R. (2005). *J. Appl. Cryst.* **38**, 381–388.
- Danilova, T. I., Rosenberg, D. I., Vorontsov, V., Starikova, Z. A. & Hopf, H. (2003). *Tetrahedron Asymmetry*, **14**, 1375–1383.
- Das, M. & Livingstone, S. E. (1976). *Inorg. Chim. Acta*, **19**, 5–10.
- El-Kubaisi, A. & Ismail, K. Z. (1994). *Can. J. Chem.* **72**, 1785–1788.
- Farrugia, L. J. (1997). *J. Appl. Cryst.* **30**, 565.
- Farrugia, L. J. (1999). *J. Appl. Cryst.* **32**, 837–838.
- Maiti, A., Guha, A. K. & Ghosh, S. (1988). *J. Inorg. Biochem.* **33**, 57–65.
- Mohan, M., Agarwal, A. & Jha, N. K. (1981). *J. Inorg. Biochem.* **34**, 41–54.
- Munde, A. A., Jagdale, A. N., Jahdavi, S. M. & Chondhekar, T. K. (2010). *J. Serb. Chem. Soc.* **75**, 349–359.
- Ourari, A., Baameur, L., Bouet, G. & Khan, A. M. (2008). *Electrochem. Commun.* **10**, 1736–1739.
- Ourari, A., Derafa, W., Bouacida, S. & Aggoun, D. (2011). *Acta Cryst.* **E67**, m1720–m1721.
- Ourari, A., Khelafi, M., Aggoun, D., Jutand, A. & Amatore, C. (2012). *Electrochim. Acta*, **75**, 366–370.
- Sheldrick, G. M. (2008). *Acta Cryst.* **A64**, 112–122.
- Tan, S. F. & Kok-Peng Ang, K. P. (1988). *Transition Met. Chem.* **13**, 64–68.

supporting information

Acta Cryst. (2012). E68, m1356–m1357 [doi:10.1107/S1600536812041608]

Bis[μ -(3-acetyl-2-hydroxy-6-methyl-4*H*-pyran-4-one- κ^3 O:O',O'')]diaquatetrakis-(pyridine- κ N)dicopper(II) diperchlorate

Ali Ourari, Wassila Derafa, Sofiane Bouacida, Djouhra Aggoun and Jean-Claude Daran

S1. Comment

Dehydroacetic acid is used for the synthesis of heterocyclic compounds, some of them with therapeutic activities useful for treatment of human diseases (Das & Livingstone, 1976; Mohan *et al.*, 1981; Maiti *et al.*, 1988). Schiff bases, on the other hand, are widely applied in the synthesis transition metal coordination compounds (Tan & Kok-Peng Ang, 1988; El-Kubaisi & Ismail, 1994; Munde *et al.*, 2010), showing catalytic activities particularly in the oxidation reactions carried out according to the cytochrome P450 model (Ourari *et al.*, 2008, 2011, 2012). Thus, we attempted to synthesize Schiff base half-units in order to use them as starting materials to obtain unsymmetrical tetradentate Schiff base complexes according the Danilova method's (Danilova *et al.*, 2003). Here we describe the formation of a new dinuclear complex, [Cu(C₈H₇O₄)(H₂O)(C₅H₅N)₂](ClO₄)₂, (I), prepared from dehydroacetic acid, copper perchlorate and pyridine in methanolic solution.

The molecular structure of the complex binuclear and centrosymmetric cation of (I) is illustrated in Fig. 1. The connection mode of the copper cations exhibits dimers, *i.e.* two copper cations are bridged by two dehydroacetate anions in a bis-/monodentate fashion. The asymmetric unit of (I) contains only half of such a dimer. The distorted octahedral coordination sphere around the copper cation is completed by two pyridine ligands and one water molecule. The bond lengths range from 1.922 (3) to 2.325 (3) Å for the Cu—O distances with one more considerably longer bond for Cu—O4 of 2.737 (3) Å; the Cu—N bond lengths are 2.005 (3) and 2.006 (3) Å.

The crystal packing in (I) can be described by alternating layers of cations and tetrahedral perchlorate anions arranged parallel to (100) (Fig. 2). Intermolecular O—H \cdots O hydrogen bonds (Table 2) between the coordinating water molecules and perchlorate anions constitute ribbons parallel to [10 $\bar{1}$]; C—H \cdots O hydrogen bonding interactions eventually links these constituents (Fig. 3).

S2. Experimental

0.168 g (1 mmol) dehydroacetic acid and 0.373 g (1 mmol) copper bis-perchlorate hexahydrate were dissolved in 20 ml of methanol. To this solution 0.108 g (1 mmol) of 1,2-phenyldiamine was added with an excess of pyridine. The mixture was held under stirring and argon atmosphere for two hours. After that time a precipitate appeared that was recovered by filtration. The solid was washed several times with methanol before it was dried under vacuum (yield 64%). From the resulting filtrate crystals were obtained by slow evaporation.

S3. Refinement

The H atoms were localized on Fourier maps but introduced in calculated positions and treated as riding on their parent C atom with C—H = 0.96 Å (methyl) or 0.93 Å (aromatic) and with $U_{\text{iso}}(\text{H}) = 1.2U_{\text{eq}}(\text{C})$ or $U_{\text{iso}}(\text{H}) = 1.5U_{\text{eq}}(\text{methyl})$. H1W and H2W protons of the water molecule were located in a difference Fourier map and were refined isotropically with

$$U_{\text{iso}}(\text{H}) = 1.5U_{\text{eq}}(\text{O}).$$

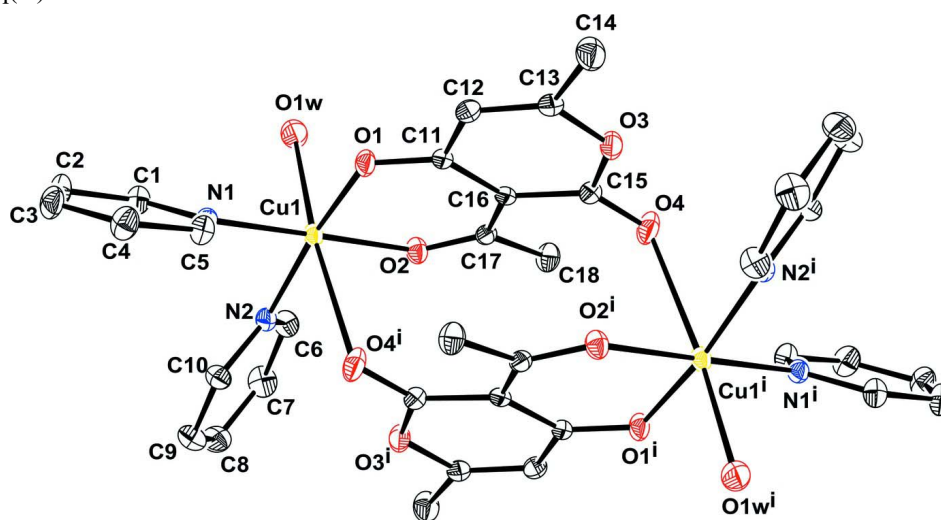


Figure 1

The binuclear complex cation of (I) with the atom-labelling scheme. Displacement ellipsoids are drawn at the 50% probability level. H atoms and perchlorate anions were omitted for clarity. [Symmetry code: (i)-x, -y + 1, -z.]

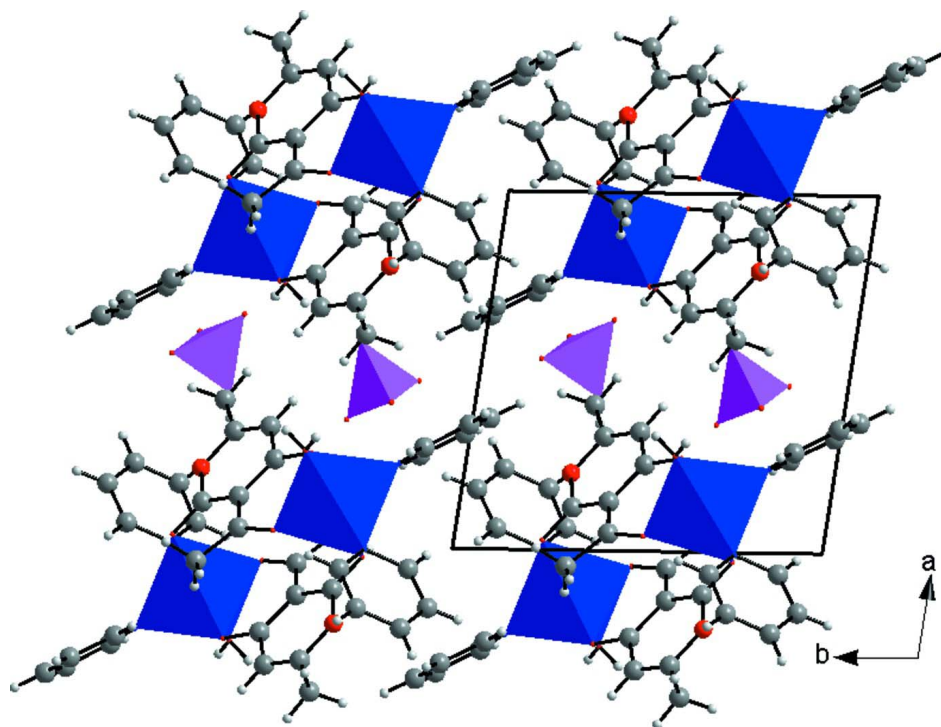
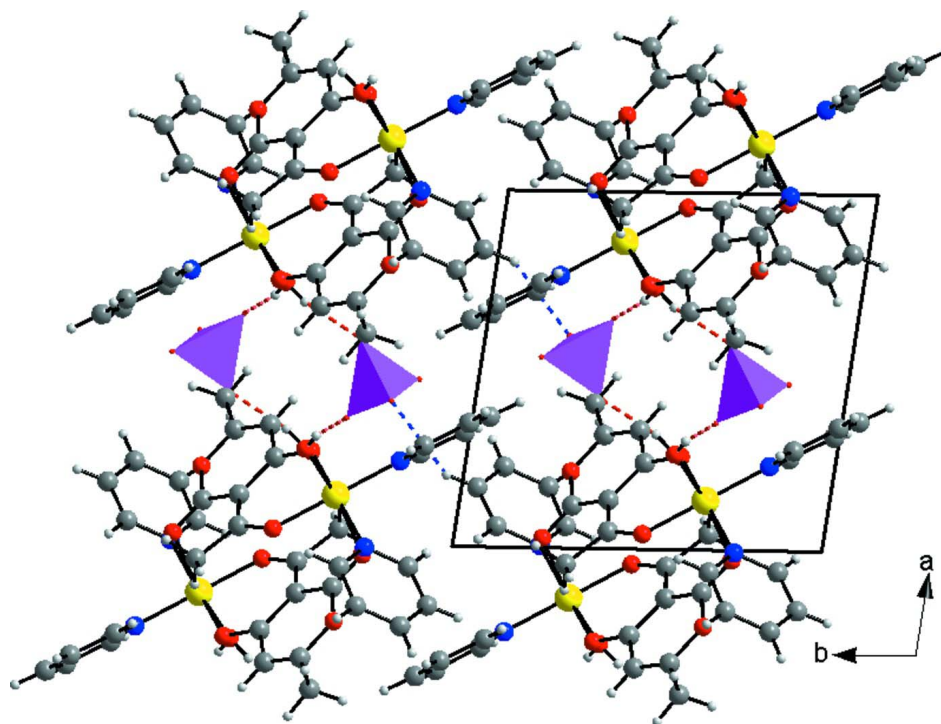


Figure 2

Alternating polyhedra of (I) viewed along [001] showing ClO_4 tetrahedra in pink and CuN_2O_4 octahedra in blue.

**Figure 3**

The connection of the components through O—H···O and C—H···O hydrogen bonds (dashed lines).

Bis[μ -(3-acetyl-2-hydroxy-6-methyl-4H-pyran-4-one- κ^3 O: O', O'')]diaquatetrakis(pyridine- κ N)dicopper(II) diperchlorate

Crystal data

[Cu(C₈H₇O₄)(H₂O)(C₅H₅N)₂](ClO₄)₂

$M_r = 1012.70$

Triclinic, $P\bar{1}$

$a = 9.9371(4) \text{ \AA}$

$b = 10.3072(4) \text{ \AA}$

$c = 10.4440(5) \text{ \AA}$

$\alpha = 99.624(4)^\circ$

$\beta = 90.540(3)^\circ$

$\gamma = 97.895(4)^\circ$

$V = 1044.09(8) \text{ \AA}^3$

$Z = 1$

$F(000) = 518$

$D_x = 1.611 \text{ Mg m}^{-3}$

Mo $K\alpha$ radiation, $\lambda = 0.71073 \text{ \AA}$

Cell parameters from 12265 reflections

$\theta = 2.6\text{--}28.3^\circ$

$\mu = 1.23 \text{ mm}^{-1}$

$T = 180 \text{ K}$

Fragment, dark blue

$0.44 \times 0.34 \times 0.13 \text{ mm}$

Data collection

Agilent Xcalibur
diffractometer

Radiation source: fine-focus sealed tube

Graphite monochromator

Detector resolution: $8.2632 \text{ pixels mm}^{-1}$

ω scans

Absorption correction: multi-scan
(*CrysAlis PRO*; Agilent, 2011)

$T_{\min} = 0.505$, $T_{\max} = 1.000$

20280 measured reflections

4692 independent reflections

3889 reflections with $I > 2\sigma(I)$

$R_{\text{int}} = 0.037$

$\theta_{\max} = 28.2^\circ$, $\theta_{\min} = 2.7^\circ$

$h = -13 \rightarrow 11$

$k = -13 \rightarrow 13$

$l = -13 \rightarrow 13$

Refinement

Refinement on F^2
 Least-squares matrix: full
 $R[F^2 > 2\sigma(F^2)] = 0.054$
 $wR(F^2) = 0.140$
 $S = 1.12$
 4692 reflections
 288 parameters
 0 restraints
 Primary atom site location: structure-invariant
 direct methods

Secondary atom site location: difference Fourier
 map
 Hydrogen site location: inferred from
 neighbouring sites
 H atoms treated by a mixture of independent
 and constrained refinement
 $w = 1/[\sigma^2(F_o^2) + (0.0426P)^2 + 3.6572P]$
 where $P = (F_o^2 + 2F_c^2)/3$
 $(\Delta/\sigma)_{\max} < 0.001$
 $\Delta\rho_{\max} = 1.14 \text{ e } \text{Å}^{-3}$
 $\Delta\rho_{\min} = -0.65 \text{ e } \text{Å}^{-3}$

Special details

Geometry. All e.s.d.'s (except the e.s.d. in the dihedral angle between two l.s. planes) are estimated using the full covariance matrix. The cell e.s.d.'s are taken into account individually in the estimation of e.s.d.'s in distances, angles and torsion angles; correlations between e.s.d.'s in cell parameters are only used when they are defined by crystal symmetry. An approximate (isotropic) treatment of cell e.s.d.'s is used for estimating e.s.d.'s involving l.s. planes.

Refinement. Refinement of F^2 against ALL reflections. The weighted R -factor wR and goodness of fit S are based on F^2 , conventional R -factors R are based on F , with F set to zero for negative F^2 . The threshold expression of $F^2 > \sigma(F^2)$ is used only for calculating R -factors(gt) etc. and is not relevant to the choice of reflections for refinement. R -factors based on F^2 are statistically about twice as large as those based on F , and R -factors based on ALL data will be even larger.

Fractional atomic coordinates and isotropic or equivalent isotropic displacement parameters (Å^2)

| | x | y | z | $U_{\text{iso}}^*/U_{\text{eq}}$ |
|------|--------------|--------------|--------------|----------------------------------|
| Cu1 | 0.13889 (5) | 0.33620 (4) | 0.22133 (5) | 0.02379 (14) |
| Cl1 | 0.54880 (11) | 0.73089 (10) | 0.34098 (11) | 0.0366 (3) |
| O3 | 0.2147 (3) | 0.7115 (3) | -0.0994 (3) | 0.0314 (6) |
| O4 | 0.0272 (3) | 0.7603 (3) | -0.0061 (3) | 0.0397 (7) |
| O2 | 0.0424 (3) | 0.4919 (3) | 0.2469 (3) | 0.0287 (6) |
| O1 | 0.2610 (3) | 0.4210 (3) | 0.1090 (3) | 0.0294 (6) |
| O1W | 0.2668 (4) | 0.4378 (4) | 0.4076 (4) | 0.0436 (8) |
| H1W | 0.322 (6) | 0.498 (6) | 0.387 (6) | 0.052* |
| H2W | 0.304 (6) | 0.415 (6) | 0.459 (6) | 0.052* |
| O14 | 0.5337 (5) | 0.8399 (4) | 0.4391 (4) | 0.0721 (13) |
| N1 | 0.2368 (3) | 0.1771 (3) | 0.1824 (3) | 0.0240 (6) |
| N2 | -0.0062 (3) | 0.2363 (3) | 0.3136 (3) | 0.0248 (7) |
| O13 | 0.5953 (5) | 0.7736 (5) | 0.2227 (4) | 0.0706 (12) |
| C12 | 0.3329 (4) | 0.5426 (4) | -0.0505 (4) | 0.0270 (8) |
| H12 | 0.404 | 0.4928 | -0.0678 | 0.032* |
| C1 | 0.2806 (4) | 0.1181 (4) | 0.2765 (4) | 0.0293 (8) |
| H1 | 0.2662 | 0.1531 | 0.3625 | 0.035* |
| C16 | 0.1369 (4) | 0.5980 (3) | 0.0778 (4) | 0.0223 (7) |
| C15 | 0.1196 (4) | 0.6938 (4) | -0.0055 (4) | 0.0267 (8) |
| C2 | 0.3464 (5) | 0.0069 (4) | 0.2508 (4) | 0.0347 (10) |
| H2 | 0.3773 | -0.0312 | 0.3182 | 0.042* |
| C18 | -0.0449 (5) | 0.6868 (4) | 0.2296 (4) | 0.0332 (9) |
| H18A | -0.1173 | 0.6794 | 0.1662 | 0.05* |
| H18B | 0.0055 | 0.7746 | 0.2409 | 0.05* |

| | | | | |
|------|-------------|-------------|-------------|-------------|
| H18C | -0.0821 | 0.6706 | 0.3109 | 0.05* |
| C5 | 0.2587 (4) | 0.1269 (4) | 0.0587 (4) | 0.0302 (9) |
| H5 | 0.2309 | 0.1692 | -0.0069 | 0.036* |
| C11 | 0.2416 (4) | 0.5159 (3) | 0.0508 (4) | 0.0230 (7) |
| C4 | 0.3208 (5) | 0.0149 (4) | 0.0251 (4) | 0.0372 (10) |
| H4 | 0.3326 | -0.019 | -0.0616 | 0.045* |
| C3 | 0.3650 (5) | -0.0458 (4) | 0.1227 (4) | 0.0371 (10) |
| H3 | 0.407 | -0.1216 | 0.1024 | 0.044* |
| C10 | -0.0591 (4) | 0.1101 (4) | 0.2648 (4) | 0.0293 (8) |
| H10 | -0.021 | 0.0671 | 0.1914 | 0.035* |
| C13 | 0.3180 (4) | 0.6368 (4) | -0.1201 (4) | 0.0277 (8) |
| C14 | 0.4058 (5) | 0.6759 (5) | -0.2262 (5) | 0.0427 (11) |
| H14A | 0.4826 | 0.6283 | -0.2323 | 0.064* |
| H14B | 0.4368 | 0.7697 | -0.2076 | 0.064* |
| H14C | 0.3545 | 0.6549 | -0.3071 | 0.064* |
| C17 | 0.0485 (4) | 0.5860 (4) | 0.1837 (4) | 0.0230 (7) |
| C9 | -0.1668 (5) | 0.0422 (4) | 0.3184 (4) | 0.0363 (10) |
| H9 | -0.1997 | -0.0455 | 0.2829 | 0.044* |
| C8 | -0.2253 (5) | 0.1065 (5) | 0.4261 (5) | 0.0395 (10) |
| H8 | -0.3 | 0.0637 | 0.4629 | 0.047* |
| C7 | -0.1711 (5) | 0.2350 (5) | 0.4780 (4) | 0.0410 (11) |
| H7 | -0.2075 | 0.2797 | 0.5515 | 0.049* |
| O11 | 0.6447 (9) | 0.6599 (10) | 0.3795 (6) | 0.179 (5) |
| O12 | 0.4201 (7) | 0.6613 (8) | 0.3069 (6) | 0.140 (3) |
| C6 | -0.0622 (5) | 0.2967 (4) | 0.4196 (4) | 0.0318 (9) |
| H6 | -0.0261 | 0.3835 | 0.455 | 0.038* |

Atomic displacement parameters (\AA^2)

| | U^{11} | U^{22} | U^{33} | U^{12} | U^{13} | U^{23} |
|-----|-------------|-------------|-------------|--------------|--------------|--------------|
| Cu1 | 0.0241 (3) | 0.0198 (2) | 0.0295 (2) | 0.00679 (17) | 0.00515 (18) | 0.00681 (17) |
| Cl1 | 0.0365 (6) | 0.0255 (5) | 0.0483 (6) | 0.0053 (4) | 0.0024 (5) | 0.0072 (4) |
| O3 | 0.0299 (16) | 0.0301 (14) | 0.0389 (16) | 0.0094 (12) | 0.0052 (12) | 0.0152 (12) |
| O4 | 0.0356 (17) | 0.0455 (18) | 0.0476 (18) | 0.0221 (14) | 0.0078 (14) | 0.0220 (15) |
| O2 | 0.0314 (15) | 0.0247 (13) | 0.0324 (14) | 0.0084 (11) | 0.0070 (12) | 0.0075 (11) |
| O1 | 0.0255 (15) | 0.0268 (14) | 0.0412 (16) | 0.0114 (11) | 0.0075 (12) | 0.0143 (12) |
| O1W | 0.050 (2) | 0.0353 (18) | 0.0444 (19) | 0.0003 (15) | -0.0157 (16) | 0.0085 (15) |
| O14 | 0.107 (4) | 0.050 (2) | 0.054 (2) | 0.015 (2) | -0.005 (2) | -0.0095 (18) |
| N1 | 0.0224 (16) | 0.0226 (15) | 0.0284 (16) | 0.0053 (12) | 0.0029 (13) | 0.0068 (12) |
| N2 | 0.0257 (17) | 0.0219 (15) | 0.0277 (16) | 0.0055 (13) | 0.0012 (13) | 0.0044 (12) |
| O13 | 0.080 (3) | 0.078 (3) | 0.057 (2) | 0.005 (2) | 0.007 (2) | 0.028 (2) |
| C12 | 0.0186 (19) | 0.0291 (19) | 0.034 (2) | 0.0055 (15) | 0.0027 (16) | 0.0067 (16) |
| C1 | 0.033 (2) | 0.030 (2) | 0.0273 (19) | 0.0101 (17) | 0.0069 (16) | 0.0080 (15) |
| C16 | 0.0181 (18) | 0.0178 (16) | 0.0297 (18) | -0.0008 (14) | -0.0027 (14) | 0.0030 (14) |
| C15 | 0.0223 (19) | 0.0242 (18) | 0.034 (2) | 0.0038 (15) | -0.0024 (16) | 0.0063 (15) |
| C2 | 0.041 (3) | 0.032 (2) | 0.036 (2) | 0.0147 (19) | 0.0022 (19) | 0.0151 (17) |
| C18 | 0.037 (2) | 0.032 (2) | 0.034 (2) | 0.0153 (18) | 0.0069 (18) | 0.0038 (17) |
| C5 | 0.033 (2) | 0.031 (2) | 0.0293 (19) | 0.0107 (17) | 0.0014 (17) | 0.0066 (16) |

| | | | | | | |
|-----|-------------|-------------|-------------|--------------|--------------|--------------|
| C11 | 0.0191 (18) | 0.0190 (16) | 0.0306 (19) | 0.0011 (14) | -0.0028 (15) | 0.0050 (14) |
| C4 | 0.044 (3) | 0.035 (2) | 0.032 (2) | 0.016 (2) | -0.0001 (19) | -0.0030 (17) |
| C3 | 0.039 (3) | 0.030 (2) | 0.045 (2) | 0.0190 (19) | 0.002 (2) | 0.0024 (18) |
| C10 | 0.029 (2) | 0.0258 (19) | 0.032 (2) | 0.0012 (16) | 0.0049 (17) | 0.0031 (15) |
| C13 | 0.0200 (19) | 0.0275 (19) | 0.035 (2) | 0.0015 (15) | -0.0001 (16) | 0.0067 (16) |
| C14 | 0.038 (3) | 0.045 (3) | 0.052 (3) | 0.011 (2) | 0.015 (2) | 0.022 (2) |
| C17 | 0.0201 (18) | 0.0207 (17) | 0.0277 (18) | 0.0035 (14) | -0.0028 (14) | 0.0020 (14) |
| C9 | 0.037 (2) | 0.032 (2) | 0.038 (2) | -0.0039 (18) | 0.0037 (19) | 0.0062 (18) |
| C8 | 0.032 (2) | 0.048 (3) | 0.041 (2) | 0.000 (2) | 0.0091 (19) | 0.016 (2) |
| C7 | 0.045 (3) | 0.045 (3) | 0.036 (2) | 0.012 (2) | 0.019 (2) | 0.0074 (19) |
| O11 | 0.250 (9) | 0.288 (10) | 0.075 (4) | 0.234 (9) | 0.050 (5) | 0.081 (5) |
| O12 | 0.113 (5) | 0.165 (6) | 0.098 (4) | -0.085 (5) | 0.023 (4) | -0.027 (4) |
| C6 | 0.037 (2) | 0.029 (2) | 0.028 (2) | 0.0066 (17) | 0.0056 (17) | 0.0011 (16) |

Geometric parameters (Å, °)

| | | | |
|---------------------|-------------|---------------|-----------|
| Cu1—O1 | 1.922 (3) | C16—C11 | 1.431 (5) |
| Cu1—O2 | 1.962 (3) | C16—C15 | 1.447 (5) |
| Cu1—N2 | 2.005 (3) | C2—C3 | 1.382 (6) |
| Cu1—N1 | 2.006 (3) | C2—H2 | 0.93 |
| Cu1—O1W | 2.325 (3) | C18—C17 | 1.509 (5) |
| Cu1—O4 ⁱ | 2.737 (3) | C18—H18A | 0.96 |
| Cl1—O11 | 1.374 (5) | C18—H18B | 0.96 |
| Cl1—O12 | 1.390 (6) | C18—H18C | 0.96 |
| Cl1—O14 | 1.414 (4) | C5—C4 | 1.379 (5) |
| Cl1—O13 | 1.439 (4) | C5—H5 | 0.93 |
| O3—C13 | 1.363 (5) | C4—C3 | 1.380 (6) |
| O3—C15 | 1.386 (5) | C4—H4 | 0.93 |
| O4—C15 | 1.219 (5) | C3—H3 | 0.93 |
| O2—C17 | 1.256 (4) | C10—C9 | 1.373 (6) |
| O1—C11 | 1.269 (4) | C10—H10 | 0.93 |
| O1W—H1W | 0.82 (6) | C13—C14 | 1.491 (6) |
| O1W—H2W | 0.74 (6) | C14—H14A | 0.96 |
| N1—C1 | 1.337 (5) | C14—H14B | 0.96 |
| N1—C5 | 1.340 (5) | C14—H14C | 0.96 |
| N2—C6 | 1.341 (5) | C9—C8 | 1.383 (6) |
| N2—C10 | 1.346 (5) | C9—H9 | 0.93 |
| C12—C13 | 1.329 (5) | C8—C7 | 1.377 (7) |
| C12—C11 | 1.437 (5) | C8—H8 | 0.93 |
| C12—H12 | 0.93 | C7—C6 | 1.378 (6) |
| C1—C2 | 1.385 (5) | C7—H7 | 0.93 |
| C1—H1 | 0.93 | C6—H6 | 0.93 |
| C16—C17 | 1.430 (5) | | |
| O1—Cu1—O2 | 89.43 (12) | C1—C2—H2 | 120.8 |
| O1—Cu1—N2 | 171.16 (14) | C17—C18—H18A | 109.5 |
| O2—Cu1—N2 | 90.52 (13) | C17—C18—H18B | 109.5 |
| O1—Cu1—N1 | 88.01 (13) | H18A—C18—H18B | 109.5 |

| | | | |
|-------------------------|-------------|----------------|------------|
| O2—Cu1—N1 | 176.25 (14) | C17—C18—H18C | 109.5 |
| N2—Cu1—N1 | 91.58 (14) | H18A—C18—H18C | 109.5 |
| O1—Cu1—O1W | 92.98 (14) | H18B—C18—H18C | 109.5 |
| O2—Cu1—O1W | 86.49 (13) | N1—C5—C4 | 122.4 (4) |
| N2—Cu1—O1W | 95.84 (14) | N1—C5—H5 | 118.8 |
| N1—Cu1—O1W | 96.38 (14) | C4—C5—H5 | 118.8 |
| O1—Cu1—O4 ⁱ | 87.05 (12) | O1—C11—C16 | 125.5 (4) |
| O2—Cu1—O4 ⁱ | 87.41 (12) | O1—C11—C12 | 117.0 (3) |
| N2—Cu1—O4 ⁱ | 84.12 (13) | C16—C11—C12 | 117.6 (3) |
| N1—Cu1—O4 ⁱ | 89.71 (12) | C5—C4—C3 | 118.7 (4) |
| O1W—Cu1—O4 ⁱ | 173.90 (11) | C5—C4—H4 | 120.6 |
| O11—C11—O12 | 116.7 (6) | C3—C4—H4 | 120.6 |
| O11—C11—O14 | 110.3 (4) | C4—C3—C2 | 119.4 (4) |
| O12—C11—O14 | 107.6 (4) | C4—C3—H3 | 120.3 |
| O11—C11—O13 | 106.5 (4) | C2—C3—H3 | 120.3 |
| O12—C11—O13 | 103.9 (4) | N2—C10—C9 | 122.9 (4) |
| O14—C11—O13 | 111.7 (3) | N2—C10—H10 | 118.5 |
| C13—O3—C15 | 122.2 (3) | C9—C10—H10 | 118.5 |
| C17—O2—Cu1 | 129.4 (2) | C12—C13—O3 | 121.5 (4) |
| C11—O1—Cu1 | 127.4 (2) | C12—C13—C14 | 127.0 (4) |
| Cu1—O1W—H1W | 107 (4) | O3—C13—C14 | 111.5 (3) |
| Cu1—O1W—H2W | 135 (5) | C13—C14—H14A | 109.5 |
| H1W—O1W—H2W | 103 (6) | C13—C14—H14B | 109.5 |
| C1—N1—C5 | 118.5 (3) | H14A—C14—H14B | 109.5 |
| C1—N1—Cu1 | 122.0 (3) | C13—C14—H14C | 109.5 |
| C5—N1—Cu1 | 119.5 (3) | H14A—C14—H14C | 109.5 |
| C6—N2—C10 | 117.7 (4) | H14B—C14—H14C | 109.5 |
| C6—N2—Cu1 | 120.9 (3) | O2—C17—C16 | 123.2 (3) |
| C10—N2—Cu1 | 121.1 (3) | O2—C17—C18 | 114.3 (3) |
| C13—C12—C11 | 121.4 (4) | C16—C17—C18 | 122.4 (3) |
| C13—C12—H12 | 119.3 | C10—C9—C8 | 118.8 (4) |
| C11—C12—H12 | 119.3 | C10—C9—H9 | 120.6 |
| N1—C1—C2 | 122.5 (4) | C8—C9—H9 | 120.6 |
| N1—C1—H1 | 118.7 | C7—C8—C9 | 118.8 (4) |
| C2—C1—H1 | 118.7 | C7—C8—H8 | 120.6 |
| C17—C16—C11 | 121.5 (3) | C9—C8—H8 | 120.6 |
| C17—C16—C15 | 119.6 (3) | C8—C7—C6 | 119.2 (4) |
| C11—C16—C15 | 118.9 (3) | C8—C7—H7 | 120.4 |
| O4—C15—O3 | 114.4 (3) | C6—C7—H7 | 120.4 |
| O4—C15—C16 | 127.6 (4) | N2—C6—C7 | 122.5 (4) |
| O3—C15—C16 | 118.0 (3) | N2—C6—H6 | 118.7 |
| C3—C2—C1 | 118.4 (4) | C7—C6—H6 | 118.7 |
| C3—C2—H2 | 120.8 | | |
| O1—Cu1—O2—C17 | 14.4 (3) | Cu1—O1—C11—C16 | 13.9 (6) |
| N2—Cu1—O2—C17 | -156.7 (3) | Cu1—O1—C11—C12 | -166.1 (3) |
| O1W—Cu1—O2—C17 | 107.5 (3) | C17—C16—C11—O1 | 5.2 (6) |
| O2—Cu1—O1—C11 | -19.7 (3) | C15—C16—C11—O1 | -174.0 (4) |

| | | | |
|----------------|------------|-----------------|------------|
| N1—Cu1—O1—C11 | 157.4 (3) | C17—C16—C11—C12 | -174.8 (3) |
| O1W—Cu1—O1—C11 | -106.1 (3) | C15—C16—C11—C12 | 6.0 (5) |
| O1—Cu1—N1—C1 | 130.8 (3) | C13—C12—C11—O1 | 177.6 (4) |
| N2—Cu1—N1—C1 | -58.0 (3) | C13—C12—C11—C16 | -2.4 (6) |
| O1W—Cu1—N1—C1 | 38.0 (3) | N1—C5—C4—C3 | -1.6 (7) |
| O1—Cu1—N1—C5 | -49.7 (3) | C5—C4—C3—C2 | -0.1 (7) |
| N2—Cu1—N1—C5 | 121.5 (3) | C1—C2—C3—C4 | 1.5 (7) |
| O1W—Cu1—N1—C5 | -142.6 (3) | C6—N2—C10—C9 | 0.2 (6) |
| O2—Cu1—N2—C6 | -39.9 (3) | Cu1—N2—C10—C9 | -174.0 (3) |
| N1—Cu1—N2—C6 | 143.3 (3) | C11—C12—C13—O3 | -0.7 (6) |
| O1W—Cu1—N2—C6 | 46.5 (3) | C11—C12—C13—C14 | 179.1 (4) |
| O2—Cu1—N2—C10 | 134.0 (3) | C15—O3—C13—C12 | -0.1 (6) |
| N1—Cu1—N2—C10 | -42.8 (3) | C15—O3—C13—C14 | -179.9 (4) |
| O1W—Cu1—N2—C10 | -139.6 (3) | Cu1—O2—C17—C16 | -2.4 (5) |
| C5—N1—C1—C2 | -0.5 (6) | Cu1—O2—C17—C18 | 178.1 (3) |
| Cu1—N1—C1—C2 | 179.0 (3) | C11—C16—C17—O2 | -11.1 (6) |
| C13—O3—C15—O4 | -174.1 (4) | C15—C16—C17—O2 | 168.1 (4) |
| C13—O3—C15—C16 | 3.8 (5) | C11—C16—C17—C18 | 168.4 (4) |
| C17—C16—C15—O4 | -8.3 (6) | C15—C16—C17—C18 | -12.4 (5) |
| C11—C16—C15—O4 | 170.9 (4) | N2—C10—C9—C8 | 1.1 (7) |
| C17—C16—C15—O3 | 174.0 (3) | C10—C9—C8—C7 | -1.9 (7) |
| C11—C16—C15—O3 | -6.7 (5) | C9—C8—C7—C6 | 1.4 (7) |
| N1—C1—C2—C3 | -1.2 (7) | C10—N2—C6—C7 | -0.7 (6) |
| C1—N1—C5—C4 | 2.0 (6) | Cu1—N2—C6—C7 | 173.5 (3) |
| Cu1—N1—C5—C4 | -177.5 (3) | C8—C7—C6—N2 | -0.1 (7) |

Symmetry code: (i) $-x, -y+1, -z$.

Hydrogen-bond geometry ($\text{\AA}, ^\circ$)

| <i>D</i> —H... <i>A</i> | <i>D</i> —H | H... <i>A</i> | <i>D</i> ... <i>A</i> | <i>D</i> —H... <i>A</i> |
|-----------------------------|-------------|---------------|-----------------------|-------------------------|
| O1W—H1W...O12 | 0.83 (6) | 2.13 (6) | 2.934 (9) | 165 (6) |
| O1W—H2W...O11 ⁱⁱ | 0.74 (6) | 2.06 (6) | 2.772 (9) | 164 (6) |
| C9—H9...O13 ⁱⁱⁱ | 0.93 | 2.56 | 3.389 (7) | 148 |

Symmetry codes: (ii) $-x+1, -y+1, -z+1$; (iii) $x-1, y-1, z$.