

Acta Crystallographica Section E

Structure Reports

Online

ISSN 1600-5368

Dimethylbis(pyrazine-2-carboxylato- κ^2N^1,O)tin(IV)

Marzieh Vafaei,^a Ezzatollah Najafi,^a Mostafa M. Amini^{a*} and Seik Weng Ng^b

^aDepartment of Chemistry, General Campus, Shahid Beheshti University, Tehran 1983963113, Iran, and ^bDepartment of Chemistry, University of Malaya, 50603 Kuala Lumpur, Malaysia

Correspondence e-mail: m-pouramini@cc.sbu.ac.ir

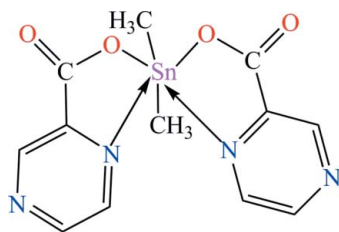
Received 4 October 2012; accepted 15 October 2012

Key indicators: single-crystal X-ray study; $T = 295$ K; mean $\sigma(\text{C}-\text{C}) = 0.003$ Å; R factor = 0.020; wR factor = 0.051; data-to-parameter ratio = 16.6.

In the title compound, $[\text{Sn}(\text{CH}_3)_2(\text{C}_5\text{H}_3\text{N}_2\text{O}_2)_2]$, the Sn^{IV} atom is twice N,O -chelated by two pyrazine-2-carboxylate ligands. The distorted six-coordination is completed by two tin-bound methyl C atoms. The $\text{C}_2\text{N}_2\text{O}_2$ donor set defines a skewed trapezoidal-bipyramidal geometry. Intermolecular π - π interactions between the pyrazine rings [centroid-centroid distance = 3.8112 (13) Å] are observed.

Related literature

For background to organotin compounds, see: Dakternieks *et al.* (2003); Tiekink (1991); Yin *et al.* (2005).



Experimental

Crystal data

$[\text{Sn}(\text{CH}_3)_2(\text{C}_5\text{H}_3\text{N}_2\text{O}_2)_2]$

$M_r = 394.95$

Monoclinic, $P2_1/c$
 $a = 9.2887$ (6) Å
 $b = 12.3253$ (7) Å
 $c = 12.6596$ (7) Å
 $\beta = 103.738$ (1)°
 $V = 1407.88$ (14) Å³

$Z = 4$
 Mo $K\alpha$ radiation
 $\mu = 1.84$ mm⁻¹
 $T = 295$ K
 $0.40 \times 0.40 \times 0.20$ mm

Data collection

Bruker APEXII CCD diffractometer
 Absorption correction: multi-scan (SADABS; Sheldrick, 1996)
 $T_{\text{min}} = 0.527$, $T_{\text{max}} = 0.710$

8657 measured reflections
 3193 independent reflections
 2892 reflections with $I > 2\sigma(I)$
 $R_{\text{int}} = 0.022$

Refinement

$R[F^2 > 2\sigma(F^2)] = 0.020$
 $wR(F^2) = 0.051$
 $S = 1.06$
 3193 reflections

192 parameters
 H-atom parameters constrained
 $\Delta\rho_{\text{max}} = 0.35$ e Å⁻³
 $\Delta\rho_{\text{min}} = -0.47$ e Å⁻³

Table 1

Selected bond lengths (Å).

Sn1—C1	2.097 (2)	Sn1—O3	2.1238 (15)
Sn1—C2	2.095 (2)	Sn1—N1	2.6646 (18)
Sn1—O1	2.1506 (16)	Sn1—N3	2.5107 (18)

Data collection: APEX2 (Bruker, 2007); cell refinement: SAINT (Bruker, 2007); data reduction: SAINT; program(s) used to solve structure: SHELXS97 (Sheldrick, 2008); program(s) used to refine structure: SHELXL97 (Sheldrick, 2008); molecular graphics: X-SEED (Barbour, 2001); software used to prepare material for publication: publCIF (Westrip, 2010).

We thank Shahid Beheshti University for supporting this study.

Supplementary data and figures for this paper are available from the IUCr electronic archives (Reference: HY2594).

References

- Barbour, L. J. (2001). *J. Supramol. Chem.* **1**, 189–191.
 Bruker (2007). APEX2 and SAINT. Bruker AXS Inc., Madison, Wisconsin, USA.
 Dakternieks, D., Duthie, A., Smyth, D. R., Stapleton, C. P. D. & Tiekink, E. R. T. (2003). *Organometallics*, **22**, 4599–4603.
 Sheldrick, G. M. (1996). SADABS. University of Göttingen, Germany.
 Sheldrick, G. M. (2008). *Acta Cryst.* **A64**, 112–122.
 Tiekink, E. R. T. (1991). *Appl. Organomet. Chem.* **5**, 1–23.
 Westrip, S. P. (2010). *J. Appl. Cryst.* **43**, 920–925.
 Yin, H.-D., Wang, Q.-B. & Xue, C.-C. (2005). *J. Organomet. Chem.* **690**, 3111–3117.

supporting information

Acta Cryst. (2012). E68, m1384 [doi:10.1107/S160053681204295X]

Dimethylbis(pyrazine-2-carboxylato- κ^2N^1,O)tin(IV)

Marzieh Vafae, Ezzatollah Najafi, Mostafa M. Amini and Seik Weng Ng

S1. Comment

The reaction of appropriate amount of dimethyltin dichloride and pyrazine-2-carboxylic acid in dry methanol provided the title compound in good yield. The six-coordinated geometry around the Sn^{IV} atom is better described as skew-trapezoidal bipyramidal (Fig. 1, Table 1). Intermolecular π - π interactions between the pyrazine rings [centroid-centroid distance = 3.8112 (13) Å] stabilize the structure.

S2. Experimental

Dimethyltin dichloride (0.22 g, 1 mmol) was treated with sodium methoxide (0.1 g, 2 mmol) in methanol (10 ml) to produce dimethyltin dimethoxide and sodium chloride. The sodium chloride precipitate was removed by filtration and then pyrazine-2-carboxylic acid (0.248 g, 2 mmol) in methanol (20 ml) was added to the filtrate. The solution was refluxed for 3 h. Evaporation of the solvent yielded a white solid, which was purified by recrystallization from methanol (yield: 70%. m.p.: 118–120°C).

S3. Refinement

H atoms were placed in calculated positions and refined as riding atoms, with C–H = 0.93 (CH) and 0.96 (CH₃) Å and with $U_{\text{iso}}(\text{H}) = 1.2(1.5 \text{ for methyl})U_{\text{eq}}(\text{C})$. Omitted reflections owing to bad disagreement were (-9 10 6), (-6 13 3), (8 0 4), (2 0 8) and (-1 8 6).

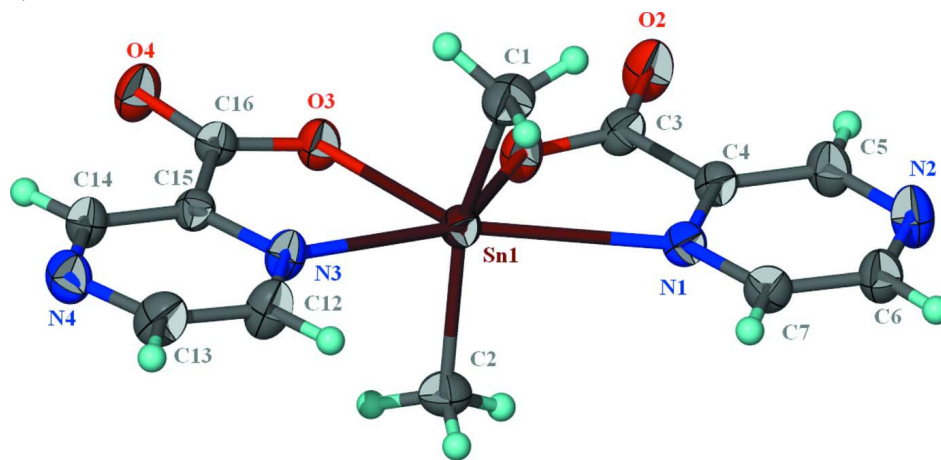


Figure 1

Molecular structure of the title compound. Displacement ellipsoids are drawn at the 50% probability level.

Dimethylbis(pyrazine-2-carboxylato- κ^2 N¹,O)tin(IV)

Crystal data

[Sn(CH₃)₂(C₅H₃N₂O₂)₂]
M_r = 394.95
 Monoclinic, *P*2₁/*c*
 Hall symbol: -*P* 2ybc
a = 9.2887 (6) Å
b = 12.3253 (7) Å
c = 12.6596 (7) Å
 β = 103.738 (1)°
V = 1407.88 (14) Å³
Z = 4

F(000) = 776
D_x = 1.863 Mg m⁻³
 Mo *K* α radiation, λ = 0.71073 Å
 Cell parameters from 5890 reflections
 θ = 2.3–28.3°
 μ = 1.84 mm⁻¹
T = 295 K
 Prism, colorless
 0.40 × 0.40 × 0.20 mm

Data collection

Bruker APEXII CCD
 diffractometer
 Radiation source: fine-focus sealed tube
 Graphite monochromator
 φ and ω scans
 Absorption correction: multi-scan
 (SADABS; Sheldrick, 1996)
T_{min} = 0.527, *T_{max}* = 0.710

8657 measured reflections
 3193 independent reflections
 2892 reflections with *I* > 2 σ (*I*)
R_{int} = 0.022
 θ_{\max} = 27.5°, θ_{\min} = 2.3°
h = -12→11
k = -16→13
l = -15→16

Refinement

Refinement on *F*²
 Least-squares matrix: full
R[*F*² > 2 σ (*F*²)] = 0.020
wR(*F*²) = 0.051
S = 1.06
 3193 reflections
 192 parameters
 0 restraints
 Primary atom site location: structure-invariant
 direct methods

Secondary atom site location: difference Fourier
 map
 Hydrogen site location: inferred from
 neighbouring sites
 H-atom parameters constrained
 $w = 1/[\sigma^2(F_o^2) + (0.0201P)^2 + 0.7349P]$
 where $P = (F_o^2 + 2F_c^2)/3$
 $(\Delta/\sigma)_{\max} = 0.001$
 $\Delta\rho_{\max} = 0.35 \text{ e \AA}^{-3}$
 $\Delta\rho_{\min} = -0.47 \text{ e \AA}^{-3}$

Fractional atomic coordinates and isotropic or equivalent isotropic displacement parameters (Å²)

	<i>x</i>	<i>y</i>	<i>z</i>	<i>U_{iso}</i> */ <i>U_{eq}</i>
Sn1	0.826212 (14)	0.699389 (11)	0.602141 (11)	0.02943 (6)
O1	0.87907 (17)	0.71196 (14)	0.44616 (13)	0.0415 (4)
O2	0.99121 (19)	0.78275 (16)	0.32619 (13)	0.0493 (4)
O3	0.62830 (16)	0.65997 (14)	0.48535 (12)	0.0374 (3)
O4	0.39196 (17)	0.61066 (15)	0.43503 (13)	0.0469 (4)
N1	1.09601 (19)	0.77904 (14)	0.61292 (14)	0.0320 (4)
N2	1.3488 (2)	0.87890 (18)	0.57415 (17)	0.0478 (5)
N3	0.62453 (19)	0.65022 (15)	0.69497 (14)	0.0340 (4)
N4	0.3759 (2)	0.57674 (16)	0.76062 (16)	0.0421 (4)
C1	0.7815 (3)	0.86219 (19)	0.6305 (2)	0.0466 (6)
H1A	0.8346	0.9084	0.5918	0.070*
H1B	0.8123	0.8772	0.7070	0.070*
H1C	0.6770	0.8755	0.6057	0.070*

C2	0.9233 (3)	0.54697 (19)	0.6433 (2)	0.0444 (5)
H2A	1.0075	0.5391	0.6123	0.067*
H2B	0.8523	0.4912	0.6155	0.067*
H2C	0.9546	0.5408	0.7210	0.067*
C3	0.9857 (2)	0.76167 (19)	0.41998 (17)	0.0346 (4)
C4	1.1116 (2)	0.79754 (16)	0.51203 (17)	0.0302 (4)
C5	1.2359 (3)	0.8484 (2)	0.49323 (19)	0.0405 (5)
H5	1.2409	0.8618	0.4219	0.049*
C6	1.3319 (3)	0.86057 (19)	0.67419 (19)	0.0417 (5)
H6	1.4074	0.8812	0.7331	0.050*
C7	1.2068 (3)	0.81211 (17)	0.69396 (18)	0.0361 (5)
H7	1.1996	0.8023	0.7654	0.043*
C12	0.6207 (3)	0.6469 (2)	0.79961 (18)	0.0445 (6)
H12	0.7030	0.6696	0.8523	0.053*
C13	0.4970 (3)	0.6103 (2)	0.83094 (19)	0.0449 (6)
H13	0.4986	0.6092	0.9047	0.054*
C14	0.3798 (2)	0.58104 (18)	0.65644 (18)	0.0367 (5)
H14	0.2974	0.5577	0.6042	0.044*
C15	0.5024 (2)	0.61905 (16)	0.62266 (16)	0.0295 (4)
C16	0.5045 (2)	0.62962 (16)	0.50495 (17)	0.0321 (4)

Atomic displacement parameters (Å²)

	U^{11}	U^{22}	U^{33}	U^{12}	U^{13}	U^{23}
Sn1	0.02845 (8)	0.03258 (9)	0.02919 (9)	0.00030 (5)	0.01068 (6)	0.00025 (5)
O1	0.0333 (8)	0.0637 (11)	0.0291 (8)	-0.0101 (7)	0.0106 (6)	-0.0007 (7)
O2	0.0415 (9)	0.0830 (13)	0.0266 (8)	-0.0074 (8)	0.0144 (7)	0.0015 (8)
O3	0.0337 (8)	0.0518 (9)	0.0280 (7)	-0.0071 (7)	0.0097 (6)	0.0015 (7)
O4	0.0346 (8)	0.0667 (11)	0.0359 (8)	-0.0095 (8)	0.0012 (7)	-0.0012 (8)
N1	0.0310 (9)	0.0379 (9)	0.0296 (9)	0.0011 (7)	0.0123 (7)	0.0020 (7)
N2	0.0421 (11)	0.0589 (13)	0.0449 (11)	-0.0164 (9)	0.0151 (9)	-0.0052 (10)
N3	0.0278 (8)	0.0442 (10)	0.0309 (9)	-0.0032 (7)	0.0088 (7)	-0.0047 (8)
N4	0.0380 (10)	0.0471 (11)	0.0464 (11)	-0.0019 (8)	0.0203 (9)	0.0023 (9)
C1	0.0429 (13)	0.0383 (12)	0.0571 (15)	0.0043 (10)	0.0089 (11)	-0.0073 (11)
C2	0.0437 (13)	0.0380 (12)	0.0511 (14)	0.0060 (10)	0.0104 (11)	0.0047 (10)
C3	0.0303 (10)	0.0456 (12)	0.0303 (10)	0.0039 (9)	0.0119 (8)	-0.0010 (9)
C4	0.0287 (10)	0.0363 (10)	0.0289 (10)	0.0026 (8)	0.0134 (8)	-0.0002 (8)
C5	0.0397 (12)	0.0510 (13)	0.0353 (11)	-0.0075 (10)	0.0175 (9)	0.0000 (10)
C6	0.0394 (12)	0.0449 (13)	0.0404 (12)	-0.0090 (10)	0.0082 (10)	-0.0043 (10)
C7	0.0402 (12)	0.0396 (11)	0.0296 (11)	0.0002 (9)	0.0106 (9)	-0.0006 (8)
C12	0.0348 (11)	0.0687 (16)	0.0308 (11)	-0.0037 (11)	0.0093 (9)	-0.0065 (11)
C13	0.0424 (12)	0.0627 (15)	0.0338 (11)	0.0054 (11)	0.0171 (10)	0.0010 (11)
C14	0.0301 (10)	0.0415 (12)	0.0399 (12)	-0.0040 (9)	0.0109 (9)	-0.0025 (9)
C15	0.0276 (9)	0.0286 (10)	0.0333 (10)	0.0016 (7)	0.0091 (8)	-0.0016 (8)
C16	0.0305 (10)	0.0330 (10)	0.0328 (10)	-0.0004 (8)	0.0079 (8)	-0.0006 (8)

Geometric parameters (Å, °)

Sn1—C1	2.097 (2)	C1—H1A	0.9600
Sn1—C2	2.095 (2)	C1—H1B	0.9600
Sn1—O1	2.1506 (16)	C1—H1C	0.9600
Sn1—O3	2.1238 (15)	C2—H2A	0.9600
Sn1—N1	2.6646 (18)	C2—H2B	0.9600
Sn1—N3	2.5107 (18)	C2—H2C	0.9600
O1—C3	1.274 (3)	C3—C4	1.508 (3)
O2—C3	1.228 (3)	C4—C5	1.383 (3)
O3—C16	1.288 (3)	C5—H5	0.9300
O4—C16	1.221 (2)	C6—C7	1.382 (3)
N1—C7	1.332 (3)	C6—H6	0.9300
N1—C4	1.339 (3)	C7—H7	0.9300
N2—C6	1.332 (3)	C12—C13	1.378 (3)
N2—C5	1.334 (3)	C12—H12	0.9300
N3—C12	1.334 (3)	C13—H13	0.9300
N3—C15	1.334 (3)	C14—C15	1.389 (3)
N4—C13	1.324 (3)	C14—H14	0.9300
N4—C14	1.329 (3)	C15—C16	1.501 (3)
C2—Sn1—C1	154.98 (10)	Sn1—C2—H2C	109.5
C2—Sn1—O3	102.62 (8)	H2A—C2—H2C	109.5
C1—Sn1—O3	99.44 (8)	H2B—C2—H2C	109.5
C2—Sn1—O1	96.58 (8)	O2—C3—O1	124.5 (2)
C1—Sn1—O1	100.72 (9)	O2—C3—C4	118.9 (2)
O3—Sn1—O1	74.09 (6)	O1—C3—C4	116.63 (18)
C2—Sn1—N3	89.54 (8)	N1—C4—C5	121.7 (2)
C1—Sn1—N3	87.17 (9)	N1—C4—C3	116.59 (18)
O3—Sn1—N3	69.63 (6)	C5—C4—C3	121.71 (19)
O1—Sn1—N3	143.67 (6)	N2—C5—C4	122.1 (2)
C2—Sn1—N1	88.49 (8)	N2—C5—H5	118.9
C1—Sn1—N1	82.01 (8)	C4—C5—H5	118.9
O3—Sn1—N1	140.17 (5)	N2—C6—C7	122.7 (2)
O1—Sn1—N1	66.64 (6)	N2—C6—H6	118.7
N3—Sn1—N1	149.56 (5)	C7—C6—H6	118.7
C3—O1—Sn1	129.40 (14)	N1—C7—C6	121.4 (2)
C16—O3—Sn1	126.66 (13)	N1—C7—H7	119.3
C7—N1—C4	116.35 (18)	C6—C7—H7	119.3
C7—N1—Sn1	134.17 (14)	N3—C12—C13	121.1 (2)
C4—N1—Sn1	109.12 (13)	N3—C12—H12	119.5
C6—N2—C5	115.7 (2)	C13—C12—H12	119.5
C12—N3—C15	116.99 (19)	N4—C13—C12	122.8 (2)
C12—N3—Sn1	132.12 (15)	N4—C13—H13	118.6
C15—N3—Sn1	110.85 (13)	C12—C13—H13	118.6
C13—N4—C14	115.86 (19)	N4—C14—C15	122.4 (2)
Sn1—C1—H1A	109.5	N4—C14—H14	118.8
Sn1—C1—H1B	109.5	C15—C14—H14	118.8

H1A—C1—H1B	109.5	N3—C15—C14	120.76 (19)
Sn1—C1—H1C	109.5	N3—C15—C16	116.52 (18)
H1A—C1—H1C	109.5	C14—C15—C16	122.70 (18)
H1B—C1—H1C	109.5	O4—C16—O3	124.5 (2)
Sn1—C2—H2A	109.5	O4—C16—C15	119.47 (19)
Sn1—C2—H2B	109.5	O3—C16—C15	116.07 (17)
H2A—C2—H2B	109.5		
C2—Sn1—O1—C3	-98.1 (2)	C7—N1—C4—C5	-0.1 (3)
C1—Sn1—O1—C3	63.8 (2)	Sn1—N1—C4—C5	173.91 (17)
O3—Sn1—O1—C3	160.6 (2)	C7—N1—C4—C3	-179.20 (18)
N3—Sn1—O1—C3	163.69 (17)	Sn1—N1—C4—C3	-5.2 (2)
N1—Sn1—O1—C3	-12.59 (18)	O2—C3—C4—N1	175.7 (2)
C2—Sn1—O3—C16	83.58 (19)	O1—C3—C4—N1	-3.5 (3)
C1—Sn1—O3—C16	-84.53 (19)	O2—C3—C4—C5	-3.4 (3)
O1—Sn1—O3—C16	176.92 (19)	O1—C3—C4—C5	177.4 (2)
N3—Sn1—O3—C16	-1.15 (17)	C6—N2—C5—C4	-2.2 (4)
N1—Sn1—O3—C16	-173.35 (15)	N1—C4—C5—N2	2.0 (4)
C2—Sn1—N1—C7	-81.4 (2)	C3—C4—C5—N2	-178.9 (2)
C1—Sn1—N1—C7	75.4 (2)	C5—N2—C6—C7	0.7 (4)
O3—Sn1—N1—C7	170.55 (17)	C4—N1—C7—C6	-1.4 (3)
O1—Sn1—N1—C7	-179.2 (2)	Sn1—N1—C7—C6	-173.53 (16)
N3—Sn1—N1—C7	5.1 (3)	N2—C6—C7—N1	1.2 (4)
C2—Sn1—N1—C4	106.05 (15)	C15—N3—C12—C13	1.5 (4)
C1—Sn1—N1—C4	-97.16 (15)	Sn1—N3—C12—C13	-175.99 (18)
O3—Sn1—N1—C4	-1.98 (18)	C14—N4—C13—C12	-0.5 (4)
O1—Sn1—N1—C4	8.22 (13)	N3—C12—C13—N4	0.0 (4)
N3—Sn1—N1—C4	-167.44 (13)	C13—N4—C14—C15	-0.5 (3)
C2—Sn1—N3—C12	77.7 (2)	C12—N3—C15—C14	-2.4 (3)
C1—Sn1—N3—C12	-77.5 (2)	Sn1—N3—C15—C14	175.58 (16)
O3—Sn1—N3—C12	-178.7 (2)	C12—N3—C15—C16	176.3 (2)
O1—Sn1—N3—C12	178.2 (2)	Sn1—N3—C15—C16	-5.6 (2)
N1—Sn1—N3—C12	-8.5 (3)	N4—C14—C15—N3	2.0 (3)
C2—Sn1—N3—C15	-99.93 (15)	N4—C14—C15—C16	-176.7 (2)
C1—Sn1—N3—C15	104.88 (15)	Sn1—O3—C16—O4	177.83 (17)
O3—Sn1—N3—C15	3.72 (13)	Sn1—O3—C16—C15	-1.4 (3)
O1—Sn1—N3—C15	0.6 (2)	N3—C15—C16—O4	-174.2 (2)
N1—Sn1—N3—C15	173.84 (12)	C14—C15—C16—O4	4.6 (3)
Sn1—O1—C3—O2	-164.70 (18)	N3—C15—C16—O3	5.1 (3)
Sn1—O1—C3—C4	14.5 (3)	C14—C15—C16—O3	-176.11 (19)
