

Diaquabis(4-formylbenzoato- κO^1)bis-(nicotinamide- κN^1)copper(II)

Mustafa Sertçelik,^a Nagihan Çaylak Delibaş,^b Hacı Necefoğlu^a and Tuncer Hökelek^{c*}

^aDepartment of Chemistry, Kafkas University, 36100 Kars, Turkey, ^bDepartment of Physics, Sakarya University, 54187 Esentepe, Sakarya, Turkey, and ^cDepartment of Physics, Hacettepe University, 06800 Beytepe, Ankara, Turkey

Correspondence e-mail: merzifon@hacettepe.edu.tr

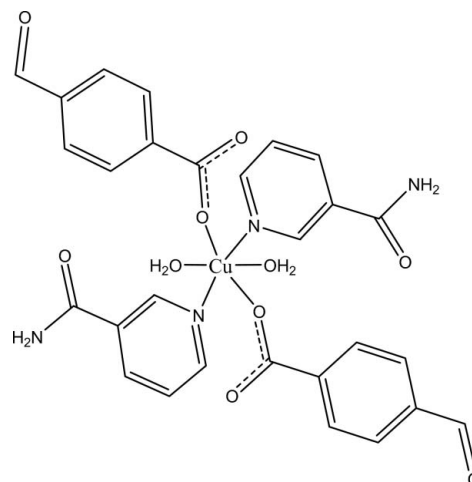
Received 21 June 2012; accepted 25 June 2012

Key indicators: single-crystal X-ray study; $T = 100$ K; mean $\sigma(C-C) = 0.002$ Å; R factor = 0.025; wR factor = 0.066; data-to-parameter ratio = 16.1.

In the title complex, $[Cu(C_8H_5O_3)_2(C_6H_6N_2O)_2(H_2O)_2]$, the Cu^{II} cation is located on an inversion center and is coordinated by two 4-formylbenzoate (FB) anions, two nicotinamide (NA) ligands and two water molecules in an elongated distorted octahedral geometry. The dihedral angle between the carboxylate group and the adjacent benzene ring is 23.00 (10)°, while the pyridine ring and the benzene ring are oriented at a dihedral angle of 85.34 (4)°. An intramolecular $O-H \cdots O$ hydrogen bond occurs between coordinating water molecule and the carboxylate group. In the crystal, $N-H \cdots O$, $O-H \cdots O$ and weak $C-H \cdots O$ hydrogen bonds link the molecules into a three-dimensional supramolecular network. A weak $C-H \cdots \pi$ interaction also occurs in the crystal.

Related literature

For literature on niacin, see: Krishnamachari (1974). For information on the nicotinic acid derivative N,N -diethylnicotinamide, see: Bigoli *et al.* (1972). For related structures, see: Aydın *et al.* (2012); Hökelek *et al.* (1996, 2009*a,b*); Hökelek & Necefoğlu (1998, 2007); Necefoğlu *et al.* (2011*a,b*); Sertçelik *et al.* (2012). For bond-length data, see: Allen *et al.* (1987).



Experimental

Crystal data

$[Cu(C_8H_5O_3)_2(C_6H_6N_2O)_2(H_2O)_2]$
 $M_r = 642.08$
 Triclinic, $P\bar{1}$
 $a = 7.8175$ (2) Å
 $b = 9.6539$ (3) Å
 $c = 9.8361$ (3) Å
 $\alpha = 77.053$ (3)°
 $\beta = 74.041$ (2)°
 $\gamma = 87.295$ (3)°
 $V = 695.49$ (4) Å³
 $Z = 1$
 Mo $K\alpha$ radiation
 $\mu = 0.85$ mm⁻¹
 $T = 100$ K
 $0.32 \times 0.28 \times 0.14$ mm

Data collection

Bruker Kappa APEXII CCD area-detector diffractometer
 Absorption correction: multi-scan (SADABS; Bruker, 2005)
 $T_{min} = 0.762$, $T_{max} = 0.888$
 12850 measured reflections
 3482 independent reflections
 3325 reflections with $I > 2\sigma(I)$
 $R_{int} = 0.025$

Refinement

$R[F^2 > 2\sigma(F^2)] = 0.025$
 $wR(F^2) = 0.066$
 $S = 1.09$
 3482 reflections
 216 parameters
 H atoms treated by a mixture of independent and constrained refinement
 $\Delta\rho_{max} = 0.40$ e Å⁻³
 $\Delta\rho_{min} = -0.39$ e Å⁻³

Table 1

Selected bond lengths (Å).

Cu1—O1	1.9960 (9)	Cu1—N1	2.0025 (11)
Cu1—O5	2.3951 (10)		

Table 2

Hydrogen-bond geometry (Å, °).

Cg is the centroid of the pyridine ring.

$D-H \cdots A$	$D-H$	$H \cdots A$	$D \cdots A$	$D-H \cdots A$
N2—H21 ⁱ ···O2 ⁱ	0.85 (2)	2.100 (19)	2.8675 (16)	150 (2)
N2—H22 ⁱⁱ ···O4 ⁱⁱ	0.88 (2)	2.00 (2)	2.8685 (17)	169 (2)
O5—H51 ⁱⁱⁱ ···O4 ⁱⁱⁱ	0.81 (2)	2.11 (2)	2.8930 (15)	162 (2)
O5—H52 ^{iv} ···O2 ^{iv}	0.87 (3)	1.91 (3)	2.7542 (15)	163 (2)
C4—H4 ^v ···O2 ^v	0.93	2.46	3.3824 (18)	175
C13—H13 ^v ···O3 ^v	0.93	2.49	3.290 (2)	144
C6—H6 ^{vi} ···Cg ^{vi}	0.93	2.75	3.656 (2)	166

Symmetry codes: (i) $x, y, z - 1$; (ii) $-x - 1, -y, -z - 1$; (iii) $x + 1, y, z$; (iv) $-x, -y, -z$; (v) $-x + 1, -y + 1, -z$; (vi) $-x, -y + 1, -z + 2$.

Data collection: *APEX2* (Bruker, 2007); cell refinement: *SAINT* (Bruker, 2007); data reduction: *SAINT*; program(s) used to solve structure: *SHELXS97* (Sheldrick, 2008); program(s) used to refine structure: *SHELXL97* (Sheldrick, 2008); molecular graphics: *ORTEP-3 for Windows* (Farrugia, 1997); software used to prepare material for publication: *WinGX* (Farrugia, 1999) and *PLATON* (Spek, 2009).

The authors are indebted to Anadolu University and the Medicinal Plants and Medicine Research Centre of Anadolu University, Eskişehir, Turkey, for the use of X-ray diffractometer. This work was supported financially by Kafkas University Research Fund (grant No. 2012-FEF-12).

Supplementary data and figures for this paper are available from the IUCr electronic archives (Reference: XU5579).

References

- Allen, F. H., Kennard, O., Watson, D. G., Brammer, L., Orpen, A. G. & Taylor, R. (1987). *J. Chem. Soc. Perkin Trans. 2*, pp. S1–19.
- Aydın, Ö., Çaylak Delibaş, N., Necefoğlu, H. & Hökelek, T. (2012). *Acta Cryst. E68*, m521–m522.
- Bigoli, F., Braibanti, A., Pellinghelli, M. A. & Tiripicchio, A. (1972). *Acta Cryst. B28*, 962–966.
- Bruker (2005). *SADABS*. Bruker AXS Inc. Madison, Wisconsin, USA.
- Bruker (2007). *APEX2* and *SAINT*. Bruker AXS Inc. Madison, Wisconsin, USA.
- Farrugia, L. J. (1997). *J. Appl. Cryst.* **30**, 565.
- Farrugia, L. J. (1999). *J. Appl. Cryst.* **32**, 837–838.
- Hökelek, T., Dal, H., Tercan, B., Özbek, F. E. & Necefoğlu, H. (2009a). *Acta Cryst. E65*, m466–m467.
- Hökelek, T., Dal, H., Tercan, B., Özbek, F. E. & Necefoğlu, H. (2009b). *Acta Cryst. E65*, m607–m608.
- Hökelek, T., Gündüz, H. & Necefoğlu, H. (1996). *Acta Cryst. C52*, 2470–2473.
- Hökelek, T. & Necefoğlu, H. (1998). *Acta Cryst. C54*, 1242–1244.
- Hökelek, T. & Necefoğlu, H. (2007). *Acta Cryst. E63*, m821–m823.
- Krishnamachari, K. A. V. R. (1974). *Am. J. Clin. Nutr.* **27**, 108–111.
- Necefoğlu, H., Maracı, A., Özbek, F. E., Tercan, B. & Hökelek, T. (2011b). *Acta Cryst. E67*, m619–m620.
- Necefoğlu, H., Özbek, F. E., Öztürk, V., Tercan, B. & Hökelek, T. (2011a). *Acta Cryst. E67*, m900–m901.
- Sertçelik, M., Çaylak Delibaş, N., Necefoğlu, H. & Hökelek, T. (2012). *Acta Cryst. E68*, m946–m947.
- Sheldrick, G. M. (2008). *Acta Cryst. A64*, 112–122.
- Spek, A. L. (2009). *Acta Cryst. D65*, 148–155.

supporting information

Acta Cryst. (2012). E68, m1010–m1011 [https://doi.org/10.1107/S1600536812028814]

Diaquabis(4-formylbenzoato- κ O¹)bis(nicotinamide- κ N¹)copper(II)**Mustafa Sertçelik, Nagihan Çaylak Delibaş, Hacali Necefoğlu and Tuncer Hökelek****S1. Comment**

As a part of our ongoing investigations of transition metal complexes of nicotinamide (NA), one form of niacin (Krishnamachari, 1974), and/or the nicotinic acid derivative *N,N*-diethylnicotinamide (DNA), an important respiratory stimulant (Bigoli *et al.*, 1972), the title compound was synthesized and its crystal structure is reported herein.

In the title mononuclear complex, Cu^{II} cation is located on an inversion center and is coordinated by two 4-formylbenzoate (FB) anions, two nicotinamide (NA) ligands and two water molecules, all ligands coordinating in a monodentate manner (Fig. 1). The crystal structures of similar complexes of Cu^{II}, Co^{II}, Ni^{II}, Mn^{II} and Zn^{II} ions, [Cu(C₇H₅O₂)₂(C₁₀H₁₄N₂O₂)₂] (Hökelek *et al.*, 1996), [Cu(C₇H₄BrO₂)₂(C₆H₆N₂O₂)₂(H₂O)₂] (Necefoğlu *et al.*, 2011a), [Co(C₆H₆N₂O₂)₂(C₇H₄NO₄)₂(H₂O)₂] (Hökelek & Necefoğlu, 1998), [Co(C₉H₉O₂)₂(C₁₀H₁₄N₂O₂)₂(H₂O)₂] (Necefoğlu *et al.*, 2011b), [Co(C₇H₄IO₂)₂(C₆H₆N₂O₂)₂(H₂O)₂] (Aydın *et al.*, 2012), [Ni(C₇H₄ClO₂)₂(C₆H₆N₂O₂)₂(H₂O)₂] (Hökelek *et al.*, 2009a), [Ni(C₅H₅O₃)₂(C₆H₆N₂O₂)₂(H₂O)₂] (Sertçelik *et al.*, 2012), [Mn(C₉H₁₀NO₂)₂(H₂O)₄].2H₂O (Hökelek & Necefoğlu, 2007) and [Zn(C₇H₄BrO₂)₂(C₆H₆N₂O₂)₂(H₂O)₂] (Hökelek *et al.*, 2009b) have also been reported. In the copper(II) complex mentioned above the two benzoate ions coordinate to the Cu^{II} atom as bidentate ligands, while in the other structures all the ligands coordinate in a monodentate manner.

In the title complex, the four symmetry related O atoms (O1, O1', O5 and O5') in the equatorial plane around the Cu^{II} ion form a slightly distorted square-planar arrangement, while the slightly distorted octahedral coordination is completed by the two symmetry related N atoms of the NA ligands (N1 and N1') in the axial positions. The near equalities of the C1—O1 [1.2689 (16) Å] and C1—O2 [1.2512 (16) Å] bonds in the carboxylate group indicate delocalized bonding arrangement, rather than localized single and double bonds. The Cu—O bond lengths are 1.9960 (9) Å (for benzoate oxygens) and 2.3951 (10) Å (for water oxygens), and the Cu—N bond length is 2.0025 (11) Å, close to standard values (Allen *et al.*, 1987). The Cu atom is displaced out of the mean-plane of the carboxylate group (O1/C1/O2) by -0.5747 (1) Å. The dihedral angle between the planar carboxylate group and the adjacent benzene ring A (C2—C7) is 23.00 (10)°. The benzene A (C2—C7) and the pyridine B (N1/C9—C13) rings are oriented at a dihedral angle of A/B = 85.34 (4)°. The coordinating water molecule links with the carboxylate group *via* an O—H...O hydrogen bond (Table 1).

In the crystal, intermolecular N—H...O, O—H...O and weak C—H...O hydrogen bonds (Table 1) link the molecules into a three-dimensional supramolecular network, in which they may be effective in the stabilization of the structure. A weak C—H... π interaction also occurs.

S2. Experimental

The title compound was prepared by the reaction of CuSO₄·5H₂O (1.25 g, 5 mmol) in H₂O (200 ml) and NA (1.22 g, 10 mmol) in H₂O (100 ml) with sodium 4-formylbenzoate (1.72 g, 10 mmol) in H₂O (100 ml) at room temperature. The mixture was filtered and set aside to crystallize at ambient temperature for several days, giving blue single crystals.

S3. Refinement

Atoms H8 (for CH), H21 and H22 (for NH₂) and H51 and H52 (for H₂O) were located in a difference Fourier map and were refined freely. The C-bound H-atoms were positioned geometrically with C—H = 0.93 Å for aromatic H-atoms, and constrained to ride on their parent atoms, with $U_{\text{iso}}(\text{H}) = 1.2 \times U_{\text{eq}}(\text{C})$.

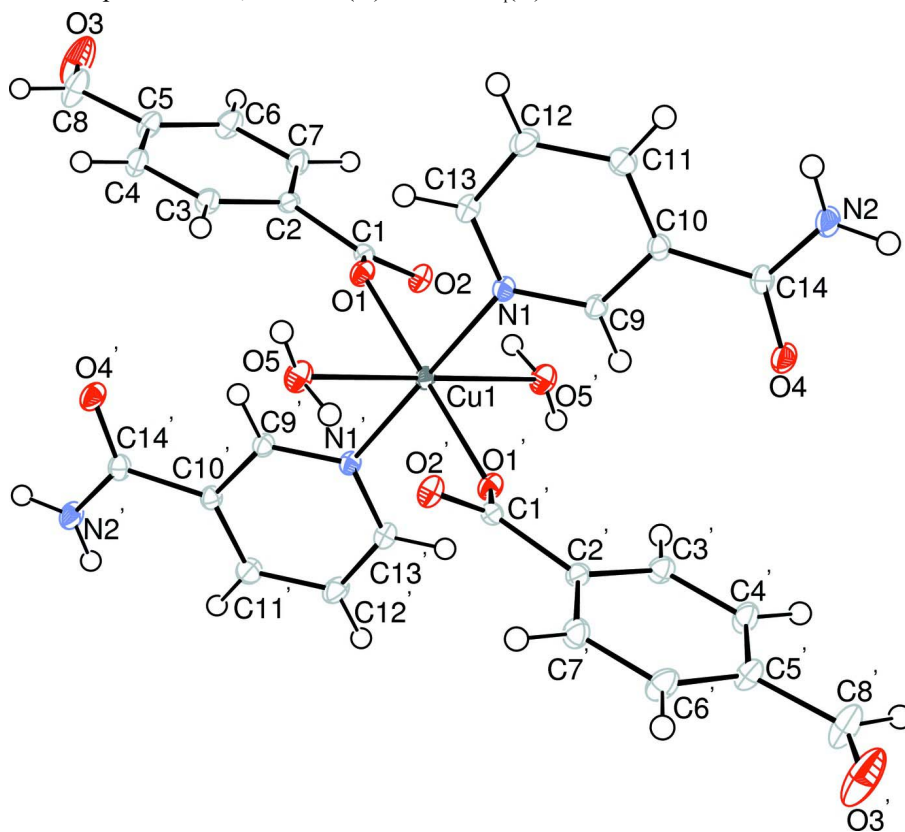


Figure 1

The molecular structure of the title molecule with the atom-numbering scheme. Displacement ellipsoids are drawn at the 50% probability level [symmetry code: (') -x, -y, -z].

Diaquabis(4-formylbenzoato- κO^1)bis(nicotinamide- κN^1)copper(II)

Crystal data

$[\text{Cu}(\text{C}_8\text{H}_5\text{O}_3)_2(\text{C}_6\text{H}_6\text{N}_2\text{O})_2(\text{H}_2\text{O})_2]$

$M_r = 642.08$

Triclinic, $P\bar{1}$

Hall symbol: -P 1

$a = 7.8175$ (2) Å

$b = 9.6539$ (3) Å

$c = 9.8361$ (3) Å

$\alpha = 77.053$ (3)°

$\beta = 74.041$ (2)°

$\gamma = 87.295$ (3)°

$V = 695.49$ (4) Å³

$Z = 1$

$F(000) = 331$

$D_x = 1.533$ Mg m⁻³

Mo $K\alpha$ radiation, $\lambda = 0.71073$ Å

Cell parameters from 8185 reflections

$\theta = 2.7\text{--}28.4^\circ$

$\mu = 0.85$ mm⁻¹

$T = 100$ K

Block, blue

$0.32 \times 0.28 \times 0.14$ mm

Data collection

Bruker Kappa APEXII CCD area-detector
diffractometer
Radiation source: fine-focus sealed tube
Graphite monochromator
 φ and ω scans
Absorption correction: multi-scan
(SADABS; Bruker, 2005)
 $T_{\min} = 0.762$, $T_{\max} = 0.888$

12850 measured reflections
3482 independent reflections
3325 reflections with $I > 2\sigma(I)$
 $R_{\text{int}} = 0.025$
 $\theta_{\text{max}} = 28.4^\circ$, $\theta_{\text{min}} = 2.2^\circ$
 $h = -10 \rightarrow 9$
 $k = -12 \rightarrow 12$
 $l = -13 \rightarrow 13$

Refinement

Refinement on F^2
Least-squares matrix: full
 $R[F^2 > 2\sigma(F^2)] = 0.025$
 $wR(F^2) = 0.066$
 $S = 1.09$
3482 reflections
216 parameters
0 restraints
Primary atom site location: structure-invariant
direct methods

Secondary atom site location: difference Fourier
map
Hydrogen site location: inferred from
neighbouring sites
H atoms treated by a mixture of independent
and constrained refinement
 $w = 1/[\sigma^2(F_o^2) + (0.0239P)^2 + 0.4466P]$
where $P = (F_o^2 + 2F_c^2)/3$
 $(\Delta/\sigma)_{\text{max}} < 0.001$
 $\Delta\rho_{\text{max}} = 0.40 \text{ e } \text{\AA}^{-3}$
 $\Delta\rho_{\text{min}} = -0.39 \text{ e } \text{\AA}^{-3}$

Special details

Geometry. All esds (except the esd in the dihedral angle between two l.s. planes) are estimated using the full covariance matrix. The cell esds are taken into account individually in the estimation of esds in distances, angles and torsion angles; correlations between esds in cell parameters are only used when they are defined by crystal symmetry. An approximate (isotropic) treatment of cell esds is used for estimating esds involving l.s. planes.

Refinement. Refinement of F^2 against ALL reflections. The weighted R-factor wR and goodness of fit S are based on F^2 , conventional R-factors R are based on F , with F set to zero for negative F^2 . The threshold expression of $F^2 > 2\sigma(F^2)$ is used only for calculating R-factors(gt) etc. and is not relevant to the choice of reflections for refinement. R-factors based on F^2 are statistically about twice as large as those based on F , and R-factors based on ALL data will be even larger.

Fractional atomic coordinates and isotropic or equivalent isotropic displacement parameters (\AA^2)

	<i>x</i>	<i>y</i>	<i>z</i>	$U_{\text{iso}}^*/U_{\text{eq}}$
Cu1	0.0000	0.0000	0.0000	0.01041 (7)
O1	0.11157 (12)	0.17792 (10)	0.00993 (10)	0.01370 (18)
O2	-0.11627 (12)	0.27371 (10)	0.15230 (11)	0.0162 (2)
O3	0.49068 (16)	0.66970 (15)	0.32698 (17)	0.0416 (4)
O4	-0.42482 (13)	-0.00030 (11)	-0.33929 (11)	0.0183 (2)
O5	0.29806 (13)	-0.08287 (11)	-0.07100 (11)	0.0174 (2)
H51	0.377 (3)	-0.044 (2)	-0.139 (2)	0.031 (5)*
H52	0.261 (3)	-0.152 (3)	-0.099 (3)	0.045 (6)*
N1	-0.00062 (14)	0.08754 (11)	-0.20468 (12)	0.0117 (2)
N2	-0.32207 (17)	0.13253 (14)	-0.56511 (13)	0.0173 (2)
H21	-0.241 (3)	0.185 (2)	-0.629 (2)	0.024 (5)*
H22	-0.409 (3)	0.102 (2)	-0.592 (2)	0.034 (5)*
C1	0.04545 (17)	0.26238 (13)	0.09204 (14)	0.0119 (2)
C2	0.17587 (17)	0.35192 (13)	0.12491 (14)	0.0119 (2)
C3	0.35050 (17)	0.30847 (14)	0.11108 (15)	0.0146 (2)

H3	0.3910	0.2305	0.0710	0.018*
C4	0.46457 (18)	0.38186 (15)	0.15737 (16)	0.0171 (3)
H4	0.5811	0.3522	0.1494	0.021*
C5	0.40476 (18)	0.49929 (15)	0.21546 (16)	0.0172 (3)
C6	0.23127 (18)	0.54629 (15)	0.22500 (16)	0.0187 (3)
H6	0.1925	0.6268	0.2612	0.022*
C7	0.11731 (18)	0.47245 (14)	0.18029 (15)	0.0161 (3)
H7	0.0013	0.5030	0.1871	0.019*
C8	0.5289 (2)	0.57274 (18)	0.26668 (19)	0.0270 (3)
H8	0.651 (3)	0.5350 (19)	0.252 (2)	0.024 (5)*
C9	-0.14085 (17)	0.06582 (13)	-0.25139 (14)	0.0120 (2)
H9	-0.2365	0.0117	-0.1864	0.014*
C10	-0.14972 (17)	0.12042 (13)	-0.39217 (14)	0.0121 (2)
C11	-0.00706 (18)	0.20287 (15)	-0.48827 (15)	0.0166 (3)
H11	-0.0085	0.2413	-0.5835	0.020*
C12	0.13731 (18)	0.22679 (15)	-0.43983 (15)	0.0178 (3)
H12	0.2335	0.2823	-0.5020	0.021*
C13	0.13671 (17)	0.16727 (14)	-0.29819 (15)	0.0144 (2)
H13	0.2344	0.1828	-0.2665	0.017*
C14	-0.31061 (17)	0.08129 (14)	-0.43099 (14)	0.0137 (2)

Atomic displacement parameters (Å²)

	U^{11}	U^{22}	U^{33}	U^{12}	U^{13}	U^{23}
Cu1	0.01132 (11)	0.01179 (11)	0.00973 (11)	-0.00110 (8)	-0.00490 (8)	-0.00287 (8)
O1	0.0137 (4)	0.0152 (4)	0.0136 (4)	-0.0023 (3)	-0.0042 (3)	-0.0049 (4)
O2	0.0112 (4)	0.0197 (5)	0.0182 (5)	-0.0017 (4)	-0.0034 (4)	-0.0059 (4)
O3	0.0244 (6)	0.0474 (8)	0.0666 (10)	-0.0024 (5)	-0.0109 (6)	-0.0415 (7)
O4	0.0175 (5)	0.0246 (5)	0.0135 (5)	-0.0075 (4)	-0.0063 (4)	-0.0014 (4)
O5	0.0135 (5)	0.0208 (5)	0.0182 (5)	-0.0008 (4)	-0.0026 (4)	-0.0066 (4)
N1	0.0113 (5)	0.0128 (5)	0.0120 (5)	-0.0008 (4)	-0.0039 (4)	-0.0034 (4)
N2	0.0172 (6)	0.0236 (6)	0.0122 (6)	-0.0057 (5)	-0.0068 (4)	-0.0017 (5)
C1	0.0134 (6)	0.0119 (6)	0.0108 (6)	-0.0016 (4)	-0.0056 (4)	0.0001 (4)
C2	0.0126 (6)	0.0120 (6)	0.0109 (6)	-0.0022 (4)	-0.0035 (4)	-0.0014 (4)
C3	0.0139 (6)	0.0129 (6)	0.0180 (6)	0.0005 (5)	-0.0043 (5)	-0.0057 (5)
C4	0.0114 (6)	0.0179 (6)	0.0236 (7)	0.0001 (5)	-0.0058 (5)	-0.0067 (5)
C5	0.0144 (6)	0.0176 (6)	0.0215 (7)	-0.0033 (5)	-0.0049 (5)	-0.0072 (5)
C6	0.0163 (6)	0.0155 (6)	0.0264 (7)	-0.0004 (5)	-0.0041 (5)	-0.0109 (5)
C7	0.0120 (6)	0.0156 (6)	0.0217 (7)	0.0016 (5)	-0.0051 (5)	-0.0056 (5)
C8	0.0162 (7)	0.0316 (8)	0.0393 (9)	-0.0031 (6)	-0.0078 (6)	-0.0194 (7)
C9	0.0116 (5)	0.0131 (6)	0.0120 (6)	-0.0011 (4)	-0.0038 (4)	-0.0031 (5)
C10	0.0129 (6)	0.0130 (6)	0.0120 (6)	0.0001 (4)	-0.0049 (5)	-0.0041 (5)
C11	0.0184 (6)	0.0198 (6)	0.0110 (6)	-0.0030 (5)	-0.0044 (5)	-0.0011 (5)
C12	0.0149 (6)	0.0213 (7)	0.0154 (6)	-0.0060 (5)	-0.0018 (5)	-0.0015 (5)
C13	0.0121 (6)	0.0162 (6)	0.0160 (6)	-0.0016 (5)	-0.0044 (5)	-0.0048 (5)
C14	0.0143 (6)	0.0156 (6)	0.0134 (6)	0.0001 (5)	-0.0058 (5)	-0.0054 (5)

Geometric parameters (Å, °)

Cu1—O1	1.9960 (9)	C3—H3	0.9300
Cu1—O1 ⁱ	1.9960 (9)	C4—C5	1.3869 (19)
Cu1—O5	2.3951 (10)	C4—H4	0.9300
Cu1—O5 ⁱ	2.3951 (10)	C5—C8	1.4807 (19)
Cu1—N1	2.0025 (11)	C6—C5	1.3947 (19)
Cu1—N1 ⁱ	2.0025 (11)	C6—H6	0.9300
O1—C1	1.2689 (16)	C7—C2	1.3989 (18)
O2—C1	1.2512 (16)	C7—C6	1.3824 (19)
O3—C8	1.201 (2)	C7—H7	0.9300
O4—C14	1.2395 (16)	C8—H8	0.990 (19)
O5—H51	0.80 (2)	C9—H9	0.9300
O5—H52	0.87 (2)	C10—C9	1.3864 (18)
N1—C9	1.3411 (16)	C10—C11	1.3921 (18)
N1—C13	1.3449 (16)	C10—C14	1.4981 (17)
N2—C14	1.3272 (17)	C11—C12	1.3870 (19)
N2—H21	0.85 (2)	C11—H11	0.9300
N2—H22	0.87 (2)	C12—H12	0.9300
C1—C2	1.5103 (17)	C13—C12	1.3816 (19)
C3—C2	1.3883 (18)	C13—H13	0.9300
C3—C4	1.3899 (18)		
O1—Cu1—O1 ⁱ	180.00 (5)	C3—C4—H4	120.0
O1—Cu1—O5	85.74 (4)	C5—C4—C3	120.09 (12)
O1 ⁱ —Cu1—O5	94.26 (4)	C5—C4—H4	120.0
O1—Cu1—O5 ⁱ	94.26 (4)	C4—C5—C6	120.31 (12)
O1 ⁱ —Cu1—O5 ⁱ	85.74 (4)	C4—C5—C8	118.53 (13)
O1—Cu1—N1	89.34 (4)	C6—C5—C8	121.16 (13)
O1 ⁱ —Cu1—N1	90.66 (4)	C5—C6—H6	120.2
O1—Cu1—N1 ⁱ	90.66 (4)	C7—C6—C5	119.57 (12)
O1 ⁱ —Cu1—N1 ⁱ	89.34 (4)	C7—C6—H6	120.2
O5 ⁱ —Cu1—O5	180.00 (2)	C2—C7—H7	119.9
N1—Cu1—O5	92.97 (4)	C6—C7—C2	120.25 (12)
N1 ⁱ —Cu1—O5	87.03 (4)	C6—C7—H7	119.9
N1—Cu1—O5 ⁱ	87.03 (4)	O3—C8—C5	125.09 (15)
N1 ⁱ —Cu1—O5 ⁱ	92.97 (4)	O3—C8—H8	118.9 (11)
N1 ⁱ —Cu1—N1	180.0	C5—C8—H8	116.0 (11)
C1—O1—Cu1	127.13 (8)	N1—C9—C10	122.97 (12)
Cu1—O5—H51	126.3 (15)	N1—C9—H9	118.5
Cu1—O5—H52	90.8 (15)	C10—C9—H9	118.5
H51—O5—H52	105 (2)	C9—C10—C11	118.17 (12)
C9—N1—Cu1	119.55 (9)	C9—C10—C14	117.06 (11)
C9—N1—C13	118.50 (11)	C11—C10—C14	124.72 (12)
C13—N1—Cu1	121.95 (9)	C10—C11—H11	120.5
C14—N2—H21	122.1 (13)	C12—C11—C10	118.98 (12)
C14—N2—H22	118.5 (14)	C12—C11—H11	120.5
H21—N2—H22	118.9 (19)	C11—C12—H12	120.4

O1—C1—C2	116.43 (11)	C13—C12—C11	119.29 (12)
O2—C1—O1	126.00 (12)	C13—C12—H12	120.4
O2—C1—C2	117.50 (11)	N1—C13—C12	122.08 (12)
C3—C2—C1	119.97 (11)	N1—C13—H13	119.0
C3—C2—C7	119.90 (12)	C12—C13—H13	119.0
C7—C2—C1	119.93 (11)	O4—C14—N2	122.45 (12)
C2—C3—C4	119.81 (12)	O4—C14—C10	119.40 (12)
C2—C3—H3	120.1	N2—C14—C10	118.11 (12)
C4—C3—H3	120.1		
O5—Cu1—O1—C1	-150.51 (11)	C4—C3—C2—C1	-172.50 (12)
O5 ⁱ —Cu1—O1—C1	29.49 (11)	C4—C3—C2—C7	2.4 (2)
N1—Cu1—O1—C1	116.46 (11)	C2—C3—C4—C5	-0.8 (2)
N1 ⁱ —Cu1—O1—C1	-63.54 (11)	C3—C4—C5—C6	-1.4 (2)
O1—Cu1—N1—C9	-140.43 (10)	C3—C4—C5—C8	178.62 (14)
O1 ⁱ —Cu1—N1—C9	39.57 (10)	C4—C5—C8—O3	-175.17 (18)
O1—Cu1—N1—C13	40.10 (10)	C6—C5—C8—O3	4.8 (3)
O1 ⁱ —Cu1—N1—C13	-139.90 (10)	C7—C6—C5—C4	2.0 (2)
O5—Cu1—N1—C9	133.87 (10)	C7—C6—C5—C8	-177.98 (14)
O5 ⁱ —Cu1—N1—C9	-46.13 (10)	C6—C7—C2—C1	173.14 (13)
O5—Cu1—N1—C13	-45.60 (10)	C6—C7—C2—C3	-1.8 (2)
O5 ⁱ —Cu1—N1—C13	134.40 (10)	C2—C7—C6—C5	-0.4 (2)
Cu1—O1—C1—O2	-21.17 (19)	C11—C10—C9—N1	-0.81 (19)
Cu1—O1—C1—C2	155.74 (8)	C14—C10—C9—N1	176.96 (11)
Cu1—N1—C9—C10	-178.70 (9)	C9—C10—C11—C12	0.1 (2)
C13—N1—C9—C10	0.79 (19)	C14—C10—C11—C12	-177.50 (12)
Cu1—N1—C13—C12	179.43 (10)	C9—C10—C14—O4	-2.22 (18)
C9—N1—C13—C12	-0.05 (19)	C9—C10—C14—N2	179.90 (12)
O1—C1—C2—C3	-22.27 (18)	C11—C10—C14—O4	175.39 (13)
O1—C1—C2—C7	162.83 (12)	C11—C10—C14—N2	-2.5 (2)
O2—C1—C2—C3	154.91 (12)	C10—C11—C12—C13	0.6 (2)
O2—C1—C2—C7	-19.98 (18)	N1—C13—C12—C11	-0.6 (2)

Symmetry code: (i) $-x, -y, -z$.

Hydrogen-bond geometry ($\text{\AA}, ^\circ$)

Cg is the centroid of the pyridine ring.

$D-H\cdots A$	$D-H$	$H\cdots A$	$D\cdots A$	$D-H\cdots A$
N2—H21 \cdots O2 ⁱⁱ	0.85 (2)	2.100 (19)	2.8675 (16)	150 (2)
N2—H22 \cdots O4 ⁱⁱⁱ	0.88 (2)	2.00 (2)	2.8685 (17)	169 (2)
O5—H51 \cdots O4 ^{iv}	0.81 (2)	2.11 (2)	2.8930 (15)	162 (2)
O5—H52 \cdots O2 ⁱ	0.87 (3)	1.91 (3)	2.7542 (15)	163 (2)
C4—H4 \cdots O2 ^{iv}	0.93	2.46	3.3824 (18)	175
C13—H13 \cdots O3 ^v	0.93	2.49	3.290 (2)	144
C6—H6 \cdots Cg ^{vi}	0.93	2.75	3.656 (2)	166

Symmetry codes: (i) $-x, -y, -z$; (ii) $x, y, z-1$; (iii) $-x-1, -y, -z-1$; (iv) $x+1, y, z$; (v) $-x+1, -y+1, -z$; (vi) $-x, -y+1, -z+2$.