

Acta Crystallographica Section E

Structure Reports

Online

ISSN 1600-5368

(2E)-1-(4,4''-Difluoro-5'-methoxy-1,1':3',1''-terphenyl-4'-yl)-3-(2-fluorophenyl)prop-2-en-1-one

Hoong-Kun Fun,^{a,*} Wan-Sin Loh,^{a,§} S. Samshuddin,^b
B. Narayana^b and B. K. Sarojini^c

^aX-ray Crystallography Unit, School of Physics, Universiti Sains Malaysia, 11800 USM, Penang, Malaysia, ^bDepartment of Studies in Chemistry, Mangalore University, Mangalagangotri 574 199, India, and ^cDepartment of Chemistry, P.A. College of Engineering, Nadupadavu, Mangalore 574 153, India
Correspondence e-mail: hkfun@usm.my

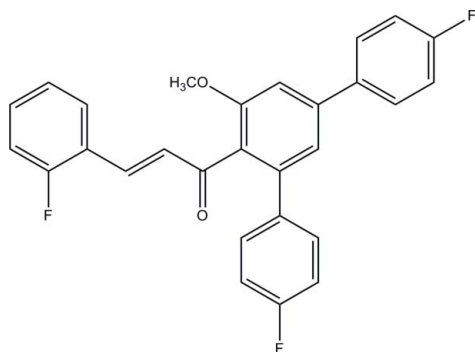
Received 28 May 2012; accepted 1 June 2012

Key indicators: single-crystal X-ray study; $T = 100$ K; mean $\sigma(\text{C}-\text{C}) = 0.002$ Å; R factor = 0.058; wR factor = 0.140; data-to-parameter ratio = 25.0.

In the title compound, $\text{C}_{28}\text{H}_{19}\text{F}_3\text{O}_2$, the central benzene ring forms dihedral angles of 48.69 (6), 60.93 (6) and 42.06 (6) $^\circ$ with the fluorobenzene rings. In the crystal, intermolecular $\text{C}-\text{H}\cdots\text{O}$ and $\text{C}-\text{H}\cdots\text{F}$ hydrogen bonds link the molecules, forming an undulating two-dimensional network parallel to the bc plane. $\text{C}-\text{H}\cdots\pi$ interactions further consolidate the crystal packing.

Related literature

For background to terphenyl chalcones, see: Fun *et al.* (2011); Fun, Hemamalini *et al.* (2012). For a related structure, see: Fun, Loh *et al.* (2012). For the stability of the temperature controller used in the data collection, see: Cosier & Glazer (1986).



Experimental

Crystal data

 $\text{C}_{28}\text{H}_{19}\text{F}_3\text{O}_2$ $M_r = 444.43$

* Thomson Reuters ResearcherID: A-3561-2009.

§ Thomson Reuters ResearcherID: C-7581-2009.

Monoclinic, $P2_1/c$
 $a = 13.7592$ (1) Å
 $b = 6.7898$ (1) Å
 $c = 22.4361$ (3) Å
 $\beta = 101.908$ (1) $^\circ$
 $V = 2050.92$ (4) Å³

$Z = 4$
Mo $K\alpha$ radiation
 $\mu = 0.11$ mm⁻¹
 $T = 100$ K
 $0.32 \times 0.24 \times 0.12$ mm

Data collection

Bruker SMART APEXII CCD
area-detector diffractometer
Absorption correction: multi-scan
(SADABS; Bruker, 2009)
 $T_{\min} = 0.966$, $T_{\max} = 0.987$

28707 measured reflections
7478 independent reflections
5317 reflections with $I > 2\sigma(I)$
 $R_{\text{int}} = 0.041$

Refinement

$R[F^2 > 2\sigma(F^2)] = 0.058$
 $wR(F^2) = 0.140$
 $S = 1.03$
7478 reflections

299 parameters
H-atom parameters constrained
 $\Delta\rho_{\text{max}} = 0.53$ e Å⁻³
 $\Delta\rho_{\text{min}} = -0.26$ e Å⁻³

Table 1

Hydrogen-bond geometry (Å, $^\circ$).

Cg1 is the centroid of the C7–C12 ring.

$D-H\cdots A$	$D-H$	$H\cdots A$	$D\cdots A$	$D-H\cdots A$
C4–H4A \cdots O2 ⁱ	0.95	2.40	3.3008 (18)	158
C19–H19A \cdots F2 ⁱⁱ	0.95	2.54	3.2326 (18)	130
C24–H24A \cdots Cg1 ⁱⁱⁱ	0.95	2.84	3.4579 (15)	124
C28–H28C \cdots Cg1 ^{iv}	0.98	2.86	3.5461 (16)	128

Symmetry codes: (i) $x, -y + \frac{1}{2}, z + \frac{1}{2}$; (ii) $-x + 1, y - \frac{3}{2}, -z + \frac{3}{2}$; (iii) $x, y + 1, z$; (iv) $-x + 2, -y, -z + 2$.

Data collection: APEX2 (Bruker, 2009); cell refinement: SAINT (Bruker, 2009); data reduction: SAINT; program(s) used to solve structure: SHELXTL (Sheldrick, 2008); program(s) used to refine structure: SHELXTL; molecular graphics: SHELXTL; software used to prepare material for publication: SHELXTL and PLATON (Spek, 2009).

HKF and WSL thank Universiti Sains Malaysia (USM) for the Research University Grant (1001/PFIZIK/811160). WSL also thanks the Malaysian Government and USM for the award of the post of Research Officer under the Research University Grant (1001/PFIZIK/811160). BN thanks the UGC for financial assistance through the SAP and BSR one-time grant for the purchase of chemicals. SS thanks Mangalore University for the research facilities.

Supplementary data and figures for this paper are available from the IUCr electronic archives (Reference: IS5146).

References

- Bruker (2009). APEX2, SAINT and SADABS. Bruker AXS Inc., Madison, Wisconsin, USA.
Cosier, J. & Glazer, A. M. (1986). *J. Appl. Cryst.* **19**, 105–107.
Fun, H.-K., Hemamalini, M., Samshuddin, S., Narayana, B. & Sarojini, B. K. (2011). *Acta Cryst.* **E67**, o3327–o3328.
Fun, H.-K., Hemamalini, M., Samshuddin, S., Narayana, B. & Sarojini, B. K. (2012). *Acta Cryst.* **E68**, o163.
Fun, H.-K., Loh, W.-S., Samshuddin, S., Narayana, B. & Sarojini, B. K. (2012). *Acta Cryst.* **E68**, o1877–o1878.
Sheldrick, G. M. (2008). *Acta Cryst.* **A64**, 112–122.
Spek, A. L. (2009). *Acta Cryst.* **D65**, 148–155.

supporting information

Acta Cryst. (2012). E68, o2024 [https://doi.org/10.1107/S1600536812024981]

(2E)-1-(4,4''-Difluoro-5'-methoxy-1,1':3',1''-terphenyl-4'-yl)-3-(2-fluorophenyl)-prop-2-en-1-one

Hoong-Kun Fun, Wan-Sin Loh, S. Samshuddin, B. Narayana and B. K. Sarojini

S1. Comment

In continuation of our work on synthesis of terphenyl chalcones (Fun *et al.*, 2011), the title compound is prepared and its crystal structure is reported. The starting material of the title compound was prepared from 4,4'-difluoro chalcone by several steps (Fun, Hemamalini *et al.*, 2012).

In the title compound (Fig. 1), the central benzene ring (C7–C12) forms dihedral angles of 48.69 (6), 60.93 (6) and 42.06 (6)°, respectively, with the fluorobenzene rings C1–C6/F1, C16–C21/F3 and C22–C27/F2. Bond lengths and angles are within the normal ranges and are comparable with the related structure (Fun, Loh *et al.*, 2012).

In the crystal packing (Fig. 2), intermolecular C4—H4A···O2 and C19—H19A···F2 hydrogen bonds (Table 1) link the molecules to form undulating two-dimensional network parallel to the *bc* plane. C—H··· π interactions (Table 1), involving the central benzene ring, further consolidate the crystal packing.

S2. Experimental

To a mixture of 1-(4,4''-difluoro-5'-methoxy-1,1':3',1''-terphenyl-4'-yl) ethanone (0.338 g, 0.001 mol) and 2-fluorobenzaldehyde (0.124 g, 0.001 mol) in 30 ml ethanol, 0.5 ml of 10% sodium hydroxide solution was added and stirred at 5–10°C for 3 h. The precipitate formed was collected by filtration and purified by recrystallization from ethanol. The single-crystal was grown from methanol by slow evaporation method and yield of the compound was 74%. *M.p.*: 453 K.

S3. Refinement

All the H atoms were positioned geometrically and were refined with a riding model with $U_{\text{iso}}(\text{H}) = 1.2$ or $1.5 U_{\text{eq}}(\text{C})$ (C—H = 0.95 or 0.98 Å). A rotating group model was applied to the methyl group. In the final refinement, one outlier (-13 1 30) was omitted.

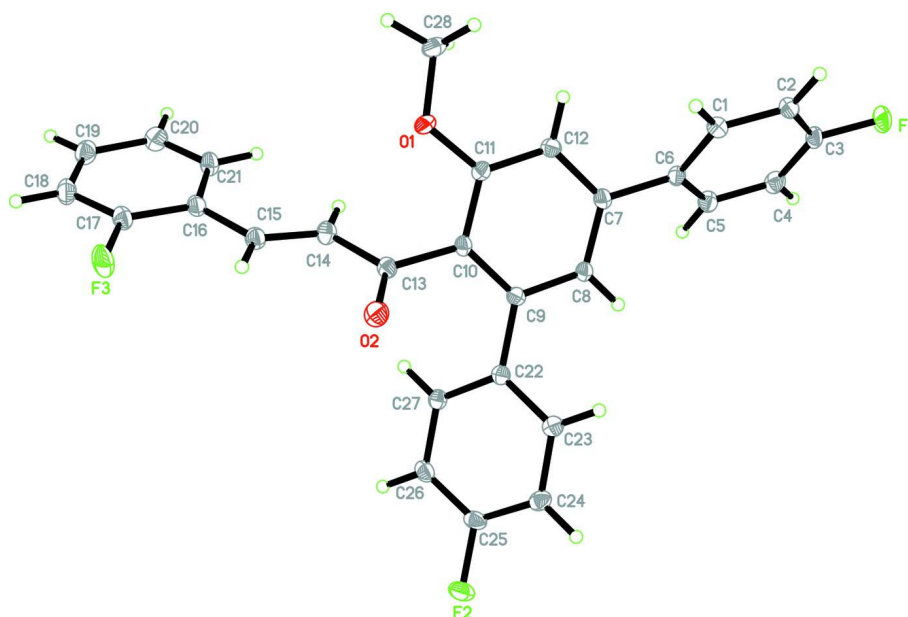


Figure 1

The molecular structure of the title compound, showing 50% probability displacement ellipsoids.

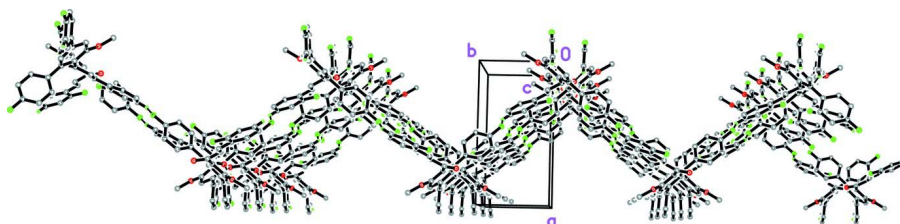


Figure 2

The crystal packing of the title compound, viewed along the *c* axis, showing the undulating two-dimensional network parallel to the *bc* plane. H atoms not involved in the intermolecular interactions (dashed lines) have been omitted for clarity.

(2*E*)-1-(4,4''-Difluoro-5'-methoxy-1,1':3',1''-terphenyl-4'-yl)-3-(2-fluorophenyl)prop-2-en-1-one

Crystal data

$C_{28}H_{19}F_3O_2$

$M_r = 444.43$

Monoclinic, $P2_1/c$

Hall symbol: $-P\ 2_1/c$

$a = 13.7592(1)\ \text{\AA}$

$b = 6.7898(1)\ \text{\AA}$

$c = 22.4361(3)\ \text{\AA}$

$\beta = 101.908(1)^\circ$

$V = 2050.92(4)\ \text{\AA}^3$

$Z = 4$

$F(000) = 920$

$D_x = 1.439\ \text{Mg m}^{-3}$

Mo $K\alpha$ radiation, $\lambda = 0.71073\ \text{\AA}$

Cell parameters from 6446 reflections

$\theta = 3.1\text{--}32.6^\circ$

$\mu = 0.11\ \text{mm}^{-1}$

$T = 100\ \text{K}$

Block, yellow

$0.32 \times 0.24 \times 0.12\ \text{mm}$

Data collection

Bruker SMART APEXII CCD area-detector
diffractometer

Radiation source: fine-focus sealed tube

Graphite monochromator

φ and ω scans

Absorption correction: multi-scan
(*SADABS*; Bruker, 2009)

$T_{\min} = 0.966$, $T_{\max} = 0.987$

28707 measured reflections

7478 independent reflections

5317 reflections with $I > 2\sigma(I)$

$R_{\text{int}} = 0.041$

$\theta_{\max} = 32.7^\circ$, $\theta_{\min} = 1.9^\circ$

$h = -20 \rightarrow 20$

$k = -10 \rightarrow 10$

$l = -34 \rightarrow 31$

Refinement

Refinement on F^2

Least-squares matrix: full

$R[F^2 > 2\sigma(F^2)] = 0.058$

$wR(F^2) = 0.140$

$S = 1.03$

7478 reflections

299 parameters

0 restraints

Primary atom site location: structure-invariant
direct methods

Secondary atom site location: difference Fourier
map

Hydrogen site location: inferred from
neighbouring sites

H-atom parameters constrained

$w = 1/[\sigma^2(F_o^2) + (0.0578P)^2 + 0.9821P]$

where $P = (F_o^2 + 2F_c^2)/3$

$(\Delta/\sigma)_{\max} = 0.001$

$\Delta\rho_{\max} = 0.53 \text{ e } \text{\AA}^{-3}$

$\Delta\rho_{\min} = -0.26 \text{ e } \text{\AA}^{-3}$

Special details

Experimental. The crystal was placed in the cold stream of an Oxford Cryosystems Cobra open-flow nitrogen cryostat (Cosier & Glazer, 1986) operating at 100.0 (1) K.

Geometry. All e.s.d.'s (except the e.s.d. in the dihedral angle between two l.s. planes) are estimated using the full covariance matrix. The cell e.s.d.'s are taken into account individually in the estimation of e.s.d.'s in distances, angles and torsion angles; correlations between e.s.d.'s in cell parameters are only used when they are defined by crystal symmetry. An approximate (isotropic) treatment of cell e.s.d.'s is used for estimating e.s.d.'s involving l.s. planes.

Refinement. Refinement of F^2 against ALL reflections. The weighted R -factor wR and goodness of fit S are based on F^2 , conventional R -factors R are based on F , with F set to zero for negative F^2 . The threshold expression of $F^2 > \sigma(F^2)$ is used only for calculating R -factors(gt) *etc.* and is not relevant to the choice of reflections for refinement. R -factors based on F^2 are statistically about twice as large as those based on F , and R -factors based on ALL data will be even larger.

Fractional atomic coordinates and isotropic or equivalent isotropic displacement parameters (\AA^2)

	<i>x</i>	<i>y</i>	<i>z</i>	$U_{\text{iso}}^*/U_{\text{eq}}$
F1	1.03222 (7)	0.04726 (14)	1.35190 (4)	0.0244 (2)
F2	0.49534 (7)	0.88570 (14)	0.94449 (4)	0.0250 (2)
F3	0.66995 (7)	0.00341 (15)	0.68457 (4)	0.0257 (2)
O1	0.88761 (8)	-0.12968 (16)	0.95428 (5)	0.0185 (2)
O2	0.77791 (8)	0.32186 (16)	0.88556 (5)	0.0206 (2)
C1	1.01130 (10)	0.0527 (2)	1.18851 (7)	0.0159 (3)
H1A	1.0529	0.0473	1.1596	0.019*
C2	1.05342 (11)	0.0473 (2)	1.25032 (7)	0.0173 (3)
H2A	1.1234	0.0407	1.2642	0.021*
C3	0.99095 (11)	0.0519 (2)	1.29097 (6)	0.0169 (3)
C4	0.88906 (11)	0.0613 (2)	1.27336 (7)	0.0183 (3)
H4A	0.8481	0.0613	1.3026	0.022*
C5	0.84821 (10)	0.0706 (2)	1.21143 (7)	0.0167 (3)
H5A	0.7782	0.0804	1.1982	0.020*

C6	0.90827 (10)	0.0659 (2)	1.16825 (6)	0.0138 (3)
C7	0.86489 (10)	0.0826 (2)	1.10200 (6)	0.0134 (2)
C8	0.79555 (9)	0.2298 (2)	1.08064 (6)	0.0131 (2)
H8A	0.7720	0.3111	1.1091	0.016*
C9	0.76002 (9)	0.2601 (2)	1.01833 (6)	0.0124 (2)
C10	0.79304 (9)	0.1352 (2)	0.97656 (6)	0.0125 (2)
C11	0.85927 (9)	-0.0180 (2)	0.99851 (6)	0.0131 (2)
C12	0.89648 (10)	-0.0432 (2)	1.06048 (6)	0.0141 (3)
H12A	0.9430	-0.1450	1.0745	0.017*
C13	0.76484 (9)	0.1637 (2)	0.90865 (6)	0.0140 (3)
C14	0.72077 (10)	-0.0086 (2)	0.87229 (6)	0.0167 (3)
H14A	0.7023	-0.1201	0.8930	0.020*
C15	0.70598 (10)	-0.0131 (2)	0.81141 (7)	0.0164 (3)
H15A	0.7247	0.0998	0.7914	0.020*
C16	0.66305 (10)	-0.1795 (2)	0.77340 (6)	0.0157 (3)
C17	0.64452 (10)	-0.1661 (2)	0.71015 (7)	0.0174 (3)
C18	0.60072 (11)	-0.3144 (2)	0.67147 (7)	0.0206 (3)
H18A	0.5895	-0.2983	0.6285	0.025*
C19	0.57362 (11)	-0.4870 (2)	0.69676 (7)	0.0212 (3)
H19A	0.5423	-0.5899	0.6711	0.025*
C20	0.59242 (11)	-0.5092 (2)	0.75979 (7)	0.0211 (3)
H20A	0.5748	-0.6281	0.7772	0.025*
C21	0.63683 (11)	-0.3579 (2)	0.79707 (7)	0.0188 (3)
H21A	0.6499	-0.3758	0.8400	0.023*
C22	0.68836 (9)	0.4236 (2)	0.99834 (6)	0.0125 (2)
C23	0.70360 (10)	0.6066 (2)	1.02758 (6)	0.0147 (3)
H23A	0.7592	0.6239	1.0602	0.018*
C24	0.63912 (10)	0.7636 (2)	1.00989 (7)	0.0160 (3)
H24A	0.6503	0.8879	1.0296	0.019*
C25	0.55861 (10)	0.7334 (2)	0.96299 (7)	0.0167 (3)
C26	0.53926 (10)	0.5546 (2)	0.93351 (6)	0.0163 (3)
H26A	0.4827	0.5381	0.9016	0.020*
C27	0.60454 (10)	0.3997 (2)	0.95175 (6)	0.0142 (3)
H27A	0.5920	0.2755	0.9322	0.017*
C28	0.93885 (11)	-0.3103 (2)	0.97216 (7)	0.0192 (3)
H28A	0.9470	-0.3832	0.9358	0.029*
H28B	0.9004	-0.3899	0.9955	0.029*
H28C	1.0043	-0.2817	0.9975	0.029*

Atomic displacement parameters (\AA^2)

	U^{11}	U^{22}	U^{33}	U^{12}	U^{13}	U^{23}
F1	0.0348 (5)	0.0252 (5)	0.0101 (4)	0.0019 (4)	-0.0027 (4)	0.0002 (3)
F2	0.0312 (5)	0.0224 (5)	0.0208 (5)	0.0136 (4)	0.0040 (4)	0.0047 (4)
F3	0.0358 (5)	0.0264 (5)	0.0141 (4)	-0.0069 (4)	0.0035 (4)	0.0046 (4)
O1	0.0242 (5)	0.0179 (5)	0.0140 (5)	0.0080 (4)	0.0051 (4)	-0.0017 (4)
O2	0.0292 (5)	0.0179 (5)	0.0163 (5)	-0.0003 (4)	0.0084 (4)	0.0024 (4)
C1	0.0160 (6)	0.0160 (6)	0.0153 (7)	0.0009 (5)	0.0023 (5)	0.0005 (5)

C2	0.0176 (6)	0.0156 (6)	0.0163 (7)	0.0012 (5)	-0.0018 (5)	-0.0002 (5)
C3	0.0255 (7)	0.0136 (6)	0.0097 (6)	0.0000 (5)	-0.0006 (5)	0.0004 (5)
C4	0.0237 (7)	0.0185 (7)	0.0139 (7)	0.0007 (5)	0.0066 (5)	0.0000 (5)
C5	0.0163 (6)	0.0182 (6)	0.0156 (7)	-0.0004 (5)	0.0034 (5)	-0.0013 (5)
C6	0.0162 (6)	0.0127 (6)	0.0116 (6)	-0.0003 (5)	0.0009 (5)	-0.0009 (5)
C7	0.0144 (6)	0.0139 (6)	0.0116 (6)	-0.0012 (5)	0.0019 (5)	0.0004 (5)
C8	0.0140 (5)	0.0147 (6)	0.0104 (6)	0.0008 (5)	0.0022 (5)	-0.0009 (5)
C9	0.0121 (5)	0.0120 (6)	0.0130 (6)	-0.0003 (4)	0.0020 (5)	0.0003 (5)
C10	0.0142 (5)	0.0135 (6)	0.0097 (6)	-0.0012 (5)	0.0022 (4)	0.0003 (5)
C11	0.0144 (6)	0.0128 (6)	0.0126 (6)	-0.0002 (5)	0.0041 (5)	-0.0009 (5)
C12	0.0142 (6)	0.0134 (6)	0.0146 (6)	0.0010 (5)	0.0023 (5)	0.0007 (5)
C13	0.0135 (5)	0.0175 (6)	0.0118 (6)	0.0011 (5)	0.0045 (5)	0.0011 (5)
C14	0.0180 (6)	0.0188 (7)	0.0137 (6)	-0.0013 (5)	0.0045 (5)	-0.0007 (5)
C15	0.0165 (6)	0.0185 (7)	0.0142 (7)	0.0013 (5)	0.0033 (5)	0.0008 (5)
C16	0.0150 (6)	0.0197 (7)	0.0121 (6)	0.0020 (5)	0.0022 (5)	-0.0001 (5)
C17	0.0178 (6)	0.0207 (7)	0.0136 (7)	0.0003 (5)	0.0033 (5)	0.0020 (5)
C18	0.0202 (6)	0.0276 (8)	0.0136 (7)	0.0005 (6)	0.0023 (5)	-0.0027 (6)
C19	0.0198 (7)	0.0236 (7)	0.0193 (7)	-0.0006 (6)	0.0021 (5)	-0.0050 (6)
C20	0.0229 (7)	0.0204 (7)	0.0210 (8)	-0.0019 (6)	0.0067 (6)	0.0000 (6)
C21	0.0218 (7)	0.0221 (7)	0.0126 (7)	0.0006 (6)	0.0039 (5)	0.0008 (5)
C22	0.0134 (5)	0.0141 (6)	0.0110 (6)	0.0004 (5)	0.0048 (5)	0.0010 (5)
C23	0.0155 (6)	0.0148 (6)	0.0148 (6)	-0.0003 (5)	0.0050 (5)	0.0005 (5)
C24	0.0205 (6)	0.0134 (6)	0.0160 (7)	0.0013 (5)	0.0080 (5)	0.0003 (5)
C25	0.0198 (6)	0.0175 (6)	0.0142 (7)	0.0065 (5)	0.0071 (5)	0.0050 (5)
C26	0.0163 (6)	0.0203 (7)	0.0122 (6)	0.0026 (5)	0.0030 (5)	0.0025 (5)
C27	0.0156 (6)	0.0156 (6)	0.0119 (6)	0.0005 (5)	0.0039 (5)	-0.0001 (5)
C28	0.0215 (7)	0.0156 (6)	0.0213 (7)	0.0049 (5)	0.0061 (6)	-0.0020 (5)

Geometric parameters (Å, °)

F1—C3	1.3680 (16)	C14—C15	1.339 (2)
F2—C25	1.3604 (16)	C14—H14A	0.9500
F3—C17	1.3636 (17)	C15—C16	1.464 (2)
O1—C11	1.3681 (16)	C15—H15A	0.9500
O1—C28	1.4304 (17)	C16—C17	1.392 (2)
O2—C13	1.2213 (17)	C16—C21	1.400 (2)
C1—C2	1.389 (2)	C17—C18	1.384 (2)
C1—C6	1.3994 (18)	C18—C19	1.386 (2)
C1—H1A	0.9500	C18—H18A	0.9500
C2—C3	1.377 (2)	C19—C20	1.392 (2)
C2—H2A	0.9500	C19—H19A	0.9500
C3—C4	1.377 (2)	C20—C21	1.384 (2)
C4—C5	1.389 (2)	C20—H20A	0.9500
C4—H4A	0.9500	C21—H21A	0.9500
C5—C6	1.397 (2)	C22—C27	1.3970 (18)
C5—H5A	0.9500	C22—C23	1.4002 (19)
C6—C7	1.4874 (19)	C23—C24	1.3915 (19)
C7—C8	1.3965 (18)	C23—H23A	0.9500

C7—C12	1.3975 (19)	C24—C25	1.377 (2)
C8—C9	1.3976 (19)	C24—H24A	0.9500
C8—H8A	0.9500	C25—C26	1.381 (2)
C9—C10	1.4069 (19)	C26—C27	1.3888 (19)
C9—C22	1.4913 (18)	C26—H26A	0.9500
C10—C11	1.4033 (18)	C27—H27A	0.9500
C10—C13	1.5052 (18)	C28—H28A	0.9800
C11—C12	1.3897 (19)	C28—H28B	0.9800
C12—H12A	0.9500	C28—H28C	0.9800
C13—C14	1.483 (2)		
C11—O1—C28	118.02 (11)	C14—C15—H15A	117.6
C2—C1—C6	120.80 (13)	C16—C15—H15A	117.6
C2—C1—H1A	119.6	C17—C16—C21	115.84 (13)
C6—C1—H1A	119.6	C17—C16—C15	120.70 (13)
C3—C2—C1	118.16 (13)	C21—C16—C15	123.46 (13)
C3—C2—H2A	120.9	F3—C17—C18	117.82 (13)
C1—C2—H2A	120.9	F3—C17—C16	118.36 (13)
F1—C3—C2	118.31 (13)	C18—C17—C16	123.82 (14)
F1—C3—C4	118.41 (13)	C17—C18—C19	118.52 (14)
C2—C3—C4	123.28 (13)	C17—C18—H18A	120.7
C3—C4—C5	117.85 (13)	C19—C18—H18A	120.7
C3—C4—H4A	121.1	C18—C19—C20	119.87 (14)
C5—C4—H4A	121.1	C18—C19—H19A	120.1
C4—C5—C6	121.16 (13)	C20—C19—H19A	120.1
C4—C5—H5A	119.4	C21—C20—C19	119.98 (15)
C6—C5—H5A	119.4	C21—C20—H20A	120.0
C5—C6—C1	118.73 (13)	C19—C20—H20A	120.0
C5—C6—C7	121.22 (12)	C20—C21—C16	121.94 (14)
C1—C6—C7	120.01 (12)	C20—C21—H21A	119.0
C8—C7—C12	119.53 (12)	C16—C21—H21A	119.0
C8—C7—C6	120.15 (12)	C27—C22—C23	118.31 (12)
C12—C7—C6	120.26 (12)	C27—C22—C9	122.07 (12)
C7—C8—C9	121.46 (12)	C23—C22—C9	119.60 (12)
C7—C8—H8A	119.3	C24—C23—C22	121.41 (13)
C9—C8—H8A	119.3	C24—C23—H23A	119.3
C8—C9—C10	118.89 (12)	C22—C23—H23A	119.3
C8—C9—C22	118.91 (12)	C25—C24—C23	117.96 (13)
C10—C9—C22	122.19 (12)	C25—C24—H24A	121.0
C11—C10—C9	119.23 (12)	C23—C24—H24A	121.0
C11—C10—C13	117.63 (12)	F2—C25—C24	118.89 (13)
C9—C10—C13	123.06 (12)	F2—C25—C26	118.28 (13)
O1—C11—C12	123.78 (12)	C24—C25—C26	122.82 (13)
O1—C11—C10	114.71 (12)	C25—C26—C27	118.37 (13)
C12—C11—C10	121.40 (12)	C25—C26—H26A	120.8
C11—C12—C7	119.38 (12)	C27—C26—H26A	120.8
C11—C12—H12A	120.3	C26—C27—C22	121.09 (13)
C7—C12—H12A	120.3	C26—C27—H27A	119.5

O2—C13—C14	122.67 (13)	C22—C27—H27A	119.5
O2—C13—C10	120.84 (13)	O1—C28—H28A	109.5
C14—C13—C10	116.49 (12)	O1—C28—H28B	109.5
C15—C14—C13	122.55 (14)	H28A—C28—H28B	109.5
C15—C14—H14A	118.7	O1—C28—H28C	109.5
C13—C14—H14A	118.7	H28A—C28—H28C	109.5
C14—C15—C16	124.73 (14)	H28B—C28—H28C	109.5
C6—C1—C2—C3	1.1 (2)	C9—C10—C13—O2	53.22 (19)
C1—C2—C3—F1	-179.81 (12)	C11—C10—C13—C14	56.61 (16)
C1—C2—C3—C4	0.1 (2)	C9—C10—C13—C14	-126.59 (14)
F1—C3—C4—C5	178.50 (12)	O2—C13—C14—C15	10.3 (2)
C2—C3—C4—C5	-1.4 (2)	C10—C13—C14—C15	-169.89 (13)
C3—C4—C5—C6	1.5 (2)	C13—C14—C15—C16	179.83 (13)
C4—C5—C6—C1	-0.4 (2)	C14—C15—C16—C17	175.82 (14)
C4—C5—C6—C7	-177.98 (13)	C14—C15—C16—C21	-3.2 (2)
C2—C1—C6—C5	-1.0 (2)	C21—C16—C17—F3	-179.05 (12)
C2—C1—C6—C7	176.65 (13)	C15—C16—C17—F3	1.8 (2)
C5—C6—C7—C8	47.62 (19)	C21—C16—C17—C18	1.6 (2)
C1—C6—C7—C8	-129.95 (14)	C15—C16—C17—C18	-177.46 (14)
C5—C6—C7—C12	-135.25 (14)	F3—C17—C18—C19	-179.43 (13)
C1—C6—C7—C12	47.18 (19)	C16—C17—C18—C19	-0.1 (2)
C12—C7—C8—C9	-2.8 (2)	C17—C18—C19—C20	-1.2 (2)
C6—C7—C8—C9	174.33 (12)	C18—C19—C20—C21	0.9 (2)
C7—C8—C9—C10	1.9 (2)	C19—C20—C21—C16	0.7 (2)
C7—C8—C9—C22	-178.15 (12)	C17—C16—C21—C20	-1.9 (2)
C8—C9—C10—C11	1.05 (19)	C15—C16—C21—C20	177.15 (13)
C22—C9—C10—C11	-178.94 (12)	C8—C9—C22—C27	-136.61 (14)
C8—C9—C10—C13	-175.70 (12)	C10—C9—C22—C27	43.38 (19)
C22—C9—C10—C13	4.3 (2)	C8—C9—C22—C23	42.13 (18)
C28—O1—C11—C12	15.75 (19)	C10—C9—C22—C23	-137.88 (14)
C28—O1—C11—C10	-167.98 (12)	C27—C22—C23—C24	-1.9 (2)
C9—C10—C11—O1	-179.40 (12)	C9—C22—C23—C24	179.29 (12)
C13—C10—C11—O1	-2.47 (17)	C22—C23—C24—C25	0.8 (2)
C9—C10—C11—C12	-3.0 (2)	C23—C24—C25—F2	-179.19 (12)
C13—C10—C11—C12	173.89 (12)	C23—C24—C25—C26	0.5 (2)
O1—C11—C12—C7	178.11 (12)	F2—C25—C26—C27	179.10 (12)
C10—C11—C12—C7	2.1 (2)	C24—C25—C26—C27	-0.6 (2)
C8—C7—C12—C11	0.8 (2)	C25—C26—C27—C22	-0.6 (2)
C6—C7—C12—C11	-176.31 (12)	C23—C22—C27—C26	1.8 (2)
C11—C10—C13—O2	-123.58 (14)	C9—C22—C27—C26	-179.42 (13)

Hydrogen-bond geometry (Å, °)

Cg1 is the centroid of the C7—C12 ring.

<i>D</i> —H \cdots <i>A</i>	<i>D</i> —H	H \cdots <i>A</i>	<i>D</i> \cdots <i>A</i>	<i>D</i> —H \cdots <i>A</i>
C4—H4A \cdots O2 ⁱ	0.95	2.40	3.3008 (18)	158
C19—H19A \cdots F2 ⁱⁱ	0.95	2.54	3.2326 (18)	130

C24—H24A...Cg1 ⁱⁱⁱ	0.95	2.84	3.4579 (15)	124
C28—H28C...Cg1 ^{iv}	0.98	2.86	3.5461 (16)	128

Symmetry codes: (i) $x, -y+1/2, z+1/2$; (ii) $-x+1, y-3/2, -z+3/2$; (iii) $x, y+1, z$; (iv) $-x+2, -y, -z+2$.