

Acta Crystallographica Section E

## Structure Reports

Online

ISSN 1600-5368

## (2E)-N'-[(E)-2-Hydroxybenzylidene]-3-phenylprop-2-enohydrazide

Samir A. Carvalho,<sup>a,b</sup> Edson F. da Silva,<sup>a</sup> Carlos A. M. Fraga,<sup>c,b</sup> Solange M. S. V. Wardell,<sup>d</sup> James L. Wardell<sup>e,†</sup> and Edward R. T. Tiekink<sup>f,\*</sup>

<sup>a</sup>FioCruz-Fundação Oswaldo Cruz, Instituto de Tecnologia em Fármacos-Farmanguinhos, Rua Sizenando Nabuco, 100, Manguinhos, 21041-250 Rio de Janeiro, RJ, Brazil, <sup>b</sup>Programa de Pós-Graduação em Química, Instituto de Química, Universidade Federal do Rio de Janeiro, 21949-900 Rio de Janeiro, RJ, Brazil, <sup>c</sup>Laboratório de Avaliação e Síntese de Substâncias Bioativas, Faculdade de Farmácia, Universidade Federal do Rio de Janeiro, PO Box 68023, 21941-902 Rio de Janeiro, RJ, Brazil, <sup>d</sup>CHEMSOL, 1 Harcourt Road, Aberdeen AB15 5NY, Scotland, <sup>e</sup>Centro de Desenvolvimento Tecnológico em Saúde (CDTS), Fundação Oswaldo Cruz (FIOCRUZ), Casa Amarela, Campus de Manguinhos, Av. Brasil 4365, 21040-900 Rio de Janeiro, RJ, Brazil, and <sup>f</sup>Department of Chemistry, University of Malaya, 50603 Kuala Lumpur, Malaysia  
Correspondence e-mail: edward.tiekink@gmail.com

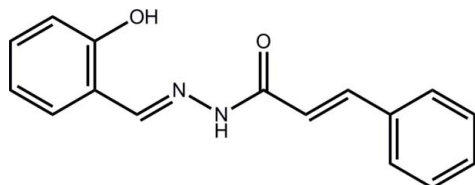
Received 18 June 2012; accepted 23 June 2012

Key indicators: single-crystal X-ray study;  $T = 100$  K; mean  $\sigma(\text{C}-\text{C}) = 0.002$  Å;  $R$  factor = 0.028;  $wR$  factor = 0.075; data-to-parameter ratio = 8.7.

In the non-planar title compound,  $\text{C}_{16}\text{H}_{14}\text{N}_2\text{O}_2$ , the dihedral angle between the phenyl rings is  $16.67(8)^\circ$ . An *E* conformation is found for each of the imine [ $1.286(2)$  Å] and ethylene [ $1.335(2)$  Å] bonds. The amide O and H atoms are *anti*, and an intramolecular hydroxy  $\text{O}-\text{H}\cdots\text{N}$  hydrogen bond is noted. The formation of  $\text{N}-\text{H}\cdots\text{O}$  (hydroxy) hydrogen bonds in the crystal packing leads to helical chains along the *b* axis. Supramolecular layers in the *ab* plane are formed as the chains are linked by  $\text{C}-\text{H}\cdots\text{O}$  interactions.

### Related literature

For background to the biological activity of compounds with the *N*-acylhydrazone framework, (*E*)-cinnamoylhydrazone derivatives, and related structures, see: Carvalho *et al.* (2012a). For the synthesis, see: Carvalho *et al.* (2012b). For background to the data collection at the National Crystallographic Service, see: Coles & Gale (2012).


<sup>†</sup> Additional correspondence author, e-mail: j.wardell@abdn.ac.uk.

### Experimental

#### Crystal data

$\text{C}_{16}\text{H}_{14}\text{N}_2\text{O}_2$   
 $M_r = 266.29$   
 Orthorhombic,  $Pna2_1$   
 $a = 24.2707(17)$  Å  
 $b = 5.1322(2)$  Å  
 $c = 10.5192(4)$  Å  
 $V = 1310.29(12)$  Å<sup>3</sup>  
 $Z = 4$   
 Mo  $K\alpha$  radiation  
 $\mu = 0.09$  mm<sup>-1</sup>  
 $T = 100$  K  
 $0.19 \times 0.09 \times 0.03$  mm

#### Data collection

Rigaku Saturn724+ diffractometer  
 Absorption correction: multi-scan  
 (*CrystalClear*; Rigaku, 2011)  
 $T_{\text{min}} = 0.878$ ,  $T_{\text{max}} = 1.000$   
 5871 measured reflections  
 1575 independent reflections  
 1504 reflections with  $I > 2\sigma(I)$   
 $R_{\text{int}} = 0.022$

#### Refinement

$R[F^2 > 2\sigma(F^2)] = 0.028$   
 $wR(F^2) = 0.075$   
 $S = 0.93$   
 1575 reflections  
 181 parameters  
 1 restraint  
 H atoms treated by a mixture of independent and constrained refinement  
 $\Delta\rho_{\text{max}} = 0.20$  e Å<sup>-3</sup>  
 $\Delta\rho_{\text{min}} = -0.15$  e Å<sup>-3</sup>

Table 1

Hydrogen-bond geometry (Å, °).

$D-\text{H}\cdots A$	$D-\text{H}$	$\text{H}\cdots A$	$D\cdots A$	$D-\text{H}\cdots A$
$\text{O1}-\text{H10}\cdots\text{N1}$	0.85 (2)	1.86 (2)	2.6080 (19)	147 (2)
$\text{N2}-\text{H2n}\cdots\text{O1}^i$	0.88 (1)	2.05 (1)	2.9070 (19)	165 (2)
$\text{C3}-\text{H3}\cdots\text{O2}^{ii}$	0.95	2.54	3.215 (2)	128
$\text{C7}-\text{H7}\cdots\text{O2}^{ii}$	0.95	2.47	3.174 (2)	131

 Symmetry codes: (i)  $-x + \frac{3}{2}, y + \frac{1}{2}, z + \frac{1}{2}$ ; (ii)  $-x + \frac{3}{2}, y - \frac{1}{2}, z + \frac{1}{2}$ .

Data collection: *CrystalClear* (Rigaku, 2011); cell refinement: *CrystalClear*; data reduction: *CrystalClear*; program(s) used to solve structure: *SHELXS97* (Sheldrick, 2008); program(s) used to refine structure: *SHELXL97* (Sheldrick, 2008); molecular graphics: *ORTEP-3 for Windows* (Farrugia, 1997) and *DIAMOND* (Brandenburg, 2006); software used to prepare material for publication: *PUBLICIF* (Westrip, 2010).

The use of the EPSRC X-ray crystallographic service at the University of Southampton, England, and the valuable assistance of the staff there is gratefully acknowledged. JLW acknowledges support from CAPES (Brazil). Structural studies are supported by the Ministry of Higher Education (Malaysia) through the High-Impact Research scheme (UM.C/HIR/MOHE/SC/3).

Supplementary data and figures for this paper are available from the IUCr electronic archives (Reference: HB6860).

### References

- Brandenburg, K. (2006). *DIAMOND*. Crystal Impact GbR, Bonn, Germany.  
 Carvalho, S. A., da Silva, E. F., de Souza, M. V. N., Tiekink, E. R. T., Wardell, J. L. & Wardell, S. M. S. V. (2012a). *Acta Cryst.* **E68**, o2255–o2256.

- Carvalho, S. A., Feitosa, L. O., Soares, M., Costa, T. E. M. M., Henriques, M. G., Salomão, K., de Castro, S. L., Kaiser, M., Brun, R., Wardell, J. L., Wardell, S. M. S. V., Trossini, G. H. G., Andricopulo, A. D., da Silva, E. F. & Fraga, C. A. M. (2012b). *Bioorg. Med. Chem.* DOI:10.1016/j.ejmech.2012.05.041.
- Coles, S. J. & Gale, P. A. (2012). *Chem. Sci.* **3**, 683–689.
- Farrugia, L. J. (1997). *J. Appl. Cryst.* **30**, 565.
- Rigaku (2011). *CrystalClear*. Rigaku/MSI Inc., The Woodlands, Texas, USA.
- Sheldrick, G. M. (2008). *Acta Cryst.* **A64**, 112–122.
- Westrip, S. P. (2010). *J. Appl. Cryst.* **43**, 920–925.

## supporting information

*Acta Cryst.* (2012). E68, o2253–o2254 [https://doi.org/10.1107/S1600536812028516]

**(2*E*)-*N'*-[(*E*)-2-Hydroxybenzylidene]-3-phenylprop-2-enohydrazide**

**Samir A. Carvalho, Edson F. da Silva, Carlos A. M. Fraga, Solange M. S. V. Wardell, James L. Wardell and Edward R. T. Tiekink**

**S1. Comment**

Compounds related to the title (*E*)-cinnamoylhydrazone derivative, (I), are of interest owing to their biological activities (Carvalho *et al.*, 2012*a*). For example, (I), exhibits considerable trypanocidal activity (Carvalho *et al.*, 2012*b*). Herein, the crystal structure determination of (I) is described.

In (I), Fig. 1, there is a twist in the molecule as seen in the dihedral angle between the phenyl rings of 16.67 (8)°. The greatest deviation from a planar torsion angle is found for C9—C10—C11—C16 of 8.4 (3)°. There is an intramolecular hydroxy-O1⋯N2 hydrogen bond. The conformation about each of the imine [N1=C7 = 1.286 (2) Å] and ethylene [C9=C10 = 1.335 (2) Å] bonds is *E*. The amide-O and -H atoms are *anti*. The molecular structure of (I) resembles that of the unsubstituted compound (Carvalho *et al.*, 2012*a*) where the dihedral angle between terminal phenyl rings is 25.48 (12)°.

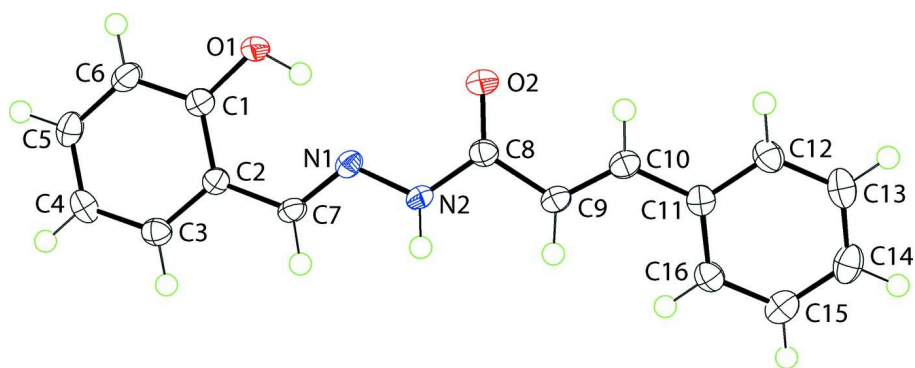
The formation of N—H⋯O hydrogen bonds between the amide-H and hydroxyl-O leads to helical supramolecular chains along the *b* axis, Fig. 2 and Table 1. The chains are linked into a supramolecular layer in the *ab* plane by C—H⋯O interactions, Fig. 3 and Table 1; the layers inter-digitate along the *c* axis, Fig. 4.

**S2. Experimental**

The title compound was prepared as reported (Carvalho *et al.*, 2012*b*). The sample used in the crystallographic study was grown from its EtOH solution and intensity data was collected at the National Crystallographic Service, England (Coles & Gale, 2012).

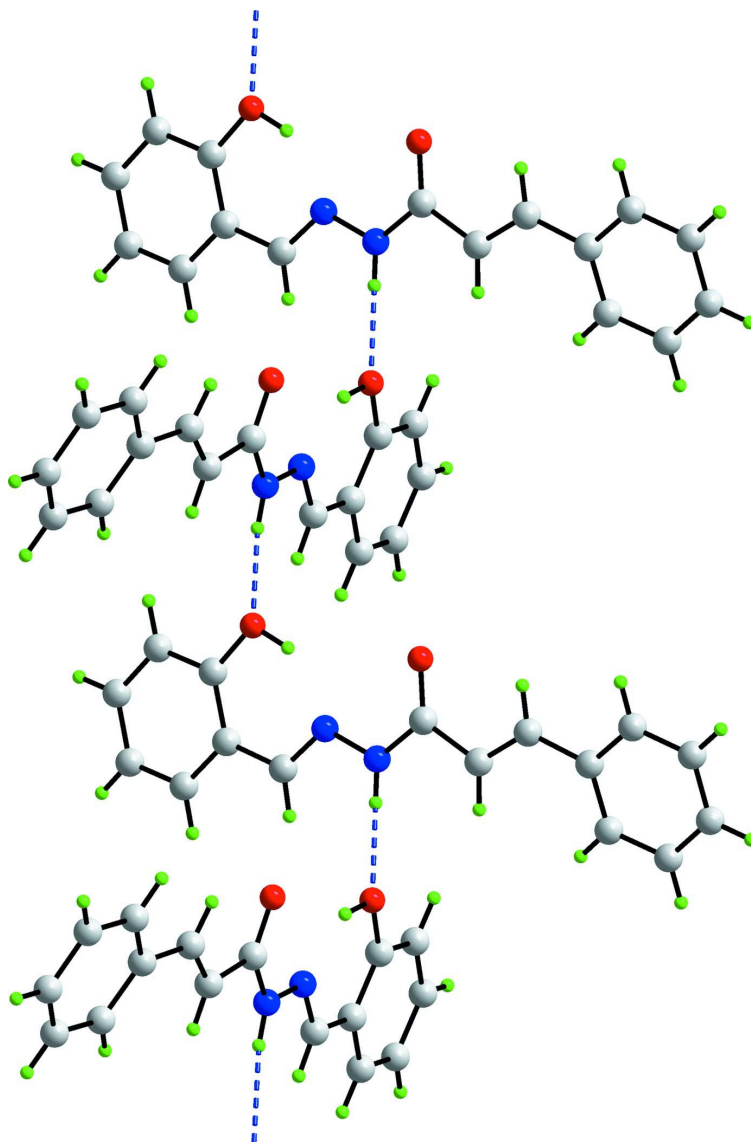
**S3. Refinement**

The C-bound H atoms were geometrically placed (C—H = 0.95 Å) and refined as riding with  $U_{\text{iso}}(\text{H}) = 1.2U_{\text{eq}}(\text{C})$ . The O- and N-bound H atoms were located from a difference map and refined with the distance restraint O—H = 0.84±0.01 and N—H = 0.88±0.01 Å, and with  $U_{\text{iso}}(\text{H}) = zU_{\text{eq}}(\text{carrier atom})$ ;  $z = 1.5$  for O and  $z = 1.2$  for N. In the absence of significant anomalous scattering effects, 1033 Friedel pairs were averaged in the final refinement. One reflection, *i.e.* (20 0 0) was omitted from the final refinement owing to poor agreement.



**Figure 1**

The molecular structure of (I) showing the atom-labelling scheme and displacement ellipsoids at the 70% probability level.



**Figure 2**

A view of the supramolecular helical chain along the *b* axis in (I). The N—H···O hydrogen bonds are shown as blue dashed lines.

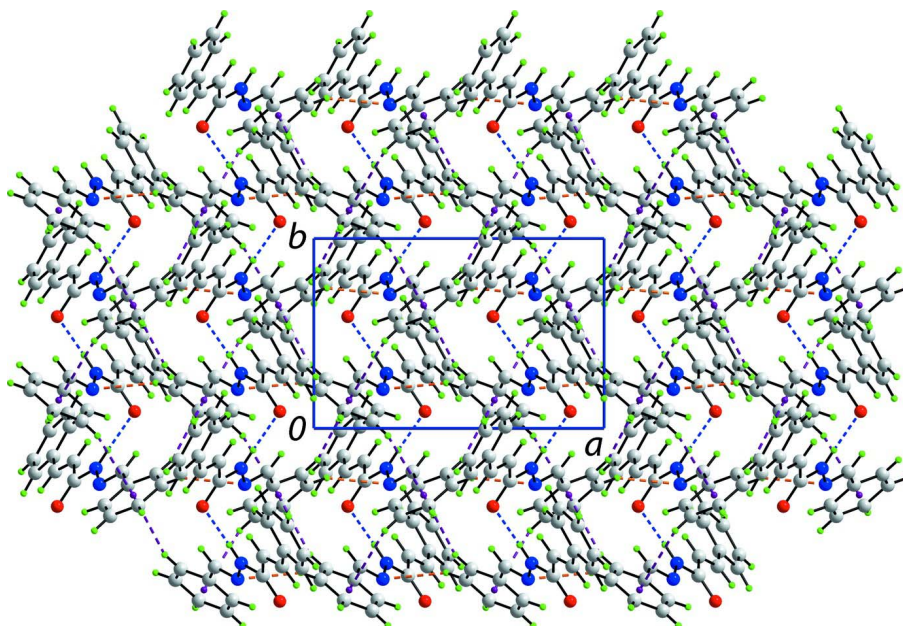


Figure 3

A view of the supramolecular layer in the  $ab$  plane in (I) sustained by N—H $\cdots$ O and interactions, shown as blue and orange dashed lines, respectively.

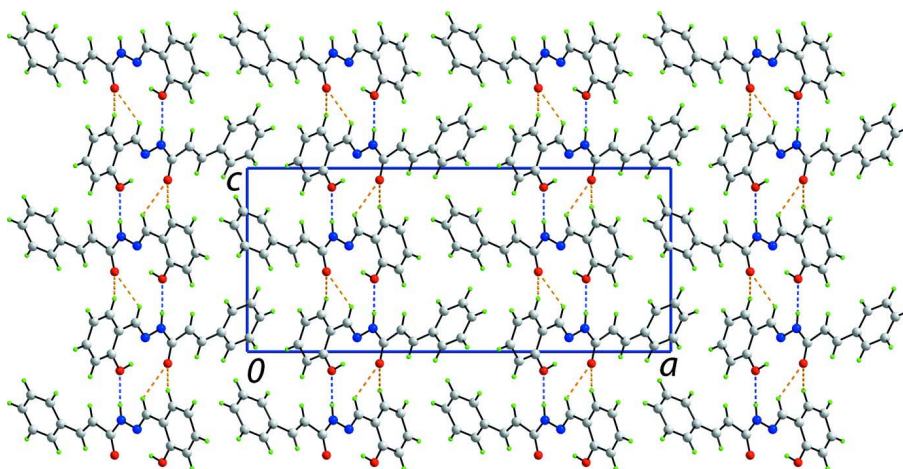


Figure 4

A view in projection down the  $b$  axis of the unit-cell contents for (I) showing the inter-digitation of layers. The N—H $\cdots$ O and C—H $\cdots$ O interactions are shown as blue and orange dashed lines, respectively.

**(2*E*)-*N'*-[(*E*)-2-Hydroxybenzylidene]-3-phenylprop- 2-enohydrazide**

*Crystal data*

$C_{16}H_{14}N_2O_2$

$M_r = 266.29$

Orthorhombic,  $Pna2_1$

Hall symbol:  $P\ 2c\ -2n$

$a = 24.2707\ (17)\ \text{\AA}$

$b = 5.1322\ (2)\ \text{\AA}$

$c = 10.5192\ (4)\ \text{\AA}$

$V = 1310.29\ (12)\ \text{\AA}^3$

$Z = 4$

$F(000) = 560$

$D_x = 1.350\ \text{Mg m}^{-3}$

Mo  $K\alpha$  radiation,  $\lambda = 0.71073\ \text{\AA}$

Cell parameters from 5659 reflections

$\theta = 3.4\text{--}27.5^\circ$

$\mu = 0.09 \text{ mm}^{-1}$   
 $T = 100 \text{ K}$

Plate, colourless  
 $0.19 \times 0.09 \times 0.03 \text{ mm}$

*Data collection*

Rigaku Saturn724+  
 diffractometer  
 Radiation source: Rotating Anode  
 Confocal monochromator  
 Detector resolution:  $28.5714 \text{ pixels mm}^{-1}$   
 profile data from  $\omega$ -scans  
 Absorption correction: multi-scan  
 (*CrystalClear*; Rigaku, 2011)  
 $T_{\min} = 0.878$ ,  $T_{\max} = 1.000$

5871 measured reflections  
 1575 independent reflections  
 1504 reflections with  $I > 2\sigma(I)$   
 $R_{\text{int}} = 0.022$   
 $\theta_{\max} = 27.5^\circ$ ,  $\theta_{\min} = 3.4^\circ$   
 $h = -30 \rightarrow 31$   
 $k = -6 \rightarrow 6$   
 $l = -13 \rightarrow 13$

*Refinement*

Refinement on  $F^2$   
 Least-squares matrix: full  
 $R[F^2 > 2\sigma(F^2)] = 0.028$   
 $wR(F^2) = 0.075$   
 $S = 0.93$   
 1575 reflections  
 181 parameters  
 1 restraint  
 Primary atom site location: structure-invariant  
 direct methods

Secondary atom site location: difference Fourier  
 map  
 Hydrogen site location: inferred from  
 neighbouring sites  
 H atoms treated by a mixture of independent  
 and constrained refinement  
 $w = 1/[\sigma^2(F_o^2) + (0.0497P)^2 + 0.3579P]$   
 where  $P = (F_o^2 + 2F_c^2)/3$   
 $(\Delta/\sigma)_{\max} = 0.001$   
 $\Delta\rho_{\max} = 0.20 \text{ e } \text{Å}^{-3}$   
 $\Delta\rho_{\min} = -0.15 \text{ e } \text{Å}^{-3}$   
 Absolute structure: nd

*Special details*

**Geometry.** All s.u.'s (except the s.u. in the dihedral angle between two l.s. planes) are estimated using the full covariance matrix. The cell s.u.'s are taken into account individually in the estimation of s.u.'s in distances, angles and torsion angles; correlations between s.u.'s in cell parameters are only used when they are defined by crystal symmetry. An approximate (isotropic) treatment of cell s.u.'s is used for estimating s.u.'s involving l.s. planes.

**Refinement.** Refinement of  $F^2$  against ALL reflections. The weighted  $R$ -factor  $wR$  and goodness of fit  $S$  are based on  $F^2$ , conventional  $R$ -factors  $R$  are based on  $F$ , with  $F$  set to zero for negative  $F^2$ . The threshold expression of  $F^2 > 2\sigma(F^2)$  is used only for calculating  $R$ -factors(gt) *etc.* and is not relevant to the choice of reflections for refinement.  $R$ -factors based on  $F^2$  are statistically about twice as large as those based on  $F$ , and  $R$ -factors based on ALL data will be even larger.

*Fractional atomic coordinates and isotropic or equivalent isotropic displacement parameters ( $\text{Å}^2$ )*

	<i>x</i>	<i>y</i>	<i>z</i>	$U_{\text{iso}}^*/U_{\text{eq}}$
O1	0.69975 (5)	0.5777 (2)	-0.10431 (12)	0.0192 (3)
H1O	0.7247 (7)	0.671 (4)	-0.071 (2)	0.029*
O2	0.81273 (5)	1.1490 (3)	-0.06463 (13)	0.0232 (3)
N1	0.75962 (6)	0.7782 (3)	0.07685 (14)	0.0150 (3)
N2	0.79692 (6)	0.9517 (3)	0.12637 (14)	0.0158 (3)
H2N	0.7997 (9)	0.959 (4)	0.2096 (10)	0.019*
C1	0.67996 (7)	0.4128 (3)	-0.01381 (17)	0.0157 (3)
C2	0.69722 (7)	0.4288 (3)	0.11420 (17)	0.0140 (3)
C3	0.67560 (7)	0.2498 (3)	0.20137 (17)	0.0171 (4)
H3	0.6869	0.2577	0.2877	0.021*
C4	0.63806 (7)	0.0613 (3)	0.16428 (19)	0.0187 (4)
H4	0.6241	-0.0602	0.2244	0.022*

C5	0.62097 (7)	0.0517 (3)	0.03833 (19)	0.0201 (4)
H5	0.5947	-0.0753	0.0128	0.024*
C6	0.64170 (7)	0.2249 (3)	-0.05053 (18)	0.0197 (4)
H6	0.6298	0.2157	-0.1365	0.024*
C7	0.73698 (7)	0.6215 (3)	0.15666 (17)	0.0150 (3)
H7	0.7463	0.6319	0.2442	0.018*
C8	0.82227 (7)	1.1293 (3)	0.04921 (17)	0.0156 (3)
C9	0.86435 (7)	1.2853 (3)	0.11785 (17)	0.0161 (3)
H9	0.8711	1.2542	0.2055	0.019*
C10	0.89272 (7)	1.4693 (3)	0.05648 (17)	0.0170 (3)
H10	0.8815	1.5065	-0.0281	0.020*
C11	0.93932 (7)	1.6197 (3)	0.10555 (17)	0.0159 (3)
C12	0.96062 (7)	1.8241 (3)	0.03252 (19)	0.0203 (4)
H12	0.9442	1.8652	-0.0469	0.024*
C13	1.00558 (8)	1.9677 (4)	0.0748 (2)	0.0226 (4)
H13	1.0196	2.1061	0.0242	0.027*
C14	1.03004 (7)	1.9097 (4)	0.19034 (19)	0.0225 (4)
H14	1.0606	2.0087	0.2193	0.027*
C15	1.00967 (7)	1.7064 (4)	0.26359 (18)	0.0210 (4)
H15	1.0266	1.6658	0.3426	0.025*
C16	0.96482 (7)	1.5624 (3)	0.22228 (18)	0.0177 (3)
H16	0.9512	1.4238	0.2732	0.021*

*Atomic displacement parameters (Å<sup>2</sup>)*

	$U^{11}$	$U^{22}$	$U^{33}$	$U^{12}$	$U^{13}$	$U^{23}$
O1	0.0245 (6)	0.0213 (6)	0.0118 (6)	-0.0067 (5)	-0.0012 (5)	-0.0003 (5)
O2	0.0293 (7)	0.0274 (7)	0.0130 (6)	-0.0075 (5)	-0.0028 (6)	-0.0001 (6)
N1	0.0147 (6)	0.0154 (6)	0.0149 (6)	-0.0003 (5)	-0.0009 (5)	-0.0031 (6)
N2	0.0175 (7)	0.0183 (7)	0.0115 (7)	-0.0035 (5)	-0.0015 (6)	-0.0028 (6)
C1	0.0148 (7)	0.0167 (7)	0.0154 (8)	0.0021 (6)	0.0008 (6)	-0.0019 (7)
C2	0.0136 (7)	0.0144 (7)	0.0141 (8)	0.0011 (6)	0.0011 (6)	-0.0023 (7)
C3	0.0170 (8)	0.0190 (8)	0.0154 (9)	0.0017 (6)	0.0011 (7)	-0.0009 (7)
C4	0.0189 (8)	0.0156 (8)	0.0215 (9)	-0.0003 (6)	0.0054 (7)	0.0021 (7)
C5	0.0175 (8)	0.0179 (8)	0.0248 (9)	-0.0029 (6)	0.0001 (7)	-0.0049 (7)
C6	0.0189 (8)	0.0225 (8)	0.0177 (8)	-0.0014 (7)	-0.0032 (7)	-0.0041 (8)
C7	0.0150 (7)	0.0182 (8)	0.0118 (7)	0.0005 (6)	-0.0007 (6)	-0.0029 (7)
C8	0.0159 (7)	0.0166 (8)	0.0143 (8)	0.0010 (6)	0.0009 (6)	-0.0013 (7)
C9	0.0167 (7)	0.0174 (8)	0.0141 (7)	0.0008 (6)	-0.0010 (6)	-0.0024 (7)
C10	0.0175 (8)	0.0176 (8)	0.0158 (8)	0.0015 (6)	-0.0009 (7)	-0.0018 (7)
C11	0.0148 (7)	0.0148 (7)	0.0180 (8)	0.0017 (6)	0.0028 (7)	-0.0019 (7)
C12	0.0212 (8)	0.0180 (8)	0.0217 (9)	0.0004 (6)	0.0004 (7)	0.0039 (7)
C13	0.0207 (9)	0.0160 (8)	0.0312 (10)	-0.0016 (6)	0.0038 (8)	0.0015 (8)
C14	0.0175 (8)	0.0189 (8)	0.0311 (11)	-0.0004 (7)	0.0009 (7)	-0.0060 (8)
C15	0.0178 (8)	0.0230 (9)	0.0223 (9)	0.0025 (7)	-0.0015 (7)	-0.0046 (8)
C16	0.0173 (7)	0.0174 (8)	0.0182 (8)	0.0010 (6)	0.0030 (7)	-0.0001 (7)



*Geometric parameters (Å, °)*

O1—C1	1.361 (2)	C7—H7	0.9500
O1—H1O	0.848 (10)	C8—C9	1.485 (2)
O2—C8	1.224 (2)	C9—C10	1.335 (2)
N1—C7	1.286 (2)	C9—H9	0.9500
N1—N2	1.3727 (19)	C10—C11	1.463 (2)
N2—C8	1.367 (2)	C10—H10	0.9500
N2—H2N	0.879 (10)	C11—C12	1.399 (2)
C1—C6	1.393 (2)	C11—C16	1.406 (2)
C1—C2	1.413 (3)	C12—C13	1.390 (3)
C2—C3	1.400 (2)	C12—H12	0.9500
C2—C7	1.452 (2)	C13—C14	1.385 (3)
C3—C4	1.385 (2)	C13—H13	0.9500
C3—H3	0.9500	C14—C15	1.388 (3)
C4—C5	1.389 (3)	C14—H14	0.9500
C4—H4	0.9500	C15—C16	1.386 (2)
C5—C6	1.385 (3)	C15—H15	0.9500
C5—H5	0.9500	C16—H16	0.9500
C6—H6	0.9500		
C1—O1—H1O	108.1 (18)	O2—C8—C9	124.15 (16)
C7—N1—N2	116.09 (15)	N2—C8—C9	112.36 (15)
C8—N2—N1	120.28 (15)	C10—C9—C8	120.06 (16)
C8—N2—H2N	122.0 (15)	C10—C9—H9	120.0
N1—N2—H2N	117.1 (15)	C8—C9—H9	120.0
O1—C1—C6	118.13 (17)	C9—C10—C11	126.95 (16)
O1—C1—C2	121.73 (15)	C9—C10—H10	116.5
C6—C1—C2	120.14 (17)	C11—C10—H10	116.5
C3—C2—C1	118.36 (15)	C12—C11—C16	118.26 (16)
C3—C2—C7	119.64 (16)	C12—C11—C10	119.17 (16)
C1—C2—C7	121.99 (16)	C16—C11—C10	122.55 (16)
C4—C3—C2	121.36 (17)	C13—C12—C11	120.80 (18)
C4—C3—H3	119.3	C13—C12—H12	119.6
C2—C3—H3	119.3	C11—C12—H12	119.6
C3—C4—C5	119.33 (17)	C14—C13—C12	120.23 (18)
C3—C4—H4	120.3	C14—C13—H13	119.9
C5—C4—H4	120.3	C12—C13—H13	119.9
C6—C5—C4	120.84 (17)	C13—C14—C15	119.73 (17)
C6—C5—H5	119.6	C13—C14—H14	120.1
C4—C5—H5	119.6	C15—C14—H14	120.1
C5—C6—C1	119.96 (17)	C16—C15—C14	120.44 (17)
C5—C6—H6	120.0	C16—C15—H15	119.8
C1—C6—H6	120.0	C14—C15—H15	119.8
N1—C7—C2	120.60 (16)	C15—C16—C11	120.54 (17)
N1—C7—H7	119.7	C15—C16—H16	119.7
C2—C7—H7	119.7	C11—C16—H16	119.7
O2—C8—N2	123.43 (16)		

C7—N1—N2—C8	-178.71 (15)	N1—N2—C8—O2	1.8 (3)
O1—C1—C2—C3	-179.07 (15)	N1—N2—C8—C9	-175.41 (14)
C6—C1—C2—C3	1.0 (2)	O2—C8—C9—C10	3.3 (3)
O1—C1—C2—C7	0.0 (2)	N2—C8—C9—C10	-179.52 (15)
C6—C1—C2—C7	-179.97 (16)	C8—C9—C10—C11	-172.84 (16)
C1—C2—C3—C4	-0.2 (2)	C9—C10—C11—C12	-173.45 (17)
C7—C2—C3—C4	-179.29 (15)	C9—C10—C11—C16	8.4 (3)
C2—C3—C4—C5	-0.8 (3)	C16—C11—C12—C13	-0.4 (3)
C3—C4—C5—C6	1.1 (3)	C10—C11—C12—C13	-178.64 (16)
C4—C5—C6—C1	-0.4 (3)	C11—C12—C13—C14	0.1 (3)
O1—C1—C6—C5	179.34 (15)	C12—C13—C14—C15	0.4 (3)
C2—C1—C6—C5	-0.7 (3)	C13—C14—C15—C16	-0.4 (3)
N2—N1—C7—C2	-179.55 (14)	C14—C15—C16—C11	0.1 (3)
C3—C2—C7—N1	176.11 (15)	C12—C11—C16—C15	0.3 (2)
C1—C2—C7—N1	-2.9 (2)	C10—C11—C16—C15	178.50 (16)

*Hydrogen-bond geometry (Å, °)*

<i>D</i> —H $\cdots$ <i>A</i>	<i>D</i> —H	H $\cdots$ <i>A</i>	<i>D</i> $\cdots$ <i>A</i>	<i>D</i> —H $\cdots$ <i>A</i>
O1—H1 <sub>o</sub> $\cdots$ N1	0.85 (2)	1.86 (2)	2.6080 (19)	147 (2)
N2—H2 <sub>n</sub> $\cdots$ O1 <sup>i</sup>	0.88 (1)	2.05 (1)	2.9070 (19)	165 (2)
C3—H3 $\cdots$ O2 <sup>ii</sup>	0.95	2.54	3.215 (2)	128
C7—H7 $\cdots$ O2 <sup>ii</sup>	0.95	2.47	3.174 (2)	131

Symmetry codes: (i)  $-x+3/2, y+1/2, z+1/2$ ; (ii)  $-x+3/2, y-1/2, z+1/2$ .