

Acta Crystallographica Section E

## Structure Reports

Online

ISSN 1600-5368

# 4-[(2-Bromobenzylidene)amino]-3-(pyridin-4-yl)-1*H*-1,2,4-triazole-5(4*H*)-thione

Wei Gao,\* Xian Li, Xin-Ling Wang, Jing Yang and Xue-Fen Wu

School of Pharmacy, Henan University of Traditional Chinese Medicine, Zhengzhou 450008, People's Republic of China

Correspondence e-mail: xiaojun801115@163.com

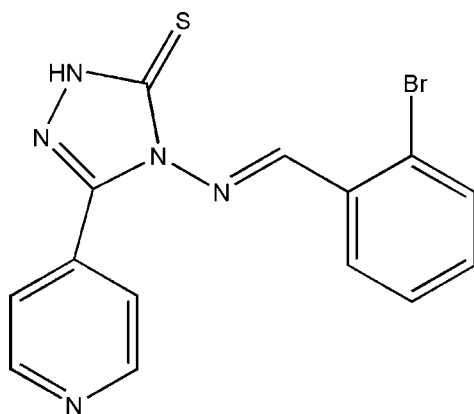
Received 25 May 2012; accepted 29 May 2012

Key indicators: single-crystal X-ray study;  $T = 113$  K; mean  $\sigma(\text{C}-\text{C}) = 0.003$  Å;  $R$  factor = 0.030;  $wR$  factor = 0.087; data-to-parameter ratio = 17.0.

In the title compound,  $\text{C}_{14}\text{H}_{10}\text{BrN}_5\text{S}$ , the dihedral angle between the triazole ring and the pyridine and bromobenzene rings are  $26.42$  (13) and  $6.28$  (13)°, respectively. The molecule exists as a thione in the solid state. In the crystal, molecules are linked by  $\text{N}-\text{H}\cdots\text{N}$  hydrogen bonds, generating [010]  $C(8)$  chains.

## Related literature

For related structures, see: Zou *et al.* (2008); Kashaev *et al.* (2010); Liu & Liu (2011); Liu, Pan, Weng, Tan *et al.* (2012); Liu, Tan, Weng & Liu (2012); Tan *et al.* (2012).



## Experimental

### Crystal data

$\text{C}_{14}\text{H}_{10}\text{BrN}_5\text{S}$   
 $M_r = 360.24$   
 Monoclinic,  $C2/c$   
 $a = 10.406$  (3) Å  
 $b = 17.299$  (5) Å  
 $c = 15.858$  (4) Å  
 $\beta = 103.719$  (5)°  
 $V = 2773.3$  (13) Å<sup>3</sup>  
 $Z = 8$   
 Mo  $K\alpha$  radiation  
 $\mu = 3.12$  mm<sup>-1</sup>  
 $T = 113$  K  
 $0.20 \times 0.18 \times 0.12$  mm

### Data collection

Rigaku Saturn CCD diffractometer  
 Absorption correction: multi-scan  
 (*CrystalClear*; Rigaku/MS, 2005)  
 $T_{\min} = 0.575$ ,  $T_{\max} = 0.706$   
 14119 measured reflections  
 3293 independent reflections  
 2565 reflections with  $I > 2\sigma(I)$   
 $R_{\text{int}} = 0.036$

### Refinement

$R[F^2 > 2\sigma(F^2)] = 0.030$   
 $wR(F^2) = 0.087$   
 $S = 1.08$   
 3293 reflections  
 194 parameters  
 1 restraint  
 H atoms treated by a mixture of independent and constrained refinement  
 $\Delta\rho_{\text{max}} = 0.54$  e Å<sup>-3</sup>  
 $\Delta\rho_{\text{min}} = -0.42$  e Å<sup>-3</sup>

**Table 1**

Hydrogen-bond geometry (Å, °).

$D-\text{H}\cdots A$	$D-\text{H}$	$\text{H}\cdots A$	$D\cdots A$	$D-\text{H}\cdots A$
$\text{N3}-\text{H3}\cdots\text{N1}^i$	0.90 (1)	1.95 (1)	2.821 (3)	163 (3)

Symmetry code: (i)  $-x - \frac{1}{2}, y + \frac{1}{2}, -z + \frac{3}{2}$ .

Data collection: *CrystalClear* (Rigaku/MS, 2005); cell refinement: *CrystalClear*; data reduction: *CrystalClear*; program(s) used to solve structure: *SHELXS97* (Sheldrick, 2008); program(s) used to refine structure: *SHELXL97* (Sheldrick, 2008); molecular graphics: *SHELXTL* (Sheldrick, 2008); software used to prepare material for publication: *SHELXL97*.

We gratefully acknowledge financial support by the Doctoral Research Fund of Henan University of Traditional Chinese Medicine.

Supplementary data and figures for this paper are available from the IUCr electronic archives (Reference: HB6820).

## References

- Kashaev, A. G., Zimichev, A. V., Rybakov, V. B., Klimochkin, Y. N. & Zemtsova, M. N. (2010). *Acta Cryst.* **E66**, o3090.  
 Liu, X.-F. & Liu, X.-H. (2011). *Acta Cryst.* **E67**, o202.  
 Liu, X. H., Pan, L., Weng, J. Q., Tan, C. X., Li, Y. H., Wang, B. L. & Li, Z. M. (2012). *Mol. Divers.* doi:10.1007/s11030-011-9352-z.  
 Liu, X.-H., Tan, C.-X., Weng, J.-Q. & Liu, H.-J. (2012). *Acta Cryst.* **E68**, o493.  
 Rigaku/MS (2005). *CrystalClear*. Rigaku/MS Inc. The Woodlands, Texas, USA.  
 Sheldrick, G. M. (2008). *Acta Cryst.* **A64**, 112–122.  
 Tan, C. X., Shi, Y. X., Weng, J. Q., Liu, X. H., Li, B. J. & Zhao, W. G. (2012). *Lett. Drug. Des. Discov.* **9**, 431–435.  
 Zou, F., Xuan, W.-M., Fang, X.-M. & Zhang, H. (2008). *Acta Cryst.* **E64**, o213.

## supporting information

*Acta Cryst.* (2012). E68, o1996 [https://doi.org/10.1107/S1600536812024439]

**4-[(2-Bromobenzylidene)amino]-3-(pyridin-4-yl)-1*H*-1,2,4-triazole-5(4*H*)-thione****Wei Gao, Xian Li, Xin-Ling Wang, Jing Yang and Xue-Fen Wu****S1. Comment**

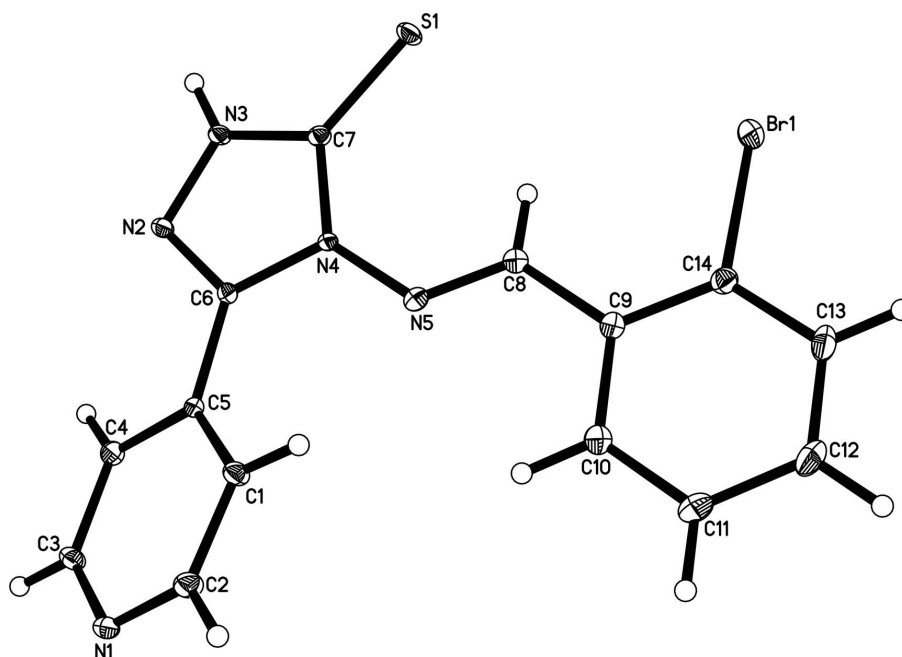
Single-crystal X-ray diffraction analysis reveals that the title compound crystallizes in the monoclinic space group *C2/c*. As shown in Fig. 1, the dihedral angle between the pyridyl and triazole rings is 153.6°. As shown in Fig. 2, the crystal structure is stabilized by intermolecular hydrogen bonds N—H···N.

**S2. Experimental**

In round bottom flask, 4-pyridine carboxylic acid (0.01 mol) and hydrazine hydrate 99% (0.01 mol) were taken along with alcohol and the mixture was refluxed for 4 h. Then from the reaction mixture alcohol was removed under reduced pressure. Solid residue was obtained, recrystallized from ethanol. In a 250 ml round bottom flask, 4-pyridine hydrazide (0.075 mol) was taken. To this a solution of potassium hydroxide (0.075 mol) in 100 ml of absolute alcohol and carbon disulfide were added agitated for overnight. The reaction mixture was diluted with 200 ml of dry ether. The solid obtained was 15.05 g (80%). It was filtered and washed with dry ether. A mixture of potassium-pyridine-dithiocarbazate (0.1 mol) and hydrazine hydrate 5 ml (0.1 mol) was refluxed for 2 h with occasional shaking and the solution was poured into the cold water. The mixture was acidified with hydrochloric acid. The precipitate obtained was filtered, dried and recrystallized by using alcohol. A mixture of 5-pyridine-4-amino-3-mercapto-4(*H*)-1,2,4-triazole (0.01 mol) taken with 2-bromobenzaldehyde (0.01 mol) and concentrated sulfuric acid (0.5 ml) in ethanol 100 ml. The mixture was refluxed on water bath for several hours with TLC monitoring. The solid was obtained on cooling the mixture and poured in cold water was afforded the the title compound. Colourless prisms were grown from ethanol solution.

**S3. Refinement**

All the H atoms were positioned geometrically (C—H = 0.93–0.97 Å) and refined as riding with  $U_{\text{iso}}(\text{H}) = 1.2U_{\text{eq}}(\text{C})$  or  $1.5U_{\text{eq}}(\text{methyl C})$ .



**Figure 1**

The molecular structure of (I). Displacement ellipsoids are drawn at the 30% probability level and H atoms are shown as small spheres of arbitrary radii.

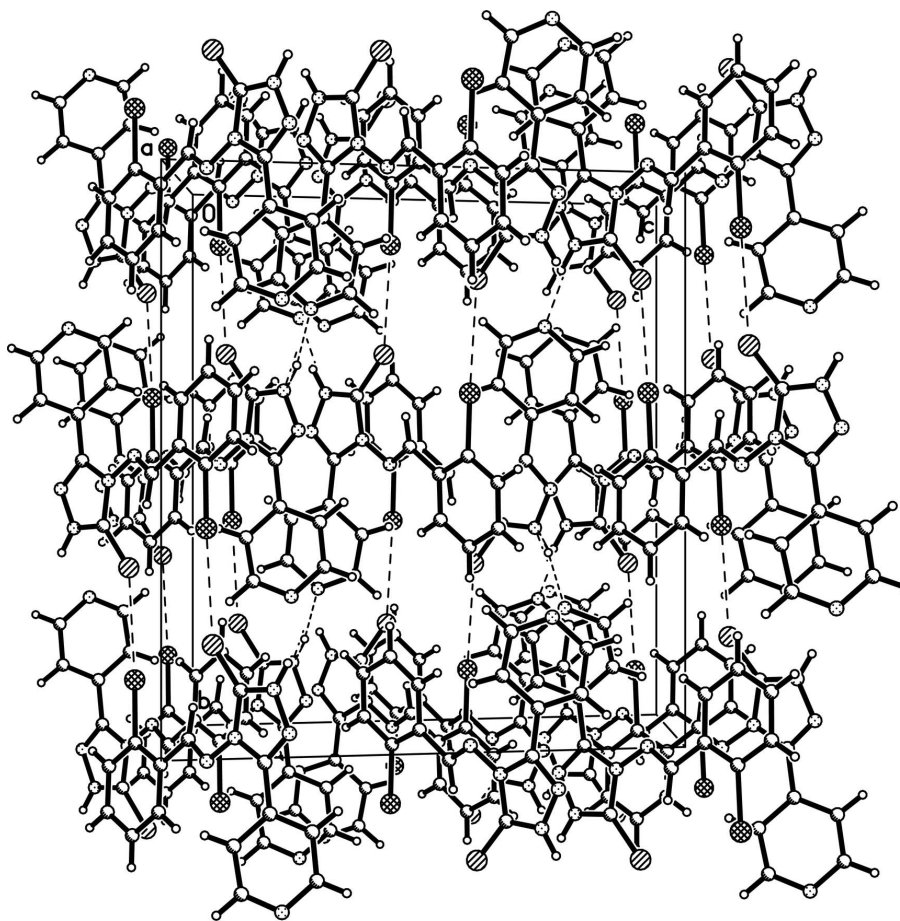


Figure 2

The crystal packing for (I).

#### 4-[(2-Bromobenzylidene)amino]-3-(pyridin-4-yl)-1*H*-1,2,4-triazole-5(4*H*)-thione

##### Crystal data

$C_{14}H_{10}BrN_5S$

$M_r = 360.24$

Monoclinic,  $C2/c$

$a = 10.406$  (3) Å

$b = 17.299$  (5) Å

$c = 15.858$  (4) Å

$\beta = 103.719$  (5)°

$V = 2773.3$  (13) Å<sup>3</sup>

$Z = 8$

$F(000) = 1440$

$D_x = 1.726$  Mg m<sup>-3</sup>

Mo  $K\alpha$  radiation,  $\lambda = 0.71073$  Å

Cell parameters from 5149 reflections

$\theta = 2.3$ – $27.9$ °

$\mu = 3.12$  mm<sup>-1</sup>

$T = 113$  K

Prism, colorless

$0.20 \times 0.18 \times 0.12$  mm

##### Data collection

Rigaku Saturn CCD  
diffractometer

Radiation source: rotating anode

Multilayer monochromator

Detector resolution: 14.63 pixels mm<sup>-1</sup>

$\omega$  and  $\phi$  scans

Absorption correction: multi-scan

(*CrystalClear*; Rigaku/MSC, 2005)

$T_{\min} = 0.575$ ,  $T_{\max} = 0.706$

14119 measured reflections

3293 independent reflections

2565 reflections with  $I > 2\sigma(I)$

$R_{\text{int}} = 0.036$

$\theta_{\max} = 27.9^\circ$ ,  $\theta_{\min} = 2.3^\circ$   
 $h = -13 \rightarrow 13$

$k = -22 \rightarrow 22$   
 $l = -20 \rightarrow 20$

*Refinement*

Refinement on  $F^2$   
 Least-squares matrix: full  
 $R[F^2 > 2\sigma(F^2)] = 0.030$   
 $wR(F^2) = 0.087$   
 $S = 1.08$   
 3293 reflections  
 194 parameters  
 1 restraint  
 Primary atom site location: structure-invariant  
 direct methods

Secondary atom site location: difference Fourier  
 map  
 Hydrogen site location: inferred from  
 neighbouring sites  
 H atoms treated by a mixture of independent  
 and constrained refinement  
 $w = 1/[\sigma^2(F_o^2) + (0.0476P)^2 + 0.9724P]$   
 where  $P = (F_o^2 + 2F_c^2)/3$   
 $(\Delta/\sigma)_{\max} = 0.003$   
 $\Delta\rho_{\max} = 0.54 \text{ e } \text{\AA}^{-3}$   
 $\Delta\rho_{\min} = -0.42 \text{ e } \text{\AA}^{-3}$

*Special details*

**Geometry.** All e.s.d.'s (except the e.s.d. in the dihedral angle between two l.s. planes) are estimated using the full covariance matrix. The cell e.s.d.'s are taken into account individually in the estimation of e.s.d.'s in distances, angles and torsion angles; correlations between e.s.d.'s in cell parameters are only used when they are defined by crystal symmetry. An approximate (isotropic) treatment of cell e.s.d.'s is used for estimating e.s.d.'s involving l.s. planes.

**Refinement.** Refinement of  $F^2$  against ALL reflections. The weighted  $R$ -factor  $wR$  and goodness of fit  $S$  are based on  $F^2$ , conventional  $R$ -factors  $R$  are based on  $F$ , with  $F$  set to zero for negative  $F^2$ . The threshold expression of  $F^2 > \sigma(F^2)$  is used only for calculating  $R$ -factors(gt) *etc.* and is not relevant to the choice of reflections for refinement.  $R$ -factors based on  $F^2$  are statistically about twice as large as those based on  $F$ , and  $R$ -factors based on ALL data will be even larger.

*Fractional atomic coordinates and isotropic or equivalent isotropic displacement parameters ( $\text{\AA}^2$ )*

	<i>x</i>	<i>y</i>	<i>z</i>	$U_{\text{iso}}^*/U_{\text{eq}}$
Br1	0.42237 (3)	1.115195 (15)	1.078191 (18)	0.02495 (10)
S1	0.04950 (6)	1.18904 (3)	0.90838 (4)	0.01831 (15)
N1	-0.2275 (2)	0.76260 (12)	0.76957 (13)	0.0170 (4)
N2	-0.1987 (2)	1.05219 (11)	0.75708 (13)	0.0135 (4)
N3	-0.1441 (2)	1.12183 (11)	0.78721 (13)	0.0135 (4)
N4	-0.02113 (18)	1.03665 (11)	0.86394 (12)	0.0110 (4)
N5	0.0722 (2)	0.99264 (12)	0.92068 (13)	0.0165 (4)
C1	-0.1154 (3)	0.86370 (13)	0.86163 (16)	0.0157 (5)
H1	-0.0638	0.8787	0.9170	0.019*
C2	-0.1571 (3)	0.78812 (14)	0.84586 (17)	0.0185 (5)
H2	-0.1341	0.7521	0.8923	0.022*
C3	-0.2600 (2)	0.81462 (13)	0.70517 (17)	0.0178 (5)
H3A	-0.3098	0.7975	0.6502	0.021*
C4	-0.2249 (2)	0.89158 (13)	0.71470 (16)	0.0149 (5)
H4	-0.2511	0.9263	0.6673	0.018*
C5	-0.1507 (2)	0.91779 (13)	0.79426 (16)	0.0123 (5)
C6	-0.1234 (2)	1.00094 (13)	0.80478 (15)	0.0111 (4)
C7	-0.0371 (2)	1.11627 (13)	0.85297 (15)	0.0125 (5)
C8	0.1806 (2)	1.02341 (14)	0.96104 (16)	0.0177 (5)
H8	0.1978	1.0765	0.9533	0.021*
C9	0.2775 (2)	0.97532 (14)	1.01938 (15)	0.0158 (5)
C10	0.2607 (3)	0.89478 (14)	1.02189 (18)	0.0203 (5)

H10	0.1857	0.8714	0.9846	0.024*
C11	0.3519 (3)	0.84900 (15)	1.07796 (18)	0.0234 (6)
H11	0.3396	0.7946	1.0786	0.028*
C12	0.4613 (3)	0.88260 (16)	1.13319 (19)	0.0257 (6)
H12	0.5230	0.8511	1.1721	0.031*
C13	0.4808 (3)	0.96139 (16)	1.13185 (17)	0.0234 (6)
H13	0.5559	0.9843	1.1694	0.028*
C14	0.3892 (2)	1.00692 (14)	1.07490 (16)	0.0175 (5)
H3	-0.175 (3)	1.1661 (12)	0.761 (2)	0.049 (10)*

*Atomic displacement parameters (Å<sup>2</sup>)*

	$U^{11}$	$U^{22}$	$U^{33}$	$U^{12}$	$U^{13}$	$U^{23}$
Br1	0.01786 (15)	0.02020 (14)	0.03306 (18)	-0.00296 (10)	-0.00141 (11)	-0.00368 (11)
S1	0.0216 (3)	0.0097 (3)	0.0195 (3)	-0.0023 (2)	-0.0033 (3)	-0.0012 (2)
N1	0.0181 (11)	0.0111 (9)	0.0198 (12)	-0.0002 (8)	0.0006 (9)	-0.0007 (8)
N2	0.0148 (10)	0.0094 (9)	0.0149 (10)	-0.0007 (7)	0.0005 (8)	-0.0008 (8)
N3	0.0163 (10)	0.0082 (9)	0.0140 (11)	0.0002 (8)	-0.0005 (9)	0.0015 (8)
N4	0.0113 (9)	0.0078 (9)	0.0124 (10)	0.0010 (7)	-0.0001 (8)	0.0001 (8)
N5	0.0159 (10)	0.0134 (10)	0.0185 (11)	0.0026 (8)	0.0007 (9)	0.0012 (8)
C1	0.0190 (12)	0.0125 (10)	0.0135 (12)	-0.0014 (9)	-0.0003 (10)	0.0000 (9)
C2	0.0223 (13)	0.0137 (11)	0.0173 (13)	0.0006 (10)	0.0001 (11)	0.0031 (10)
C3	0.0193 (12)	0.0131 (11)	0.0187 (13)	-0.0028 (9)	0.0001 (10)	-0.0030 (10)
C4	0.0161 (12)	0.0144 (11)	0.0129 (12)	0.0004 (9)	0.0007 (10)	0.0025 (9)
C5	0.0095 (11)	0.0098 (10)	0.0168 (13)	0.0002 (8)	0.0017 (10)	-0.0006 (9)
C6	0.0108 (11)	0.0115 (10)	0.0106 (11)	-0.0002 (8)	0.0016 (9)	-0.0008 (9)
C7	0.0140 (11)	0.0098 (10)	0.0139 (12)	0.0003 (9)	0.0038 (10)	0.0015 (9)
C8	0.0162 (12)	0.0149 (11)	0.0206 (13)	0.0005 (9)	0.0017 (11)	-0.0011 (10)
C9	0.0143 (11)	0.0170 (11)	0.0159 (13)	0.0004 (9)	0.0032 (10)	0.0005 (10)
C10	0.0167 (12)	0.0197 (13)	0.0237 (15)	-0.0002 (10)	0.0032 (11)	-0.0007 (10)
C11	0.0266 (14)	0.0180 (13)	0.0257 (15)	0.0048 (11)	0.0064 (12)	0.0062 (11)
C12	0.0244 (14)	0.0285 (14)	0.0222 (15)	0.0100 (12)	0.0013 (12)	0.0065 (12)
C13	0.0157 (13)	0.0313 (15)	0.0207 (14)	0.0040 (11)	-0.0005 (11)	0.0001 (12)
C14	0.0169 (12)	0.0175 (12)	0.0183 (13)	0.0019 (10)	0.0043 (11)	-0.0003 (10)

*Geometric parameters (Å, °)*

Br1—C14	1.903 (3)	C3—H3A	0.9500
S1—C7	1.671 (2)	C4—C5	1.390 (3)
N1—C2	1.332 (3)	C4—H4	0.9500
N1—C3	1.343 (3)	C5—C6	1.468 (3)
N2—C6	1.300 (3)	C8—C9	1.457 (3)
N2—N3	1.369 (3)	C8—H8	0.9500
N3—C7	1.336 (3)	C9—C14	1.393 (3)
N3—H3	0.896 (10)	C9—C10	1.406 (3)
N4—N5	1.385 (3)	C10—C11	1.385 (4)
N4—C6	1.386 (3)	C10—H10	0.9500
N4—C7	1.393 (3)	C11—C12	1.389 (4)

N5—C8	1.274 (3)	C11—H11	0.9500
C1—C2	1.382 (3)	C12—C13	1.379 (4)
C1—C5	1.402 (3)	C12—H12	0.9500
C1—H1	0.9500	C13—C14	1.391 (3)
C2—H2	0.9500	C13—H13	0.9500
C3—C4	1.380 (3)		
C2—N1—C3	117.0 (2)	N4—C6—C5	127.6 (2)
C6—N2—N3	104.72 (19)	N3—C7—N4	102.8 (2)
C7—N3—N2	114.15 (19)	N3—C7—S1	127.00 (17)
C7—N3—H3	125 (2)	N4—C7—S1	130.19 (19)
N2—N3—H3	121 (2)	N5—C8—C9	118.5 (2)
N5—N4—C6	120.17 (18)	N5—C8—H8	120.7
N5—N4—C7	132.0 (2)	C9—C8—H8	120.7
C6—N4—C7	107.83 (19)	C14—C9—C10	117.5 (2)
C8—N5—N4	119.8 (2)	C14—C9—C8	121.7 (2)
C2—C1—C5	118.6 (2)	C10—C9—C8	120.8 (2)
C2—C1—H1	120.7	C11—C10—C9	120.9 (3)
C5—C1—H1	120.7	C11—C10—H10	119.5
N1—C2—C1	124.0 (2)	C9—C10—H10	119.5
N1—C2—H2	118.0	C10—C11—C12	120.0 (3)
C1—C2—H2	118.0	C10—C11—H11	120.0
N1—C3—C4	123.4 (2)	C12—C11—H11	120.0
N1—C3—H3A	118.3	C13—C12—C11	120.4 (3)
C4—C3—H3A	118.3	C13—C12—H12	119.8
C3—C4—C5	119.4 (2)	C11—C12—H12	119.8
C3—C4—H4	120.3	C12—C13—C14	119.3 (3)
C5—C4—H4	120.3	C12—C13—H13	120.4
C4—C5—C1	117.6 (2)	C14—C13—H13	120.4
C4—C5—C6	118.3 (2)	C13—C14—C9	121.9 (2)
C1—C5—C6	124.0 (2)	C13—C14—Br1	116.6 (2)
N2—C6—N4	110.48 (19)	C9—C14—Br1	121.48 (19)
N2—C6—C5	121.9 (2)		
C6—N2—N3—C7	-0.5 (3)	N2—N3—C7—N4	1.4 (3)
C6—N4—N5—C8	164.5 (2)	N2—N3—C7—S1	-176.78 (17)
C7—N4—N5—C8	-16.5 (3)	N5—N4—C7—N3	179.1 (2)
C3—N1—C2—C1	-0.7 (4)	C6—N4—C7—N3	-1.7 (2)
C5—C1—C2—N1	1.2 (4)	N5—N4—C7—S1	-2.8 (4)
C2—N1—C3—C4	-0.3 (4)	C6—N4—C7—S1	176.36 (18)
N1—C3—C4—C5	0.7 (4)	N4—N5—C8—C9	-179.17 (19)
C3—C4—C5—C1	-0.1 (3)	N5—C8—C9—C14	-170.6 (2)
C3—C4—C5—C6	-175.3 (2)	N5—C8—C9—C10	9.0 (4)
C2—C1—C5—C4	-0.8 (3)	C14—C9—C10—C11	0.3 (4)
C2—C1—C5—C6	174.1 (2)	C8—C9—C10—C11	-179.3 (2)
N3—N2—C6—N4	-0.7 (2)	C9—C10—C11—C12	0.5 (4)
N3—N2—C6—C5	178.5 (2)	C10—C11—C12—C13	-0.8 (4)
N5—N4—C6—N2	-179.16 (18)	C11—C12—C13—C14	0.4 (4)

C7—N4—C6—N2	1.6 (3)	C12—C13—C14—C9	0.4 (4)
N5—N4—C6—C5	1.7 (3)	C12—C13—C14—Br1	179.2 (2)
C7—N4—C6—C5	-177.5 (2)	C10—C9—C14—C13	-0.8 (4)
C4—C5—C6—N2	23.8 (3)	C8—C9—C14—C13	178.8 (2)
C1—C5—C6—N2	-151.0 (2)	C10—C9—C14—Br1	-179.52 (18)
C4—C5—C6—N4	-157.1 (2)	C8—C9—C14—Br1	0.1 (3)
C1—C5—C6—N4	28.0 (4)		

*Hydrogen-bond geometry (Å, °)*

<i>D</i> —H $\cdots$ <i>A</i>	<i>D</i> —H	H $\cdots$ <i>A</i>	<i>D</i> $\cdots$ <i>A</i>	<i>D</i> —H $\cdots$ <i>A</i>
N3—H3 $\cdots$ N1 <sup>i</sup>	0.90 (1)	1.95 (1)	2.821 (3)	163 (3)

Symmetry code: (i)  $-x-1/2, y+1/2, -z+3/2$ .