

Acta Crystallographica Section E

Structure Reports

Online

ISSN 1600-5368

1,4-Ditosyl-1,4-diazepane

Shuang-Hua Yang and Zhi-Wei Zhai*

Department of Environment Engineering and Chemistry, Luoyang Institute of Science and Technology, Luoyang 471023, People's Republic of China

Correspondence e-mail: zhaiw2005@126.com

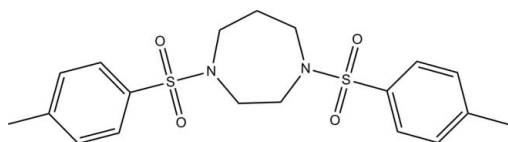
Received 20 April 2012; accepted 8 May 2012

Key indicators: single-crystal X-ray study; $T = 173$ K; mean $\sigma(\text{C}-\text{C}) = 0.004$ Å; disorder in main residue; R factor = 0.036; wR factor = 0.083; data-to-parameter ratio = 13.3.

In the title compound, $\text{C}_{19}\text{H}_{24}\text{N}_2\text{O}_4\text{S}_2$, the dihedral angle formed by the benzene rings is $82.88(7)^\circ$, and the molecular conformation is enforced by weak intramolecular $\text{C}-\text{H}\cdots\text{O}$ contacts. Two C atoms of the 1,4-diazepane ring are disordered over two sets of sites with a refined occupancy ratio of 0.534 (13):0.466 (13). In the crystal, molecules are linked by weak intermolecular $\text{C}-\text{H}\cdots\text{O}$ interactions into chains parallel to the a axis.

Related literature

For related structures, see: Romba *et al.* (2002). For the biological activity of heterocyclic compounds, see: Xu *et al.* (2006); Yu *et al.* (2009).



Experimental

Crystal data

 $\text{C}_{19}\text{H}_{24}\text{N}_2\text{O}_4\text{S}_2$ $M_r = 408.52$ Orthorhombic, $P2_12_12_1$ $a = 6.3407(13)$ Å $b = 10.367(2)$ Å $c = 30.516(6)$ Å $V = 2005.9(7)$ Å³ $Z = 4$ Mo $K\alpha$ radiation $\mu = 0.29$ mm⁻¹ $T = 173$ K $0.20 \times 0.20 \times 0.10$ mm

Data collection

Rigaku Mercury CCD/AFC diffractometer

Absorption correction: multi-scan (*CrystalClear*; Rigaku, 2007) $T_{\min} = 0.944$, $T_{\max} = 0.971$

11747 measured reflections

3531 independent reflections

3430 reflections with $I > 2\sigma(I)$ $R_{\text{int}} = 0.035$

Refinement

 $R[F^2 > 2\sigma(F^2)] = 0.036$ $wR(F^2) = 0.083$ $S = 1.07$

3531 reflections

265 parameters

6 restraints

H-atom parameters constrained

 $\Delta\rho_{\max} = 0.13$ e Å⁻³ $\Delta\rho_{\min} = -0.20$ e Å⁻³

Absolute structure: Flack (1983),

1442 Friedel pairs

Flack parameter: $-0.03(7)$

Table 1

Hydrogen-bond geometry (Å, °).

$D-H\cdots A$	$D-H$	$H\cdots A$	$D\cdots A$	$D-H\cdots A$
$\text{C10}-\text{H10B}\cdots\text{O3}$	0.97	2.40	2.886 (3)	110
$\text{C12}-\text{H12A}\cdots\text{O1}$	0.97	2.39	2.878 (3)	111
$\text{C10}-\text{H10B}\cdots\text{O4}^i$	0.97	2.52	3.142 (3)	122
$\text{C12}-\text{H12A}\cdots\text{O2}^i$	0.97	2.50	3.035 (3)	115

Symmetry code: (i) $x - 1, y, z$.

Data collection: *CrystalClear* (Rigaku, 2007); cell refinement: *CrystalClear*; data reduction: *CrystalClear*; program(s) used to solve structure: *SHELXS97* (Sheldrick, 2008); program(s) used to refine structure: *SHELXL97* (Sheldrick, 2008); molecular graphics: *SHELXTL* (Sheldrick, 2008); software used to prepare material for publication: *SHELXTL*.

Supplementary data and figures for this paper are available from the IUCr electronic archives (Reference: RZ2746).

References

- Flack, H. D. (1983). *Acta Cryst.* **A39**, 876–881.
 Rigaku (2007). *CrystalClear*. Rigaku Corporation, Tokyo, Japan.
 Romba, J., Steinhäuser, S. & Hegetschweiler, K. (2002). *Z. Kristallogr. New Cryst. Struct.* **217**, 133–134.
 Sheldrick, G. M. (2008). *Acta Cryst.* **A64**, 112–122.
 Xu, L. Z., Huang, Y. W., Yu, G. P., Si, G. D. & Zhu, Q. (2006). *Struct. Chem.* **17**, 235–239.
 Yu, G. P., Xu, L. Z., Yi, X., Bi, W. Z., Zhu, Q. & Zhai, Z. W. (2009). *J. Agric. Food Chem.* **57**, 4854–4860.

supporting information

Acta Cryst. (2012). E68, o1716 [doi:10.1107/S1600536812020958]

1,4-Ditosyl-1,4-diazepane

Shuang-Hua Yang and Zhi-Wei Zhai

S1. Comment

Many heterocyclic compounds have been widely used as potent and broad-spectrum fungicides (Xu *et al.*, 2006; Yu *et al.*, 2009). In order to search for new heterocyclic compounds with higher biological activities, we synthesized the title compound and describe its structure herein.

In title compound (Fig. 1), all bond lengths are normal and in a good agreement with those reported for related compounds (Romba *et al.*, 2002). Two atoms (C8 and C9) of the 1,4-diazepane ring are disordered over two orientations with refined occupancy ratio of 0.466 (13)/0.534 (13). The dihedral angle formed by the phenyl rings is 82.88 (7)°. The molecular conformation is stabilized by intramolecular C—H···O hydrogen bonds (Table 1). In the crystal packing, molecules are linked by intermolecular C—H···O hydrogen bonds to form chains parallel to the *a* axis.

S2. Experimental

NaH (1.9 g, 0.08 mol) was dissolved in 30 ml DMF and cooled with an ice bath, then *N,N'*-di(*p*-toluenesulfonyl)-ethane-1,2-diamine (7.4 g, 0.02 mol) in 10 ml DMF was added dropwise to the solution. After stirring 30 min, 1,3-dibromopropane in 5 ml DMF was added dropwise and the resulting suspension stirred overnight at room temperature. The residue was quenched by saturated NH₄Cl and extracted with ethyl acetate (3 × 200 ml). The combined organic layer was washed with saturated NaCl and dried over sodium sulfate. The solvent was removed and the residue was recrystallized from EtOH/DMF (5:1 *v/v*) to give the title compound (6.7 g, 82%). Single crystals suitable for X-ray measurements were obtained by recrystallization from acetonitrile at room temperature.

S3. Refinement

H atoms were positioned geometrically and refined using a riding model, with C—H = 0.95 or 0.99 Å and with $U_{\text{iso}}(\text{H}) = 1.2$ times $U_{\text{eq}}(\text{C})$ for methylene H atoms and $1.5U_{\text{eq}}(\text{C})$ for the methyl H atoms. Distance constraints (N—C = 1.47 (1) Å; C—C = 1.52 (1) Å) were applied to the disordered atoms C8 and C9.

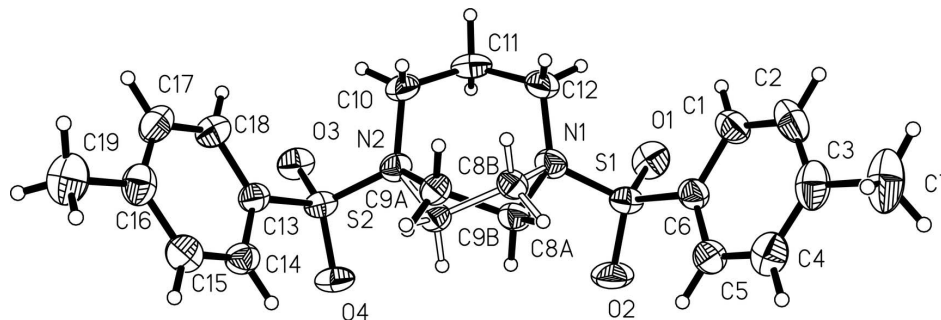


Figure 1

The molecular structure of the title compound, with 40% probability displacement ellipsoids.

1,4-Ditosyl-1,4-diazepane*Crystal data*

$C_{19}H_{24}N_2O_4S_2$

$M_r = 408.52$

Orthorhombic, $P2_12_12_1$

Hall symbol: P 2ac 2ab

$a = 6.3407$ (13) Å

$b = 10.367$ (2) Å

$c = 30.516$ (6) Å

$V = 2005.9$ (7) Å³

$Z = 4$

$F(000) = 864$

$D_x = 1.353$ Mg m⁻³

Mo $K\alpha$ radiation, $\lambda = 0.71073$ Å

Cell parameters from 7269 reflections

$\theta = 1.7$ – 27.5°

$\mu = 0.29$ mm⁻¹

$T = 173$ K

Block, colourless

$0.20 \times 0.20 \times 0.10$ mm

Data collection

Rigaku Mercury CCD/AFC
diffractometer

Radiation source: Sealed Tube

Graphite Monochromator monochromator

φ and ω scans

Absorption correction: multi-scan

(*CrystalClear*; Rigaku, 2007)

$T_{\min} = 0.944$, $T_{\max} = 0.971$

11747 measured reflections

3531 independent reflections

3430 reflections with $I > 2\sigma(I)$

$R_{\text{int}} = 0.035$

$\theta_{\max} = 25.0^\circ$, $\theta_{\min} = 2.8^\circ$

$h = -7 \rightarrow 7$

$k = -8 \rightarrow 12$

$l = -36 \rightarrow 35$

Refinement

Refinement on F^2

Least-squares matrix: full

$R[F^2 > 2\sigma(F^2)] = 0.036$

$wR(F^2) = 0.083$

$S = 1.07$

3531 reflections

265 parameters

6 restraints

Primary atom site location: structure-invariant
direct methods

Secondary atom site location: difference Fourier
map

Hydrogen site location: inferred from
neighbouring sites

H-atom parameters constrained

$w = 1/[\sigma^2(F_o^2) + (0.035P)^2 + 0.4874P]$

where $P = (F_o^2 + 2F_c^2)/3$

$(\Delta/\sigma)_{\max} < 0.001$

$\Delta\rho_{\max} = 0.13$ e Å⁻³

$\Delta\rho_{\min} = -0.20$ e Å⁻³

Absolute structure: Flack (1983), 1442 Friedel
pairs

Absolute structure parameter: -0.03 (7)

Special details

Geometry. All e.s.d.'s (except the e.s.d. in the dihedral angle between two l.s. planes) are estimated using the full covariance matrix. The cell e.s.d.'s are taken into account individually in the estimation of e.s.d.'s in distances, angles and torsion angles; correlations between e.s.d.'s in cell parameters are only used when they are defined by crystal symmetry. An approximate (isotropic) treatment of cell e.s.d.'s is used for estimating e.s.d.'s involving l.s. planes.

Refinement. Refinement of F^2 against ALL reflections. The weighted R -factor wR and goodness of fit S are based on F^2 , conventional R -factors R are based on F , with F set to zero for negative F^2 . The threshold expression of $F^2 > \sigma(F^2)$ is used only for calculating R -factors(gt) etc. and is not relevant to the choice of reflections for refinement. R -factors based on F^2 are statistically about twice as large as those based on F , and R -factors based on ALL data will be even larger.

Fractional atomic coordinates and isotropic or equivalent isotropic displacement parameters (\AA^2)

	<i>x</i>	<i>y</i>	<i>z</i>	$U_{\text{iso}}^*/U_{\text{eq}}$	Occ. (<1)
S1	0.84854 (9)	-0.00702 (6)	0.40081 (2)	0.04437 (16)	
S2	0.83732 (9)	0.12928 (5)	0.22154 (2)	0.03921 (15)	
O1	0.7421 (3)	0.08375 (18)	0.42783 (6)	0.0594 (5)	
O2	1.0685 (3)	0.0089 (2)	0.39251 (7)	0.0716 (6)	
O3	0.7251 (3)	0.24688 (15)	0.21378 (6)	0.0501 (4)	
O4	1.0600 (2)	0.13432 (18)	0.22902 (6)	0.0532 (5)	
N1	0.7323 (3)	-0.0080 (2)	0.35377 (6)	0.0439 (5)	
N2	0.7313 (3)	0.06018 (17)	0.26359 (6)	0.0388 (5)	
C1	0.6335 (4)	-0.1951 (3)	0.44536 (8)	0.0511 (6)	
H1	0.5214	-0.1374	0.4464	0.061*	
C2	0.6164 (5)	-0.3155 (3)	0.46458 (8)	0.0603 (8)	
H2	0.4911	-0.3386	0.4783	0.072*	
C3	0.7831 (6)	-0.4029 (3)	0.46375 (8)	0.0618 (8)	
C4	0.9649 (5)	-0.3682 (3)	0.44218 (9)	0.0589 (7)	
H4	1.0765	-0.4263	0.4408	0.071*	
C5	0.9853 (4)	-0.2489 (3)	0.42246 (8)	0.0495 (6)	
H5	1.1091	-0.2274	0.4079	0.059*	
C6	0.8205 (4)	-0.1615 (2)	0.42453 (7)	0.0419 (5)	
C8A	0.8715 (15)	-0.0801 (9)	0.3232 (2)	0.044 (2)	0.466 (13)
H8A1	0.8801	-0.1695	0.3323	0.053*	0.466 (13)
H8A2	1.0125	-0.0438	0.3241	0.053*	0.466 (13)
C9A	0.7867 (18)	-0.0729 (7)	0.2768 (3)	0.040 (2)	0.466 (13)
H9A1	0.8920	-0.1065	0.2568	0.048*	0.466 (13)
H9A2	0.6624	-0.1270	0.2745	0.048*	0.466 (13)
C8B	0.7774 (14)	-0.1092 (6)	0.31983 (19)	0.0377 (15)	0.534 (13)
H8B1	0.6480	-0.1544	0.3126	0.045*	0.534 (13)
H8B2	0.8765	-0.1714	0.3316	0.045*	0.534 (13)
C9B	0.8687 (11)	-0.0489 (7)	0.2785 (3)	0.0353 (17)	0.534 (13)
H9B1	1.0098	-0.0173	0.2844	0.042*	0.534 (13)
H9B2	0.8778	-0.1135	0.2556	0.042*	0.534 (13)
C10	0.5022 (4)	0.0686 (3)	0.26975 (8)	0.0517 (7)	
H10A	0.4390	-0.0144	0.2633	0.062*	
H10B	0.4447	0.1312	0.2494	0.062*	
C11	0.4459 (4)	0.1078 (3)	0.31613 (9)	0.0518 (7)	
H11A	0.5150	0.1891	0.3226	0.062*	
H11B	0.2950	0.1226	0.3175	0.062*	
C12	0.5040 (4)	0.0126 (3)	0.35127 (8)	0.0536 (7)	
H12A	0.4535	0.0438	0.3793	0.064*	
H12B	0.4350	-0.0691	0.3453	0.064*	
C13	0.7984 (4)	0.0278 (2)	0.17594 (7)	0.0394 (5)	
C14	0.9546 (4)	-0.0588 (2)	0.16374 (8)	0.0449 (6)	
H14	1.0803	-0.0630	0.1794	0.054*	
C15	0.9215 (4)	-0.1392 (3)	0.12792 (8)	0.0515 (6)	
H15	1.0266	-0.1968	0.1196	0.062*	
C16	0.7342 (5)	-0.1350 (3)	0.10436 (9)	0.0521 (6)	

C17	0.5795 (4)	-0.0506 (3)	0.11791 (9)	0.0543 (7)
H17	0.4521	-0.0486	0.1028	0.065*
C18	0.6080 (4)	0.0313 (2)	0.15328 (8)	0.0469 (6)
H18	0.5015	0.0877	0.1618	0.056*
C19	0.7052 (6)	-0.2180 (3)	0.06426 (9)	0.0691 (9)
H19A	0.5637	-0.2509	0.0636	0.104*
H19B	0.8030	-0.2887	0.0652	0.104*
H19C	0.7305	-0.1673	0.0385	0.104*
C7	0.7658 (6)	-0.5318 (3)	0.48659 (10)	0.0877 (12)
H7A	0.7705	-0.5997	0.4652	0.131*
H7B	0.6349	-0.5359	0.5023	0.131*
H7C	0.8810	-0.5415	0.5067	0.131*

Atomic displacement parameters (Å²)

	U^{11}	U^{22}	U^{33}	U^{12}	U^{13}	U^{23}
S1	0.0326 (3)	0.0467 (3)	0.0537 (3)	-0.0031 (3)	0.0021 (3)	0.0001 (3)
S2	0.0305 (3)	0.0333 (3)	0.0538 (3)	-0.0003 (2)	-0.0042 (3)	0.0032 (3)
O1	0.0676 (13)	0.0522 (11)	0.0584 (11)	0.0016 (9)	-0.0065 (9)	-0.0171 (9)
O2	0.0299 (9)	0.0798 (14)	0.1052 (15)	-0.0070 (10)	0.0024 (10)	0.0327 (13)
O3	0.0498 (10)	0.0296 (8)	0.0710 (12)	0.0033 (7)	-0.0041 (9)	0.0093 (8)
O4	0.0271 (8)	0.0608 (11)	0.0717 (12)	-0.0036 (8)	-0.0061 (8)	-0.0080 (10)
N1	0.0411 (11)	0.0450 (11)	0.0457 (10)	0.0089 (9)	0.0087 (9)	-0.0023 (10)
N2	0.0373 (11)	0.0326 (10)	0.0464 (11)	0.0048 (8)	-0.0031 (9)	0.0025 (9)
C1	0.0479 (15)	0.0597 (16)	0.0458 (13)	-0.0042 (13)	0.0092 (12)	-0.0037 (12)
C2	0.073 (2)	0.0680 (18)	0.0401 (14)	-0.0238 (16)	0.0104 (14)	-0.0042 (13)
C3	0.094 (2)	0.0522 (16)	0.0395 (14)	-0.0121 (16)	-0.0093 (15)	-0.0031 (12)
C4	0.077 (2)	0.0505 (15)	0.0497 (15)	0.0081 (16)	-0.0049 (14)	-0.0054 (13)
C5	0.0482 (15)	0.0590 (16)	0.0413 (14)	0.0046 (13)	0.0025 (12)	-0.0031 (12)
C6	0.0394 (13)	0.0492 (14)	0.0370 (12)	-0.0026 (11)	0.0018 (11)	-0.0036 (10)
C8A	0.035 (4)	0.050 (4)	0.048 (4)	0.011 (4)	0.005 (3)	0.006 (3)
C9A	0.046 (5)	0.031 (3)	0.043 (4)	-0.001 (3)	-0.004 (4)	0.001 (3)
C8B	0.036 (4)	0.041 (3)	0.036 (3)	0.002 (3)	0.003 (3)	-0.005 (2)
C9B	0.035 (4)	0.030 (3)	0.041 (3)	0.006 (2)	-0.001 (3)	0.001 (3)
C10	0.0334 (13)	0.0642 (17)	0.0576 (16)	-0.0106 (12)	-0.0099 (11)	0.0107 (14)
C11	0.0268 (11)	0.0530 (16)	0.0758 (18)	0.0059 (11)	-0.0004 (12)	-0.0106 (13)
C12	0.0353 (13)	0.0765 (19)	0.0491 (14)	-0.0133 (13)	0.0033 (11)	-0.0035 (15)
C13	0.0356 (12)	0.0383 (12)	0.0442 (12)	-0.0016 (10)	-0.0024 (10)	0.0101 (10)
C14	0.0402 (13)	0.0438 (13)	0.0506 (14)	0.0029 (11)	-0.0007 (12)	0.0061 (12)
C15	0.0561 (16)	0.0442 (14)	0.0543 (15)	0.0045 (13)	0.0055 (13)	0.0047 (13)
C16	0.0640 (17)	0.0446 (13)	0.0477 (14)	-0.0054 (13)	-0.0038 (13)	0.0051 (13)
C17	0.0542 (16)	0.0577 (16)	0.0511 (14)	-0.0062 (13)	-0.0158 (13)	0.0090 (13)
C18	0.0413 (14)	0.0464 (14)	0.0529 (14)	0.0032 (11)	-0.0066 (11)	0.0019 (11)
C19	0.092 (2)	0.0543 (17)	0.0613 (18)	-0.0067 (17)	-0.0096 (17)	-0.0056 (14)
C7	0.140 (4)	0.063 (2)	0.0591 (18)	-0.028 (2)	-0.021 (2)	0.0131 (15)

Geometric parameters (Å, °)

S1—O1	1.4216 (19)	C8B—C9B	1.522 (7)
S1—O2	1.4273 (18)	C8B—H8B1	0.9700
S1—N1	1.614 (2)	C8B—H8B2	0.9700
S1—C6	1.766 (2)	C9B—H9B1	0.9700
S2—O4	1.4313 (17)	C9B—H9B2	0.9700
S2—O3	1.4313 (16)	C10—C11	1.515 (4)
S2—N2	1.616 (2)	C10—H10A	0.9700
S2—C13	1.762 (2)	C10—H10B	0.9700
N1—C12	1.465 (3)	C11—C12	1.504 (4)
N1—C8A	1.486 (6)	C11—H11A	0.9700
N1—C8B	1.502 (5)	C11—H11B	0.9700
N2—C10	1.467 (3)	C12—H12A	0.9700
N2—C9A	1.480 (7)	C12—H12B	0.9700
N2—C9B	1.499 (6)	C13—C14	1.388 (3)
C1—C2	1.384 (4)	C13—C18	1.392 (3)
C1—C6	1.389 (4)	C14—C15	1.391 (4)
C1—H1	0.9300	C14—H14	0.9300
C2—C3	1.392 (4)	C15—C16	1.389 (4)
C2—H2	0.9300	C15—H15	0.9300
C3—C4	1.375 (4)	C16—C17	1.378 (4)
C3—C7	1.511 (4)	C16—C19	1.507 (4)
C4—C5	1.381 (4)	C17—C18	1.385 (4)
C4—H4	0.9300	C17—H17	0.9300
C5—C6	1.385 (3)	C18—H18	0.9300
C5—H5	0.9300	C19—H19A	0.9600
C8A—C9A	1.516 (8)	C19—H19B	0.9600
C8A—H8A1	0.9700	C19—H19C	0.9600
C8A—H8A2	0.9700	C7—H7A	0.9600
C9A—H9A1	0.9700	C7—H7B	0.9600
C9A—H9A2	0.9700	C7—H7C	0.9600
O1—S1—O2	119.36 (13)	C9B—C8B—H8B2	109.5
O1—S1—N1	107.66 (11)	H8B1—C8B—H8B2	108.0
O2—S1—N1	106.80 (12)	N2—C9B—C8B	109.9 (5)
O1—S1—C6	108.33 (12)	N2—C9B—H9B1	109.7
O2—S1—C6	106.02 (12)	C8B—C9B—H9B1	109.7
N1—S1—C6	108.25 (11)	N2—C9B—H9B2	109.7
O4—S2—O3	119.05 (11)	C8B—C9B—H9B2	109.7
O4—S2—N2	107.45 (11)	H9B1—C9B—H9B2	108.2
O3—S2—N2	107.59 (10)	N2—C10—C11	111.7 (2)
O4—S2—C13	106.62 (11)	N2—C10—H10A	109.3
O3—S2—C13	107.95 (11)	C11—C10—H10A	109.3
N2—S2—C13	107.71 (10)	N2—C10—H10B	109.3
C12—N1—C8A	128.8 (4)	C11—C10—H10B	109.3
C12—N1—C8B	104.7 (4)	H10A—C10—H10B	107.9
C12—N1—S1	119.77 (16)	C12—C11—C10	115.6 (2)

C8A—N1—S1	106.9 (3)	C12—C11—H11A	108.4
C8B—N1—S1	122.1 (3)	C10—C11—H11A	108.4
C10—N2—C9A	104.8 (5)	C12—C11—H11B	108.4
C10—N2—C9B	125.6 (3)	C10—C11—H11B	108.4
C10—N2—S2	119.14 (16)	H11A—C11—H11B	107.4
C9A—N2—S2	122.1 (5)	N1—C12—C11	112.0 (2)
C9B—N2—S2	109.5 (3)	N1—C12—H12A	109.2
C2—C1—C6	119.2 (3)	C11—C12—H12A	109.2
C2—C1—H1	120.4	N1—C12—H12B	109.2
C6—C1—H1	120.4	C11—C12—H12B	109.2
C1—C2—C3	121.3 (3)	H12A—C12—H12B	107.9
C1—C2—H2	119.3	C14—C13—C18	120.2 (2)
C3—C2—H2	119.3	C14—C13—S2	119.87 (18)
C4—C3—C2	118.4 (3)	C18—C13—S2	119.90 (19)
C4—C3—C7	120.9 (3)	C13—C14—C15	119.4 (2)
C2—C3—C7	120.8 (3)	C13—C14—H14	120.3
C3—C4—C5	121.4 (3)	C15—C14—H14	120.3
C3—C4—H4	119.3	C16—C15—C14	121.1 (3)
C5—C4—H4	119.3	C16—C15—H15	119.4
C4—C5—C6	119.7 (3)	C14—C15—H15	119.4
C4—C5—H5	120.1	C17—C16—C15	118.3 (3)
C6—C5—H5	120.1	C17—C16—C19	121.3 (3)
C5—C6—C1	120.0 (2)	C15—C16—C19	120.5 (3)
C5—C6—S1	119.9 (2)	C16—C17—C18	122.0 (3)
C1—C6—S1	120.1 (2)	C16—C17—H17	119.0
N1—C8A—C9A	110.6 (7)	C18—C17—H17	119.0
N1—C8A—H8A1	109.5	C17—C18—C13	119.0 (2)
C9A—C8A—H8A1	109.5	C17—C18—H18	120.5
N1—C8A—H8A2	109.5	C13—C18—H18	120.5
C9A—C8A—H8A2	109.5	C16—C19—H19A	109.5
H8A1—C8A—H8A2	108.1	C16—C19—H19B	109.5
N2—C9A—C8A	112.6 (6)	H19A—C19—H19B	109.5
N2—C9A—H9A1	109.1	C16—C19—H19C	109.5
C8A—C9A—H9A1	109.1	H19A—C19—H19C	109.5
N2—C9A—H9A2	109.1	H19B—C19—H19C	109.5
C8A—C9A—H9A2	109.1	C3—C7—H7A	109.5
H9A1—C9A—H9A2	107.8	C3—C7—H7B	109.5
N1—C8B—C9B	110.9 (6)	H7A—C7—H7B	109.5
N1—C8B—H8B1	109.5	C3—C7—H7C	109.5
C9B—C8B—H8B1	109.5	H7A—C7—H7C	109.5
N1—C8B—H8B2	109.5	H7B—C7—H7C	109.5
O1—S1—N1—C12	-34.0 (3)	S1—N1—C8A—C9A	-173.6 (8)
O2—S1—N1—C12	-163.3 (2)	C10—N2—C9A—C8A	-98.8 (10)
C6—S1—N1—C12	82.9 (2)	C9B—N2—C9A—C8A	60.8 (13)
O1—S1—N1—C8A	167.7 (5)	S2—N2—C9A—C8A	121.8 (9)
O2—S1—N1—C8A	38.4 (5)	N1—C8A—C9A—N2	48.4 (15)
C6—S1—N1—C8A	-75.4 (5)	C12—N1—C8B—C9B	101.7 (7)

O1—S1—N1—C8B	-168.7 (4)	C8A—N1—C8B—C9B	-57.8 (9)
O2—S1—N1—C8B	62.0 (4)	S1—N1—C8B—C9B	-118.0 (6)
C6—S1—N1—C8B	-51.8 (4)	C10—N2—C9B—C8B	-30.9 (10)
O4—S2—N2—C10	165.87 (18)	C9A—N2—C9B—C8B	-55.4 (14)
O3—S2—N2—C10	36.5 (2)	S2—N2—C9B—C8B	176.4 (6)
C13—S2—N2—C10	-79.6 (2)	N1—C8B—C9B—N2	-51.2 (11)
O4—S2—N2—C9A	-60.1 (4)	C9A—N2—C10—C11	87.3 (4)
O3—S2—N2—C9A	170.6 (4)	C9B—N2—C10—C11	77.9 (6)
C13—S2—N2—C9A	54.4 (4)	S2—N2—C10—C11	-131.8 (2)
O4—S2—N2—C9B	-39.4 (4)	N2—C10—C11—C12	-65.3 (3)
O3—S2—N2—C9B	-168.8 (4)	C8A—N1—C12—C11	-73.4 (6)
C13—S2—N2—C9B	75.1 (4)	C8B—N1—C12—C11	-84.8 (3)
C6—C1—C2—C3	0.5 (4)	S1—N1—C12—C11	133.74 (19)
C1—C2—C3—C4	-1.8 (4)	C10—C11—C12—N1	62.6 (3)
C1—C2—C3—C7	177.3 (3)	O4—S2—C13—C14	20.1 (2)
C2—C3—C4—C5	1.3 (4)	O3—S2—C13—C14	149.10 (19)
C7—C3—C4—C5	-177.7 (3)	N2—S2—C13—C14	-95.0 (2)
C3—C4—C5—C6	0.4 (4)	O4—S2—C13—C18	-162.33 (19)
C4—C5—C6—C1	-1.7 (4)	O3—S2—C13—C18	-33.3 (2)
C4—C5—C6—S1	178.10 (19)	N2—S2—C13—C18	82.6 (2)
C2—C1—C6—C5	1.2 (4)	C18—C13—C14—C15	1.9 (4)
C2—C1—C6—S1	-178.58 (19)	S2—C13—C14—C15	179.45 (18)
O1—S1—C6—C5	-143.5 (2)	C13—C14—C15—C16	-0.5 (4)
O2—S1—C6—C5	-14.2 (2)	C14—C15—C16—C17	-1.3 (4)
N1—S1—C6—C5	100.1 (2)	C14—C15—C16—C19	176.9 (2)
O1—S1—C6—C1	36.3 (2)	C15—C16—C17—C18	1.6 (4)
O2—S1—C6—C1	165.6 (2)	C19—C16—C17—C18	-176.5 (3)
N1—S1—C6—C1	-80.1 (2)	C16—C17—C18—C13	-0.3 (4)
C12—N1—C8A—C9A	30.8 (12)	C14—C13—C18—C17	-1.5 (4)
C8B—N1—C8A—C9A	56.6 (10)	S2—C13—C18—C17	-179.09 (19)

Hydrogen-bond geometry (\AA , $^\circ$)

$D-H\cdots A$	$D-H$	$H\cdots A$	$D\cdots A$	$D-H\cdots A$
C10—H10B \cdots O3	0.97	2.40	2.886 (3)	110
C12—H12A \cdots O1	0.97	2.39	2.878 (3)	111
C10—H10B \cdots O4 ⁱ	0.97	2.52	3.142 (3)	122
C12—H12A \cdots O2 ⁱ	0.97	2.50	3.035 (3)	115

Symmetry code: (i) $x-1, y, z$.