

Acta Crystallographica Section E

Structure Reports

Online

ISSN 1600-5368

4-Phenethoxyaniline hemihydrate

Toheed Akhter,^a Humaira Masood Siddiqi,^{a*} Zareen Akhter^a and Vickie McKee^b^aDepartment of Chemistry, Quaid-I-Azam University, Islamabad 45320, Pakistan, and ^bChemistry Department, Loughborough University, Loughborough LE11 3TU, England

Correspondence e-mail: humaira_siddiqi@yahoo.com

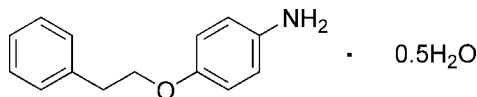
Received 3 May 2012; accepted 19 May 2012

Key indicators: single-crystal X-ray study; $T = 150$ K; mean $\sigma(\text{C}-\text{C}) = 0.003$ Å; R factor = 0.041; wR factor = 0.115; data-to-parameter ratio = 10.3.

The crystal structure of the title compound, $\text{C}_{14}\text{H}_{15}\text{NO} \cdot 0.5\text{H}_2\text{O}$, features $\text{N}-\text{H} \cdots \text{O}$ and $\text{O}-\text{H} \cdots \text{N}$ hydrogen bonds between the amino group and water molecule of crystallization, which generate a chain along the c axis. The water molecule lies on a twofold rotation axis. A $\text{C}-\text{H} \cdots \pi$ interaction is observed between the phenyl and aniline rings. The angle between the mean planes of the phenyl rings is $72.51(7)^\circ$.

Related literature

For a similar hydrogen-bonding pattern in a related structure see Haider *et al.* (2011). The title compound is a precursor of diamine monomers, which are widely used for synthesis of polyimides (PIs), see: Ragosta *et al.* (2011). For the solubility of PIs, see: Chang *et al.* (2010). Reduced solubility is associated with intermolecular hydrogen-bonding chains and stiffness, see: Hsiao & Leu (2004); Liaw *et al.* (2005). Incorporation of bulky pendant groups such as substituted phenyl groups into a rigid PI backbone can enhance the solubility of PIs, see: Liaw *et al.* (2005); Li *et al.* (2007).



Experimental

Crystal data

 $\text{C}_{14}\text{H}_{15}\text{NO} \cdot 0.5\text{H}_2\text{O}$ $M_r = 222.28$ Orthorhombic, $Pcc2$
 $a = 11.6046(8)$ Å
 $b = 13.1937(10)$ Å
 $c = 7.9114(6)$ Å
 $V = 1211.30(15)$ Å³ $Z = 4$ Mo $K\alpha$ radiation $\mu = 0.08$ mm⁻¹ $T = 150$ K $0.37 \times 0.26 \times 0.11$ mm

Data collection

 Bruker APEXII CCD diffractometer
 Absorption correction: multi-scan (SADABS; Sheldrick, 2008)
 $T_{\min} = 0.971$, $T_{\max} = 0.991$

 11920 measured reflections
 1633 independent reflections
 1443 reflections with $I > 2\sigma(I)$
 $R_{\text{int}} = 0.035$

Refinement

 $R[F^2 > 2\sigma(F^2)] = 0.041$ $wR(F^2) = 0.115$ $S = 1.09$

1633 reflections

159 parameters

6 restraints

H atoms treated by a mixture of independent and constrained refinement

 $\Delta\rho_{\text{max}} = 0.20$ e Å⁻³ $\Delta\rho_{\text{min}} = -0.31$ e Å⁻³

Table 1

Hydrogen-bond geometry (Å, °).

C_g is the centroid of the C1–C6 ring.

$D-H \cdots A$	$D-H$	$H \cdots A$	$D \cdots A$	$D-H \cdots A$
$\text{N1}-\text{H1A} \cdots \text{O1W}^i$	0.83 (2)	2.20 (2)	3.011 (4)	166 (4)
$\text{O1W}-\text{H1W} \cdots \text{N1}$	0.87 (2)	1.92 (2)	2.791 (4)	171 (3)
$\text{C14}-\text{H14} \cdots \text{Cg}^{ii}$	0.95	2.64	3.586 (3)	173

Symmetry codes: (i) $x, -y + 1, z + \frac{1}{2}$; (ii) $x, -y + 2, z + \frac{3}{2}$.

Data collection: APEX2 (Bruker, 1998); cell refinement: SAINT (Bruker, 1998); data reduction: SAINT; program(s) used to solve structure: SHELXS97 (Sheldrick, 2008); program(s) used to refine structure: SHELXL97 (Sheldrick, 2008); molecular graphics: SHELXTL (Sheldrick, 2008); software used to prepare material for publication: SHELXTL.

The authors are grateful to the Department of Chemistry, Quaid-i-Azam University, Islamabad, Pakistan, for providing laboratory facilities to carry out this work.

Supplementary data and figures for this paper are available from the IUCr electronic archives (Reference: KP2413).

References

- Bruker (1998). APEX2 and SAINT. Bruker AXS Inc., Madison, Wisconsin, USA.
- Chang, C. H., Wang, K. L., Jiang, J. C., Liawa, D. J., Lee, K. R., Lai, J. Y. & Lai, K. H. (2010). *Polymer*, **51**, 4493–4502.
- Haider, A., Akhter, Z., Jabeen, F., Janjua, N. K. & Bolte, M. (2011). *J. Mol. Struct.* **994**, 242–247.
- Hsiao, S. H. & Leu, W. T. (2004). *Eur. Polym. J.* **40**, 2471–2480.
- Li, W., Li, S., Zhang, Q. & Zhang, S. (2007). *Macromolecules*, **40**, 8205–8211.
- Liaw, D. J., Chang, F. C., Leung, M., Chou, M. Y. & Muellen, K. (2005). *Macromolecules*, **38**, 4024–4029.
- Ragosta, G., Musto, P., Abbate, M. & Scarinzi, G. (2011). *J. Appl. Polym. Sci.* **121**, 2168–2186.
- Sheldrick, G. M. (2008). *Acta Cryst.* **A64**, 112–122.

supporting information

Acta Cryst. (2012). E68, o1912 [doi:10.1107/S1600536812022994]

4-Phenethoxyaniline hemihydrate

Toheed Akhter, Humaira Masood Siddiqi, Zareen Akhter and Vickie McKee

S1. Comment

The title compound is a precursor of diamine monomers which are widely used for synthesis of polyimides (PIs) (Ragosta *et al.*, 2011). Solubility of PIs is considered as one of the key property when they are used for their specific application (Chang *et al.*, 2010). Reduced solubility is associated with intermolecular hydrogen bonding chain and stiffness (Hsiao and Leu, 2004, Liaw *et al.*, 2005). Incorporation of bulky pendant groups such as substituted phenyl groups into rigid PI backbone can enhance the solubility of PIs (Liaw *et al.*, 2005, Li *et al.*, 2007). Synthesis of the title compound is aimed for introducing pendant substituted phenyl group into PI backbone and thereby improving their solubility.

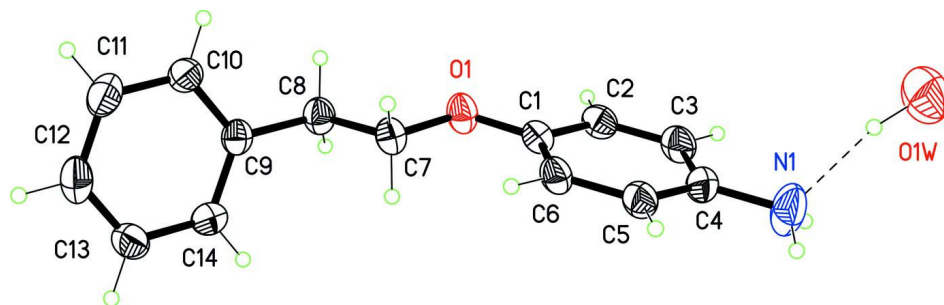
Within the 1-amino-4-phenethoxybenzene molecule the two phenyl rings are tilted with respect to one another; the angle between the mean planes of the phenyl groups is 72.51 (7)° (Fig 1). The crystal structure is governed by hydrogen bonds between water molecule and the –NH₂ group (Table 1, Fig. 2) generating hydrogen bonded chains running parallel to the *c* axis (Fig. 2). There is also a C—H··· π interaction (Fig 3).

S2. Experimental

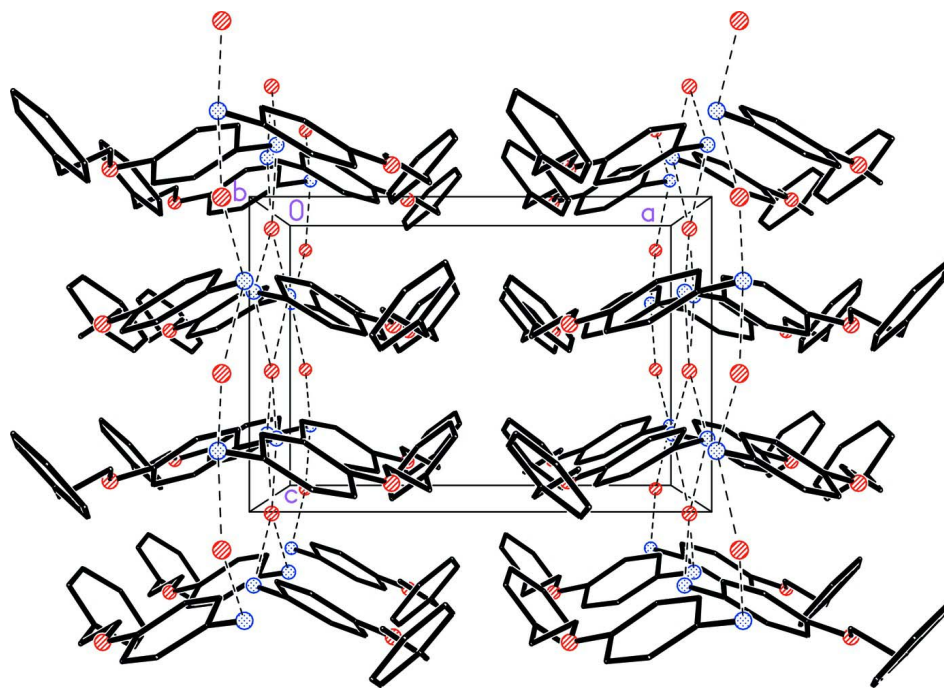
A mixture of 2-phenylethanol (5 g, 40.92 mmol), anhydrous potassium carbonate (5.68 g, 40.92 mmol) and dimethyl formamide (DMF, 60 mL) was stirred for 1 h in three-necked round bottom flask under the inert atmosphere of nitrogen. Afterward solution of 1-fluoro-4-nitrobenzene in DMF was added drop wise and the reaction mixture was refluxed for 24 h at 393 K. After complete consumption of reactants, light yellow colour product was precipitated by pouring the reaction mixture into distilled water (500 mL). The crude product, after filtration and washing thoroughly with distilled water, was recrystallised from possible minimum volume of absolute ethanol. Yield was 81%.

S3. Refinement

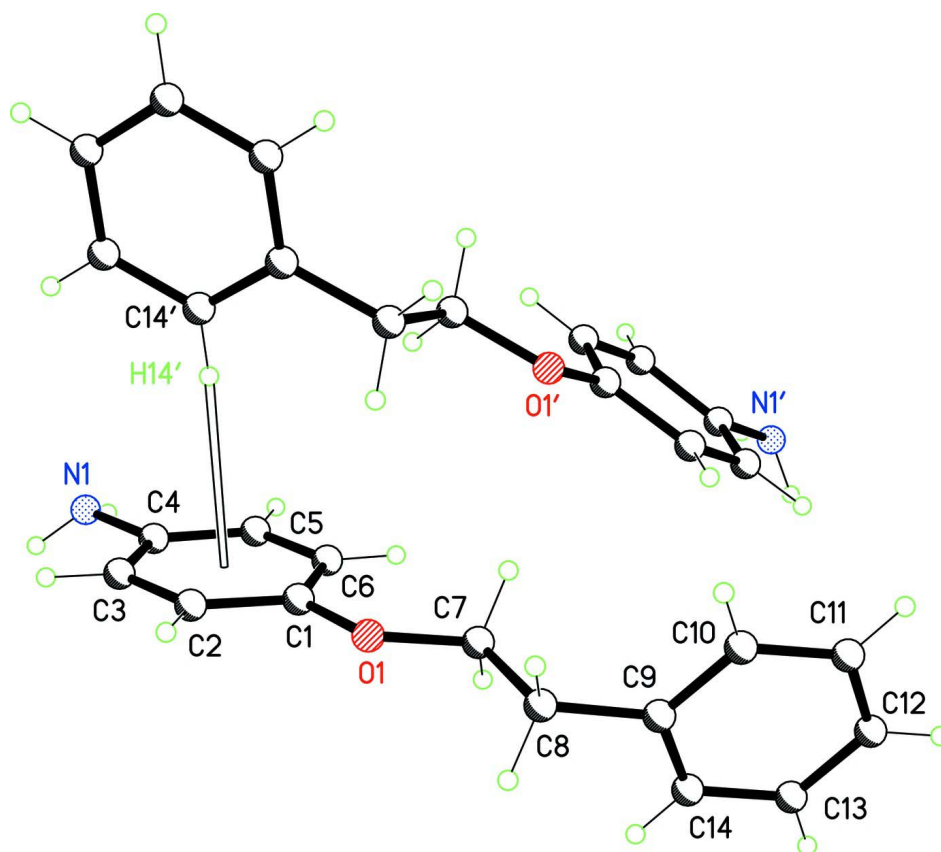
H atoms bonded to C atoms were inserted at calculated positions with C—H distances of 0.95 and 0.99 Å for aromatic and methylene C atoms, respectively. They were refined using a riding model with $U_{\text{iso}}(\text{H}) = 1.2U_{\text{eq}}(\text{C})$. H atoms bonded to O and N were located from difference maps and their coordinated refined under geometric restraints, with $U_{\text{iso}}(\text{H}) = 1.5U_{\text{eq}}(\text{N or O})$.

**Figure 1**

The view of the asymmetric unit (O1W lies on a 2-fold axis). H-bond shown as a dashed line and thermal ellipsoids shown at 50% probability.

**Figure 2**

Packing diagram showing the H-bonded chains parallel to the *c* axis. H atoms omitted for clarity.

**Figure 3**

C—H \cdots π interaction: C14 \cdots Cg (C1-C6) is 3.586 (3) Å.

4-Phenethoxyaniline hemihydrate

Crystal data

$C_{14}H_{15}NO \cdot 0.5H_2O$
 $M_r = 222.28$
 Orthorhombic, *Pcc2*
 Hall symbol: P 2 -2c
 $a = 11.6046$ (8) Å
 $b = 13.1937$ (10) Å
 $c = 7.9114$ (6) Å
 $V = 1211.30$ (15) Å³
 $Z = 4$

$F(000) = 476$
 $D_x = 1.219$ Mg m⁻³
 Mo $K\alpha$ radiation, $\lambda = 0.71073$ Å
 Cell parameters from 2822 reflections
 $\theta = 3.1$ – 24.1°
 $\mu = 0.08$ mm⁻¹
 $T = 150$ K
 Block, colourless
 $0.37 \times 0.26 \times 0.11$ mm

Data collection

Bruker APEXII CCD
 diffractometer
 Radiation source: fine-focus sealed tube
 Graphite monochromator
 ω rotation with narrow frames scans
 Absorption correction: multi-scan
 (*SADABS*; Sheldrick, 2008)
 $T_{\min} = 0.971$, $T_{\max} = 0.991$

11920 measured reflections
 1633 independent reflections
 1443 reflections with $I > 2\sigma(I)$
 $R_{\text{int}} = 0.035$
 $\theta_{\text{max}} = 28.3^\circ$, $\theta_{\text{min}} = 1.5^\circ$
 $h = -15 \rightarrow 15$
 $k = -17 \rightarrow 17$
 $l = -10 \rightarrow 10$

Refinement

Refinement on F^2	Secondary atom site location: difference Fourier map
Least-squares matrix: full	Hydrogen site location: inferred from neighbouring sites
$R[F^2 > 2\sigma(F^2)] = 0.041$	H atoms treated by a mixture of independent and constrained refinement
$wR(F^2) = 0.115$	$w = 1/[\sigma^2(F_o^2) + (0.0593P)^2 + 0.2388P]$
$S = 1.09$	where $P = (F_o^2 + 2F_c^2)/3$
1633 reflections	$(\Delta/\sigma)_{\max} < 0.001$
159 parameters	$\Delta\rho_{\max} = 0.20 \text{ e } \text{\AA}^{-3}$
6 restraints	$\Delta\rho_{\min} = -0.31 \text{ e } \text{\AA}^{-3}$
Primary atom site location: structure-invariant direct methods	

Special details

Geometry. All e.s.d.'s (except the e.s.d. in the dihedral angle between two l.s. planes) are estimated using the full covariance matrix. The cell e.s.d.'s are taken into account individually in the estimation of e.s.d.'s in distances, angles and torsion angles; correlations between e.s.d.'s in cell parameters are only used when they are defined by crystal symmetry. An approximate (isotropic) treatment of cell e.s.d.'s is used for estimating e.s.d.'s involving l.s. planes.

Refinement. Refinement of F^2 against ALL reflections. The weighted R -factor wR and goodness of fit S are based on F^2 , conventional R -factors R are based on F , with F set to zero for negative F^2 . The threshold expression of $F^2 > \sigma(F^2)$ is used only for calculating R -factors(gt) etc. and is not relevant to the choice of reflections for refinement. R -factors based on F^2 are statistically about twice as large as those based on F , and R -factors based on ALL data will be even larger. Freidel equivalents merged since the data do not permit determination of absolute configuration.

Fractional atomic coordinates and isotropic or equivalent isotropic displacement parameters (\AA^2)

	x	y	z	$U_{\text{iso}}^*/U_{\text{eq}}$	Occ. (<1)
O1	0.69069 (13)	0.95389 (11)	0.9053 (2)	0.0359 (4)	
C1	0.77654 (19)	0.88571 (15)	0.8679 (3)	0.0300 (4)	
C2	0.7603 (2)	0.78822 (16)	0.9316 (3)	0.0335 (5)	
H2	0.6926	0.7727	0.9940	0.040*	
C3	0.8422 (2)	0.71407 (16)	0.9041 (3)	0.0371 (5)	
H3	0.8301	0.6478	0.9477	0.044*	
C4	0.94237 (19)	0.73527 (16)	0.8132 (3)	0.0367 (5)	
N1	1.0264 (2)	0.65890 (16)	0.7857 (5)	0.0583 (8)	
H1B	1.091 (2)	0.680 (3)	0.766 (5)	0.087*	
H1A	1.024 (3)	0.623 (3)	0.872 (4)	0.087*	
C5	0.95608 (19)	0.83219 (15)	0.7463 (4)	0.0350 (5)	
H5	1.0226	0.8473	0.6810	0.042*	
C6	0.87417 (18)	0.90678 (15)	0.7735 (3)	0.0321 (5)	
H6	0.8850	0.9726	0.7273	0.039*	
C7	0.70920 (19)	1.05805 (15)	0.8599 (3)	0.0313 (5)	
H7A	0.7072	1.0661	0.7355	0.038*	
H7B	0.7851	1.0815	0.9016	0.038*	
C8	0.61305 (18)	1.11875 (16)	0.9413 (3)	0.0340 (5)	
H8A	0.5377	1.0935	0.9003	0.041*	
H8B	0.6156	1.1093	1.0654	0.041*	
C9	0.62423 (18)	1.23026 (15)	0.9003 (3)	0.0290 (4)	
C10	0.5572 (2)	1.27416 (17)	0.7746 (3)	0.0354 (5)	
H10	0.5018	1.2342	0.7165	0.042*	

C11	0.5704 (2)	1.37604 (18)	0.7328 (3)	0.0421 (6)	
H11	0.5251	1.4049	0.6451	0.051*	
C12	0.6490 (2)	1.43509 (18)	0.8186 (4)	0.0423 (6)	
H12	0.6577	1.5047	0.7905	0.051*	
C13	0.71508 (19)	1.39267 (18)	0.9455 (4)	0.0408 (6)	
H13	0.7687	1.4334	1.0055	0.049*	
C14	0.70341 (19)	1.29072 (18)	0.9856 (3)	0.0346 (5)	
H14	0.7499	1.2620	1.0720	0.042*	
O1W	1.0000	0.5000	0.5561 (6)	0.0725 (10)	
H1W	1.005 (5)	0.5538 (8)	0.620 (4)	0.109*	
X1A	0.8586	0.8104	0.8394	0.040*	0.00

Atomic displacement parameters (Å²)

	U^{11}	U^{22}	U^{33}	U^{12}	U^{13}	U^{23}
O1	0.0365 (8)	0.0254 (7)	0.0457 (10)	−0.0005 (6)	0.0102 (8)	0.0010 (7)
C1	0.0334 (10)	0.0252 (9)	0.0313 (10)	−0.0025 (8)	0.0001 (9)	−0.0028 (8)
C2	0.0362 (11)	0.0304 (11)	0.0338 (12)	−0.0068 (8)	0.0013 (10)	0.0018 (9)
C3	0.0451 (12)	0.0250 (10)	0.0411 (12)	−0.0050 (9)	−0.0031 (11)	0.0062 (9)
C4	0.0345 (11)	0.0266 (10)	0.0490 (14)	0.0016 (8)	−0.0050 (11)	−0.0002 (10)
N1	0.0451 (13)	0.0311 (10)	0.099 (2)	0.0077 (9)	0.0094 (15)	0.0114 (13)
C5	0.0325 (10)	0.0277 (10)	0.0448 (13)	−0.0040 (8)	0.0026 (10)	−0.0010 (10)
C6	0.0359 (11)	0.0228 (9)	0.0377 (11)	−0.0032 (8)	0.0038 (10)	−0.0001 (9)
C7	0.0354 (10)	0.0251 (9)	0.0334 (11)	0.0000 (8)	0.0044 (9)	0.0000 (8)
C8	0.0325 (10)	0.0294 (10)	0.0400 (13)	0.0011 (8)	0.0055 (10)	−0.0002 (9)
C9	0.0282 (9)	0.0291 (9)	0.0296 (10)	0.0041 (8)	0.0058 (8)	−0.0020 (9)
C10	0.0358 (11)	0.0363 (11)	0.0340 (12)	0.0072 (9)	−0.0064 (10)	−0.0084 (9)
C11	0.0477 (14)	0.0405 (12)	0.0382 (13)	0.0155 (11)	−0.0042 (11)	0.0002 (11)
C12	0.0456 (13)	0.0281 (10)	0.0532 (16)	0.0072 (9)	0.0074 (12)	0.0018 (11)
C13	0.0329 (11)	0.0350 (11)	0.0546 (16)	−0.0039 (9)	−0.0013 (11)	−0.0069 (11)
C14	0.0298 (10)	0.0376 (11)	0.0364 (12)	0.0005 (9)	−0.0043 (9)	0.0003 (10)
O1W	0.083 (2)	0.0438 (14)	0.090 (3)	−0.004 (2)	0.000	0.000

Geometric parameters (Å, °)

O1—C1	1.374 (3)	C8—C9	1.512 (3)
O1—C7	1.437 (2)	C8—H8A	0.9900
C1—C6	1.385 (3)	C8—H8B	0.9900
C1—C2	1.394 (3)	C9—C10	1.389 (3)
C2—C3	1.381 (3)	C9—C14	1.391 (3)
C2—H2	0.9500	C10—C11	1.393 (3)
C3—C4	1.396 (3)	C10—H10	0.9500
C3—H3	0.9500	C11—C12	1.378 (4)
C4—C5	1.393 (3)	C11—H11	0.9500
C4—N1	1.419 (3)	C12—C13	1.382 (4)
N1—H1B	0.818 (18)	C12—H12	0.9500
N1—H1A	0.834 (18)	C13—C14	1.389 (3)
C5—C6	1.385 (3)	C13—H13	0.9500

C5—H5	0.9500	C14—H14	0.9500
C6—H6	0.9500	O1W—H1W	0.873 (19)
C7—C8	1.517 (3)	X1A—H14 ⁱ	2.6415
C7—H7A	0.9900	X1A—C14 ⁱ	3.586 (2)
C7—H7B	0.9900		
C1—O1—C7	117.64 (17)	H7A—C7—H7B	108.6
O1—C1—C6	125.28 (18)	C9—C8—C7	111.07 (17)
O1—C1—C2	115.34 (19)	C9—C8—H8A	109.4
C6—C1—C2	119.4 (2)	C7—C8—H8A	109.4
C3—C2—C1	120.2 (2)	C9—C8—H8B	109.4
C3—C2—H2	119.9	C7—C8—H8B	109.4
C1—C2—H2	119.9	H8A—C8—H8B	108.0
C2—C3—C4	120.8 (2)	C10—C9—C14	118.5 (2)
C2—C3—H3	119.6	C10—C9—C8	120.7 (2)
C4—C3—H3	119.6	C14—C9—C8	120.7 (2)
C5—C4—C3	118.4 (2)	C9—C10—C11	120.8 (2)
C5—C4—N1	121.0 (2)	C9—C10—H10	119.6
C3—C4—N1	120.6 (2)	C11—C10—H10	119.6
C4—N1—H1B	115 (3)	C12—C11—C10	120.1 (2)
C4—N1—H1A	104 (3)	C12—C11—H11	120.0
H1B—N1—H1A	112 (3)	C10—C11—H11	120.0
C6—C5—C4	121.0 (2)	C11—C12—C13	119.7 (2)
C6—C5—H5	119.5	C11—C12—H12	120.1
C4—C5—H5	119.5	C13—C12—H12	120.1
C1—C6—C5	120.2 (2)	C12—C13—C14	120.3 (2)
C1—C6—H6	119.9	C12—C13—H13	119.9
C5—C6—H6	119.9	C14—C13—H13	119.9
O1—C7—C8	106.79 (17)	C13—C14—C9	120.6 (2)
O1—C7—H7A	110.4	C13—C14—H14	119.7
C8—C7—H7A	110.4	C9—C14—H14	119.7
O1—C7—H7B	110.4	H14 ⁱ —X1A—C14 ⁱ	1.9
C8—C7—H7B	110.4		

Symmetry code: (i) $x, -y+2, z-1/2$.

Hydrogen-bond geometry (\AA , $^\circ$)

C_g is the centroid of the C1—C6 ring.

$D-H\cdots A$	$D-H$	$H\cdots A$	$D\cdots A$	$D-H\cdots A$
N1—H1A \cdots O1W ⁱⁱ	0.83 (2)	2.20 (2)	3.011 (4)	166 (4)
O1W—H1W \cdots N1	0.87 (2)	1.92 (2)	2.791 (4)	171 (3)
C14—H14 \cdots Cg ⁱⁱⁱ	0.95	2.64	3.586 (3)	173

Symmetry codes: (ii) $x, -y+1, z+1/2$; (iii) $x, -y+2, z+3/2$.