

Acta Crystallographica Section E

Structure Reports

Online

ISSN 1600-5368

6-(4-Bromophenyl)-3-methyl-7H-1,2,4-triazolo[3,4-b][1,3,4]thiadiazine

 Hoong-Kun Fun,^{a*} Ching Kheng Quah,^{a§} Hatem A. Abdel-Aziz^b and Mohamed I. Attia^b

^aX-ray Crystallography Unit, School of Physics, Universiti Sains Malaysia, 11800 USM, Penang, Malaysia, and ^bDepartment of Pharmaceutical Chemistry, College of Pharmacy, King Saud University, PO Box 2457, Riyadh 11451, Saudi Arabia
Correspondence e-mail: hkfun@usm.my

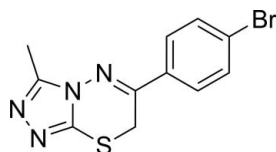
Received 30 April 2012; accepted 3 May 2012

Key indicators: single-crystal X-ray study; $T = 100$ K; mean $\sigma(\text{C}-\text{C}) = 0.012$ Å; R factor = 0.057; wR factor = 0.152; data-to-parameter ratio = 14.0.

In the title compound, $\text{C}_{11}\text{H}_9\text{BrN}_4\text{S}$, the 1,2,4-triazole ring is essentially planar (r.m.s. deviation = 0.020 Å) and makes a dihedral angle of 29.1 (5)° with the bromobenzene ring. The 3,6-dihydro-1,3,4-thiadiazine ring adopts a twist-boat conformation. In the crystal, molecules are linked by $\text{C}-\text{H}\cdots\text{N}$ interactions into sheets lying parallel to the (010) plane. The same N atom accepts two such hydrogen bonds.

Related literature

For general background to and the chemistry and biological activity of the title compound, see: Holla *et al.* (2001); Prasad *et al.* (1998); Dawood *et al.* (2005); Abdel-Aziz *et al.* (2007); Abdel-Wahab *et al.* (2009). For further synthesis details, see: Dickinson & Jacobsen (1975). For standard bond-length data, see: Allen *et al.* (1987). For the stability of the temperature controller used in the data collection, see: Cosier & Glazer (1986). For ring conformations, see: Cremer & Pople (1975).



Experimental

Crystal data

| | |
|---|-----------------------------------|
| $\text{C}_{11}\text{H}_9\text{BrN}_4\text{S}$ | $V = 579.7$ (2) Å ³ |
| $M_r = 309.19$ | $Z = 2$ |
| Monoclinic, Pc | Mo $K\alpha$ radiation |
| $a = 4.0047$ (10) Å | $\mu = 3.71$ mm ⁻¹ |
| $b = 13.424$ (3) Å | $T = 100$ K |
| $c = 10.938$ (3) Å | $0.46 \times 0.10 \times 0.03$ mm |
| $\beta = 99.650$ (5)° | |

Data collection

| | |
|--|--|
| Bruker SMART APEXII CCD diffractometer | 5127 measured reflections |
| Absorption correction: multi-scan (SADABS; Bruker, 2009) | 2087 independent reflections |
| $T_{\min} = 0.281$, $T_{\max} = 0.910$ | 1904 reflections with $I > 2\sigma(I)$ |
| | $R_{\text{int}} = 0.048$ |

Refinement

| | |
|---------------------------------|---|
| $R[F^2 > 2\sigma(F^2)] = 0.057$ | H-atom parameters constrained |
| $wR(F^2) = 0.152$ | $\Delta\rho_{\text{max}} = 3.33$ e Å ⁻³ |
| $S = 1.04$ | $\Delta\rho_{\text{min}} = -0.86$ e Å ⁻³ |
| 2087 reflections | Absolute structure: Flack (1983), |
| 149 parameters | 950 Friedel pairs |
| 2 restraints | Flack parameter: 0.01 (2) |

Table 1

Hydrogen-bond geometry (Å, °).

| $D-\text{H}\cdots A$ | $D-\text{H}$ | $\text{H}\cdots A$ | $D\cdots A$ | $D-\text{H}\cdots A$ |
|--|--------------|--------------------|-------------|----------------------|
| $\text{C8}-\text{H8A}\cdots\text{N3}^i$ | 0.97 | 2.56 | 3.185 (12) | 122 |
| $\text{C8}-\text{H8B}\cdots\text{N3}^{ii}$ | 0.97 | 2.31 | 3.191 (12) | 151 |

 Symmetry codes: (i) $x, -y, z + \frac{1}{2}$; (ii) $x + 1, -y, z + \frac{1}{2}$

Data collection: *APEX2* (Bruker, 2009); cell refinement: *SAINT* (Bruker, 2009); data reduction: *SAINT*; program(s) used to solve structure: *SHELXTL* (Sheldrick, 2008); program(s) used to refine structure: *SHELXTL*; molecular graphics: *SHELXTL*; software used to prepare material for publication: *SHELXTL* and *PLATON* (Spek, 2009).

The authors thank Universiti Sains Malaysia for the Research University Grant (No. 1001/PFIZIK/811160) and the Deanship of Scientific Research and the Research Center, College of Pharmacy, King Saud University.

Supplementary data and figures for this paper are available from the IUCr electronic archives (Reference: HB6774).

References

- Abdel-Aziz, H. A., Hamdy, N. A., Farag, A. M. & Fakhr, I. M. I. (2007). *J. Chin. Chem. Soc.* **54**, 1573–1582.
- Abdel-Wahab, B. F., Abdel-Aziz, H. A. & Ahmed, E. M. (2009). *Monatsh. Chem.* **140**, 601–605.
- Allen, F. H., Kennard, O., Watson, D. G., Brammer, L., Orpen, A. G. & Taylor, R. (1987). *J. Chem. Soc. Perkin Trans. 2*, pp. S1–19.
- Bruker (2009). *APEX2*, *SAINT* and *SADABS*. Bruker AXS Inc., Madison, Wisconsin, USA.
- Cosier, J. & Glazer, A. M. (1986). *J. Appl. Cryst.* **19**, 105–107.
- Cremer, D. & Pople, J. A. (1975). *J. Am. Chem. Soc.* **97**, 1354–1358.
- Dawood, K. M., Farag, A. M. & Abdel-Aziz, H. A. (2005). *Heteroat. Chem.* **16**, 621–627.
- Dickinson, R. G. & Jacobsen, N. W. (1975). *Aust. J. Chem.* **28**, 2435–2446.
- Flack, H. D. (1983). *Acta Cryst.* **A39**, 876–881.
- Holla, B. S., Akberali, P. M. & Shivananda, M. K. (2001). *Il Farmaco*, **56**, 919–927.
- Prasad, A. R., Ramalingam, T., Rao, A. B., Diwan, P. V. & Sattur, P. B. (1998). *Eur. J. Med. Chem.* **24**, 199–201.
- Sheldrick, G. M. (2008). *Acta Cryst.* **A64**, 112–122.
- Spek, A. L. (2009). *Acta Cryst.* **D65**, 148–155.

* Thomson Reuters ResearcherID: A-3561-2009.

§ Thomson Reuters ResearcherID: A-5525-2009.

supporting information

Acta Cryst. (2012). E68, o1681 [doi:10.1107/S1600536812019885]

6-(4-Bromophenyl)-3-methyl-7H-1,2,4-triazolo[3,4-*b*][1,3,4]thiadiazine**Hoong-Kun Fun, Ching Kheng Quah, Hatem A. Abdel-Aziz and Mohamed I. Attia****S1. Comment**

For the background of the chemistry of 1,2,4-triazolo[3,4-*b*]-1,3,4-thiadiazine derivatives see: Holla *et al.* (2001) & Prasad *et al.* (1998). In continuation of our studies in the chemistry and biological activities of the title compound analogs (Dawood *et al.*, 2005; Abdel-Aziz *et al.*, 2007 & Abdel-Wahab *et al.*, 2009), we reported the synthesis and crystal structure of the title compound.

In the title compound, Fig. 1, the 1,2,4-triazole (N2-N4/C9/C10) is essentially planar (r.m.s. deviation = 0.020 Å) and makes a dihedral angle of 29.1 (5)° with the phenyl ring (C1-C6). The 3,6-dihydro-1,3,4-thiadiazine ring (S1/N1/N2/C7-C9) adopts a twist-boat conformation, with puckering parameters $Q = 0.552$ (8) Å, $\Theta = 66.6$ (9)° and $\varphi = 32.5$ (10)° (Cremer & Pople, 1975). Bond lengths (Allen *et al.*, 1987) and angles are within normal ranges.

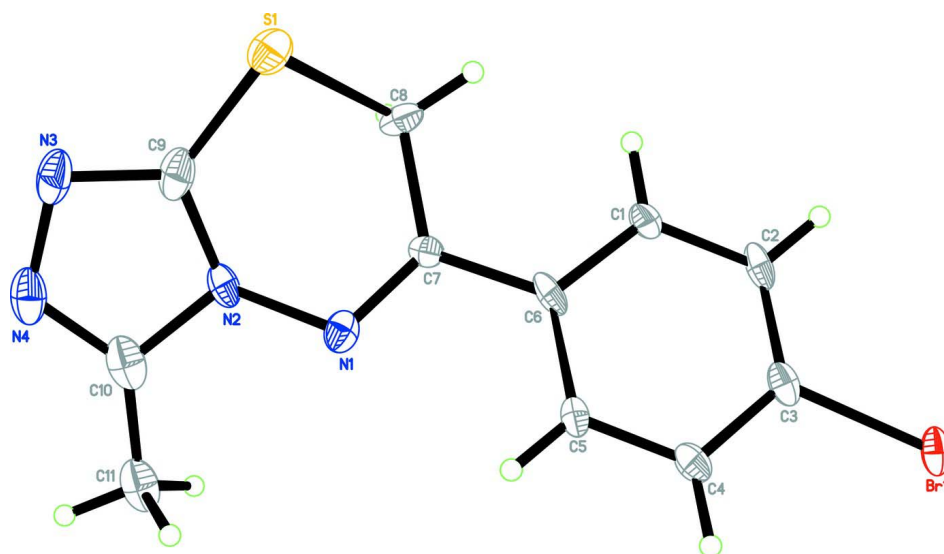
In the crystal (Fig.2), molecules are linked *via* C8–H8A···N3 and C8–H8B···N3 bonds (Table 1) into sheets parallel to the (010) plane.

S2. Experimental

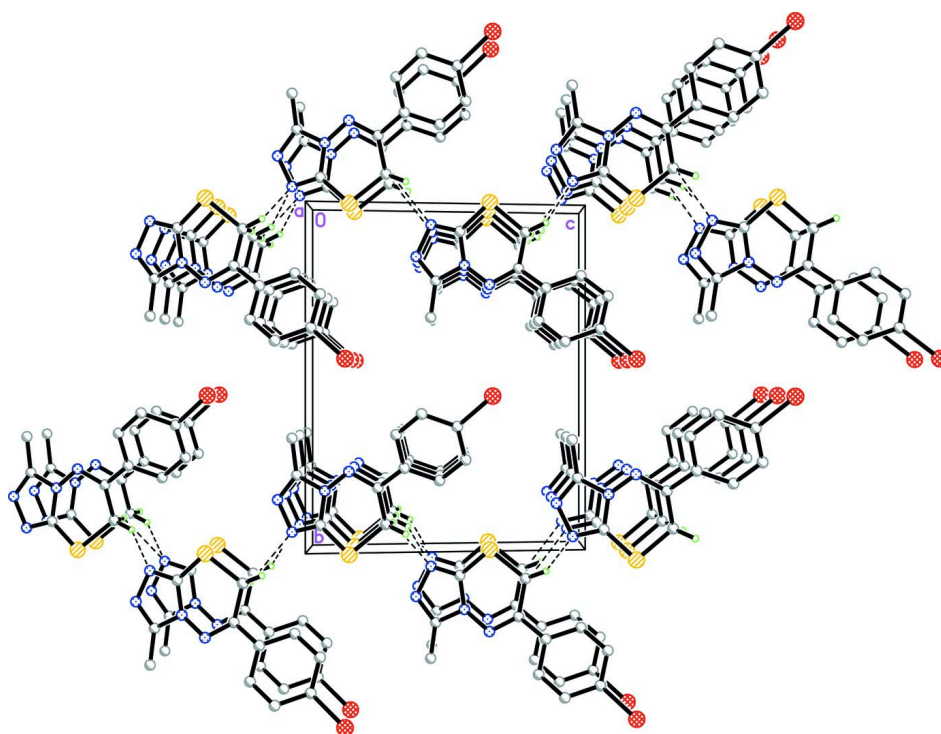
The reaction of 4-amino-5-methyl-4*H*-1,2,4-triazole-3-thiol and 2-bromo-1-phenylethanone afforded the title compound in the form of colourless plates according to the reported method (Dickinson & Jacobsen, 1975).

S3. Refinement

All H atoms were positioned geometrically and refined using a riding model with C–H = 0.93–0.97 Å and $U_{\text{iso}}(\text{H}) = 1.2$ or $1.5 U_{\text{eq}}(\text{C})$. A rotating-group model was applied for the methyl group. The same U_{ij} parameters were used for atom pair C10/C11. The highest difference peak is 0.97 Å from Br1. The deepest difference hole is 0.89 Å from Br1.

**Figure 1**

The molecular structure of the title compound showing 50% probability displacement ellipsoids for non-H atoms.

**Figure 2**

The crystal structure of the title compound, viewed along the *a* axis. H atoms not involved in hydrogen bonds (dashed lines) have been omitted for clarity.

6-(4-Bromophenyl)-3-methyl-7H-1,2,4-triazolo[3,4-b][1,3,4]thiadiazine*Crystal data*C₁₁H₉BrN₄S $M_r = 309.19$ Monoclinic, *Pc*

Hall symbol: P -2yc

 $a = 4.0047 (10) \text{ \AA}$ $b = 13.424 (3) \text{ \AA}$ $c = 10.938 (3) \text{ \AA}$ $\beta = 99.650 (5)^\circ$ $V = 579.7 (2) \text{ \AA}^3$ $Z = 2$ $F(000) = 308$ $D_x = 1.771 \text{ Mg m}^{-3}$ Mo $K\alpha$ radiation, $\lambda = 0.71073 \text{ \AA}$

Cell parameters from 2139 reflections

 $\theta = 2.4\text{--}27.8^\circ$ $\mu = 3.71 \text{ mm}^{-1}$ $T = 100 \text{ K}$

Plate, colourless

 $0.46 \times 0.10 \times 0.03 \text{ mm}$ *Data collection*

Bruker SMART APEXII CCD

diffractometer

Radiation source: fine-focus sealed tube

Graphite monochromator

 φ and ω scans

Absorption correction: multi-scan

(SADABS; Bruker, 2009)

 $T_{\min} = 0.281$, $T_{\max} = 0.910$

5127 measured reflections

2087 independent reflections

1904 reflections with $I > 2\sigma(I)$ $R_{\text{int}} = 0.048$ $\theta_{\max} = 26.0^\circ$, $\theta_{\min} = 1.5^\circ$ $h = -4 \rightarrow 4$ $k = -15 \rightarrow 16$ $l = -13 \rightarrow 12$ *Refinement*Refinement on F^2

Least-squares matrix: full

 $R[F^2 > 2\sigma(F^2)] = 0.057$ $wR(F^2) = 0.152$ $S = 1.04$

2087 reflections

149 parameters

2 restraints

Primary atom site location: structure-invariant

direct methods

Secondary atom site location: difference Fourier

map

Hydrogen site location: inferred from

neighbouring sites

H-atom parameters constrained

 $w = 1/[\sigma^2(F_o^2) + (0.1109P)^2]$ where $P = (F_o^2 + 2F_c^2)/3$ $(\Delta/\sigma)_{\max} = 0.001$ $\Delta\rho_{\max} = 3.33 \text{ e \AA}^{-3}$ $\Delta\rho_{\min} = -0.86 \text{ e \AA}^{-3}$

Absolute structure: Flack (1983), 950 Friedel

pairs

Absolute structure parameter: 0.01 (2)

Special details

Experimental. The crystal was placed in the cold stream of an Oxford Cryosystems Cobra open-flow nitrogen cryostat (Cosier & Glazer, 1986) operating at 100.0 (1) K.

Geometry. All esds (except the esd in the dihedral angle between two l.s. planes) are estimated using the full covariance matrix. The cell esds are taken into account individually in the estimation of esds in distances, angles and torsion angles; correlations between esds in cell parameters are only used when they are defined by crystal symmetry. An approximate (isotropic) treatment of cell esds is used for estimating esds involving l.s. planes.

Refinement. Refinement of F^2 against ALL reflections. The weighted R-factor wR and goodness of fit S are based on F^2 , conventional R-factors R are based on F , with F set to zero for negative F^2 . The threshold expression of $F^2 > 2\sigma(F^2)$ is used only for calculating R-factors(gt) etc. and is not relevant to the choice of reflections for refinement. R-factors based on F^2 are statistically about twice as large as those based on F , and R-factors based on ALL data will be even larger.

Fractional atomic coordinates and isotropic or equivalent isotropic displacement parameters (\AA^2)

| | <i>x</i> | <i>y</i> | <i>z</i> | $U_{\text{iso}}^*/U_{\text{eq}}$ |
|----|------------|---------------|------------|----------------------------------|
| S1 | 0.0080 (5) | -0.00421 (15) | 0.6539 (3) | 0.0264 (5) |

| | | | | |
|------|--------------|-------------|-------------|-------------|
| Br1 | 0.93512 (13) | 0.44899 (5) | 1.15745 (9) | 0.0234 (3) |
| N1 | -0.0050 (18) | 0.2320 (5) | 0.6525 (9) | 0.0191 (15) |
| N2 | -0.2131 (19) | 0.1740 (6) | 0.5631 (6) | 0.0203 (16) |
| N3 | -0.420 (2) | 0.0529 (5) | 0.4417 (8) | 0.0308 (18) |
| N4 | -0.5398 (18) | 0.1444 (6) | 0.3863 (7) | 0.0288 (16) |
| C1 | 0.406 (2) | 0.2109 (6) | 0.9745 (7) | 0.0188 (15) |
| H1A | 0.3374 | 0.1478 | 0.9953 | 0.023* |
| C2 | 0.592 (2) | 0.2704 (6) | 1.0655 (7) | 0.0212 (16) |
| H2A | 0.6494 | 0.2466 | 1.1462 | 0.025* |
| C3 | 0.6906 (19) | 0.3639 (6) | 1.0365 (7) | 0.0193 (16) |
| C4 | 0.622 (2) | 0.3988 (6) | 0.9129 (7) | 0.0215 (16) |
| H4A | 0.7033 | 0.4603 | 0.8919 | 0.026* |
| C5 | 0.4312 (19) | 0.3397 (6) | 0.8237 (7) | 0.0175 (15) |
| H5A | 0.3756 | 0.3639 | 0.7432 | 0.021* |
| C6 | 0.319 (2) | 0.2450 (7) | 0.8506 (8) | 0.0194 (18) |
| C7 | 0.106 (2) | 0.1867 (6) | 0.7562 (8) | 0.0178 (18) |
| C8 | 0.006 (2) | 0.0807 (7) | 0.7828 (9) | 0.0220 (18) |
| H8A | -0.2194 | 0.0815 | 0.8044 | 0.026* |
| H8B | 0.1608 | 0.0559 | 0.8540 | 0.026* |
| C9 | -0.225 (3) | 0.0749 (8) | 0.5464 (9) | 0.026 (2) |
| C10 | -0.406 (2) | 0.2173 (7) | 0.4581 (9) | 0.0256 (14) |
| C11 | -0.458 (2) | 0.3240 (7) | 0.4400 (9) | 0.0256 (14) |
| H11A | -0.5670 | 0.3365 | 0.3564 | 0.038* |
| H11B | -0.2431 | 0.3574 | 0.4552 | 0.038* |
| H11C | -0.5981 | 0.3484 | 0.4966 | 0.038* |

Atomic displacement parameters (\AA^2)

| | U^{11} | U^{22} | U^{33} | U^{12} | U^{13} | U^{23} |
|-----|-------------|-------------|-------------|-------------|-------------|-------------|
| S1 | 0.0275 (13) | 0.0247 (10) | 0.0279 (10) | 0.0019 (7) | 0.0075 (10) | -0.0060 (9) |
| Br1 | 0.0201 (4) | 0.0356 (4) | 0.0131 (4) | -0.0002 (4) | -0.0007 (2) | -0.0050 (4) |
| N1 | 0.013 (4) | 0.025 (3) | 0.018 (3) | 0.002 (2) | -0.001 (3) | -0.005 (3) |
| N2 | 0.025 (4) | 0.028 (4) | 0.008 (3) | 0.002 (3) | 0.002 (3) | 0.002 (3) |
| N3 | 0.033 (5) | 0.038 (4) | 0.022 (4) | -0.006 (3) | 0.006 (3) | -0.010 (3) |
| N4 | 0.025 (4) | 0.047 (5) | 0.017 (3) | -0.005 (3) | 0.009 (3) | -0.007 (3) |
| C1 | 0.024 (4) | 0.023 (4) | 0.009 (4) | -0.001 (3) | 0.003 (3) | 0.002 (3) |
| C2 | 0.020 (4) | 0.032 (4) | 0.011 (4) | 0.007 (3) | 0.001 (3) | -0.003 (3) |
| C3 | 0.015 (4) | 0.029 (4) | 0.014 (4) | 0.006 (3) | 0.004 (3) | 0.001 (3) |
| C4 | 0.022 (4) | 0.026 (4) | 0.016 (4) | 0.002 (3) | 0.003 (3) | 0.004 (3) |
| C5 | 0.017 (4) | 0.027 (4) | 0.008 (3) | 0.001 (3) | 0.002 (3) | 0.001 (3) |
| C6 | 0.023 (4) | 0.029 (4) | 0.007 (4) | 0.006 (3) | 0.003 (3) | 0.000 (3) |
| C7 | 0.026 (5) | 0.013 (4) | 0.017 (5) | 0.006 (3) | 0.009 (4) | 0.001 (3) |
| C8 | 0.027 (5) | 0.018 (4) | 0.022 (5) | -0.003 (3) | 0.009 (4) | 0.001 (3) |
| C9 | 0.025 (5) | 0.032 (5) | 0.020 (5) | -0.003 (3) | 0.005 (4) | -0.006 (3) |
| C10 | 0.015 (3) | 0.048 (4) | 0.016 (3) | -0.004 (3) | 0.007 (2) | 0.000 (3) |
| C11 | 0.015 (3) | 0.048 (4) | 0.016 (3) | -0.004 (3) | 0.007 (2) | 0.000 (3) |

Geometric parameters (Å, °)

| | | | |
|--------------|------------|---------------|------------|
| S1—C9 | 1.737 (11) | C2—H2A | 0.9300 |
| S1—C8 | 1.813 (10) | C3—C4 | 1.413 (11) |
| Br1—C3 | 1.892 (8) | C4—C5 | 1.384 (11) |
| N1—C7 | 1.298 (13) | C4—H4A | 0.9300 |
| N1—N2 | 1.408 (11) | C5—C6 | 1.395 (13) |
| N2—C9 | 1.342 (14) | C5—H5A | 0.9300 |
| N2—C10 | 1.399 (12) | C6—C7 | 1.454 (12) |
| N3—C9 | 1.307 (13) | C7—C8 | 1.519 (13) |
| N3—N4 | 1.417 (11) | C8—H8A | 0.9700 |
| N4—C10 | 1.311 (12) | C8—H8B | 0.9700 |
| C1—C2 | 1.391 (11) | C10—C11 | 1.455 (14) |
| C1—C6 | 1.417 (11) | C11—H11A | 0.9600 |
| C1—H1A | 0.9300 | C11—H11B | 0.9600 |
| C2—C3 | 1.370 (12) | C11—H11C | 0.9600 |
| | | | |
| C9—S1—C8 | 94.0 (4) | C5—C6—C7 | 120.8 (7) |
| C7—N1—N2 | 115.1 (6) | C1—C6—C7 | 121.7 (8) |
| C9—N2—C10 | 107.4 (8) | N1—C7—C6 | 116.3 (8) |
| C9—N2—N1 | 130.2 (8) | N1—C7—C8 | 122.9 (8) |
| C10—N2—N1 | 121.4 (8) | C6—C7—C8 | 120.7 (8) |
| C9—N3—N4 | 106.7 (7) | C7—C8—S1 | 113.8 (7) |
| C10—N4—N3 | 108.5 (7) | C7—C8—H8A | 108.8 |
| C2—C1—C6 | 121.0 (8) | S1—C8—H8A | 108.8 |
| C2—C1—H1A | 119.5 | C7—C8—H8B | 108.8 |
| C6—C1—H1A | 119.5 | S1—C8—H8B | 108.8 |
| C3—C2—C1 | 120.1 (8) | H8A—C8—H8B | 107.7 |
| C3—C2—H2A | 120.0 | N3—C9—N2 | 110.2 (9) |
| C1—C2—H2A | 120.0 | N3—C9—S1 | 129.0 (8) |
| C2—C3—C4 | 120.5 (7) | N2—C9—S1 | 120.7 (7) |
| C2—C3—Br1 | 121.8 (6) | N4—C10—N2 | 107.1 (9) |
| C4—C3—Br1 | 117.7 (6) | N4—C10—C11 | 128.2 (9) |
| C5—C4—C3 | 118.7 (7) | N2—C10—C11 | 124.6 (8) |
| C5—C4—H4A | 120.6 | C10—C11—H11A | 109.5 |
| C3—C4—H4A | 120.6 | C10—C11—H11B | 109.5 |
| C4—C5—C6 | 122.2 (7) | H11A—C11—H11B | 109.5 |
| C4—C5—H5A | 118.9 | C10—C11—H11C | 109.5 |
| C6—C5—H5A | 118.9 | H11A—C11—H11C | 109.5 |
| C5—C6—C1 | 117.4 (8) | H11B—C11—H11C | 109.5 |
| | | | |
| C7—N1—N2—C9 | −26.3 (14) | C1—C6—C7—C8 | −8.3 (13) |
| C7—N1—N2—C10 | 166.6 (8) | N1—C7—C8—S1 | 43.3 (11) |
| C9—N3—N4—C10 | 1.6 (11) | C6—C7—C8—S1 | −140.3 (7) |
| C6—C1—C2—C3 | 0.9 (12) | C9—S1—C8—C7 | −48.8 (7) |
| C1—C2—C3—C4 | −3.7 (12) | N4—N3—C9—N2 | 0.5 (11) |
| C1—C2—C3—Br1 | 178.6 (6) | N4—N3—C9—S1 | −177.5 (7) |
| C2—C3—C4—C5 | 4.8 (12) | C10—N2—C9—N3 | −2.2 (12) |

| | | | |
|--------------|------------|---------------|-------------|
| Br1—C3—C4—C5 | -177.3 (6) | N1—N2—C9—N3 | -170.6 (9) |
| C3—C4—C5—C6 | -3.3 (12) | C10—N2—C9—S1 | 176.0 (7) |
| C4—C5—C6—C1 | 0.6 (13) | N1—N2—C9—S1 | 7.5 (14) |
| C4—C5—C6—C7 | 177.0 (7) | C8—S1—C9—N3 | -154.5 (10) |
| C2—C1—C6—C5 | 0.7 (13) | C8—S1—C9—N2 | 27.7 (9) |
| C2—C1—C6—C7 | -175.7 (8) | N3—N4—C10—N2 | -2.8 (10) |
| N2—N1—C7—C6 | -179.6 (7) | N3—N4—C10—C11 | -179.4 (9) |
| N2—N1—C7—C8 | -3.0 (13) | C9—N2—C10—N4 | 3.1 (10) |
| C5—C6—C7—N1 | -7.9 (13) | N1—N2—C10—N4 | 172.8 (8) |
| C1—C6—C7—N1 | 168.4 (9) | C9—N2—C10—C11 | 179.8 (9) |
| C5—C6—C7—C8 | 175.5 (9) | N1—N2—C10—C11 | -10.5 (13) |

Hydrogen-bond geometry (Å, °)

| <i>D</i> —H... <i>A</i> | <i>D</i> —H | H... <i>A</i> | <i>D</i> ... <i>A</i> | <i>D</i> —H... <i>A</i> |
|------------------------------------|-------------|---------------|-----------------------|-------------------------|
| C8—H8 <i>A</i> ...N3 ⁱ | 0.97 | 2.56 | 3.185 (12) | 122 |
| C8—H8 <i>B</i> ...N3 ⁱⁱ | 0.97 | 2.31 | 3.191 (12) | 151 |

Symmetry codes: (i) *x*, -*y*, *z*+1/2; (ii) *x*+1, -*y*, *z*+1/2.