

Acta Crystallographica Section E

## Structure Reports

Online

ISSN 1600-5368

## N-Methylpyrrolidine-1-carbothioamide

M. Naveed Umar,<sup>a</sup> M. Nawaz Tahir,<sup>b\*</sup> Mohammad Shoaib,<sup>c</sup> Akbar Ali<sup>a</sup> and Imran Khan<sup>d</sup>

<sup>a</sup>Department of Chemistry, University of Malakand, Pakistan, <sup>b</sup>University of Sargodha, Department of Physics, Sargodha, Pakistan, <sup>c</sup>Department of Pharmacy, University of Malakand, Pakistan, and <sup>d</sup>Department of Biotechnology, University of Malakand, Pakistan

Correspondence e-mail: dmntahir\_uos@yahoo.com

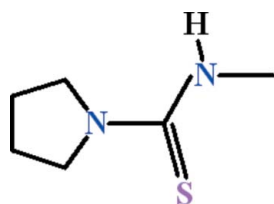
Received 5 May 2012; accepted 8 May 2012

Key indicators: single-crystal X-ray study;  $T = 296$  K; mean  $\sigma(\text{C}-\text{C}) = 0.011$  Å;  $R$  factor = 0.079;  $wR$  factor = 0.262; data-to-parameter ratio = 16.4.

There are two independent molecules in the asymmetric unit of the title compound,  $\text{C}_6\text{H}_{12}\text{N}_2\text{S}$ , in which the *N*-methylthioformamide unit and the pyrrolidine ring mean plane are oriented at dihedral angles of 5.9 (5) and 5.9 (4)°. In the crystal, zigzag  $C(4)$  chains extending along the *a* axis are formed due to  $\text{N}-\text{H}\cdots\text{S}$  hydrogen bonds between alternate arrangements of molecules. The chains are interlinked by  $\text{C}-\text{H}\cdots\text{S}$  hydrogen bonds.

## Related literature

For a related structure, see: Jiang (2009). For graph-set notation, see: Bernstein *et al.* (1995).



## Experimental

## Crystal data

$\text{C}_6\text{H}_{12}\text{N}_2\text{S}$   
 $M_r = 144.25$   
 Triclinic,  $P\bar{1}$   
 $a = 8.616$  (2) Å  
 $b = 9.077$  (2) Å  
 $c = 10.796$  (3) Å  
 $\alpha = 73.725$  (14)°  
 $\beta = 86.656$  (15)°

$\gamma = 76.177$  (16)°  
 $V = 787.0$  (3) Å<sup>3</sup>  
 $Z = 4$   
 Mo  $K\alpha$  radiation  
 $\mu = 0.33$  mm<sup>-1</sup>  
 $T = 296$  K  
 $0.30 \times 0.25 \times 0.20$  mm

## Data collection

Bruker Kappa APEXII CCD diffractometer  
 Absorption correction: multi-scan (SADABS; Bruker, 2005)  
 $T_{\min} = 0.957$ ,  $T_{\max} = 0.966$

9119 measured reflections  
 2699 independent reflections  
 1385 reflections with  $I > 2\sigma(I)$   
 $R_{\text{int}} = 0.067$

## Refinement

$R[F^2 > 2\sigma(F^2)] = 0.079$   
 $wR(F^2) = 0.262$   
 $S = 1.04$   
 2699 reflections

165 parameters  
 H-atom parameters constrained  
 $\Delta\rho_{\text{max}} = 0.43$  e Å<sup>-3</sup>  
 $\Delta\rho_{\text{min}} = -0.33$  e Å<sup>-3</sup>

Table 1

Hydrogen-bond geometry (Å, °).

| $D-\text{H}\cdots A$                          | $D-\text{H}$ | $\text{H}\cdots A$ | $D\cdots A$ | $D-\text{H}\cdots A$ |
|---|--------------|--------------------|-------------|----------------------|
| $\text{N1}-\text{H1}\cdots\text{S2}^i$        | 0.86         | 2.73               | 3.472 (5)   | 145                  |
| $\text{N3}-\text{H4}\cdots\text{S1}^{ii}$     | 0.86         | 2.64               | 3.410 (5)   | 150                  |
| $\text{C12}-\text{H12B}\cdots\text{S1}^{iii}$ | 0.97         | 2.84               | 3.765 (5)   | 159                  |

Symmetry codes: (i)  $-x + 1, -y + 1, -z + 1$ ; (ii)  $-x, -y + 1, -z + 1$ ; (iii)  $x, y, z + 1$ .

Data collection: APEX2 (Bruker, 2007); cell refinement: SAINT (Bruker, 2007); data reduction: SAINT; program(s) used to solve structure: SHELXS97 (Sheldrick, 2008); program(s) used to refine structure: SHELXL97 (Sheldrick, 2008); molecular graphics: ORTEP-3 for Windows (Farrugia, 1997) and PLATON (Spek, 2009); software used to prepare material for publication: WinGX (Farrugia, 1999) and PLATON.

The authors acknowledge the provision of funds for the purchase of a diffractometer and encouragement by Dr Muhammad Akram Chaudhary, Vice Chancellor, University of Sargodha, Pakistan. MNU, MS, AA and IK also gratefully acknowledge the financial support provided by the Higher Education Commission (HEC), Islamabad, Pakistan.

Supplementary data and figures for this paper are available from the IUCr electronic archives (Reference: BQ2355).

## References

- Bernstein, J., Davis, R. E., Shimon, L. & Chang, N.-L. (1995). *Angew. Chem. Int. Ed. Engl.* **34**, 1555-1573.  
 Bruker (2005). *SADABS*. Bruker AXS Inc., Madison, Wisconsin, USA.  
 Bruker (2007). *APEX2* and *SAINTE*. Bruker AXS Inc., Madison, Wisconsin, USA.  
 Farrugia, L. J. (1997). *J. Appl. Cryst.* **30**, 565.  
 Farrugia, L. J. (1999). *J. Appl. Cryst.* **32**, 837-838.  
 Jiang, J.-H. (2009). *Acta Cryst.* **E65**, o52.  
 Sheldrick, G. M. (2008). *Acta Cryst.* **A64**, 112-122.  
 Spek, A. L. (2009). *Acta Cryst.* **D65**, 148-155.

## supporting information

*Acta Cryst.* (2012). E68, o1706 [doi:10.1107/S1600536812020971]

## ***N*-Methylpyrrolidine-1-carbothioamide**

**M. Naveed Umar, M. Nawaz Tahir, Mohammad Shoaib, Akbar Ali and Imran Khan**

### **S1. Comment**

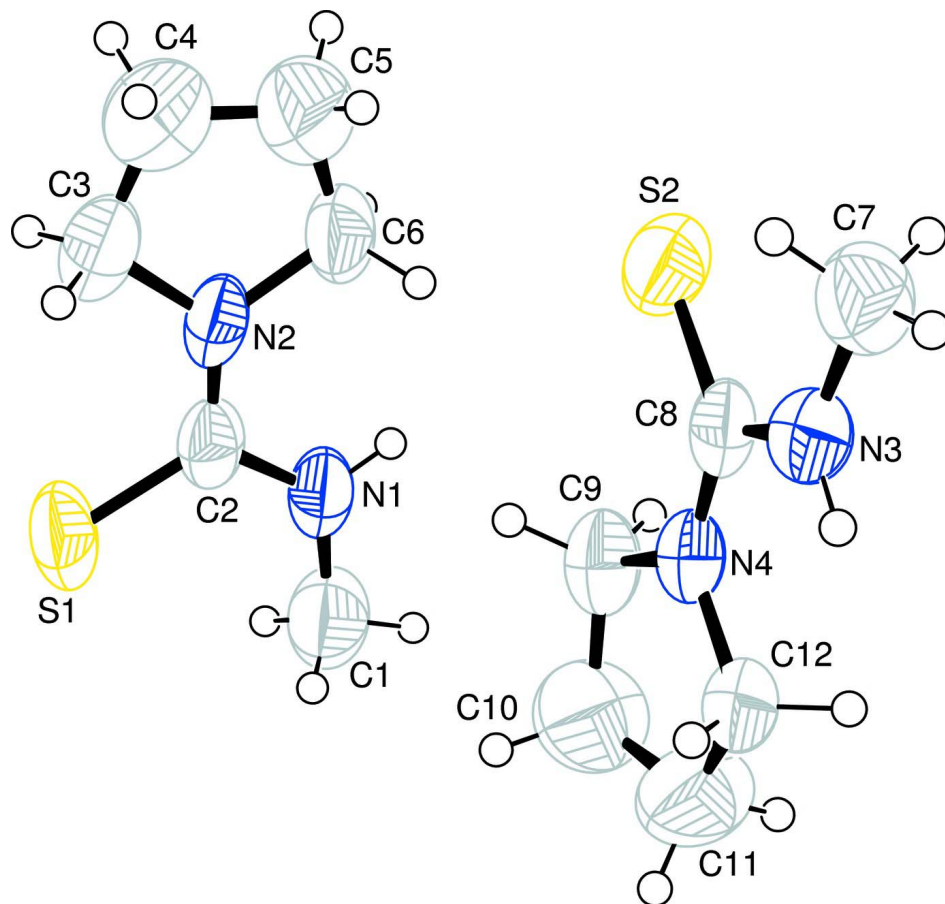
The title compound (I), (Fig. 1) has been synthesized as a derivative. The crystal structure of *N*-phenylpyrrolidine-1-carbothioamide related to this structure (I) has been published previously (Jiang, 2009). In (I), two molecules in the asymmetric unit are present, which differ slightly from each other geometrically. In one molecule, the *N*-methylthioformamide moiety A (C1/N1/C2/S1) and the pyrrolidine ring B (N2/C3–C6) are planar with r.m.s. deviation of 0.0010 Å and 0.0360 Å, respectively. The dihedral angle between A/B is 5.88 (46)°. In second molecule, the similar groups C (C7/N3/C8/S2) and D (N4/C9–C12) are also planar with r.m.s. deviation of 0.0032 Å and 0.0839 Å, respectively and the dihedral angle between C/D is 5.92 (39)°. Both molecules are interlinked through classical intramolecular H-bonding of N—H⋯S type (Table 1, Fig. 2) with *C*(4) chains (Bernstein *et al.*, 1995) to form zigzag infinite one-dimensional polymeric chains extending along the *a*-axis. The polymeric chains are interlinked due to C—H⋯S type of H-bonding (Table 1, Fig. 2).

### **S2. Experimental**

A solution of pyrrolidine (0.36 g, 5.00 mmol) in CH<sub>3</sub>CN (3 ml) was added dropwise to a stirred solution of methyl isothiocyanate (0.47 ml, 5.50 mmol) in CH<sub>3</sub>CN (10 ml, anhydrous) under cooling in an ice-bath to keep the reaction temperature below 283 K. The ice-bath was removed and stirring was continued at room temperature for 2 h to furnish a yellow-colored solution. The reaction mixture was extracted with ethylacetate and subjected to column chromatography to get the colorless product in 67% yield and then recrystallized with methanol to get colorless prisms of (I).

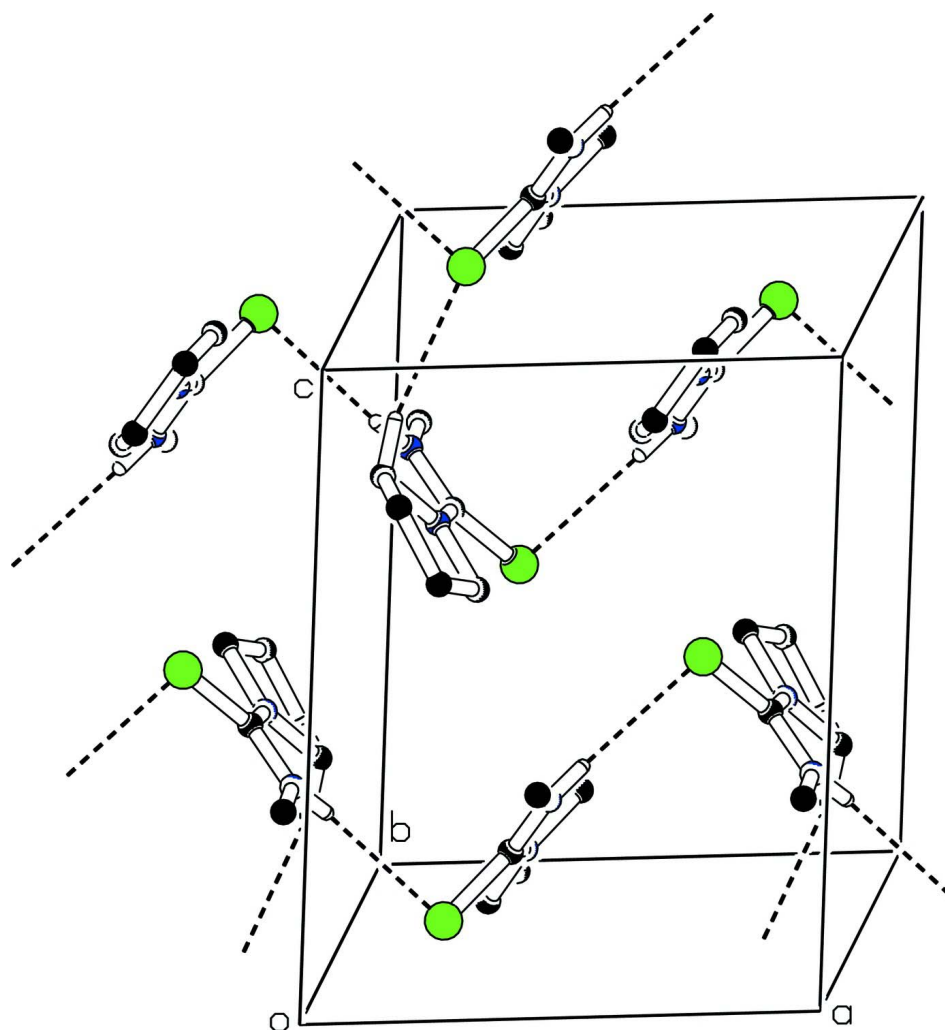
### **S3. Refinement**

The H-atoms were positioned geometrically (C—H = 0.96–0.97 Å, N—H = 0.86 Å) and refined as riding with  $U_{\text{iso}}(\text{H}) = xU_{\text{eq}}(\text{C}, \text{N})$ , where  $x = 1.5$  for methyl and  $x = 1.2$  for all other H-atoms.



**Figure 1**

View of the title compound with the atom numbering scheme. The thermal ellipsoids are drawn at the 50% probability level.



**Figure 2**

The partial packing (*PLATON*; Spek, 2009) which shows that molecules are interlinked to form polymeric chains along the *a*-axis. The H-atoms not involved in H-bonding are omitted for clarity.

### ***N*-Methylpyrrolidine-1-carbothioamide**

#### *Crystal data*

$C_6H_{12}N_2S$

$M_r = 144.25$

Triclinic,  $P\bar{1}$

Hall symbol:  $-P\ 1$

$a = 8.616\ (2)\ \text{\AA}$

$b = 9.077\ (2)\ \text{\AA}$

$c = 10.796\ (3)\ \text{\AA}$

$\alpha = 73.725\ (14)^\circ$

$\beta = 86.656\ (15)^\circ$

$\gamma = 76.177\ (16)^\circ$

$V = 787.0\ (3)\ \text{\AA}^3$

$Z = 4$

$F(000) = 312$

$D_x = 1.217\ \text{Mg m}^{-3}$

Mo  $K\alpha$  radiation,  $\lambda = 0.71073\ \text{\AA}$

Cell parameters from 1204 reflections

$\theta = 2.4\text{--}26.0^\circ$

$\mu = 0.33\ \text{mm}^{-1}$

$T = 296\ \text{K}$

Prism, colorless

$0.30 \times 0.25 \times 0.20\ \text{mm}$

*Data collection*

Bruker Kappa APEXII CCD  
diffractometer  
Radiation source: fine-focus sealed tube  
Graphite monochromator  
Detector resolution: 8.10 pixels mm<sup>-1</sup>  
 $\omega$  scans  
Absorption correction: multi-scan  
(*SADABS*; Bruker, 2005)  
 $T_{\min} = 0.957$ ,  $T_{\max} = 0.966$

9119 measured reflections  
2699 independent reflections  
1385 reflections with  $I > 3\sigma(I)$   
 $R_{\text{int}} = 0.067$   
 $\theta_{\max} = 25.0^\circ$ ,  $\theta_{\min} = 2.4^\circ$   
 $h = -10 \rightarrow 10$   
 $k = -11 \rightarrow 11$   
 $l = -13 \rightarrow 13$

*Refinement*

Refinement on  $F^2$   
Least-squares matrix: full  
 $R[F^2 > 2\sigma(F^2)] = 0.079$   
 $wR(F^2) = 0.262$   
 $S = 1.04$   
2699 reflections  
165 parameters  
0 restraints  
Primary atom site location: structure-invariant  
direct methods

Secondary atom site location: difference Fourier  
map  
Hydrogen site location: inferred from  
neighbouring sites  
H-atom parameters constrained  
 $w = 1/[\sigma^2(F_o^2) + (0.1268P)^2 + 0.3916P]$   
where  $P = (F_o^2 + 2F_c^2)/3$   
 $(\Delta/\sigma)_{\max} < 0.001$   
 $\Delta\rho_{\max} = 0.43 \text{ e } \text{\AA}^{-3}$   
 $\Delta\rho_{\min} = -0.33 \text{ e } \text{\AA}^{-3}$

*Special details*

**Geometry.** All esds (except the esd in the dihedral angle between two l.s. planes) are estimated using the full covariance matrix. The cell esds are taken into account individually in the estimation of esds in distances, angles and torsion angles; correlations between esds in cell parameters are only used when they are defined by crystal symmetry. An approximate (isotropic) treatment of cell esds is used for estimating esds involving l.s. planes.

**Refinement.** Refinement of  $F^2$  against ALL reflections. The weighted  $R$ -factor  $wR$  and goodness of fit  $S$  are based on  $F^2$ , conventional  $R$ -factors  $R$  are based on  $F$ , with  $F$  set to zero for negative  $F^2$ . The threshold expression of  $F^2 > \sigma(F^2)$  is used only for calculating  $R$ -factors(gt) *etc.* and is not relevant to the choice of reflections for refinement.  $R$ -factors based on  $F^2$  are statistically about twice as large as those based on  $F$ , and  $R$ -factors based on ALL data will be even larger.

*Fractional atomic coordinates and isotropic or equivalent isotropic displacement parameters ( $\text{\AA}^2$ )*

|     | <i>x</i>    | <i>y</i>    | <i>z</i>   | $U_{\text{iso}}^*/U_{\text{eq}}$ |
|-----|-------------|-------------|------------|----------------------------------|
| C1  | 0.4239 (8)  | 0.1340 (7)  | 0.3083 (6) | 0.101 (2)                        |
| H1A | 0.3186      | 0.1209      | 0.3350     | 0.151*                           |
| H1B | 0.4965      | 0.0862      | 0.3803     | 0.151*                           |
| H1C | 0.4586      | 0.0844      | 0.2406     | 0.151*                           |
| C2  | 0.3360 (6)  | 0.3972 (7)  | 0.1594 (5) | 0.0699 (14)                      |
| C3  | 0.2574 (7)  | 0.6685 (8)  | 0.0191 (5) | 0.0913 (18)                      |
| H3A | 0.2961      | 0.6484      | -0.0622    | 0.110*                           |
| H3B | 0.1437      | 0.6732      | 0.0248     | 0.110*                           |
| C4  | 0.2906 (12) | 0.8143 (10) | 0.0304 (9) | 0.153 (3)                        |
| H4A | 0.3452      | 0.8611      | -0.0463    | 0.184*                           |
| H4B | 0.1906      | 0.8885      | 0.0365     | 0.184*                           |
| C5  | 0.3868 (11) | 0.7860 (8)  | 0.1411 (7) | 0.123 (3)                        |
| H5A | 0.3265      | 0.8361      | 0.2030     | 0.148*                           |
| H5B | 0.4801      | 0.8297      | 0.1166     | 0.148*                           |
| C6  | 0.4365 (7)  | 0.6143 (7)  | 0.1987 (5) | 0.0846 (17)                      |
| H6A | 0.4123      | 0.5869      | 0.2900     | 0.101*                           |

|      |              |              |              |             |
|------|--------------|--------------|--------------|-------------|
| H6B  | 0.5503       | 0.5764       | 0.1880       | 0.101*      |
| C7   | 0.0612 (8)   | 0.8849 (7)   | 0.7020 (6)   | 0.0905 (18) |
| H7A  | 0.1661       | 0.8968       | 0.7156       | 0.136*      |
| H7B  | -0.0082      | 0.9109       | 0.7695       | 0.136*      |
| H7C  | 0.0199       | 0.9542       | 0.6202       | 0.136*      |
| C8   | 0.1664 (6)   | 0.6492 (6)   | 0.6253 (4)   | 0.0668 (14) |
| C9   | 0.2534 (7)   | 0.4014 (7)   | 0.5615 (5)   | 0.0791 (15) |
| H9A  | 0.3672       | 0.3846       | 0.5754       | 0.095*      |
| H9B  | 0.2292       | 0.4497       | 0.4704       | 0.095*      |
| C10  | 0.2012 (10)  | 0.2515 (9)   | 0.6076 (8)   | 0.126 (3)   |
| H10A | 0.1297       | 0.2437       | 0.5447       | 0.151*      |
| H10B | 0.2930       | 0.1627       | 0.6193       | 0.151*      |
| C11  | 0.1210 (11)  | 0.2487 (8)   | 0.7269 (7)   | 0.125 (3)   |
| H11A | 0.1933       | 0.1864       | 0.7980       | 0.150*      |
| H11B | 0.0307       | 0.2009       | 0.7314       | 0.150*      |
| C12  | 0.0651 (7)   | 0.4120 (6)   | 0.7365 (5)   | 0.0768 (15) |
| H12A | -0.0481      | 0.4515       | 0.7165       | 0.092*      |
| H12B | 0.0846       | 0.4183       | 0.8222       | 0.092*      |
| N1   | 0.4210 (5)   | 0.2971 (5)   | 0.2626 (4)   | 0.0771 (13) |
| H1   | 0.4775       | 0.3348       | 0.3037       | 0.093*      |
| N2   | 0.3437 (5)   | 0.5463 (6)   | 0.1280 (4)   | 0.0739 (12) |
| N3   | 0.0697 (5)   | 0.7250 (5)   | 0.7032 (4)   | 0.0746 (12) |
| H4   | 0.0100       | 0.6740       | 0.7564       | 0.089*      |
| N4   | 0.1603 (5)   | 0.5002 (5)   | 0.6404 (4)   | 0.0677 (11) |
| S1   | 0.22218 (19) | 0.3304 (2)   | 0.07310 (14) | 0.0932 (6)  |
| S2   | 0.28575 (19) | 0.74016 (18) | 0.51593 (13) | 0.0881 (6)  |

*Atomic displacement parameters (Å<sup>2</sup>)*

|     | $U^{11}$    | $U^{22}$    | $U^{33}$   | $U^{12}$     | $U^{13}$    | $U^{23}$    |
|-----|-------------|-------------|------------|--------------|-------------|-------------|
| C1  | 0.122 (5)   | 0.099 (5)   | 0.083 (4)  | -0.026 (4)   | -0.013 (4)  | -0.024 (4)  |
| C2  | 0.071 (3)   | 0.102 (4)   | 0.040 (3)  | -0.018 (3)   | 0.003 (2)   | -0.027 (3)  |
| C3  | 0.087 (4)   | 0.116 (5)   | 0.060 (3)  | -0.020 (4)   | -0.009 (3)  | -0.007 (3)  |
| C4  | 0.202 (10)  | 0.116 (6)   | 0.127 (7)  | -0.046 (6)   | -0.058 (7)  | 0.007 (5)   |
| C5  | 0.180 (8)   | 0.100 (5)   | 0.095 (5)  | -0.040 (5)   | -0.017 (5)  | -0.025 (4)  |
| C6  | 0.102 (4)   | 0.107 (5)   | 0.052 (3)  | -0.030 (4)   | -0.004 (3)  | -0.027 (3)  |
| C7  | 0.115 (5)   | 0.085 (4)   | 0.078 (4)  | -0.024 (3)   | 0.000 (3)   | -0.032 (3)  |
| C8  | 0.071 (3)   | 0.088 (4)   | 0.042 (3)  | -0.018 (3)   | -0.014 (2)  | -0.016 (3)  |
| C9  | 0.081 (4)   | 0.100 (4)   | 0.061 (3)  | -0.013 (3)   | -0.001 (3)  | -0.035 (3)  |
| C10 | 0.154 (7)   | 0.104 (5)   | 0.136 (7)  | -0.036 (5)   | 0.023 (6)   | -0.061 (5)  |
| C11 | 0.187 (8)   | 0.088 (5)   | 0.109 (6)  | -0.044 (5)   | 0.038 (5)   | -0.036 (4)  |
| C12 | 0.093 (4)   | 0.096 (4)   | 0.050 (3)  | -0.038 (3)   | 0.000 (3)   | -0.021 (3)  |
| N1  | 0.088 (3)   | 0.093 (3)   | 0.054 (3)  | -0.023 (3)   | -0.011 (2)  | -0.022 (2)  |
| N2  | 0.081 (3)   | 0.098 (3)   | 0.041 (2)  | -0.020 (3)   | -0.009 (2)  | -0.017 (2)  |
| N3  | 0.090 (3)   | 0.086 (3)   | 0.055 (3)  | -0.031 (2)   | 0.008 (2)   | -0.023 (2)  |
| N4  | 0.083 (3)   | 0.080 (3)   | 0.045 (2)  | -0.021 (2)   | -0.001 (2)  | -0.023 (2)  |
| S1  | 0.0962 (12) | 0.1408 (15) | 0.0594 (9) | -0.0374 (10) | -0.0056 (8) | -0.0447 (9) |
| S2  | 0.0935 (12) | 0.1108 (13) | 0.0601 (9) | -0.0357 (9)  | 0.0018 (8)  | -0.0135 (8) |

*Geometric parameters (Å, °)*

|            |            |               |            |
|------------|------------|---------------|------------|
| C1—N1      | 1.418 (7)  | C7—H7A        | 0.9600     |
| C1—H1A     | 0.9600     | C7—H7B        | 0.9600     |
| C1—H1B     | 0.9600     | C7—H7C        | 0.9600     |
| C1—H1C     | 0.9600     | C8—N4         | 1.330 (6)  |
| C2—N2      | 1.316 (6)  | C8—N3         | 1.358 (6)  |
| C2—N1      | 1.346 (6)  | C8—S2         | 1.688 (5)  |
| C2—S1      | 1.705 (5)  | C9—N4         | 1.475 (6)  |
| C3—C4      | 1.457 (9)  | C9—C10        | 1.480 (9)  |
| C3—N2      | 1.464 (7)  | C9—H9A        | 0.9700     |
| C3—H3A     | 0.9700     | C9—H9B        | 0.9700     |
| C3—H3B     | 0.9700     | C10—C11       | 1.422 (10) |
| C4—C5      | 1.423 (10) | C10—H10A      | 0.9700     |
| C4—H4A     | 0.9700     | C10—H10B      | 0.9700     |
| C4—H4B     | 0.9700     | C11—C12       | 1.476 (8)  |
| C5—C6      | 1.473 (8)  | C11—H11A      | 0.9700     |
| C5—H5A     | 0.9700     | C11—H11B      | 0.9700     |
| C5—H5B     | 0.9700     | C12—N4        | 1.462 (6)  |
| C6—N2      | 1.474 (6)  | C12—H12A      | 0.9700     |
| C6—H6A     | 0.9700     | C12—H12B      | 0.9700     |
| C6—H6B     | 0.9700     | N1—H1         | 0.8600     |
| C7—N3      | 1.432 (6)  | N3—H4         | 0.8600     |
|            |            |               |            |
| N1—C1—H1A  | 109.5      | N4—C8—N3      | 115.8 (5)  |
| N1—C1—H1B  | 109.5      | N4—C8—S2      | 122.6 (4)  |
| H1A—C1—H1B | 109.5      | N3—C8—S2      | 121.6 (4)  |
| N1—C1—H1C  | 109.5      | N4—C9—C10     | 103.7 (5)  |
| H1A—C1—H1C | 109.5      | N4—C9—H9A     | 111.0      |
| H1B—C1—H1C | 109.5      | C10—C9—H9A    | 111.0      |
| N2—C2—N1   | 118.2 (4)  | N4—C9—H9B     | 111.0      |
| N2—C2—S1   | 121.6 (4)  | C10—C9—H9B    | 111.0      |
| N1—C2—S1   | 120.2 (4)  | H9A—C9—H9B    | 109.0      |
| C4—C3—N2   | 104.4 (5)  | C11—C10—C9    | 108.4 (6)  |
| C4—C3—H3A  | 110.9      | C11—C10—H10A  | 110.0      |
| N2—C3—H3A  | 110.9      | C9—C10—H10A   | 110.0      |
| C4—C3—H3B  | 110.9      | C11—C10—H10B  | 110.0      |
| N2—C3—H3B  | 110.9      | C9—C10—H10B   | 110.0      |
| H3A—C3—H3B | 108.9      | H10A—C10—H10B | 108.4      |
| C5—C4—C3   | 111.2 (6)  | C10—C11—C12   | 108.9 (6)  |
| C5—C4—H4A  | 109.4      | C10—C11—H11A  | 109.9      |
| C3—C4—H4A  | 109.4      | C12—C11—H11A  | 109.9      |
| C5—C4—H4B  | 109.4      | C10—C11—H11B  | 109.9      |
| C3—C4—H4B  | 109.4      | C12—C11—H11B  | 109.9      |
| H4A—C4—H4B | 108.0      | H11A—C11—H11B | 108.3      |
| C4—C5—C6   | 108.3 (6)  | N4—C12—C11    | 103.6 (5)  |
| C4—C5—H5A  | 110.0      | N4—C12—H12A   | 111.0      |
| C6—C5—H5A  | 110.0      | C11—C12—H12A  | 111.0      |

|                |            |               |            |
|----------------|------------|---------------|------------|
| C4—C5—H5B      | 110.0      | N4—C12—H12B   | 111.0      |
| C6—C5—H5B      | 110.0      | C11—C12—H12B  | 111.0      |
| H5A—C5—H5B     | 108.4      | H12A—C12—H12B | 109.0      |
| C5—C6—N2       | 104.9 (5)  | C2—N1—C1      | 124.6 (5)  |
| C5—C6—H6A      | 110.8      | C2—N1—H1      | 117.7      |
| N2—C6—H6A      | 110.8      | C1—N1—H1      | 117.7      |
| C5—C6—H6B      | 110.8      | C2—N2—C3      | 124.3 (5)  |
| N2—C6—H6B      | 110.8      | C2—N2—C6      | 125.1 (4)  |
| H6A—C6—H6B     | 108.8      | C3—N2—C6      | 110.6 (5)  |
| N3—C7—H7A      | 109.5      | C8—N3—C7      | 123.9 (5)  |
| N3—C7—H7B      | 109.5      | C8—N3—H4      | 118.0      |
| H7A—C7—H7B     | 109.5      | C7—N3—H4      | 118.0      |
| N3—C7—H7C      | 109.5      | C8—N4—C12     | 125.5 (4)  |
| H7A—C7—H7C     | 109.5      | C8—N4—C9      | 123.2 (4)  |
| H7B—C7—H7C     | 109.5      | C12—N4—C9     | 111.3 (4)  |
|                |            |               |            |
| N2—C3—C4—C5    | -1.7 (10)  | C4—C3—N2—C6   | -4.0 (7)   |
| C3—C4—C5—C6    | 6.6 (11)   | C5—C6—N2—C2   | -170.9 (6) |
| C4—C5—C6—N2    | -8.6 (8)   | C5—C6—N2—C3   | 7.8 (6)    |
| N4—C9—C10—C11  | -15.4 (8)  | N4—C8—N3—C7   | 179.3 (5)  |
| C9—C10—C11—C12 | 21.4 (10)  | S2—C8—N3—C7   | -1.0 (7)   |
| C10—C11—C12—N4 | -17.9 (8)  | N3—C8—N4—C12  | -3.0 (7)   |
| N2—C2—N1—C1    | 179.6 (5)  | S2—C8—N4—C12  | 177.3 (4)  |
| S1—C2—N1—C1    | -0.3 (7)   | N3—C8—N4—C9   | 178.1 (4)  |
| N1—C2—N2—C3    | -179.7 (5) | S2—C8—N4—C9   | -1.6 (6)   |
| S1—C2—N2—C3    | 0.3 (7)    | C11—C12—N4—C8 | -170.9 (5) |
| N1—C2—N2—C6    | -1.1 (8)   | C11—C12—N4—C9 | 8.1 (6)    |
| S1—C2—N2—C6    | 178.8 (4)  | C10—C9—N4—C8  | -176.9 (5) |
| C4—C3—N2—C2    | 174.7 (6)  | C10—C9—N4—C12 | 4.1 (6)    |

Hydrogen-bond geometry ( $\text{\AA}$ ,  $^\circ$ )

| $D-H\cdots A$                       | $D-H$ | $H\cdots A$ | $D\cdots A$ | $D-H\cdots A$ |
|-------------------------------------|-------|-------------|-------------|---------------|
| N1—H1 $\cdots$ S2 <sup>i</sup>      | 0.86  | 2.73        | 3.472 (5)   | 145           |
| N3—H4 $\cdots$ S1 <sup>ii</sup>     | 0.86  | 2.64        | 3.410 (5)   | 150           |
| C12—H12B $\cdots$ S1 <sup>iii</sup> | 0.97  | 2.84        | 3.765 (5)   | 159           |

Symmetry codes: (i)  $-x+1, -y+1, -z+1$ ; (ii)  $-x, -y+1, -z+1$ ; (iii)  $x, y, z+1$ .