

Acta Crystallographica Section E

Structure Reports

Online

ISSN 1600-5368

7-Diethylamino-2-propylsulfanyl-3-(1H-1,2,4-triazol-1-yl)-4H-thiochromen-4-one

Chen Li, Guang Yan Yu, Xin Tian, Song Li and Tao Xiao*

Department of Applied Chemistry, College of Science, Nanjing University of Technology, Nanjing 210009, People's Republic of China

Correspondence e-mail: taoxiao@njut.edu.cn

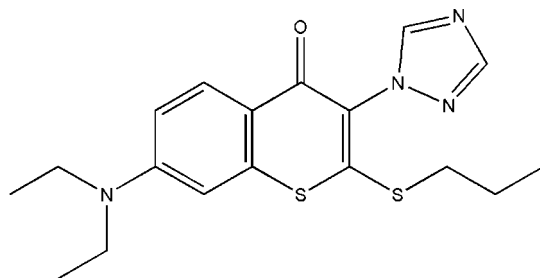
Received 10 April 2012; accepted 12 April 2012

 Key indicators: single-crystal X-ray study; $T = 293$ K; mean $\sigma(\text{C}-\text{C}) = 0.005$ Å; R factor = 0.062; wR factor = 0.181; data-to-parameter ratio = 15.7.

In the title compound, $\text{C}_{18}\text{H}_{22}\text{N}_4\text{OS}_2$, the six-membered rings are almost coplanar, showing a dihedral angle between the mean planes of $9.0(4)^\circ$, while the triazol ring is nearly perpendicular to the thiochromen-4-one unit, making an angle of $89.8(4)^\circ$. In the crystal, $\text{C}-\text{H}\cdots\text{N}$ hydrogen bonds link the molecules in a stacked arrangement along the c axis.

Related literature

For related compounds, see: Nohara *et al.* (1977); Xiao *et al.* (2010); Liu *et al.* (2011). For bond-length data, see: Allen *et al.* (1987).



Experimental

Crystal data

 $\text{C}_{18}\text{H}_{22}\text{N}_4\text{OS}_2$
 $M_r = 374.52$

 Monoclinic, $C2/c$
 $a = 21.937(4)$ Å

 $b = 9.817(2)$ Å

 $c = 19.059(4)$ Å

 $\beta = 109.85(3)^\circ$
 $V = 3860.6(15)$ Å³
 $Z = 8$
 Mo $K\alpha$ radiation

 $\mu = 0.29$ mm⁻¹
 $T = 293$ K
 $0.30 \times 0.20 \times 0.20$ mm

Data collection

 Enraf–Nonius CAD-4 diffractometer
 Absorption correction: ψ scan (North *et al.*, 1968)
 $T_{\min} = 0.918$, $T_{\max} = 0.944$
 3644 measured reflections

 3549 independent reflections
 2309 reflections with $I > 2\sigma(I)$
 $R_{\text{int}} = 0.062$
 3 standard reflections every 200 reflections
 intensity decay: 1%

Refinement

 $R[F^2 > 2\sigma(F^2)] = 0.062$
 $wR(F^2) = 0.181$
 $S = 1.00$
 3549 reflections
 226 parameters

 1 restraint
 H-atom parameters constrained
 $\Delta\rho_{\text{max}} = 0.46$ e Å⁻³
 $\Delta\rho_{\text{min}} = -0.29$ e Å⁻³
Table 1

Hydrogen-bond geometry (Å, °).

| $D-\text{H}\cdots A$ | $D-\text{H}$ | $\text{H}\cdots A$ | $D\cdots A$ | $D-\text{H}\cdots A$ |
|---|--------------|--------------------|-------------|----------------------|
| $\text{C}1-\text{H}1A\cdots\text{N}4^i$ | 0.93 | 2.57 | 3.451 (5) | 159 |

 Symmetry code: (i) $x, -y + 2, z + \frac{1}{2}$.

Data collection: *CAD-4 Software* (Enraf–Nonius, 1985); cell refinement: *CAD-4 Software*; data reduction: *XCAD4* (Harms & Wocadlo, 1995); program(s) used to solve structure: *SHELXS97* (Sheldrick, 2008); program(s) used to refine structure: *SHELXL97* (Sheldrick, 2008); molecular graphics: *PLATON* (Spek, 2009); software used to prepare material for publication: *SHELXTL* (Sheldrick, 2008).

The authors thank the Center of Testing and Analysis, Nanjing University, for support.

Supplementary data and figures for this paper are available from the IUCr electronic archives (Reference: ZQ2162).

References

- Allen, F. H., Kennard, O., Watson, D. G., Brammer, L., Orpen, A. G. & Taylor, R. (1987). *J. Chem. Soc. Perkin Trans. 2*, pp. S1–19.
- Enraf–Nonius (1985). *CAD-4 Software*. Enraf–Nonius, Delft, The Netherlands.
- Harms, K. & Wocadlo, S. (1995). *XCAD4*. University of Marburg, Germany.
- Liu, D., Xiao, T., Li, Y., Yu, G. & Li, C. (2011). *Acta Cryst.* **E67**, o1777.
- Nohara, A., Kuriki, H., Saijo, T., Sugihara, H., Kanno, M. & Sanno, Y. (1977). *J. Med. Chem.* **20**, 141–145.
- North, A. C. T., Phillips, D. C. & Mathews, F. S. (1968). *Acta Cryst.* **A24**, 351–359.
- Sheldrick, G. M. (2008). *Acta Cryst.* **A64**, 112–122.
- Spek, A. L. (2009). *Acta Cryst.* **D65**, 148–155.
- Xiao, T., Li, Y., Liu, D. & Yu, G. (2010). *Acta Cryst.* **E66**, o2213.

supporting information

Acta Cryst. (2012). E68, o1435 [doi:10.1107/S1600536812015954]

7-Diethylamino-2-propylsulfanyl-3-(1*H*-1,2,4-triazol-1-yl)-4*H*-thiochromen-4-one

Chen Li, Guang Yan Yu, Xin Tian, Song Li and Tao Xiao

S1. Comment

The title compound is the key intermediate in the synthesis of a new kind of antiallergic drugs (Nohara *et al.*, 1977). The crystal structure determination has been carried out in order to elucidate its molecular conformation (Fig. 1).

The molecular structure of the title compound, C₁₈H₂₂O₁N₄S₂, exhibits bond lengths and angles within normal ranges (Allen *et al.*, 1987; Xiao *et al.*, 2010; Liu *et al.*, 2011). The six-membered rings A (C1—C6) and B (S1/C6—C9) are almost coplanar, showing a dihedral angle between the mean planes of 9.0 (4)°. The dihedral angle between the ring A (C1—C6) and C (N2/N3/N4/C17/C18) is 83.0 (4)° while the dihedral angle between the ring B (S1/C6—C9) and C (N2/N3/N4/C17—C18) is 89.8 (4)°.

In the crystal structure, intermolecular C—H···N hydrogen bonds (Table 2) link the molecules in a stacked arrangement along the *c* axis (Fig. 2).

S2. Experimental

Diethylamine (13.8 ml, 134.4 mmol) was added to a solution of 2-(allylthio)-7-fluoro-3-(1*H*-1,2,4-triazol-1-yl)-4*H*-thiochromen-4-one (5 g, 15.7 mmol) in DMSO (30 ml) containing NaOH (1.8 g, 45 mmol). The yellow solution was stirred for about 12 h at room temperature. After completion of the reaction, the solution was poured into water (50 ml). The crystalline product was isolated by filtration and washed with water (300 ml). The precipitate was recrystallized with acetone and a yellow deposit was obtained (m.p. 420 K). Crystals suitable for X-ray analysis were obtained by dissolving the crude product (1.0 g) in ethanol (30 ml) and then allowing the solution to evaporate slowly at room temperature for about 7 d.

S3. Refinement

The H atoms were positioned geometrically with C—H = 0.93 Å for aromatic H atoms, with C—H = 0.97 Å for methylene H atoms, and with C—H = 0.96 Å for methyl H atoms. They were constrained to ride on their parent atoms with $U_{\text{iso}}(\text{H}) = 1.2U_{\text{eq}}(\text{C})$, or $1.5U_{\text{eq}}(\text{C})$ for the methyl H atoms.

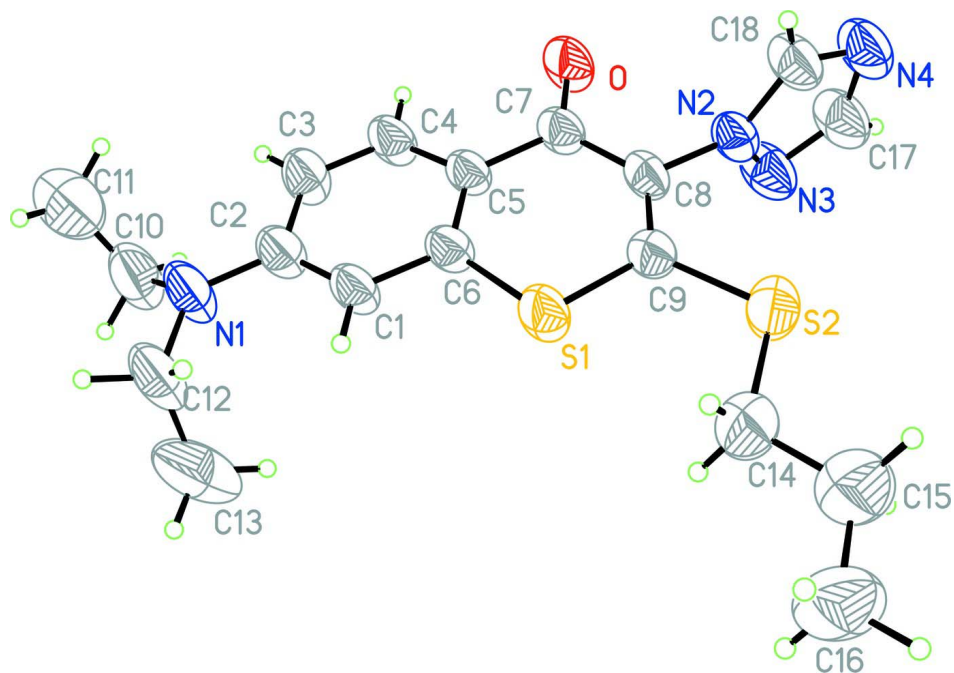
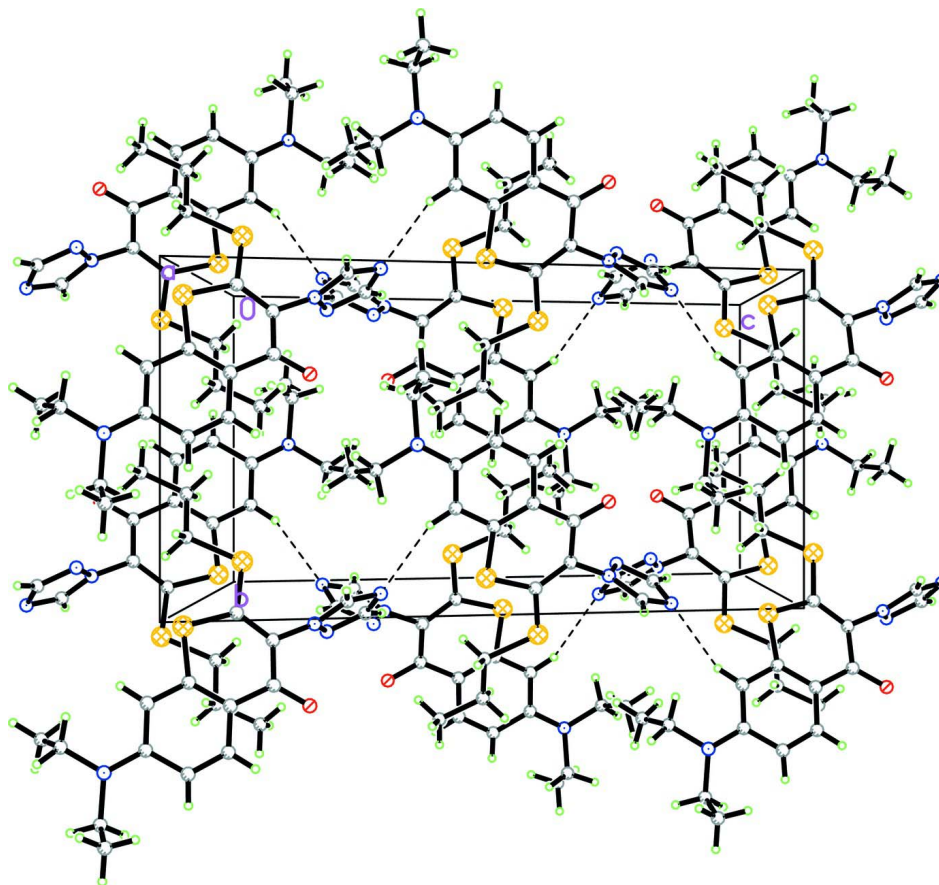


Figure 1

The molecular structure of the title compound. Displacement ellipsoids are drawn at the 50% probability level.

**Figure 2**

A packing diagram of the title compound. Hydrogen bonds are shown as dashed lines.

7-Diethylamino-2-propylsulfanyl-3-(1H-1,2,4-triazol-1-yl)-4H-thiochromen-4-one

Crystal data

$C_{18}H_{22}N_4OS_2$

$M_r = 374.52$

Monoclinic, $C2/c$

Hall symbol: $-C 2yc$

$a = 21.937(4) \text{ \AA}$

$b = 9.817(2) \text{ \AA}$

$c = 19.059(4) \text{ \AA}$

$\beta = 109.85(3)^\circ$

$V = 3860.6(15) \text{ \AA}^3$

$Z = 8$

$F(000) = 1584$

$D_x = 1.289 \text{ Mg m}^{-3}$

Melting point: 420 K

Mo $K\alpha$ radiation, $\lambda = 0.71073 \text{ \AA}$

Cell parameters from 25 reflections

$\theta = 9\text{--}13^\circ$

$\mu = 0.29 \text{ mm}^{-1}$

$T = 293 \text{ K}$

Block, yellow

$0.30 \times 0.20 \times 0.20 \text{ mm}$

Data collection

Enraf-Nonius CAD-4
diffractometer

Radiation source: fine-focus sealed tube

Graphite monochromator

$\omega/2\theta$ scans

Absorption correction: ψ scan
(North *et al.*, 1968)

$T_{\min} = 0.918$, $T_{\max} = 0.944$

3644 measured reflections

3549 independent reflections

2309 reflections with $I > 2\sigma(I)$

$R_{\text{int}} = 0.062$

$\theta_{\max} = 25.4^\circ$, $\theta_{\min} = 2.0^\circ$

$h = 0 \rightarrow 26$

$k = 0 \rightarrow 11$
 $l = -22 \rightarrow 21$

3 standard reflections every 200 reflections
 intensity decay: 1%

Refinement

Refinement on F^2
 Least-squares matrix: full
 $R[F^2 > 2\sigma(F^2)] = 0.062$
 $wR(F^2) = 0.181$
 $S = 1.00$
 3549 reflections
 226 parameters
 1 restraint
 Primary atom site location: structure-invariant
 direct methods

Secondary atom site location: difference Fourier
 map
 Hydrogen site location: inferred from
 neighbouring sites
 H-atom parameters constrained
 $w = 1/[\sigma^2(F_o^2) + (0.1P)^2 + 2.5P]$
 where $P = (F_o^2 + 2F_c^2)/3$
 $(\Delta/\sigma)_{\max} < 0.001$
 $\Delta\rho_{\max} = 0.46 \text{ e } \text{\AA}^{-3}$
 $\Delta\rho_{\min} = -0.29 \text{ e } \text{\AA}^{-3}$

Special details

Geometry. All e.s.d.'s (except the e.s.d. in the dihedral angle between two l.s. planes) are estimated using the full covariance matrix. The cell e.s.d.'s are taken into account individually in the estimation of e.s.d.'s in distances, angles and torsion angles; correlations between e.s.d.'s in cell parameters are only used when they are defined by crystal symmetry. An approximate (isotropic) treatment of cell e.s.d.'s is used for estimating e.s.d.'s involving l.s. planes.

Refinement. Refinement of F^2 against ALL reflections. The weighted R -factor wR and goodness of fit S are based on F^2 , conventional R -factors R are based on F , with F set to zero for negative F^2 . The threshold expression of $F^2 > \sigma(F^2)$ is used only for calculating R -factors(gt) *etc.* and is not relevant to the choice of reflections for refinement. R -factors based on F^2 are statistically about twice as large as those based on F , and R -factors based on ALL data will be even larger.

Fractional atomic coordinates and isotropic or equivalent isotropic displacement parameters (\AA^2)

| | x | y | z | $U_{\text{iso}}^*/U_{\text{eq}}$ |
|------|--------------|--------------|---------------|----------------------------------|
| O | 0.31273 (13) | 0.6959 (3) | -0.19491 (12) | 0.0685 (7) |
| S1 | 0.37800 (5) | 0.93494 (9) | 0.01442 (4) | 0.0623 (3) |
| C1 | 0.34042 (17) | 0.7137 (3) | 0.06581 (16) | 0.0521 (8) |
| H1A | 0.3504 | 0.7653 | 0.1092 | 0.063* |
| N1 | 0.31682 (18) | 0.5173 (3) | 0.12929 (16) | 0.0768 (10) |
| S2 | 0.42593 (6) | 1.12341 (11) | -0.07537 (6) | 0.0778 (4) |
| N2 | 0.37390 (13) | 0.9341 (3) | -0.19835 (14) | 0.0517 (7) |
| C2 | 0.31990 (18) | 0.5786 (4) | 0.06550 (18) | 0.0575 (9) |
| C3 | 0.3029 (2) | 0.5069 (4) | -0.00294 (19) | 0.0647 (10) |
| H3A | 0.2884 | 0.4175 | -0.0051 | 0.078* |
| N3 | 0.42763 (15) | 0.9017 (4) | -0.21445 (17) | 0.0755 (10) |
| C4 | 0.30731 (19) | 0.5662 (3) | -0.06570 (17) | 0.0591 (9) |
| H4A | 0.2953 | 0.5160 | -0.1097 | 0.071* |
| N4 | 0.35895 (17) | 1.0243 (4) | -0.30789 (17) | 0.0752 (10) |
| C5 | 0.32941 (15) | 0.7002 (3) | -0.06632 (15) | 0.0460 (7) |
| C6 | 0.34602 (15) | 0.7712 (3) | 0.00137 (16) | 0.0461 (7) |
| C7 | 0.33381 (16) | 0.7573 (3) | -0.13516 (16) | 0.0498 (8) |
| C8 | 0.36498 (16) | 0.8890 (3) | -0.13097 (16) | 0.0496 (8) |
| C9 | 0.38666 (17) | 0.9716 (3) | -0.07033 (17) | 0.0521 (8) |
| C10 | 0.3179 (3) | 0.3638 (5) | 0.1353 (3) | 0.0961 (15) |
| H10A | 0.3371 | 0.3251 | 0.1009 | 0.115* |
| H10B | 0.3439 | 0.3366 | 0.1855 | 0.115* |

| | | | | |
|------|--------------|------------|---------------|-------------|
| C11 | 0.2543 (3) | 0.3150 (7) | 0.1184 (3) | 0.122 (2) |
| H11A | 0.2550 | 0.2174 | 0.1222 | 0.184* |
| H11B | 0.2288 | 0.3414 | 0.0685 | 0.184* |
| H11C | 0.2356 | 0.3527 | 0.1529 | 0.184* |
| C12 | 0.3326 (2) | 0.5939 (5) | 0.1989 (2) | 0.0825 (13) |
| H12A | 0.3115 | 0.5512 | 0.2304 | 0.099* |
| H12B | 0.3154 | 0.6856 | 0.1878 | 0.099* |
| C13 | 0.4041 (3) | 0.6019 (6) | 0.2407 (3) | 0.126 (2) |
| H13A | 0.4117 | 0.6538 | 0.2856 | 0.189* |
| H13B | 0.4253 | 0.6454 | 0.2101 | 0.189* |
| H13C | 0.4212 | 0.5117 | 0.2533 | 0.189* |
| C14 | 0.4445 (2) | 1.1997 (4) | 0.0179 (2) | 0.0828 (13) |
| H14A | 0.4048 | 1.2114 | 0.0289 | 0.099* |
| H14B | 0.4727 | 1.1394 | 0.0552 | 0.099* |
| C15 | 0.4759 (3) | 1.3310 (5) | 0.0208 (3) | 0.1027 (16) |
| H15A | 0.4476 | 1.3907 | -0.0167 | 0.123* |
| H15B | 0.5155 | 1.3188 | 0.0095 | 0.123* |
| C16 | 0.4921 (3) | 1.3968 (5) | 0.0972 (3) | 0.1077 (17) |
| H16A | 0.5126 | 1.4832 | 0.0972 | 0.162* |
| H16B | 0.5209 | 1.3387 | 0.1343 | 0.162* |
| H16C | 0.4529 | 1.4102 | 0.1082 | 0.162* |
| C17 | 0.4160 (2) | 0.9580 (5) | -0.2799 (2) | 0.0791 (13) |
| H17A | 0.4453 | 0.9527 | -0.3056 | 0.095* |
| C18 | 0.33441 (19) | 1.0072 (4) | -0.25448 (18) | 0.0632 (10) |
| H18A | 0.2946 | 1.0417 | -0.2556 | 0.076* |

Atomic displacement parameters (\AA^2)

| | U^{11} | U^{22} | U^{33} | U^{12} | U^{13} | U^{23} |
|-----|-------------|-------------|-------------|--------------|-------------|--------------|
| O | 0.101 (2) | 0.0720 (17) | 0.0323 (11) | -0.0199 (14) | 0.0227 (12) | -0.0092 (11) |
| S1 | 0.0961 (7) | 0.0541 (5) | 0.0374 (4) | -0.0189 (5) | 0.0236 (4) | -0.0066 (4) |
| C1 | 0.075 (2) | 0.0510 (19) | 0.0301 (15) | -0.0042 (17) | 0.0170 (15) | -0.0023 (14) |
| N1 | 0.126 (3) | 0.0677 (18) | 0.0389 (15) | -0.019 (2) | 0.0313 (17) | 0.0017 (14) |
| S2 | 0.1058 (9) | 0.0682 (7) | 0.0592 (6) | -0.0306 (6) | 0.0277 (6) | -0.0010 (5) |
| N2 | 0.0590 (16) | 0.0614 (17) | 0.0362 (13) | -0.0001 (14) | 0.0179 (12) | 0.0061 (13) |
| C2 | 0.077 (2) | 0.055 (2) | 0.0401 (17) | -0.0026 (17) | 0.0192 (16) | 0.0015 (15) |
| C3 | 0.101 (3) | 0.0449 (19) | 0.0478 (19) | -0.0168 (19) | 0.0249 (19) | -0.0029 (16) |
| N3 | 0.065 (2) | 0.112 (3) | 0.0568 (19) | 0.0182 (19) | 0.0302 (16) | 0.0236 (18) |
| C4 | 0.089 (3) | 0.0506 (19) | 0.0336 (16) | -0.0120 (18) | 0.0158 (16) | -0.0052 (15) |
| N4 | 0.082 (2) | 0.096 (3) | 0.0488 (17) | 0.004 (2) | 0.0244 (17) | 0.0219 (17) |
| C5 | 0.0582 (19) | 0.0483 (18) | 0.0303 (14) | -0.0025 (15) | 0.0133 (13) | -0.0011 (13) |
| C6 | 0.0564 (19) | 0.0463 (17) | 0.0336 (14) | 0.0001 (14) | 0.0129 (13) | -0.0008 (13) |
| C7 | 0.063 (2) | 0.0542 (19) | 0.0323 (15) | -0.0034 (16) | 0.0159 (14) | -0.0033 (14) |
| C8 | 0.060 (2) | 0.0570 (19) | 0.0323 (15) | -0.0012 (16) | 0.0167 (14) | 0.0056 (14) |
| C9 | 0.064 (2) | 0.0488 (19) | 0.0397 (17) | -0.0095 (16) | 0.0117 (15) | 0.0002 (14) |
| C10 | 0.146 (5) | 0.086 (2) | 0.060 (3) | -0.022 (3) | 0.040 (3) | 0.009 (2) |
| C11 | 0.140 (5) | 0.142 (5) | 0.081 (4) | -0.004 (4) | 0.033 (3) | 0.006 (3) |
| C12 | 0.132 (4) | 0.078 (3) | 0.043 (2) | -0.009 (3) | 0.037 (2) | 0.0025 (19) |

| | | | | | | |
|-----|-----------|-----------|-------------|------------|-------------|-------------|
| C13 | 0.162 (6) | 0.125 (5) | 0.059 (3) | 0.014 (4) | -0.003 (3) | 0.006 (3) |
| C14 | 0.107 (3) | 0.068 (3) | 0.069 (3) | -0.022 (2) | 0.024 (2) | -0.003 (2) |
| C15 | 0.116 (4) | 0.083 (3) | 0.094 (4) | -0.010 (3) | 0.016 (3) | -0.003 (3) |
| C16 | 0.135 (5) | 0.082 (3) | 0.089 (4) | -0.010 (3) | 0.016 (3) | -0.024 (3) |
| C17 | 0.076 (3) | 0.117 (4) | 0.053 (2) | 0.008 (3) | 0.033 (2) | 0.023 (2) |
| C18 | 0.069 (2) | 0.077 (2) | 0.0439 (18) | 0.007 (2) | 0.0201 (17) | 0.0133 (18) |

Geometric parameters (Å, °)

| | | | |
|------------|-------------|---------------|-----------|
| O—C7 | 1.231 (4) | C8—C9 | 1.358 (4) |
| S1—C9 | 1.727 (3) | C10—C11 | 1.405 (7) |
| S1—C6 | 1.738 (3) | C10—H10A | 0.9700 |
| C1—C6 | 1.394 (4) | C10—H10B | 0.9700 |
| C1—C2 | 1.400 (5) | C11—H11A | 0.9600 |
| C1—H1A | 0.9300 | C11—H11B | 0.9600 |
| N1—C2 | 1.378 (4) | C11—H11C | 0.9600 |
| N1—C12 | 1.460 (5) | C12—C13 | 1.502 (7) |
| N1—C10 | 1.512 (6) | C12—H12A | 0.9700 |
| S2—C9 | 1.740 (3) | C12—H12B | 0.9700 |
| S2—C14 | 1.843 (4) | C13—H13A | 0.9600 |
| N2—C18 | 1.335 (4) | C13—H13B | 0.9600 |
| N2—N3 | 1.353 (4) | C13—H13C | 0.9600 |
| N2—C8 | 1.433 (4) | C14—C15 | 1.454 (6) |
| C2—C3 | 1.416 (5) | C14—H14A | 0.9700 |
| C3—C4 | 1.363 (4) | C14—H14B | 0.9700 |
| C3—H3A | 0.9300 | C15—C16 | 1.520 (6) |
| N3—C17 | 1.308 (4) | C15—H15A | 0.9700 |
| C4—C5 | 1.404 (4) | C15—H15B | 0.9700 |
| C4—H4A | 0.9300 | C16—H16A | 0.9600 |
| N4—C18 | 1.314 (4) | C16—H16B | 0.9600 |
| N4—C17 | 1.350 (5) | C16—H16C | 0.9600 |
| C5—C6 | 1.401 (4) | C17—H17A | 0.9300 |
| C5—C7 | 1.460 (4) | C18—H18A | 0.9300 |
| C7—C8 | 1.452 (5) | | |
| C9—S1—C6 | 103.07 (15) | C10—C11—H11A | 109.5 |
| C6—C1—C2 | 120.3 (3) | C10—C11—H11B | 109.5 |
| C6—C1—H1A | 119.9 | H11A—C11—H11B | 109.5 |
| C2—C1—H1A | 119.9 | C10—C11—H11C | 109.5 |
| C2—N1—C12 | 120.6 (3) | H11A—C11—H11C | 109.5 |
| C2—N1—C10 | 119.8 (3) | H11B—C11—H11C | 109.5 |
| C12—N1—C10 | 116.9 (3) | N1—C12—C13 | 113.0 (4) |
| C9—S2—C14 | 104.25 (17) | N1—C12—H12A | 109.0 |
| C18—N2—N3 | 108.8 (3) | C13—C12—H12A | 109.0 |
| C18—N2—C8 | 129.4 (3) | N1—C12—H12B | 109.0 |
| N3—N2—C8 | 121.7 (3) | C13—C12—H12B | 109.0 |
| N1—C2—C1 | 121.4 (3) | H12A—C12—H12B | 107.8 |
| N1—C2—C3 | 121.3 (3) | C12—C13—H13A | 109.5 |

| | | | |
|---------------|-------------|----------------|------------|
| C1—C2—C3 | 117.3 (3) | C12—C13—H13B | 109.5 |
| C4—C3—C2 | 121.4 (3) | H13A—C13—H13B | 109.5 |
| C4—C3—H3A | 119.3 | C12—C13—H13C | 109.5 |
| C2—C3—H3A | 119.3 | H13A—C13—H13C | 109.5 |
| C17—N3—N2 | 102.4 (3) | H13B—C13—H13C | 109.5 |
| C3—C4—C5 | 122.4 (3) | C15—C14—S2 | 110.1 (3) |
| C3—C4—H4A | 118.8 | C15—C14—H14A | 109.6 |
| C5—C4—H4A | 118.8 | S2—C14—H14A | 109.6 |
| C18—N4—C17 | 101.6 (3) | C15—C14—H14B | 109.6 |
| C6—C5—C4 | 116.2 (3) | S2—C14—H14B | 109.6 |
| C6—C5—C7 | 124.1 (3) | H14A—C14—H14B | 108.2 |
| C4—C5—C7 | 119.7 (3) | C14—C15—C16 | 111.5 (4) |
| C1—C6—C5 | 122.4 (3) | C14—C15—H15A | 109.3 |
| C1—C6—S1 | 113.6 (2) | C16—C15—H15A | 109.3 |
| C5—C6—S1 | 123.9 (2) | C14—C15—H15B | 109.3 |
| O—C7—C8 | 120.6 (3) | C16—C15—H15B | 109.3 |
| O—C7—C5 | 121.6 (3) | H15A—C15—H15B | 108.0 |
| C8—C7—C5 | 117.8 (3) | C15—C16—H16A | 109.5 |
| C9—C8—N2 | 117.6 (3) | C15—C16—H16B | 109.5 |
| C9—C8—C7 | 126.9 (3) | H16A—C16—H16B | 109.5 |
| N2—C8—C7 | 115.5 (3) | C15—C16—H16C | 109.5 |
| C8—C9—S1 | 123.6 (3) | H16A—C16—H16C | 109.5 |
| C8—C9—S2 | 120.1 (3) | H16B—C16—H16C | 109.5 |
| S1—C9—S2 | 116.33 (18) | N3—C17—N4 | 115.7 (3) |
| C11—C10—N1 | 109.5 (5) | N3—C17—H17A | 122.1 |
| C11—C10—H10A | 109.8 | N4—C17—H17A | 122.1 |
| N1—C10—H10A | 109.8 | N4—C18—N2 | 111.4 (3) |
| C11—C10—H10B | 109.8 | N4—C18—H18A | 124.3 |
| N1—C10—H10B | 109.8 | N2—C18—H18A | 124.3 |
| H10A—C10—H10B | 108.2 | | |
| | | | |
| C12—N1—C2—C1 | 2.4 (6) | N3—N2—C8—C9 | 90.7 (4) |
| C10—N1—C2—C1 | -158.5 (4) | C18—N2—C8—C7 | 89.7 (4) |
| C12—N1—C2—C3 | -178.1 (4) | N3—N2—C8—C7 | -88.7 (4) |
| C10—N1—C2—C3 | 21.0 (6) | O—C7—C8—C9 | 175.5 (3) |
| C6—C1—C2—N1 | 177.0 (3) | C5—C7—C8—C9 | -5.4 (5) |
| C6—C1—C2—C3 | -2.5 (5) | O—C7—C8—N2 | -5.1 (5) |
| N1—C2—C3—C4 | -178.5 (4) | C5—C7—C8—N2 | 173.9 (3) |
| C1—C2—C3—C4 | 1.0 (6) | N2—C8—C9—S1 | 178.3 (2) |
| C18—N2—N3—C17 | -0.3 (4) | C7—C8—C9—S1 | -2.3 (5) |
| C8—N2—N3—C17 | 178.4 (3) | N2—C8—C9—S2 | -2.0 (4) |
| C2—C3—C4—C5 | 0.7 (6) | C7—C8—C9—S2 | 177.4 (3) |
| C3—C4—C5—C6 | -0.8 (5) | C6—S1—C9—C8 | 6.2 (4) |
| C3—C4—C5—C7 | 179.2 (4) | C6—S1—C9—S2 | -173.5 (2) |
| C2—C1—C6—C5 | 2.5 (5) | C14—S2—C9—C8 | 179.0 (3) |
| C2—C1—C6—S1 | -175.3 (3) | C14—S2—C9—S1 | -1.2 (3) |
| C4—C5—C6—C1 | -0.7 (5) | C2—N1—C10—C11 | -98.6 (5) |
| C7—C5—C6—C1 | 179.2 (3) | C12—N1—C10—C11 | 99.8 (5) |

| | | | |
|--------------|------------|----------------|------------|
| C4—C5—C6—S1 | 176.8 (3) | C2—N1—C12—C13 | -82.1 (5) |
| C7—C5—C6—S1 | -3.2 (5) | C10—N1—C12—C13 | 79.4 (5) |
| C9—S1—C6—C1 | 174.2 (3) | C9—S2—C14—C15 | -178.2 (4) |
| C9—S1—C6—C5 | -3.6 (3) | S2—C14—C15—C16 | -179.9 (4) |
| C6—C5—C7—O | -172.8 (3) | N2—N3—C17—N4 | -0.1 (5) |
| C4—C5—C7—O | 7.2 (5) | C18—N4—C17—N3 | 0.5 (5) |
| C6—C5—C7—C8 | 8.2 (5) | C17—N4—C18—N2 | -0.6 (5) |
| C4—C5—C7—C8 | -171.9 (3) | N3—N2—C18—N4 | 0.6 (5) |
| C18—N2—C8—C9 | -90.9 (4) | C8—N2—C18—N4 | -177.9 (3) |

Hydrogen-bond geometry (Å, °)

| <i>D—H...A</i> | <i>D—H</i> | <i>H...A</i> | <i>D...A</i> | <i>D—H...A</i> |
|--------------------------|------------|--------------|--------------|----------------|
| C1—H1A...N4 ⁱ | 0.93 | 2.57 | 3.451 (5) | 159 |

Symmetry code: (i) *x*, -*y*+2, *z*+1/2.