

1-(4-Methylphenyl)-2-(phenylsulfonyl)-ethanone

Hatem A. Abdel-Aziz,^a Khalid A. Al-Rashood,^a Hazem A. Ghabbour,^a Hoong-Kun Fun^{b*‡} and Tze Shyang Chia^b

^aDepartment of Pharmaceutical Chemistry, College of Pharmacy, King Saud University, PO Box 2457, Riyadh 11451, Saudi Arabia, and ^bX-ray Crystallography Unit, School of Physics, Universiti Sains Malaysia, 11800 USM, Penang, Malaysia
Correspondence e-mail: hkfun@usm.my

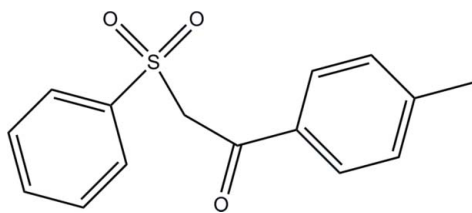
Received 5 March 2012; accepted 5 March 2012

Key indicators: single-crystal X-ray study; $T = 296$ K; mean $\sigma(\text{C}-\text{C}) = 0.005$ Å; R factor = 0.045; wR factor = 0.124; data-to-parameter ratio = 14.3.

In the title compound, $\text{C}_{15}\text{H}_{14}\text{O}_3\text{S}$, the benzene and phenyl rings make a dihedral angle of $33.56(16)^\circ$. In the crystal, molecules are linked by $\text{C}-\text{H}\cdots\text{O}$ hydrogen bonds into a layer parallel to the ab plane.

Related literature

For background to the chemistry of sulfones, see: Xiang *et al.* (2007); Abdel-Aziz & Mekawey (2009); Abdel-Aziz *et al.* (2010). For a related structure, see: Abdel-Aziz *et al.* (2011). For reference bond lengths, see: Allen *et al.* (1987).



Experimental

Crystal data

$\text{C}_{15}\text{H}_{14}\text{O}_3\text{S}$

$M_r = 274.32$

Orthorhombic, $Pbca$

$a = 11.5555(12)$ Å

$b = 10.1981(11)$ Å

$c = 22.843(2)$ Å

$V = 2692.0(5)$ Å³

$Z = 8$

Cu $K\alpha$ radiation

$\mu = 2.15$ mm⁻¹

$T = 296$ K

$0.55 \times 0.12 \times 0.04$ mm

Data collection

Bruker SMART APEXII CCD

area-detector diffractometer

Absorption correction: multi-scan

(*SADABS*; Bruker, 2009)

$T_{\min} = 0.386$, $T_{\max} = 0.919$

10168 measured reflections

2487 independent reflections

1446 reflections with $I > 2\sigma(I)$

$R_{\text{int}} = 0.068$

Refinement

$R[F^2 > 2\sigma(F^2)] = 0.045$

$wR(F^2) = 0.124$

$S = 0.89$

2487 reflections

174 parameters

H-atom parameters constrained

$\Delta\rho_{\text{max}} = 0.19$ e Å⁻³

$\Delta\rho_{\text{min}} = -0.25$ e Å⁻³

Table 1

Hydrogen-bond geometry (Å, °).

$D-H\cdots A$	$D-H$	$H\cdots A$	$D\cdots A$	$D-H\cdots A$
$\text{C7}-\text{H7B}\cdots\text{O1}^i$	0.97	2.42	3.366 (3)	164
$\text{C10}-\text{H10A}\cdots\text{O3}^{ii}$	0.93	2.48	3.342 (4)	154

Symmetry codes: (i) $-x + \frac{3}{2}, y + \frac{1}{2}, z$; (ii) $x - \frac{1}{2}, y, -z + \frac{1}{2}$.

Data collection: *APEX2* (Bruker, 2009); cell refinement: *SAINT* (Bruker, 2009); data reduction: *SAINT*; program(s) used to solve structure: *SHELXTL* (Sheldrick, 2008); program(s) used to refine structure: *SHELXTL*; molecular graphics: *SHELXTL*; software used to prepare material for publication: *SHELXTL* and *PLATON* (Spek, 2009).

HAAA, KAAR and HAG thank the Deanship of Scientific Research and the Research Center, College of Pharmacy, King Saud University. HKF and TSC thank Universiti Sains Malaysia (USM) for the Research University Grant (1001/PFIZIK/811160). TSC also thanks the Malaysian Government and USM for the award of the post of Research Officer under the Research University Grant (1001/PSKBP/8630013).

Supplementary data and figures for this paper are available from the IUCr electronic archives (Reference: IS5087).

References

- Abdel-Aziz, H. A., Abdel-Wahab, B. F. & Badria, F. A. (2010). *Arch. Pharm.* **343**, 152–159.
- Abdel-Aziz, H. A. & Mekawey, A. A. I. (2009). *Eur. J. Med. Chem.* **44**, 3985–4997.
- Abdel-Aziz, H. A., Ng, S. W. & Tiekink, E. R. T. (2011). *Acta Cryst.* **E67**, o2640.
- Allen, F. H., Kennard, O., Watson, D. G., Brammer, L., Orpen, A. G. & Taylor, R. (1987). *J. Chem. Soc. Perkin Trans. 2*, pp. S1–19.
- Bruker (2009). *SADABS*, *APEX2* and *SAINT*. Bruker AXS Inc., Madison, Wisconsin, USA.
- Sheldrick, G. M. (2008). *Acta Cryst.* **A64**, 112–122.
- Spek, A. L. (2009). *Acta Cryst.* **D65**, 148–155.
- Xiang, J., Ipek, M., Suri, V., Tam, M., Xing, Y., Huang, N., Zhang, Y., Tobin, J., Mansour, T. S. & McKew, J. (2007). *Bioorg. Med. Chem.* **15**, 4327–4664.

‡ Thomson Reuters ResearcherID: A-3561-2009.

supporting information

Acta Cryst. (2012). E68, o1033 [https://doi.org/10.1107/S160053681200966X]

1-(4-Methylphenyl)-2-(phenylsulfonyl)ethanone

Hatem A. Abdel-Aziz, Khalid A. Al-Rashood, Hazem A. Ghabbour, Hoong-Kun Fun and Tze Shyang Chia

S1. Comment

In the title compound (Fig. 1), the two aromatic rings (C1–C6 and C9–C14) form a dihedral angle of 33.56 (16)° with each other. Bond lengths (Allen *et al.*, 1987) and angles are within normal ranges and are comparable to the related structure (Abdel-Aziz *et al.*, 2011). In the crystal packing (Fig. 2), the molecules are linked by intermolecular C7—H7B···O1 and C10—H10A···O3 hydrogen bonds (Table 1) into two-dimensional networks parallel to the *ab* plane.

S2. Experimental

The title compound was prepared according to the reported method (Xiang *et al.*, 2007). Single crystals of the title compound were obtained by slow evaporation from an ethanol solution at room temperature.

S3. Refinement

All H atoms were positioned geometrically (C—H = 0.93, 0.96 and 0.97 Å) and refined using a riding model, with $U_{\text{iso}}(\text{H}) = 1.2$ and $1.5U_{\text{eq}}(\text{C})$.

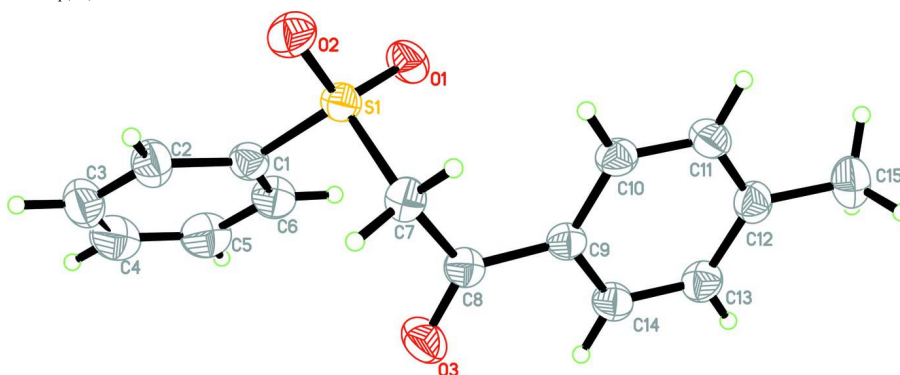


Figure 1

The molecular structure of the title compound with atom labels and 30% probability displacement ellipsoids.

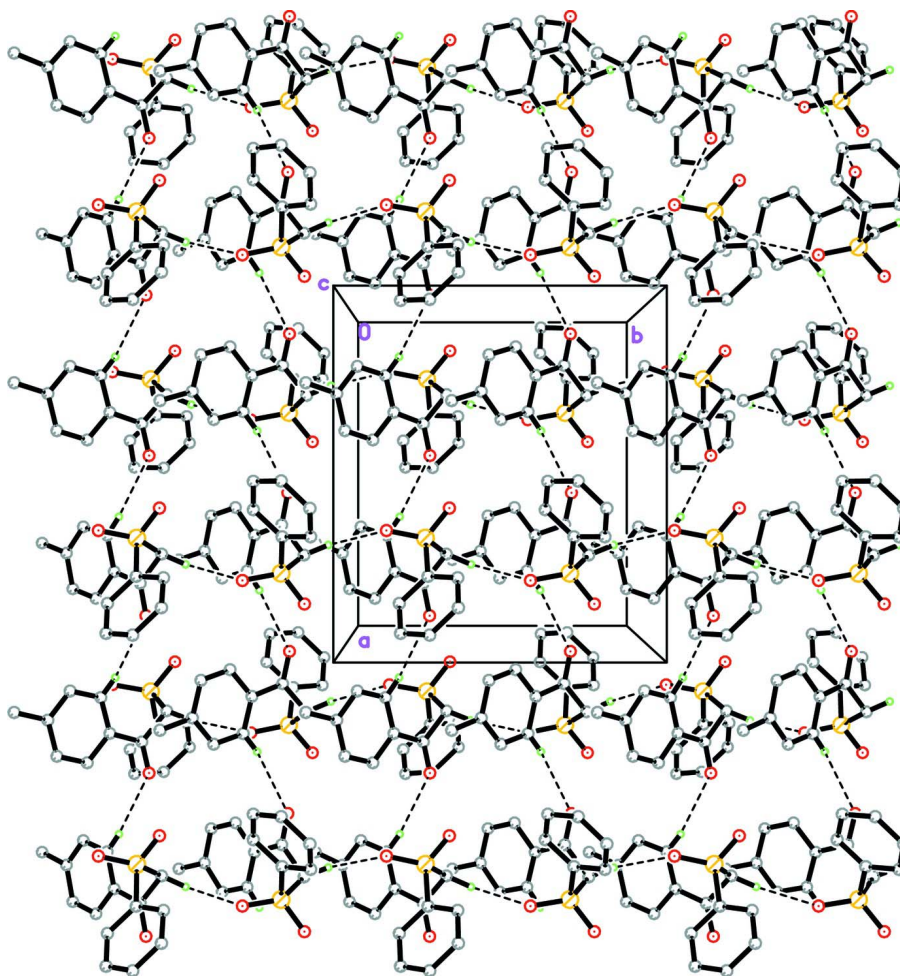


Figure 2

The crystal packing of the title compound. The dashed lines represent the hydrogen bonds. For clarity sake, hydrogen atoms not involved in hydrogen bonding have been omitted.

1-(4-Methylphenyl)-2-(phenylsulfonyl)ethanone

Crystal data

$C_{15}H_{14}O_3S$

$M_r = 274.32$

Orthorhombic, *Pbca*

Hall symbol: -P 2ac 2ab

$a = 11.5555$ (12) Å

$b = 10.1981$ (11) Å

$c = 22.843$ (2) Å

$V = 2692.0$ (5) Å³

$Z = 8$

$F(000) = 1152$

$D_x = 1.354$ Mg m⁻³

Cu *Kα* radiation, $\lambda = 1.54178$ Å

Cell parameters from 484 reflections

$\theta = 3.9$ – 33.7°

$\mu = 2.15$ mm⁻¹

$T = 296$ K

Needle, colourless

$0.55 \times 0.12 \times 0.04$ mm

Data collection

Bruker SMART APEXII CCD area-detector
diffractometer

Radiation source: fine-focus sealed tube

Graphite monochromator

φ and ω scans

Absorption correction: multi-scan

(*SADABS*; Bruker, 2009)

$T_{\min} = 0.386$, $T_{\max} = 0.919$

10168 measured reflections
 2487 independent reflections
 1446 reflections with $I > 2\sigma(I)$
 $R_{\text{int}} = 0.068$

$\theta_{\text{max}} = 70.0^\circ$, $\theta_{\text{min}} = 3.9^\circ$
 $h = -11 \rightarrow 14$
 $k = -9 \rightarrow 11$
 $l = -27 \rightarrow 17$

Refinement

Refinement on F^2
 Least-squares matrix: full
 $R[F^2 > 2\sigma(F^2)] = 0.045$
 $wR(F^2) = 0.124$
 $S = 0.89$
 2487 reflections
 174 parameters
 0 restraints
 Primary atom site location: structure-invariant
 direct methods
 Secondary atom site location: difference Fourier
 map

Hydrogen site location: inferred from
 neighbouring sites
 H-atom parameters constrained
 $w = 1/[\sigma^2(F_o^2) + (0.0623P)^2]$
 where $P = (F_o^2 + 2F_c^2)/3$
 $(\Delta/\sigma)_{\text{max}} < 0.001$
 $\Delta\rho_{\text{max}} = 0.19 \text{ e } \text{\AA}^{-3}$
 $\Delta\rho_{\text{min}} = -0.25 \text{ e } \text{\AA}^{-3}$
 Extinction correction: *SHELXTL* (Sheldrick,
 2008), $F_c^* = kF_c[1 + 0.001x F_c^2 \lambda^3 / \sin(2\theta)]^{-1/4}$
 Extinction coefficient: 0.00131 (15)

Special details

Geometry. All e.s.d.'s (except the e.s.d. in the dihedral angle between two l.s. planes) are estimated using the full covariance matrix. The cell e.s.d.'s are taken into account individually in the estimation of e.s.d.'s in distances, angles and torsion angles; correlations between e.s.d.'s in cell parameters are only used when they are defined by crystal symmetry. An approximate (isotropic) treatment of cell e.s.d.'s is used for estimating e.s.d.'s involving l.s. planes.

Refinement. Refinement of F^2 against ALL reflections. The weighted R -factor wR and goodness of fit S are based on F^2 , conventional R -factors R are based on F , with F set to zero for negative F^2 . The threshold expression of $F^2 > \sigma(F^2)$ is used only for calculating R -factors(gt) *etc.* and is not relevant to the choice of reflections for refinement. R -factors based on F^2 are statistically about twice as large as those based on F , and R -factors based on ALL data will be even larger.

Fractional atomic coordinates and isotropic or equivalent isotropic displacement parameters (\AA^2)

	x	y	z	$U_{\text{iso}}^*/U_{\text{eq}}$
S1	0.69612 (6)	0.25970 (7)	0.35841 (3)	0.0496 (2)
O1	0.67330 (18)	0.12398 (18)	0.34807 (10)	0.0602 (6)
O2	0.60372 (18)	0.3428 (2)	0.37858 (10)	0.0666 (6)
O3	0.94161 (18)	0.2723 (2)	0.27397 (11)	0.0727 (7)
C1	0.8099 (2)	0.2698 (3)	0.40947 (13)	0.0498 (7)
C2	0.8117 (3)	0.3717 (3)	0.44912 (14)	0.0652 (9)
H2A	0.7562	0.4377	0.4476	0.078*
C3	0.8977 (3)	0.3739 (4)	0.49129 (15)	0.0791 (11)
H3A	0.8998	0.4410	0.5188	0.095*
C4	0.9795 (4)	0.2774 (4)	0.49242 (17)	0.0835 (12)
H4A	1.0372	0.2799	0.5208	0.100*
C5	0.9782 (3)	0.1777 (4)	0.45296 (17)	0.0797 (11)
H5A	1.0354	0.1135	0.4542	0.096*
C6	0.8919 (3)	0.1715 (3)	0.41090 (14)	0.0636 (8)
H6A	0.8894	0.1026	0.3842	0.076*
C7	0.7484 (3)	0.3314 (3)	0.29256 (12)	0.0513 (7)
H7A	0.6841	0.3433	0.2658	0.062*
H7B	0.7799	0.4174	0.3013	0.062*
C8	0.8414 (2)	0.2493 (3)	0.26254 (12)	0.0503 (7)

C9	0.8077 (2)	0.1467 (3)	0.22005 (12)	0.0459 (6)
C10	0.6939 (2)	0.1183 (3)	0.20632 (13)	0.0520 (7)
H10A	0.6344	0.1646	0.2243	0.062*
C11	0.6681 (3)	0.0219 (3)	0.16615 (13)	0.0575 (8)
H11A	0.5910	0.0031	0.1580	0.069*
C12	0.7533 (3)	-0.0470 (3)	0.13781 (13)	0.0559 (7)
C13	0.8667 (3)	-0.0200 (3)	0.15236 (14)	0.0576 (8)
H13A	0.9258	-0.0669	0.1344	0.069*
C14	0.8942 (2)	0.0743 (3)	0.19262 (13)	0.0549 (7)
H14A	0.9714	0.0902	0.2017	0.066*
C15	0.7230 (3)	-0.1491 (3)	0.09252 (15)	0.0753 (10)
H15B	0.6483	-0.1854	0.1012	0.113*
H15C	0.7799	-0.2176	0.0931	0.113*
H15A	0.7214	-0.1093	0.0545	0.113*

Atomic displacement parameters (Å²)

	U^{11}	U^{22}	U^{33}	U^{12}	U^{13}	U^{23}
S1	0.0458 (4)	0.0490 (4)	0.0540 (4)	-0.0012 (3)	0.0010 (3)	-0.0013 (3)
O1	0.0659 (14)	0.0448 (12)	0.0700 (14)	-0.0143 (9)	-0.0041 (11)	-0.0014 (10)
O2	0.0541 (13)	0.0746 (16)	0.0710 (15)	0.0124 (10)	0.0071 (11)	-0.0079 (11)
O3	0.0480 (13)	0.0813 (17)	0.0887 (17)	-0.0041 (11)	-0.0105 (12)	-0.0201 (13)
C1	0.0506 (17)	0.0480 (17)	0.0509 (15)	-0.0049 (13)	0.0002 (13)	0.0035 (12)
C2	0.078 (2)	0.057 (2)	0.0599 (19)	-0.0065 (16)	-0.0027 (18)	-0.0040 (15)
C3	0.093 (3)	0.084 (3)	0.061 (2)	-0.024 (2)	-0.007 (2)	-0.0066 (19)
C4	0.074 (3)	0.114 (4)	0.062 (2)	-0.018 (2)	-0.0189 (19)	0.023 (2)
C5	0.067 (2)	0.094 (3)	0.078 (3)	0.006 (2)	-0.007 (2)	0.018 (2)
C6	0.0573 (19)	0.065 (2)	0.068 (2)	0.0057 (15)	-0.0047 (17)	0.0045 (16)
C7	0.0611 (18)	0.0432 (17)	0.0495 (16)	0.0030 (13)	-0.0005 (14)	0.0020 (12)
C8	0.0482 (17)	0.0517 (17)	0.0508 (16)	0.0008 (13)	-0.0023 (13)	0.0039 (13)
C9	0.0421 (15)	0.0466 (16)	0.0491 (15)	0.0022 (11)	0.0002 (13)	0.0034 (12)
C10	0.0408 (15)	0.0613 (18)	0.0540 (17)	0.0053 (13)	0.0030 (14)	0.0020 (13)
C11	0.0465 (18)	0.066 (2)	0.0599 (18)	-0.0071 (14)	-0.0064 (15)	0.0013 (15)
C12	0.0628 (19)	0.0579 (18)	0.0471 (15)	-0.0022 (14)	-0.0031 (16)	0.0031 (14)
C13	0.0544 (19)	0.0594 (19)	0.0590 (18)	0.0086 (13)	0.0040 (16)	-0.0045 (15)
C14	0.0412 (16)	0.0636 (19)	0.0599 (18)	0.0035 (13)	-0.0013 (14)	-0.0034 (14)
C15	0.093 (3)	0.071 (2)	0.061 (2)	-0.0040 (18)	-0.0110 (19)	-0.0085 (17)

Geometric parameters (Å, °)

S1—O1	1.4287 (19)	C7—H7A	0.9700
S1—O2	1.439 (2)	C7—H7B	0.9700
S1—C1	1.760 (3)	C8—C9	1.480 (4)
S1—C7	1.778 (3)	C9—C10	1.382 (4)
O3—C8	1.210 (3)	C9—C14	1.391 (4)
C1—C2	1.379 (4)	C10—C11	1.377 (4)
C1—C6	1.380 (4)	C10—H10A	0.9300
C2—C3	1.385 (4)	C11—C12	1.373 (4)

C2—H2A	0.9300	C11—H11A	0.9300
C3—C4	1.364 (5)	C12—C13	1.379 (4)
C3—H3A	0.9300	C12—C15	1.509 (4)
C4—C5	1.359 (5)	C13—C14	1.368 (4)
C4—H4A	0.9300	C13—H13A	0.9300
C5—C6	1.386 (5)	C14—H14A	0.9300
C5—H5A	0.9300	C15—H15B	0.9600
C6—H6A	0.9300	C15—H15C	0.9600
C7—C8	1.525 (4)	C15—H15A	0.9600
O1—S1—O2	119.10 (13)	H7A—C7—H7B	107.7
O1—S1—C1	107.69 (13)	O3—C8—C9	122.0 (3)
O2—S1—C1	107.92 (14)	O3—C8—C7	118.1 (3)
O1—S1—C7	108.74 (14)	C9—C8—C7	119.9 (2)
O2—S1—C7	106.32 (14)	C10—C9—C14	118.0 (3)
C1—S1—C7	106.42 (14)	C10—C9—C8	123.2 (3)
C2—C1—C6	121.4 (3)	C14—C9—C8	118.8 (3)
C2—C1—S1	119.4 (2)	C11—C10—C9	120.4 (3)
C6—C1—S1	119.1 (2)	C11—C10—H10A	119.8
C1—C2—C3	118.7 (3)	C9—C10—H10A	119.8
C1—C2—H2A	120.7	C12—C11—C10	121.6 (3)
C3—C2—H2A	120.7	C12—C11—H11A	119.2
C4—C3—C2	119.9 (4)	C10—C11—H11A	119.2
C4—C3—H3A	120.0	C11—C12—C13	117.7 (3)
C2—C3—H3A	120.0	C11—C12—C15	120.7 (3)
C5—C4—C3	121.3 (4)	C13—C12—C15	121.6 (3)
C5—C4—H4A	119.3	C14—C13—C12	121.5 (3)
C3—C4—H4A	119.3	C14—C13—H13A	119.2
C4—C5—C6	120.1 (4)	C12—C13—H13A	119.2
C4—C5—H5A	120.0	C13—C14—C9	120.6 (3)
C6—C5—H5A	120.0	C13—C14—H14A	119.7
C1—C6—C5	118.5 (3)	C9—C14—H14A	119.7
C1—C6—H6A	120.7	C12—C15—H15B	109.5
C5—C6—H6A	120.7	C12—C15—H15C	109.5
C8—C7—S1	113.21 (19)	H15B—C15—H15C	109.5
C8—C7—H7A	108.9	C12—C15—H15A	109.5
S1—C7—H7A	108.9	H15B—C15—H15A	109.5
C8—C7—H7B	108.9	H15C—C15—H15A	109.5
S1—C7—H7B	108.9		
O1—S1—C1—C2	-146.6 (2)	S1—C7—C8—O3	-92.6 (3)
O2—S1—C1—C2	-16.8 (3)	S1—C7—C8—C9	88.4 (3)
C7—S1—C1—C2	97.0 (3)	O3—C8—C9—C10	179.8 (3)
O1—S1—C1—C6	30.0 (3)	C7—C8—C9—C10	-1.2 (4)
O2—S1—C1—C6	159.8 (2)	O3—C8—C9—C14	0.2 (4)
C7—S1—C1—C6	-86.4 (3)	C7—C8—C9—C14	179.1 (3)
C6—C1—C2—C3	-0.4 (5)	C14—C9—C10—C11	-0.6 (4)
S1—C1—C2—C3	176.1 (2)	C8—C9—C10—C11	179.7 (3)

C1—C2—C3—C4	1.0 (5)	C9—C10—C11—C12	-1.2 (5)
C2—C3—C4—C5	-0.4 (6)	C10—C11—C12—C13	2.3 (5)
C3—C4—C5—C6	-0.8 (6)	C10—C11—C12—C15	-178.0 (3)
C2—C1—C6—C5	-0.8 (5)	C11—C12—C13—C14	-1.5 (5)
S1—C1—C6—C5	-177.3 (3)	C15—C12—C13—C14	178.7 (3)
C4—C5—C6—C1	1.4 (5)	C12—C13—C14—C9	-0.3 (5)
O1—S1—C7—C8	-46.2 (3)	C10—C9—C14—C13	1.4 (4)
O2—S1—C7—C8	-175.5 (2)	C8—C9—C14—C13	-178.9 (3)
C1—S1—C7—C8	69.6 (2)		

Hydrogen-bond geometry (Å, °)

<i>D</i> —H \cdots <i>A</i>	<i>D</i> —H	H \cdots <i>A</i>	<i>D</i> \cdots <i>A</i>	<i>D</i> —H \cdots <i>A</i>
C7—H7B \cdots O1 ⁱ	0.97	2.42	3.366 (3)	164
C10—H10A \cdots O3 ⁱⁱ	0.93	2.48	3.342 (4)	154

Symmetry codes: (i) $-x+3/2, y+1/2, z$; (ii) $x-1/2, y, -z+1/2$.