

Acta Crystallographica Section E

## Structure Reports

Online

ISSN 1600-5368

**(E)-(2-Chlorobenzylidene)amino 2-amino-4-chlorobenzoate**

Weiyang Yin,\* Zhi Wang, Ying Liang and Zi-Wen Yang

Hubei Biopesticide Engineering Research Center, Hubei Academy of Agricultural Science, Wuhan 430064, People's Republic of China  
Correspondence e-mail: yinweiyang\_2004@163.com

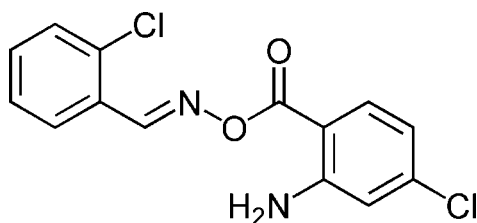
Received 29 December 2011; accepted 29 January 2012

Key indicators: single-crystal X-ray study;  $T = 100$  K; mean  $\sigma(\text{C}-\text{C}) = 0.001$  Å;  $R$  factor = 0.028;  $wR$  factor = 0.084; data-to-parameter ratio = 21.3.

In the title compound,  $\text{C}_{14}\text{H}_{10}\text{Cl}_2\text{N}_2\text{O}_2$ , the configuration about the  $\text{C}=\text{N}$  double bond is *E* and the dihedral angle between the benzene rings is  $1.75$  (5)°. An intramolecular  $\text{N}-\text{H}\cdots\text{O}$  interaction generates an  $S(6)$  ring. In the crystal, molecules are linked by  $\text{N}-\text{H}\cdots\text{O}$  hydrogen bonds, resulting in [101] chains.

## Related literature

For background to 2-amino-4-chlorobenzoic acid derivatives, see: Jahnke *et al.* (2010); Lee *et al.* (2005). For a related structure, see: Seong *et al.* (2008).



## Experimental

## Crystal data

$\text{C}_{14}\text{H}_{10}\text{Cl}_2\text{N}_2\text{O}_2$   
 $M_r = 309.14$   
Monoclinic,  $P2_1/n$   
 $a = 7.4034$  (5) Å

$b = 23.8190$  (15) Å  
 $c = 7.6362$  (5) Å  
 $\beta = 96.382$  (1)°  
 $V = 1338.23$  (15) Å<sup>3</sup>

$Z = 4$   
Mo  $K\alpha$  radiation  
 $\mu = 0.49$  mm<sup>-1</sup>

$T = 100$  K  
 $0.16 \times 0.15 \times 0.10$  mm

## Data collection

Bruker SMART APEX CCD diffractometer  
Absorption correction: multi-scan (SADABS; Bruker, 2000)  
 $T_{\min} = 0.926$ ,  $T_{\max} = 0.953$

12076 measured reflections  
3879 independent reflections  
3637 reflections with  $I > 2\sigma(I)$   
 $R_{\text{int}} = 0.015$

## Refinement

$R[F^2 > 2\sigma(F^2)] = 0.028$   
 $wR(F^2) = 0.084$   
 $S = 1.05$   
3879 reflections

182 parameters  
H-atom parameters constrained  
 $\Delta\rho_{\text{max}} = 0.53$  e Å<sup>-3</sup>  
 $\Delta\rho_{\text{min}} = -0.53$  e Å<sup>-3</sup>

Table 1

Hydrogen-bond geometry (Å, °).

$D-\text{H}\cdots A$	$D-\text{H}$	$\text{H}\cdots A$	$D\cdots A$	$D-\text{H}\cdots A$
$\text{N2}-\text{H2B}\cdots\text{O2}$	0.88	2.02	2.6653 (12)	130
$\text{N2}-\text{H2A}\cdots\text{O2}^i$	0.88	2.19	2.9332 (12)	142

Symmetry code: (i)  $x + \frac{1}{2}, -y + \frac{1}{2}, z + \frac{1}{2}$ .

Data collection: SMART (Bruker, 2000); cell refinement: SAINT (Bruker, 2000); data reduction: SAINT; program(s) used to solve structure: SHELXS97 (Sheldrick, 2008); program(s) used to refine structure: SHELXL97 (Sheldrick, 2008); molecular graphics: SHELXTL (Sheldrick, 2008); software used to prepare material for publication: SHELXTL.

The authors gratefully acknowledge financial support of this work by the Foundation of Hubei Agricultural Scientific and Technological Innovation.

Supplementary data and figures for this paper are available from the IUCr electronic archives (Reference: HB6586).

## References

- Bruker (2000). SMART, SAINT and SADABS. Bruker AXS Inc., Madison, Wisconsin, USA.  
Jahnke, W., Grotzfeld, R. M., Pelle, X., Strauss, A., Fendrich, G., Cowan-Jacob, S. W., Cotesta, S., Fabbro, D., Furet, P., Mestan, D. & Marzinzik, A. L. (2010). *J. Am. Chem. Soc.* **132**, 7043–7048.  
Lee, J., Chubb, A. J., Moman, E., McLoughlin, B. M., Sharkey, C. T., Kelly, J. G., Nolan, K. B., Devocelle, M. & Fitzgerald, D. J. (2005). *Org. Biomol. Chem.* **3**, 3678–3685.  
Seong, C. M., Park, W. K., Park, C. M., Kong, J. Y. & Park, N. S. (2008). *Bioorg. Med. Chem. Lett.* **18**, 738–743.  
Sheldrick, G. M. (2008). *Acta Cryst.* **A64**, 112–122.

## supporting information

*Acta Cryst.* (2012). E68, o770 [doi:10.1107/S1600536812003844]

**(E)-(2-Chlorobenzylidene)amino 2-amino-4-chlorobenzoate**

Weiyan Yin, Zhi Wang, Ying Liang and Zi-Wen Yang

**S1. Comment**

2-Amino-4-chlorobenzoic acid derivatives show diverse biological properties such as inhibitor of the prostaglandin H2 synthase peroxidase activity (Lee *et al.*, 2005) and allosteric inhibitors of Bcr-Abl (Jahnke *et al.*, 2010). As a part of our studies of 2-aminobenzoic acid-containing compounds with potential biological activities, we report here the crystal structure of the title compound, (I) (Fig. 1).

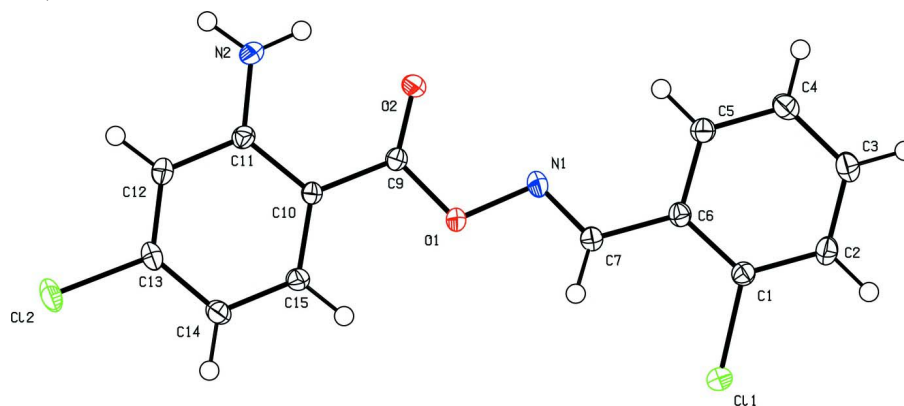
The conformation of the N—H and the C=O bonds in the 2-aminobenzoic acid segment is similar to that observed in other 2-aminobenzoic acid compound (Seong *et al.*, 2008). The dihedral angles between the two phenyl rings is 1.75 (5)°. The molecular structure is linked by N—H···O hydrogen-bonds (Table 1).

**S2. Experimental**

Dicyclohexylcarbodiimide (1.1 g, 5.0 mmol) and 4-dimethylamiopyridine (0.25 g, 1.0 mmol) was added to a mixture of 2-chlorobenzaldehyde oxime (0.78 g, 5.0 mmol) and 2-amino-4-chlorobenzoic acid (0.86 g, 5.0 mmol) in dichloromethane (30 ml). The reaction mixture was stirred for 14 h at 353 k. The product was collected by filtration give a gray solid and recrystallization from its ether solution yielded colourless prisms of (I) after a few days.

**S3. Refinement**

The H atoms were placed in calculated positions (C—H = 0.93–0.97 Å and N—H = 0.86 Å), and refined as riding with  $U_{\text{iso}}(\text{H}) = 1.2U_{\text{eq}}(\text{C}, \text{N})$ .



**Figure 1**

The molecular structure of the title compound, showing 30% probability displacement ellipsoids.

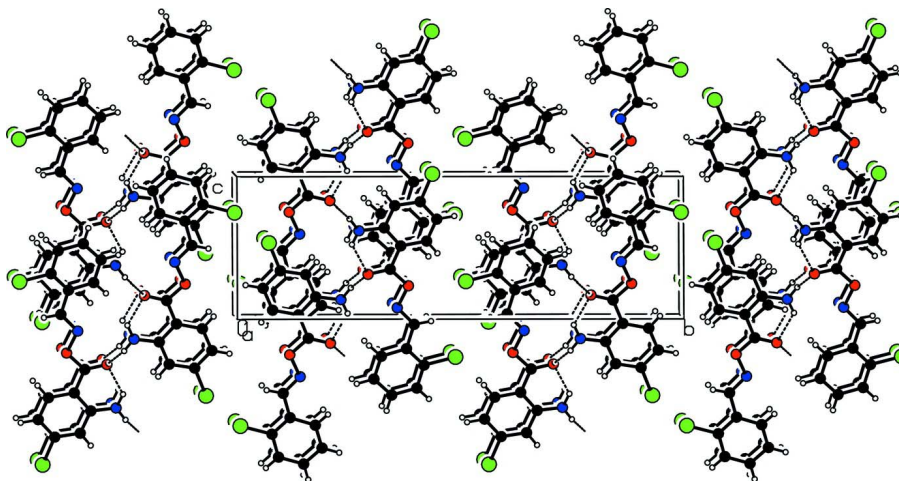


Figure 2

Crystal Packing diagram of (I). Hydrogen bonds are shown as dashed lines.

### (E)-(2-Chlorobenzylidene)amino 2-amino-4-chlorobenzoate

#### Crystal data

$C_{14}H_{10}Cl_2N_2O_2$   
 $M_r = 309.14$   
 Monoclinic,  $P2_1/n$   
 $a = 7.4034 (5) \text{ \AA}$   
 $b = 23.8190 (15) \text{ \AA}$   
 $c = 7.6362 (5) \text{ \AA}$   
 $\beta = 96.382 (1)^\circ$   
 $V = 1338.23 (15) \text{ \AA}^3$   
 $Z = 4$

$F(000) = 632$   
 $D_x = 1.534 \text{ Mg m}^{-3}$   
 Mo  $K\alpha$  radiation,  $\lambda = 0.71073 \text{ \AA}$   
 Cell parameters from 9848 reflections  
 $\theta = 2.8\text{--}32.0^\circ$   
 $\mu = 0.49 \text{ mm}^{-1}$   
 $T = 100 \text{ K}$   
 Block, colorless  
 $0.16 \times 0.15 \times 0.10 \text{ mm}$

#### Data collection

Bruker SMART APEX CCD  
 diffractometer  
 Radiation source: fine-focus sealed tube  
 Graphite monochromator  
 $\varphi$  and  $\omega$  scans  
 Absorption correction: multi-scan  
 (SADABS; Bruker, 2000)  
 $T_{\min} = 0.926$ ,  $T_{\max} = 0.953$

12076 measured reflections  
 3879 independent reflections  
 3637 reflections with  $I > 2\sigma(I)$   
 $R_{\text{int}} = 0.015$   
 $\theta_{\max} = 30.0^\circ$ ,  $\theta_{\min} = 1.7^\circ$   
 $h = -10 \rightarrow 10$   
 $k = -33 \rightarrow 32$   
 $l = -10 \rightarrow 10$

#### Refinement

Refinement on  $F^2$   
 Least-squares matrix: full  
 $R[F^2 > 2\sigma(F^2)] = 0.028$   
 $wR(F^2) = 0.084$   
 $S = 1.05$   
 3879 reflections  
 182 parameters  
 0 restraints  
 Primary atom site location: structure-invariant  
 direct methods  
 Secondary atom site location: difference Fourier  
 map

Hydrogen site location: inferred from  
 neighbouring sites  
 H-atom parameters constrained  
 $w = 1/[\sigma^2(F_o^2) + (0.0495P)^2 + 0.5103P]$   
 where  $P = (F_o^2 + 2F_c^2)/3$   
 $(\Delta/\sigma)_{\max} = 0.001$   
 $\Delta\rho_{\max} = 0.53 \text{ e \AA}^{-3}$   
 $\Delta\rho_{\min} = -0.53 \text{ e \AA}^{-3}$   
 Extinction correction: SHELXL97 (Sheldrick,  
 2008),  $F_c^* = kF_c[1 + 0.001x F_c^2 \lambda^3 / \sin(2\theta)]^{-1/4}$   
 Extinction coefficient: 0.0048 (10)

*Special details*

**Geometry.** All e.s.d.'s (except the e.s.d. in the dihedral angle between two l.s. planes) are estimated using the full covariance matrix. The cell e.s.d.'s are taken into account individually in the estimation of e.s.d.'s in distances, angles and torsion angles; correlations between e.s.d.'s in cell parameters are only used when they are defined by crystal symmetry. An approximate (isotropic) treatment of cell e.s.d.'s is used for estimating e.s.d.'s involving l.s. planes.

**Refinement.** Refinement of  $F^2$  against ALL reflections. The weighted  $R$ -factor  $wR$  and goodness of fit  $S$  are based on  $F^2$ , conventional  $R$ -factors  $R$  are based on  $F$ , with  $F$  set to zero for negative  $F^2$ . The threshold expression of  $F^2 > \sigma(F^2)$  is used only for calculating  $R$ -factors(gt) etc. and is not relevant to the choice of reflections for refinement.  $R$ -factors based on  $F^2$  are statistically about twice as large as those based on  $F$ , and  $R$ -factors based on ALL data will be even larger.

*Fractional atomic coordinates and isotropic or equivalent isotropic displacement parameters ( $\text{\AA}^2$ )*

	<i>x</i>	<i>y</i>	<i>z</i>	$U_{\text{iso}}^*/U_{\text{eq}}$
C1	0.45478 (14)	0.08217 (4)	0.17648 (13)	0.01523 (18)
C2	0.36816 (14)	0.09752 (5)	0.01219 (13)	0.01805 (19)
H2	0.3133	0.0698	-0.0659	0.022*
C3	0.36279 (15)	0.15379 (5)	-0.03640 (14)	0.0197 (2)
H3	0.3043	0.1646	-0.1483	0.024*
C4	0.44295 (15)	0.19433 (5)	0.07849 (14)	0.0190 (2)
H4	0.4383	0.2328	0.0453	0.023*
C5	0.52956 (14)	0.17850 (4)	0.24135 (13)	0.01681 (19)
H5	0.5854	0.2063	0.3184	0.020*
C6	0.53611 (13)	0.12204 (4)	0.29440 (13)	0.01445 (18)
C7	0.62742 (13)	0.10574 (4)	0.46828 (13)	0.01528 (18)
H7	0.6660	0.0682	0.4918	0.018*
C9	0.80555 (13)	0.16068 (4)	0.86039 (13)	0.01431 (18)
C10	0.89159 (13)	0.13801 (4)	1.02756 (13)	0.01340 (17)
C11	0.97488 (13)	0.17569 (4)	1.15683 (13)	0.01466 (18)
C12	1.05960 (14)	0.15271 (4)	1.31596 (13)	0.01651 (19)
H12	1.1176	0.1767	1.4044	0.020*
C13	1.05789 (14)	0.09568 (4)	1.34250 (13)	0.01679 (19)
C14	0.97615 (14)	0.05787 (4)	1.21752 (14)	0.01768 (19)
H14	0.9772	0.0186	1.2394	0.021*
C15	0.89387 (13)	0.07991 (4)	1.06104 (13)	0.01523 (18)
H15	0.8374	0.0552	0.9739	0.018*
Cl1	0.45712 (4)	0.011502 (10)	0.23325 (3)	0.01985 (8)
Cl2	1.16302 (4)	0.069412 (12)	1.54105 (3)	0.02424 (8)
N1	0.65290 (13)	0.14358 (4)	0.58580 (12)	0.01819 (18)
N2	0.97461 (13)	0.23234 (4)	1.13648 (13)	0.02025 (19)
H2A	1.0264	0.2539	1.2213	0.024*
H2B	0.9226	0.2475	1.0385	0.024*
O1	0.74622 (10)	0.11954 (3)	0.74289 (10)	0.01663 (15)
O2	0.78875 (12)	0.21027 (3)	0.82487 (11)	0.02169 (17)

*Atomic displacement parameters ( $\text{\AA}^2$ )*

	$U^{11}$	$U^{22}$	$U^{33}$	$U^{12}$	$U^{13}$	$U^{23}$
C1	0.0162 (4)	0.0151 (4)	0.0144 (4)	0.0010 (3)	0.0017 (3)	-0.0007 (3)
C2	0.0188 (4)	0.0214 (5)	0.0136 (4)	0.0015 (4)	-0.0002 (3)	-0.0026 (3)

C3	0.0209 (5)	0.0236 (5)	0.0145 (4)	0.0046 (4)	0.0011 (4)	0.0016 (4)
C4	0.0220 (5)	0.0179 (4)	0.0173 (4)	0.0025 (4)	0.0034 (4)	0.0030 (4)
C5	0.0192 (4)	0.0158 (4)	0.0156 (4)	-0.0005 (3)	0.0027 (3)	-0.0001 (3)
C6	0.0147 (4)	0.0159 (4)	0.0127 (4)	0.0010 (3)	0.0018 (3)	0.0001 (3)
C7	0.0158 (4)	0.0157 (4)	0.0140 (4)	-0.0002 (3)	0.0002 (3)	0.0006 (3)
C9	0.0131 (4)	0.0141 (4)	0.0151 (4)	-0.0011 (3)	-0.0016 (3)	0.0003 (3)
C10	0.0129 (4)	0.0133 (4)	0.0134 (4)	-0.0004 (3)	-0.0014 (3)	0.0004 (3)
C11	0.0134 (4)	0.0142 (4)	0.0160 (4)	-0.0009 (3)	-0.0001 (3)	-0.0010 (3)
C12	0.0155 (4)	0.0195 (5)	0.0139 (4)	-0.0010 (3)	-0.0008 (3)	-0.0010 (3)
C13	0.0150 (4)	0.0217 (5)	0.0133 (4)	0.0003 (3)	-0.0002 (3)	0.0041 (3)
C14	0.0181 (4)	0.0157 (4)	0.0187 (5)	-0.0008 (3)	-0.0003 (4)	0.0040 (3)
C15	0.0152 (4)	0.0134 (4)	0.0166 (4)	-0.0012 (3)	-0.0005 (3)	0.0009 (3)
C11	0.02618 (14)	0.01429 (12)	0.01833 (13)	-0.00055 (8)	-0.00089 (9)	-0.00137 (8)
C12	0.02529 (14)	0.03026 (15)	0.01581 (13)	-0.00042 (10)	-0.00378 (10)	0.00817 (9)
N1	0.0215 (4)	0.0180 (4)	0.0137 (4)	0.0028 (3)	-0.0036 (3)	0.0012 (3)
N2	0.0244 (4)	0.0134 (4)	0.0210 (4)	-0.0021 (3)	-0.0062 (3)	-0.0016 (3)
O1	0.0210 (4)	0.0146 (3)	0.0130 (3)	0.0009 (3)	-0.0041 (3)	-0.0002 (2)
O2	0.0264 (4)	0.0138 (3)	0.0223 (4)	-0.0026 (3)	-0.0090 (3)	0.0035 (3)

*Geometric parameters (Å, °)*

C1—C2	1.3928 (14)	C9—C10	1.4649 (13)
C1—C6	1.3980 (14)	C10—C15	1.4071 (13)
C1—C11	1.7378 (10)	C10—C11	1.4230 (13)
C2—C3	1.3902 (15)	C11—N2	1.3581 (13)
C2—H2	0.9500	C11—C12	1.4143 (14)
C3—C4	1.3923 (15)	C12—C13	1.3736 (14)
C3—H3	0.9500	C12—H12	0.9500
C4—C5	1.3866 (14)	C13—C14	1.3999 (15)
C4—H4	0.9500	C13—C12	1.7417 (10)
C5—C6	1.4039 (14)	C14—C15	1.3829 (14)
C5—H5	0.9500	C14—H14	0.9500
C6—C7	1.4735 (14)	C15—H15	0.9500
C7—N1	1.2712 (13)	N1—O1	1.4352 (11)
C7—H7	0.9500	N2—H2A	0.8800
C9—O2	1.2151 (12)	N2—H2B	0.8800
C9—O1	1.3677 (12)		
C2—C1—C6	121.62 (9)	C15—C10—C11	119.92 (9)
C2—C1—C11	118.01 (8)	C15—C10—C9	121.07 (9)
C6—C1—C11	120.37 (8)	C11—C10—C9	119.01 (9)
C3—C2—C1	119.34 (10)	N2—C11—C12	118.53 (9)
C3—C2—H2	120.3	N2—C11—C10	123.52 (9)
C1—C2—H2	120.3	C12—C11—C10	117.94 (9)
C2—C3—C4	120.20 (10)	C13—C12—C11	119.94 (9)
C2—C3—H3	119.9	C13—C12—H12	120.0
C4—C3—H3	119.9	C11—C12—H12	120.0
C5—C4—C3	119.92 (10)	C12—C13—C14	123.09 (9)

C5—C4—H4	120.0	C12—C13—C12	118.24 (8)
C3—C4—H4	120.0	C14—C13—C12	118.67 (8)
C4—C5—C6	121.13 (10)	C15—C14—C13	117.41 (9)
C4—C5—H5	119.4	C15—C14—H14	121.3
C6—C5—H5	119.4	C13—C14—H14	121.3
C1—C6—C5	117.79 (9)	C14—C15—C10	121.70 (9)
C1—C6—C7	121.54 (9)	C14—C15—H15	119.1
C5—C6—C7	120.67 (9)	C10—C15—H15	119.1
N1—C7—C6	117.81 (9)	C7—N1—O1	109.09 (8)
N1—C7—H7	121.1	C11—N2—H2A	120.0
C6—C7—H7	121.1	C11—N2—H2B	120.0
O2—C9—O1	122.17 (9)	H2A—N2—H2B	120.0
O2—C9—C10	125.21 (9)	C9—O1—N1	110.62 (7)
O1—C9—C10	112.61 (8)		
C6—C1—C2—C3	0.25 (16)	C15—C10—C11—N2	-178.31 (10)
C11—C1—C2—C3	179.50 (8)	C9—C10—C11—N2	2.12 (15)
C1—C2—C3—C4	-0.16 (16)	C15—C10—C11—C12	0.59 (14)
C2—C3—C4—C5	0.48 (16)	C9—C10—C11—C12	-178.99 (9)
C3—C4—C5—C6	-0.89 (16)	N2—C11—C12—C13	178.24 (10)
C2—C1—C6—C5	-0.63 (15)	C10—C11—C12—C13	-0.71 (15)
C11—C1—C6—C5	-179.86 (8)	C11—C12—C13—C14	0.47 (16)
C2—C1—C6—C7	179.90 (9)	C11—C12—C13—C12	-179.67 (8)
C11—C1—C6—C7	0.66 (14)	C12—C13—C14—C15	-0.08 (16)
C4—C5—C6—C1	0.95 (15)	C12—C13—C14—C15	-179.94 (8)
C4—C5—C6—C7	-179.57 (9)	C13—C14—C15—C10	-0.04 (15)
C1—C6—C7—N1	-160.77 (10)	C11—C10—C15—C14	-0.22 (15)
C5—C6—C7—N1	19.77 (14)	C9—C10—C15—C14	179.35 (9)
O2—C9—C10—C15	175.68 (10)	C6—C7—N1—O1	-178.86 (8)
O1—C9—C10—C15	-5.26 (14)	O2—C9—O1—N1	-4.58 (14)
O2—C9—C10—C11	-4.74 (16)	C10—C9—O1—N1	176.34 (8)
O1—C9—C10—C11	174.31 (9)	C7—N1—O1—C9	168.81 (9)

Hydrogen-bond geometry (Å, °)

<i>D</i> —H... <i>A</i>	<i>D</i> —H	H... <i>A</i>	<i>D</i> ... <i>A</i>	<i>D</i> —H... <i>A</i>
N2—H2B...O2	0.88	2.02	2.6653 (12)	130
N2—H2A...O2 <sup>i</sup>	0.88	2.19	2.9332 (12)	142

Symmetry code: (i)  $x+1/2, -y+1/2, z+1/2$ .