

Acta Crystallographica Section E

Structure Reports

Online

ISSN 1600-5368

(E)-2-[4-[(Pyridin-2-yl)methylidene-amino]phenyl]acetic acid

Zhen Nu Zheng and Soon W. Lee*

Department of Chemistry (BK21), Sungkyunkwan University, Natural Science Campus, Suwon 440-746, Republic of Korea
Correspondence e-mail: soonwlee@skku.edu

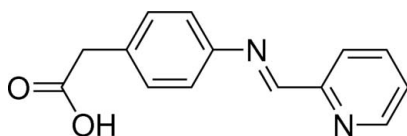
Received 28 January 2012; accepted 14 February 2012

Key indicators: single-crystal X-ray study; $T = 296$ K; mean $\sigma(\text{C}-\text{C}) = 0.002$ Å; R factor = 0.042; wR factor = 0.120; data-to-parameter ratio = 18.0.

The title molecule, $\text{C}_{14}\text{H}_{12}\text{N}_2\text{O}_2$, forms a dimeric unit linked by a pair of symmetry-equivalent $\text{O}-\text{H}\cdots\text{N}$ hydrogen bonds. The aromatic rings are significantly twisted from each other with a dihedral angle of 44.04 (4)°.

Related literature

For transition-metal or lanthanide coordination polymers containing linking ligands related to the title molecule, see: Han & Lee (2012); Jang & Lee (2010); Li *et al.* (2011); Yun *et al.* (2009); Zhang *et al.* (2004). For *d-f* metal-organic frameworks based on pyridyl-carboxylate-type linking ligands, see: Chen *et al.* (2011, 2010); Tang *et al.* (2010); Yue *et al.* (2011); Zhu *et al.* (2010).



Experimental

Crystal data

$\text{C}_{14}\text{H}_{12}\text{N}_2\text{O}_2$
 $M_r = 240.26$
Monoclinic, $P2_1/c$
 $a = 4.1558$ (1) Å
 $b = 25.7790$ (5) Å
 $c = 11.2213$ (2) Å
 $\beta = 96.623$ (1)°

$V = 1194.14$ (4) Å³
 $Z = 4$
Mo $K\alpha$ radiation
 $\mu = 0.09$ mm⁻¹
 $T = 296$ K
 $0.32 \times 0.28 \times 0.22$ mm

Data collection

Bruker APEXII CCD diffractometer
Absorption correction: multi-scan (SADABS; Sheldrick, 1996)
 $T_{\min} = 0.971$, $T_{\max} = 0.980$

19023 measured reflections
2999 independent reflections
2113 reflections with $I > 2\sigma(I)$
 $R_{\text{int}} = 0.048$

Refinement

$R[F^2 > 2\sigma(F^2)] = 0.042$
 $wR(F^2) = 0.120$
 $S = 1.05$
2999 reflections
167 parameters

H atoms treated by a mixture of independent and constrained refinement
 $\Delta\rho_{\text{max}} = 0.24$ e Å⁻³
 $\Delta\rho_{\text{min}} = -0.19$ e Å⁻³

Table 1

Hydrogen-bond geometry (Å, °).

| $D-\text{H}\cdots A$ | $D-\text{H}$ | $\text{H}\cdots A$ | $D\cdots A$ | $D-\text{H}\cdots A$ |
|--|--------------|--------------------|-------------|----------------------|
| $\text{O1}-\text{H}\text{O1}\cdots\text{N1}^i$ | 0.95 (2) | 1.73 (2) | 2.6686 (15) | 165.9 (18) |

Symmetry code: (i) $-x + 1, -y + 1, -z + 1$.

Data collection: APEX2 (Bruker, 2007); cell refinement: SAINT (Bruker, 2007); data reduction: SAINT; program(s) used to solve structure: SHELXS97 (Sheldrick, 2008); program(s) used to refine structure: SHELXL97 (Sheldrick, 2008); molecular graphics: SHELXTL (Bruker, 2007); software used to prepare material for publication: SHELXTL.

This work was supported by the Mid-career Researcher Program through the National Research Foundation of Korea funded by the Ministry of Education, Science and Technology (grant No. 2009-0079916).

Supplementary data and figures for this paper are available from the IUCr electronic archives (Reference: FY2044).

References

- Bruker (2007). APEX2, SAINT and SHELXTL. Bruker AXS Inc., Madison, Wisconsin, USA.
- Chen, Y. M., She, S. X., Zheng, L. N., Hu, B., Chen, W. Q., Xu, B., Chen, Z., Zhou, F. Y. & Li, Y. H. (2011). *Polyhedron*, **30**, 3010–3016.
- Chen, M. S., Su, Z., Chen, M., Chen, S. S., Li, Y. Z. & Sun, W. Y. (2010). *CrystEngComm*, **14**, 3267–3276.
- Han, S. H. & Lee, S. W. (2012). *Polyhedron*, **31**, 255–264.
- Jang, Y. O. & Lee, S. W. (2010). *Polyhedron*, **29**, 2731–2738.
- Li, J., Peng, Y., Liang, H. W., Yu, Y., Xin, B. J., Li, G. H., Shi, Z. & Feng, S. H. (2011). *Eur. J. Inorg. Chem.* **17**, 2712–2719.
- Sheldrick, G. M. (1996). SADABS. University of Göttingen, Germany.
- Sheldrick, G. M. (2008). *Acta Cryst.* **A64**, 112–122.
- Tang, Y. Z., Wen, H. R., Cao, Z., Wang, X. W., Huang, S. & Yu, C. L. (2010). *Inorg. Chem. Commun.* **13**, 924–928.
- Yue, S. T., Wei, Z. Q., Wang, N., Liu, W. J., Zhao, X., Chang, L. M., Liu, Y. L., Mo, H. H. & Cai, Y. P. (2011). *Inorg. Chem. Commun.* **14**, 1396–1399.
- Yun, S. Y., Lee, K. E. & Lee, S. W. (2009). *J. Mol. Struct.* **935**, 75–81.
- Zhang, J., Li, Z. J., Wen, Y. H., Kang, Y., Chen, J. K. & Yao, Y. G. (2004). *J. Mol. Struct.* **697**, 185–189.
- Zhu, L. C., Zhao, Y., Yu, S. J. & Zhao, M. M. (2010). *Inorg. Chem. Commun.* **13**, 1299–1303.

supporting information

Acta Cryst. (2012). E68, o774 [doi:10.1107/S1600536812006472]

(E)-2-{4-[(Pyridin-2-yl)methylideneamino]phenyl}acetic acid**Zhen Nu Zheng and Soon W. Lee****S1. Comment**

Coordination polymers are typically prepared by employing linking ligands possessing various terminal groups, including pyridyl–pyridyl, pyridyl–sulfonate, pyridyl–amine, carboxylate–carboxylate, and pyridyl–carboxylate terminals (Han & Lee, 2012; Jang & Lee, 2010; Li *et al.*, 2011; Yun *et al.*, 2009; Zhang *et al.*, 2004). Almost all known polymers contain either *d*- or *f*-block metals. On the other hand, several pyridyl–carboxylate type ligands were recently utilized for the preparation of coordination polymers containing both *d*- and *f*-block metals within their frameworks (Chen *et al.*, 2011; Chen *et al.*, 2010; Tang *et al.*, 2010; Yue *et al.*, 2011; Zhu *et al.*, 2010). In our ongoing study of coordination polymers, a new potential linking ligand with the pyridyl–carboxylate terminals was synthesized. We herein report its crystal structure.

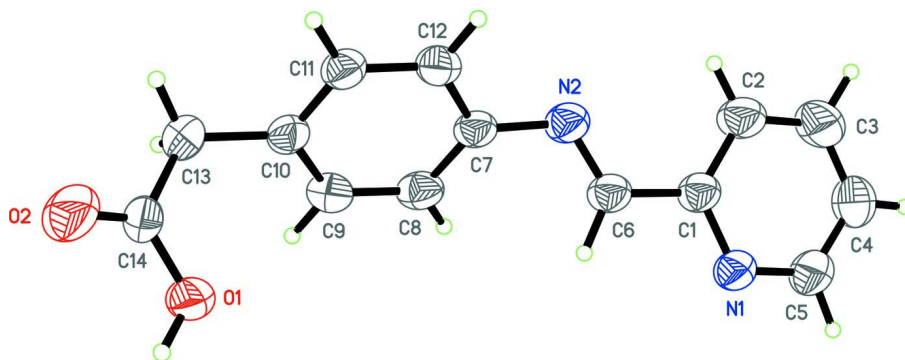
The molecular structure of the title molecule with the atom-labeling scheme is given in Figure 1, which clearly shows both the pyridyl and the carboxylate terminals. The π -conjugation system of the entire molecule is interrupted due to the CH₂ fragment in the terminal CH₂COOH group. Two planar 6-membered rings (2-pyridyl and phenyl rings) are significantly twisted from each other with the dihedral angle of 44.04 (4)°. The torsion angle of C1–C6–N2–C7 is 175.9 (1)°. The N2–C6 bond length [1.265 (2) Å] clearly indicates a C=N double bond. The N1⋯O1 and N1⋯O2 separations are 8.457 (1) and 10.249 (2) Å, respectively. As shown in Figure 2, two molecules are connected by the strong intermolecular hydrogen bonds of the O–H⋯N type (Table 1).

S2. Experimental

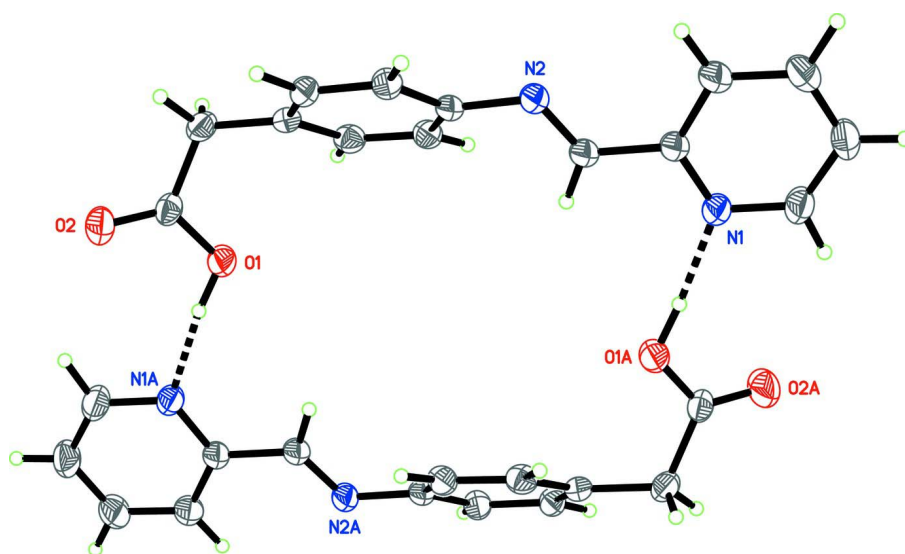
At room temperature, 4-(aminophenyl)acetic acid (1.00 g, 6.6 mmol) was dissolved in hot methanol (30 ml), and then 2-pyridinecarboxaldehyde (0.71 g, 6.6 mmol) was added slowly. The mixture was refluxed at 65 °C for 2 h. After being slowly air-cooled, the resulting solution was filtered and concentrated to one-fourth of its original volume with a rotary evaporator, and then allowed to stand for 24 h. The resulting green crystals were separated by filtration, washed with methanol (10 ml × 3), and then vacuum-dried to give the title compound (1.34 g, 5.6 mmol, 85.0% yield). mp: 411–413 K. ¹H NMR (500 MHz, CD₃SOCD₃, δ): 8.70–8.71 (m, 1H, pyridine N–CH), 8.58 (s, 1H, N=CH), 8.14 (d, 1H, aromatic proton), 7.91–7.95 (m, 1H, aromatic proton), 7.49–7.52 (m, 1H, aromatic proton), 7.27–7.33 (m, 4H, aromatic protons), 3.60 (s, 2H, CH₂). ¹³C{¹H} NMR (125 MHz, CD₃SOCD₃, δ): 173.3, 161.1, 154.8, 150.3, 149.6, 137.6, 134.5, 130.9, 126.3, 122.4, 121.9, 40.5. IR (KBr, cm⁻¹): 3057 (w), 2885 (w), 2826 (w), 2109 (w), 2014 (w), 1925(w), 1735 (m), 1635 (s), 1508 (s), 1461 (m), 1385 (w), 1142 (m), 1023 (m), 856 (m), 803 (w), 776 (w), 724 (w), 612 (w).

S3. Refinement

All non-hydrogen atoms were refined anisotropically. C-bound H atoms were positioned geometrically [C–H = 0.93–0.97 Å] and allowed to ride on their parent atoms, with $U_{\text{iso}}(\text{H}) = 1.2U_{\text{eq}}(\text{C})$. Atom HO1 was located in a difference Fourier map and refined isotropically.

**Figure 1**

The molecular structure of the title compound showing the atomic numbering and 50% probability displacement ellipsoids.

**Figure 2**

A dimeric unit formed by the O–H...N hydrogen bonds. Suffix A in atom labels indicates the symmetry operation $-x+1, -y+1, -z+1$.

(*E*)-2-[4-[(Pyridin-2-yl)methylideneamino]phenyl]acetic acid

Crystal data

$C_{14}H_{12}N_2O_2$
 $M_r = 240.26$
 Monoclinic, $P2_1/c$
 Hall symbol: $-P 2_1/c$
 $a = 4.1558 (1) \text{ \AA}$
 $b = 25.7790 (5) \text{ \AA}$
 $c = 11.2213 (2) \text{ \AA}$
 $\beta = 96.623 (1)^\circ$
 $V = 1194.14 (4) \text{ \AA}^3$
 $Z = 4$

$F(000) = 504$
 $D_x = 1.336 \text{ Mg m}^{-3}$
 Mo $K\alpha$ radiation, $\lambda = 0.71073 \text{ \AA}$
 Cell parameters from 6688 reflections
 $\theta = 2.4\text{--}27.7^\circ$
 $\mu = 0.09 \text{ mm}^{-1}$
 $T = 296 \text{ K}$
 Block, green
 $0.32 \times 0.28 \times 0.22 \text{ mm}$

Data collection

Bruker APEXII CCD
diffractometer

Radiation source: sealed tube

Graphite monochromator

φ and ω scans

Absorption correction: multi-scan
(*SADABS*; Sheldrick, 1996)

$T_{\min} = 0.971$, $T_{\max} = 0.980$

19023 measured reflections

2999 independent reflections

2113 reflections with $I > 2\sigma(I)$

$R_{\text{int}} = 0.048$

$\theta_{\max} = 28.4^\circ$, $\theta_{\min} = 1.6^\circ$

$h = -5 \rightarrow 5$

$k = -34 \rightarrow 34$

$l = -14 \rightarrow 14$

Refinement

Refinement on F^2

Least-squares matrix: full

$R[F^2 > 2\sigma(F^2)] = 0.042$

$wR(F^2) = 0.120$

$S = 1.05$

2999 reflections

167 parameters

0 restraints

Primary atom site location: structure-invariant
direct methods

Secondary atom site location: difference Fourier
map

Hydrogen site location: inferred from
neighbouring sites

H atoms treated by a mixture of independent
and constrained refinement

$w = 1/[\sigma^2(F_o^2) + (0.0594P)^2 + 0.0884P]$

where $P = (F_o^2 + 2F_c^2)/3$

$(\Delta/\sigma)_{\max} < 0.001$

$\Delta\rho_{\max} = 0.24 \text{ e } \text{\AA}^{-3}$

$\Delta\rho_{\min} = -0.19 \text{ e } \text{\AA}^{-3}$

Special details

Geometry. All e.s.d.'s (except the e.s.d. in the dihedral angle between two l.s. planes) are estimated using the full covariance matrix. The cell e.s.d.'s are taken into account individually in the estimation of e.s.d.'s in distances, angles and torsion angles; correlations between e.s.d.'s in cell parameters are only used when they are defined by crystal symmetry. An approximate (isotropic) treatment of cell e.s.d.'s is used for estimating e.s.d.'s involving l.s. planes.

Refinement. Refinement of F^2 against ALL reflections. The weighted R -factor wR and goodness of fit S are based on F^2 , conventional R -factors R are based on F , with F set to zero for negative F^2 . The threshold expression of $F^2 > \sigma(F^2)$ is used only for calculating R -factors(gt) *etc.* and is not relevant to the choice of reflections for refinement. R -factors based on F^2 are statistically about twice as large as those based on F , and R -factors based on ALL data will be even larger.

Fractional atomic coordinates and isotropic or equivalent isotropic displacement parameters (\AA^2)

| | x | y | z | $U_{\text{iso}}^*/U_{\text{eq}}$ |
|----|-------------|-------------|--------------|----------------------------------|
| O1 | 0.0141 (3) | 0.59412 (4) | 0.29429 (8) | 0.0559 (3) |
| O2 | -0.1260 (4) | 0.62479 (4) | 0.11244 (10) | 0.0854 (4) |
| N1 | 0.6832 (3) | 0.31705 (4) | 0.64271 (10) | 0.0498 (3) |
| N2 | 0.2167 (3) | 0.35524 (4) | 0.37215 (9) | 0.0468 (3) |
| C1 | 0.5054 (3) | 0.30923 (5) | 0.53680 (11) | 0.0433 (3) |
| C2 | 0.4438 (4) | 0.25998 (5) | 0.49147 (14) | 0.0582 (4) |
| H2 | 0.3247 | 0.2554 | 0.4168 | 0.070* |
| C3 | 0.5605 (4) | 0.21775 (6) | 0.55782 (16) | 0.0686 (5) |
| H3 | 0.5219 | 0.1843 | 0.5285 | 0.082* |
| C4 | 0.7336 (4) | 0.22551 (6) | 0.66725 (15) | 0.0671 (5) |
| H4 | 0.8104 | 0.1975 | 0.7146 | 0.081* |
| C5 | 0.7917 (4) | 0.27542 (6) | 0.70586 (13) | 0.0626 (4) |
| H5 | 0.9130 | 0.2806 | 0.7799 | 0.075* |
| C6 | 0.3776 (3) | 0.35647 (5) | 0.47493 (11) | 0.0439 (3) |
| H6 | 0.4165 | 0.3884 | 0.5126 | 0.053* |

| | | | | |
|------|-------------|-------------|--------------|------------|
| C7 | 0.0845 (3) | 0.40250 (4) | 0.32274 (11) | 0.0405 (3) |
| C8 | -0.0533 (3) | 0.43940 (5) | 0.39151 (11) | 0.0452 (3) |
| H8 | -0.0541 | 0.4341 | 0.4735 | 0.054* |
| C9 | -0.1887 (3) | 0.48373 (5) | 0.33884 (12) | 0.0457 (3) |
| H9 | -0.2835 | 0.5078 | 0.3858 | 0.055* |
| C10 | -0.1870 (3) | 0.49330 (4) | 0.21741 (11) | 0.0400 (3) |
| C11 | -0.0539 (3) | 0.45583 (5) | 0.14942 (11) | 0.0433 (3) |
| H11 | -0.0518 | 0.4612 | 0.0676 | 0.052* |
| C12 | 0.0758 (3) | 0.41058 (5) | 0.20048 (11) | 0.0449 (3) |
| H12 | 0.1575 | 0.3855 | 0.1526 | 0.054* |
| C13 | -0.3321 (3) | 0.54233 (5) | 0.16057 (13) | 0.0491 (3) |
| H13A | -0.3663 | 0.5372 | 0.0744 | 0.059* |
| H13B | -0.5432 | 0.5474 | 0.1877 | 0.059* |
| C14 | -0.1385 (3) | 0.59138 (5) | 0.18526 (12) | 0.0448 (3) |
| HO1 | 0.130 (5) | 0.6261 (9) | 0.3040 (17) | 0.097 (6)* |

Atomic displacement parameters (Å²)

| | U^{11} | U^{22} | U^{33} | U^{12} | U^{13} | U^{23} |
|-----|-------------|------------|-------------|-------------|-------------|-------------|
| O1 | 0.0796 (7) | 0.0436 (5) | 0.0408 (5) | -0.0069 (5) | -0.0092 (5) | 0.0010 (4) |
| O2 | 0.1241 (11) | 0.0643 (7) | 0.0594 (7) | -0.0192 (7) | -0.0258 (7) | 0.0201 (6) |
| N1 | 0.0604 (7) | 0.0424 (6) | 0.0431 (6) | 0.0003 (5) | -0.0083 (5) | 0.0016 (5) |
| N2 | 0.0582 (7) | 0.0396 (5) | 0.0403 (6) | -0.0062 (5) | -0.0044 (5) | 0.0031 (4) |
| C1 | 0.0491 (7) | 0.0402 (6) | 0.0393 (7) | -0.0050 (5) | -0.0005 (5) | 0.0026 (5) |
| C2 | 0.0734 (10) | 0.0433 (7) | 0.0538 (8) | -0.0101 (7) | -0.0099 (7) | -0.0004 (6) |
| C3 | 0.0904 (12) | 0.0375 (7) | 0.0746 (11) | -0.0061 (7) | -0.0038 (9) | 0.0005 (7) |
| C4 | 0.0863 (12) | 0.0442 (8) | 0.0675 (10) | 0.0086 (7) | -0.0052 (9) | 0.0131 (7) |
| C5 | 0.0787 (11) | 0.0537 (8) | 0.0504 (8) | 0.0069 (7) | -0.0145 (7) | 0.0065 (6) |
| C6 | 0.0516 (7) | 0.0380 (6) | 0.0403 (7) | -0.0073 (5) | -0.0021 (6) | 0.0010 (5) |
| C7 | 0.0477 (7) | 0.0348 (6) | 0.0370 (6) | -0.0092 (5) | -0.0043 (5) | 0.0006 (5) |
| C8 | 0.0561 (8) | 0.0460 (7) | 0.0329 (6) | -0.0099 (6) | 0.0021 (5) | -0.0003 (5) |
| C9 | 0.0499 (7) | 0.0447 (7) | 0.0426 (7) | -0.0035 (6) | 0.0048 (6) | -0.0069 (5) |
| C10 | 0.0373 (6) | 0.0386 (6) | 0.0420 (7) | -0.0052 (5) | -0.0044 (5) | -0.0010 (5) |
| C11 | 0.0525 (7) | 0.0438 (7) | 0.0322 (6) | -0.0034 (5) | -0.0006 (5) | 0.0014 (5) |
| C12 | 0.0569 (8) | 0.0392 (6) | 0.0378 (7) | -0.0013 (5) | 0.0011 (6) | -0.0032 (5) |
| C13 | 0.0442 (7) | 0.0492 (7) | 0.0505 (8) | 0.0048 (6) | -0.0090 (6) | -0.0010 (6) |
| C14 | 0.0495 (7) | 0.0413 (7) | 0.0420 (7) | 0.0104 (5) | -0.0021 (6) | 0.0019 (5) |

Geometric parameters (Å, °)

| | | | |
|--------|-------------|---------|-------------|
| O1—C14 | 1.3135 (15) | C6—H6 | 0.9300 |
| O1—HO1 | 0.95 (2) | C7—C12 | 1.3840 (17) |
| O2—C14 | 1.1925 (15) | C7—C8 | 1.3895 (18) |
| N1—C5 | 1.3353 (16) | C8—C9 | 1.3766 (17) |
| N1—C1 | 1.3404 (16) | C8—H8 | 0.9300 |
| N2—C6 | 1.2651 (15) | C9—C10 | 1.3856 (18) |
| N2—C7 | 1.4222 (15) | C9—H9 | 0.9300 |
| C1—C2 | 1.3806 (17) | C10—C11 | 1.3852 (18) |

| | | | |
|------------|-------------|---------------|-------------|
| C1—C6 | 1.4703 (16) | C10—C13 | 1.5097 (17) |
| C2—C3 | 1.375 (2) | C11—C12 | 1.3813 (17) |
| C2—H2 | 0.9300 | C11—H11 | 0.9300 |
| C3—C4 | 1.364 (2) | C12—H12 | 0.9300 |
| C3—H3 | 0.9300 | C13—C14 | 1.5070 (19) |
| C4—C5 | 1.370 (2) | C13—H13A | 0.9700 |
| C4—H4 | 0.9300 | C13—H13B | 0.9700 |
| C5—H5 | 0.9300 | | |
| C14—O1—HO1 | 109.6 (12) | C9—C8—C7 | 120.28 (11) |
| C5—N1—C1 | 117.88 (11) | C9—C8—H8 | 119.9 |
| C6—N2—C7 | 118.28 (10) | C7—C8—H8 | 119.9 |
| N1—C1—C2 | 121.65 (11) | C8—C9—C10 | 121.46 (12) |
| N1—C1—C6 | 115.24 (10) | C8—C9—H9 | 119.3 |
| C2—C1—C6 | 123.11 (11) | C10—C9—H9 | 119.3 |
| C3—C2—C1 | 119.33 (13) | C11—C10—C9 | 117.72 (11) |
| C3—C2—H2 | 120.3 | C11—C10—C13 | 121.11 (11) |
| C1—C2—H2 | 120.3 | C9—C10—C13 | 121.16 (12) |
| C4—C3—C2 | 119.17 (13) | C12—C11—C10 | 121.46 (11) |
| C4—C3—H3 | 120.4 | C12—C11—H11 | 119.3 |
| C2—C3—H3 | 120.4 | C10—C11—H11 | 119.3 |
| C3—C4—C5 | 118.54 (13) | C11—C12—C7 | 120.18 (12) |
| C3—C4—H4 | 120.7 | C11—C12—H12 | 119.9 |
| C5—C4—H4 | 120.7 | C7—C12—H12 | 119.9 |
| N1—C5—C4 | 123.39 (14) | C14—C13—C10 | 116.48 (10) |
| N1—C5—H5 | 118.3 | C14—C13—H13A | 108.2 |
| C4—C5—H5 | 118.3 | C10—C13—H13A | 108.2 |
| N2—C6—C1 | 122.27 (11) | C14—C13—H13B | 108.2 |
| N2—C6—H6 | 118.9 | C10—C13—H13B | 108.2 |
| C1—C6—H6 | 118.9 | H13A—C13—H13B | 107.3 |
| C12—C7—C8 | 118.82 (11) | O2—C14—O1 | 123.01 (13) |
| C12—C7—N2 | 118.70 (11) | O2—C14—C13 | 123.00 (12) |
| C8—C7—N2 | 122.37 (11) | O1—C14—C13 | 113.99 (11) |

Hydrogen-bond geometry (Å, °)

| <i>D</i> —H \cdots <i>A</i> | <i>D</i> —H | H \cdots <i>A</i> | <i>D</i> \cdots <i>A</i> | <i>D</i> —H \cdots <i>A</i> |
|---------------------------------|-------------|---------------------|----------------------------|-------------------------------|
| O1—HO1 \cdots N1 ⁱ | 0.95 (2) | 1.73 (2) | 2.6686 (15) | 165.9 (18) |

Symmetry code: (i) $-x+1, -y+1, -z+1$.