

Acta Crystallographica Section E

Structure Reports

Online

ISSN 1600-5368

Bis(4-fluorobenzyl- κ C)bis(3-methylsulfanyl-1,2,4-thiadiazole-5-thiolato- κ^2 N⁴,S⁵)tin(IV)

 Ai-Xia Deng,^{a*} Qian Xie,^a Mou-Yong Teng^a and Guo-Jia Fu^b

^aCollege of Materials Science and Engineering, Liaocheng University, Shandong 252059, People's Republic of China, and ^bCollege of Chemistry and Chemical Engineering, Liaocheng University, Shandong 252059, People's Republic of China
Correspondence e-mail: dengaixia@lcu.edu.cn

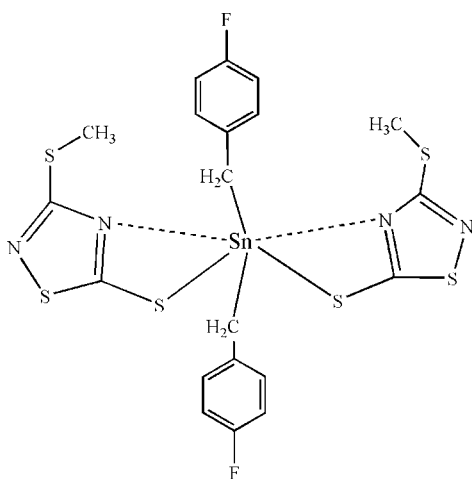
Received 2 November 2011; accepted 5 November 2011

Key indicators: single-crystal X-ray study; $T = 298$ K; mean $\sigma(\text{C}-\text{C}) = 0.005$ Å; R factor = 0.025; wR factor = 0.070; data-to-parameter ratio = 15.0.

The mononuclear title molecule, $[\text{Sn}(\text{C}_7\text{H}_6\text{F})_2(\text{C}_3\text{H}_3\text{N}_2\text{S}_3)_2]$, has 2 symmetry. The Sn^{IV} atom, located on a twofold rotation axis, is in a skew trapezoidal-bipyramidal geometry, with the basal plane defined by two S,N -chelating 3-methylsulfanyl-1,2,4-thiadiazole-5-thiolate ligands. The apical positions are occupied by the C atoms of two 4-fluorobenzyl groups.

Related literature

For related structures, see: Ma *et al.* (2005); Zhang *et al.* (2005); Zhang *et al.* (2009).



Experimental

Crystal data

$[\text{Sn}(\text{C}_7\text{H}_6\text{F})_2(\text{C}_3\text{H}_3\text{N}_2\text{S}_3)_2]$
 $M_r = 663.43$
 Monoclinic, $C2/c$
 $a = 13.9011$ (14) Å
 $b = 17.769$ (2) Å
 $c = 10.712$ (1) Å
 $\beta = 104.081$ (2)°

$V = 2566.4$ (5) Å³
 $Z = 4$
 Mo $K\alpha$ radiation
 $\mu = 1.52$ mm⁻¹
 $T = 298$ K
 $0.46 \times 0.32 \times 0.22$ mm

Data collection

Bruker SMART 1000 CCD area-detector diffractometer
 Absorption correction: multi-scan (*SADABS*; Bruker, 2001)
 $T_{\min} = 0.542$, $T_{\max} = 0.732$

6371 measured reflections
 2269 independent reflections
 2032 reflections with $I > 2\sigma(I)$
 $R_{\text{int}} = 0.025$

Refinement

$R[F^2 > 2\sigma(F^2)] = 0.025$
 $wR(F^2) = 0.070$
 $S = 1.15$
 2269 reflections

151 parameters
 H-atom parameters constrained
 $\Delta\rho_{\max} = 0.39$ e Å⁻³
 $\Delta\rho_{\min} = -0.55$ e Å⁻³

Table 1

Selected bond lengths (Å).

Sn1—C4	2.155 (3)	Sn1—N1	2.913 (3)
Sn1—S2	2.4703 (8)		

Data collection: *SMART* (Bruker, 2007); cell refinement: *SAINT* (Bruker, 2007); data reduction: *SAINT*; program(s) used to solve structure: *SHELXTL* (Sheldrick, 2008); program(s) used to refine structure: *SHELXTL*; molecular graphics: *SHELXTL*; software used to prepare material for publication: *SHELXTL*.

The authors thank the State Key Laboratory of Crystal Materials, Liaocheng University, China, and the School Science Foundation of Liaocheng University for financial support.

Supplementary data and figures for this paper are available from the IUCr electronic archives (Reference: XU5378).

References

- Bruker (2001). *SADABS*. Bruker AXS Inc., Madison, Wisconsin, USA.
 Bruker (2007). *SMART* and *SAINT*. Bruker AXS Inc., Madison, Wisconsin, USA.
 Ma, C.-L., Zhang, J.-H., Tian, G.-R. & Zhang, R.-F. (2005). *J. Organomet. Chem.* pp. 519–533.
 Sheldrick, G. M. (2008). *Acta Cryst.* **A64**, 112–122.
 Zhang, J.-H., Zhang, R.-F., Ma, C.-L. & Wang, D.-Q. (2005). *Acta Cryst.* **E61**, m2075–m2077.
 Zhang, J., Zhang, R., Ma, C., Wang, H. & Wang, D. (2009). *Acta Cryst.* **E65**, m1030.

supporting information

Acta Cryst. (2011). E67, m1735 [https://doi.org/10.1107/S1600536811046654]

Bis(4-fluorobenzyl- κ C)bis(3-methylsulfanyl-1,2,4-thiadiazole-5-thiolato- κ^2 N⁴,S⁵)tin(IV)

Ai-Xia Deng, Qian Xie, Mou-Yong Teng and Guo-Jia Fu

S1. Comment

In the title compound, from Fig.1, as far as the weak Sn—N interactions are concerned, the central Sn(IV) atom is situated in a skew-trapezoidal bipyramidal geometry, with the basal plane defined by two symmetrically chelating 3-methylmercapto-5-mercapto-1,2,4-thiadiazole ligands. The apical positions are occupied by two 4-fluorobenzyl groups. The coordination geometry of the Sn(IV) atom can also be described as distorted *trans* octahedral, with atoms N1, N1A, S2 and S2A occupying the equatorial positions, and atoms C4 and C4A occupying the axial positions. The molecular structure consists of a monomer with a hexa-coordinated Sn atom surrounded by two S atoms and two N atoms of the ligand, and two 4-fluorobenzyl groups.

The Sn—S bond distances and weak Sn—N bond lengths are 2.4703 (8)Å and 2.913 Å, respectively. The bite angles S2—Sn1—N1 and S2A—Sn1—N1A of title compound (59.12°) can be reconciled with a skew-trapezoidal bipyramidal geometry, although this geometry can also be considered as distorted *trans* octahedral. The structure of compound is close to those reported for a series of diorganotin(IV) 2-mercapto-4-methylpyrimidine derivatives (Ma *et al.*, 2005; Zhang *et al.*, 2005; Zhang *et al.* 2009). There is a good correspondence in their structure parameters: the Sn—S distances lie in the range 2.477–2.526Å and the Sn—N distances in the range 2.650–2.933 Å.

S2. Experimental

The 3-Methylmercapto-5-mercapto-1,2,4-thiadiazole (2 mmol) was added to the solution of ethanol 20 ml with sodium ethoxide (2 mmol), and the mixture was stirred for 30 minutes, then add Di(4-fluorobenzyl)dichlorotin(IV) (1 mmol) to the mixture, continuing the reaction for 12 h at 318k. After cooling down to room temperature, filtered it. The solvent of the filtrate was gradually removed by evaporation under vacuum until solid product was obtained. The solid was then recrystallized from ether-dichloromethane and colorless crystals suitable for X-ray diffraction were obtained (m.p. 410–412 K). Analysis, calculated for C₂₀H₁₈F₂N₄S₆Sn: C 36.21, H 2.73, N 8.44, F 5.73; found: C 36.17, H 2.70, N 8.50, F 5.76%.

S3. Refinement

All H atoms were placed geometrically and treated as riding on their parent atoms, with methylene C—H distances of 0.97 Å, methyl and thiadiazole C—H distances of 0.96 Å.

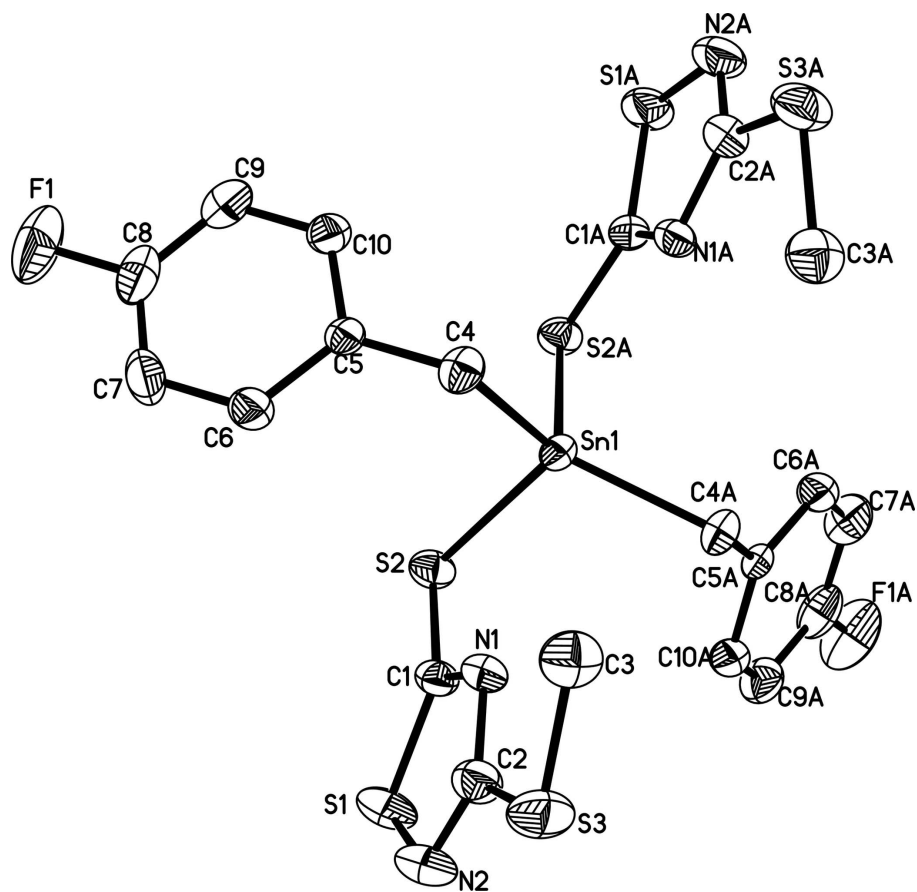


Figure 1

The molecular structure of the compound, showing 30% probability displacement ellipsoids.

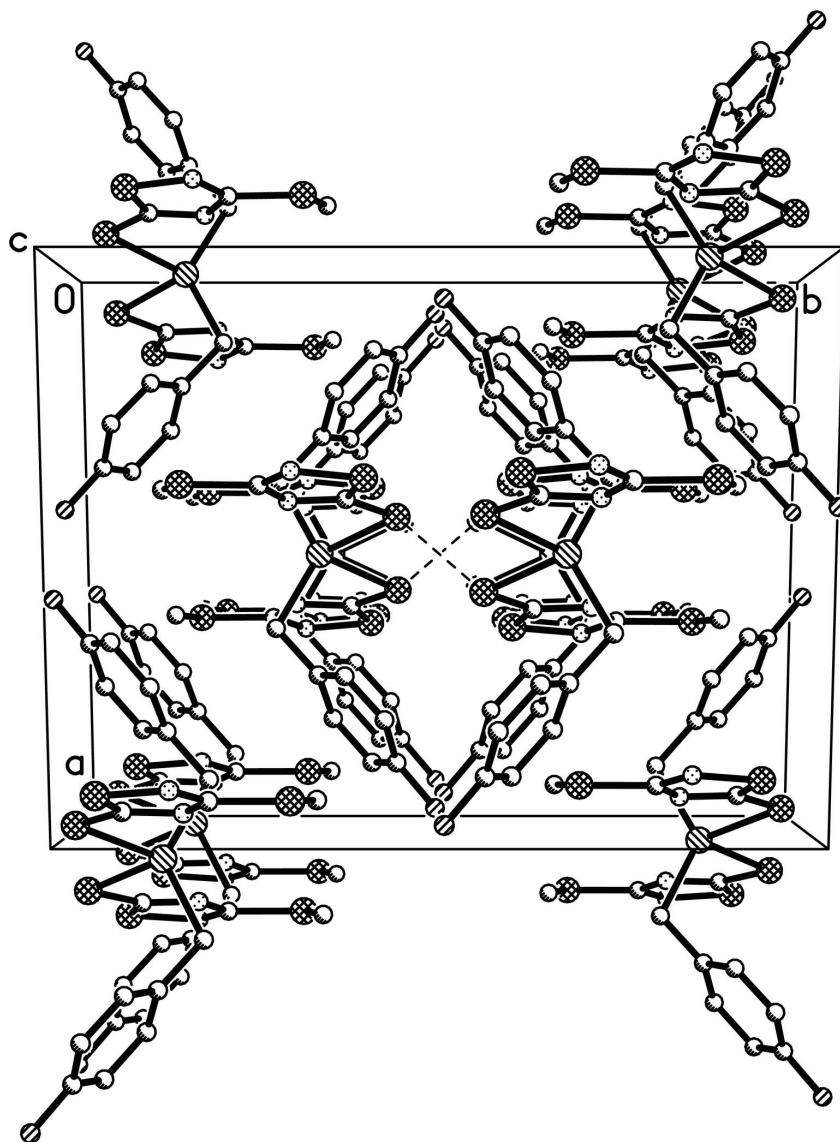


Figure 2

The unit cell of the title compound.

Bis(4-fluorobenzyl- κ C)bis(3-methylsulfanyl-1,2,4-thiadiazole-5-thiolato- κ^2 N⁴,S⁵)tin(IV)

Crystal data

[Sn(C₇H₆F)₂(C₃H₃N₂S₃)₂]

$M_r = 663.43$

Monoclinic, $C2/c$

Hall symbol: $-C 2yc$

$a = 13.9011(14) \text{ \AA}$

$b = 17.769(2) \text{ \AA}$

$c = 10.712(1) \text{ \AA}$

$\beta = 104.081(2)^\circ$

$V = 2566.4(5) \text{ \AA}^3$

$Z = 4$

$F(000) = 1320$

$D_x = 1.717 \text{ Mg m}^{-3}$

Mo $K\alpha$ radiation, $\lambda = 0.71073 \text{ \AA}$

Cell parameters from 4420 reflections

$\theta = 2.5\text{--}28.2^\circ$

$\mu = 1.52 \text{ mm}^{-1}$

$T = 298 \text{ K}$

Block, colourless

$0.46 \times 0.32 \times 0.22 \text{ mm}$

Data collection

Bruker SMART 1000 CCD area-detector
diffractometer
Radiation source: fine-focus sealed tube
Graphite monochromator
 φ and ω scans
Absorption correction: multi-scan
(*SADABS*; Bruker, 2001)
 $T_{\min} = 0.542$, $T_{\max} = 0.732$

6371 measured reflections
2269 independent reflections
2032 reflections with $I > 2\sigma(I)$
 $R_{\text{int}} = 0.025$
 $\theta_{\max} = 25.0^\circ$, $\theta_{\min} = 1.9^\circ$
 $h = -16 \rightarrow 16$
 $k = -21 \rightarrow 15$
 $l = -12 \rightarrow 12$

Refinement

Refinement on F^2
Least-squares matrix: full
 $R[F^2 > 2\sigma(F^2)] = 0.025$
 $wR(F^2) = 0.070$
 $S = 1.15$
2269 reflections
151 parameters
0 restraints
Primary atom site location: structure-invariant
direct methods

Secondary atom site location: difference Fourier
map
Hydrogen site location: inferred from
neighbouring sites
H-atom parameters constrained
 $w = 1/[\sigma^2(F_o^2) + (0.0343P)^2 + 2.4296P]$
where $P = (F_o^2 + 2F_c^2)/3$
 $(\Delta/\sigma)_{\max} = 0.002$
 $\Delta\rho_{\max} = 0.39 \text{ e } \text{\AA}^{-3}$
 $\Delta\rho_{\min} = -0.55 \text{ e } \text{\AA}^{-3}$

Special details

Geometry. All e.s.d.'s (except the e.s.d. in the dihedral angle between two l.s. planes) are estimated using the full covariance matrix. The cell e.s.d.'s are taken into account individually in the estimation of e.s.d.'s in distances, angles and torsion angles; correlations between e.s.d.'s in cell parameters are only used when they are defined by crystal symmetry. An approximate (isotropic) treatment of cell e.s.d.'s is used for estimating e.s.d.'s involving l.s. planes.

Refinement. Refinement of F^2 against ALL reflections. The weighted R -factor wR and goodness of fit S are based on F^2 , conventional R -factors R are based on F , with F set to zero for negative F^2 . The threshold expression of $F^2 > \sigma(F^2)$ is used only for calculating R -factors(gt) *etc.* and is not relevant to the choice of reflections for refinement. R -factors based on F^2 are statistically about twice as large as those based on F , and R -factors based on ALL data will be even larger.

Fractional atomic coordinates and isotropic or equivalent isotropic displacement parameters (\AA^2)

	<i>x</i>	<i>y</i>	<i>z</i>	$U_{\text{iso}}^*/U_{\text{eq}}$
Sn1	0.5000	0.655810 (14)	0.2500	0.03453 (11)
S1	0.62395 (8)	0.59377 (6)	-0.11579 (9)	0.0675 (3)
S2	0.56268 (6)	0.55499 (4)	0.13199 (7)	0.0467 (2)
S3	0.61389 (9)	0.82296 (6)	-0.08129 (10)	0.0711 (3)
F1	0.9231 (2)	0.50566 (15)	0.6055 (3)	0.1095 (10)
N1	0.58816 (19)	0.69118 (15)	0.0366 (2)	0.0437 (6)
N2	0.6347 (3)	0.6831 (2)	-0.1563 (3)	0.0681 (9)
C1	0.5912 (2)	0.61779 (18)	0.0233 (3)	0.0426 (7)
C2	0.6129 (3)	0.7252 (2)	-0.0662 (3)	0.0530 (8)
C3	0.6074 (3)	0.8515 (2)	0.0764 (4)	0.0667 (10)
H3A	0.5470	0.8332	0.0936	0.100*
H3B	0.6088	0.9055	0.0815	0.100*
H3C	0.6631	0.8313	0.1387	0.100*
C4	0.6259 (2)	0.71003 (17)	0.3750 (3)	0.0458 (7)
H4A	0.6534	0.7464	0.3259	0.055*
H4B	0.6041	0.7370	0.4420	0.055*

C5	0.7043 (2)	0.65510 (15)	0.4355 (3)	0.0360 (6)
C6	0.7802 (2)	0.6374 (2)	0.3788 (3)	0.0548 (8)
H6	0.7821	0.6599	0.3011	0.066*
C7	0.8538 (3)	0.5867 (3)	0.4351 (4)	0.0715 (12)
H7	0.9050	0.5751	0.3964	0.086*
C8	0.8491 (3)	0.5543 (2)	0.5482 (4)	0.0655 (10)
C9	0.7749 (3)	0.5691 (2)	0.6068 (4)	0.0612 (9)
H9	0.7729	0.5454	0.6836	0.073*
C10	0.7031 (2)	0.6196 (2)	0.5500 (3)	0.0494 (8)
H10	0.6522	0.6304	0.5897	0.059*

Atomic displacement parameters (Å²)

	U^{11}	U^{22}	U^{33}	U^{12}	U^{13}	U^{23}
Sn1	0.03463 (17)	0.03564 (17)	0.03042 (17)	0.000	0.00231 (11)	0.000
S1	0.0884 (7)	0.0725 (6)	0.0532 (5)	-0.0119 (5)	0.0395 (5)	-0.0207 (5)
S2	0.0602 (5)	0.0405 (4)	0.0424 (4)	-0.0011 (3)	0.0183 (4)	-0.0062 (3)
S3	0.0963 (8)	0.0655 (6)	0.0573 (6)	-0.0062 (5)	0.0300 (6)	0.0142 (5)
F1	0.0829 (18)	0.0850 (17)	0.133 (2)	0.0367 (14)	-0.0270 (16)	-0.0129 (17)
N1	0.0481 (15)	0.0487 (15)	0.0385 (14)	-0.0042 (12)	0.0190 (12)	-0.0013 (11)
N2	0.084 (2)	0.081 (2)	0.0493 (18)	-0.0115 (19)	0.0362 (17)	-0.0060 (16)
C1	0.0450 (17)	0.0514 (19)	0.0333 (16)	-0.0034 (14)	0.0133 (13)	-0.0074 (13)
C2	0.0525 (19)	0.062 (2)	0.0479 (19)	-0.0058 (16)	0.0188 (16)	0.0016 (16)
C3	0.084 (3)	0.051 (2)	0.067 (3)	-0.0025 (19)	0.021 (2)	0.0029 (17)
C4	0.0427 (17)	0.0433 (17)	0.0462 (18)	-0.0074 (13)	0.0006 (14)	-0.0081 (14)
C5	0.0308 (14)	0.0436 (16)	0.0310 (15)	-0.0080 (11)	0.0027 (11)	-0.0080 (12)
C6	0.0418 (18)	0.081 (2)	0.0431 (18)	-0.0046 (17)	0.0131 (15)	-0.0049 (17)
C7	0.041 (2)	0.097 (3)	0.075 (3)	0.0132 (19)	0.0120 (19)	-0.026 (2)
C8	0.051 (2)	0.056 (2)	0.076 (3)	0.0100 (17)	-0.0116 (19)	-0.0126 (19)
C9	0.059 (2)	0.066 (2)	0.050 (2)	-0.0059 (18)	-0.0021 (17)	0.0096 (17)
C10	0.0416 (17)	0.068 (2)	0.0384 (17)	-0.0042 (15)	0.0087 (14)	-0.0011 (15)

Geometric parameters (Å, °)

Sn1—C4	2.155 (3)	C3—H3B	0.9600
Sn1—C4 ⁱ	2.155 (3)	C3—H3C	0.9600
Sn1—S2 ⁱ	2.4703 (8)	C4—C5	1.489 (4)
Sn1—S2	2.4703 (8)	C4—H4A	0.9700
Sn1—N1	2.913 (3)	C4—H4B	0.9700
S1—N2	1.663 (4)	C5—C6	1.376 (4)
S1—C1	1.715 (3)	C5—C10	1.383 (4)
S2—C1	1.727 (3)	C6—C7	1.387 (5)
S3—C2	1.745 (4)	C6—H6	0.9300
S3—C3	1.786 (4)	C7—C8	1.356 (6)
F1—C8	1.370 (4)	C7—H7	0.9300
N1—C1	1.314 (4)	C8—C9	1.357 (6)
N1—C2	1.371 (4)	C9—C10	1.370 (5)
N2—C2	1.313 (4)	C9—H9	0.9300

C3—H3A	0.9600	C10—H10	0.9300
C4—Sn1—C4 ⁱ	126.88 (17)	C5—C4—H4A	109.2
C4—Sn1—S2 ⁱ	109.90 (9)	Sn1—C4—H4A	109.2
C4 ⁱ —Sn1—S2 ⁱ	107.95 (9)	C5—C4—H4B	109.2
C4—Sn1—S2	107.95 (9)	Sn1—C4—H4B	109.2
C4 ⁱ —Sn1—S2	109.90 (9)	H4A—C4—H4B	107.9
S2 ⁱ —Sn1—S2	87.03 (4)	C6—C5—C10	117.6 (3)
N2—S1—C1	92.81 (15)	C6—C5—C4	121.1 (3)
C1—S2—Sn1	92.51 (10)	C10—C5—C4	121.3 (3)
C2—S3—C3	101.08 (16)	C5—C6—C7	121.3 (3)
C1—N1—C2	109.2 (2)	C5—C6—H6	119.3
C2—N2—S1	107.4 (2)	C7—C6—H6	119.3
N1—C1—S1	111.3 (2)	C8—C7—C6	118.3 (3)
N1—C1—S2	123.4 (2)	C8—C7—H7	120.9
S1—C1—S2	125.31 (19)	C6—C7—H7	120.9
N2—C2—N1	119.2 (3)	C7—C8—C9	122.5 (3)
N2—C2—S3	119.3 (3)	C7—C8—F1	118.3 (4)
N1—C2—S3	121.5 (2)	C9—C8—F1	119.1 (4)
S3—C3—H3A	109.5	C8—C9—C10	118.4 (3)
S3—C3—H3B	109.5	C8—C9—H9	120.8
H3A—C3—H3B	109.5	C10—C9—H9	120.8
S3—C3—H3C	109.5	C9—C10—C5	121.9 (3)
H3A—C3—H3C	109.5	C9—C10—H10	119.1
H3B—C3—H3C	109.5	C5—C10—H10	119.1
C5—C4—Sn1	112.03 (19)		

Symmetry code: (i) $-x+1, y, -z+1/2$.