

Acta Crystallographica Section E

Structure Reports

Online

ISSN 1600-5368

Undecacarbonyl- μ_2 -methanethiolato- μ_2 -[(pyridin-2-yl)methanethiolato]- μ_4 -sulfido-tetrairon(II)(2 Fe—Fe)

 Yao-Cheng Shi,^{a*} Liang Lai,^a Wen-Bin Shen^b and Li-Min Yuan^c

^aCollege of Chemistry and Chemical Engineering, Yangzhou University, Yangzhou 225002, People's Republic of China, ^bAnalytical Center, China Pharmaceutical University, Nanjin 210009, People's Republic of China, and ^cTesting Center, Yangzhou University, Yangzhou 225009, People's Republic of China
Correspondence e-mail: ycshi@yzu.edu.cn

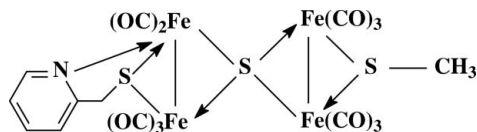
Received 30 October 2011; accepted 10 November 2011

Key indicators: single-crystal X-ray study; $T = 296$ K; mean $\sigma(\text{C}-\text{C}) = 0.008$ Å; R factor = 0.049; wR factor = 0.093; data-to-parameter ratio = 18.4.

The title compound, $[\text{Fe}_4(\text{C}_6\text{H}_6\text{NS})(\text{CH}_3\text{S})\text{S}(\text{CO})_{11}]$, comprises two butterfly-shaped sub-cluster cores, $\text{Fe}_2\text{S}_2\text{N}$ and Fe_2S_2 , joined together by a spiro-type μ_4 -S atom. The (pyridin-2-yl)methanethiolate ligand is attached to the $\text{Fe}_2(\text{CO})_5$ unit in a μ - $\kappa\text{N}:\kappa^2\text{S}$ mode, and the methanethiolate ligand is coordinated to the $\text{Fe}_2(\text{CO})_6$ unit in a μ - $\kappa^2\text{S}$ fashion.

Related literature

For general background to iron–carbonyl clusters, see: Capon *et al.* (2009); Tard & Pickett (2009); Gloaguen & Rauchfuss (2009); DuBois & DuBois (2009). For the syntheses of μ_4 -S atom-containing $\text{Fe}_2(\text{CO})_6$ butterfly-shaped complexes, see: Song (2005); Wang *et al.* (2000). For related structures, see: Song *et al.* (2000, 2002).



Experimental

Crystal data

$[\text{Fe}_4(\text{C}_6\text{H}_6\text{NS})(\text{CH}_3\text{S})\text{S}(\text{CO})_{11}]$ $V = 2623.9$ (3) Å³
 $M_r = 734.87$ $Z = 4$
 Monoclinic, $P2_1/n$ $\text{Mo K}\alpha$ radiation
 $a = 9.1253$ (3) Å $\mu = 2.46$ mm⁻¹
 $b = 28.9515$ (15) Å $T = 296$ K
 $c = 10.0376$ (11) Å $0.19 \times 0.16 \times 0.15$ mm
 $\beta = 98.3238$ (12)°

Data collection

Bruker SMART APEX CCD diffractometer 22650 measured reflections
 Absorption correction: multi-scan (SADABS; Sheldrick, 2004) 6151 independent reflections
 $T_{\min} = 0.628$, $T_{\max} = 0.684$ 4914 reflections with $I > 2\sigma(I)$
 $R_{\text{int}} = 0.032$

Refinement

$R[F^2 > 2\sigma(F^2)] = 0.049$ 335 parameters
 $wR(F^2) = 0.093$ H-atom parameters constrained
 $S = 1.19$ $\Delta\rho_{\text{max}} = 0.45$ e Å⁻³
 6151 reflections $\Delta\rho_{\text{min}} = -0.50$ e Å⁻³

Table 1

Selected bond lengths (Å).

Fe1—Fe2	2.5394 (9)	Fe3—Fe4	2.5473 (9)
Fe1—S1	2.2968 (14)	Fe3—S2	2.2485 (12)
Fe1—S2	2.2525 (11)	Fe3—S3	2.2801 (13)
Fe2—S1	2.2401 (13)	Fe4—S2	2.2428 (11)
Fe2—N1	2.022 (3)	Fe4—S3	2.2761 (13)
Fe2—S2	2.2148 (11)		

Data collection: *SMART* (Bruker, 2002); cell refinement: *SAINT-Plus* (Bruker, 2003); data reduction: *SAINT-Plus*; program(s) used to solve structure: *SIR2004* (Burla *et al.*, 2005); program(s) used to refine structure: *SHELXTL* (Sheldrick, 2008); molecular graphics: *PLATON* (Spek, 2009) and *WinGX* (Farrugia, 1999); software used to prepare material for publication: *publCIF* (Westrip, 2010).

The authors thank the Natural Science Foundation of China (grant No. 20572091) and the Natural Science Foundation of Jiangsu Province (grant No. 05KJB150151) for financial support of this work.

Supplementary data and figures for this paper are available from the IUCr electronic archives (Reference: TK5011).

References

- Bruker (2002). *SMART*. Bruker AXS Inc., Madison, Wisconsin, USA.
 Bruker (2003). *SAINT-Plus*. Bruker AXS Inc., Madison, Wisconsin, USA.
 Burla, M. C., Caliandro, R., Camalli, M., Carrozzini, B., Cascarano, G. L., De Caro, L., Giacovazzo, C., Polidori, G. & Spagna, R. (2005). *J. Appl. Cryst.* **38**, 381–388.
 Capon, J. F., Gloaguen, F., Pétillon, F. Y., Schollhammer, P. & Talarmin, J. (2009). *Coord. Chem. Rev.* **253**, 1476–1494.
 DuBois, M. R. & DuBois, D. L. (2009). *Chem. Soc. Rev.* **38**, 62–72.
 Farrugia, L. J. (1999). *J. Appl. Cryst.* **32**, 837–838.
 Gloaguen, F. & Rauchfuss, T. B. (2009). *Chem. Soc. Rev.* **38**, 100–108.
 Sheldrick, G. M. (2004). *SADABS*. University of Göttingen, Germany.
 Sheldrick, G. M. (2008). *Acta Cryst.* **A64**, 112–122.
 Song, L.-C. (2005). *Acc. Chem. Res.* **38**, 21–28.
 Song, L.-C., Fan, H.-T. & Hu, Q.-M. (2002). *J. Am. Chem. Soc.* **124**, 4566–4567.
 Song, L.-C., Hu, Q.-M., Fan, H.-T., Sun, B.-W., Tang, M.-Y., Chen, Y., Sun, Y., Sun, C.-X. & Wu, Q.-J. (2000). *Organometallics*, **19**, 3909–3915.
 Spek, A. L. (2009). *Acta Cryst.* **D65**, 148–155.
 Tard, C. & Pickett, C. J. (2009). *Chem. Rev.* **109**, 2245–2274.
 Wang, Z.-X., Zhao, H., Zhou, Z.-Y. & Zhou, X.-G. (2000). *J. Organomet. Chem.* **599**, 256–260.
 Westrip, S. P. (2010). *J. Appl. Cryst.* **43**, 920–925.

supporting information

Acta Cryst. (2011). E67, m1763 [https://doi.org/10.1107/S1600536811047751]

Undecacarbonyl- μ_2 -methanethiolato- μ_2 -[(pyridin-2-yl)methanethiolato]- μ_4 -sulfido-tetrairon(II)(2 Fe—Fe)

Yao-Cheng Shi, Liang Lai, Wen-Bin Shen and Li-Min Yuan

S1. Comment

Recently, Fe/S cluster complexes have attracted considerable attention, because of their interesting chemistry and particularly their close relevance to the modeling study of the active site of [Fe—Fe] hydrogenases. Moreover, until now, few efficient electrocatalysts have been obtained and the mechanism of the natural production/uptake of hydrogen remains unclear. Therefore, novel structural and chemical models are still necessary to gain a better understanding of the protonation mechanisms implied at the molecular level (Capon *et al.*, 2009; Tard & Pickett, 2009; Gloaguen & Rauchfuss, 2009; DuBois & DuBois, 2009). The reaction sequence 2-C₅H₄NCH₂SH/Fe₃(CO)₁₂/Et₃N/CS₂/MeI in THF leads to the formation of the title compound (Song, 2005; Wang *et al.*, 2000). Its molecular structure consists of the two butterfly sub-cluster cores Fe1Fe2S1N1S2 and Fe3Fe4S2S3 joined together to a spiro type of μ_4 -S atom, *i.e.*, S2 (Fig. 1 and Table 1). The ligand 2-C₅H₄NCH₂S⁻ is attached to Fe₂(CO)₅ unit in a μ -*kN:k²S* mode while the ligand CH₃S⁻ is coordinated to Fe₂(CO)₆ unit in a μ -*k²S* fashion. Interestingly, as seen from Table 1, the S3 atom is symmetrically coordinated to the Fe3—Fe4 bond while the S1 atom is asymmetrically to the Fe1—Fe2 bond. As in the related complex (μ -MeS)Fe₂(CO)₆(μ_4 -S)Fe₂(CO)₆(μ -SCSMe) (Song *et al.*, 2000, 2002), the CH₃ group is bonded to the S3 atom by an equatorial type of bond. The IR spectrum displays four absorption bands due to terminal carbonyl ligands. As expected, because of a chiral butterfly core, its ¹H NMR spectrum shows for the CH₂ group an AB quartet characteristic of nonequivalent hydrogen atoms. Also, its ¹³C NMR spectrum exhibits the corresponding absorption peaks which are in agreement with the aforementioned X-ray diffraction analysis.

S2. Experimental

A solution of Fe₃(CO)₁₂ (1.00 g, 2 mmol) and 2-pyridinemethanethiol (0.25 g, 2 mmol) in 15 mL of THF was stirred under inert atmosphere for 30 min. Then CS₂ (0.30 g, 4 mmol) was added and the solution stirred for 5 h. The solution was cooled to 0 °C and MeI (0.57 g, 4 mmol) added. After being stirred overnight at room temperature, the solvent was removed and the resulting residue was purified by chromatography on silica gel with petroleum ether as eluant to give the brown-red solid. Single crystals were grown from its dichloromethane-petroleum ether solution. IR (KBr): ν (C≡O) 2071 (*m*), 2030 (*vs*), 1997 (*s*), 1952 (*s*) cm⁻¹. ¹H NMR (500 MHz, CDCl₃, δ , p.p.m.): 8.71, 7.48-6.98 (*s*, 1H, *m*, 3H, C₅H₄N), 4.26, 3.93 (AB quartet, ²*J* = 15 Hz, 1H, 1H, CH₂), 2.10 (*s*, 3H, CH₃). ¹³C NMR (125 MHz, CDCl₃, δ , p.p.m.): 21.6 (CH₃), 43.4 (CH₂), 122.9, 136.1, 155.5, 166.1 (C₅H₄N), 207.9, 208.2, 210.8, 211.6, 213.4, 216.1 (C≡O).

S3. Refinement

The H atoms were geometrically placed (C—H = 0.93–0.97 Å) and refined as riding with $U_{iso}(H) = 1.2U_{eq}(C)$ and $U_{iso}(H) = 1.5U_{eq}(\text{methyl-C})$.

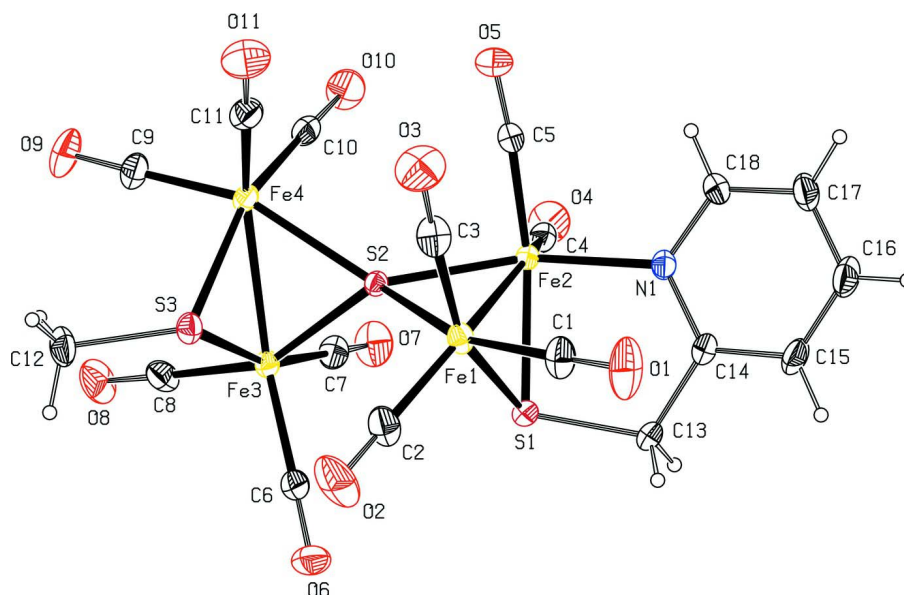


Figure 1

The molecule of the title compound, showing the atom-labelling scheme. Displacement ellipsoids are drawn at the 20% probability level.

Undecacarbonyl- μ_2 -methanethiolato- μ_2 -[(pyridin-2-yl)methanethiolato]- μ_4 -sulfido-tetrairon(II)(2 Fe—Fe)

Crystal data

$[\text{Fe}_4(\text{C}_6\text{H}_6\text{NS})(\text{CH}_3\text{S})\text{S}(\text{CO})_{11}]$

$M_r = 734.87$

Monoclinic, $P2_1/n$

Hall symbol: $-P\ 2_1n$

$a = 9.1253\ (3)\ \text{\AA}$

$b = 28.9515\ (15)\ \text{\AA}$

$c = 10.0376\ (11)\ \text{\AA}$

$\beta = 98.3238\ (12)^\circ$

$V = 2623.9\ (3)\ \text{\AA}^3$

$Z = 4$

$F(000) = 1456$

$D_x = 1.860\ \text{Mg m}^{-3}$

Mo $K\alpha$ radiation, $\lambda = 0.71073\ \text{\AA}$

Cell parameters from 4914 reflections

$\theta = 2.2\text{--}27.9^\circ$

$\mu = 2.46\ \text{mm}^{-1}$

$T = 296\ \text{K}$

Block, red

$0.19 \times 0.16 \times 0.15\ \text{mm}$

Data collection

Bruker SMART APEX CCD

diffractometer

Radiation source: fine-focus sealed tube

Graphite monochromator

ω and ϕ scans

Absorption correction: multi-scan

(*SADABS*; Sheldrick, 2004)

$T_{\min} = 0.628$, $T_{\max} = 0.684$

22650 measured reflections

6151 independent reflections

4914 reflections with $I > 2\sigma(I)$

$R_{\text{int}} = 0.032$

$\theta_{\max} = 27.8^\circ$, $\theta_{\min} = 2.2^\circ$

$h = -11 \rightarrow 11$

$k = -36 \rightarrow 37$

$l = -12 \rightarrow 13$

Refinement

Refinement on F^2

Least-squares matrix: full

$R[F^2 > 2\sigma(F^2)] = 0.049$

$wR(F^2) = 0.093$

$S = 1.19$

6151 reflections

335 parameters

0 restraints

Primary atom site location: structure-invariant

direct methods

Secondary atom site location: difference Fourier

map

Hydrogen site location: inferred from
neighbouring sites
H-atom parameters constrained

$$w = 1/[\sigma^2(F_o^2) + (0.P)^2 + 7.4281P]$$

where $P = (F_o^2 + 2F_c^2)/3$

$$(\Delta/\sigma)_{\max} < 0.001$$

$$\Delta\rho_{\max} = 0.45 \text{ e } \text{\AA}^{-3}$$

$$\Delta\rho_{\min} = -0.50 \text{ e } \text{\AA}^{-3}$$

Special details

Geometry. All e.s.d.'s (except the e.s.d. in the dihedral angle between two l.s. planes) are estimated using the full covariance matrix. The cell e.s.d.'s are taken into account individually in the estimation of e.s.d.'s in distances, angles and torsion angles; correlations between e.s.d.'s in cell parameters are only used when they are defined by crystal symmetry. An approximate (isotropic) treatment of cell e.s.d.'s is used for estimating e.s.d.'s involving l.s. planes.

Refinement. Refinement of F^2 against ALL reflections. The weighted R -factor wR and goodness of fit S are based on F^2 , conventional R -factors R are based on F , with F set to zero for negative F^2 . The threshold expression of $F^2 > \sigma(F^2)$ is used only for calculating R -factors(gt) *etc.* and is not relevant to the choice of reflections for refinement. R -factors based on F^2 are statistically about twice as large as those based on F , and R -factors based on ALL data will be even larger.

Fractional atomic coordinates and isotropic or equivalent isotropic displacement parameters (\AA^2)

	<i>x</i>	<i>y</i>	<i>z</i>	$U_{\text{iso}}^*/U_{\text{eq}}$
C1	0.3087 (6)	0.1314 (2)	-0.0125 (5)	0.0612 (15)
C2	0.1355 (7)	0.1881 (2)	0.1127 (5)	0.0654 (16)
C3	0.1362 (6)	0.0911 (2)	0.1218 (5)	0.0624 (15)
C4	0.6043 (5)	0.09347 (17)	0.4471 (5)	0.0459 (11)
C5	0.3874 (5)	0.04298 (17)	0.3159 (5)	0.0454 (11)
C6	0.2725 (5)	0.23874 (17)	0.4290 (5)	0.0473 (11)
C7	0.4244 (6)	0.17741 (18)	0.6064 (5)	0.0492 (12)
C8	0.1887 (6)	0.20957 (17)	0.6739 (5)	0.0522 (12)
C9	0.0277 (5)	0.1125 (2)	0.6643 (5)	0.0543 (13)
C10	0.2578 (6)	0.07232 (18)	0.5986 (5)	0.0492 (12)
C11	-0.0013 (6)	0.06344 (19)	0.4274 (6)	0.0553 (13)
C12	-0.1349 (6)	0.1994 (2)	0.5184 (6)	0.0664 (16)
H12A	-0.2317	0.1881	0.4837	0.100*
H12B	-0.1330	0.2324	0.5089	0.100*
H12C	-0.1116	0.1914	0.6119	0.100*
C13	0.6172 (6)	0.16550 (17)	0.1184 (6)	0.0591 (15)
H13A	0.5847	0.1828	0.0368	0.071*
H13B	0.7106	0.1785	0.1601	0.071*
C14	0.6407 (5)	0.11606 (17)	0.0822 (5)	0.0463 (11)
C15	0.7145 (6)	0.1058 (2)	-0.0263 (5)	0.0627 (15)
H15	0.7458	0.1294	-0.0782	0.075*
C16	0.7408 (6)	0.0605 (2)	-0.0560 (6)	0.0666 (16)
H16	0.7893	0.0530	-0.1284	0.080*
C17	0.6937 (6)	0.0267 (2)	0.0236 (6)	0.0659 (16)
H17	0.7109	-0.0043	0.0062	0.079*
C18	0.6214 (5)	0.03872 (17)	0.1287 (5)	0.0510 (12)
H18	0.5920	0.0153	0.1823	0.061*
Fe1	0.25779 (7)	0.13887 (2)	0.14905 (6)	0.04061 (16)
Fe2	0.46539 (6)	0.09889 (2)	0.30222 (6)	0.03290 (14)
Fe3	0.24023 (7)	0.18660 (2)	0.52126 (6)	0.03460 (15)

Fe4	0.11363 (7)	0.10806 (2)	0.51490 (6)	0.03607 (15)
N1	0.5907 (4)	0.08240 (13)	0.1587 (4)	0.0406 (9)
O1	0.3419 (5)	0.1255 (2)	-0.1178 (4)	0.1053 (19)
O2	0.0599 (6)	0.21896 (19)	0.0902 (5)	0.114 (2)
O3	0.0630 (6)	0.05878 (19)	0.1038 (5)	0.1026 (17)
O4	0.6892 (4)	0.08923 (15)	0.5427 (4)	0.0741 (12)
O5	0.3306 (5)	0.00851 (13)	0.3287 (5)	0.0763 (12)
O6	0.2891 (5)	0.27134 (13)	0.3701 (4)	0.0717 (12)
O7	0.5400 (4)	0.17148 (16)	0.6638 (4)	0.0743 (12)
O8	0.1601 (5)	0.22297 (15)	0.7736 (4)	0.0820 (13)
O9	-0.0211 (5)	0.11492 (18)	0.7626 (4)	0.0858 (14)
O10	0.3524 (5)	0.05028 (16)	0.6518 (4)	0.0795 (13)
O11	-0.0745 (5)	0.03477 (16)	0.3740 (5)	0.0909 (15)
S1	0.48087 (14)	0.17202 (4)	0.23270 (12)	0.0434 (3)
S2	0.26921 (11)	0.13019 (3)	0.37332 (9)	0.0301 (2)
S3	0.00216 (12)	0.17347 (4)	0.42431 (12)	0.0420 (3)

Atomic displacement parameters (Å²)

	U^{11}	U^{22}	U^{33}	U^{12}	U^{13}	U^{23}
C1	0.048 (3)	0.090 (4)	0.045 (3)	0.015 (3)	0.005 (2)	0.003 (3)
C2	0.072 (4)	0.078 (4)	0.046 (3)	0.029 (3)	0.011 (3)	0.010 (3)
C3	0.056 (3)	0.082 (4)	0.046 (3)	0.003 (3)	-0.002 (2)	-0.012 (3)
C4	0.038 (2)	0.048 (3)	0.054 (3)	0.002 (2)	0.014 (2)	0.006 (2)
C5	0.046 (3)	0.042 (3)	0.052 (3)	0.006 (2)	0.017 (2)	-0.002 (2)
C6	0.051 (3)	0.044 (3)	0.049 (3)	0.000 (2)	0.015 (2)	-0.005 (2)
C7	0.046 (3)	0.055 (3)	0.047 (3)	-0.008 (2)	0.009 (2)	-0.010 (2)
C8	0.066 (3)	0.043 (3)	0.047 (3)	0.009 (2)	0.007 (2)	-0.004 (2)
C9	0.043 (3)	0.071 (4)	0.051 (3)	0.004 (3)	0.016 (2)	0.008 (3)
C10	0.051 (3)	0.051 (3)	0.049 (3)	0.000 (2)	0.019 (2)	0.011 (2)
C11	0.049 (3)	0.057 (3)	0.060 (3)	-0.005 (3)	0.009 (2)	0.007 (3)
C12	0.046 (3)	0.077 (4)	0.082 (4)	0.021 (3)	0.026 (3)	0.002 (3)
C13	0.070 (4)	0.046 (3)	0.073 (4)	0.000 (3)	0.048 (3)	0.009 (3)
C14	0.041 (2)	0.052 (3)	0.050 (3)	-0.002 (2)	0.020 (2)	0.001 (2)
C15	0.068 (4)	0.072 (4)	0.057 (3)	-0.010 (3)	0.040 (3)	-0.002 (3)
C16	0.064 (4)	0.084 (4)	0.060 (3)	-0.011 (3)	0.035 (3)	-0.017 (3)
C17	0.060 (3)	0.061 (4)	0.084 (4)	0.002 (3)	0.035 (3)	-0.023 (3)
C18	0.050 (3)	0.045 (3)	0.062 (3)	0.012 (2)	0.020 (2)	0.002 (2)
Fe1	0.0455 (4)	0.0488 (4)	0.0281 (3)	0.0108 (3)	0.0070 (3)	0.0025 (3)
Fe2	0.0319 (3)	0.0332 (3)	0.0354 (3)	0.0025 (3)	0.0108 (2)	0.0028 (2)
Fe3	0.0368 (3)	0.0362 (3)	0.0321 (3)	0.0000 (3)	0.0092 (2)	-0.0026 (3)
Fe4	0.0322 (3)	0.0404 (4)	0.0369 (3)	-0.0024 (3)	0.0095 (2)	0.0050 (3)
N1	0.0370 (19)	0.044 (2)	0.043 (2)	0.0056 (17)	0.0139 (16)	0.0025 (17)
O1	0.092 (3)	0.195 (6)	0.031 (2)	0.030 (4)	0.017 (2)	-0.013 (3)
O2	0.141 (5)	0.116 (4)	0.082 (3)	0.084 (4)	0.005 (3)	0.023 (3)
O3	0.099 (4)	0.106 (4)	0.097 (4)	-0.039 (3)	-0.005 (3)	-0.024 (3)
O4	0.050 (2)	0.095 (3)	0.071 (3)	0.008 (2)	-0.015 (2)	0.015 (2)
O5	0.089 (3)	0.041 (2)	0.106 (3)	-0.012 (2)	0.038 (3)	-0.003 (2)

O6	0.100 (3)	0.048 (2)	0.072 (3)	-0.001 (2)	0.027 (2)	0.014 (2)
O7	0.043 (2)	0.100 (3)	0.074 (3)	-0.002 (2)	-0.0098 (19)	-0.012 (2)
O8	0.118 (4)	0.085 (3)	0.046 (2)	0.024 (3)	0.024 (2)	-0.017 (2)
O9	0.075 (3)	0.133 (4)	0.058 (2)	-0.004 (3)	0.038 (2)	0.008 (3)
O10	0.067 (3)	0.093 (3)	0.077 (3)	0.027 (2)	0.009 (2)	0.041 (2)
O11	0.086 (3)	0.078 (3)	0.103 (4)	-0.035 (3)	-0.005 (3)	-0.014 (3)
S1	0.0511 (7)	0.0349 (6)	0.0489 (7)	-0.0006 (5)	0.0225 (5)	0.0025 (5)
S2	0.0304 (5)	0.0326 (5)	0.0282 (5)	0.0010 (4)	0.0069 (4)	0.0013 (4)
S3	0.0349 (6)	0.0500 (7)	0.0420 (6)	0.0060 (5)	0.0083 (5)	0.0020 (5)

Geometric parameters (Å, °)

C1—O1	1.153 (6)	C13—C14	1.500 (7)
C1—Fe1	1.764 (5)	C13—S1	1.820 (5)
C2—O2	1.132 (6)	C13—H13A	0.9700
C2—Fe1	1.814 (6)	C13—H13B	0.9700
C3—O3	1.150 (7)	C14—N1	1.360 (6)
C3—Fe1	1.768 (6)	C14—C15	1.393 (6)
C4—O4	1.150 (6)	C15—C16	1.372 (8)
C4—Fe2	1.792 (5)	C15—H15	0.9300
C5—O5	1.140 (6)	C16—C17	1.372 (8)
C5—Fe2	1.781 (5)	C16—H16	0.9300
C6—O6	1.135 (6)	C17—C18	1.368 (7)
C6—Fe3	1.817 (5)	C17—H17	0.9300
C7—O7	1.140 (6)	C18—N1	1.339 (6)
C7—Fe3	1.791 (5)	C18—H18	0.9300
C8—O8	1.138 (6)	Fe1—Fe2	2.5394 (9)
C8—Fe3	1.795 (5)	Fe1—S1	2.2968 (14)
C9—O9	1.142 (6)	Fe1—S2	2.2525 (11)
C9—Fe4	1.794 (5)	Fe2—S1	2.2401 (13)
C10—O10	1.142 (6)	Fe2—N1	2.022 (3)
C10—Fe4	1.785 (5)	Fe2—S2	2.2148 (11)
C11—O11	1.148 (6)	Fe3—Fe4	2.5473 (9)
C11—Fe4	1.809 (6)	Fe3—S2	2.2485 (12)
C12—S3	1.834 (5)	Fe3—S3	2.2801 (13)
C12—H12A	0.9600	Fe4—S2	2.2428 (11)
C12—H12B	0.9600	Fe4—S3	2.2761 (13)
C12—H12C	0.9600		
O1—C1—Fe1	178.5 (6)	C4—Fe2—S2	106.51 (15)
O2—C2—Fe1	179.6 (7)	N1—Fe2—S2	153.28 (11)
O3—C3—Fe1	176.7 (6)	C5—Fe2—S1	157.93 (16)
O4—C4—Fe2	177.3 (5)	C4—Fe2—S1	105.45 (16)
O5—C5—Fe2	175.5 (4)	N1—Fe2—S1	86.20 (11)
O6—C6—Fe3	178.3 (5)	S2—Fe2—S1	78.70 (4)
O7—C7—Fe3	178.1 (5)	C5—Fe2—Fe1	100.93 (16)
O8—C8—Fe3	177.2 (5)	C4—Fe2—Fe1	155.39 (16)
O9—C9—Fe4	177.0 (5)	N1—Fe2—Fe1	97.22 (11)

O10—C10—Fe4	178.4 (5)	S2—Fe2—Fe1	56.06 (3)
O11—C11—Fe4	178.7 (5)	S1—Fe2—Fe1	57.03 (4)
S3—C12—H12A	109.5	C7—Fe3—C8	89.5 (2)
S3—C12—H12B	109.5	C7—Fe3—C6	99.0 (2)
H12A—C12—H12B	109.5	C8—Fe3—C6	102.1 (2)
S3—C12—H12C	109.5	C7—Fe3—S2	90.87 (16)
H12A—C12—H12C	109.5	C8—Fe3—S2	154.62 (17)
H12B—C12—H12C	109.5	C6—Fe3—S2	102.91 (15)
C14—C13—S1	112.8 (3)	C7—Fe3—S3	161.59 (17)
C14—C13—H13A	109.0	C8—Fe3—S3	94.30 (18)
S1—C13—H13A	109.0	C6—Fe3—S3	97.79 (16)
C14—C13—H13B	109.0	S2—Fe3—S3	78.05 (4)
S1—C13—H13B	109.0	C7—Fe3—Fe4	105.66 (17)
H13A—C13—H13B	107.8	C8—Fe3—Fe4	100.27 (17)
N1—C14—C15	121.9 (5)	C6—Fe3—Fe4	146.63 (16)
N1—C14—C13	118.4 (4)	S2—Fe3—Fe4	55.34 (3)
C15—C14—C13	119.7 (4)	S3—Fe3—Fe4	55.93 (4)
C16—C15—C14	119.6 (5)	C10—Fe4—C9	91.7 (2)
C16—C15—H15	120.2	C10—Fe4—C11	98.7 (2)
C14—C15—H15	120.2	C9—Fe4—C11	99.4 (2)
C15—C16—C17	118.4 (5)	C10—Fe4—S2	88.43 (15)
C15—C16—H16	120.8	C9—Fe4—S2	154.46 (19)
C17—C16—H16	120.8	C11—Fe4—S2	105.78 (17)
C18—C17—C16	119.5 (5)	C10—Fe4—S3	157.89 (17)
C18—C17—H17	120.2	C9—Fe4—S3	92.88 (18)
C16—C17—H17	120.2	C11—Fe4—S3	101.88 (17)
N1—C18—C17	123.7 (5)	S2—Fe4—S3	78.25 (4)
N1—C18—H18	118.2	C10—Fe4—Fe3	101.82 (17)
C17—C18—H18	118.2	C9—Fe4—Fe3	99.59 (18)
C1—Fe1—C3	90.3 (3)	C11—Fe4—Fe3	151.45 (17)
C1—Fe1—C2	98.5 (2)	S2—Fe4—Fe3	55.55 (3)
C3—Fe1—C2	103.2 (3)	S3—Fe4—Fe3	56.08 (4)
C1—Fe1—S2	157.68 (18)	C18—N1—C14	116.8 (4)
C3—Fe1—S2	90.26 (18)	C18—N1—Fe2	122.8 (3)
C2—Fe1—S2	103.12 (17)	C14—N1—Fe2	120.3 (3)
C1—Fe1—S1	92.86 (19)	C13—S1—Fe2	100.25 (17)
C3—Fe1—S1	152.38 (19)	C13—S1—Fe1	112.1 (2)
C2—Fe1—S1	103.4 (2)	Fe2—S1—Fe1	68.06 (4)
S2—Fe1—S1	76.76 (4)	Fe2—S2—Fe4	134.64 (5)
C1—Fe1—Fe2	103.19 (17)	Fe2—S2—Fe3	133.46 (5)
C3—Fe1—Fe2	97.69 (19)	Fe2—S2—Fe1	69.28 (4)
C2—Fe1—Fe2	149.67 (19)	Fe4—S2—Fe3	69.11 (4)
S2—Fe1—Fe2	54.66 (3)	Fe4—S2—Fe1	136.32 (5)
S1—Fe1—Fe2	54.91 (4)	Fe3—S2—Fe1	125.89 (5)
C5—Fe2—C4	95.8 (2)	C12—S3—Fe4	115.7 (2)
C5—Fe2—N1	96.52 (18)	C12—S3—Fe3	113.0 (2)
C4—Fe2—N1	98.67 (18)	Fe4—S3—Fe3	67.98 (4)
C5—Fe2—S2	89.81 (15)		