

Acta Crystallographica Section E

Structure Reports

Online

ISSN 1600-5368

1,3-Dibenzyl-1*H*-benzimidazol-2(3*H*)-oneYoussef Kandri Rodi,^a Fouad Ouazzani Chahdi,^{a*} El Mokhtar Essassi,^b Santiago V. Luis,^c Michael Bolte^d and Lahcen El Ammari^e

^aLaboratoire de Chimie Organique Appliquée, Université Sidi Mohamed Ben Abdallah, Faculté des Sciences et Techniques, Route d'immouzer, BP 2202 Fès, Morocco, ^bLaboratoire de Chimie Organique Hétérocyclique URAC21, Faculté des Sciences, Université Mohammed V-Agdal, Av. Ibn Battouta, BP 1014, Rabat, Morocco, ^cDepartamento de Química Inorgánica & Organica, ESTCE, Universitat Jaume I, E-12080 Castellon, Spain, ^dInstitut für Anorganische Chemie, J.W. Goethe-Universität Frankfurt, Max-von-Laue-Strasse 7, 60438 Frankfurt/Main, Germany, and ^eLaboratoire de Chimie du Solide Appliquée, Faculté des Sciences, Université Mohammed V-Agdal, Avenue Ibn Battouta, BP 1014, Rabat, Morocco
Correspondence e-mail: ouazzani_chahdi@yahoo.fr

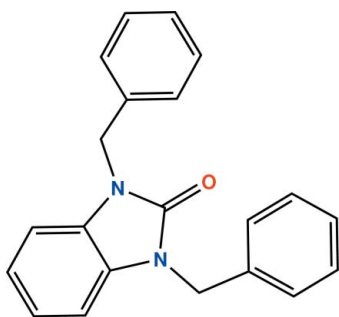
Received 19 October 2011; accepted 1 November 2011

Key indicators: single-crystal X-ray study; $T = 200$ K; mean $\sigma(\text{C}-\text{C}) = 0.002$ Å; R factor = 0.037; wR factor = 0.106; data-to-parameter ratio = 14.5.

In the molecular structure of the title compound, $\text{C}_{21}\text{H}_{18}\text{N}_2\text{O}$, the fused-ring system is essentially planar, the largest deviation from the mean plane being 0.0121 (9) Å. The O atom and adjacent C atom are located in Wyckoff position 4e on a twofold axis (0, y , 1/4). The two benzyl groups are almost perpendicular to the benzimidazole plane, but point in opposite directions. The dihedral angle between the benzimidazole mean plane and the phenyl ring is 81.95 (5)°, whereas that between the two benzyl groups is 60.96 (7)°.

Related literature

For pharmacological and biochemical properties of benzimidazoles, see: Gravatt *et al.* (1994); Horton *et al.* (2003); Kim *et al.* (1996); Roth *et al.* (1997). Ouzidan *et al.* (2011*a,b,c*).



Experimental

Crystal data

$\text{C}_{21}\text{H}_{18}\text{N}_2\text{O}$
 $M_r = 314.37$
 Monoclinic, $C2/c$
 $a = 19.5983$ (7) Å
 $b = 9.0882$ (2) Å
 $c = 10.0473$ (3) Å
 $\beta = 115.593$ (4)°
 $V = 1613.98$ (10) Å³
 $Z = 4$
 Cu $K\alpha$ radiation
 $\mu = 0.63$ mm⁻¹
 $T = 200$ K
 $0.37 \times 0.21 \times 0.15$ mm

Data collection

Agilent SuperNova Dual Cu at zero Atlas diffractometer (1995)
 $T_{\min} = 0.950$, $T_{\max} = 1.000$
 Absorption correction: multi-scan [CrysAlis PRO (Agilent, 2011), using spherical harmonics, implemented in SCALE3 ABSPACK scaling algorithm (Clark & Reid)]
 7837 measured reflections
 1611 independent reflections
 1397 reflections with $I > 2\sigma(I)$
 $R_{\text{int}} = 0.028$

Refinement

$R[F^2 > 2\sigma(F^2)] = 0.037$
 $wR(F^2) = 0.106$
 $S = 1.07$
 1611 reflections
 111 parameters
 H-atom parameters constrained
 $\Delta\rho_{\max} = 0.15$ e Å⁻³
 $\Delta\rho_{\min} = -0.16$ e Å⁻³

Data collection: CrysAlis PRO (Agilent, 2011); cell refinement: CrysAlis PRO; data reduction: CrysAlis PRO; program(s) used to solve structure: SHELXS97 (Sheldrick, 2008); program(s) used to refine structure: SHELXL97 (Sheldrick, 2008); molecular graphics: XP (Sheldrick, 2008); software used to prepare material for publication: SHELXL97.

Supplementary data and figures for this paper are available from the IUCr electronic archives (Reference: IM2334).

References

- Agilent (2011). CrysAlis PRO. Agilent Technologies, Yarnton, England.
 Clark, R. C. & Reid, J. S. (1995). *Acta Cryst.* **A51**, 887–897.
 Gravatt, G. L., Baguley, B. C., Wilson, W. R. & Denny, W. A. (1994). *J. Med. Chem.* **37**, 4338–4345.
 Horton, D. A., Bourne, G. T. & Smythe, M. L. (2003). *Chem. Rev.* **103**, 893–930.
 Kim, J. S., Gatto, B., Yu, C., Liu, A., Liu, L. F. & La Voie, E. J. (1996). *J. Med. Chem.* **39**, 992–998.
 Ouzidan, Y., Essassi, E. M., Luis, S. V., Bolte, M. & El Ammari, L. (2011c). *Acta Cryst.* **E67**, o1822.
 Ouzidan, Y., Kandri Rodi, Y., Butcher, R. J., Essassi, E. M. & El Ammari, L. (2011a). *Acta Cryst.* **E67**, o283.
 Ouzidan, Y., Kandri Rodi, Y., Fronczek, F. R., Venkatraman, R., El Ammari, L. & Essassi, E. M. (2011b). *Acta Cryst.* **E67**, o362–o363.
 Roth, T., Morningstar, M. L., Boyer, P. L., Hughes, S. H., Buckheit, R. W. & Michejda, C. J. (1997). *J. Med. Chem.* **40**, 4199–4207.
 Sheldrick, G. M. (2008). *Acta Cryst.* **A64**, 112–122.

supporting information

Acta Cryst. (2011). E67, o3234 [https://doi.org/10.1107/S1600536811046071]

1,3-Dibenzyl-1*H*-benzimidazol-2(3*H*)-one

Youssef Kandri Rodi, Fouad Ouazzani Chahdi, El Mokhtar Essassi, Santiago V. Luis, Michael Bolte and Lahcen El Ammari

S1. Comment

Benzimidazoles are very useful intermediates/subunits for the development of molecules of pharmaceutical or biological interest. Benzimidazole and its derivatives are an important class of bioactive molecules in the field of drugs and pharmaceuticals. Benzimidazole derivatives have found applications in diverse therapeutic areas including anti-ulcers, anti-hypertensives, anti-virals, anti-fungals, anti-cancers, (Gravatt *et al.* 1994; Horton *et al.* 2003; Kim *et al.* 1996; Roth *et al.* 1997).

As a continuation of our research work devoted to the development of substituted benzimidazol-2-one derivatives (Ouzidan *et al.*, 2011*a*, 2011*b*), we reported the synthesis of new benzimidazol-2-one derivative by action of benzyl chloride with 1*H*-benzimidazol-2(3*H*)-one in the presence of a catalytic quantity of tetra-*n*-butylammonium bromide under mild conditions to furnish two compounds: mono-substituted (Ouzidan *et al.*, 2011*c*) and the title compound (Scheme 1).

The title compound C₂₁H₁₈N₂O is a new heterocyclic system deriving from benzimidazole. The crystal structure of this molecule is built up from two fused six and five-membered rings linked to two benzyl groups. The oxygen and the adjacent carbon atom are located in the Wyckoff position 4 e on the twofold axis (0, *y*, 1/4). The fused-ring system is essentially planar, with the maximum deviation of 0.0121 (9) Å for N1 as shown in Fig.1. The benzyl groups are almost perpendicular to the benzimidazole plane but oriented in opposite directions, with a dihedral angle of 81.95 (7). The dihedral angle between the two benzyl rings is about 60.965 (7)°.

S2. Experimental

To a mixture of 1*H*-benzimidazol-2(3*H*)-one (0.2 g, 1.5 mmol), potassium carbonate (0.41 g, 3 mmol) and tetra-*n*-butylammonium bromide (0.05 g, 0.15 mmol) in DMF (15 ml) was added benzyl chloride (0.34 ml, 3 mmol). Stirring was continued at room temperature for 6 h. The salt was removed by filtration and the filtrate concentrated under reduced pressure. The residue was separated by chromatography on a column of silica gel with ethyl acetate/hexane (1/2) as eluent. The compound was recrystallized from ethanol to give colourless crystals (yield: 75%).

S3. Refinement

H atoms were located in a difference map and treated as riding with C—H = 0.93 Å for all H atoms with $U_{\text{iso}}(\text{H}) = 1.2 U_{\text{eq}}$ for aromatic and methylene.

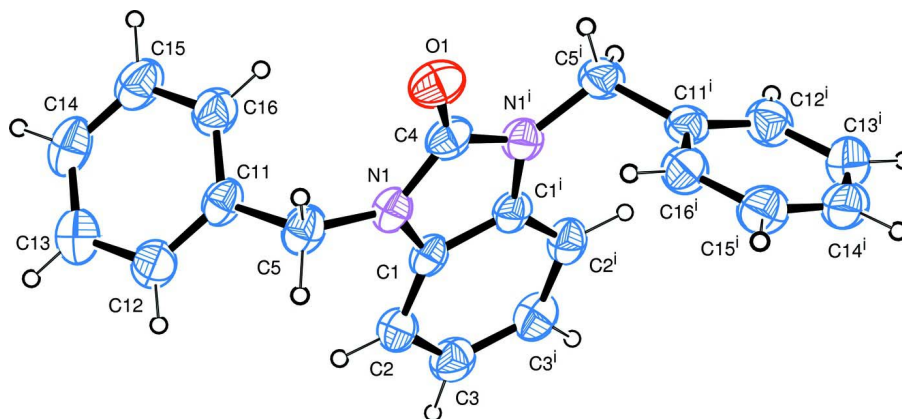


Figure 1

Molecular structure of the title compound with the atom-labelling scheme. Displacement ellipsoids are drawn at the 50% probability level. H atoms are represented as small circles.

1,3-Dibenzyl-1H-benzimidazol-2(3H)-one

Crystal data

$C_{21}H_{18}N_2O$
 $M_r = 314.37$
 Monoclinic, $C2/c$
 Hall symbol: $-C\ 2yc$
 $a = 19.5983\ (7)\ \text{\AA}$
 $b = 9.0882\ (2)\ \text{\AA}$
 $c = 10.0473\ (3)\ \text{\AA}$
 $\beta = 115.593\ (4)^\circ$
 $V = 1613.98\ (10)\ \text{\AA}^3$
 $Z = 4$

$F(000) = 664$
 $D_x = 1.294\ \text{Mg m}^{-3}$
 Cu $K\alpha$ radiation, $\lambda = 1.54184\ \text{\AA}$
 Cell parameters from 5000 reflections
 $\theta = 5\text{--}50^\circ$
 $\mu = 0.63\ \text{mm}^{-1}$
 $T = 200\ \text{K}$
 Block, colourless
 $0.37 \times 0.21 \times 0.15\ \text{mm}$

Data collection

Agilent SuperNova Dual Cu at zero Atlas diffractometer
 Radiation source: SuperNova (Cu) X-ray Source
 Mirror monochromator
 Detector resolution: $10.4051\ \text{pixels mm}^{-1}$
 ω scans

Absorption correction: multi-scan
 [*CrysAlis PRO* (Agilent, 2011), using spherical harmonics, implemented in *SCALE3* ABSPACK scaling algorithm (Clark & Reid (1995))]
 $T_{\min} = 0.950$, $T_{\max} = 1.000$
 7837 measured reflections
 1611 independent reflections
 1397 reflections with $I > 2\sigma(I)$
 $R_{\text{int}} = 0.028$
 $\theta_{\max} = 73.4^\circ$, $\theta_{\min} = 5.0^\circ$
 $h = -23 \rightarrow 18$
 $k = -11 \rightarrow 11$
 $l = -12 \rightarrow 12$

Refinement

Refinement on F^2
 Least-squares matrix: full
 $R[F^2 > 2\sigma(F^2)] = 0.037$
 $wR(F^2) = 0.106$
 $S = 1.07$
 1611 reflections

111 parameters
 0 restraints
 Primary atom site location: structure-invariant direct methods
 Secondary atom site location: difference Fourier map

Hydrogen site location: inferred from neighbouring sites
 H-atom parameters constrained
 $w = 1/[\sigma^2(F_o^2) + (0.0565P)^2 + 0.4305P]$
 where $P = (F_o^2 + 2F_c^2)/3$
 $(\Delta/\sigma)_{\max} = 0.001$

$\Delta\rho_{\max} = 0.15 \text{ e } \text{\AA}^{-3}$
 $\Delta\rho_{\min} = -0.16 \text{ e } \text{\AA}^{-3}$
 Extinction correction: *SHELXL97* (Sheldrick, 2008), $F_c^* = kFc[1 + 0.001x Fc^2 \lambda^3 / \sin(2\theta)]^{-1/4}$
 Extinction coefficient: 0.0010 (2)

Special details

Experimental. CrysAlisPro, Agilent Technologies, Version 1.171.35.11 (release 16-05-2011 CrysAlis171 .NET) Empirical absorption correction using spherical harmonics, implemented in SCALE3 ABSPACK scaling algorithm (Clark & Reid (1995)).

Geometry. All e.s.d.'s (except the e.s.d. in the dihedral angle between two l.s. planes) are estimated using the full covariance matrix. The cell e.s.d.'s are taken into account individually in the estimation of e.s.d.'s in distances, angles and torsion angles; correlations between e.s.d.'s in cell parameters are only used when they are defined by crystal symmetry. An approximate (isotropic) treatment of cell e.s.d.'s is used for estimating e.s.d.'s involving l.s. planes.

Refinement. Refinement of F^2 against all reflections. The weighted R -factor wR and goodness of fit S are based on F^2 , conventional R -factors R are based on F , with F set to zero for negative F^2 . The threshold expression of $F^2 > \sigma(F^2)$ is used only for calculating R -factors(gt) *etc.* and is not relevant to the choice of reflections for refinement. R -factors based on F^2 are statistically about twice as large as those based on F , and R -factors based on all data will be even larger.

Fractional atomic coordinates and isotropic or equivalent isotropic displacement parameters (\AA^2)

	<i>x</i>	<i>y</i>	<i>z</i>	$U_{\text{iso}}^*/U_{\text{eq}}$
O1	0.5000	0.58201 (13)	0.2500	0.0492 (4)
N1	0.53746 (5)	0.35600 (11)	0.19370 (10)	0.0366 (3)
C1	0.52407 (6)	0.20943 (12)	0.21516 (11)	0.0333 (3)
C2	0.54925 (7)	0.08014 (14)	0.17958 (13)	0.0390 (3)
H2	0.5835	0.0806	0.1346	0.047*
C3	0.52422 (7)	-0.05071 (14)	0.21593 (14)	0.0432 (3)
H3	0.5402	-0.1444	0.1907	0.052*
C4	0.5000	0.44731 (19)	0.2500	0.0378 (4)
C5	0.58741 (7)	0.40758 (14)	0.13068 (13)	0.0412 (3)
H5A	0.5785	0.5117	0.1088	0.049*
H5B	0.5751	0.3564	0.0384	0.049*
C11	0.67024 (7)	0.38418 (13)	0.23142 (12)	0.0376 (3)
C12	0.71696 (8)	0.30976 (15)	0.18389 (14)	0.0459 (3)
H12	0.6970	0.2694	0.0896	0.055*
C13	0.79366 (8)	0.29464 (16)	0.27566 (17)	0.0522 (4)
H13	0.8249	0.2450	0.2425	0.063*
C14	0.82333 (8)	0.35325 (17)	0.41560 (16)	0.0518 (4)
H14	0.8748	0.3445	0.4765	0.062*
C15	0.77703 (8)	0.42476 (16)	0.46569 (14)	0.0507 (4)
H15	0.7970	0.4626	0.5610	0.061*
C16	0.70099 (8)	0.44026 (15)	0.37424 (14)	0.0450 (3)
H16	0.6699	0.4888	0.4085	0.054*

Atomic displacement parameters (\AA^2)

	U^{11}	U^{22}	U^{33}	U^{12}	U^{13}	U^{23}
O1	0.0546 (8)	0.0361 (7)	0.0477 (7)	0.000	0.0136 (6)	0.000

N1	0.0302 (5)	0.0396 (6)	0.0357 (5)	-0.0023 (4)	0.0103 (4)	0.0015 (4)
C1	0.0233 (5)	0.0391 (6)	0.0293 (5)	-0.0018 (4)	0.0036 (4)	0.0003 (4)
C2	0.0295 (6)	0.0461 (7)	0.0374 (6)	0.0012 (5)	0.0107 (5)	-0.0031 (5)
C3	0.0371 (7)	0.0390 (6)	0.0469 (7)	0.0015 (5)	0.0120 (6)	-0.0036 (5)
C4	0.0329 (9)	0.0390 (9)	0.0311 (8)	0.000	0.0038 (7)	0.000
C5	0.0356 (7)	0.0493 (7)	0.0337 (6)	-0.0049 (5)	0.0101 (5)	0.0064 (5)
C11	0.0331 (6)	0.0406 (6)	0.0349 (6)	-0.0063 (5)	0.0106 (5)	0.0064 (5)
C12	0.0424 (7)	0.0531 (8)	0.0415 (6)	-0.0052 (6)	0.0174 (6)	0.0003 (6)
C13	0.0403 (8)	0.0581 (9)	0.0592 (8)	0.0011 (6)	0.0224 (7)	0.0053 (7)
C14	0.0336 (7)	0.0607 (9)	0.0511 (8)	-0.0050 (6)	0.0088 (6)	0.0129 (6)
C15	0.0412 (7)	0.0618 (9)	0.0377 (7)	-0.0089 (6)	0.0065 (6)	0.0011 (6)
C16	0.0393 (7)	0.0527 (7)	0.0397 (7)	-0.0028 (6)	0.0139 (6)	0.0000 (6)

Geometric parameters (Å, °)

O1—C4	1.224 (2)	C5—H5B	0.9700
N1—C4	1.3807 (14)	C11—C12	1.3790 (19)
N1—C1	1.3924 (15)	C11—C16	1.3910 (18)
N1—C5	1.4541 (15)	C12—C13	1.3896 (19)
C1—C2	1.3801 (17)	C12—H12	0.9300
C1—C1 ⁱ	1.397 (2)	C13—C14	1.376 (2)
C2—C3	1.3939 (18)	C13—H13	0.9300
C2—H2	0.9576	C14—C15	1.376 (2)
C3—C3 ⁱ	1.390 (3)	C14—H14	0.9300
C3—H3	0.9773	C15—C16	1.3790 (18)
C4—N1 ⁱ	1.3807 (14)	C15—H15	0.9300
C5—C11	1.5118 (17)	C16—H16	0.9300
C5—H5A	0.9700		
C4—N1—C1	110.02 (10)	H5A—C5—H5B	107.8
C4—N1—C5	124.18 (11)	C12—C11—C16	118.71 (12)
C1—N1—C5	125.68 (10)	C12—C11—C5	121.24 (11)
C2—C1—N1	131.45 (11)	C16—C11—C5	120.04 (12)
C2—C1—C1 ⁱ	121.63 (7)	C11—C12—C13	120.56 (12)
N1—C1—C1 ⁱ	106.92 (6)	C11—C12—H12	119.7
C1—C2—C3	116.92 (12)	C13—C12—H12	119.7
C1—C2—H2	121.4	C14—C13—C12	119.89 (14)
C3—C2—H2	121.7	C14—C13—H13	120.1
C3 ⁱ —C3—C2	121.44 (8)	C12—C13—H13	120.1
C3 ⁱ —C3—H3	119.4	C13—C14—C15	120.15 (13)
C2—C3—H3	119.1	C13—C14—H14	119.9
O1—C4—N1 ⁱ	126.94 (7)	C15—C14—H14	119.9
O1—C4—N1	126.94 (7)	C14—C15—C16	119.88 (13)
N1 ⁱ —C4—N1	106.12 (14)	C14—C15—H15	120.1
N1—C5—C11	113.16 (9)	C16—C15—H15	120.1
N1—C5—H5A	108.9	C15—C16—C11	120.78 (13)
C11—C5—H5A	108.9	C15—C16—H16	119.6

N1—C5—H5B	108.9	C11—C16—H16	119.6
C11—C5—H5B	108.9		

Symmetry code: (i) $-x+1, y, -z+1/2$.