

Acta Crystallographica Section E

Structure Reports

Online

ISSN 1600-5368

2-Imino-3-(2-nitrophenyl)-1,3-thiazolidin-4-one

Muhammad Zia-ur-Rehman,^{a*} Mark R. J. Elsegood,^b
Muhammad Nadeem Arshad^c and Abdullah M. Asiri^d

^aApplied Chemistry Research Centre, PCSIR Laboratories Complex, Lahore-54600, Pakistan, ^bChemistry Department, Loughborough University, Loughborough LE11 3TU, England, ^cX-ray Diffraction and Crystallography Laboratory, Department of Physics, School of Physical Sciences, University of the Punjab, Quaid-e-Azam Campus, Lahore-54590, Pakistan, and ^dThe Center of Excellence for Advanced Materials Research, King Abdul Aziz University, Jeddah, PO Box 80203, Saudi Arabia.

Correspondence e-mail: rehman_pcsir@hotmail.com

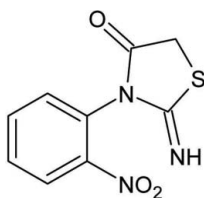
Received 3 August 2011; accepted 18 August 2011

Key indicators: single-crystal X-ray study; $T = 150$ K; mean $\sigma(\text{C}-\text{C}) = 0.002$ Å; R factor = 0.033; wR factor = 0.093; data-to-parameter ratio = 19.9.

In the title compound, $\text{C}_9\text{H}_7\text{N}_3\text{O}_3\text{S}$, the nitro and thiazolidinone moieties are inclined with respect to the aromatic ring at dihedral angles of 9.57 (16) and 78.42 (4)°, respectively. In the crystal, $\text{N}-\text{H}\cdots\text{O}$ hydrogen bonding connects the molecules along the c and a axes to form a two-dimensional polymeric network. A weak $\text{S}\cdots\text{O}$ interaction [3.2443 (11) Å] and phenyl ring to phenyl ring off-set $\pi\cdots\pi$ stacking [with centroid-centroid separation of 3.6890 (7) Å and ring slippage of 1.479 Å] link the polymeric chains along the b and a axes, respectively.

Related literature

For the biological activities of thiazolidinones, see: Barreca *et al.* (2001); Shah & Desai (2007); Mehta *et al.* (2006); Vazzana *et al.* (2004); Wrobel *et al.* (2006). For related structures, see: Shahwar *et al.* (2009, 2011); Zhou *et al.* (2008). For graph-set notation, see: Bernstein *et al.* (1995). For the comparative C—C separation in graphite, see: Trucano & Chen (1975).



Experimental

Crystal data

$\text{C}_9\text{H}_7\text{N}_3\text{O}_3\text{S}$
 $M_r = 237.24$
Monoclinic, $P2_1/n$

$a = 7.3036$ (5) Å
 $b = 16.4409$ (10) Å
 $c = 8.2455$ (5) Å

$\beta = 102.1321$ (9)°
 $V = 967.99$ (11) Å³
 $Z = 4$
Mo $K\alpha$ radiation

$\mu = 0.33$ mm⁻¹
 $T = 150$ K
 $0.70 \times 0.61 \times 0.40$ mm

Data collection

Bruker APEXII CCD diffractometer
Absorption correction: multi-scan (SADABS; Sheldrick, 2003)
 $T_{\min} = 0.802$, $T_{\max} = 0.880$

11000 measured reflections
2938 independent reflections
2675 reflections with $I > 2\sigma(I)$
 $R_{\text{int}} = 0.018$

Refinement

$R[F^2 > 2\sigma(F^2)] = 0.033$
 $wR(F^2) = 0.093$
 $S = 1.03$
2938 reflections
148 parameters

H atoms treated by a mixture of independent and constrained refinement
 $\Delta\rho_{\text{max}} = 0.47$ e Å⁻³
 $\Delta\rho_{\text{min}} = -0.25$ e Å⁻³

Table 1

Hydrogen-bond geometry (Å, °).

$D-\text{H}\cdots A$	$D-\text{H}$	$\text{H}\cdots A$	$D\cdots A$	$D-\text{H}\cdots A$
$\text{N1}-\text{H1}\cdots\text{O1}^i$	0.886 (18)	2.334 (18)	3.0337 (13)	135.9 (14)
$\text{N1}-\text{H1}\cdots\text{O2}^{ii}$	0.886 (18)	2.439 (17)	3.1416 (14)	136.5 (14)

Symmetry codes: (i) $x + 1, y, z$; (ii) $x + \frac{1}{2}, -y + \frac{3}{2}, z + \frac{1}{2}$.

Data collection: APEX2 (Bruker, 2007); cell refinement: SAINT (Bruker, 2007); data reduction: SAINT; program(s) used to solve structure: SHELXS97 (Sheldrick, 2008); program(s) used to refine structure: SHELXL97 (Sheldrick, 2008); molecular graphics: SHELXTL (Sheldrick, 2008); software used to prepare material for publication: SHELXTL and local programs.

The authors are grateful to the PCSIR Laboratories Complex, Lahore, and the Chemistry Department, Loughborough University, for the provision of chemicals and X-ray facilities.

Supplementary data and figures for this paper are available from the IUCr electronic archives (Reference: EZZ256).

References

- Barreca, M. L., Chimirri, A., Luca, L. D., Monforte, A. M., Monforte, P., Rao, A., Zappalà, M., Balzarini, J., Clercq, E. D., Pannecouque, C. & Witvrouw, M. (2001). *Bioorg. Med. Chem. Lett.* **11**, 1793–1796.
- Bernstein, J., Davis, R. E., Shimon, L. & Chang, N.-L. (1995). *Angew. Chem. Int. Ed. Engl.* **34**, 1555–1573.
- Bruker (2007). APEX2 and SAINT. Bruker AXS Inc., Madison, Wisconsin, USA.
- Mehta, P. D., Sengar, N. P., Subrahmanyam, E. V. S. & Satyanarayana, D. (2006). *Indian J. Pharm. Sci.* **68**, 103–106.
- Shah, T. J. & Desai, V. A. (2007). *Arkivoc*, **xiv**, 218–228.
- Shahwar, D., Tahir, M. N., Raza, M. A., Ahmad, N. & Aslam, S. (2011). *Acta Cryst.* **E67**, o133.
- Shahwar, D., Tahir, M. N., Raza, M. A. & Iqbal, B. (2009). *Acta Cryst.* **E65**, o2917.
- Sheldrick, G. M. (2003). SADABS. University of Göttingen, Germany.
- Sheldrick, G. M. (2008). *Acta Cryst.* **A64**, 112–122.
- Trucano, P. & Chen, R. (1975). *Nature (London)*, **258**, 136–137.
- Vazzana, I., Terranova, E., Mattioli, F. & Sparatore, F. (2004). *Arkivoc*, **v**, 364–374.
- Wrobel, J., Jetter, J., Kao, W., Rogers, J., Di, L., Chi, J., Peréz, M. C., Chen, G.-C. & Shen, E. S. (2006). *Bioorg. Med. Chem.* **14**, 5729–5741.
- Zhou, H., Wu, S., Zhai, S., Liu, A., Sun, Y., Li, R., Zhang, Y., Ekins, S., Swaan, P. W., Fang, B., Zhang, B. & Yan, B. (2008). *J. Med. Chem.* **51**, 1242–125.

supporting information

Acta Cryst. (2011). E67, o2564 [https://doi.org/10.1107/S1600536811033812]

2-Imino-3-(2-nitrophenyl)-1,3-thiazolidin-4-one

Muhammad Zia-ur-Rehman, Mark R. J. Elsegood, Muhammad Nadeem Arshad and Abdullah M. Asiri

S1. Comment

Thiazolidinones are well known heterocyclic compounds, familiar for their anti-bacterial (Shah & Desai, 2007), anti-fungal (Mehta *et al.*, 2006), anti-HIV (Barreca *et al.*, 2001), anti-inflammatory (Vazzana *et al.*, 2004), anti-cancer (Zhou *et al.*, 2008) and FSH receptor agonist (Wrobel *et al.*, 2006) activities. Herein, we report the synthesis and crystal structure of a new example of this class of compound, I (Fig. 1 & Scheme).

The structure of the title compound correlates with the crystal structures of other thiazolidinones (Shahwar, *et al.*, 2009 & Shahwar, *et al.*, 2011). The nitro group is inclined at a dihedral angle of $9.57(16)^\circ$ with respect to the phenyl ring. The thiazolidinone ring is essentially planar with an r.m.s. deviation of 0.0144 \AA with the maximum deviation at the carbon atoms ($C2 = 0.0196(6) \text{ \AA}$ & $C3 = -0.0193(7) \text{ \AA}$). The dihedral angle between the two planes $C4$ to $C9$ and $N1/C3/C2/S1/C1$ is $78.42(4)^\circ$. The amino group is involved in two unique $N-H\cdots O$ intermolecular hydrogen bonding interactions. The first results in zigzag $C(8)$ chains (Bernstein *et al.*, 1995) along the c axis; the second in $C(6)$ chains along the a axis (Table 1, Fig. 2). Weak $S\cdots O$ interactions link sheets together in the b direction with $S1\cdots O3 = 3.244 \text{ \AA}$ (Fig. 3). Off-set $\pi\cdots\pi$ stacking connects the chain along the a axis involving $C5/C6/C7$ with separations of *ca.* $3.41\text{--}3.53 \text{ \AA}$ (Figures 3 & 4). This is slightly longer than the *ca.* 3.35 \AA separation in graphite (Trucano & Chen, 1975).

S2. Experimental

A mixture of 1-isothiocyanato-2-nitrobenzene (8.0 mmoles), dichloromethane (20 ml), and anhydrous ammonium carbonate (8.0 mmoles) was stirred at room temperature under inert atmosphere (nitrogen) for 2 h. Paraformaldehyde (4 mmoles) was added to it portion wise, and the contents were allowed to stir for 10 h; cooled to 0°C , followed by addition of 0.5 M aqueous sodium hydroxide (20 ml) over 30 minutes. The cloudy solution was heated to reflux for 2 h and the reaction mixture was neutralized with dilute hydrochloric acid. The aqueous layer was extracted with ethyl acetate ($3 \times 30 \text{ ml}$); washed with water and brine and dried over sodium sulfate. Slow evaporation of the solvent furnished pale yellow crystals.

S3. Refinement

All the CH hydrogen atoms were located *via* a difference map and refined with a constrained, riding model with aromatic $\text{CH} = 0.95$ and $\text{CH}_2 = 0.99 \text{ \AA}$. The NH hydrogen has coordinates freely refined. $U_{\text{iso}}(\text{H})$ was set to $1.2U_{\text{eq}}$ of that of the carrier atom..

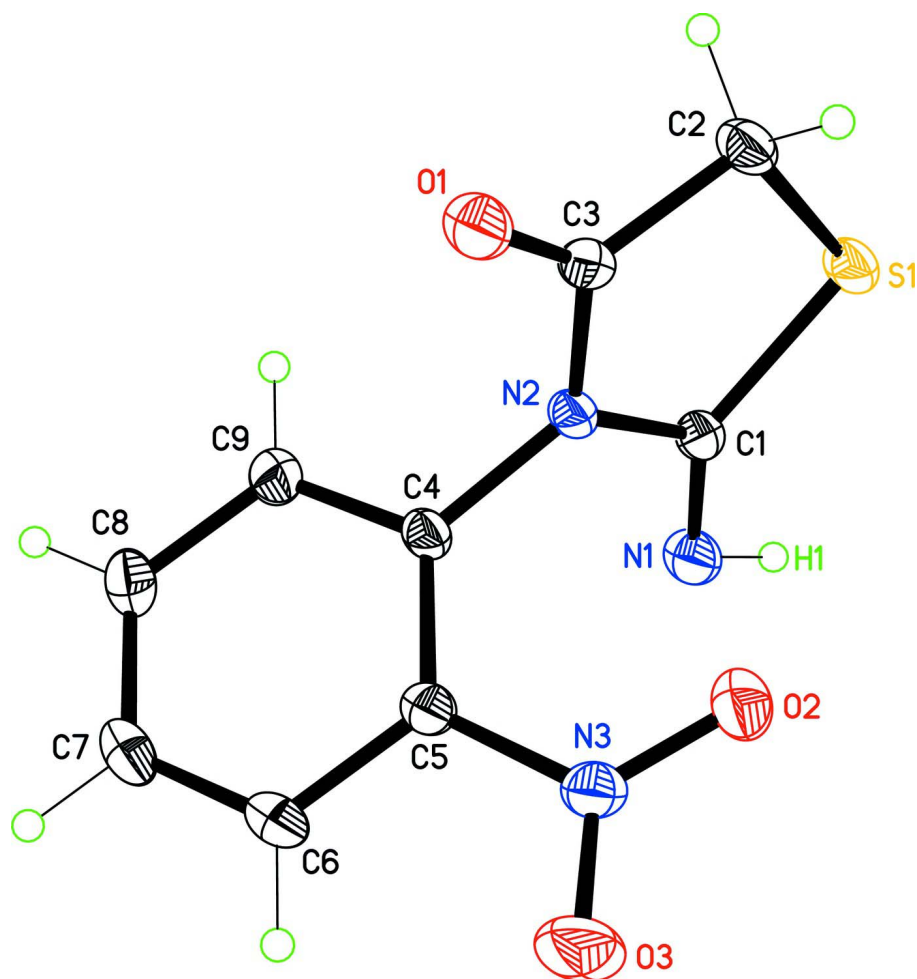
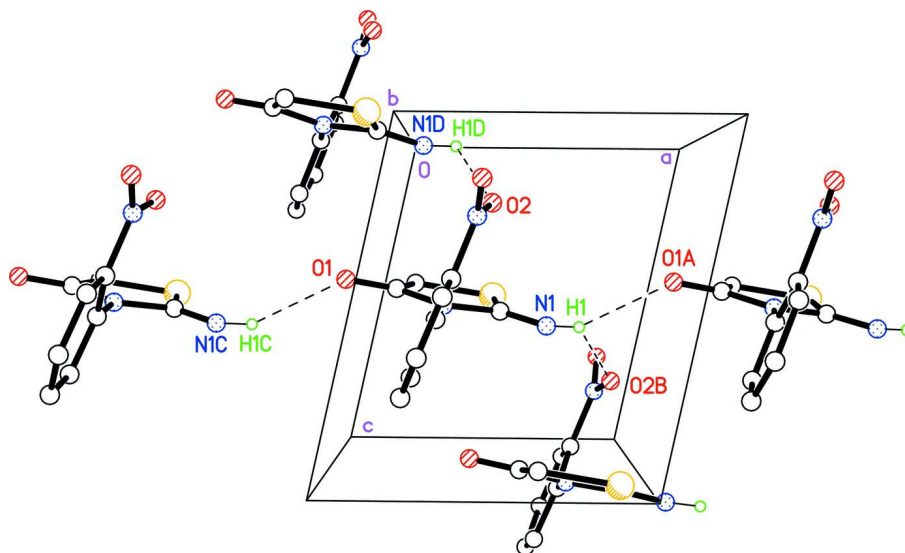
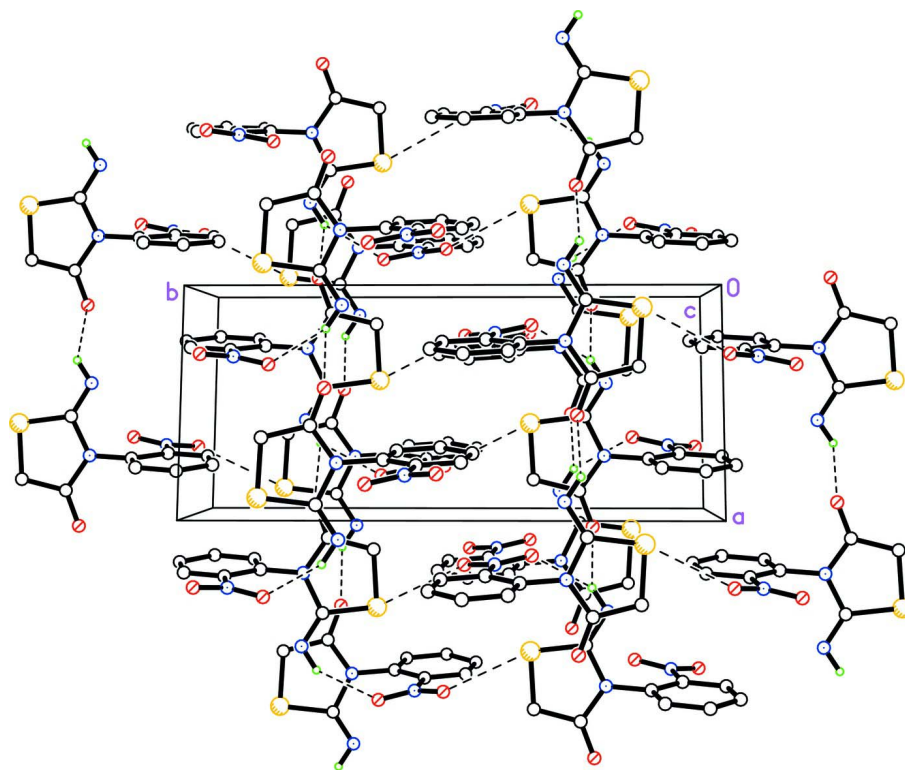


Figure 1

The labelled molecular structure of (I) showing 50% displacement ellipsoids.

**Figure 2**

Packing plot parallel to *b* which shows the polymeric network through N—H...O hydrogen bonds (drawn as dashed lines).

**Figure 3**

Packing plot viewed parallel to *c* showing N—H...O hydrogen bonds, weak S...O interactions (drawn as dashed lines) and stacked aromatic moieties.

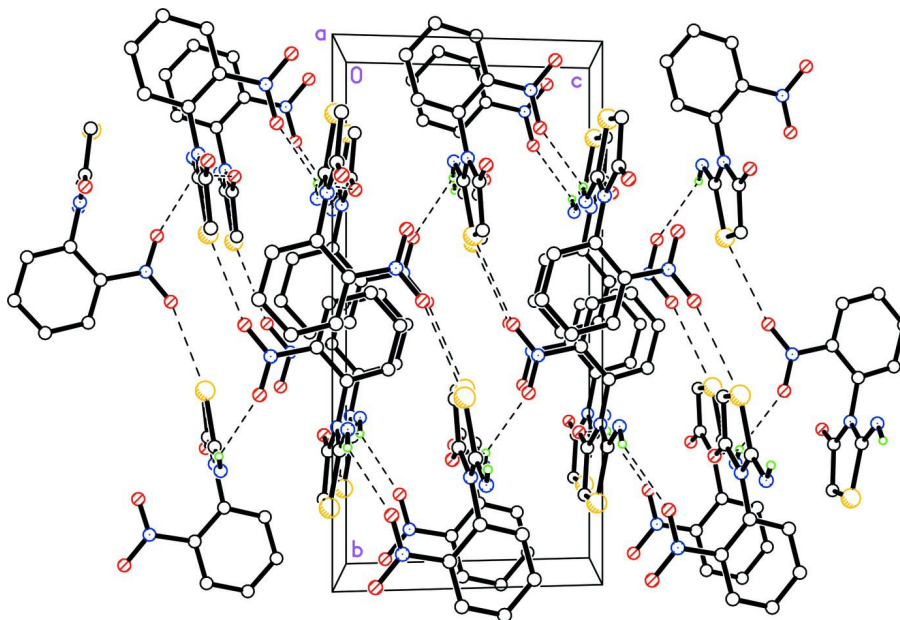


Figure 4

Packing plot viewed parallel to *a* showing N—H···O hydrogen bonds, weak S···O interactions (drawn as dashed lines) and stacked aromatic moieties

2-Imino-3-(2-nitrophenyl)-1,3-thiazolidin-4-one

Crystal data

$C_9H_7N_3O_3S$

$M_r = 237.24$

Monoclinic, $P2_1/n$

Hall symbol: $-P\ 2_1/n$

$a = 7.3036\ (5)\ \text{\AA}$

$b = 16.4409\ (10)\ \text{\AA}$

$c = 8.2455\ (5)\ \text{\AA}$

$\beta = 102.1321\ (9)^\circ$

$V = 967.99\ (11)\ \text{\AA}^3$

$Z = 4$

$F(000) = 488$

$D_x = 1.628\ \text{Mg m}^{-3}$

Mo $K\alpha$ radiation, $\lambda = 0.71073\ \text{\AA}$

Cell parameters from 6547 reflections

$\theta = 2.5\text{--}30.5^\circ$

$\mu = 0.33\ \text{mm}^{-1}$

$T = 150\ \text{K}$

Block, light yellow

$0.70 \times 0.61 \times 0.40\ \text{mm}$

Data collection

Bruker APEXII CCD
diffractometer

Radiation source: fine-focus sealed tube

Graphite monochromator

ω rotation with narrow frames scans

Absorption correction: multi-scan
(*SADABS*; Sheldrick, 2003)

$T_{\min} = 0.802$, $T_{\max} = 0.880$

11000 measured reflections

2938 independent reflections

2675 reflections with $I > 2\sigma(I)$

$R_{\text{int}} = 0.018$

$\theta_{\max} = 30.5^\circ$, $\theta_{\min} = 2.5^\circ$

$h = -10 \rightarrow 10$

$k = -23 \rightarrow 23$

$l = -11 \rightarrow 11$

Refinement

Refinement on F^2

Least-squares matrix: full

$R[F^2 > 2\sigma(F^2)] = 0.033$

$wR(F^2) = 0.093$

$S = 1.03$

2938 reflections

148 parameters

0 restraints

Primary atom site location: structure-invariant direct methods
 Secondary atom site location: structure-invariant direct methods
 Hydrogen site location: inferred from neighbouring sites

H atoms treated by a mixture of independent and constrained refinement

$$w = 1/[\sigma^2(F_o^2) + (0.0513P)^2 + 0.3974P]$$

$$\text{where } P = (F_o^2 + 2F_c^2)/3$$

$$(\Delta/\sigma)_{\max} = 0.001$$

$$\Delta\rho_{\max} = 0.47 \text{ e } \text{\AA}^{-3}$$

$$\Delta\rho_{\min} = -0.25 \text{ e } \text{\AA}^{-3}$$

Special details

Geometry. All e.s.d.'s (except the e.s.d. in the dihedral angle between two l.s. planes) are estimated using the full covariance matrix. The cell e.s.d.'s are taken into account individually in the estimation of e.s.d.'s in distances, angles and torsion angles; correlations between e.s.d.'s in cell parameters are only used when they are defined by crystal symmetry. An approximate (isotropic) treatment of cell e.s.d.'s is used for estimating e.s.d.'s involving l.s. planes.

Refinement. Refinement of F^2 against ALL reflections. The weighted R -factor wR and goodness of fit S are based on F^2 , conventional R -factors R are based on F , with F set to zero for negative F^2 . The threshold expression of $F^2 > \sigma(F^2)$ is used only for calculating R -factors(gt) etc. and is not relevant to the choice of reflections for refinement. R -factors based on F^2 are statistically about twice as large as those based on F , and R -factors based on ALL data will be even larger.

Fractional atomic coordinates and isotropic or equivalent isotropic displacement parameters (\AA^2)

	<i>x</i>	<i>y</i>	<i>z</i>	$U_{\text{iso}}^*/U_{\text{eq}}$
C1	0.43457 (15)	0.75201 (6)	0.52262 (14)	0.0182 (2)
N1	0.58325 (14)	0.79287 (6)	0.55992 (14)	0.0239 (2)
H1	0.686 (2)	0.7635 (10)	0.564 (2)	0.029*
S1	0.40353 (4)	0.646740 (16)	0.48418 (4)	0.02236 (9)
C2	0.15109 (16)	0.65317 (6)	0.44907 (16)	0.0213 (2)
H2A	0.0937	0.6319	0.3376	0.026*
H2B	0.1044	0.6207	0.5330	0.026*
C3	0.10139 (15)	0.74173 (6)	0.46228 (14)	0.0186 (2)
O1	-0.05729 (12)	0.76769 (5)	0.43725 (12)	0.02667 (19)
N2	0.25861 (12)	0.78966 (5)	0.50525 (12)	0.01726 (18)
C4	0.24651 (14)	0.87451 (6)	0.53960 (13)	0.01660 (19)
C5	0.26722 (14)	0.93712 (6)	0.42976 (13)	0.01709 (19)
C6	0.25532 (15)	1.01822 (7)	0.47384 (14)	0.0206 (2)
H6	0.2702	1.0601	0.3984	0.025*
C7	0.22162 (16)	1.03764 (7)	0.62847 (15)	0.0233 (2)
H7	0.2142	1.0930	0.6595	0.028*
C8	0.19873 (17)	0.97645 (7)	0.73760 (15)	0.0243 (2)
H8	0.1740	0.9899	0.8430	0.029*
C9	0.21179 (16)	0.89517 (7)	0.69338 (14)	0.0215 (2)
H9	0.1968	0.8535	0.7693	0.026*
N3	0.30099 (14)	0.92086 (6)	0.26329 (12)	0.02117 (19)
O2	0.33657 (15)	0.85158 (5)	0.22577 (12)	0.0294 (2)
O3	0.29218 (19)	0.97834 (6)	0.16775 (13)	0.0414 (3)

Atomic displacement parameters (\AA^2)

	U^{11}	U^{22}	U^{33}	U^{12}	U^{13}	U^{23}
C1	0.0191 (5)	0.0140 (4)	0.0231 (5)	0.0032 (4)	0.0083 (4)	0.0021 (4)
N1	0.0180 (4)	0.0189 (4)	0.0361 (5)	0.0019 (3)	0.0085 (4)	0.0007 (4)

S1	0.02110 (15)	0.01369 (14)	0.03376 (17)	0.00281 (9)	0.00911 (11)	-0.00049 (10)
C2	0.0203 (5)	0.0130 (4)	0.0310 (6)	0.0007 (4)	0.0060 (4)	-0.0002 (4)
C3	0.0191 (5)	0.0148 (4)	0.0231 (5)	-0.0007 (4)	0.0072 (4)	0.0011 (4)
O1	0.0182 (4)	0.0202 (4)	0.0424 (5)	0.0015 (3)	0.0081 (3)	-0.0003 (4)
N2	0.0164 (4)	0.0119 (4)	0.0249 (4)	0.0013 (3)	0.0074 (3)	0.0004 (3)
C4	0.0153 (4)	0.0125 (4)	0.0224 (5)	0.0018 (3)	0.0049 (4)	0.0003 (4)
C5	0.0167 (4)	0.0150 (4)	0.0194 (4)	-0.0005 (3)	0.0035 (3)	0.0003 (4)
C6	0.0212 (5)	0.0138 (5)	0.0256 (5)	-0.0011 (4)	0.0020 (4)	0.0009 (4)
C7	0.0233 (5)	0.0157 (5)	0.0294 (6)	0.0019 (4)	0.0023 (4)	-0.0047 (4)
C8	0.0274 (5)	0.0219 (5)	0.0245 (5)	0.0043 (4)	0.0073 (4)	-0.0043 (4)
C9	0.0249 (5)	0.0181 (5)	0.0232 (5)	0.0032 (4)	0.0091 (4)	0.0018 (4)
N3	0.0243 (5)	0.0192 (4)	0.0201 (4)	-0.0040 (3)	0.0049 (3)	0.0003 (3)
O2	0.0430 (5)	0.0220 (4)	0.0257 (4)	0.0011 (4)	0.0125 (4)	-0.0036 (3)
O3	0.0751 (8)	0.0249 (5)	0.0263 (5)	-0.0035 (5)	0.0156 (5)	0.0074 (4)

Geometric parameters (Å, °)

C1—N1	1.2589 (15)	C4—C5	1.4002 (14)
C1—N2	1.4064 (13)	C5—C6	1.3895 (14)
C1—S1	1.7655 (11)	C5—N3	1.4693 (14)
N1—H1	0.886 (18)	C6—C7	1.3857 (17)
S1—C2	1.8083 (12)	C6—H6	0.9500
C2—C3	1.5100 (14)	C7—C8	1.3831 (17)
C2—H2A	0.9900	C7—H7	0.9500
C2—H2B	0.9900	C8—C9	1.3938 (15)
C3—O1	1.2113 (14)	C8—H8	0.9500
C3—N2	1.3762 (14)	C9—H9	0.9500
N2—C4	1.4299 (13)	N3—O2	1.2225 (13)
C4—C9	1.3866 (15)	N3—O3	1.2234 (13)
N1—C1—N2	120.86 (10)	C5—C4—N2	124.72 (9)
N1—C1—S1	129.69 (9)	C6—C5—C4	121.00 (10)
N2—C1—S1	109.45 (8)	C6—C5—N3	116.81 (9)
C1—N1—H1	113.5 (11)	C4—C5—N3	122.19 (9)
C1—S1—C2	93.42 (5)	C7—C6—C5	119.65 (10)
C3—C2—S1	107.29 (7)	C7—C6—H6	120.2
C3—C2—H2A	110.3	C5—C6—H6	120.2
S1—C2—H2A	110.3	C8—C7—C6	120.02 (10)
C3—C2—H2B	110.3	C8—C7—H7	120.0
S1—C2—H2B	110.3	C6—C7—H7	120.0
H2A—C2—H2B	108.5	C7—C8—C9	120.19 (11)
O1—C3—N2	123.96 (10)	C7—C8—H8	119.9
O1—C3—C2	124.29 (10)	C9—C8—H8	119.9
N2—C3—C2	111.75 (9)	C4—C9—C8	120.65 (11)
C3—N2—C1	117.99 (9)	C4—C9—H9	119.7
C3—N2—C4	121.79 (9)	C8—C9—H9	119.7
C1—N2—C4	120.16 (9)	O2—N3—O3	122.83 (11)
C9—C4—C5	118.48 (10)	O2—N3—C5	119.50 (9)

C9—C4—N2	116.80 (9)	O3—N3—C5	117.68 (10)
N1—C1—S1—C2	178.92 (12)	C1—N2—C4—C5	80.50 (14)
N2—C1—S1—C2	-1.26 (9)	C9—C4—C5—C6	0.66 (16)
C1—S1—C2—C3	2.58 (9)	N2—C4—C5—C6	-179.31 (10)
S1—C2—C3—O1	176.24 (10)	C9—C4—C5—N3	-178.92 (10)
S1—C2—C3—N2	-3.36 (12)	N2—C4—C5—N3	1.11 (16)
O1—C3—N2—C1	-176.90 (11)	C4—C5—C6—C7	-0.29 (16)
C2—C3—N2—C1	2.70 (14)	N3—C5—C6—C7	179.30 (10)
O1—C3—N2—C4	6.11 (17)	C5—C6—C7—C8	-0.45 (17)
C2—C3—N2—C4	-174.29 (9)	C6—C7—C8—C9	0.81 (18)
N1—C1—N2—C3	179.21 (11)	C5—C4—C9—C8	-0.29 (17)
S1—C1—N2—C3	-0.64 (12)	N2—C4—C9—C8	179.68 (10)
N1—C1—N2—C4	-3.75 (16)	C7—C8—C9—C4	-0.44 (18)
S1—C1—N2—C4	176.40 (8)	C6—C5—N3—O2	170.66 (11)
C3—N2—C4—C9	77.45 (13)	C4—C5—N3—O2	-9.75 (16)
C1—N2—C4—C9	-99.47 (12)	C6—C5—N3—O3	-9.25 (16)
C3—N2—C4—C5	-102.57 (13)	C4—C5—N3—O3	170.35 (11)

Hydrogen-bond geometry (Å, °)

<i>D</i> —H \cdots <i>A</i>	<i>D</i> —H	H \cdots <i>A</i>	<i>D</i> \cdots <i>A</i>	<i>D</i> —H \cdots <i>A</i>
N1—H1 \cdots O1 ⁱ	0.886 (18)	2.334 (18)	3.0337 (13)	135.9 (14)
N1—H1 \cdots O2 ⁱⁱ	0.886 (18)	2.439 (17)	3.1416 (14)	136.5 (14)

Symmetry codes: (i) $x+1, y, z$; (ii) $x+1/2, -y+3/2, z+1/2$.