

Acta Crystallographica Section E

Structure Reports

Online

ISSN 1600-5368

2-Oxo-4-(thiophen-2-yl)-1,2,5,6-tetrahydrobenzo[*h*]quinoline-3-carbonitrile

Abdullah M. Asiri,^a Hassan M. Faidallah,^a
Abdulrahman O. Al-Youbi,^a Khalid A. Alamry^a and
Seik Weng Ng^{b,*}

^aChemistry Department, Faculty of Science, King Abdulaziz University, PO Box 80203 Jeddah, Saudi Arabia, and ^bDepartment of Chemistry, University of Malaya, 50603 Kuala Lumpur, Malaysia

Correspondence e-mail: seikweng@um.edu.my

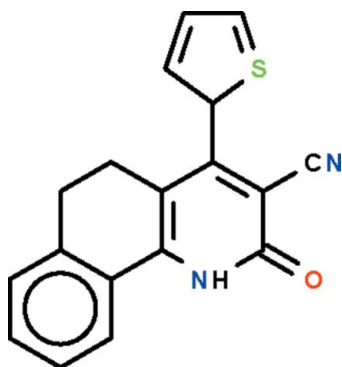
Received 7 August 2011; accepted 19 August 2011

Key indicators: single-crystal X-ray study; $T = 100$ K; mean $\sigma(\text{C}-\text{C}) = 0.002$ Å; disorder in main residue; R factor = 0.035; wR factor = 0.098; data-to-parameter ratio = 12.7.

In the molecule of the title compound, $\text{C}_{18}\text{H}_{12}\text{N}_2\text{OS}$, the tetrahydrobenzo[*h*]quinoline fused-ring system is buckled owing to the ethylene $-\text{CH}_2\text{CH}_2-$ fragment, the benzene ring and the pyridine ring being twisted by $16.0(1)^\circ$. The 4-substituted aromatic ring is bent away from the pyridine ring by $59.5(2)^\circ$ (for the major disordered thieryl component) in order to avoid crowding the cyanide substituent. In the crystal, two molecules are linked by a pair of $\text{N}-\text{H}\cdots\text{O}$ hydrogen bonds to form a centrosymmetric dimer. The thieryl ring is disordered over two sites in a $72.7(2):27.3$ ratio.

Related literature

For background to the anticancer properties of this class of compounds, see: Rostom *et al.* (2011).



Experimental

Crystal data

$\text{C}_{18}\text{H}_{12}\text{N}_2\text{OS}$
 $M_r = 304.36$
Triclinic, $P\bar{1}$
 $a = 6.9952(3)$ Å
 $b = 9.1809(4)$ Å
 $c = 11.1837(5)$ Å
 $\alpha = 93.990(4)^\circ$
 $\beta = 95.293(4)^\circ$
 $\gamma = 100.903(4)^\circ$
 $V = 699.48(5)$ Å³
 $Z = 2$
Cu $K\alpha$ radiation
 $\mu = 2.07$ mm⁻¹
 $T = 100$ K
 $0.30 \times 0.25 \times 0.20$ mm

Data collection

Agilent SuperNova Dual diffractometer with Atlas detector
Absorption correction: multi-scan (*CrysAlis PRO*; Agilent, 2010)
 $T_{\min} = 0.575$, $T_{\max} = 0.682$
5795 measured reflections
2740 independent reflections
2600 reflections with $I > 2\sigma(I)$
 $R_{\text{int}} = 0.020$

Refinement

$R[F^2 > 2\sigma(F^2)] = 0.035$
 $wR(F^2) = 0.098$
 $S = 1.07$
2740 reflections
216 parameters
19 restraints
H atoms treated by a mixture of independent and constrained refinement
 $\Delta\rho_{\text{max}} = 0.22$ e Å⁻³
 $\Delta\rho_{\text{min}} = -0.45$ e Å⁻³

Table 1

Hydrogen-bond geometry (Å, °).

$D-H\cdots A$	$D-H$	$H\cdots A$	$D\cdots A$	$D-H\cdots A$
$\text{N1}-\text{H1}\cdots\text{O1}^i$	0.89 (1)	1.97 (1)	2.851 (1)	173 (2)

Symmetry code: (i) $-x + 1, -y + 1, -z + 1$.

Data collection: *CrysAlis PRO* (Agilent, 2010); cell refinement: *CrysAlis PRO*; data reduction: *CrysAlis PRO*; program(s) used to solve structure: *SHELXS97* (Sheldrick, 2008); program(s) used to refine structure: *SHELXL97* (Sheldrick, 2008); molecular graphics: *X-SEED* (Barbour, 2001); software used to prepare material for publication: *publCIF* (Westrip, 2010).

The authors thank King Abdulaziz University and the University of Malaya for supporting this study.

Supplementary data and figures for this paper are available from the IUCr electronic archives (Reference: XU5294).

References

- Agilent (2010). *CrysAlis PRO*. Agilent Technologies, Yarnton, Oxfordshire, England.
Barbour, L. J. (2001). *J. Supramol. Chem.* **1**, 189–191.
Rostom, S. A. F., Faidallah, H. M. & Al-Saadi, M. S. (2011). *Med. Chem. Res.* **20** (DOI: 10.1007/s00044-010-9469-0).
Sheldrick, G. M. (2008). *Acta Cryst.* **A64**, 112–122.
Westrip, S. P. (2010). *J. Appl. Cryst.* **43**, 920–925.

supporting information

Acta Cryst. (2011). E67, o2472 [doi:10.1107/S1600536811033915]

2-Oxo-4-(thiophen-2-yl)-1,2,5,6-tetrahydrobenzo[*h*]quinoline-3-carbonitrile

Abdullah M. Asiri, Hassan M. Faidallah, Abdulrahman O. Al-Youbi, Khalid A. Alamry and Seik Weng Ng

S1. Comment

The compound (Scheme I) belongs to a series of cyano-pyridinones that have been evaluated for their anticancer properties (Rostom *et al.*, 2011). The tetrahydrobenzo[*h*]quinoline fused-ring system is buckled owing to the ethylene – CH₂CH₂– fragment, the benzene ring and the pyridine ring being twisted by 16.0 (1)°. The 4-substituted aromatic ring is bent away from the pyridine ring by 59.5 (2)° in order to avoid crowding the cyanide substituent (Fig. 1). Two molecules are linked by an N—H···O hydrogen bonds to form a centrosymmetric dimer (Table 1).

S2. Experimental

A mixture of thiophene-2-carbaldehyde (1.10 g, 10 mmol), 1-tetralone (1.46 g, 10 mmol), ethyl cyanoacetate (1.1 g, 10 mmol) and ammonium acetate (6.2 g, 80 mmol) in absolute ethanol (50 ml) was refluxed for 6 h. The reaction mixture was allowed to cool, and the yellow precipitate that formed was filtered, washed with water, dried and recrystallized from ethanol; m.p. 622–623 K.

S3. Refinement

Carbon- and nitrogen-bound H atoms were placed in calculated positions [C—H 0.95 to 0.99 $U_{\text{iso}}(\text{H}) = 1.2U_{\text{eq}}(\text{C})$] and were included in the refinement in the riding model approximation.

The amino H atom was located in a difference Fourier map and was refined with an N—H 0.88 (1) Å restraint.

The thienyl ring is disordered over two positions in a 72.7 (2):27.3 ratio. The temperature factors of the primed atoms were set to those of the unprimed ones; the atom that is connected to the fused-ring is ordered. The anisotropic temperature factors of the disordered atoms were tightly restrained to be nearly isotropic.

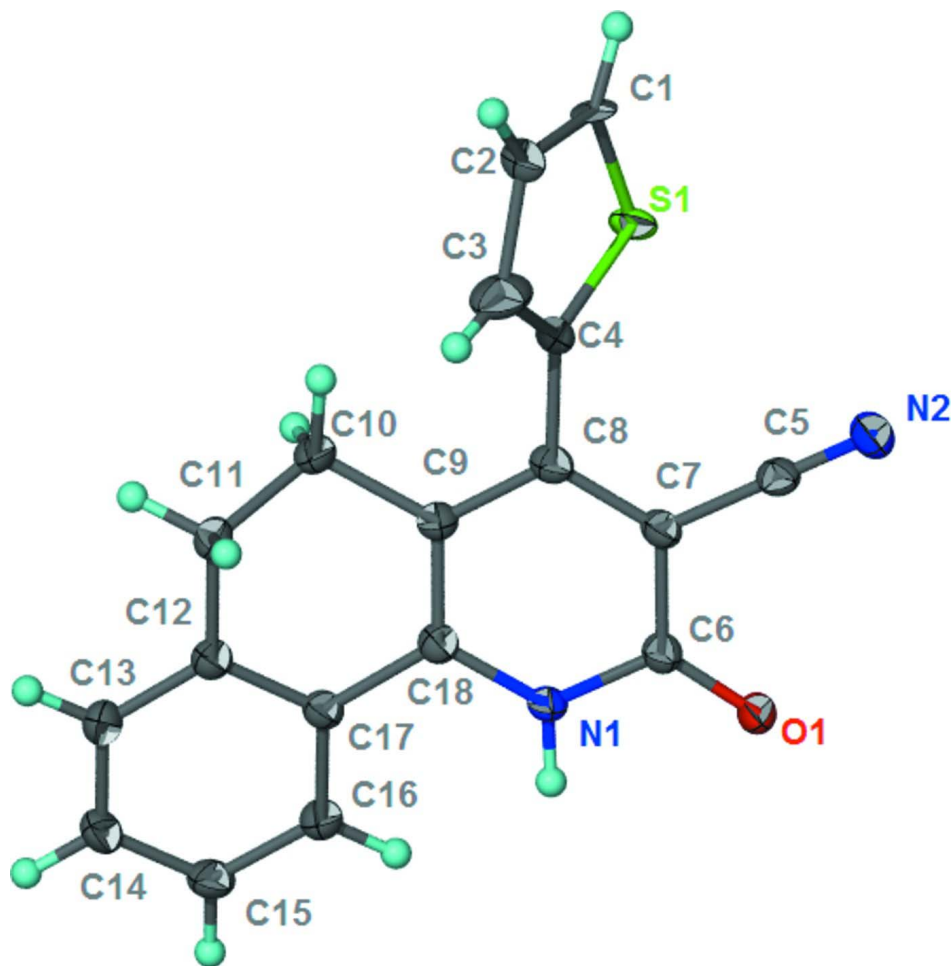


Figure 1

Thermal ellipsoid plot (Barbour, 2001) of $C_{18}H_{12}N_2OS$ at the 70% probability level; hydrogen atoms are drawn as spheres of arbitrary radius. The disorder in the thienyl ring is not shown.

2-Oxo-4-(thiophen-2-yl)-1,2,5,6-tetrahydrobenzo[h]quinoline-3-carbonitrile

Crystal data

$C_{18}H_{12}N_2OS$

$M_r = 304.36$

Triclinic, $P\bar{1}$

Hall symbol: $-P\ 1$

$a = 6.9952(3)\ \text{\AA}$

$b = 9.1809(4)\ \text{\AA}$

$c = 11.1837(5)\ \text{\AA}$

$\alpha = 93.990(4)^\circ$

$\beta = 95.293(4)^\circ$

$\gamma = 100.903(4)^\circ$

$V = 699.48(5)\ \text{\AA}^3$

$Z = 2$

$F(000) = 316$

$D_x = 1.445\ \text{Mg m}^{-3}$

Cu $K\alpha$ radiation, $\lambda = 1.54184\ \text{\AA}$

Cell parameters from 4426 reflections

$\theta = 4.0\text{--}74.1^\circ$

$\mu = 2.07\ \text{mm}^{-1}$

$T = 100\ \text{K}$

Prism, yellow

$0.30 \times 0.25 \times 0.20\ \text{mm}$

Data collection

Agilent SuperNova Dual
 diffractometer with Atlas detector
 Radiation source: SuperNova (Cu) X-ray
 Source
 Mirror monochromator
 Detector resolution: 10.4041 pixels mm⁻¹
 ω scans
 Absorption correction: multi-scan
 (CrysAlis PRO; Agilent, 2010)

$T_{\min} = 0.575$, $T_{\max} = 0.682$
 5795 measured reflections
 2740 independent reflections
 2600 reflections with $I > 2\sigma(I)$
 $R_{\text{int}} = 0.020$
 $\theta_{\max} = 74.3^\circ$, $\theta_{\min} = 4.0^\circ$
 $h = -7 \rightarrow 8$
 $k = -11 \rightarrow 10$
 $l = -13 \rightarrow 13$

Refinement

Refinement on F^2
 Least-squares matrix: full
 $R[F^2 > 2\sigma(F^2)] = 0.035$
 $wR(F^2) = 0.098$
 $S = 1.07$
 2740 reflections
 216 parameters
 19 restraints
 Primary atom site location: structure-invariant
 direct methods

Secondary atom site location: difference Fourier
 map
 Hydrogen site location: inferred from
 neighbouring sites
 H atoms treated by a mixture of independent
 and constrained refinement
 $w = 1/[\sigma^2(F_o^2) + (0.0555P)^2 + 0.2491P]$
 where $P = (F_o^2 + 2F_c^2)/3$
 $(\Delta/\sigma)_{\max} = 0.001$
 $\Delta\rho_{\max} = 0.22 \text{ e } \text{\AA}^{-3}$
 $\Delta\rho_{\min} = -0.45 \text{ e } \text{\AA}^{-3}$

Fractional atomic coordinates and isotropic or equivalent isotropic displacement parameters (\AA^2)

	<i>x</i>	<i>y</i>	<i>z</i>	$U_{\text{iso}}^*/U_{\text{eq}}$	Occ. (<1)
S1	1.02806 (12)	0.99939 (9)	0.19100 (9)	0.0171 (2)	0.727 (2)
C1	1.2328 (6)	1.0301 (6)	0.1115 (5)	0.0157 (7)	0.727 (2)
H1A	1.2578	1.1055	0.0578	0.019*	0.727 (2)
C2	1.3559 (7)	0.9300 (6)	0.1367 (5)	0.0163 (7)	0.727 (2)
H2	1.4748	0.9289	0.1022	0.020*	0.727 (2)
C3	1.2770 (14)	0.8250 (17)	0.2247 (12)	0.0299 (8)	0.727 (2)
H3	1.3373	0.7474	0.2526	0.036*	0.727 (2)
S1'	1.3139 (8)	0.8217 (10)	0.2250 (7)	0.0299 (8)	0.27
C1'	1.0531 (18)	0.9773 (13)	0.1982 (12)	0.0171 (2)	0.27
H1'	0.9394	1.0180	0.2067	0.021*	0.273 (2)
C2'	1.196 (2)	1.025 (2)	0.1248 (15)	0.0157 (7)	0.27
H2'	1.1922	1.1045	0.0750	0.019*	0.273 (2)
C3'	1.330 (2)	0.9528 (19)	0.1306 (17)	0.0163 (7)	0.27
H3'	1.4357	0.9723	0.0829	0.020*	0.273 (2)
O1	0.50080 (13)	0.56034 (11)	0.36325 (8)	0.0192 (2)	
N1	0.76813 (15)	0.61659 (12)	0.50268 (10)	0.0153 (2)	
H1	0.692 (2)	0.5628 (18)	0.5492 (14)	0.027 (4)*	
N2	0.64560 (17)	0.68980 (14)	0.08687 (10)	0.0219 (3)	
C4	1.10455 (19)	0.85666 (15)	0.25948 (11)	0.0162 (3)	
C5	0.71303 (18)	0.69445 (15)	0.18506 (12)	0.0168 (3)	
C6	0.67568 (18)	0.62164 (15)	0.38930 (12)	0.0159 (3)	
C7	0.79651 (18)	0.70041 (15)	0.30795 (12)	0.0159 (3)	
C8	0.98753 (19)	0.77471 (15)	0.34578 (12)	0.0160 (3)	
C9	1.06717 (19)	0.77150 (15)	0.46658 (12)	0.0162 (3)	

C10	1.26416 (19)	0.86240 (16)	0.52013 (12)	0.0198 (3)
H10A	1.2453	0.9555	0.5636	0.024*
H10B	1.3466	0.8896	0.4547	0.024*
C11	1.36693 (19)	0.77390 (16)	0.60685 (12)	0.0182 (3)
H11A	1.4051	0.6897	0.5610	0.022*
H11B	1.4876	0.8387	0.6482	0.022*
C12	1.23569 (19)	0.71478 (14)	0.69931 (12)	0.0164 (3)
C13	1.3114 (2)	0.69892 (15)	0.81603 (12)	0.0203 (3)
H13	1.4490	0.7224	0.8373	0.024*
C14	1.1894 (2)	0.64951 (16)	0.90172 (12)	0.0217 (3)
H14	1.2435	0.6397	0.9811	0.026*
C15	0.9873 (2)	0.61428 (15)	0.87154 (12)	0.0202 (3)
H15	0.9033	0.5831	0.9309	0.024*
C16	0.90914 (19)	0.62486 (15)	0.75477 (12)	0.0181 (3)
H16	0.7716	0.5983	0.7337	0.022*
C17	1.03169 (19)	0.67444 (14)	0.66757 (11)	0.0153 (3)
C18	0.95516 (18)	0.68759 (14)	0.54271 (11)	0.0153 (3)

Atomic displacement parameters (Å²)

	U^{11}	U^{22}	U^{33}	U^{12}	U^{13}	U^{23}
S1	0.0179 (4)	0.0139 (4)	0.0219 (3)	0.0049 (2)	0.0047 (2)	0.0097 (2)
C1	0.0132 (19)	0.0185 (8)	0.0149 (14)	-0.0033 (14)	0.0089 (11)	0.0063 (9)
C2	0.0145 (16)	0.0178 (19)	0.0197 (9)	0.0090 (9)	0.0038 (11)	0.0044 (11)
C3	0.029 (2)	0.0331 (6)	0.0259 (4)	-0.0033 (16)	0.0123 (14)	0.0043 (4)
S1'	0.029 (2)	0.0331 (6)	0.0259 (4)	-0.0033 (16)	0.0123 (14)	0.0043 (4)
C1'	0.0179 (4)	0.0139 (4)	0.0219 (3)	0.0049 (2)	0.0047 (2)	0.0097 (2)
C2'	0.0132 (19)	0.0185 (8)	0.0149 (14)	-0.0033 (14)	0.0089 (11)	0.0063 (9)
C3'	0.0145 (16)	0.0178 (19)	0.0197 (9)	0.0090 (9)	0.0038 (11)	0.0044 (11)
O1	0.0129 (4)	0.0267 (5)	0.0170 (5)	0.0003 (4)	0.0007 (3)	0.0071 (4)
N1	0.0134 (5)	0.0190 (6)	0.0137 (5)	0.0012 (4)	0.0029 (4)	0.0054 (4)
N2	0.0192 (6)	0.0287 (7)	0.0182 (6)	0.0045 (5)	0.0013 (5)	0.0070 (5)
C4	0.0159 (6)	0.0181 (7)	0.0138 (6)	0.0011 (5)	0.0005 (5)	0.0050 (5)
C5	0.0132 (6)	0.0189 (7)	0.0192 (7)	0.0030 (5)	0.0043 (5)	0.0055 (5)
C6	0.0141 (6)	0.0182 (6)	0.0160 (6)	0.0040 (5)	0.0015 (5)	0.0033 (5)
C7	0.0148 (6)	0.0191 (7)	0.0147 (6)	0.0043 (5)	0.0026 (5)	0.0052 (5)
C8	0.0159 (6)	0.0174 (6)	0.0163 (6)	0.0049 (5)	0.0038 (5)	0.0044 (5)
C9	0.0147 (6)	0.0177 (6)	0.0158 (6)	0.0015 (5)	0.0022 (5)	0.0036 (5)
C10	0.0176 (6)	0.0222 (7)	0.0169 (6)	-0.0030 (5)	0.0010 (5)	0.0041 (5)
C11	0.0139 (6)	0.0220 (7)	0.0168 (6)	-0.0006 (5)	0.0004 (5)	0.0023 (5)
C12	0.0177 (6)	0.0149 (6)	0.0157 (6)	0.0015 (5)	0.0007 (5)	0.0009 (5)
C13	0.0190 (7)	0.0206 (7)	0.0186 (7)	-0.0007 (5)	-0.0024 (5)	0.0020 (5)
C14	0.0268 (7)	0.0212 (7)	0.0148 (6)	0.0005 (6)	-0.0030 (5)	0.0035 (5)
C15	0.0242 (7)	0.0201 (7)	0.0152 (6)	-0.0001 (5)	0.0037 (5)	0.0037 (5)
C16	0.0172 (6)	0.0191 (7)	0.0170 (6)	0.0009 (5)	0.0018 (5)	0.0028 (5)
C17	0.0175 (6)	0.0144 (6)	0.0138 (6)	0.0026 (5)	0.0015 (5)	0.0015 (5)
C18	0.0148 (6)	0.0163 (6)	0.0151 (6)	0.0036 (5)	0.0020 (5)	0.0020 (5)

Geometric parameters (Å, °)

S1—C4	1.7085 (14)	C6—C7	1.4378 (18)
S1—C1	1.743 (3)	C7—C8	1.3930 (18)
C1—C2	1.398 (6)	C8—C9	1.4175 (18)
C1—H1A	0.9500	C9—C18	1.3850 (18)
C2—C3	1.495 (15)	C9—C10	1.5156 (18)
C2—H2	0.9500	C10—C11	1.5230 (19)
C3—C4	1.377 (10)	C10—H10A	0.9900
C3—H3	0.9500	C10—H10B	0.9900
S1'—C4	1.631 (6)	C11—C12	1.5071 (17)
S1'—C3'	1.651 (19)	C11—H11A	0.9900
C1'—C2'	1.377 (18)	C11—H11B	0.9900
C1'—C4	1.427 (11)	C12—C13	1.3904 (18)
C1'—H1'	0.9500	C12—C17	1.4099 (18)
C2'—C3'	1.25 (2)	C13—C14	1.385 (2)
C2'—H2'	0.9500	C13—H13	0.9500
C3'—H3'	0.9500	C14—C15	1.393 (2)
O1—C6	1.2447 (16)	C14—H14	0.9500
N1—C18	1.3659 (17)	C15—C16	1.3856 (19)
N1—C6	1.3771 (16)	C15—H15	0.9500
N1—H1	0.885 (9)	C16—C17	1.4005 (18)
N2—C5	1.1491 (18)	C16—H16	0.9500
C4—C8	1.4770 (17)	C17—C18	1.4701 (17)
C5—C7	1.4361 (18)		
C4—S1—C1	92.12 (19)	C7—C8—C4	119.51 (12)
C2—C1—S1	111.6 (4)	C9—C8—C4	120.73 (12)
C2—C1—H1A	124.2	C18—C9—C8	118.65 (12)
S1—C1—H1A	124.2	C18—C9—C10	117.54 (12)
C1—C2—C3	111.6 (6)	C8—C9—C10	123.70 (12)
C1—C2—H2	124.2	C9—C10—C11	110.44 (11)
C3—C2—H2	124.2	C9—C10—H10A	109.6
C4—C3—C2	110.3 (10)	C11—C10—H10A	109.6
C4—C3—H3	124.9	C9—C10—H10B	109.6
C2—C3—H3	124.9	C11—C10—H10B	109.6
C4—S1'—C3'	90.2 (6)	H10A—C10—H10B	108.1
C2'—C1'—C4	108.7 (11)	C12—C11—C10	111.07 (11)
C2'—C1'—H1'	125.6	C12—C11—H11A	109.4
C4—C1'—H1'	125.6	C10—C11—H11A	109.4
C3'—C2'—C1'	112.7 (15)	C12—C11—H11B	109.4
C3'—C2'—H2'	123.6	C10—C11—H11B	109.4
C1'—C2'—H2'	123.6	H11A—C11—H11B	108.0
C2'—C3'—S1'	116.8 (14)	C13—C12—C17	118.92 (12)
C2'—C3'—H3'	121.6	C13—C12—C11	121.40 (12)
S1'—C3'—H3'	121.6	C17—C12—C11	119.69 (11)
C18—N1—C6	125.02 (11)	C14—C13—C12	121.08 (13)
C18—N1—H1	122.2 (12)	C14—C13—H13	119.5

C6—N1—H1	112.8 (12)	C12—C13—H13	119.5
C3—C4—C1'	110.3 (8)	C13—C14—C15	120.03 (13)
C3—C4—C8	124.6 (6)	C13—C14—H14	120.0
C1'—C4—C8	125.0 (5)	C15—C14—H14	120.0
C1'—C4—S1'	111.5 (6)	C16—C15—C14	119.84 (12)
C8—C4—S1'	123.5 (3)	C16—C15—H15	120.1
C3—C4—S1	114.4 (6)	C14—C15—H15	120.1
C8—C4—S1	120.97 (10)	C15—C16—C17	120.41 (12)
S1'—C4—S1	115.5 (3)	C15—C16—H16	119.8
N2—C5—C7	179.74 (15)	C17—C16—H16	119.8
O1—C6—N1	120.39 (11)	C16—C17—C12	119.65 (12)
O1—C6—C7	124.73 (12)	C16—C17—C18	122.26 (12)
N1—C6—C7	114.88 (11)	C12—C17—C18	118.08 (11)
C8—C7—C5	121.69 (11)	N1—C18—C9	119.93 (12)
C8—C7—C6	121.52 (12)	N1—C18—C17	118.58 (11)
C5—C7—C6	116.76 (11)	C9—C18—C17	121.49 (12)
C7—C8—C9	119.75 (12)		
C4—S1—C1—C2	0.8 (4)	S1—C4—C8—C7	59.63 (16)
S1—C1—C2—C3	0.0 (8)	C3—C4—C8—C9	61.7 (7)
C1—C2—C3—C4	-1.1 (11)	C1'—C4—C8—C9	-119.9 (7)
C4—C1'—C2'—C3'	0 (2)	S1'—C4—C8—C9	58.6 (4)
C1'—C2'—C3'—S1'	-2 (2)	S1—C4—C8—C9	-120.06 (13)
C4—S1'—C3'—C2'	2.4 (17)	C7—C8—C9—C18	3.23 (19)
C2—C3—C4—C1'	1.5 (11)	C4—C8—C9—C18	-177.08 (12)
C2—C3—C4—C8	-179.9 (5)	C7—C8—C9—C10	-172.91 (12)
C2—C3—C4—S1'	-113 (20)	C4—C8—C9—C10	6.8 (2)
C2—C3—C4—S1	1.7 (10)	C18—C9—C10—C11	40.78 (16)
C2'—C1'—C4—C3	-0.9 (14)	C8—C9—C10—C11	-143.04 (13)
C2'—C1'—C4—C8	-179.6 (9)	C9—C10—C11—C12	-52.44 (15)
C2'—C1'—C4—S1'	1.8 (13)	C10—C11—C12—C13	-147.28 (13)
C2'—C1'—C4—S1	-177 (9)	C10—C11—C12—C17	32.72 (17)
C3'—S1'—C4—C3	64 (19)	C17—C12—C13—C14	-2.3 (2)
C3'—S1'—C4—C1'	-2.3 (10)	C11—C12—C13—C14	177.69 (13)
C3'—S1'—C4—C8	179.1 (7)	C12—C13—C14—C15	0.2 (2)
C3'—S1'—C4—S1	-2.2 (8)	C13—C14—C15—C16	1.8 (2)
C1—S1—C4—C3	-1.5 (6)	C14—C15—C16—C17	-1.6 (2)
C1—S1—C4—C1'	2 (8)	C15—C16—C17—C12	-0.5 (2)
C1—S1—C4—C8	-180.0 (2)	C15—C16—C17—C18	-179.92 (12)
C1—S1—C4—S1'	1.3 (4)	C13—C12—C17—C16	2.4 (2)
C18—N1—C6—O1	-175.77 (12)	C11—C12—C17—C16	-177.59 (12)
C18—N1—C6—C7	4.57 (19)	C13—C12—C17—C18	-178.11 (12)
O1—C6—C7—C8	175.70 (13)	C11—C12—C17—C18	1.90 (18)
N1—C6—C7—C8	-4.65 (19)	C6—N1—C18—C9	-0.6 (2)
O1—C6—C7—C5	-6.4 (2)	C6—N1—C18—C17	178.47 (11)
N1—C6—C7—C5	173.28 (11)	C8—C9—C18—N1	-3.49 (19)
C5—C7—C8—C9	-176.88 (12)	C10—C9—C18—N1	172.89 (12)
C6—C7—C8—C9	0.9 (2)	C8—C9—C18—C17	177.49 (11)

C5—C7—C8—C4	3.42 (19)	C10—C9—C18—C17	-6.14 (19)
C6—C7—C8—C4	-178.75 (12)	C16—C17—C18—N1	-16.20 (19)
C3—C4—C8—C7	-118.6 (7)	C12—C17—C18—N1	164.33 (12)
C1'—C4—C8—C7	59.8 (7)	C16—C17—C18—C9	162.84 (13)
S1'—C4—C8—C7	-121.7 (4)	C12—C17—C18—C9	-16.63 (19)

Hydrogen-bond geometry (Å, °)

<i>D</i> —H \cdots <i>A</i>	<i>D</i> —H	H \cdots <i>A</i>	<i>D</i> \cdots <i>A</i>	<i>D</i> —H \cdots <i>A</i>
N1—H1 \cdots O1 ⁱ	0.89 (1)	1.97 (1)	2.851 (1)	173 (2)

Symmetry code: (i) $-x+1, -y+1, -z+1$.