

Acta Crystallographica Section E

## Structure Reports

Online

ISSN 1600-5368

# Ethyl 1-[3-(1*H*-imidazol-1-yl)propyl]-2-(4-chlorophenyl)-1*H*-benzo[*d*]imidazole-5-carboxylate dihydrate

 Yeong Keng Yoon,<sup>a</sup> Mohamed Ashraf Ali,<sup>a</sup> Ang Chee Wei,<sup>a</sup> Ching Kheng Quah<sup>b‡</sup> and Hoong-Kun Fun<sup>b\*§</sup>

<sup>a</sup>Institute for Research in Molecular Medicine, Universiti Sains Malaysia, 11800 USM, Penang, Malaysia, and <sup>b</sup>X-ray Crystallography Unit, School of Physics, Universiti Sains Malaysia, 11800 USM, Penang, Malaysia  
Correspondence e-mail: hkfun@usm.my

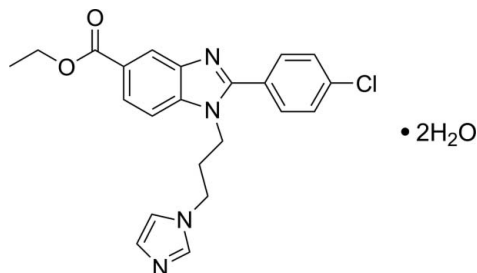
Received 16 August 2011; accepted 18 August 2011

Key indicators: single-crystal X-ray study;  $T = 100$  K; mean  $\sigma(\text{C}-\text{C}) = 0.002$  Å;  $R$  factor = 0.048;  $wR$  factor = 0.136; data-to-parameter ratio = 27.8.

In the title compound,  $\text{C}_{22}\text{H}_{21}\text{ClN}_4\text{O}_2 \cdot 2\text{H}_2\text{O}$ , the almost-planar benzimidazole ring system [maximum deviation 0.014 (1) Å] is inclined at angles of 36.32 (5) and 74.75 (7)° with respect to the phenyl and imidazole rings, respectively. In the crystal structure, the water molecules are linked to the organic molecules to form a three-dimensional network via  $\text{O}-\text{H} \cdots \text{N}$  and  $\text{O}-\text{H} \cdots \text{O}$  hydrogen bonds. The packing is further consolidated by a pair of bifurcated  $\text{C}-\text{H} \cdots \text{O}$  bonds, generating  $R_2^1(6)$  loops.  $\text{C}-\text{H} \cdots \pi$  interactions are also observed.

## Related literature

For related structures and background to benzimidazoles, see: Eltayeb *et al.* (2009, 2011). For standard bond-length data, see: Allen *et al.* (1987). For hydrogen-bond motifs, see: Bernstein *et al.* (1995). For the stability of the temperature controller used for the data collection, see: Cosier & Glazer (1986).



## Experimental

## Crystal data

 $\text{C}_{22}\text{H}_{21}\text{ClN}_4\text{O}_2 \cdot 2\text{H}_2\text{O}$   
 $M_r = 444.91$ 

 Monoclinic,  $P2_1/c$   
 $a = 9.0611$  (1) Å

<sup>‡</sup> Thomson Reuters ResearcherID: A-5525-2009.

<sup>§</sup> Thomson Reuters ResearcherID: A-3561-2009.

 $b = 13.8393$  (2) Å  
 $c = 18.0470$  (3) Å  
 $\beta = 92.386$  (1)°  
 $V = 2261.12$  (6) Å<sup>3</sup>  
 $Z = 4$ 

 Mo  $K\alpha$  radiation

 $\mu = 0.20$  mm<sup>-1</sup>
 $T = 100$  K

 $0.40 \times 0.30 \times 0.27$  mm

## Data collection

 Bruker SMART APEX II CCD diffractometer  
 Absorption correction: multi-scan (SADABS; Bruker, 2009)  
 $T_{\min} = 0.922$ ,  $T_{\max} = 0.947$ 

 31604 measured reflections  
 8235 independent reflections  
 6221 reflections with  $I > 2\sigma(I)$   
 $R_{\text{int}} = 0.030$ 

## Refinement

 $R[F^2 > 2\sigma(F^2)] = 0.048$   
 $wR(F^2) = 0.136$   
 $S = 1.05$   
 8235 reflections  
 296 parameters

H atoms treated by a mixture of independent and constrained refinement

 $\Delta\rho_{\text{max}} = 0.54$  e Å<sup>-3</sup>
 $\Delta\rho_{\text{min}} = -0.40$  e Å<sup>-3</sup>

Table 1

Hydrogen-bond geometry (Å, °).

Cg1 is the centroid of the C1–C6 phenyl ring.

$D-H \cdots A$	$D-H$	$H \cdots A$	$D \cdots A$	$D-H \cdots A$
$\text{O1}W-H1W1 \cdots \text{N1}^i$	0.94 (3)	1.96 (3)	2.8802 (14)	164 (2)
$\text{O1}W-H2W1 \cdots \text{O2}W^{ii}$	0.91 (2)	1.83 (2)	2.7284 (18)	169 (2)
$\text{O2}W-H1W2 \cdots \text{N4}^{iii}$	0.849 (19)	1.978 (19)	2.8147 (19)	169 (2)
$\text{O2}W-H2W2 \cdots \text{O2}^j$	0.87 (2)	1.98 (2)	2.8460 (17)	172 (2)
$\text{C17}-\text{H17B} \cdots \text{O1}W^{iv}$	0.99	2.49	3.3785 (16)	149
$\text{C19}-\text{H19B} \cdots \text{O1}W^{iv}$	0.99	2.51	3.3799 (19)	147
$\text{C10}-\text{H10A} \cdots \text{Cg1}^v$	0.95	2.86	3.4875 (14)	125

Symmetry codes: (i)  $x, y, z - 1$ ; (ii)  $-x + 1, y + \frac{1}{2}, -z + \frac{1}{2}$ ; (iii)  $x + 1, -y + \frac{3}{2}, z - \frac{1}{2}$ ; (iv)  $x, -y + \frac{3}{2}, z + \frac{1}{2}$ ; (v)  $-x + 1, -y + 2, -z + 2$ .

Data collection: APEX2 (Bruker, 2009); cell refinement: SAINT (Bruker, 2009); data reduction: SAINT; program(s) used to solve structure: SHELXTL (Sheldrick, 2008); program(s) used to refine structure: SHELXTL; molecular graphics: SHELXTL; software used to prepare material for publication: SHELXTL and PLATON (Spek, 2009).

The authors thank Universiti Sains Malaysia (USM), Penang, Malaysia, for providing research facilities. HKF and CKQ also thank USM for a Research University Grant (No. 1001/PFIZIK/811160).

Supplementary data and figures for this paper are available from the IUCr electronic archives (Reference: HB6369).

## References

- Allen, F. H., Kennard, O., Watson, D. G., Brammer, L., Orpen, A. G. & Taylor, R. (1987). *J. Chem. Soc. Perkin Trans. 2*, S1–S19.  
 Bernstein, J., Davis, R. E., Shimoni, L. & Chang, N.-L. (1995). *Angew. Chem. Int. Ed. Engl.* **34**, 1555–1573.  
 Bruker (2009). APEX2, SAINT and SADABS. Bruker AXS Inc., Madison, Wisconsin, USA.  
 Cosier, J. & Glazer, A. M. (1986). *J. Appl. Cryst.* **19**, 105–107.  
 Eltayeb, N. E., Teoh, S. G., Quah, C. K. & Fun, H.-K. (2011). *Acta Cryst.* **E67**, o2243–o2244.  
 Eltayeb, N. E., Teoh, S. G., Quah, C. K., Fun, H.-K. & Adnan, R. (2009). *Acta Cryst.* **E65**, o1613–o1614.  
 Sheldrick, G. M. (2008). *Acta Cryst.* **A64**, 112–122.  
 Spek, A. L. (2009). *Acta Cryst.* **D65**, 148–155.

## supporting information

*Acta Cryst.* (2011). E67, o2405 [doi:10.1107/S1600536811033654]

## Ethyl 1-[3-(1*H*-imidazol-1-yl)propyl]-2-(4-chlorophenyl)-1*H*-benzo[*d*]imidazole-5-carboxylate dihydrate

Yeong Keng Yoon, Mohamed Ashraf Ali, Ang Chee Wei, Ching Kheng Quah and Hoong-Kun Fun

### S1. Comment

As part of our ongoing structural studies of benzimidazole derivatives (Eltayeb *et al.*, 2011), we now report the structure of the title compound, (I), which crystallised as a dihydrate.

In the title molecule, Fig. 1, the benzimidazole ring system (N1/N2/C1–C7, maximum deviation of 0.014 (1) Å at atom C4) is inclined at angles of 36.32 (5) and 74.75 (7)° with respect to the phenyl (C8–C13) and imidazole (N3/N4/C20–C22) rings. Bond lengths (Allen *et al.*, 1987) and angles are within normal ranges and are comparable to those in related structures (Eltayeb *et al.*, 2009, 2011).

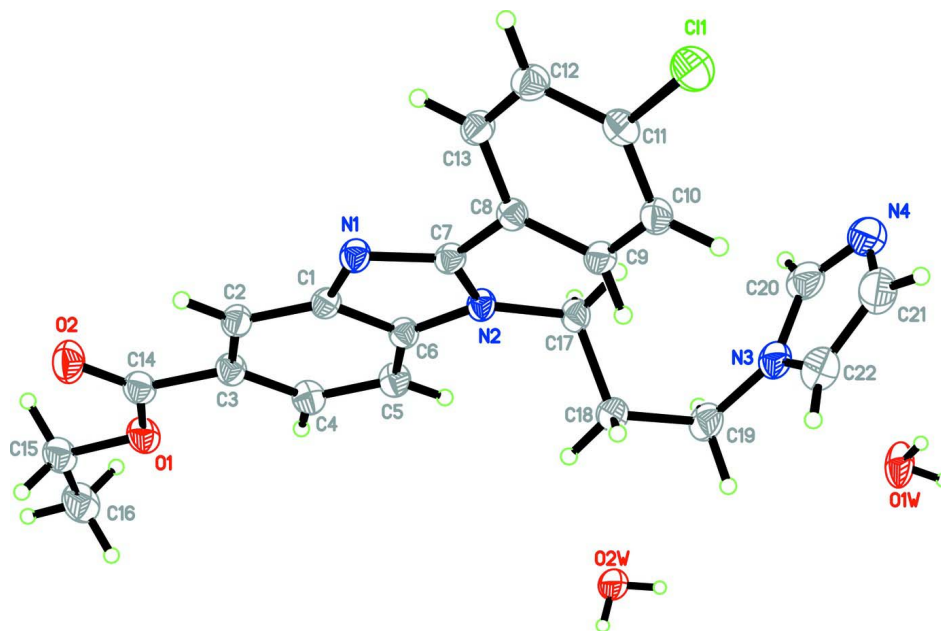
In the crystal, water molecules are linked to main molecules to form a three-dimensional network (Fig. 2) by O1W—H1W1···N1, O1W—H2W1···O2W, O2W—H1W2···N4 and O2W—H2W2···O2 hydrogen bonds (Table 1). The crystal packing is further consolidated by bifurcated C17—H17B···O1W and C19—H19B···O1W acceptor bonds, generating  $R^1_2(6)$  ring motifs (Bernstein *et al.*, 1995). The crystal structure is also stabilized by C10—H10A···Cg1 (Table 1) interactions, where Cg1 is the centroid of the C1–C6 phenyl ring.

### S2. Experimental

Ethyl 4-(3-(1*H*-imidazol-1-yl)propylamino)-3-aminobenzoate (0.84 mmol) and sodium metabisulfite adduct of chlorobenzaldehyde (1.68 mmol) were dissolved in DMF. The reaction mixture was refluxed at 403 K for 2 h. After completion, the reaction mixture was diluted in ethyl acetate (20 ml) and washed with water (20 ml). The organic layer was collected, dried over Na<sub>2</sub>SO<sub>4</sub> and then evaporated in vacuo to yield the product. The product was recrystallised from ethyl acetate to yield bronze blocks of (I).

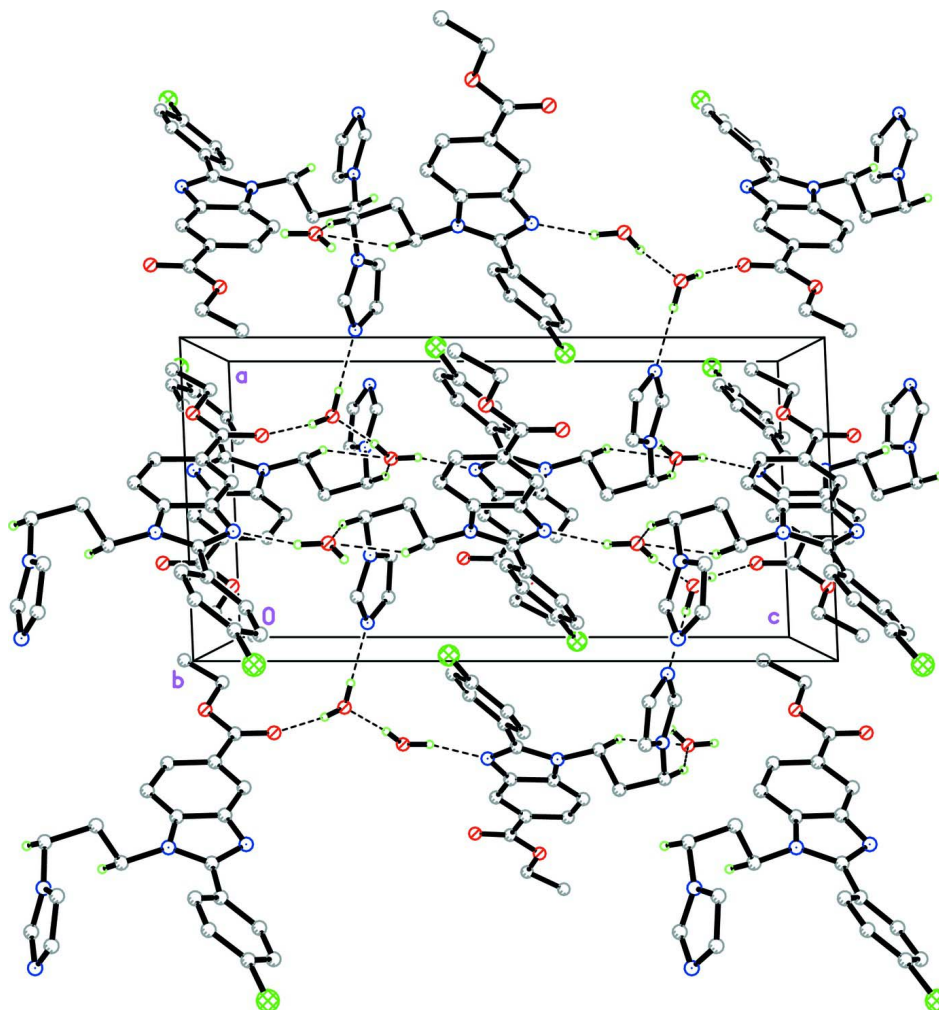
### S3. Refinement

O-bound H atoms were located from the difference Fourier map and refined freely [O—H = 0.85 (2)–0.94 (3) Å]. The remaining H atoms were positioned geometrically and refined using a riding model with C—H = 0.95–0.99 Å and  $U_{\text{iso}}(\text{H}) = 1.2 U_{\text{eq}}(\text{C})$ . A rotating-group model was applied for the methyl group.



**Figure 1**

The molecular structure of the title compound showing 50% probability displacement ellipsoids for non-H atoms.



**Figure 2**

The crystal structure of the title compound, viewed along the *b* axis. H atoms not involved in hydrogen bonds (dashed lines) have been omitted for clarity.

**Ethyl 1-[3-(1*H*-imidazol-1-yl)propyl]-2-(4-chlorophenyl)-1*H*-benzo[*d*]imidazole-5-carboxylate dihydrate**

*Crystal data*

$C_{22}H_{21}ClN_4O_2 \cdot 2H_2O$

$M_r = 444.91$

Monoclinic,  $P2_1/c$

Hall symbol:  $-P\ 2ybc$

$a = 9.0611(1)\ \text{\AA}$

$b = 13.8393(2)\ \text{\AA}$

$c = 18.0470(3)\ \text{\AA}$

$\beta = 92.386(1)^\circ$

$V = 2261.12(6)\ \text{\AA}^3$

$Z = 4$

$F(000) = 936$

$D_x = 1.307\ \text{Mg m}^{-3}$

Mo  $K\alpha$  radiation,  $\lambda = 0.71073\ \text{\AA}$

Cell parameters from 9994 reflections

$\theta = 2.3\text{--}32.3^\circ$

$\mu = 0.20\ \text{mm}^{-1}$

$T = 100\ \text{K}$

Block, bronze

$0.40 \times 0.30 \times 0.27\ \text{mm}$

*Data collection*

Bruker SMART APEX II CCD  
diffractometer  
Radiation source: fine-focus sealed tube  
Graphite monochromator  
 $\varphi$  and  $\omega$  scans  
Absorption correction: multi-scan  
(*SADABS*; Bruker, 2009)  
 $T_{\min} = 0.922$ ,  $T_{\max} = 0.947$

31604 measured reflections  
8235 independent reflections  
6221 reflections with  $I > 2\sigma(I)$   
 $R_{\text{int}} = 0.030$   
 $\theta_{\text{max}} = 32.7^\circ$ ,  $\theta_{\text{min}} = 2.3^\circ$   
 $h = -13 \rightarrow 12$   
 $k = -15 \rightarrow 20$   
 $l = -27 \rightarrow 27$

*Refinement*

Refinement on  $F^2$   
Least-squares matrix: full  
 $R[F^2 > 2\sigma(F^2)] = 0.048$   
 $wR(F^2) = 0.136$   
 $S = 1.05$   
8235 reflections  
296 parameters  
0 restraints  
Primary atom site location: structure-invariant  
direct methods

Secondary atom site location: difference Fourier  
map  
Hydrogen site location: inferred from  
neighbouring sites  
H atoms treated by a mixture of independent  
and constrained refinement  
 $w = 1/[\sigma^2(F_o^2) + (0.067P)^2 + 0.584P]$   
where  $P = (F_o^2 + 2F_c^2)/3$   
 $(\Delta/\sigma)_{\text{max}} = 0.001$   
 $\Delta\rho_{\text{max}} = 0.54 \text{ e } \text{\AA}^{-3}$   
 $\Delta\rho_{\text{min}} = -0.40 \text{ e } \text{\AA}^{-3}$

*Special details*

**Experimental.** The crystal was placed in the cold stream of an Oxford Cryosystems Cobra open-flow nitrogen cryostat (Cosier & Glazer, 1986) operating at 100.0 (1) K.

**Geometry.** All esds (except the esd in the dihedral angle between two l.s. planes) are estimated using the full covariance matrix. The cell esds are taken into account individually in the estimation of esds in distances, angles and torsion angles; correlations between esds in cell parameters are only used when they are defined by crystal symmetry. An approximate (isotropic) treatment of cell esds is used for estimating esds involving l.s. planes.

**Refinement.** Refinement of  $F^2$  against ALL reflections. The weighted R-factor  $wR$  and goodness of fit  $S$  are based on  $F^2$ , conventional R-factors  $R$  are based on  $F$ , with  $F$  set to zero for negative  $F^2$ . The threshold expression of  $F^2 > 2\sigma(F^2)$  is used only for calculating R-factors(gt) etc. and is not relevant to the choice of reflections for refinement. R-factors based on  $F^2$  are statistically about twice as large as those based on  $F$ , and R-factors based on ALL data will be even larger.

*Fractional atomic coordinates and isotropic or equivalent isotropic displacement parameters ( $\text{\AA}^2$ )*

	<i>x</i>	<i>y</i>	<i>z</i>	$U_{\text{iso}}^*/U_{\text{eq}}$
C11	0.00707 (4)	1.20793 (2)	1.108564 (19)	0.03204 (9)
O1	0.79039 (11)	0.47315 (7)	0.97069 (5)	0.0284 (2)
O2	0.71434 (12)	0.49126 (7)	1.08701 (6)	0.0345 (2)
N1	0.39801 (11)	0.80622 (7)	1.05570 (5)	0.02072 (19)
N2	0.39541 (11)	0.84567 (7)	0.93472 (5)	0.01967 (19)
N3	0.31059 (13)	1.05497 (9)	0.76026 (6)	0.0275 (2)
N4	0.07811 (15)	1.10407 (11)	0.74881 (7)	0.0405 (3)
C1	0.47996 (13)	0.73886 (9)	1.01809 (6)	0.0201 (2)
C2	0.55633 (14)	0.65815 (9)	1.04496 (6)	0.0223 (2)
H2A	0.5563	0.6408	1.0959	0.027*
C3	0.63268 (14)	0.60382 (9)	0.99427 (7)	0.0228 (2)
C4	0.63171 (14)	0.62896 (9)	0.91822 (7)	0.0246 (2)
H4A	0.6859	0.5905	0.8852	0.030*
C5	0.55404 (14)	0.70792 (9)	0.89077 (6)	0.0237 (2)

H5A	0.5516	0.7241	0.8396	0.028*
C6	0.47921 (13)	0.76287 (9)	0.94225 (6)	0.0201 (2)
C7	0.34981 (13)	0.86860 (9)	1.00442 (6)	0.0194 (2)
C8	0.25981 (13)	0.95260 (8)	1.02341 (6)	0.0192 (2)
C9	0.27664 (13)	1.04393 (9)	0.99159 (6)	0.0214 (2)
H9A	0.3421	1.0521	0.9523	0.026*
C10	0.19832 (14)	1.12307 (9)	1.01704 (7)	0.0228 (2)
H10A	0.2098	1.1850	0.9953	0.027*
C11	0.10321 (14)	1.11010 (9)	1.07454 (7)	0.0235 (2)
C12	0.08425 (14)	1.01997 (9)	1.10666 (7)	0.0253 (2)
H12A	0.0183	1.0121	1.1458	0.030*
C13	0.16240 (14)	0.94177 (9)	1.08108 (6)	0.0229 (2)
H13A	0.1498	0.8800	1.1029	0.027*
C14	0.71494 (14)	0.51778 (9)	1.02296 (7)	0.0255 (2)
C15	0.87442 (16)	0.38867 (10)	0.99498 (8)	0.0303 (3)
H15A	0.8083	0.3398	1.0160	0.036*
H15B	0.9503	0.4068	1.0335	0.036*
C16	0.94627 (18)	0.34885 (11)	0.92785 (9)	0.0379 (3)
H16A	1.0040	0.2914	0.9419	0.057*
H16B	1.0116	0.3979	0.9077	0.057*
H16C	0.8700	0.3314	0.8901	0.057*
C17	0.35549 (14)	0.89102 (9)	0.86335 (6)	0.0219 (2)
H17A	0.2697	0.9342	0.8694	0.026*
H17B	0.3256	0.8402	0.8271	0.026*
C18	0.48274 (14)	0.94958 (10)	0.83277 (6)	0.0260 (2)
H18A	0.5095	1.0027	0.8675	0.031*
H18B	0.5703	0.9074	0.8286	0.031*
C19	0.43969 (16)	0.99175 (11)	0.75674 (7)	0.0293 (3)
H19A	0.5238	1.0290	0.7382	0.035*
H19B	0.4175	0.9385	0.7214	0.035*
C20	0.17101 (17)	1.03385 (12)	0.73574 (7)	0.0339 (3)
H20A	0.1435	0.9750	0.7118	0.041*
C21	0.16200 (19)	1.17397 (13)	0.78406 (9)	0.0414 (4)
H21A	0.1252	1.2341	0.8007	0.050*
C22	0.30538 (18)	1.14512 (11)	0.79179 (8)	0.0349 (3)
H22A	0.3854	1.1802	0.8144	0.042*
O1W	0.35783 (15)	0.73706 (9)	0.20403 (6)	0.0449 (3)
O2W	0.78478 (15)	0.35533 (11)	0.20142 (7)	0.0478 (3)
H1W1	0.354 (3)	0.7653 (18)	0.1566 (14)	0.067 (7)*
H2W1	0.307 (2)	0.7811 (16)	0.2306 (12)	0.052 (6)*
H1W2	0.870 (2)	0.3758 (15)	0.2149 (12)	0.045 (5)*
H2W2	0.757 (3)	0.3993 (16)	0.1690 (14)	0.057 (6)*

Atomic displacement parameters ( $\text{\AA}^2$ )

	$U^{11}$	$U^{22}$	$U^{33}$	$U^{12}$	$U^{13}$	$U^{23}$
Cl1	0.03324 (18)	0.02542 (16)	0.03796 (17)	0.00757 (13)	0.00755 (13)	-0.00212 (12)
O1	0.0276 (5)	0.0222 (4)	0.0355 (5)	0.0066 (4)	0.0011 (4)	0.0004 (4)

O2	0.0391 (6)	0.0306 (5)	0.0336 (5)	0.0089 (4)	0.0012 (4)	0.0078 (4)
N1	0.0233 (5)	0.0215 (5)	0.0175 (4)	0.0019 (4)	0.0022 (3)	0.0011 (3)
N2	0.0222 (5)	0.0213 (4)	0.0156 (4)	0.0017 (4)	0.0010 (3)	0.0011 (3)
N3	0.0310 (6)	0.0312 (6)	0.0202 (4)	-0.0011 (5)	-0.0003 (4)	0.0056 (4)
N4	0.0324 (6)	0.0539 (8)	0.0351 (6)	0.0007 (6)	0.0024 (5)	0.0165 (6)
C1	0.0211 (5)	0.0217 (5)	0.0174 (4)	-0.0001 (4)	0.0020 (4)	0.0005 (4)
C2	0.0239 (6)	0.0225 (5)	0.0204 (5)	0.0009 (4)	0.0013 (4)	0.0020 (4)
C3	0.0232 (6)	0.0201 (5)	0.0250 (5)	0.0017 (4)	0.0003 (4)	0.0001 (4)
C4	0.0264 (6)	0.0249 (6)	0.0227 (5)	0.0037 (5)	0.0025 (4)	-0.0032 (4)
C5	0.0270 (6)	0.0261 (6)	0.0180 (5)	0.0023 (5)	0.0019 (4)	-0.0015 (4)
C6	0.0209 (5)	0.0217 (5)	0.0176 (4)	0.0010 (4)	0.0006 (4)	0.0003 (4)
C7	0.0201 (5)	0.0213 (5)	0.0168 (4)	-0.0007 (4)	0.0017 (4)	0.0002 (4)
C8	0.0199 (5)	0.0205 (5)	0.0173 (4)	0.0003 (4)	0.0000 (4)	-0.0003 (4)
C9	0.0209 (5)	0.0237 (5)	0.0196 (4)	-0.0008 (4)	0.0004 (4)	0.0021 (4)
C10	0.0231 (5)	0.0200 (5)	0.0251 (5)	0.0004 (4)	-0.0009 (4)	0.0026 (4)
C11	0.0217 (5)	0.0232 (5)	0.0255 (5)	0.0028 (4)	0.0000 (4)	-0.0020 (4)
C12	0.0256 (6)	0.0259 (6)	0.0246 (5)	0.0012 (5)	0.0055 (4)	-0.0002 (4)
C13	0.0246 (6)	0.0219 (5)	0.0225 (5)	0.0005 (4)	0.0041 (4)	0.0017 (4)
C14	0.0237 (6)	0.0209 (5)	0.0317 (6)	0.0011 (5)	-0.0005 (4)	0.0008 (4)
C15	0.0276 (6)	0.0217 (6)	0.0413 (7)	0.0049 (5)	-0.0009 (5)	0.0011 (5)
C16	0.0360 (8)	0.0301 (7)	0.0473 (8)	0.0094 (6)	0.0010 (6)	-0.0014 (6)
C17	0.0240 (5)	0.0268 (6)	0.0149 (4)	0.0021 (5)	-0.0005 (4)	0.0023 (4)
C18	0.0244 (6)	0.0324 (6)	0.0212 (5)	0.0008 (5)	0.0021 (4)	0.0051 (5)
C19	0.0338 (7)	0.0342 (7)	0.0203 (5)	0.0022 (5)	0.0054 (5)	0.0052 (5)
C20	0.0344 (7)	0.0438 (8)	0.0232 (5)	-0.0083 (6)	-0.0025 (5)	0.0084 (5)
C21	0.0451 (9)	0.0374 (8)	0.0421 (8)	0.0076 (7)	0.0070 (7)	0.0098 (6)
C22	0.0406 (8)	0.0317 (7)	0.0323 (6)	-0.0015 (6)	0.0010 (6)	0.0033 (5)
O1W	0.0663 (8)	0.0436 (6)	0.0255 (5)	0.0184 (6)	0.0094 (5)	0.0097 (5)
O2W	0.0364 (6)	0.0639 (8)	0.0424 (6)	-0.0085 (6)	-0.0064 (5)	0.0247 (6)

*Geometric parameters (Å, °)*

C11—C11	1.7358 (13)	C10—C11	1.3880 (17)
O1—C14	1.3387 (16)	C10—H10A	0.9500
O1—C15	1.4529 (16)	C11—C12	1.3892 (18)
O2—C14	1.2131 (16)	C12—C13	1.3831 (17)
N1—C7	1.3261 (15)	C12—H12A	0.9500
N1—C1	1.3868 (15)	C13—H13A	0.9500
N2—C7	1.3773 (14)	C15—C16	1.504 (2)
N2—C6	1.3782 (15)	C15—H15A	0.9900
N2—C17	1.4646 (14)	C15—H15B	0.9900
N3—C20	1.3544 (18)	C16—H16A	0.9800
N3—C22	1.3729 (19)	C16—H16B	0.9800
N3—C19	1.4642 (18)	C16—H16C	0.9800
N4—C20	1.313 (2)	C17—C18	1.5310 (18)
N4—C21	1.370 (2)	C17—H17A	0.9900
C1—C2	1.3906 (17)	C17—H17B	0.9900
C1—C6	1.4081 (15)	C18—C19	1.5268 (17)

C2—C3	1.3906 (17)	C18—H18A	0.9900
C2—H2A	0.9500	C18—H18B	0.9900
C3—C4	1.4154 (17)	C19—H19A	0.9900
C3—C14	1.4864 (17)	C19—H19B	0.9900
C4—C5	1.3805 (17)	C20—H20A	0.9500
C4—H4A	0.9500	C21—C22	1.361 (2)
C5—C6	1.3979 (16)	C21—H21A	0.9500
C5—H5A	0.9500	C22—H22A	0.9500
C7—C8	1.4687 (16)	O1W—H1W1	0.94 (3)
C8—C9	1.3993 (16)	O1W—H2W1	0.91 (2)
C8—C13	1.4004 (16)	O2W—H1W2	0.85 (2)
C9—C10	1.3933 (17)	O2W—H2W2	0.87 (2)
C9—H9A	0.9500		
C14—O1—C15	115.80 (10)	C12—C13—H13A	119.6
C7—N1—C1	105.28 (9)	C8—C13—H13A	119.6
C7—N2—C6	106.64 (9)	O2—C14—O1	123.67 (12)
C7—N2—C17	129.20 (10)	O2—C14—C3	123.52 (12)
C6—N2—C17	123.91 (9)	O1—C14—C3	112.80 (11)
C20—N3—C22	106.48 (13)	O1—C15—C16	106.91 (11)
C20—N3—C19	126.43 (13)	O1—C15—H15A	110.3
C22—N3—C19	127.03 (12)	C16—C15—H15A	110.3
C20—N4—C21	104.98 (13)	O1—C15—H15B	110.3
N1—C1—C2	129.64 (10)	C16—C15—H15B	110.3
N1—C1—C6	109.64 (10)	H15A—C15—H15B	108.6
C2—C1—C6	120.72 (10)	C15—C16—H16A	109.5
C1—C2—C3	117.31 (10)	C15—C16—H16B	109.5
C1—C2—H2A	121.3	H16A—C16—H16B	109.5
C3—C2—H2A	121.3	C15—C16—H16C	109.5
C2—C3—C4	121.46 (11)	H16A—C16—H16C	109.5
C2—C3—C14	117.39 (11)	H16B—C16—H16C	109.5
C4—C3—C14	121.16 (11)	N2—C17—C18	112.44 (10)
C5—C4—C3	121.67 (11)	N2—C17—H17A	109.1
C5—C4—H4A	119.2	C18—C17—H17A	109.1
C3—C4—H4A	119.2	N2—C17—H17B	109.1
C4—C5—C6	116.50 (11)	C18—C17—H17B	109.1
C4—C5—H5A	121.7	H17A—C17—H17B	107.8
C6—C5—H5A	121.7	C19—C18—C17	110.99 (10)
N2—C6—C5	131.86 (10)	C19—C18—H18A	109.4
N2—C6—C1	105.81 (10)	C17—C18—H18A	109.4
C5—C6—C1	122.33 (11)	C19—C18—H18B	109.4
N1—C7—N2	112.63 (10)	C17—C18—H18B	109.4
N1—C7—C8	121.49 (10)	H18A—C18—H18B	108.0
N2—C7—C8	125.88 (10)	N3—C19—C18	111.35 (10)
C9—C8—C13	118.98 (11)	N3—C19—H19A	109.4
C9—C8—C7	123.24 (10)	C18—C19—H19A	109.4
C13—C8—C7	117.52 (10)	N3—C19—H19B	109.4
C10—C9—C8	120.61 (11)	C18—C19—H19B	109.4



C10—C9—H9A	119.7	H19A—C19—H19B	108.0
C8—C9—H9A	119.7	N4—C20—N3	112.24 (14)
C11—C10—C9	119.04 (11)	N4—C20—H20A	123.9
C11—C10—H10A	120.5	N3—C20—H20A	123.9
C9—C10—H10A	120.5	C22—C21—N4	110.43 (15)
C10—C11—C12	121.30 (11)	C22—C21—H21A	124.8
C10—C11—C11	120.00 (10)	N4—C21—H21A	124.8
C12—C11—C11	118.70 (9)	C21—C22—N3	105.87 (14)
C13—C12—C11	119.30 (11)	C21—C22—H22A	127.1
C13—C12—H12A	120.3	N3—C22—H22A	127.1
C11—C12—H12A	120.3	H1W1—O1W—H2W1	101.6 (19)
C12—C13—C8	120.77 (11)	H1W2—O2W—H2W2	101 (2)
C7—N1—C1—C2	179.48 (12)	C7—C8—C9—C10	-173.62 (11)
C7—N1—C1—C6	-0.08 (13)	C8—C9—C10—C11	0.05 (17)
N1—C1—C2—C3	-178.60 (12)	C9—C10—C11—C12	-0.39 (18)
C6—C1—C2—C3	0.91 (18)	C9—C10—C11—C11	178.71 (9)
C1—C2—C3—C4	-0.60 (18)	C10—C11—C12—C13	0.39 (19)
C1—C2—C3—C14	179.73 (11)	C11—C11—C12—C13	-178.73 (10)
C2—C3—C4—C5	-0.6 (2)	C11—C12—C13—C8	-0.04 (19)
C14—C3—C4—C5	179.08 (12)	C9—C8—C13—C12	-0.30 (18)
C3—C4—C5—C6	1.37 (19)	C7—C8—C13—C12	173.96 (11)
C7—N2—C6—C5	-179.35 (13)	C15—O1—C14—O2	-0.03 (19)
C17—N2—C6—C5	5.9 (2)	C15—O1—C14—C3	179.57 (10)
C7—N2—C6—C1	0.18 (13)	C2—C3—C14—O2	2.6 (2)
C17—N2—C6—C1	-174.58 (11)	C4—C3—C14—O2	-177.04 (13)
C4—C5—C6—N2	178.41 (12)	C2—C3—C14—O1	-176.97 (11)
C4—C5—C6—C1	-1.06 (19)	C4—C3—C14—O1	3.36 (17)
N1—C1—C6—N2	-0.07 (13)	C14—O1—C15—C16	178.52 (12)
C2—C1—C6—N2	-179.67 (11)	C7—N2—C17—C18	108.32 (14)
N1—C1—C6—C5	179.52 (11)	C6—N2—C17—C18	-78.16 (14)
C2—C1—C6—C5	-0.08 (19)	N2—C17—C18—C19	177.29 (10)
C1—N1—C7—N2	0.20 (14)	C20—N3—C19—C18	-105.09 (14)
C1—N1—C7—C8	-178.91 (10)	C22—N3—C19—C18	71.78 (17)
C6—N2—C7—N1	-0.24 (14)	C17—C18—C19—N3	59.23 (15)
C17—N2—C7—N1	174.15 (11)	C21—N4—C20—N3	-0.39 (16)
C6—N2—C7—C8	178.82 (11)	C22—N3—C20—N4	0.51 (15)
C17—N2—C7—C8	-6.79 (19)	C19—N3—C20—N4	177.91 (11)
N1—C7—C8—C9	140.42 (12)	C20—N4—C21—C22	0.12 (17)
N2—C7—C8—C9	-38.57 (18)	N4—C21—C22—N3	0.19 (17)
N1—C7—C8—C13	-33.57 (16)	C20—N3—C22—C21	-0.41 (15)
N2—C7—C8—C13	147.44 (12)	C19—N3—C22—C21	-177.78 (12)
C13—C8—C9—C10	0.29 (17)		

*Hydrogen-bond geometry* ( $\text{\AA}$ ,  $^\circ$ )

Cg1 is the centroid of the C1–C6 phenyl ring.

$D-H\cdots A$	$D-H$	$H\cdots A$	$D\cdots A$	$D-H\cdots A$
O1 <i>W</i> —H1 <i>W</i> 1 $\cdots$ N1 <sup>i</sup>	0.94 (3)	1.96 (3)	2.8802 (14)	164 (2)
O1 <i>W</i> —H2 <i>W</i> 1 $\cdots$ O2 <i>W</i> <sup>ii</sup>	0.91 (2)	1.83 (2)	2.7284 (18)	169 (2)
O2 <i>W</i> —H1 <i>W</i> 2 $\cdots$ N4 <sup>iii</sup>	0.849 (19)	1.978 (19)	2.8147 (19)	169 (2)
O2 <i>W</i> —H2 <i>W</i> 2 $\cdots$ O2 <sup>i</sup>	0.87 (2)	1.98 (2)	2.8460 (17)	172 (2)
C17—H17 <i>B</i> $\cdots$ O1 <i>W</i> <sup>iv</sup>	0.99	2.49	3.3785 (16)	149
C19—H19 <i>B</i> $\cdots$ O1 <i>W</i> <sup>iv</sup>	0.99	2.51	3.3799 (19)	147
C10—H10 <i>A</i> $\cdots$ Cg1 <sup>v</sup>	0.95	2.86	3.4875 (14)	125

Symmetry codes: (i)  $x, y, z-1$ ; (ii)  $-x+1, y+1/2, -z+1/2$ ; (iii)  $x+1, -y+3/2, z-1/2$ ; (iv)  $x, -y+3/2, z+1/2$ ; (v)  $-x+1, -y+2, -z+2$ .