

Acta Crystallographica Section E

Structure Reports

Online

ISSN 1600-5368

## Eucomic acid methanol monosolvate

Guo-Qiang Li,<sup>a</sup> Yao-Lan Li,<sup>a</sup> Guo-Cai Wang,<sup>a\*</sup> Zhi-Hong Liang<sup>b</sup> and Ren-Wang Jiang<sup>a</sup>

<sup>a</sup>Guangdong Province Key Laboratory of Pharmacodynamic Constituents of Traditional Chinese Medicine and New Drugs Research, Institute of Traditional Chinese Medicine and Natural Products, Jinan University, Guangzhou 510632, People's Republic of China, and <sup>b</sup>Analysis and Testing Center, Jinan University, Guangzhou 510632, People's Republic of China

Correspondence e-mail: trwjjiang@jnu.edu.cn

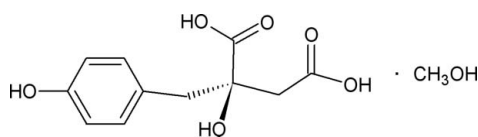
Received 30 June 2011; accepted 25 July 2011

Key indicators: single-crystal X-ray study;  $T = 293$  K; mean  $\sigma(\text{C}-\text{C}) = 0.003$  Å;  $R$  factor = 0.030;  $wR$  factor = 0.081; data-to-parameter ratio = 7.9.

In the crystal structure of the title compound [systematic name: 2-hydroxy-2-(4-hydroxybenzyl)butanedioic acid methanol monosolvate],  $\text{C}_{11}\text{H}_{12}\text{O}_6 \cdot \text{CH}_3\text{OH}$ , the dihedral angles between the planes of the carboxyl groups and the benzene ring are 51.23 (9) and 87.97 (9)°. Intermolecular O—H...O hydrogen-bonding interactions involving the hydroxy and carboxylic acid groups and the methanol solvent molecule give a three-dimensional structure.

### Related literature

For general background to natural existence and related structures, see: Jiang *et al.* (2006); Li *et al.* (2008). For the absolute configuration of eucomic acid, see: Heller & Tamm (1974).



### Experimental

#### Crystal data

$\text{C}_{11}\text{H}_{12}\text{O}_6 \cdot \text{CH}_4\text{O}$   
 $M_r = 272.25$

Orthorhombic,  $P2_12_12_1$   
 $a = 5.8970$  (2) Å

$b = 7.2088$  (3) Å  
 $c = 31.3290$  (4) Å  
 $V = 1331.81$  (7) Å<sup>3</sup>  
 $Z = 4$

Mo  $K\alpha$  radiation  
 $\mu = 0.11$  mm<sup>-1</sup>  
 $T = 293$  K  
 $0.60 \times 0.20 \times 0.10$  mm

#### Data collection

Bruker SMART 1000 CCD diffractometer  
7417 measured reflections

1408 independent reflections  
1184 reflections with  $I > 2\sigma(I)$   
 $R_{\text{int}} = 0.036$

#### Refinement

$R[F^2 > 2\sigma(F^2)] = 0.030$   
 $wR(F^2) = 0.081$   
 $S = 1.05$   
1408 reflections

178 parameters  
H-atom parameters constrained  
 $\Delta\rho_{\text{max}} = 0.18$  e Å<sup>-3</sup>  
 $\Delta\rho_{\text{min}} = -0.19$  e Å<sup>-3</sup>

Table 1

Hydrogen-bond geometry (Å, °).

| D—H...A                   | D—H  | H...A | D...A     | D—H...A |
|---------------------------|------|-------|-----------|---------|
| O1—H1...O3 <sup>i</sup>   | 0.82 | 1.97  | 2.781 (3) | 170     |
| O2—H2...O1 <sup>ii</sup>  | 0.82 | 2.33  | 2.861 (2) | 123     |
| O4—H4...O2 <sup>iii</sup> | 0.82 | 1.85  | 2.639 (2) | 162     |
| O6—H6...O7                | 0.82 | 1.76  | 2.575 (4) | 170     |
| O7—H7...O5 <sup>iv</sup>  | 0.82 | 1.93  | 2.694 (4) | 156     |

Symmetry codes: (i)  $-x + 1, y - \frac{1}{2}, -z + \frac{1}{2}$ ; (ii)  $-x, y + \frac{1}{2}, -z + \frac{1}{2}$ ; (iii)  $x + 1, y, z$ ; (iv)  $x - \frac{1}{2}, -y + \frac{3}{2}, -z + 1$ .

Data collection: SMART (Bruker, 1998); cell refinement: SMART and SAINT (Bruker, 1998); data reduction: XPREP in SHELXTL (Sheldrick, 2008); program(s) used to solve structure: SHELXS97 (Sheldrick, 2008); program(s) used to refine structure: SHELXL97 (Sheldrick, 2008); molecular graphics: OLEX2 (Dolomanov *et al.*, 2009); software used to prepare material for publication: OLEX2.

This work was supported by a grant from the Natural Science Fund of Guangdong Province (grant No. 07005971) and by the Guangdong High Level Talent Scheme (to RWJ).

Supplementary data and figures for this paper are available from the IUCr electronic archives (Reference: ZS2127).

### References

- Bruker (1998). SMART and SAINT. Bruker AXS Inc., Madison, Wisconsin, USA.  
Dolomanov, O. V., Bourhis, L. J., Gildea, R. J., Howard, J. A. K. & Puschmann, H. (2009). *J. Appl. Cryst.* **42**, 339–341.  
Heller, W. & Tamm, C. (1974). *Helv. Chim. Acta*, **57**, 1766–1784.  
Jiang, J. Q., Li, Y. F., Chen, Z., Min, Z. D. & Lou, F. C. (2006). *Steroids*, **71**, 1073–1077.  
Li, L., Zhou, G.-X. & Jiang, R.-W. (2008). *Acta Cryst.* **E64**, o1354.  
Sheldrick, G. M. (2008). *Acta Cryst.* **A64**, 112–122.

## supporting information

*Acta Cryst.* (2011). E67, o2192 [doi:10.1107/S1600536811030017]

## Eucomic acid methanol monosolvate

Guo-Qiang Li, Yao-Lan Li, Guo-Cai Wang, Zhi-Hong Liang and Ren-Wang Jiang

### S1. Comment

The title compound  $C_{11}H_{12}O_6 \cdot CH_3OH$  (Fig. 1) is the monomethanol solvate of eucomic acid [systematic name: 2-hydroxy-2-(4-hydroxybenzyl)butanedioic acid], and was originally isolated from the stems of *Opuntia dillenii* (Jiang *et al.*, 2006) and the absolute configuration was established by synthesis (Heller & Tamm, 1974). With the present compound, which was isolated from the stems of the related species *Opuntia vulgaris*, the dihedral angle between the plane of the benzene ring and that of the carboxylic group at C8 is  $51.23(9)^\circ$ , and  $87.97(9)^\circ$  with that at C9. These values are similar to those in the methyl eucomate structure (Li *et al.*, 2008).

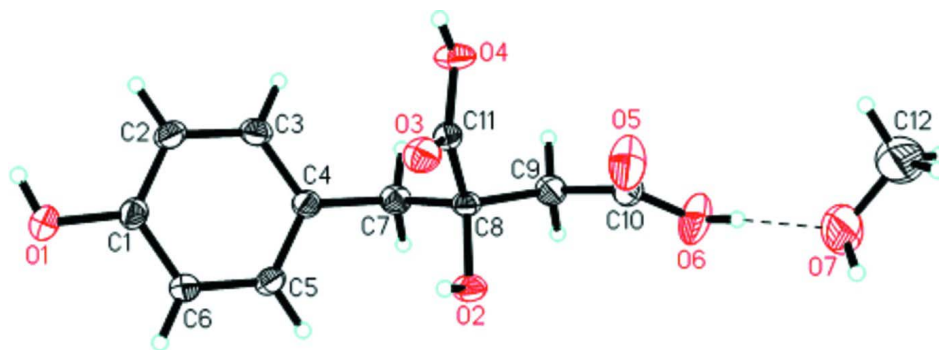
Intermolecular O—H $\cdots$ O hydrogen-bonding interactions involving the hydroxy and carboxylic acid groups and the methanol molecule (Table 1) give a three-dimensional structure. A short intramolecular interaction between the C8 hydroxy group and a carboxyl O acceptor is also present [O2—H2 $\cdots$ O3 =  $2.655(2)$  Å;  $\angle$ O—H $\cdots$ O =  $117^\circ$ ].

### S2. Experimental

The title compound was isolated from the stems of *Opuntia vulgaris*, 1 kg of which was extracted with 95% ethanol at room temperature, then concentrated by rotary evaporator. The crude extract was suspended in distilled water and partitioned with petroleum ether, ethyl acetate and n-butanol. The title compound (22 mg) was isolated from the n-butanol fraction using silica-gel column chromatography. Crystals of the title compound were obtained after slow evaporation of a methanolic solution at room temperature.

### S3. Refinement

The C-bound H atoms were positioned geometrically and were included in the refinement in the riding-model approximation, with C—H =  $0.96$  Å (CH<sub>3</sub>) and  $U_{iso}(H) = 1.5U_{eq}(C)$ ;  $0.97$  Å (CH<sub>2</sub>) and  $U_{iso}(H) = 1.2U_{eq}(C)$ ;  $0.93$  Å (aryl H) and  $U_{iso}(H) = 1.2U_{eq}(C)$ ; O—H =  $0.82$  Å and  $U_{iso}(H) = 1.5U_{eq}(O)$ . The absolute configuration determined by Heller & Tamm (1974) by analysis was invoked, having (for the numbering scheme used in this determination) C8(*R*). Friedel pairs in the data set (934) were merged.

**Figure 1**

The molecular structure of the title compound showing 30% probability displacement ellipsoids and the atom-numbering scheme. The intermolecular hydrogen bond is shown as a dashed line.

### 2-hydroxy-2-(4-hydroxybenzyl)butanedioic acid methanol monosolvate

#### Crystal data

$C_{11}H_{12}O_6 \cdot CH_4O$

$M_r = 272.25$

Orthorhombic,  $P2_12_12_1$

$a = 5.8970$  (2) Å

$b = 7.2088$  (3) Å

$c = 31.3290$  (4) Å

$V = 1331.81$  (7) Å<sup>3</sup>

$Z = 4$

$F(000) = 576$

$D_x = 1.358$  Mg m<sup>-3</sup>

Mo  $K\alpha$  radiation,  $\lambda = 0.71073$  Å

Cell parameters from 2341 reflections

$\theta = 1.3$ – $25.0^\circ$

$\mu = 0.11$  mm<sup>-1</sup>

$T = 293$  K

Prism, colourless

$0.60 \times 0.20 \times 0.10$  mm

#### Data collection

Bruker SMART 1000 CCD

diffractometer

Radiation source: fine-focus sealed tube

Graphite monochromator

$\omega$  scans

7417 measured reflections

1408 independent reflections

1184 reflections with  $I > 2\sigma(I)$

$R_{int} = 0.036$

$\theta_{max} = 25.0^\circ$ ,  $\theta_{min} = 1.3^\circ$

$h = -7 \rightarrow 6$

$k = -8 \rightarrow 6$

$l = -36 \rightarrow 37$

#### Refinement

Refinement on  $F^2$

Least-squares matrix: full

$R[F^2 > 2\sigma(F^2)] = 0.030$

$wR(F^2) = 0.081$

$S = 1.05$

1408 reflections

178 parameters

0 restraints

Primary atom site location: structure-invariant

direct methods

Secondary atom site location: difference Fourier map

Hydrogen site location: inferred from neighbouring sites

H-atom parameters constrained

$w = 1/[\sigma^2(F_o^2) + (0.0459P)^2 + 0.0811P]$

where  $P = (F_o^2 + 2F_c^2)/3$

$(\Delta/\sigma)_{max} < 0.001$

$\Delta\rho_{max} = 0.18$  e Å<sup>-3</sup>

$\Delta\rho_{min} = -0.19$  e Å<sup>-3</sup>

*Special details*

**Geometry.** All e.s.d.'s (except the e.s.d. in the dihedral angle between two l.s. planes) are estimated using the full covariance matrix. The cell e.s.d.'s are taken into account individually in the estimation of e.s.d.'s in distances, angles and torsion angles; correlations between e.s.d.'s in cell parameters are only used when they are defined by crystal symmetry. An approximate (isotropic) treatment of cell e.s.d.'s is used for estimating e.s.d.'s involving l.s. planes.

**Refinement.** Refinement of  $F^2$  against ALL reflections. The weighted  $R$ -factor  $wR$  and goodness of fit  $S$  are based on  $F^2$ , conventional  $R$ -factors  $R$  are based on  $F$ , with  $F$  set to zero for negative  $F^2$ . The threshold expression of  $F^2 > \sigma(F^2)$  is used only for calculating  $R$ -factors(gt) *etc.* and is not relevant to the choice of reflections for refinement.  $R$ -factors based on  $F^2$  are statistically about twice as large as those based on  $F$ , and  $R$ -factors based on ALL data will be even larger.

*Fractional atomic coordinates and isotropic or equivalent isotropic displacement parameters ( $\text{\AA}^2$ )*

|      | $x$         | $y$        | $z$          | $U_{\text{iso}}^*/U_{\text{eq}}$ |
|------|-------------|------------|--------------|----------------------------------|
| O4   | 0.5195 (3)  | 0.2588 (3) | 0.38870 (6)  | 0.0496 (5)                       |
| H4   | 0.6358      | 0.3081     | 0.3799       | 0.074*                           |
| O2   | -0.0623 (2) | 0.3712 (2) | 0.37354 (5)  | 0.0399 (4)                       |
| H2   | -0.0175     | 0.4478     | 0.3561       | 0.060*                           |
| O1   | 0.2583 (3)  | 0.1398 (3) | 0.18267 (5)  | 0.0503 (5)                       |
| H1   | 0.3811      | 0.0962     | 0.1756       | 0.075*                           |
| O3   | 0.3496 (3)  | 0.4842 (3) | 0.35125 (5)  | 0.0465 (5)                       |
| C5   | -0.0136 (4) | 0.1541 (3) | 0.28608 (7)  | 0.0390 (6)                       |
| H5   | -0.1536     | 0.1885     | 0.2972       | 0.047*                           |
| C4   | 0.1514 (4)  | 0.0859 (3) | 0.31338 (7)  | 0.0346 (5)                       |
| C1   | 0.2305 (4)  | 0.1201 (3) | 0.22599 (7)  | 0.0373 (5)                       |
| C8   | 0.1204 (4)  | 0.2530 (3) | 0.38545 (7)  | 0.0337 (5)                       |
| C3   | 0.3574 (4)  | 0.0333 (3) | 0.29570 (7)  | 0.0401 (6)                       |
| H3   | 0.4705      | -0.0139    | 0.3133       | 0.048*                           |
| O6   | -0.0015 (5) | 0.3883 (3) | 0.49413 (6)  | 0.0750 (6)                       |
| H6   | 0.0124      | 0.4873     | 0.5068       | 0.112*                           |
| C6   | 0.0240 (4)  | 0.1722 (3) | 0.24286 (7)  | 0.0380 (6)                       |
| H6A  | -0.0889     | 0.2193     | 0.2252       | 0.046*                           |
| O5   | 0.2358 (4)  | 0.5185 (3) | 0.44936 (6)  | 0.0769 (7)                       |
| C11  | 0.3419 (4)  | 0.3486 (4) | 0.37382 (7)  | 0.0361 (5)                       |
| C2   | 0.3976 (4)  | 0.0497 (4) | 0.25230 (7)  | 0.0420 (6)                       |
| H2A  | 0.5365      | 0.0136     | 0.2409       | 0.050*                           |
| C7   | 0.1074 (4)  | 0.0688 (3) | 0.36073 (7)  | 0.0397 (6)                       |
| H7A  | 0.2170      | -0.0167    | 0.3728       | 0.048*                           |
| H7B  | -0.0421     | 0.0156     | 0.3649       | 0.048*                           |
| C10  | 0.1187 (4)  | 0.3916 (4) | 0.45945 (7)  | 0.0449 (6)                       |
| C9   | 0.0974 (4)  | 0.2185 (4) | 0.43323 (7)  | 0.0412 (6)                       |
| H9A  | -0.0491     | 0.1622     | 0.4388       | 0.049*                           |
| H9B  | 0.2134      | 0.1311     | 0.4421       | 0.049*                           |
| O7   | 0.0058 (6)  | 0.6834 (4) | 0.54040 (10) | 0.1137 (10)                      |
| H7   | -0.0761     | 0.7730     | 0.5357       | 0.171*                           |
| C12  | 0.1744 (7)  | 0.7337 (6) | 0.56770 (13) | 0.1048 (14)                      |
| H12A | 0.3167      | 0.6874     | 0.5573       | 0.157*                           |
| H12B | 0.1446      | 0.6828     | 0.5954       | 0.157*                           |
| H12C | 0.1808      | 0.8666     | 0.5696       | 0.157*                           |

*Atomic displacement parameters (Å<sup>2</sup>)*

|     | $U^{11}$    | $U^{22}$    | $U^{33}$    | $U^{12}$     | $U^{13}$     | $U^{23}$     |
|-----|-------------|-------------|-------------|--------------|--------------|--------------|
| O4  | 0.0228 (8)  | 0.0617 (12) | 0.0644 (12) | -0.0021 (9)  | -0.0012 (8)  | 0.0092 (9)   |
| O2  | 0.0262 (8)  | 0.0491 (10) | 0.0446 (9)  | -0.0002 (8)  | 0.0008 (7)   | 0.0065 (8)   |
| O1  | 0.0462 (10) | 0.0669 (13) | 0.0378 (9)  | 0.0088 (10)  | 0.0061 (8)   | -0.0085 (9)  |
| O3  | 0.0389 (10) | 0.0530 (11) | 0.0474 (10) | -0.0084 (9)  | 0.0064 (8)   | 0.0099 (9)   |
| C5  | 0.0297 (12) | 0.0451 (14) | 0.0421 (13) | 0.0043 (12)  | 0.0037 (10)  | -0.0067 (11) |
| C4  | 0.0293 (11) | 0.0371 (12) | 0.0374 (12) | -0.0031 (11) | -0.0008 (10) | -0.0057 (10) |
| C1  | 0.0362 (12) | 0.0398 (13) | 0.0360 (12) | -0.0020 (11) | 0.0037 (10)  | -0.0075 (11) |
| C8  | 0.0232 (11) | 0.0434 (13) | 0.0345 (12) | 0.0004 (11)  | -0.0002 (9)  | 0.0034 (10)  |
| C3  | 0.0312 (13) | 0.0442 (14) | 0.0449 (13) | 0.0002 (12)  | -0.0058 (11) | -0.0028 (11) |
| O6  | 0.0911 (16) | 0.0758 (14) | 0.0580 (12) | -0.0167 (15) | 0.0377 (12)  | -0.0163 (10) |
| C6  | 0.0336 (13) | 0.0430 (13) | 0.0375 (13) | 0.0072 (12)  | -0.0018 (10) | -0.0022 (10) |
| O5  | 0.0892 (16) | 0.0762 (15) | 0.0653 (12) | -0.0429 (13) | 0.0272 (12)  | -0.0222 (11) |
| C11 | 0.0272 (12) | 0.0485 (15) | 0.0325 (12) | -0.0041 (12) | 0.0018 (10)  | -0.0049 (12) |
| C2  | 0.0287 (12) | 0.0488 (14) | 0.0485 (14) | 0.0006 (12)  | 0.0033 (11)  | -0.0114 (12) |
| C7  | 0.0344 (13) | 0.0416 (13) | 0.0430 (13) | -0.0068 (12) | 0.0000 (10)  | 0.0015 (11)  |
| C10 | 0.0399 (14) | 0.0588 (16) | 0.0361 (13) | -0.0049 (14) | 0.0047 (11)  | 0.0011 (12)  |
| C9  | 0.0361 (13) | 0.0501 (14) | 0.0373 (13) | -0.0072 (12) | 0.0027 (10)  | 0.0033 (11)  |
| O7  | 0.134 (2)   | 0.0946 (19) | 0.112 (2)   | 0.0550 (19)  | -0.042 (2)   | -0.0518 (17) |
| C12 | 0.101 (3)   | 0.096 (3)   | 0.118 (3)   | 0.032 (3)    | -0.028 (3)   | -0.024 (3)   |

*Geometric parameters (Å, °)*

|           |           |           |             |
|-----------|-----------|-----------|-------------|
| O4—H4     | 0.8200    | C3—H3     | 0.9300      |
| O4—C11    | 1.317 (3) | C3—C2     | 1.385 (3)   |
| O2—H2     | 0.8200    | O6—H6     | 0.8200      |
| O2—C8     | 1.424 (3) | O6—C10    | 1.298 (3)   |
| O1—H1     | 0.8200    | C6—H6A    | 0.9300      |
| O1—C1     | 1.374 (3) | O5—C10    | 1.189 (3)   |
| O3—C11    | 1.207 (3) | C2—H2A    | 0.9300      |
| C5—H5     | 0.9300    | C7—H7A    | 0.9700      |
| C5—C4     | 1.386 (3) | C7—H7B    | 0.9700      |
| C5—C6     | 1.378 (3) | C10—C9    | 1.499 (4)   |
| C4—C3     | 1.388 (3) | C9—H9A    | 0.9700      |
| C4—C7     | 1.511 (3) | C9—H9B    | 0.9700      |
| C1—C6     | 1.380 (3) | O7—H7     | 0.8200      |
| C1—C2     | 1.381 (3) | O7—C12    | 1.361 (4)   |
| C8—C11    | 1.521 (3) | C12—H12A  | 0.9600      |
| C8—C7     | 1.539 (3) | C12—H12B  | 0.9600      |
| C8—C9     | 1.523 (3) | C12—H12C  | 0.9600      |
| C11—O4—H4 | 109.5     | O3—C11—C8 | 122.6 (2)   |
| C8—O2—H2  | 109.5     | C1—C2—C3  | 119.7 (2)   |
| C1—O1—H1  | 109.5     | C1—C2—H2A | 120.2       |
| C4—C5—H5  | 119.1     | C3—C2—H2A | 120.2       |
| C6—C5—H5  | 119.1     | C4—C7—C8  | 114.53 (19) |

|              |             |               |              |
|--------------|-------------|---------------|--------------|
| C6—C5—C4     | 121.8 (2)   | C4—C7—H7A     | 108.6        |
| C5—C4—C3     | 117.7 (2)   | C4—C7—H7B     | 108.6        |
| C5—C4—C7     | 120.9 (2)   | C8—C7—H7A     | 108.6        |
| C3—C4—C7     | 121.3 (2)   | C8—C7—H7B     | 108.6        |
| O1—C1—C6     | 117.1 (2)   | H7A—C7—H7B    | 107.6        |
| O1—C1—C2     | 122.8 (2)   | O6—C10—C9     | 113.4 (2)    |
| C6—C1—C2     | 120.1 (2)   | O5—C10—O6     | 123.6 (2)    |
| O2—C8—C11    | 108.42 (17) | O5—C10—C9     | 122.9 (2)    |
| O2—C8—C7     | 110.29 (18) | C8—C9—H9A     | 108.9        |
| O2—C8—C9     | 106.74 (18) | C8—C9—H9B     | 108.9        |
| C11—C8—C7    | 108.24 (18) | C10—C9—C8     | 113.2 (2)    |
| C11—C8—C9    | 112.71 (18) | C10—C9—H9A    | 108.9        |
| C9—C8—C7     | 110.41 (19) | C10—C9—H9B    | 108.9        |
| C4—C3—H3     | 119.4       | H9A—C9—H9B    | 107.7        |
| C2—C3—C4     | 121.2 (2)   | C12—O7—H7     | 109.5        |
| C2—C3—H3     | 119.4       | O7—C12—H12A   | 109.5        |
| C10—O6—H6    | 109.5       | O7—C12—H12B   | 109.5        |
| C5—C6—C1     | 119.5 (2)   | O7—C12—H12C   | 109.5        |
| C5—C6—H6A    | 120.2       | H12A—C12—H12B | 109.5        |
| C1—C6—H6A    | 120.2       | H12A—C12—H12C | 109.5        |
| O4—C11—C8    | 112.08 (19) | H12B—C12—H12C | 109.5        |
| O3—C11—O4    | 125.1 (2)   |               |              |
| O2—C8—C11—O4 | 171.94 (19) | C6—C5—C4—C7   | 179.4 (2)    |
| O2—C8—C11—O3 | -12.4 (3)   | C6—C1—C2—C3   | -0.5 (4)     |
| O2—C8—C7—C4  | 68.0 (2)    | O5—C10—C9—C8  | -32.1 (4)    |
| O2—C8—C9—C10 | -62.6 (2)   | C11—C8—C7—C4  | -50.5 (3)    |
| O1—C1—C6—C5  | 179.5 (2)   | C11—C8—C9—C10 | 56.3 (3)     |
| O1—C1—C2—C3  | -179.8 (2)  | C2—C1—C6—C5   | 0.2 (4)      |
| C5—C4—C3—C2  | 0.6 (3)     | C7—C4—C3—C2   | -179.7 (2)   |
| C5—C4—C7—C8  | -77.1 (3)   | C7—C8—C11—O4  | -68.4 (2)    |
| C4—C5—C6—C1  | 0.5 (4)     | C7—C8—C11—O3  | 107.2 (2)    |
| C4—C3—C2—C1  | 0.1 (4)     | C7—C8—C9—C10  | 177.5 (2)    |
| C3—C4—C7—C8  | 103.2 (3)   | C9—C8—C11—O4  | 54.0 (3)     |
| O6—C10—C9—C8 | 148.3 (2)   | C9—C8—C11—O3  | -130.3 (2)   |
| C6—C5—C4—C3  | -0.9 (3)    | C9—C8—C7—C4   | -174.29 (19) |

Hydrogen-bond geometry ( $\text{\AA}$ ,  $^\circ$ )

| $D-H\cdots A$                    | $D-H$ | $H\cdots A$ | $D\cdots A$ | $D-H\cdots A$ |
|----------------------------------|-------|-------------|-------------|---------------|
| O1—H1 $\cdots$ O3 <sup>i</sup>   | 0.82  | 1.97        | 2.781 (3)   | 170           |
| O2—H2 $\cdots$ O3                | 0.82  | 2.19        | 2.655 (2)   | 116           |
| O2—H2 $\cdots$ O1 <sup>ii</sup>  | 0.82  | 2.33        | 2.861 (2)   | 123           |
| O4—H4 $\cdots$ O2 <sup>iii</sup> | 0.82  | 1.85        | 2.639 (2)   | 162           |
| O6—H6 $\cdots$ O7                | 0.82  | 1.76        | 2.575 (4)   | 170           |
| O7—H7 $\cdots$ O5 <sup>iv</sup>  | 0.82  | 1.93        | 2.694 (4)   | 156           |

Symmetry codes: (i)  $-x+1, y-1/2, -z+1/2$ ; (ii)  $-x, y+1/2, -z+1/2$ ; (iii)  $x+1, y, z$ ; (iv)  $x-1/2, -y+3/2, -z+1$ .