

Acta Crystallographica Section E

Structure Reports

Online

ISSN 1600-5368

(E)-N'-(2-Methoxybenzylidene)-3-nitrobenzohydrazide

Jin-Wu Guo, Jun-Ying Ma* and Chao-Wei Sun

 Chemical Engineering & Pharmaceuticals College, Henan University of Science and Technology, Luoyang Henan 471003, People's Republic of China
 Correspondence e-mail: junying_ma@163.com

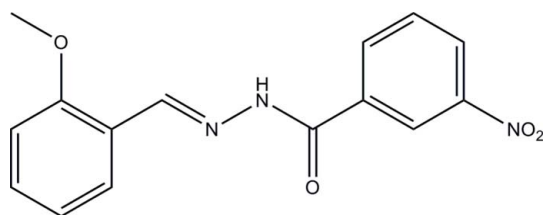
Received 22 June 2011; accepted 28 June 2011

 Key indicators: single-crystal X-ray study; $T = 298$ K; mean $\sigma(\text{C}-\text{C}) = 0.005$ Å; R factor = 0.067; wR factor = 0.160; data-to-parameter ratio = 15.7.

In the title compound, $\text{C}_{15}\text{H}_{13}\text{N}_3\text{O}_4$, the two substituted benzene rings form a dihedral angle of $10.9(3)^\circ$. In the crystal, intermolecular $\text{C}-\text{H}\cdots\text{O}$ and $\text{N}-\text{H}\cdots\text{O}$ hydrogen bonds link molecules into chains running parallel to $[101]$.

Related literature

For background to the binding properties and biological activity of condensation products of aldehydes with benzohydrazides, see: Sanchez-Lozano *et al.* (2011); Wang (2011); Cui *et al.* (2011); Zhu (2011); Peng (2011). For related structures, see: Hashemian *et al.* (2011); Shalash *et al.* (2010).



Experimental

Crystal data

 $\text{C}_{15}\text{H}_{13}\text{N}_3\text{O}_4$
 $M_r = 299.28$
 Monoclinic, $P2_1/n$
 $a = 6.9886(13)$ Å

 $b = 29.543(3)$ Å
 $c = 7.4163(14)$ Å
 $\beta = 109.229(2)^\circ$
 $V = 1445.8(4)$ Å³
 $Z = 4$
 Mo $K\alpha$ radiation
 $\mu = 0.10$ mm⁻¹
 $T = 298$ K
 $0.20 \times 0.17 \times 0.13$ mm

Data collection

 Bruker SMART APEX CCD area-detector diffractometer
 Absorption correction: multi-scan (SADABS; Bruker, 2007)
 $T_{\min} = 0.980$, $T_{\max} = 0.987$

 11773 measured reflections
 3140 independent reflections
 1547 reflections with $I > 2\sigma(I)$
 $R_{\text{int}} = 0.066$

Refinement

 $R[F^2 > 2\sigma(F^2)] = 0.067$
 $wR(F^2) = 0.160$
 $S = 1.02$
 3140 reflections

 200 parameters
 H-atom parameters constrained
 $\Delta\rho_{\max} = 0.27$ e Å⁻³
 $\Delta\rho_{\min} = -0.20$ e Å⁻³

Table 1

Hydrogen-bond geometry (Å, °).

$D-\text{H}\cdots A$	$D-\text{H}$	$\text{H}\cdots A$	$D\cdots A$	$D-\text{H}\cdots A$
$\text{N2}-\text{H2}\cdots\text{O2}^i$	0.86	2.03	2.856 (3)	162
$\text{C8}-\text{H8}\cdots\text{O2}^i$	0.93	2.47	3.231 (3)	139

 Symmetry code: (i) $x + \frac{1}{2}, -y + \frac{1}{2}, z + \frac{1}{2}$.

Data collection: SMART (Bruker, 2007); cell refinement: SAINT (Bruker, 2007); data reduction: SAINT; program(s) used to solve structure: SHELXS97 (Sheldrick, 2008); program(s) used to refine structure: SHELXL97 (Sheldrick, 2008); molecular graphics: SHELXTL (Sheldrick, 2008); software used to prepare material for publication: SHELXTL.

Financial support from Henan University of Science and Technology is gratefully acknowledged.

Supplementary data and figures for this paper are available from the IUCr electronic archives (Reference: RZ2618).

References

- Bruker (2007). SMART, SAINT and SADABS. Bruker AXS Inc., Madison, Wisconsin, USA.
- Cui, Y.-M., Cai, Y.-J. & Chen, W. (2011). *J. Coord. Chem.* **64**, 1385–1392.
- Hashemian, S., Ghaeinee, V. & Notash, B. (2011). *Acta Cryst.* **E67**, o171.
- Peng, S.-J. (2011). *J. Chem. Crystallogr.* **41**, 280–285.
- Sanchez-Lozano, M., Vazquez-Lopez, E. M., Hermida-Ramon, J. M. & Estevez, C. M. (2011). *Polyhedron*, **30**, 953–962.
- Shalash, M., Sallin, A., Adnan, R., Yeap, C. S. & Fun, H.-K. (2010). *Acta Cryst.* **E66**, o3126–o3127.
- Sheldrick, G. M. (2008). *Acta Cryst.* **A64**, 112–122.
- Wang, N. (2011). *Synth. React. Inorg. Met.-Org. Nano-Met. Chem.* **41**, 378–383.
- Zhu, H.-Y. (2011). *Chin. J. Struct. Chem.* **30**, 724–730.

supporting information

Acta Cryst. (2011). E67, o1895 [doi:10.1107/S1600536811025542]

(*E*)-*N'*-(2-Methoxybenzylidene)-3-nitrobenzohydrazide

Jin-Wu Guo, Jun-Ying Ma and Chao-Wei Sun

S1. Comment

The compounds derived from the condensation reaction of aldehydes with benzohydrazides play a vital role in coordination chemistry due to their metal binding property (Sanchez-Lozano *et al.*, 2011; Wang, 2011; Cui *et al.*, 2011). Moreover, most of such compounds possess effective biological activity (Zhu, 2011; Peng, 2011). In recent years, a number of such compounds have been reported (Hashemian *et al.*, 2011; Shalash *et al.*, 2010). In this paper, the title new compound, (*E*)-*N'*-(2-Methoxybenzylidene)-3-nitrobenzohydrazide, (I), is reported.

The molecular structure of (I) is shown in Fig. 1. The bond lengths in (I) are normal and comparable with those observed in the reported structures cited above. The two substituted benzene rings form a dihedral angle of 10.9 (3)°. In the crystal, intermolecular C–H···O and N–H···O hydrogen bonds link molecules into one-dimensional chains parallel to the [101] direction (Fig. 2, Table 1).

S2. Experimental

2-Methoxybenzaldehyde (0.136 g, 1 mmol), 3-nitrobenzohydrazide (0.181 g, 1 mmol), and a few drops of acetic acid were mixed in methanol (30 ml). The solution was magnetic stirred at ambient temperature for 10 min until it turns to yellow. The solution was slowly evaporated in open air to give needle-shaped pale yellow single crystals.

S3. Refinement

H atoms were placed in idealized positions (C–H = 0.93–0.96 Å, N–H = 0.86 Å), and refined as riding, with $U_{\text{iso}}(\text{H}) = 1.2U_{\text{eq}}(\text{C}, \text{N})$ or $1.5U_{\text{eq}}(\text{C})$ for methyl H atoms.

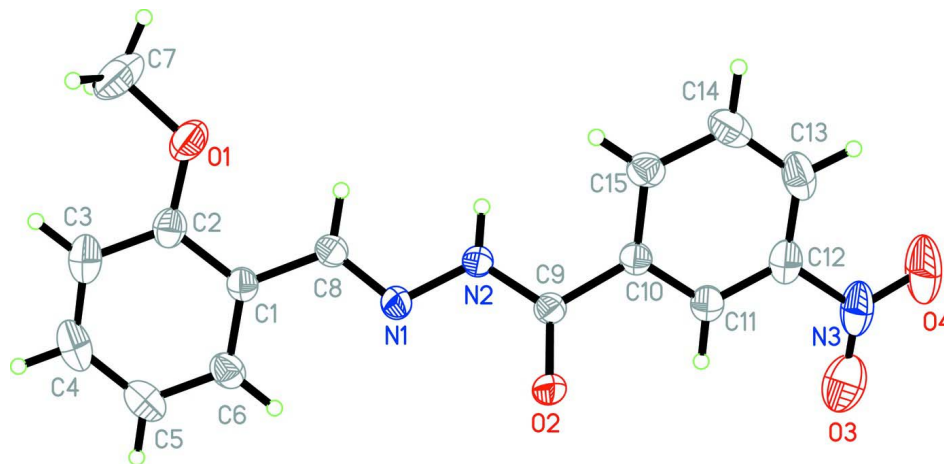
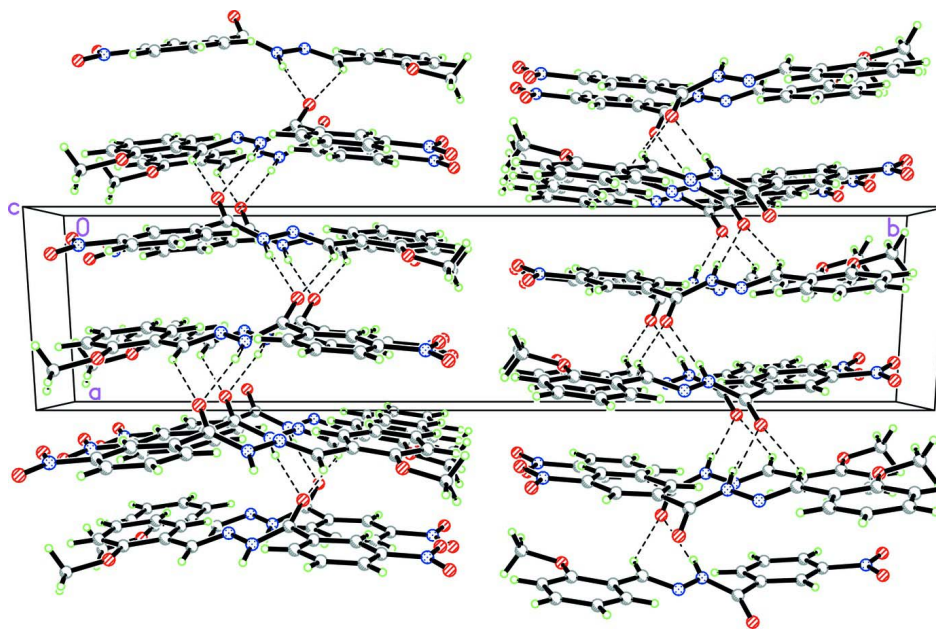


Figure 1

The molecular structure of the title compound with displacement ellipsoids shown at 30% probability level.

**Figure 2**

Packing diagram of the title compound, viewed along the *c* axis. Hydrogen bonds are indicated by dashed lines.

(*E*)-*N'*-(2-Methoxybenzylidene)-3-nitrobenzohydrazide

Crystal data

$C_{15}H_{13}N_3O_4$

$M_r = 299.28$

Monoclinic, $P2_1/n$

Hall symbol: $-P\ 2_1n$

$a = 6.9886\ (13)\ \text{\AA}$

$b = 29.543\ (3)\ \text{\AA}$

$c = 7.4163\ (14)\ \text{\AA}$

$\beta = 109.229\ (2)^\circ$

$V = 1445.8\ (4)\ \text{\AA}^3$

$Z = 4$

$F(000) = 624$

$D_x = 1.375\ \text{Mg m}^{-3}$

Mo $K\alpha$ radiation, $\lambda = 0.71073\ \text{\AA}$

Cell parameters from 1029 reflections

$\theta = 2.7\text{--}24.6^\circ$

$\mu = 0.10\ \text{mm}^{-1}$

$T = 298\ \text{K}$

Needle fragment, pale yellow

$0.20 \times 0.17 \times 0.13\ \text{mm}$

Data collection

Bruker SMART APEX CCD area-detector
diffractometer

Radiation source: fine-focus sealed tube

Graphite monochromator

ω scans

Absorption correction: multi-scan

(*SADABS*; Bruker, 2007)

$T_{\min} = 0.980$, $T_{\max} = 0.987$

11773 measured reflections

3140 independent reflections

1547 reflections with $I > 2\sigma(I)$

$R_{\text{int}} = 0.066$

$\theta_{\max} = 27.0^\circ$, $\theta_{\min} = 2.8^\circ$

$h = -7 \rightarrow 8$

$k = -37 \rightarrow 37$

$l = -9 \rightarrow 9$

Refinement

Refinement on F^2

Least-squares matrix: full

$R[F^2 > 2\sigma(F^2)] = 0.067$

$wR(F^2) = 0.160$

$S = 1.02$

3140 reflections

200 parameters

0 restraints

Primary atom site location: structure-invariant
direct methods

Secondary atom site location: difference Fourier
map

Hydrogen site location: inferred from
neighbouring sites
H-atom parameters constrained

$$w = 1/[\sigma^2(F_o^2) + (0.0565P)^2 + 0.2817P]$$

where $P = (F_o^2 + 2F_c^2)/3$
 $(\Delta/\sigma)_{\max} < 0.001$
 $\Delta\rho_{\max} = 0.27 \text{ e } \text{\AA}^{-3}$
 $\Delta\rho_{\min} = -0.20 \text{ e } \text{\AA}^{-3}$

Special details

Geometry. All e.s.d.'s (except the e.s.d. in the dihedral angle between two l.s. planes) are estimated using the full covariance matrix. The cell e.s.d.'s are taken into account individually in the estimation of e.s.d.'s in distances, angles and torsion angles; correlations between e.s.d.'s in cell parameters are only used when they are defined by crystal symmetry. An approximate (isotropic) treatment of cell e.s.d.'s is used for estimating e.s.d.'s involving l.s. planes.

Refinement. Refinement of F^2 against ALL reflections. The weighted R -factor wR and goodness of fit S are based on F^2 , conventional R -factors R are based on F , with F set to zero for negative F^2 . The threshold expression of $F^2 > \sigma(F^2)$ is used only for calculating R -factors(gt) *etc.* and is not relevant to the choice of reflections for refinement. R -factors based on F^2 are statistically about twice as large as those based on F , and R -factors based on ALL data will be even larger.

Fractional atomic coordinates and isotropic or equivalent isotropic displacement parameters (\AA^2)

	<i>x</i>	<i>y</i>	<i>z</i>	$U_{\text{iso}}^*/U_{\text{eq}}$
N1	0.1106 (3)	0.28532 (7)	0.7046 (3)	0.0472 (6)
N2	0.1501 (3)	0.25598 (7)	0.8592 (3)	0.0484 (6)
H2	0.2305	0.2639	0.9698	0.058*
N3	0.1869 (5)	0.06220 (10)	1.1044 (6)	0.0779 (10)
O1	0.2305 (4)	0.41464 (7)	0.8421 (3)	0.0717 (7)
O2	-0.0564 (3)	0.20220 (6)	0.6790 (3)	0.0594 (6)
O3	0.1521 (5)	0.04907 (9)	0.9404 (5)	0.1073 (11)
O4	0.2330 (5)	0.03803 (9)	1.2447 (5)	0.1236 (12)
C1	0.1507 (4)	0.35973 (8)	0.6012 (4)	0.0422 (7)
C2	0.1822 (4)	0.40543 (9)	0.6509 (5)	0.0521 (8)
C3	0.1630 (5)	0.43806 (11)	0.5128 (6)	0.0696 (10)
H3	0.1813	0.4685	0.5463	0.084*
C4	0.1166 (5)	0.42509 (13)	0.3260 (6)	0.0775 (11)
H4	0.1030	0.4471	0.2329	0.093*
C5	0.0895 (5)	0.38036 (13)	0.2730 (5)	0.0694 (10)
H5	0.0613	0.3720	0.1460	0.083*
C6	0.1050 (4)	0.34806 (10)	0.4110 (4)	0.0534 (8)
H6	0.0843	0.3178	0.3756	0.064*
C7	0.2868 (6)	0.45963 (11)	0.9068 (6)	0.0987 (14)
H7A	0.3885	0.4703	0.8561	0.148*
H7B	0.3399	0.4600	1.0438	0.148*
H7C	0.1701	0.4790	0.8641	0.148*
C8	0.1739 (4)	0.32553 (9)	0.7488 (4)	0.0438 (7)
H8	0.2356	0.3332	0.8765	0.053*
C9	0.0617 (4)	0.21543 (9)	0.8337 (4)	0.0424 (7)
C10	0.1119 (4)	0.18579 (9)	1.0065 (4)	0.0408 (7)
C11	0.1229 (4)	0.13972 (9)	0.9798 (4)	0.0471 (7)
H11	0.1008	0.1281	0.8580	0.057*
C12	0.1664 (4)	0.11134 (10)	1.1332 (5)	0.0555 (8)
C13	0.1935 (5)	0.12710 (13)	1.3129 (5)	0.0705 (10)

H13	0.2224	0.1071	1.4152	0.085*
C14	0.1779 (5)	0.17262 (13)	1.3418 (4)	0.0679 (10)
H14	0.1927	0.1836	1.4632	0.082*
C15	0.1397 (4)	0.20246 (10)	1.1875 (4)	0.0519 (8)
H15	0.1331	0.2335	1.2066	0.062*

Atomic displacement parameters (Å²)

	U^{11}	U^{22}	U^{33}	U^{12}	U^{13}	U^{23}
N1	0.0486 (15)	0.0407 (13)	0.0443 (14)	−0.0023 (11)	0.0043 (11)	0.0050 (11)
N2	0.0522 (15)	0.0401 (13)	0.0404 (13)	−0.0071 (11)	−0.0018 (11)	0.0035 (11)
N3	0.058 (2)	0.053 (2)	0.120 (3)	0.0095 (15)	0.026 (2)	0.032 (2)
O1	0.0983 (19)	0.0453 (13)	0.0778 (16)	−0.0138 (12)	0.0374 (14)	−0.0101 (11)
O2	0.0711 (15)	0.0427 (11)	0.0449 (12)	−0.0095 (10)	−0.0074 (10)	0.0009 (9)
O3	0.120 (3)	0.0580 (17)	0.148 (3)	0.0149 (16)	0.051 (2)	0.0044 (18)
O4	0.118 (3)	0.0780 (19)	0.170 (3)	0.0217 (17)	0.040 (2)	0.071 (2)
C1	0.0329 (16)	0.0424 (16)	0.0473 (17)	−0.0009 (12)	0.0080 (13)	0.0055 (13)
C2	0.0479 (19)	0.0468 (18)	0.063 (2)	−0.0025 (14)	0.0205 (16)	0.0043 (15)
C3	0.069 (2)	0.051 (2)	0.092 (3)	0.0039 (17)	0.030 (2)	0.0190 (19)
C4	0.074 (3)	0.078 (3)	0.082 (3)	0.012 (2)	0.026 (2)	0.037 (2)
C5	0.064 (2)	0.089 (3)	0.052 (2)	0.010 (2)	0.0146 (17)	0.0144 (19)
C6	0.0457 (19)	0.0603 (19)	0.0484 (18)	0.0025 (15)	0.0076 (14)	0.0078 (15)
C7	0.132 (4)	0.062 (2)	0.120 (3)	−0.031 (2)	0.065 (3)	−0.037 (2)
C8	0.0397 (17)	0.0452 (17)	0.0424 (16)	0.0018 (13)	0.0081 (13)	0.0014 (13)
C9	0.0427 (18)	0.0387 (15)	0.0400 (16)	0.0026 (13)	0.0056 (14)	−0.0001 (12)
C10	0.0312 (16)	0.0437 (16)	0.0414 (16)	−0.0002 (12)	0.0037 (12)	0.0041 (13)
C11	0.0372 (17)	0.0478 (18)	0.0529 (18)	0.0002 (13)	0.0102 (14)	0.0055 (14)
C12	0.0377 (18)	0.0513 (19)	0.074 (2)	0.0027 (14)	0.0143 (16)	0.0158 (17)
C13	0.053 (2)	0.078 (3)	0.071 (3)	−0.0061 (18)	0.0075 (18)	0.034 (2)
C14	0.059 (2)	0.099 (3)	0.0434 (18)	−0.014 (2)	0.0130 (16)	0.0054 (18)
C15	0.0441 (19)	0.0610 (19)	0.0466 (17)	−0.0066 (14)	0.0096 (14)	−0.0014 (15)

Geometric parameters (Å, °)

N1—C8	1.272 (3)	C5—C6	1.377 (4)
N1—N2	1.390 (3)	C5—H5	0.9300
N2—C9	1.332 (3)	C6—H6	0.9300
N2—H2	0.8600	C7—H7A	0.9600
N3—O4	1.215 (4)	C7—H7B	0.9600
N3—O3	1.223 (4)	C7—H7C	0.9600
N3—C12	1.481 (4)	C8—H8	0.9300
O1—C2	1.373 (3)	C9—C10	1.496 (3)
O1—C7	1.424 (3)	C10—C11	1.381 (4)
O2—C9	1.235 (3)	C10—C15	1.382 (4)
C1—C6	1.384 (4)	C11—C12	1.364 (4)
C1—C2	1.397 (4)	C11—H11	0.9300
C1—C8	1.459 (3)	C12—C13	1.365 (4)
C2—C3	1.380 (4)	C13—C14	1.372 (4)

C3—C4	1.369 (5)	C13—H13	0.9300
C3—H3	0.9300	C14—C15	1.399 (4)
C4—C5	1.374 (4)	C14—H14	0.9300
C4—H4	0.9300	C15—H15	0.9300
C8—N1—N2	114.3 (2)	H7A—C7—H7B	109.5
C9—N2—N1	119.1 (2)	O1—C7—H7C	109.5
C9—N2—H2	120.4	H7A—C7—H7C	109.5
N1—N2—H2	120.4	H7B—C7—H7C	109.5
O4—N3—O3	125.1 (4)	N1—C8—C1	120.7 (2)
O4—N3—C12	117.6 (4)	N1—C8—H8	119.7
O3—N3—C12	117.2 (3)	C1—C8—H8	119.7
C2—O1—C7	118.7 (3)	O2—C9—N2	123.6 (2)
C6—C1—C2	118.2 (3)	O2—C9—C10	120.4 (2)
C6—C1—C8	121.6 (2)	N2—C9—C10	116.0 (2)
C2—C1—C8	120.2 (3)	C11—C10—C15	119.6 (3)
O1—C2—C3	124.0 (3)	C11—C10—C9	117.6 (2)
O1—C2—C1	115.3 (2)	C15—C10—C9	122.8 (2)
C3—C2—C1	120.7 (3)	C12—C11—C10	119.6 (3)
C4—C3—C2	119.2 (3)	C12—C11—H11	120.2
C4—C3—H3	120.4	C10—C11—H11	120.2
C2—C3—H3	120.4	C11—C12—C13	121.7 (3)
C3—C4—C5	121.5 (3)	C11—C12—N3	119.2 (3)
C3—C4—H4	119.2	C13—C12—N3	119.1 (3)
C5—C4—H4	119.2	C12—C13—C14	119.6 (3)
C4—C5—C6	119.0 (3)	C12—C13—H13	120.2
C4—C5—H5	120.5	C14—C13—H13	120.2
C6—C5—H5	120.5	C13—C14—C15	119.6 (3)
C5—C6—C1	121.3 (3)	C13—C14—H14	120.2
C5—C6—H6	119.3	C15—C14—H14	120.2
C1—C6—H6	119.3	C10—C15—C14	119.9 (3)
O1—C7—H7A	109.5	C10—C15—H15	120.1
O1—C7—H7B	109.5	C14—C15—H15	120.1

Hydrogen-bond geometry (\AA , $^\circ$)

<i>D</i> —H \cdots <i>A</i>	<i>D</i> —H	H \cdots <i>A</i>	<i>D</i> \cdots <i>A</i>	<i>D</i> —H \cdots <i>A</i>
N2—H2 \cdots O2 ⁱ	0.86	2.03	2.856 (3)	162
C8—H8 \cdots O2 ⁱ	0.93	2.47	3.231 (3)	139

Symmetry code: (i) $x+1/2, -y+1/2, z+1/2$.