

Acta Crystallographica Section E

## Structure Reports

Online

ISSN 1600-5368

# 1-Methyl-2-({[(1-methyl-1*H*-benzimidazol-2-yl)methyl](phenyl)amino}methyl)-1*H*-benzimidazol-3-ium picrate

Bin Liu, Fan Kou, Fei Jia, Jingkui Yuan and Huilu Wu\*

School of Chemical and Biological Engineering, Lanzhou Jiaotong University, Lanzhou 730070, People's Republic of China

Correspondence e-mail: wuhuilu@163.com

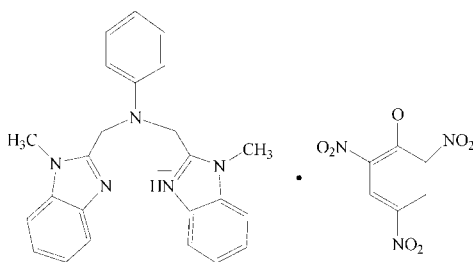
Received 30 May 2011; accepted 21 June 2011

Key indicators: single-crystal X-ray study;  $T = 293$  K; mean  $\sigma(\text{C}-\text{C}) = 0.004$  Å;  $R$  factor = 0.062;  $wR$  factor = 0.221; data-to-parameter ratio = 12.7.

In the title molecular salt,  $\text{C}_{24}\text{H}_{24}\text{N}_5^+ \cdot \text{C}_6\text{H}_2\text{N}_3\text{O}_7^-$ , the dihedral angle between the benzimidazole rings of the cation is  $5.041(2)^\circ$ . In the anion, the three nitro groups make dihedral angles of  $2.468(3)$ ,  $12.795(3)$  and  $24.958(4)^\circ$  with respect to the central ring. In the crystal, weak aromatic  $\pi-\pi$  stacking [centroid-centroid distance =  $3.599(15)$  Å] consolidates the packing. In addition, an intramolecular  $\text{N}-\text{H} \cdots \text{N}$  hydrogen bond is observed.

## Related literature

For background to proton-transfer compounds, see: Aghabozorg *et al.* (2008) and to benzimidazoles, see: Ram *et al.* (1992). For the biological activity of benzimidazoles, see: Baraldi *et al.* (2004); Göker *et al.* (2002); Jayasekera *et al.* (2005); Starčević *et al.* (2007).



## Experimental

### Crystal data

 $\text{C}_{24}\text{H}_{24}\text{N}_5^+ \cdot \text{C}_6\text{H}_2\text{N}_3\text{O}_7^-$  $M_r = 610.59$ Triclinic,  $P\bar{1}$  $a = 9.4233(5)$  Å $b = 12.3523(7)$  Å $c = 12.5772(7)$  Å $\alpha = 92.007(1)^\circ$  $\beta = 98.497(1)^\circ$  $\gamma = 103.685(1)^\circ$  $V = 1403.07(13)$  Å<sup>3</sup> $Z = 2$ Mo  $K\alpha$  radiation $\mu = 0.11$  mm<sup>-1</sup>  
 $T = 293$  K $0.31 \times 0.30 \times 0.29$  mm

### Data collection

Bruker SMART APEX  
diffractometerAbsorption correction: multi-scan  
(*SADABS*; Sheldrick, 2001)  
 $T_{\min} = 0.968$ ,  $T_{\max} = 0.970$ 11689 measured reflections  
5217 independent reflections  
3567 reflections with  $I > 2\sigma(I)$   
 $R_{\text{int}} = 0.025$ 

### Refinement

 $R[F^2 > 2\sigma(F^2)] = 0.062$  $wR(F^2) = 0.221$  $S = 1.19$ 

5217 reflections

411 parameters

1 restraint

H atoms treated by a mixture of  
independent and constrained  
refinement $\Delta\rho_{\text{max}} = 0.60$  e Å<sup>-3</sup> $\Delta\rho_{\text{min}} = -0.50$  e Å<sup>-3</sup>
**Table 1**

Hydrogen-bond geometry (Å, °).

$D-H \cdots A$	$D-H$	$H \cdots A$	$D \cdots A$	$D-H \cdots A$
$\text{N3}-\text{H3N} \cdots \text{N1}$	0.92	1.85	2.715 (8)	157

Data collection: *SMART* (Bruker, 2001); cell refinement: *SAINT* (Bruker, 2001); data reduction: *SAINT*; program(s) used to solve structure: *SHELXS97* (Sheldrick, 2008); program(s) used to refine structure: *SHELXL97* (Sheldrick, 2008); molecular graphics: *SHELXTL* (Sheldrick, 2008); software used to prepare material for publication: *SHELXTL*.

The authors acknowledge the financial support and grants from the 'Qing Lan' Talent Engineering Funds and Students' Science and Technology Innovation Funds (grant No. DXS2010-040) of Lanzhou Jiaotong University. A grant from the Middle-Young Age Science Foundation (grant No. 3YS061-A25-023) and the Long Yuan 'Qing Nian' of Gansu Province is also acknowledged.

Supplementary data and figures for this paper are available from the IUCr electronic archives (Reference: LR2014).

## References

- Aghabozorg, H., Manteghi, F. & Sheshmani, S. (2008). *J. Iran. Chem. Soc.* **5**, 184–227.
- Baraldi, P. G., Bovero, A., Fruttarolo, F., Preti, D., Tabrizi, M. A., Pavani, M. G. & Romagnoli, R. (2004). *Med. Res. Rev.* **24**, 475–528.
- Bruker (2001). *SAINT* and *SMART*. Bruker AXS Inc., Madison, Wisconsin, USA.
- Göker, H., Kus, C., Boykin, D. W., Yildiz, S. & Altanlar, N. (2002). *Bioorg. Med. Chem.* **10**, 2589–2596.
- Jayasekera, M. M. K., Onheiber, K., Keith, J., Venkatesan, H., Santillan, A., Stocking, E. M., Tang, L., Miller, J., Gomez, L., Rhead, B., Delcamp, T., Huang, S., Wolin, R., Bobkova, E. & Shaw, K. J. (2005). *Antimicrob. Agents Chemother.* **49**, 131–136.
- Ram, S., Wise, D. S., Wotring, L. L., McCall, J. W. & Townsend, L. B. (1992). *J. Med. Chem.* **35**, 539–547.
- Sheldrick, G. M. (2001). *SADABS*. University of Göttingen, Germany.
- Sheldrick, G. M. (2008). *Acta Cryst.* **A64**, 112–122.
- Starčević, K., Kralj, M., Ester, K., Sabol, I., Grce, M., Pavelić, K. & Karminski-Zamola, G. (2007). *Bioorg. Med. Chem.* **15**, 4419–4426.

## supporting information

*Acta Cryst.* (2011). E67, o1816 [doi:10.1107/S1600536811024275]

## 1-Methyl-2-({[(1-methyl-1*H*-benzimidazol-2-yl)methyl](phenyl)amino}-methyl)1*H*-benzimidazol-3-ium picrate

Bin Liu, Fan Kou, Fei Jia, Jingui Yuan and Huilu Wu

### S1. Comment

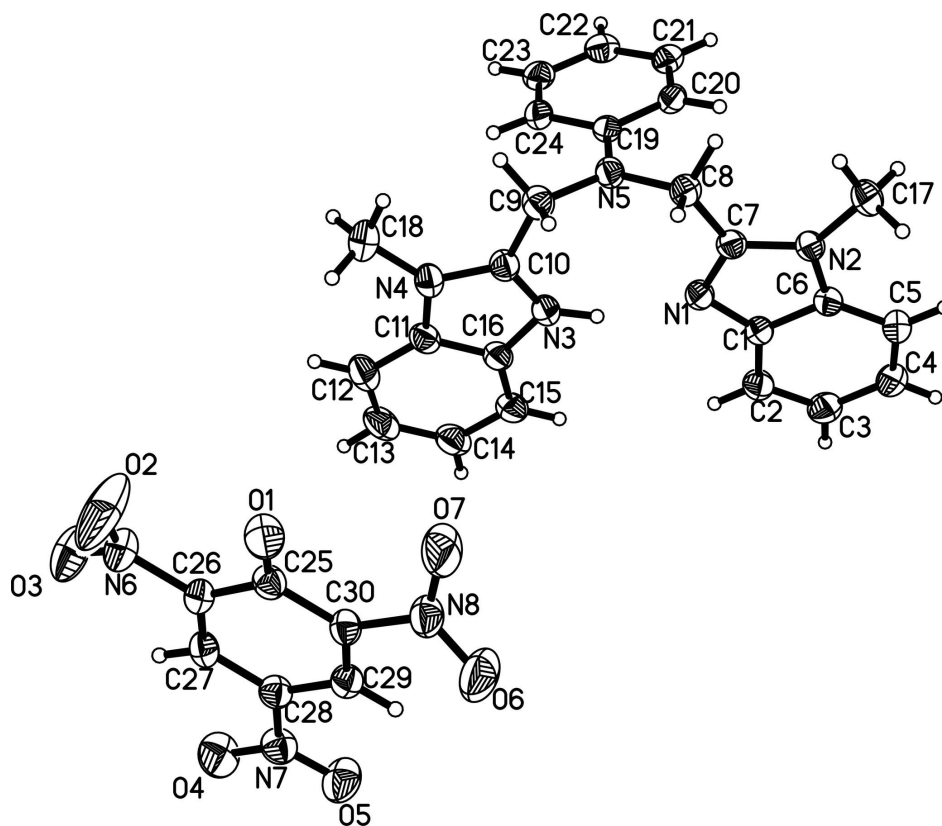
Bis-benzimidazoles are known to be strong chelating agents coordinating through both the C=N nitrogen atoms. In addition, bis-benzimidazoles have a polymer-forming characteristic as a typical multidentate ligand. Benzimidazole compounds are environmentally friendly compounds with two high active nitrogen atoms in 1, 3-sites (Ram *et al.*, 1992). Benzimidazoles and their azino-fused cyclic derivatives have a wide range of well known biological activities such as anticancer (Baraldi *et al.*, 2004), antimicrobial (Jayasekera *et al.*, 2005), antifungal (Göker *et al.*, 2002), antiviral (Starčević *et al.*, 2007).

In this paper, the asymmetric unit of the title proton transfer compound consists of a bis(*N*-methylbenzimidazol-2-yl-methyl)aniline(MEBBA) cation interacting with a picrate anion. The proton of the picric acid is transferred to the N3 nitrogen atoms of the MEBBA(Fig. 1). The dihedral angle between the planes defined by N2—C7—N1 and N3—C10—N4 is 5.041 (2)°, which indicates that the two benzimidazole rings are almost coplanar.

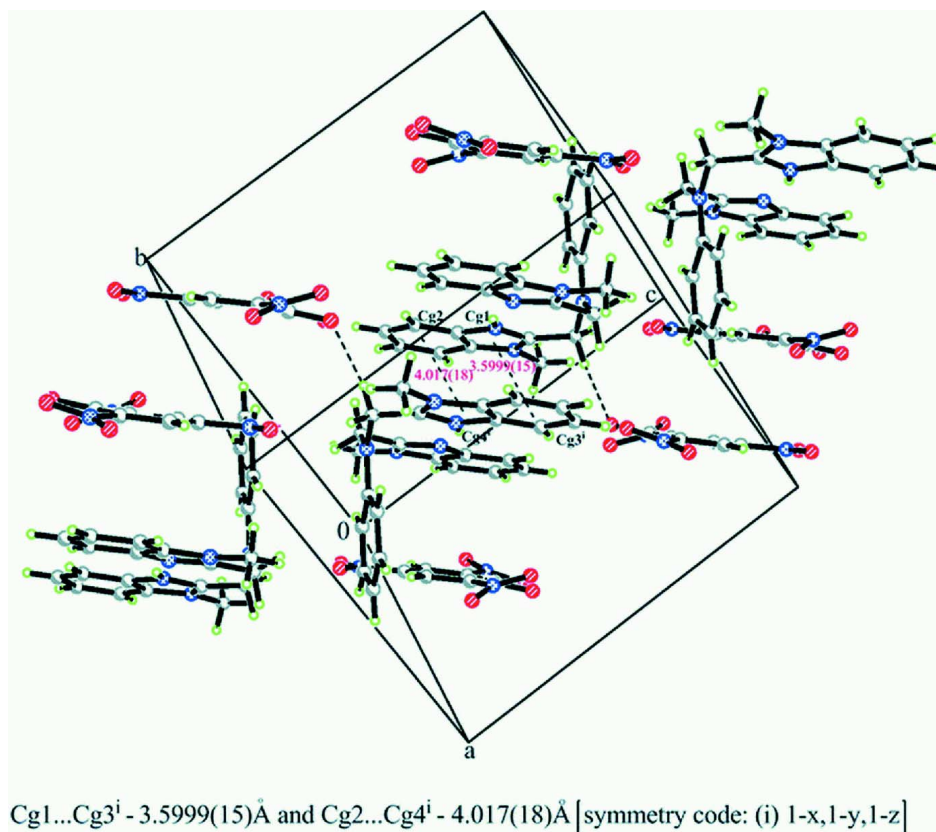
The crystal structure is mainly stabilized by weak  $\pi$ - $\pi$  interactions involving the benzimidazol rings with centroid-centroid distances,  $Cg1 \cdots Cg3^i$  and  $Cg2 \cdots Cg4^i$  of 3.5999 (15) and 4.017 (18) Å respectively [symmetry code: (i) 1-x, 1-y, 1-z.  $Cg1$  centroid of the (N1,C1,C6,N2,C7) ring;  $Cg2$  centroid of the (N3,C10,N4,C11,C16) ring;  $Cg3$  centroid of the (C11-C16) ring;  $Cg4$  centroid of the (C1-C6) ring ]. In addition an N3-H3N $\cdots$ N1 intramolecular hydrogen bond is observed.

### S2. Refinement

All H atoms were geometrically positioned and refined using a riding-model approximation with C—H distances from 0.93 to 0.97 Å and N—H = 0.92 Å, and with  $U_{iso}(H) = 1.2 U_{eq}(C)$  or  $U_{iso}(H) = 1.5 U_{eq}(C_{methyl})$  or  $U_{iso}(H) = 1.1 U_{eq}(N)$ .

**Figure 1**

The molecular structure of the title compound. Displacement ellipsoids are drawn at the 30% probability level.

**Figure 2**

A view of the crystal packing of the title compound. Intermolecular hydrogen bonds are shown as dashed lines.

### 1-Methyl-2-(((1-methyl-1H-benzimidazol-2-yl)methyl)(phenylamino)methyl)1H-benzimidazol-3-ium picrate

#### Crystal data

$C_{30}H_{26}N_8O_7$

$M_r = 610.59$

Triclinic,  $P\bar{1}$

$a = 9.4233(5) \text{ \AA}$

$b = 12.3523(7) \text{ \AA}$

$c = 12.5772(7) \text{ \AA}$

$\alpha = 92.007(1)^\circ$

$\beta = 98.497(1)^\circ$

$\gamma = 103.685(1)^\circ$

$V = 1403.07(13) \text{ \AA}^3$

$Z = 2$

$F(000) = 636$

$D_x = 1.445 \text{ Mg m}^{-3}$

Mo  $K\alpha$  radiation,  $\lambda = 0.71073 \text{ \AA}$

Cell parameters from 5217 reflections

$\theta = 3.0\text{--}25.5^\circ$

$\mu = 0.11 \text{ mm}^{-1}$

$T = 293 \text{ K}$

Block, yellow

$0.31 \times 0.30 \times 0.29 \text{ mm}$

#### Data collection

Bruker SMART APEX

diffractometer

Radiation source: fine-focus sealed tube

Graphite monochromator

$\omega$  scans

Absorption correction: multi-scan

(*SADABS*; Sheldrick, 2001)

$T_{\min} = 0.968$ ,  $T_{\max} = 0.970$

11689 measured reflections

5217 independent reflections

3567 reflections with  $I > 2\sigma(I)$

$R_{\text{int}} = 0.025$

$\theta_{\max} = 25.5^\circ$ ,  $\theta_{\min} = 3.0^\circ$

$h = -11 \rightarrow 11$

$k = -14 \rightarrow 14$

$l = -15 \rightarrow 13$

*Refinement*Refinement on  $F^2$ 

Least-squares matrix: full

 $R[F^2 > 2\sigma(F^2)] = 0.062$  $wR(F^2) = 0.221$  $S = 1.19$ 

5217 reflections

411 parameters

1 restraint

Primary atom site location: structure-invariant  
direct methodsSecondary atom site location: difference Fourier  
mapHydrogen site location: inferred from  
neighbouring sitesH atoms treated by a mixture of independent  
and constrained refinement $w = 1/[\sigma^2(F_o^2) + (0.1022P)^2 + 0.6611P]$ where  $P = (F_o^2 + 2F_c^2)/3$  $(\Delta/\sigma)_{\max} < 0.001$  $\Delta\rho_{\max} = 0.60 \text{ e } \text{\AA}^{-3}$  $\Delta\rho_{\min} = -0.50 \text{ e } \text{\AA}^{-3}$ Extinction correction: *SHELXL97* (Sheldrick,  
2008),  $F_c^* = kFc[1 + 0.001xFc^2\lambda^3/\sin(2\theta)]^{-1/4}$ 

Extinction coefficient: 0.024 (4)

*Special details*

**Geometry.** All e.s.d.'s (except the e.s.d. in the dihedral angle between two l.s. planes) are estimated using the full covariance matrix. The cell e.s.d.'s are taken into account individually in the estimation of e.s.d.'s in distances, angles and torsion angles; correlations between e.s.d.'s in cell parameters are only used when they are defined by crystal symmetry. An approximate (isotropic) treatment of cell e.s.d.'s is used for estimating e.s.d.'s involving l.s. planes.

**Refinement.** Refinement of  $F^2$  against ALL reflections. The weighted  $R$ -factor  $wR$  and goodness of fit  $S$  are based on  $F^2$ , conventional  $R$ -factors  $R$  are based on  $F$ , with  $F$  set to zero for negative  $F^2$ . The threshold expression of  $F^2 > \sigma(F^2)$  is used only for calculating  $R$ -factors(gt) *etc.* and is not relevant to the choice of reflections for refinement.  $R$ -factors based on  $F^2$  are statistically about twice as large as those based on  $F$ , and  $R$ -factors based on ALL data will be even larger.

*Fractional atomic coordinates and isotropic or equivalent isotropic displacement parameters ( $\text{\AA}^2$ )*

	$x$	$y$	$z$	$U_{\text{iso}}^*/U_{\text{eq}}$
O1	0.4994 (3)	-0.13472 (19)	0.29886 (19)	0.0706 (7)
O2	0.2431 (4)	-0.2821 (4)	0.2686 (4)	0.172 (2)
O3	0.0611 (3)	-0.2466 (3)	0.1765 (3)	0.1027 (10)
O4	0.1139 (3)	0.0278 (2)	-0.0786 (2)	0.0864 (8)
O5	0.3145 (3)	0.1577 (2)	-0.0626 (2)	0.0874 (9)
O6	0.7374 (3)	0.1381 (3)	0.1867 (3)	0.1111 (12)
O7	0.7036 (3)	0.0635 (3)	0.3324 (3)	0.1153 (13)
N1	0.5570 (3)	0.6424 (2)	0.67349 (18)	0.0486 (6)
N2	0.7671 (2)	0.7189 (2)	0.78335 (18)	0.0474 (6)
N3	0.3314 (3)	0.4630 (2)	0.59716 (19)	0.0518 (6)
N4	0.2023 (3)	0.2910 (2)	0.6013 (2)	0.0530 (6)
N5	0.4792 (3)	0.46665 (19)	0.81228 (19)	0.0481 (6)
N6	0.1909 (3)	-0.2216 (2)	0.2111 (3)	0.0674 (8)
N7	0.2401 (3)	0.0720 (2)	-0.0337 (2)	0.0610 (7)
N8	0.6589 (3)	0.0772 (2)	0.2407 (2)	0.0643 (7)
C1	0.6137 (3)	0.7487 (2)	0.6418 (2)	0.0465 (7)
C2	0.5602 (4)	0.8062 (3)	0.5586 (2)	0.0570 (8)
H2A	0.4724	0.7746	0.5123	0.068*
C3	0.6420 (4)	0.9119 (3)	0.5471 (3)	0.0650 (9)
H3A	0.6086	0.9527	0.4922	0.078*
C4	0.7734 (4)	0.9591 (3)	0.6158 (3)	0.0658 (9)
H4A	0.8254	1.0309	0.6056	0.079*
C5	0.8294 (4)	0.9035 (3)	0.6984 (3)	0.0593 (8)

---

H5A	0.9181	0.9353	0.7436	0.071*
C6	0.7461 (3)	0.7972 (2)	0.7104 (2)	0.0476 (7)
C7	0.6516 (3)	0.6286 (2)	0.7579 (2)	0.0467 (7)
C8	0.6330 (3)	0.5244 (3)	0.8170 (2)	0.0506 (7)
H8A	0.6844	0.4747	0.7862	0.061*
H8B	0.6782	0.5435	0.8918	0.061*
C9	0.4206 (3)	0.3610 (2)	0.7497 (2)	0.0542 (7)
H9A	0.3671	0.3075	0.7934	0.065*
H9B	0.5019	0.3328	0.7306	0.065*
C10	0.3194 (3)	0.3709 (2)	0.6493 (2)	0.0496 (7)
C11	0.1347 (3)	0.3364 (3)	0.5125 (2)	0.0532 (7)
C12	0.0087 (4)	0.2915 (3)	0.4368 (3)	0.0662 (9)
H12A	-0.0465	0.2185	0.4375	0.079*
C13	-0.0292 (4)	0.3618 (4)	0.3608 (3)	0.0736 (11)
H13A	-0.1131	0.3356	0.3090	0.088*
C14	0.0544 (4)	0.4711 (3)	0.3591 (3)	0.0696 (9)
H14A	0.0251	0.5157	0.3062	0.084*
C15	0.1784 (4)	0.5142 (3)	0.4334 (2)	0.0593 (8)
H15A	0.2341	0.5870	0.4321	0.071*
C16	0.2174 (3)	0.4447 (3)	0.5106 (2)	0.0506 (7)
C17	0.8923 (3)	0.7329 (3)	0.8698 (3)	0.0642 (9)
H17A	0.8817	0.6669	0.9089	0.096*
H17B	0.8956	0.7960	0.9178	0.096*
H17C	0.9823	0.7452	0.8399	0.096*
C18	0.1542 (4)	0.1791 (3)	0.6371 (3)	0.0715 (10)
H18A	0.2203	0.1705	0.7003	0.107*
H18B	0.1548	0.1247	0.5809	0.107*
H18C	0.0558	0.1685	0.6537	0.107*
C19	0.3877 (3)	0.5143 (2)	0.8665 (2)	0.0434 (6)
C20	0.4428 (3)	0.6143 (2)	0.9302 (2)	0.0495 (7)
H20A	0.5427	0.6500	0.9368	0.059*
C21	0.3521 (4)	0.6609 (3)	0.9831 (2)	0.0564 (8)
H21A	0.3918	0.7272	1.0260	0.068*
C22	0.2039 (4)	0.6114 (3)	0.9739 (3)	0.0590 (8)
H22A	0.1425	0.6441	1.0088	0.071*
C23	0.1481 (3)	0.5121 (3)	0.9119 (2)	0.0601 (8)
H23A	0.0478	0.4776	0.9052	0.072*
C24	0.2373 (3)	0.4627 (3)	0.8597 (2)	0.0530 (7)
H24A	0.1975	0.3947	0.8197	0.064*
C25	0.4378 (3)	-0.0849 (2)	0.2298 (2)	0.0489 (7)
C26	0.2853 (3)	-0.1251 (2)	0.1753 (2)	0.0482 (7)
C27	0.2223 (3)	-0.0748 (2)	0.0922 (2)	0.0504 (7)
H27A	0.1246	-0.1048	0.0603	0.060*
C28	0.3037 (3)	0.0202 (2)	0.0560 (2)	0.0498 (7)
C29	0.4476 (3)	0.0692 (2)	0.1063 (2)	0.0515 (7)
H29A	0.5011	0.1347	0.0827	0.062*
C30	0.5096 (3)	0.0199 (2)	0.1907 (2)	0.0483 (7)
H3N	0.398 (2)	0.5313 (13)	0.606 (2)	0.046 (8)*

---

Atomic displacement parameters ( $\text{\AA}^2$ )

	$U^{11}$	$U^{22}$	$U^{33}$	$U^{12}$	$U^{13}$	$U^{23}$
O1	0.0762 (15)	0.0589 (14)	0.0696 (15)	0.0146 (12)	-0.0099 (12)	0.0146 (11)
O2	0.103 (3)	0.148 (4)	0.237 (5)	-0.016 (2)	-0.012 (3)	0.137 (4)
O3	0.0588 (17)	0.091 (2)	0.148 (3)	-0.0060 (15)	0.0184 (17)	0.032 (2)
O4	0.0647 (16)	0.102 (2)	0.0810 (18)	0.0148 (15)	-0.0184 (13)	0.0133 (15)
O5	0.0880 (19)	0.0789 (18)	0.0841 (18)	0.0042 (15)	-0.0026 (15)	0.0349 (15)
O6	0.0684 (18)	0.127 (3)	0.109 (2)	-0.0245 (18)	-0.0051 (16)	0.034 (2)
O7	0.089 (2)	0.126 (3)	0.090 (2)	-0.0287 (18)	-0.0357 (17)	0.0316 (19)
N1	0.0416 (12)	0.0545 (14)	0.0457 (13)	0.0069 (10)	0.0007 (10)	0.0083 (11)
N2	0.0387 (12)	0.0566 (14)	0.0438 (12)	0.0090 (11)	0.0010 (10)	0.0047 (11)
N3	0.0533 (14)	0.0481 (14)	0.0470 (13)	0.0038 (12)	0.0006 (11)	0.0011 (11)
N4	0.0505 (14)	0.0464 (14)	0.0586 (15)	0.0070 (11)	0.0069 (11)	-0.0036 (11)
N5	0.0462 (13)	0.0451 (13)	0.0483 (13)	0.0065 (10)	0.0004 (10)	0.0049 (10)
N6	0.0639 (19)	0.0519 (16)	0.083 (2)	0.0054 (14)	0.0122 (15)	0.0138 (14)
N7	0.0594 (17)	0.0658 (18)	0.0556 (15)	0.0177 (14)	-0.0016 (13)	0.0062 (13)
N8	0.0553 (16)	0.0602 (17)	0.0666 (18)	0.0007 (13)	-0.0038 (14)	0.0076 (14)
C1	0.0437 (15)	0.0498 (16)	0.0436 (14)	0.0078 (12)	0.0049 (12)	0.0041 (12)
C2	0.0579 (18)	0.0584 (19)	0.0509 (17)	0.0108 (15)	0.0004 (14)	0.0092 (14)
C3	0.076 (2)	0.062 (2)	0.0574 (19)	0.0149 (17)	0.0125 (16)	0.0160 (16)
C4	0.074 (2)	0.0530 (19)	0.065 (2)	0.0019 (16)	0.0152 (17)	0.0096 (16)
C5	0.0535 (18)	0.0581 (19)	0.0586 (18)	0.0002 (15)	0.0077 (14)	-0.0010 (15)
C6	0.0457 (15)	0.0509 (16)	0.0445 (15)	0.0085 (13)	0.0080 (12)	0.0009 (12)
C7	0.0410 (14)	0.0563 (17)	0.0422 (14)	0.0107 (13)	0.0059 (12)	0.0055 (12)
C8	0.0403 (15)	0.0588 (18)	0.0517 (16)	0.0119 (13)	0.0034 (12)	0.0088 (13)
C9	0.0579 (18)	0.0468 (16)	0.0562 (17)	0.0133 (14)	0.0033 (14)	0.0039 (13)
C10	0.0512 (16)	0.0458 (16)	0.0497 (16)	0.0097 (13)	0.0051 (13)	0.0010 (13)
C11	0.0478 (16)	0.0621 (19)	0.0482 (16)	0.0119 (14)	0.0077 (13)	-0.0079 (14)
C12	0.0513 (18)	0.072 (2)	0.068 (2)	0.0075 (16)	0.0015 (16)	-0.0176 (18)
C13	0.0528 (19)	0.104 (3)	0.056 (2)	0.016 (2)	-0.0061 (15)	-0.016 (2)
C14	0.063 (2)	0.091 (3)	0.0509 (18)	0.0170 (19)	0.0001 (15)	-0.0035 (17)
C15	0.0578 (18)	0.069 (2)	0.0472 (16)	0.0122 (16)	0.0023 (14)	0.0031 (15)
C16	0.0464 (15)	0.0592 (18)	0.0426 (15)	0.0085 (14)	0.0041 (12)	-0.0008 (13)
C17	0.0467 (17)	0.077 (2)	0.0596 (19)	0.0074 (16)	-0.0080 (14)	0.0044 (16)
C18	0.065 (2)	0.054 (2)	0.088 (3)	-0.0007 (16)	0.0122 (18)	0.0033 (18)
C19	0.0437 (14)	0.0461 (15)	0.0377 (13)	0.0076 (12)	0.0016 (11)	0.0093 (11)
C20	0.0467 (15)	0.0487 (16)	0.0499 (16)	0.0047 (13)	0.0078 (13)	0.0104 (13)
C21	0.066 (2)	0.0519 (17)	0.0505 (17)	0.0102 (15)	0.0121 (14)	0.0113 (14)
C22	0.0565 (18)	0.074 (2)	0.0513 (17)	0.0221 (16)	0.0133 (14)	0.0115 (16)
C23	0.0446 (16)	0.081 (2)	0.0498 (17)	0.0056 (16)	0.0070 (13)	0.0132 (16)
C24	0.0460 (16)	0.0573 (18)	0.0478 (16)	0.0000 (14)	0.0015 (13)	0.0084 (13)
C25	0.0546 (17)	0.0440 (15)	0.0469 (15)	0.0132 (13)	0.0029 (13)	0.0018 (12)
C26	0.0486 (16)	0.0398 (15)	0.0540 (16)	0.0061 (12)	0.0086 (13)	0.0040 (12)
C27	0.0421 (15)	0.0465 (16)	0.0571 (17)	0.0052 (12)	0.0022 (13)	-0.0050 (13)
C28	0.0486 (16)	0.0528 (17)	0.0463 (15)	0.0130 (13)	0.0006 (12)	0.0049 (13)
C29	0.0535 (17)	0.0479 (16)	0.0508 (16)	0.0087 (13)	0.0069 (13)	0.0049 (13)
C30	0.0422 (15)	0.0466 (16)	0.0519 (16)	0.0073 (12)	0.0008 (12)	0.0022 (13)

*Geometric parameters (Å, °)*

O1—C25	1.236 (3)	C9—H9A	0.9700
O2—N6	1.196 (4)	C9—H9B	0.9700
O3—N6	1.198 (4)	C11—C16	1.383 (4)
O4—N7	1.227 (3)	C11—C12	1.393 (4)
O5—N7	1.222 (4)	C12—C13	1.378 (5)
O6—N8	1.223 (4)	C12—H12A	0.9300
O7—N8	1.199 (4)	C13—C14	1.395 (5)
N1—C7	1.326 (3)	C13—H13A	0.9300
N1—C1	1.391 (4)	C14—C15	1.368 (4)
N2—C7	1.353 (4)	C14—H14A	0.9300
N2—C6	1.384 (4)	C15—C16	1.385 (4)
N2—C17	1.455 (4)	C15—H15A	0.9300
N3—C10	1.322 (4)	C17—H17A	0.9600
N3—C16	1.383 (4)	C17—H17B	0.9600
N3—H3N	0.916 (10)	C17—H17C	0.9600
N4—C10	1.343 (4)	C18—H18A	0.9600
N4—C11	1.403 (4)	C18—H18B	0.9600
N4—C18	1.458 (4)	C18—H18C	0.9600
N5—C19	1.393 (4)	C19—C20	1.393 (4)
N5—C9	1.444 (4)	C19—C24	1.398 (4)
N5—C8	1.447 (4)	C20—C21	1.371 (4)
N6—C26	1.438 (4)	C20—H20A	0.9300
N7—C28	1.440 (4)	C21—C22	1.372 (4)
N8—C30	1.453 (4)	C21—H21A	0.9300
C1—C2	1.385 (4)	C22—C23	1.377 (5)
C1—C6	1.397 (4)	C22—H22A	0.9300
C2—C3	1.374 (5)	C23—C24	1.373 (5)
C2—H2A	0.9300	C23—H23A	0.9300
C3—C4	1.388 (5)	C24—H24A	0.9300
C3—H3A	0.9300	C25—C30	1.450 (4)
C4—C5	1.374 (5)	C25—C26	1.460 (4)
C4—H4A	0.9300	C26—C27	1.366 (4)
C5—C6	1.387 (4)	C27—C28	1.374 (4)
C5—H5A	0.9300	C27—H27A	0.9300
C7—C8	1.495 (4)	C28—C29	1.392 (4)
C8—H8A	0.9700	C29—C30	1.368 (4)
C8—H8B	0.9700	C29—H29A	0.9300
C9—C10	1.494 (4)		
C7—N1—C1	106.1 (2)	C13—C12—H12A	122.0
C7—N2—C6	107.3 (2)	C11—C12—H12A	122.0
C7—N2—C17	127.3 (3)	C12—C13—C14	122.0 (3)
C6—N2—C17	125.4 (3)	C12—C13—H13A	119.0
C10—N3—C16	108.6 (3)	C14—C13—H13A	119.0
C10—N3—H3N	133.7 (18)	C15—C14—C13	121.5 (3)
C16—N3—H3N	117.7 (18)	C15—C14—H14A	119.2



C10—N4—C11	107.1 (2)	C13—C14—H14A	119.2
C10—N4—C18	125.8 (3)	C14—C15—C16	117.1 (3)
C11—N4—C18	127.1 (3)	C14—C15—H15A	121.5
C19—N5—C9	120.3 (2)	C16—C15—H15A	121.5
C19—N5—C8	119.8 (2)	C11—C16—N3	107.0 (3)
C9—N5—C8	119.9 (3)	C11—C16—C15	121.5 (3)
O2—N6—O3	119.6 (3)	N3—C16—C15	131.5 (3)
O2—N6—C26	120.2 (3)	N2—C17—H17A	109.5
O3—N6—C26	120.0 (3)	N2—C17—H17B	109.5
O5—N7—O4	122.7 (3)	H17A—C17—H17B	109.5
O5—N7—C28	118.7 (3)	N2—C17—H17C	109.5
O4—N7—C28	118.6 (3)	H17A—C17—H17C	109.5
O7—N8—O6	121.3 (3)	H17B—C17—H17C	109.5
O7—N8—C30	120.3 (3)	N4—C18—H18A	109.5
O6—N8—C30	118.4 (3)	N4—C18—H18B	109.5
C2—C1—N1	130.7 (3)	H18A—C18—H18B	109.5
C2—C1—C6	120.7 (3)	N4—C18—H18C	109.5
N1—C1—C6	108.6 (2)	H18A—C18—H18C	109.5
C3—C2—C1	117.4 (3)	H18B—C18—H18C	109.5
C3—C2—H2A	121.3	N5—C19—C20	121.3 (2)
C1—C2—H2A	121.3	N5—C19—C24	121.1 (3)
C2—C3—C4	121.4 (3)	C20—C19—C24	117.6 (3)
C2—C3—H3A	119.3	C21—C20—C19	121.1 (3)
C4—C3—H3A	119.3	C21—C20—H20A	119.5
C5—C4—C3	122.4 (3)	C19—C20—H20A	119.5
C5—C4—H4A	118.8	C20—C21—C22	121.1 (3)
C3—C4—H4A	118.8	C20—C21—H21A	119.5
C4—C5—C6	116.2 (3)	C22—C21—H21A	119.5
C4—C5—H5A	121.9	C21—C22—C23	118.5 (3)
C6—C5—H5A	121.9	C21—C22—H22A	120.7
N2—C6—C5	132.0 (3)	C23—C22—H22A	120.7
N2—C6—C1	106.0 (2)	C24—C23—C22	121.5 (3)
C5—C6—C1	122.0 (3)	C24—C23—H23A	119.3
N1—C7—N2	112.1 (2)	C22—C23—H23A	119.3
N1—C7—C8	123.7 (3)	C23—C24—C19	120.3 (3)
N2—C7—C8	124.2 (2)	C23—C24—H24A	119.9
N5—C8—C7	112.6 (2)	C19—C24—H24A	119.9
N5—C8—H8A	109.1	O1—C25—C30	124.1 (3)
C7—C8—H8A	109.1	O1—C25—C26	124.5 (3)
N5—C8—H8B	109.1	C30—C25—C26	111.4 (2)
C7—C8—H8B	109.1	C27—C26—N6	116.3 (3)
H8A—C8—H8B	107.8	C27—C26—C25	124.1 (3)
N5—C9—C10	112.1 (2)	N6—C26—C25	119.6 (3)
N5—C9—H9A	109.2	C26—C27—C28	119.8 (3)
C10—C9—H9A	109.2	C26—C27—H27A	120.1
N5—C9—H9B	109.2	C28—C27—H27A	120.1
C10—C9—H9B	109.2	C27—C28—C29	120.8 (3)
H9A—C9—H9B	107.9	C27—C28—N7	120.4 (3)

N3—C10—N4	110.6 (3)	C29—C28—N7	118.8 (3)
N3—C10—C9	123.7 (3)	C30—C29—C28	119.3 (3)
N4—C10—C9	125.7 (3)	C30—C29—H29A	120.4
C16—C11—C12	121.9 (3)	C28—C29—H29A	120.4
C16—C11—N4	106.7 (2)	C29—C30—C25	124.3 (3)
C12—C11—N4	131.4 (3)	C29—C30—N8	116.1 (3)
C13—C12—C11	116.0 (3)	C25—C30—N8	119.5 (2)
C7—N1—C1—C2	-179.9 (3)	N4—C11—C16—N3	-0.3 (3)
C7—N1—C1—C6	0.3 (3)	C12—C11—C16—C15	0.3 (5)
N1—C1—C2—C3	180.0 (3)	N4—C11—C16—C15	-178.7 (3)
C6—C1—C2—C3	-0.3 (5)	C10—N3—C16—C11	0.0 (3)
C1—C2—C3—C4	0.3 (5)	C10—N3—C16—C15	178.2 (3)
C2—C3—C4—C5	0.2 (6)	C14—C15—C16—C11	0.1 (5)
C3—C4—C5—C6	-0.7 (5)	C14—C15—C16—N3	-177.9 (3)
C7—N2—C6—C5	-179.6 (3)	C9—N5—C19—C20	177.9 (2)
C17—N2—C6—C5	-0.2 (5)	C8—N5—C19—C20	-3.3 (4)
C7—N2—C6—C1	0.1 (3)	C9—N5—C19—C24	-1.5 (4)
C17—N2—C6—C1	179.4 (3)	C8—N5—C19—C24	177.3 (2)
C4—C5—C6—N2	-179.6 (3)	N5—C19—C20—C21	179.8 (3)
C4—C5—C6—C1	0.8 (5)	C24—C19—C20—C21	-0.8 (4)
C2—C1—C6—N2	180.0 (3)	C19—C20—C21—C22	-0.9 (4)
N1—C1—C6—N2	-0.2 (3)	C20—C21—C22—C23	1.3 (4)
C2—C1—C6—C5	-0.3 (5)	C21—C22—C23—C24	-0.1 (5)
N1—C1—C6—C5	179.5 (3)	C22—C23—C24—C19	-1.6 (4)
C1—N1—C7—N2	-0.2 (3)	N5—C19—C24—C23	-178.6 (3)
C1—N1—C7—C8	-179.6 (3)	C20—C19—C24—C23	2.0 (4)
C6—N2—C7—N1	0.1 (3)	O2—N6—C26—C27	166.1 (4)
C17—N2—C7—N1	-179.2 (3)	O3—N6—C26—C27	-8.0 (5)
C6—N2—C7—C8	179.5 (3)	O2—N6—C26—C25	-15.6 (6)
C17—N2—C7—C8	0.1 (5)	O3—N6—C26—C25	170.3 (3)
C19—N5—C8—C7	-68.7 (3)	O1—C25—C26—C27	-173.8 (3)
C9—N5—C8—C7	110.1 (3)	C30—C25—C26—C27	4.8 (4)
N1—C7—C8—N5	-29.1 (4)	O1—C25—C26—N6	8.0 (5)
N2—C7—C8—N5	151.6 (3)	C30—C25—C26—N6	-173.4 (3)
C19—N5—C9—C10	70.9 (3)	N6—C26—C27—C28	177.7 (3)
C8—N5—C9—C10	-107.9 (3)	C25—C26—C27—C28	-0.6 (5)
C16—N3—C10—N4	0.3 (3)	C26—C27—C28—C29	-3.1 (5)
C16—N3—C10—C9	-177.8 (3)	C26—C27—C28—N7	178.0 (3)
C11—N4—C10—N3	-0.4 (3)	O5—N7—C28—C27	178.6 (3)
C18—N4—C10—N3	-179.3 (3)	O4—N7—C28—C27	-2.1 (5)
C11—N4—C10—C9	177.6 (3)	O5—N7—C28—C29	-0.3 (4)
C18—N4—C10—C9	-1.3 (5)	O4—N7—C28—C29	179.1 (3)
N5—C9—C10—N3	29.2 (4)	C27—C28—C29—C30	1.9 (5)
N5—C9—C10—N4	-148.6 (3)	N7—C28—C29—C30	-179.2 (3)
C10—N4—C11—C16	0.4 (3)	C28—C29—C30—C25	3.1 (5)
C18—N4—C11—C16	179.3 (3)	C28—C29—C30—N8	-178.6 (3)
C10—N4—C11—C12	-178.4 (3)	O1—C25—C30—C29	172.5 (3)

C18—N4—C11—C12	0.4 (5)	C26—C25—C30—C29	-6.1 (4)
C16—C11—C12—C13	-0.6 (5)	O1—C25—C30—N8	-5.7 (5)
N4—C11—C12—C13	178.1 (3)	C26—C25—C30—N8	175.7 (3)
C11—C12—C13—C14	0.6 (5)	O7—N8—C30—C29	155.6 (4)
C12—C13—C14—C15	-0.2 (6)	O6—N8—C30—C29	-25.2 (5)
C13—C14—C15—C16	-0.1 (5)	O7—N8—C30—C25	-26.1 (5)
C12—C11—C16—N3	178.7 (3)	O6—N8—C30—C25	153.1 (3)

*Hydrogen-bond geometry (Å, °)*

<i>D—H...A</i>	<i>D—H</i>	<i>H...A</i>	<i>D...A</i>	<i>D—H...A</i>
N3—H3N...N1	0.92	1.85	2.715 (8)	157