

Acta Crystallographica Section E

Structure Reports

Online

ISSN 1600-5368

 [(5-Bromo-1*H*-indol-3-yl)methyl]-
dimethylazanium nitrate

Qing Wang,* Zhong-Ye Fu, Xia Li and Liang-Min Yu

 Education Ministry Key Laboratory of Marine Chemistry and Technology, Ocean University of China, Qingdao, People's Republic of China
 Correspondence e-mail: crystalshuai@yahoo.com.cn

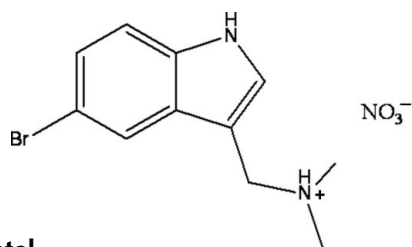
Received 17 May 2011; accepted 26 May 2011

 Key indicators: single-crystal X-ray study; $T = 150$ K; mean $\sigma(\text{C}-\text{C}) = 0.006$ Å; R factor = 0.034; wR factor = 0.088; data-to-parameter ratio = 10.7.

In the title compound, $\text{C}_{11}\text{H}_{14}\text{BrN}_2^+\cdot\text{NO}_3^-$, intermolecular $\text{N}-\text{H}\cdots\text{O}$ and $\text{N}-\text{H}\cdots\text{N}$ hydrogen bonds link the protonated 5-bromogranine cation and the nitrate anions. Further $\text{N}-\text{H}\cdots\text{O}$ hydrogen bonds link the cation-anion pairs into a chain running parallel to [100]. $\text{C}-\text{H}\cdots\text{O}$ hydrogen bonds link the chains, forming a layer parallel to (001).

Related literature

For background to granine ramification, see: Kon-ya *et al.* (1994); Rie *et al.* (1996); Li *et al.* (2008, 2009). For a related structure, see: Golubev & Kondrashev (1984).



Experimental

Crystal data

$\text{C}_{11}\text{H}_{14}\text{BrN}_2^+\cdot\text{NO}_3^-$	$V = 1300.46$ (5) Å ³
$M_r = 316.16$	$Z = 4$
Orthorhombic, $P2_12_12_1$	Cu $K\alpha$ radiation
$a = 9.1449$ (2) Å	$\mu = 4.38$ mm ⁻¹
$b = 10.8270$ (3) Å	$T = 150$ K
$c = 13.1344$ (3) Å	$0.50 \times 0.42 \times 0.40$ mm

Data collection

Agilent Gemini S Ultra CCD diffractometer	1713 reflections with $I > 2\sigma(I)$
2543 measured reflections	$R_{\text{int}} = 0.022$
1760 independent reflections	$\theta_{\text{max}} = 62.4^\circ$

Refinement

$R[F^2 > 2\sigma(F^2)] = 0.034$	$\Delta\rho_{\text{max}} = 0.60$ e Å ⁻³
$wR(F^2) = 0.088$	$\Delta\rho_{\text{min}} = -0.77$ e Å ⁻³
$S = 1.07$	Absolute structure: Flack (1983), 546 Friedel pairs
1760 reflections	Flack parameter: -0.01 (3)
164 parameters	
H-atom parameters constrained	

Table 1

Hydrogen-bond geometry (Å, °).

$D-\text{H}\cdots A$	$D-\text{H}$	$\text{H}\cdots A$	$D\cdots A$	$D-\text{H}\cdots A$
$\text{N1}-\text{H1}\cdots\text{O2}$	0.91	2.24	3.041 (4)	146
$\text{N1}-\text{H1}\cdots\text{O3}$	0.91	2.03	2.857 (4)	151
$\text{N1}-\text{H1}\cdots\text{N3}$	0.91	2.49	3.391 (5)	169
$\text{N2}-\text{H2D}\cdots\text{O2}^{\text{i}}$	0.86	2.12	2.902 (4)	152
$\text{N2}-\text{H2D}\cdots\text{O1}^{\text{i}}$	0.86	2.65	3.388 (4)	144
$\text{C1}-\text{H1B}\cdots\text{O3}^{\text{ii}}$	0.96	2.45	3.293 (5)	146
$\text{C3}-\text{H3B}\cdots\text{O3}^{\text{ii}}$	0.97	2.40	3.259 (5)	147

 Symmetry codes: (i) $x - 1, y, z$; (ii) $-x, y + \frac{1}{2}, -z + \frac{1}{2}$.

Data collection: *CrysAlis PRO* (Agilent, 2010); cell refinement: *CrysAlis PRO*; data reduction: *CrysAlis PRO*; program(s) used to solve structure: *SHELXS97* (Sheldrick, 2008); program(s) used to refine structure: *SHELXL97* (Sheldrick, 2008); molecular graphics: *ORTEP-III* (Burnett & Johnson, 1996), *ORTEP-3 for Windows* (Farrugia, 1999) and *PLATON* (Spek, 2009); software used to prepare material for publication: *SHELXL97*.

We acknowledge the support of the Postdoctoral Innovation Foundation of Shandong Province, the National Natural Science Foundation of China (No. 51003099) and the Special Foundation for Young Teachers of Ocean University of China (No. 201013017).

Supplementary data and figures for this paper are available from the IUCr electronic archives (Reference: DN2690).

References

- Agilent (2010). *CrysAlis PRO*. Agilent Technologies Ltd, Yarnton, England.
 Burnett, M. N. & Johnson, C. K. (1996). *ORTEP-III*. Report ORNL-6895. Oak Ridge National Laboratory, Tennessee, USA.
 Farrugia, L. J. (1999). *J. Appl. Cryst.* **32**, 837–838.
 Flack, H. D. (1983). *Acta Cryst.* **A39**, 876–881.
 Kon-ya, K., Shimidzu, N., Adachi, K. & Miki, W. (1994). *Fish. Sci.* **60**, 773–775.
 Golubev, S. N. & Kondrashev, Yu. D. (1984). *Zh. Strukt. Khim.*, **25**, 145–149.
 Li, X., Yu, L.-M., Jiang, X.-H., Xia, S.-W. & Zhao, H.-Z. (2009). *Chin. J. Oceanol. Limnol.* **27**, 309–316.
 Li, X., Yu, L.-M., Wang, B.-J., Xia, S.-W. & Zhao, H.-Z. (2008). *Acta Chem. Sinica*, **66**, 2507–2512.
 Rie, H., Hideo, O., Atsuya, M., Hideo, O., Mamoru, E., Wataru, M. & Kazumi, K. (1996). *Chem. Abstr.* **124**, 343108.
 Sheldrick, G. M. (2008). *Acta Cryst.* **A64**, 112–122.
 Spek, A. L. (2009). *Acta Cryst.* **D65**, 148–155.

supporting information

Acta Cryst. (2011). E67, o1671 [doi:10.1107/S1600536811020034]

[(5-Bromo-1*H*-indol-3-yl)methyl]dimethylazanium nitrate

Qing Wang, Zhong-Ye Fu, Xia Li and Liang-Min Yu

S1. Comment

Recently, gramine ramification was shown to be very efficient in preventing recruitment of larval settlement. Many compounds such as 2,5,6-Tribromo-1-methylgramine (Kon-ya *et al.*, 1994; Li *et al.*, 2008; Li *et al.* 2009) and 5,6-dichlorogramine (Rie *et al.*, 1996) have been reported. Here we report the synthesis and structure of the title compound (I).

The asymmetric unit contains one protonated 5-bromo-gramine and one NO_3^- anion linked by a bifurcated $\text{N—H}\cdots\text{O}$ hydrogen bonds (Table 1, Fig. 1). Furthermore, intermolecular $\text{N—H}\cdots\text{O}$ hydrogen bonds link the cation-anion couple to form a one-dimensional chain running parallel to the [100] direction (Table 1). These chains are further connected through $\text{C—H}\cdots\text{O}$ hydrogen bonds to form layer parallel to the (0 0 1) plane (Table 1, Fig. 2).

S2. Experimental

$\text{Eu}(\text{NO}_3)_3 \cdot 6\text{H}_2\text{O}$ (0.2 mmol, 0.0892 g) was dissolved in CH_3OH (5 ml), and then carefully layered onto a solution of 5-BrG (0.2 mmol, 0.0504 g) in $\text{C}_2\text{H}_5\text{OH}$ (5 ml). After the solvent was evaporated to almost dry, pale-yellow block crystals suitable for X-ray analysis could be harvested.

For (I): $\text{C}_{11}\text{H}_{14}\text{BrN}_3\text{O}_3$ (316.15, %): calcd. C 41.97, H 2.716, N 12.95; found C 41.79, H 4.46, N 13.29.

X-ray powder diffraction pattern was recorded to check the solid-state phase purity of the bulky sample of compound (I). Supplementary Figure 3 shows the measured pattern and the simulated one on the basis of single-crystal analysis result.

S3. Refinement

All H atoms attached to C and N atoms were fixed geometrically and treated as riding with $\text{C—H} = 0.93 \text{ \AA}$ (aromatic), 0.96 \AA (methyl) or 0.97 \AA (methylene) and $\text{N—H} = 0.86 \text{ \AA}$ (amido) or 0.91 \AA (amonium) with $U_{\text{iso}}(\text{H}) = 1.2U_{\text{eq}}(\text{C}_{\text{aromatic}}$, $\text{C}_{\text{methylene}}$ or $\text{N})$ or $U_{\text{iso}}(\text{H}) = 1.5U_{\text{eq}}(\text{C}_{\text{methyl}})$.

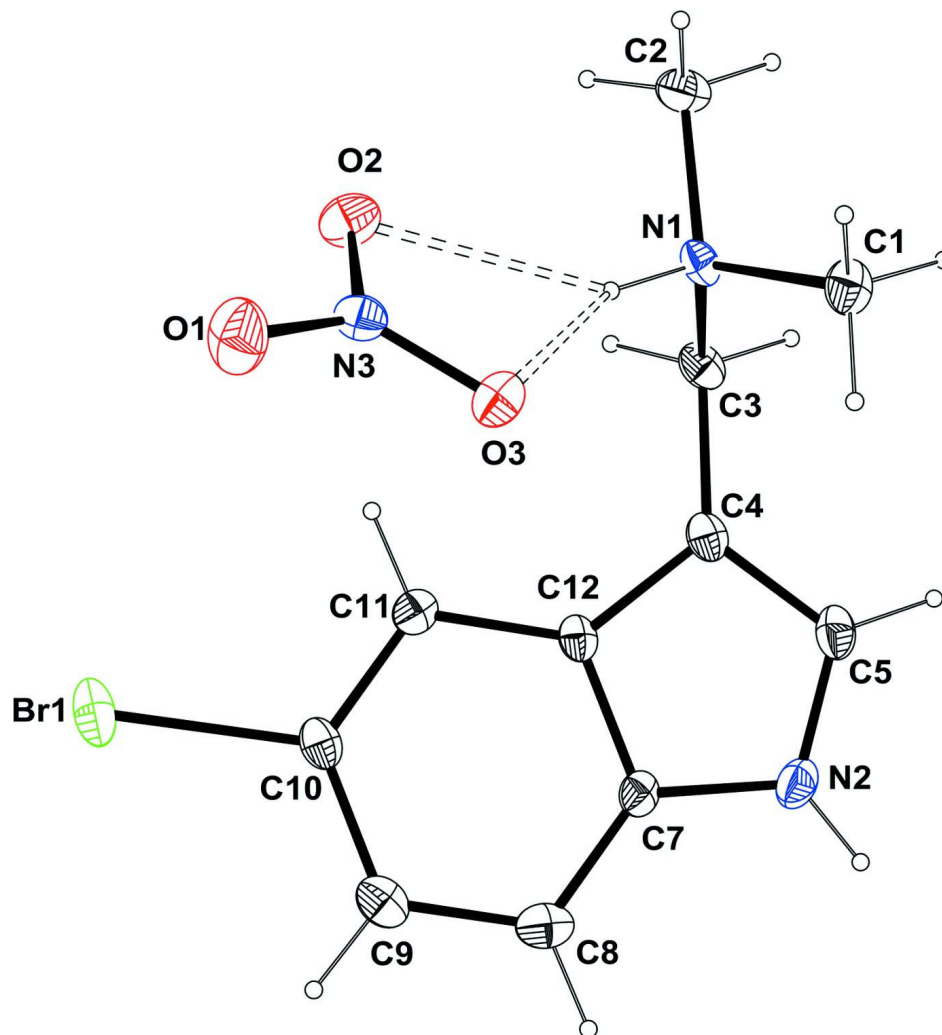


Figure 1

A view of the molecule of (I), showing the atom-labelling scheme. Displacement ellipsoids are drawn at the 30% probability level. H atoms are represented as small spheres of arbitrary radii. Hydrogen bonds are shown as dashed lines.

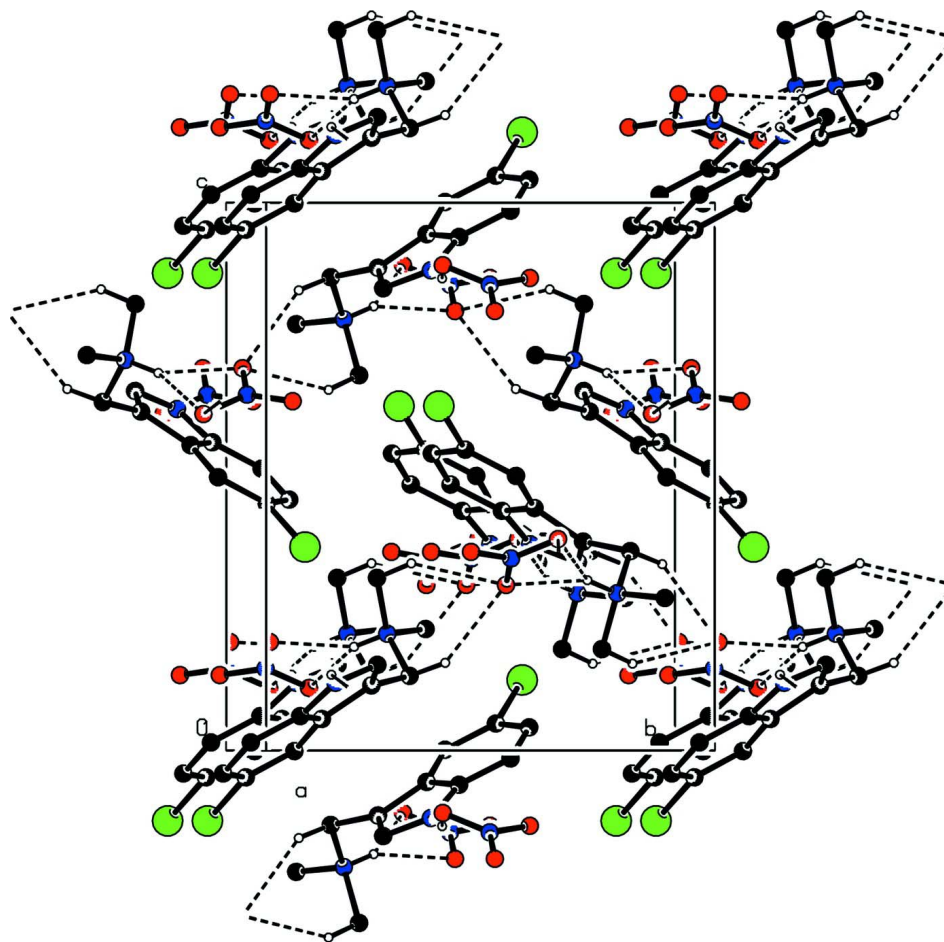


Figure 2

Packing view of (I), showing the two-dimensional hydrogen-bonding layer. Hydrogen bonds are shown as dashed lines. H atoms not involved in hydrogen bondings have been omitted for clarity.

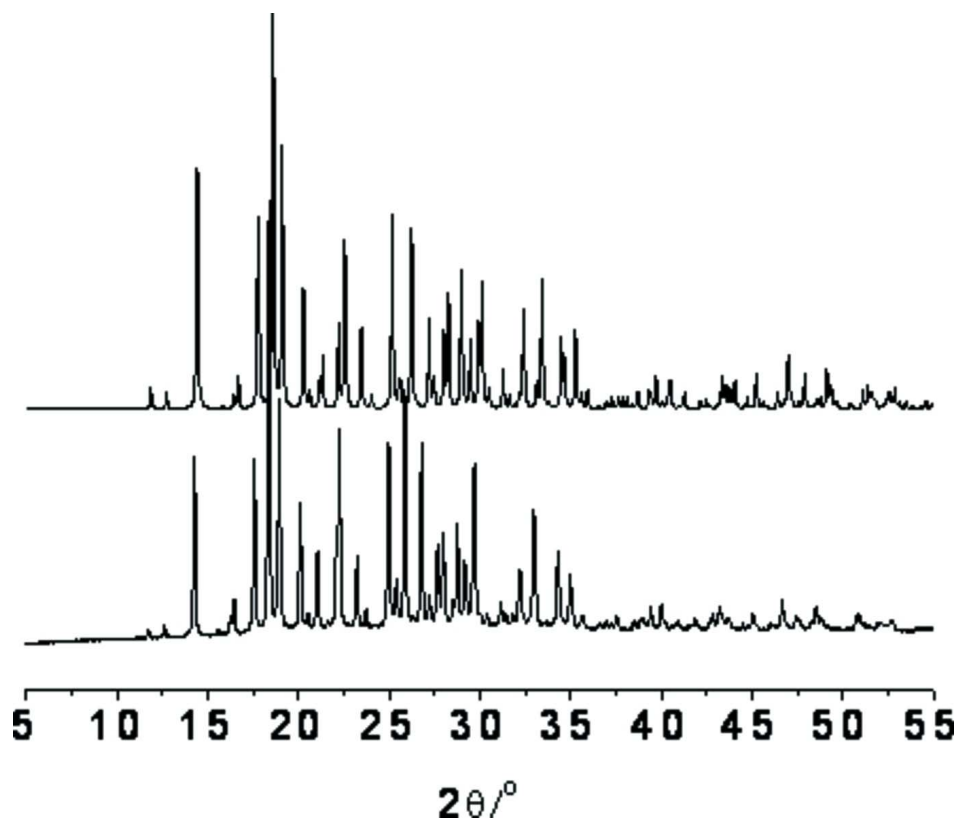


Figure 3

The simulated X-ray powder diffraction pattern (upper) and the measured one (lower).

[(5-Bromo-1*H*-indol-3-yl)methyl]dimethylazanium nitrate

Crystal data

$C_{11}H_{14}BrN_2^+NO_3^-$

$M_r = 316.16$

Orthorhombic, $P2_12_12_1$

Hall symbol: P 2ac 2ab

$a = 9.1449$ (2) Å

$b = 10.8270$ (3) Å

$c = 13.1344$ (3) Å

$V = 1300.46$ (5) Å³

$Z = 4$

$F(000) = 640$

$D_x = 1.615$ Mg m⁻³

Cu $K\alpha$ radiation, $\lambda = 1.54178$ Å

Cell parameters from 2128 reflections

$\theta = 3.4$ – 62.3°

$\mu = 4.38$ mm⁻¹

$T = 150$ K

Block, yellow

$0.50 \times 0.42 \times 0.40$ mm

Data collection

Agilent Gemini S Ultra CCD
diffractometer

Radiation source: fine-focus sealed tube

Graphite monochromator

Detector resolution: 16.0855 pixels mm⁻¹

φ and ω scans

2543 measured reflections

1760 independent reflections

1713 reflections with $I > 2\sigma(I)$

$R_{int} = 0.022$

$\theta_{max} = 62.4^\circ$, $\theta_{min} = 5.3^\circ$

$h = -10 \rightarrow 10$

$k = -12 \rightarrow 11$

$l = -14 \rightarrow 13$

*Refinement*Refinement on F^2

Least-squares matrix: full

 $R[F^2 > 2\sigma(F^2)] = 0.034$ $wR(F^2) = 0.088$ $S = 1.07$

1760 reflections

164 parameters

0 restraints

Primary atom site location: structure-invariant
direct methodsSecondary atom site location: difference Fourier
mapHydrogen site location: inferred from
neighbouring sites

H-atom parameters constrained

 $w = 1/[\sigma^2(F_o^2) + (0.0583P)^2]$ where $P = (F_o^2 + 2F_c^2)/3$ $(\Delta/\sigma)_{\max} = 0.004$ $\Delta\rho_{\max} = 0.60 \text{ e } \text{\AA}^{-3}$ $\Delta\rho_{\min} = -0.77 \text{ e } \text{\AA}^{-3}$ Extinction correction: *SHELXL97* (Sheldrick,
2008), $F_c^* = kF_c[1 + 0.001x F_c^2 \lambda^3 / \sin(2\theta)]^{-1/4}$

Extinction coefficient: 0.0131 (7)

Absolute structure: Flack (1983), 546 Friedel
pairsAbsolute structure parameter: -0.01 (3)*Special details*

Geometry. All e.s.d.'s (except the e.s.d. in the dihedral angle between two l.s. planes) are estimated using the full covariance matrix. The cell e.s.d.'s are taken into account individually in the estimation of e.s.d.'s in distances, angles and torsion angles; correlations between e.s.d.'s in cell parameters are only used when they are defined by crystal symmetry. An approximate (isotropic) treatment of cell e.s.d.'s is used for estimating e.s.d.'s involving l.s. planes.

Refinement. Refinement of F^2 against ALL reflections. The weighted R -factor wR and goodness of fit S are based on F^2 , conventional R -factors R are based on F , with F set to zero for negative F^2 . The threshold expression of $F^2 > \sigma(F^2)$ is used only for calculating R -factors(gt) *etc.* and is not relevant to the choice of reflections for refinement. R -factors based on F^2 are statistically about twice as large as those based on F , and R -factors based on ALL data will be even larger.

Fractional atomic coordinates and isotropic or equivalent isotropic displacement parameters (\AA^2)

	x	y	z	$U_{\text{iso}}^*/U_{\text{eq}}$
Br1	0.08934 (5)	0.37702 (4)	0.62866 (4)	0.0393 (2)
N1	0.0708 (3)	0.7763 (3)	0.2870 (2)	0.0218 (7)
H1	0.1132	0.7060	0.3108	0.026*
N2	-0.3723 (3)	0.6214 (3)	0.3766 (2)	0.0293 (8)
H2D	-0.4617	0.6044	0.3618	0.035*
C1	0.0076 (5)	0.7478 (4)	0.1850 (3)	0.0286 (9)
H1A	0.0844	0.7227	0.1396	0.043*
H1B	-0.0396	0.8201	0.1584	0.043*
H1C	-0.0625	0.6823	0.1914	0.043*
C2	0.1875 (4)	0.8720 (4)	0.2783 (3)	0.0308 (9)
H2A	0.2598	0.8452	0.2302	0.046*
H2B	0.2325	0.8840	0.3436	0.046*
H2C	0.1451	0.9483	0.2557	0.046*
C3	-0.0444 (4)	0.8157 (4)	0.3639 (3)	0.0254 (8)
H3A	0.0033	0.8342	0.4281	0.030*
H3B	-0.0909	0.8909	0.3401	0.030*
C4	-0.1584 (4)	0.7205 (4)	0.3813 (3)	0.0238 (8)
C5	-0.2987 (4)	0.7213 (4)	0.3437 (3)	0.0285 (9)
H5A	-0.3371	0.7822	0.3015	0.034*
C7	-0.2829 (4)	0.5507 (4)	0.4374 (3)	0.0218 (8)
C8	-0.3083 (5)	0.4384 (4)	0.4854 (3)	0.0284 (10)
H8A	-0.3982	0.3989	0.4796	0.034*

C9	-0.1965 (5)	0.3868 (4)	0.5421 (3)	0.0282 (9)
H9A	-0.2104	0.3119	0.5753	0.034*
C10	-0.0612 (4)	0.4490 (4)	0.5491 (3)	0.0245 (9)
C11	-0.0335 (4)	0.5599 (4)	0.5012 (3)	0.0225 (9)
H11A	0.0564	0.5992	0.5075	0.027*
C12	-0.1466 (4)	0.6110 (4)	0.4426 (3)	0.0200 (8)
N3	0.2674 (4)	0.5222 (3)	0.3505 (2)	0.0261 (8)
O1	0.3385 (4)	0.4266 (3)	0.3625 (3)	0.0462 (8)
O2	0.3106 (3)	0.6231 (3)	0.3859 (2)	0.0337 (7)
O3	0.1487 (3)	0.5214 (3)	0.3021 (2)	0.0309 (7)

Atomic displacement parameters (Å²)

	U^{11}	U^{22}	U^{33}	U^{12}	U^{13}	U^{23}
Br1	0.0454 (3)	0.0422 (3)	0.0301 (3)	0.0153 (2)	-0.0037 (2)	0.0094 (2)
N1	0.0305 (17)	0.0202 (15)	0.0147 (15)	0.0011 (16)	-0.0007 (14)	0.0015 (13)
N2	0.0227 (16)	0.045 (2)	0.0204 (16)	-0.0014 (16)	-0.0035 (14)	-0.001 (2)
C1	0.034 (2)	0.034 (2)	0.0178 (19)	0.001 (2)	-0.0023 (18)	-0.0059 (19)
C2	0.034 (2)	0.031 (2)	0.027 (2)	-0.008 (2)	0.0046 (17)	0.000 (2)
C3	0.035 (2)	0.0237 (18)	0.0174 (18)	0.0000 (17)	0.0033 (19)	-0.0012 (18)
C4	0.0308 (18)	0.0285 (19)	0.0122 (17)	0.0027 (17)	0.0021 (17)	-0.0017 (18)
C5	0.031 (2)	0.036 (2)	0.019 (2)	0.006 (2)	-0.0016 (16)	0.0021 (18)
C7	0.0233 (19)	0.030 (2)	0.0122 (17)	-0.0002 (18)	-0.0003 (16)	-0.0036 (17)
C8	0.033 (2)	0.033 (2)	0.0193 (19)	-0.009 (2)	0.0079 (17)	-0.0092 (19)
C9	0.039 (2)	0.026 (2)	0.0192 (19)	0.001 (2)	0.0065 (17)	-0.0019 (19)
C10	0.032 (2)	0.026 (2)	0.0149 (17)	0.0044 (18)	0.0018 (17)	0.0002 (17)
C11	0.0241 (19)	0.029 (2)	0.0146 (17)	-0.0013 (18)	0.0012 (16)	-0.0061 (17)
C12	0.0239 (17)	0.0251 (19)	0.0109 (16)	0.0044 (18)	0.0033 (14)	-0.0020 (17)
N3	0.0270 (17)	0.0253 (18)	0.0260 (18)	-0.0015 (16)	0.0049 (16)	0.0003 (16)
O1	0.0495 (18)	0.0319 (16)	0.057 (2)	0.0126 (15)	-0.0092 (19)	-0.0028 (18)
O2	0.0329 (15)	0.0293 (14)	0.0390 (17)	-0.0046 (13)	-0.0007 (13)	-0.0093 (17)
O3	0.0260 (14)	0.0357 (16)	0.0311 (15)	0.0003 (14)	-0.0033 (13)	-0.0038 (14)

Geometric parameters (Å, °)

Br1—C10	1.896 (4)	C3—H3B	0.9700
N1—C1	1.491 (5)	C4—C5	1.375 (5)
N1—C2	1.492 (5)	C4—C12	1.437 (6)
N1—C3	1.521 (5)	C5—H5A	0.9300
N1—H1	0.9100	C7—C8	1.389 (6)
N2—C5	1.345 (6)	C7—C12	1.408 (5)
N2—C7	1.376 (5)	C8—C9	1.382 (6)
N2—H2D	0.8600	C8—H8A	0.9300
C1—H1A	0.9600	C9—C10	1.412 (6)
C1—H1B	0.9600	C9—H9A	0.9300
C1—H1C	0.9600	C10—C11	1.379 (6)
C2—H2A	0.9600	C11—C12	1.403 (5)
C2—H2B	0.9600	C11—H11A	0.9300

C2—H2C	0.9600	N3—O1	1.232 (4)
C3—C4	1.484 (5)	N3—O2	1.251 (4)
C3—H3A	0.9700	N3—O3	1.258 (4)
C1—N1—C2	110.6 (3)	C5—C4—C12	106.1 (3)
C1—N1—C3	112.8 (3)	C5—C4—C3	126.6 (4)
C2—N1—C3	110.5 (3)	C12—C4—C3	127.3 (3)
C1—N1—H1	107.6	N2—C5—C4	110.3 (4)
C2—N1—H1	107.6	N2—C5—H5A	124.9
C3—N1—H1	107.6	C4—C5—H5A	124.9
C5—N2—C7	109.7 (3)	N2—C7—C8	130.7 (4)
C5—N2—H2D	125.2	N2—C7—C12	107.2 (3)
C7—N2—H2D	125.2	C8—C7—C12	122.1 (4)
N1—C1—H1A	109.5	C9—C8—C7	118.3 (4)
N1—C1—H1B	109.5	C9—C8—H8A	120.8
H1A—C1—H1B	109.5	C7—C8—H8A	120.8
N1—C1—H1C	109.5	C8—C9—C10	119.4 (4)
H1A—C1—H1C	109.5	C8—C9—H9A	120.3
H1B—C1—H1C	109.5	C10—C9—H9A	120.3
N1—C2—H2A	109.5	C11—C10—C9	123.1 (4)
N1—C2—H2B	109.5	C11—C10—Br1	118.4 (3)
H2A—C2—H2B	109.5	C9—C10—Br1	118.5 (3)
N1—C2—H2C	109.5	C10—C11—C12	117.3 (4)
H2A—C2—H2C	109.5	C10—C11—H11A	121.4
H2B—C2—H2C	109.5	C12—C11—H11A	121.4
C4—C3—N1	113.2 (3)	C11—C12—C7	119.7 (4)
C4—C3—H3A	108.9	C11—C12—C4	133.5 (4)
N1—C3—H3A	108.9	C7—C12—C4	106.8 (3)
C4—C3—H3B	108.9	O1—N3—O2	121.3 (3)
N1—C3—H3B	108.9	O1—N3—O3	121.0 (3)
H3A—C3—H3B	107.8	O2—N3—O3	117.8 (3)
C1—N1—C3—C4	59.5 (4)	C8—C9—C10—Br1	179.3 (3)
C2—N1—C3—C4	-176.1 (3)	C9—C10—C11—C12	-0.5 (5)
N1—C3—C4—C5	-103.6 (4)	Br1—C10—C11—C12	179.8 (3)
N1—C3—C4—C12	78.1 (5)	C10—C11—C12—C7	2.0 (5)
C7—N2—C5—C4	0.0 (5)	C10—C11—C12—C4	-178.5 (4)
C12—C4—C5—N2	-0.3 (4)	N2—C7—C12—C11	179.2 (3)
C3—C4—C5—N2	-178.8 (4)	C8—C7—C12—C11	-2.7 (5)
C5—N2—C7—C8	-177.6 (4)	N2—C7—C12—C4	-0.5 (4)
C5—N2—C7—C12	0.3 (4)	C8—C7—C12—C4	177.7 (3)
N2—C7—C8—C9	179.4 (4)	C5—C4—C12—C11	-179.1 (4)
C12—C7—C8—C9	1.7 (6)	C3—C4—C12—C11	-0.6 (7)
C7—C8—C9—C10	-0.2 (6)	C5—C4—C12—C7	0.5 (4)
C8—C9—C10—C11	-0.4 (6)	C3—C4—C12—C7	179.0 (4)

Hydrogen-bond geometry (Å, °)

<i>D</i> —H··· <i>A</i>	<i>D</i> —H	H··· <i>A</i>	<i>D</i> ··· <i>A</i>	<i>D</i> —H··· <i>A</i>
N1—H1···O2	0.91	2.24	3.041 (4)	146
N1—H1···O3	0.91	2.03	2.857 (4)	151
N1—H1···N3	0.91	2.49	3.391 (5)	169
N2—H2D···O2 ⁱ	0.86	2.12	2.902 (4)	152
N2—H2D···O1 ⁱ	0.86	2.65	3.388 (4)	144
C1—H1B···O3 ⁱⁱ	0.96	2.45	3.293 (5)	146
C3—H3B···O3 ⁱⁱ	0.97	2.40	3.259 (5)	147

Symmetry codes: (i) $x-1, y, z$; (ii) $-x, y+1/2, -z+1/2$.