

Acta Crystallographica Section E

Structure Reports

Online

ISSN 1600-5368

Tetraquatetrakis(4,4'-bipyridine dioxido-κO)terbium(III) octacyanidomolybdate(V)

Su-Yan Qian and Ai-Hua Yuan*

School of Biological and Chemical Engineering, Jiangsu University of Science and Technology, Zhenjiang 212003, People's Republic of China

Correspondence e-mail: aihuayuan@163.com

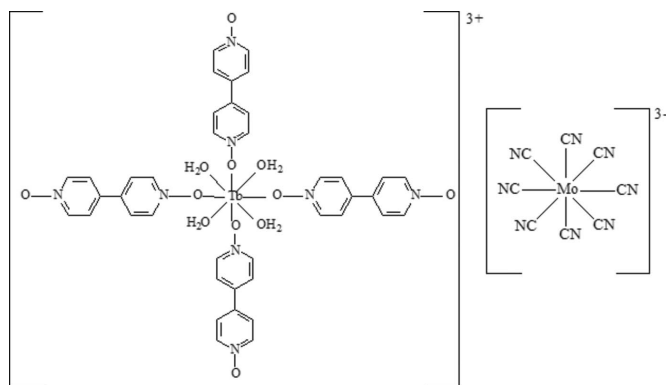
Received 30 March 2011; accepted 26 May 2011

 Key indicators: single-crystal X-ray study; $T = 291$ K; mean $\sigma(\text{C}-\text{C}) = 0.002$ Å; R factor = 0.016; wR factor = 0.043; data-to-parameter ratio = 16.5.

In the title compound, $[\text{Tb}(\text{C}_{10}\text{H}_8\text{N}_2\text{O}_2)_4(\text{H}_2\text{O})_4][\text{Mo}(\text{CN})_8]$, both metal atoms are eight-coordinated. The Tb^{III} atom displays a dodecahedral geometry, while the Mo^{V} ion exhibits a distorted square-antiprismatic geometry. The Tb atoms are located on a special position of site symmetry $\bar{4}$, whereas the Mo atoms are located on a twofold rotation axis. The cations are linked by $\text{O}-\text{H}\cdots\text{O}$ hydrogen bonds.

Related literature

For general background to octacyanidometallate-based complexes involving lanthanide ions, see: Chelebaeva *et al.* (2009); Ma *et al.* (2009); Qian *et al.* (2010); Wang *et al.* (2006); Zhou *et al.* (2010). For the preparation of the title compound, see: Bok *et al.* (1975). For related structures, see: Koziel *et al.* (2010); Przychodzeń *et al.* (2007).



Experimental

Crystal data

| | |
|--|--|
| $[\text{Tb}(\text{C}_{10}\text{H}_8\text{N}_2\text{O}_2)_4(\text{H}_2\text{O})_4]$ $[\text{Mo}(\text{CN})_8]$ | $V = 2533.7(2) \text{ \AA}^3$ $Z = 2$ Mo $K\alpha$ radiation $\mu = 1.71 \text{ mm}^{-1}$ $T = 291 \text{ K}$ $0.22 \times 0.21 \times 0.12 \text{ mm}$ |
| $M_r = 1287.72$ | |
| Tetragonal, $P4/n$ | |
| $a = 17.9226(7) \text{ \AA}$ | |
| $c = 7.8877(6) \text{ \AA}$ | |

Data collection

| | |
|--|--|
| Bruker SMART APEX CCD diffractometer | 21243 measured reflections 2921 independent reflections |
| Absorption correction: multi-scan (SADABS; Bruker, 2004) | 2730 reflections with $I > 2\sigma(I)$ $R_{\text{int}} = 0.026$ |
| $T_{\text{min}} = 0.693$, $T_{\text{max}} = 0.843$ | |

Refinement

| | |
|---------------------------------|--|
| $R[F^2 > 2\sigma(F^2)] = 0.016$ | 177 parameters |
| $wR(F^2) = 0.043$ | H-atom parameters constrained |
| $S = 1.08$ | $\Delta\rho_{\text{max}} = 0.36 \text{ e \AA}^{-3}$ |
| 2921 reflections | $\Delta\rho_{\text{min}} = -0.29 \text{ e \AA}^{-3}$ |

Table 1

Hydrogen-bond geometry (Å, °).

| $D-\text{H}\cdots A$ | $D-\text{H}$ | $\text{H}\cdots A$ | $D\cdots A$ | $D-\text{H}\cdots A$ |
|--|--------------|--------------------|-------------|----------------------|
| $\text{O3}-\text{H3WA}\cdots\text{O2}^{\text{i}}$ | 0.83 | 1.85 | 2.6702 (15) | 169 |
| $\text{O3}-\text{H3WB}\cdots\text{O2}^{\text{ii}}$ | 0.84 | 1.92 | 2.7417 (16) | 164 |

 Symmetry codes: (i) $-y + \frac{1}{2}, x, z + 1$; (ii) $x + \frac{1}{2}, y + \frac{1}{2}, -z$.

Data collection: SMART (Bruker, 2004); cell refinement: SAINT (Bruker, 2004); data reduction: SAINT; program(s) used to solve structure: SHELXS97 (Sheldrick, 2008); program(s) used to refine structure: SHELXL97 (Sheldrick, 2008); molecular graphics: DIAMOND (Brandenburg, 2006); software used to prepare material for publication: SHELXTL (Sheldrick, 2008).

The work was supported by the Project of the Priority Academic Program Development of Jiangsu Higher Education Institutions.

Supplementary data and figures for this paper are available from the IUCr electronic archives (Reference: BT5505).

References

- Bok, L. D. C., Leipoldt, J. G. & Basson, S. S. (1975). *Z. Anorg. Allg. Chem.* **415**, 81–83.
- Brandenburg, K. (2006). *DIAMOND*. Crystal Impact GbR, Bonn, Germany.
- Bruker (2004). *SMART*, *SAINTE* and *SADABS*. Bruker AXS Inc., Madison, Wisconsin, USA.
- Chelebaeva, E., Larionova, J., Guari, Y., Ferreira, R. A. S., Carlos, L. D., Paz, F. A. A., Trifonov, A. & Guérin, C. (2009). *Inorg. Chem.* **48**, 5983–5995.
- Koziel, M., Pełka, R., Rams, M., Nitek, W. & Sieklucka, B. (2010). *Inorg. Chem.* **49**, 4268–4277.
- Ma, S. L., Ren, S., Ma, Y. & Liao, D. Z. (2009). *J. Chem. Sci.* **121**, 421–427.
- Przychodzeń, P., Pełka, R., Lewiński, K., Supel, J., Rams, M., Tomala, K. & Sieklucka, B. (2007). *Inorg. Chem.* **46**, 8924–8938.
- Qian, S. Y., Zhou, H., Zhang, Y. & Yuan, A. H. (2010). *Z. Anorg. Allg. Chem.* **636**, 2671–2674.
- Sheldrick, G. M. (2008). *Acta Cryst.* **A64**, 112–122.
- Wang, Z. X., Shen, X. F., Wang, J., Zhang, P., Li, Y. Z., Nfor, E. N., Song, Y., Ohkoshi, S., Hashimoto, K. & You, X. Z. (2006). *Angew. Chem. Int. Ed.* **45**, 3287–3291.
- Zhou, H., Yuan, A. H., Qian, S. Y., Song, Y. & Diao, G. W. (2010). *Inorg. Chem.* **49**, 5971–5976.

supporting information

Acta Cryst. (2011). E67, m845 [doi:10.1107/S1600536811020022]

Tetraquatetrakis(4,4'-bipyridine dioxide- κ O)terbium(III) octacyanomolybdate(V)

Su-Yan Qian and Ai-Hua Yuan

S1. Comment

In the past few years, octacyanometallate-based complexes have attracted considerable attention in the field of cyanide-bridged hetero-metallic system. Many assemblies based on $[M^V(CN)_8]^{3-}$ ($M = Mo$ or W) and lanthanide ions can take a variety of structures (Chelebaeva *et al.*, 2009; Koziel *et al.*, 2010; Ma *et al.*, 2009; Przychodzeń *et al.*, 2007; Qian *et al.*, 2010; Wang *et al.*, 2006; Zhou *et al.*, 2010). Recently, we have used $[Mo(CN)_8]^{3-}$ as a building block to react with Tb^{3+} and 4,4'-bipyridine dioxide (4,4'-dpdo) obtaining a new ionic complex, $[Tb(4,4'-bpdo)_4(H_2O)_4][Mo(CN)_8]$.

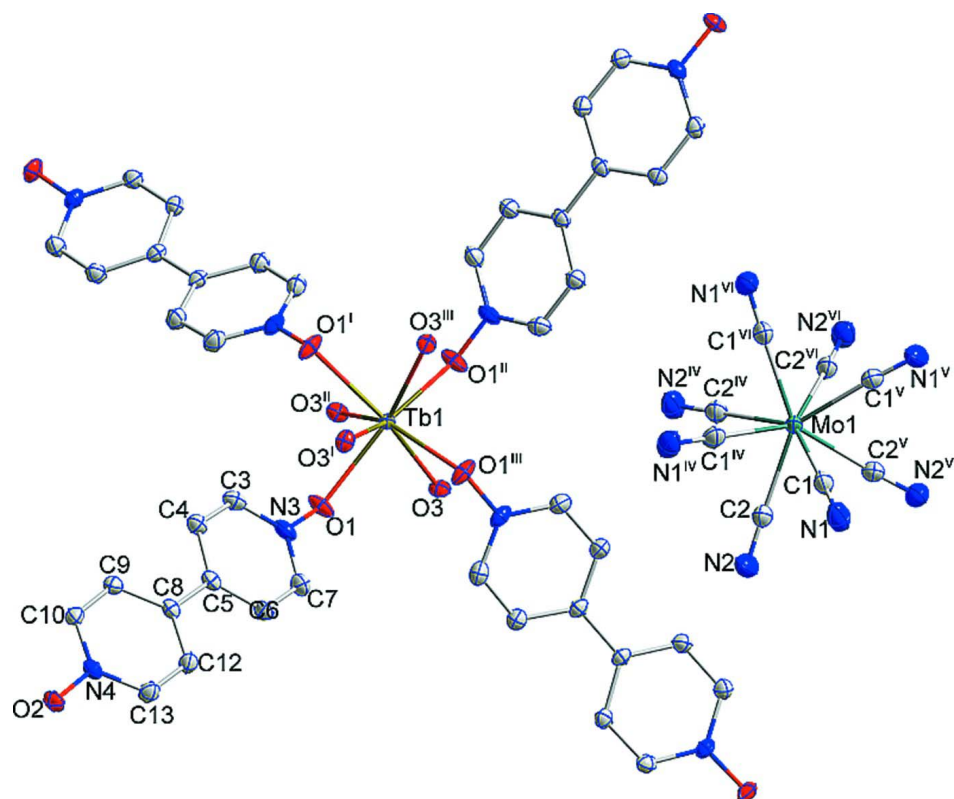
In the structure, the eight-coordinated Tb^{III} center displays a decahedron geometry, while each $[Mo^V(CN)_8]$ moiety exhibits a distorted square antiprismatic geometry. The average values of Mo—C and C—N bond distances are 2.171 and 1.155 Å, respectively, while the Mo—C—N units are nearly linear. The anions are linked by O—H...O hydrogen bonds.

S2. Experimental

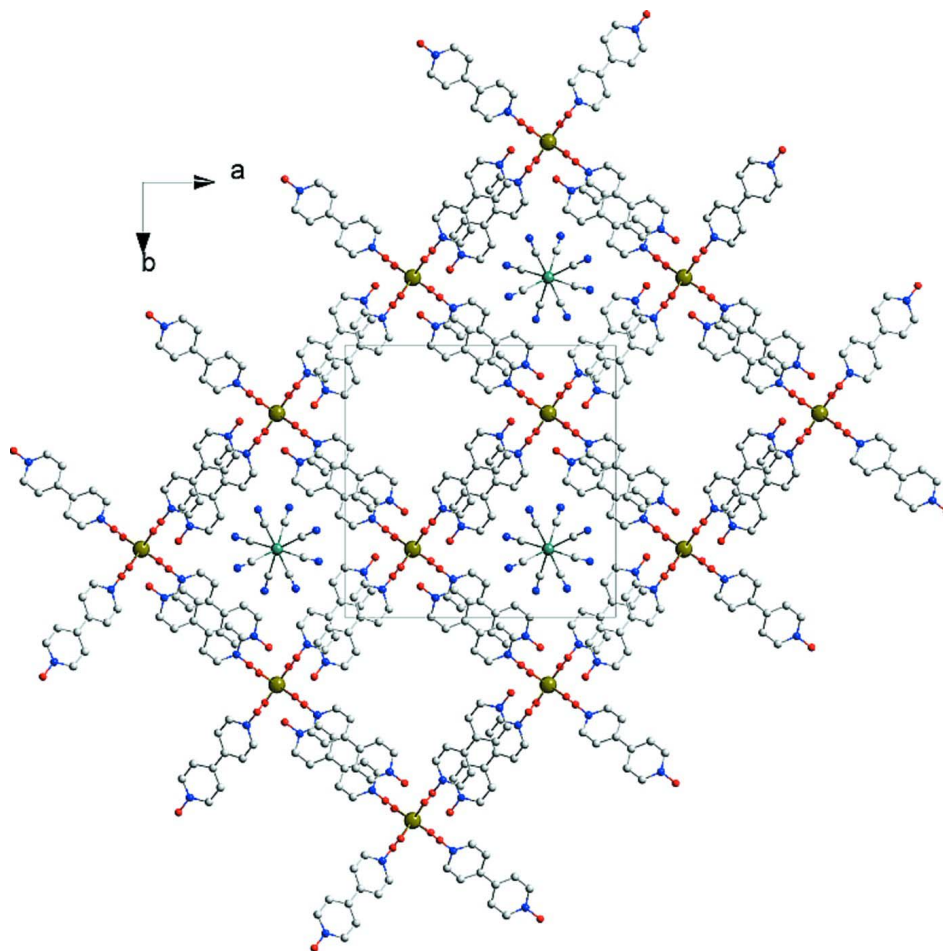
Single crystals of the title compound were prepared at room temperature in the dark by slow diffusion of a H_2O solution (3 ml) containing $Tb(NO_3)_3 \cdot 6H_2O$ (0.05 mmol) and 4,4'-dpdo (0.05 mmol) into a CH_3CN solution (15 ml) of $[HN(n-C_4H_9)_3][Mo(CN)_8] \cdot 4H_2O$ (0.05 mmol) (Bok *et al.*, 1975). After two weeks, yellow block crystals were obtained.

S3. Refinement

The H atoms of 4,4'-bipyridine dioxide ligands were ideally positioned with C—H = 0.93 Å and included in the refinement using a riding model with $U(H)$ set to 1.2 $U_{eq}(C)$. The H atoms bound to oxygen atoms were located from difference maps and refined as riding with $U(H)$ set to 1.2 $U_{eq}(O)$.

**Figure 1**

ORTEP diagram of the title compound. Hydrogen atoms have been omitted for clarity and thermal ellipsoids are presented at the 30% probability level.

**Figure 2**

Perspective view of the title compound in *ab* plane. Hydrogen atoms and coordinated water molecules have been omitted for clarity.

Tetraquatetrakis(4,4'-bipyridine dioxido- κ O)terbium(III) octacyanidomolybdate(V)

Crystal data

$[\text{Tb}(\text{C}_{10}\text{H}_8\text{N}_2\text{O}_2)_4(\text{H}_2\text{O})_4][\text{Mo}(\text{CN})_8]$

$M_r = 1287.72$

Tetragonal, $P4/n$

Hall symbol: $-P\ 4a$

$a = 17.9226(7)\ \text{\AA}$

$c = 7.8877(6)\ \text{\AA}$

$V = 2533.7(2)\ \text{\AA}^3$

$Z = 2$

$F(000) = 1286$

$D_x = 1.688\ \text{Mg m}^{-3}$

Mo $K\alpha$ radiation, $\lambda = 0.71073\ \text{\AA}$

Cell parameters from 9881 reflections

$\theta = 2.3\text{--}27.5^\circ$

$\mu = 1.71\ \text{mm}^{-1}$

$T = 291\ \text{K}$

Block, yellow

$0.22 \times 0.21 \times 0.12\ \text{mm}$

Data collection

Bruker SMART APEX CCD
diffractometer

Graphite monochromator
 φ and ω scans

Absorption correction: multi-scan
(*SADABS*; Bruker, 2004)

$T_{\min} = 0.693$, $T_{\max} = 0.843$

21243 measured reflections

2921 independent reflections

2730 reflections with $I > 2\sigma(I)$
 $R_{\text{int}} = 0.026$
 $\theta_{\text{max}} = 27.5^\circ$, $\theta_{\text{min}} = 1.6^\circ$

$h = -23 \rightarrow 23$
 $k = -23 \rightarrow 23$
 $l = -10 \rightarrow 10$

Refinement

Refinement on F^2
 Least-squares matrix: full
 $R[F^2 > 2\sigma(F^2)] = 0.016$
 $wR(F^2) = 0.043$
 $S = 1.08$
 2921 reflections
 177 parameters
 0 restraints
 Primary atom site location: structure-invariant
 direct methods

Secondary atom site location: difference Fourier
 map
 Hydrogen site location: inferred from
 neighbouring sites
 H-atom parameters constrained
 $w = 1/[\sigma^2(F_o^2) + (0.0183P)^2 + 1.8165P]$
 where $P = (F_o^2 + 2F_c^2)/3$
 $(\Delta/\sigma)_{\text{max}} = 0.001$
 $\Delta\rho_{\text{max}} = 0.36 \text{ e } \text{\AA}^{-3}$
 $\Delta\rho_{\text{min}} = -0.29 \text{ e } \text{\AA}^{-3}$

Special details

Geometry. All e.s.d.'s (except the e.s.d. in the dihedral angle between two l.s. planes) are estimated using the full covariance matrix. The cell e.s.d.'s are taken into account individually in the estimation of e.s.d.'s in distances, angles and torsion angles; correlations between e.s.d.'s in cell parameters are only used when they are defined by crystal symmetry. An approximate (isotropic) treatment of cell e.s.d.'s is used for estimating e.s.d.'s involving l.s. planes.

Refinement. Refinement of F^2 against ALL reflections. The weighted R -factor wR and goodness of fit S are based on F^2 , conventional R -factors R are based on F , with F set to zero for negative F^2 . The threshold expression of $F^2 > \sigma(F^2)$ is used only for calculating R -factors(gt) *etc.* and is not relevant to the choice of reflections for refinement. R -factors based on F^2 are statistically about twice as large as those based on F , and R -factors based on ALL data will be even larger.

Fractional atomic coordinates and isotropic or equivalent isotropic displacement parameters (\AA^2)

| | <i>x</i> | <i>y</i> | <i>z</i> | $U_{\text{iso}}^*/U_{\text{eq}}$ |
|-----|--------------|--------------|---------------|----------------------------------|
| Tb1 | 0.7500 | 0.2500 | 0.0000 | 0.01136 (5) |
| Mo1 | 0.7500 | 0.7500 | -0.24987 (4) | 0.02019 (7) |
| O1 | 0.64962 (6) | 0.17736 (7) | 0.10113 (14) | 0.0251 (3) |
| O2 | 0.27973 (7) | -0.11246 (7) | -0.50459 (14) | 0.0223 (2) |
| O3 | 0.70614 (6) | 0.31664 (6) | 0.24591 (13) | 0.0183 (2) |
| N1 | 0.60473 (10) | 0.81932 (10) | -0.4592 (3) | 0.0422 (4) |
| N2 | 0.59644 (10) | 0.70470 (10) | -0.0373 (3) | 0.0393 (4) |
| N3 | 0.60104 (8) | 0.13848 (8) | 0.00837 (16) | 0.0201 (3) |
| N4 | 0.33441 (7) | -0.07064 (7) | -0.44088 (17) | 0.0176 (2) |
| C1 | 0.65693 (10) | 0.79577 (9) | -0.3922 (3) | 0.0300 (4) |
| C2 | 0.65123 (10) | 0.71973 (9) | -0.1057 (3) | 0.0293 (4) |
| C3 | 0.62224 (9) | 0.07458 (9) | -0.0674 (2) | 0.0234 (3) |
| H3 | 0.6709 | 0.0575 | -0.0537 | 0.028* |
| C4 | 0.57297 (9) | 0.03404 (9) | -0.1648 (2) | 0.0215 (3) |
| H4 | 0.5888 | -0.0098 | -0.2166 | 0.026* |
| C5 | 0.49930 (8) | 0.05822 (8) | -0.1867 (2) | 0.0175 (3) |
| C6 | 0.47918 (9) | 0.12409 (9) | -0.1031 (2) | 0.0248 (3) |
| H6 | 0.4306 | 0.1419 | -0.1129 | 0.030* |
| C7 | 0.53013 (10) | 0.16301 (10) | -0.0063 (2) | 0.0257 (4) |
| H7 | 0.5155 | 0.2064 | 0.0491 | 0.031* |
| C8 | 0.44383 (8) | 0.01450 (8) | -0.28394 (19) | 0.0168 (3) |
| C9 | 0.45913 (8) | -0.05724 (8) | -0.3460 (2) | 0.0182 (3) |

| | | | | |
|------|-------------|--------------|-------------|------------|
| H9 | 0.5070 | -0.0768 | -0.3356 | 0.022* |
| C10 | 0.40389 (8) | -0.09908 (8) | -0.4224 (2) | 0.0189 (3) |
| H10 | 0.4144 | -0.1469 | -0.4613 | 0.023* |
| C12 | 0.37208 (9) | 0.04249 (8) | -0.3126 (2) | 0.0209 (3) |
| H12 | 0.3604 | 0.0907 | -0.2780 | 0.025* |
| C13 | 0.31847 (9) | -0.00028 (9) | -0.3913 (2) | 0.0217 (3) |
| H13 | 0.2712 | 0.0193 | -0.4103 | 0.026* |
| H3WA | 0.6727 | 0.3040 | 0.3134 | 0.033* |
| H3WB | 0.7363 | 0.3368 | 0.3136 | 0.033* |

Atomic displacement parameters (\AA^2)

| | U^{11} | U^{22} | U^{33} | U^{12} | U^{13} | U^{23} |
|-----|-------------|-------------|--------------|-------------|-------------|-------------|
| Tb1 | 0.01183 (5) | 0.01183 (5) | 0.01043 (7) | 0.000 | 0.000 | 0.000 |
| Mo1 | 0.01407 (8) | 0.01407 (8) | 0.03243 (15) | 0.000 | 0.000 | 0.000 |
| O1 | 0.0234 (6) | 0.0348 (6) | 0.0171 (5) | -0.0157 (5) | -0.0019 (5) | -0.0008 (5) |
| O2 | 0.0190 (5) | 0.0247 (6) | 0.0231 (6) | -0.0067 (4) | -0.0023 (4) | -0.0059 (4) |
| O3 | 0.0179 (5) | 0.0232 (5) | 0.0139 (5) | -0.0007 (4) | 0.0019 (4) | -0.0032 (4) |
| N1 | 0.0310 (9) | 0.0290 (8) | 0.0666 (12) | -0.0020 (7) | -0.0123 (9) | 0.0126 (8) |
| N2 | 0.0297 (8) | 0.0313 (8) | 0.0569 (11) | 0.0000 (7) | 0.0099 (8) | 0.0101 (8) |
| N3 | 0.0188 (6) | 0.0246 (7) | 0.0170 (6) | -0.0095 (5) | -0.0005 (5) | 0.0018 (5) |
| N4 | 0.0183 (6) | 0.0198 (6) | 0.0146 (6) | -0.0043 (5) | -0.0004 (5) | -0.0006 (5) |
| C1 | 0.0243 (8) | 0.0195 (8) | 0.0462 (11) | -0.0031 (6) | -0.0026 (8) | 0.0050 (7) |
| C2 | 0.0241 (8) | 0.0201 (8) | 0.0438 (11) | 0.0008 (6) | 0.0020 (8) | 0.0045 (7) |
| C3 | 0.0166 (7) | 0.0280 (8) | 0.0257 (8) | -0.0021 (6) | -0.0004 (6) | 0.0010 (7) |
| C4 | 0.0189 (7) | 0.0217 (7) | 0.0239 (8) | -0.0016 (6) | 0.0000 (6) | -0.0011 (6) |
| C5 | 0.0177 (7) | 0.0172 (7) | 0.0176 (7) | -0.0041 (5) | 0.0004 (6) | 0.0026 (6) |
| C6 | 0.0186 (7) | 0.0210 (8) | 0.0349 (9) | -0.0013 (6) | -0.0035 (7) | -0.0042 (7) |
| C7 | 0.0230 (8) | 0.0215 (8) | 0.0328 (9) | -0.0044 (6) | 0.0002 (7) | -0.0052 (7) |
| C8 | 0.0173 (7) | 0.0163 (7) | 0.0168 (7) | -0.0037 (5) | 0.0011 (5) | 0.0019 (5) |
| C9 | 0.0162 (7) | 0.0188 (7) | 0.0198 (7) | -0.0004 (5) | 0.0022 (6) | 0.0009 (6) |
| C10 | 0.0203 (7) | 0.0171 (7) | 0.0191 (7) | -0.0006 (5) | 0.0030 (6) | -0.0018 (6) |
| C12 | 0.0222 (7) | 0.0166 (7) | 0.0241 (8) | 0.0009 (6) | -0.0023 (6) | -0.0016 (6) |
| C13 | 0.0192 (7) | 0.0213 (7) | 0.0246 (8) | 0.0022 (6) | -0.0034 (6) | -0.0026 (6) |

Geometric parameters (\AA , $^\circ$)

| | | | |
|-----------------------|-------------|--------|-------------|
| Tb1—O1 ⁱ | 2.3596 (11) | N3—C3 | 1.346 (2) |
| Tb1—O1 ⁱⁱ | 2.3596 (11) | N3—C7 | 1.350 (2) |
| Tb1—O1 | 2.3596 (11) | N4—C13 | 1.351 (2) |
| Tb1—O1 ⁱⁱⁱ | 2.3596 (11) | N4—C10 | 1.3533 (19) |
| Tb1—O3 ⁱ | 2.4097 (10) | C3—C4 | 1.378 (2) |
| Tb1—O3 ⁱⁱ | 2.4097 (10) | C3—H3 | 0.9300 |
| Tb1—O3 | 2.4097 (10) | C4—C5 | 1.400 (2) |
| Tb1—O3 ⁱⁱⁱ | 2.4097 (10) | C4—H4 | 0.9300 |
| Mo1—C1 ^{iv} | 2.1715 (18) | C5—C6 | 1.400 (2) |
| Mo1—C1 | 2.1715 (18) | C5—C8 | 1.480 (2) |
| Mo1—C1 ^v | 2.1715 (18) | C6—C7 | 1.379 (2) |

| | | | |
|--|-------------|---------------------------------------|-------------|
| Mo1—C1 ^{vi} | 2.1715 (18) | C6—H6 | 0.9300 |
| Mo1—C2 ^{iv} | 2.1731 (18) | C7—H7 | 0.9300 |
| Mo1—C2 | 2.1731 (18) | C8—C12 | 1.399 (2) |
| Mo1—C2 ^{vi} | 2.1731 (18) | C8—C9 | 1.403 (2) |
| Mo1—C2 ^v | 2.1731 (18) | C9—C10 | 1.380 (2) |
| O1—N3 | 1.3338 (17) | C9—H9 | 0.9300 |
| O2—N4 | 1.3323 (16) | C10—H10 | 0.9300 |
| O3—H3WA | 0.8326 | C12—C13 | 1.377 (2) |
| O3—H3WB | 0.8422 | C12—H12 | 0.9300 |
| N1—C1 | 1.155 (2) | C13—H13 | 0.9300 |
| N2—C2 | 1.152 (2) | | |
| O1 ⁱ —Tb1—O1 ⁱⁱ | 96.562 (17) | C1 ^{iv} —Mo1—C2 ^v | 143.33 (6) |
| O1 ⁱ —Tb1—O1 | 96.562 (17) | C1—Mo1—C2 ^v | 76.77 (7) |
| O1 ⁱⁱ —Tb1—O1 | 140.48 (5) | C1 ^v —Mo1—C2 ^v | 74.88 (7) |
| O1 ⁱ —Tb1—O1 ⁱⁱⁱ | 140.48 (5) | C1 ^{vi} —Mo1—C2 ^v | 140.36 (6) |
| O1 ⁱⁱ —Tb1—O1 ⁱⁱⁱ | 96.562 (17) | C2 ^{iv} —Mo1—C2 ^v | 116.87 (11) |
| O1—Tb1—O1 ⁱⁱⁱ | 96.562 (17) | C2—Mo1—C2 ^v | 74.10 (5) |
| O1 ⁱ —Tb1—O3 ⁱ | 75.68 (4) | C2 ^{vi} —Mo1—C2 ^v | 74.10 (5) |
| O1 ⁱⁱ —Tb1—O3 ⁱ | 146.10 (4) | N3—O1—Tb1 | 126.90 (9) |
| O1—Tb1—O3 ⁱ | 73.39 (4) | Tb1—O3—H3WA | 128.0 |
| O1 ⁱⁱⁱ —Tb1—O3 ⁱ | 72.73 (4) | Tb1—O3—H3WB | 120.9 |
| O1 ⁱ —Tb1—O3 ⁱⁱ | 73.39 (4) | H3WA—O3—H3WB | 100.0 |
| O1 ⁱⁱ —Tb1—O3 ⁱⁱ | 75.68 (4) | O1—N3—C3 | 120.24 (14) |
| O1—Tb1—O3 ⁱⁱ | 72.73 (4) | O1—N3—C7 | 119.45 (14) |
| O1 ⁱⁱⁱ —Tb1—O3 ⁱⁱ | 146.10 (4) | C3—N3—C7 | 120.30 (14) |
| O3 ⁱ —Tb1—O3 ⁱⁱⁱ | 130.38 (3) | O2—N4—C13 | 118.60 (13) |
| O1 ⁱ —Tb1—O3 | 146.10 (4) | O2—N4—C10 | 120.38 (13) |
| O1 ⁱⁱ —Tb1—O3 | 72.73 (4) | C13—N4—C10 | 121.00 (13) |
| O1—Tb1—O3 | 75.68 (4) | N1—C1—Mo1 | 175.79 (19) |
| O1 ⁱⁱⁱ —Tb1—O3 | 73.39 (4) | N2—C2—Mo1 | 176.07 (18) |
| O3 ⁱ —Tb1—O3 | 130.38 (3) | N3—C3—C4 | 121.02 (15) |
| O3 ⁱⁱ —Tb1—O3 | 72.79 (5) | N3—C3—H3 | 119.5 |
| O1 ⁱ —Tb1—O3 ⁱⁱⁱ | 72.73 (4) | C4—C3—H3 | 119.5 |
| O1 ⁱⁱ —Tb1—O3 ⁱⁱⁱ | 73.39 (4) | C3—C4—C5 | 120.65 (15) |
| O1—Tb1—O3 ⁱⁱⁱ | 146.10 (4) | C3—C4—H4 | 119.7 |
| O1 ⁱⁱⁱ —Tb1—O3 ⁱⁱⁱ | 75.68 (4) | C5—C4—H4 | 119.7 |
| O3 ⁱ —Tb1—O3 ⁱⁱⁱ | 72.79 (5) | C6—C5—C4 | 116.49 (14) |
| O3 ⁱⁱ —Tb1—O3 ⁱⁱⁱ | 130.38 (3) | C6—C5—C8 | 121.17 (14) |
| O3—Tb1—O3 ⁱⁱⁱ | 130.38 (3) | C4—C5—C8 | 122.23 (14) |
| C1 ^{iv} —Mo1—C1 | 74.50 (5) | C7—C6—C5 | 121.10 (15) |
| C1 ^{iv} —Mo1—C1 ^v | 117.74 (11) | C7—C6—H6 | 119.4 |
| C1—Mo1—C1 ^v | 74.50 (5) | C5—C6—H6 | 119.4 |
| C1 ^{iv} —Mo1—C1 ^{vi} | 74.50 (5) | N3—C7—C6 | 120.42 (16) |
| C1—Mo1—C1 ^{vi} | 117.74 (11) | N3—C7—H7 | 119.8 |
| C1 ^v —Mo1—C1 ^{vi} | 74.50 (5) | C6—C7—H7 | 119.8 |
| C1 ^{iv} —Mo1—C2 ^{iv} | 74.88 (7) | C12—C8—C9 | 116.87 (14) |
| C1—Mo1—C2 ^{iv} | 140.36 (6) | C12—C8—C5 | 120.77 (13) |

| | | | |
|--|-------------|-------------|-------------|
| C1 ^v —Mo1—C2 ^{iv} | 143.33 (6) | C9—C8—C5 | 122.32 (13) |
| C1 ^{vi} —Mo1—C2 ^{iv} | 76.77 (7) | C10—C9—C8 | 120.66 (14) |
| C1 ^{iv} —Mo1—C2 | 76.77 (7) | C10—C9—H9 | 119.7 |
| C1—Mo1—C2 | 74.88 (7) | C8—C9—H9 | 119.7 |
| C1 ^v —Mo1—C2 | 140.36 (6) | N4—C10—C9 | 120.16 (14) |
| C1 ^{vi} —Mo1—C2 | 143.33 (6) | N4—C10—H10 | 119.9 |
| C2 ^{iv} —Mo1—C2 | 74.10 (5) | C9—C10—H10 | 119.9 |
| C1 ^{iv} —Mo1—C2 ^{vi} | 140.36 (6) | C13—C12—C8 | 120.98 (14) |
| C1—Mo1—C2 ^{vi} | 143.33 (6) | C13—C12—H12 | 119.5 |
| C1 ^v —Mo1—C2 ^{vi} | 76.77 (7) | C8—C12—H12 | 119.5 |
| C1 ^{vi} —Mo1—C2 ^{vi} | 74.88 (7) | N4—C13—C12 | 120.17 (14) |
| C2 ^{iv} —Mo1—C2 ^{vi} | 74.10 (5) | N4—C13—H13 | 119.9 |
| C2—Mo1—C2 ^{vi} | 116.87 (11) | C12—C13—H13 | 119.9 |

Symmetry codes: (i) $-y+1, x-1/2, -z$; (ii) $-x+3/2, -y+1/2, z$; (iii) $y+1/2, -x+1, -z$; (iv) $-y+3/2, x, z$; (v) $y, -x+3/2, z$; (vi) $-x+3/2, -y+3/2, z$.

Hydrogen-bond geometry (Å, °)

| <i>D</i> —H... <i>A</i> | <i>D</i> —H | H... <i>A</i> | <i>D</i> ... <i>A</i> | <i>D</i> —H... <i>A</i> |
|---------------------------------------|-------------|---------------|-----------------------|-------------------------|
| O3—H3 <i>WA</i> ...O2 ^{vii} | 0.83 | 1.85 | 2.6702 (15) | 169 |
| O3—H3 <i>WB</i> ...O2 ^{viii} | 0.84 | 1.92 | 2.7417 (16) | 164 |
| O3—H3 <i>WB</i> ...N4 ^{viii} | 0.84 | 2.62 | 3.4251 (16) | 161 |

Symmetry codes: (vii) $-y+1/2, x, z+1$; (viii) $x+1/2, y+1/2, -z$.