

Acta Crystallographica Section E

## Structure Reports

Online

ISSN 1600-5368

## 3,5-Bis(4-fluorophenyl)-4,5-dihydro-1H-pyrazole-1-carbaldehyde

Zeliha Baktır,<sup>a</sup> Mehmet Akkurt,<sup>a\*</sup> S. Samshuddin,<sup>b</sup>  
B. Narayana<sup>b</sup> and H. S. Yathirajan<sup>c</sup><sup>a</sup>Department of Physics, Faculty of Sciences, Erciyes University, 38039 Kayseri, Turkey, <sup>b</sup>Department of Studies in Chemistry, Mangalore University, Mangalagangothri 574 199, India, and <sup>c</sup>Department of Studies in Chemistry, University of Mysore, Manasagangothri, Mysore 570 006, India  
Correspondence e-mail: akkurt@erciyes.edu.tr

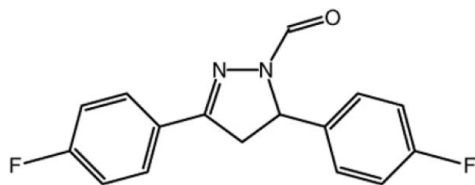
Received 17 April 2011; accepted 26 April 2011

Key indicators: single-crystal X-ray study;  $T = 294$  K; mean  $\sigma(\text{C}-\text{C}) = 0.005$  Å;  $R$  factor = 0.062;  $wR$  factor = 0.206; data-to-parameter ratio = 14.3.

In the title molecule,  $\text{C}_{16}\text{H}_{12}\text{F}_2\text{N}_2\text{O}$ , the pyrazole ring adopts a slight envelope conformation with the methylene C atom deviating by 0.114 (3) Å from the mean plane of the other four atoms [maximum deviation = 0.021 (3) Å]. The dihedral angles between the four essentially planar atoms of the pyrazole ring and the fluoro-substituted benzene rings are 2.6 (2) and 82.2 (2)°. The dihedral angle between the two benzene rings is 83.7 (2)°. The crystal packing is stabilized by weak intermolecular C—H...O hydrogen bonds.

## Related literature

For the biological activity of pyrazolines, see: Hes *et al.* (1978); Manna *et al.* (2005); Amir *et al.* (2008); Regaila *et al.* (1979); Sarojini *et al.* (2010). For their importance in organic synthesis, see: Bhaskarreddy *et al.* (1997); Klimova *et al.* (1999). For related structures, see: Butcher *et al.* (2007); Cui & Li (2010); Fun *et al.* (2010a,b); Jasinski *et al.* (2010a,b); Baktır *et al.* (2011).



## Experimental

## Crystal data

$\text{C}_{16}\text{H}_{12}\text{F}_2\text{N}_2\text{O}$   
 $M_r = 286.28$   
 Triclinic,  $P\bar{1}$   
 $a = 6.2141$  (9) Å  
 $b = 6.7802$  (8) Å  
 $c = 17.9857$  (9) Å

$\alpha = 96.727$  (4)°  
 $\beta = 90.254$  (4)°  
 $\gamma = 116.791$  (5)°  
 $V = 670.39$  (13) Å<sup>3</sup>  
 $Z = 2$   
 Mo  $K\alpha$  radiation

$\mu = 0.11$  mm<sup>-1</sup>  
 $T = 294$  K

0.30 × 0.20 × 0.10 mm

## Data collection

Rigaku R-Axis RAPID-S  
 diffractometer  
 Absorption correction: multi-scan  
 (Blessing, 1995)  
 $T_{\min} = 0.968$ ,  $T_{\max} = 0.989$

14070 measured reflections  
 2736 independent reflections  
 1011 reflections with  $I > 2\sigma(I)$   
 $R_{\text{int}} = 0.095$

## Refinement

$R[F^2 > 2\sigma(F^2)] = 0.062$   
 $wR(F^2) = 0.206$   
 $S = 0.94$   
 2736 reflections

191 parameters  
 H-atom parameters constrained  
 $\Delta\rho_{\max} = 0.19$  e Å<sup>-3</sup>  
 $\Delta\rho_{\min} = -0.33$  e Å<sup>-3</sup>

Table 1

Hydrogen-bond geometry (Å, °).

D—H...A	D—H	H...A	D...A	D—H...A
C4—H4...O1 <sup>i</sup>	0.93	2.50	3.421 (5)	171
C11—H11...O1 <sup>ii</sup>	0.93	2.39	3.296 (5)	165

Symmetry codes: (i)  $x - 2, y - 1, z$ ; (ii)  $x - 1, y, z$ .

Data collection: *CrystalClear* (Rigaku/MSC, 2005); cell refinement: *CrystalClear*; data reduction: *CrystalClear*; program(s) used to solve structure: *SIR97* (Altomare *et al.*, 1999); program(s) used to refine structure: *SHELXL97* (Sheldrick, 2008); molecular graphics: *PLATON* (Spek, 2009); software used to prepare material for publication: *WinGX* (Farrugia, 1999).

ZB and MA thank the Unit of the Scientific Research Projects of Erciyes University, Turkey, for the research grant FBD-10-2949, and for support of the data collection at Atatürk University, Turkey. SS and BN thank Mangalore University and the UGC SAP for financial assistance for the purchase of chemicals. HSY thanks the UOM for sabbatical leave.

Supplementary data and figures for this paper are available from the IUCr electronic archives (Reference: LH5239).

## References

- Altomare, A., Burla, M. C., Camalli, M., Casciarano, G. L., Giacovazzo, C., Guagliardi, A., Moliterni, A. G. G., Polidori, G. & Spagna, R. (1999). *J. Appl. Cryst.* **32**, 115–119.
- Amir, M., Kumar, H. & Khan, S. A. (2008). *Bioorg. Med. Chem. Lett.* **18**, 918–922.
- Baktır, Z., Akkurt, M., Samshuddin, S., Narayana, B. & Yathirajan, H. S. (2011). *Acta Cryst.* **E67**, o328–o329.
- Bhaskarreddy, D., Chandrasekhar, B. N., Padmavathi, V. & Sumathi, R. P. (1997). *Synthesis*, pp. 491–494.
- Blessing, R. H. (1995). *Acta Cryst.* **A51**, 33–38.
- Butcher, R. J., Jasinski, J. P., Prasad, D. J., Narayana, B. & Yathirajan, H. S. (2007). *Acta Cryst.* **E63**, o4005–o4006.
- Cui, P. & Li, X.-L. (2010). *Acta Cryst.* **E66**, o2351.
- Farrugia, L. J. (1999). *J. Appl. Cryst.* **32**, 837–838.
- Fun, H.-K., Hemamalini, M., Samshuddin, S., Narayana, B. & Yathirajan, H. S. (2010a). *Acta Cryst.* **E66**, o582–o583.
- Fun, H.-K., Hemamalini, M., Samshuddin, S., Narayana, B. & Yathirajan, H. S. (2010b). *Acta Cryst.* **E66**, o864–o865.
- Hes, R. V., Wellinga, K. & Grosscurt, A. C. (1978). *J. Agric. Food Chem.* **26**, 915–918.

- Jasinski, J. P., Guild, C. J., Samshuddin, S., Narayana, B. & Yathirajan, H. S. (2010a). *Acta Cryst.* **E66**, o1948–o1949.
- Jasinski, J. P., Guild, C. J., Samshuddin, S., Narayana, B. & Yathirajan, H. S. (2010b). *Acta Cryst.* **E66**, o2018.
- Klimova, E. I., Marcos, M., Klimova, T. B., Cecilio, A. T., Ruben, A. T. & Lena, R. R. (1999). *J. Organomet. Chem.* **585**, 106–111.
- Manna, F., Chimenti, F., Fioravanti, R., Bolasco, A., Secci, D., Chimenti, P., Ferlini, C. & Scambia, G. (2005). *Bioorg. Med. Chem. Lett.* **15**, 4632–4635.
- Regaila, H. A., El-Bayonk, A. K. & Hammad, M. (1979). *Egypt. J. Chem.* **20**, 197–202.
- Rigaku/MS (2005). *CrystalClear*. Rigaku/MS, The Woodlands, Texas, USA.
- Sarojini, B. K., Vidyagayatri, M., Darshanraj, C. G., Bharath, B. R. & Manjunatha, H. (2010). *Lett. Drug Des. Discov.* **7**, 214–224.
- Sheldrick, G. M. (2008). *Acta Cryst.* **A64**, 112–122.
- Spek, A. L. (2009). *Acta Cryst.* **D65**, 148–155.

## supporting information

*Acta Cryst.* (2011). E67, o1292–o1293 [doi:10.1107/S160053681101587X]

## 3,5-Bis(4-fluorophenyl)-4,5-dihydro-1H-pyrazole-1-carbaldehyde

Zeliha Baktır, Mehmet Akkurt, S. Samshuddin, B. Narayana and H. S. Yathirajan

### S1. Comment

Pyrazolines have been reported to exhibit a broad spectrum of biological activities such as antitumor, antibacterial, antifungal, antiviral, antiparasitic, anti-tubercular and insecticidal activities (Hes *et al.*, 1978; Manna *et al.*, 2005; Amir *et al.*, 2008). Some of these compounds have also antioxidant, anti-diabetic, anaesthetic and analgesic properties (Sarojini *et al.*, 2010; Regaila *et al.*, 1979). In addition, pyrazolines have played a crucial part in the development of theory in heterocyclic chemistry and also used extensively in organic synthesis (Klimova *et al.*, 1999 and Bhaskarreddy *et al.*, 1997).

The crystal structure of some pyrazoline derivatives *viz.*, 3-(4-methylphenyl)-5-[4-(methylthio)phenyl]-4,5-dihydro-1H-pyrazole-1-carbaldehyde (Butcher *et al.*, 2007) and 5-(2-hydroxyphenyl)-3-methyl-4,5-dihydro-1H-pyrazole-1-carbaldehyde (Cui & Li, 2010) have been reported. In view of the importance of pyrazoline derivatives and in continuation of our work on synthesis of various derivatives of 4,4'-difluoro chalcone (Fun *et al.*, 2010a,b; Jasinski *et al.*, 2010a,b; Baktır *et al.*, 2011), the title compound (I) is synthesized and its crystal structure is reported herein.

The molecular structure of the title compound is shown in Fig. 1. The pyrazole ring adopts a slight envelope conformation with the methylene C atom (C8) deviating by 0.114 (3) Å from the mean-plane of the other four atoms (C7/C9/N1/N2 with maximum deviation 0.021 (3) Å for N1). The dihedral angles between the four essentially planar atoms of the pyrazole ring and fluoro-substituted benzene rings are 2.6 (2) and 82.2 (2)°, respectively. The dihedral angle between the two benzene rings is 83.7 (2)°. The crystal packing is stabilized by weak intermolecular C—H···O hydrogen bonds (Fig. 2).

### S2. Experimental

A mixture of (2*E*)-1,3-bis(4-fluorophenyl)prop-2-en-1-one (2.44 g, 0.01 mol) and hydrazine hydrate (0.5 ml, 0.01 mol) in 20 ml formic acid was refluxed for 8 h. The reaction mixture was cooled and poured into 50 ml ice-cold water. The precipitate was collected by filtration and purified by recrystallization from ethanol. The single-crystal was grown from DMF by slow evaporation method and yield of the compound was 86%. (m. p.: 408 K).

### S3. Refinement

All H atoms were positioned geometrically [C—H = 0.93 and 0.97 Å] and allowed to ride on their parent C atoms, with  $U_{\text{iso}}(\text{H}) = 1.2U_{\text{eq}}(\text{C})$ . Owing to the large number of weak high-angle reflections, the ratio of observed to unique reflections is low (37%).

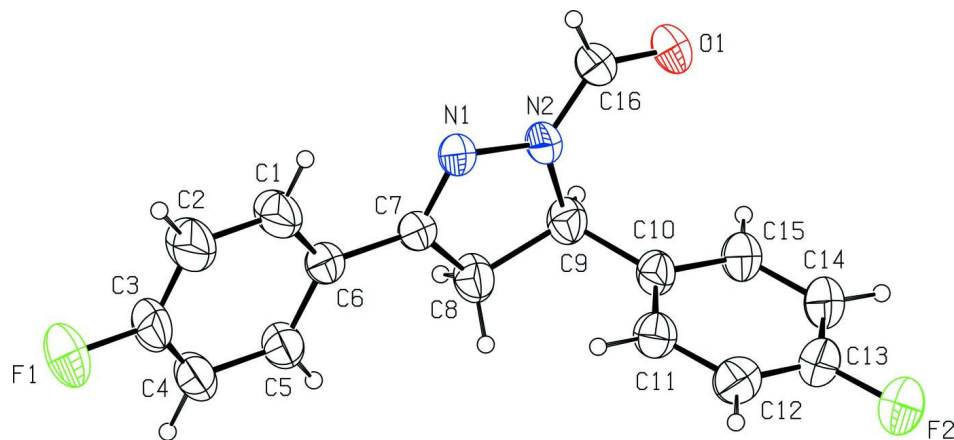


Figure 1

The title molecule with displacement ellipsoids for non-H atoms are drawn at the 30% probability level.

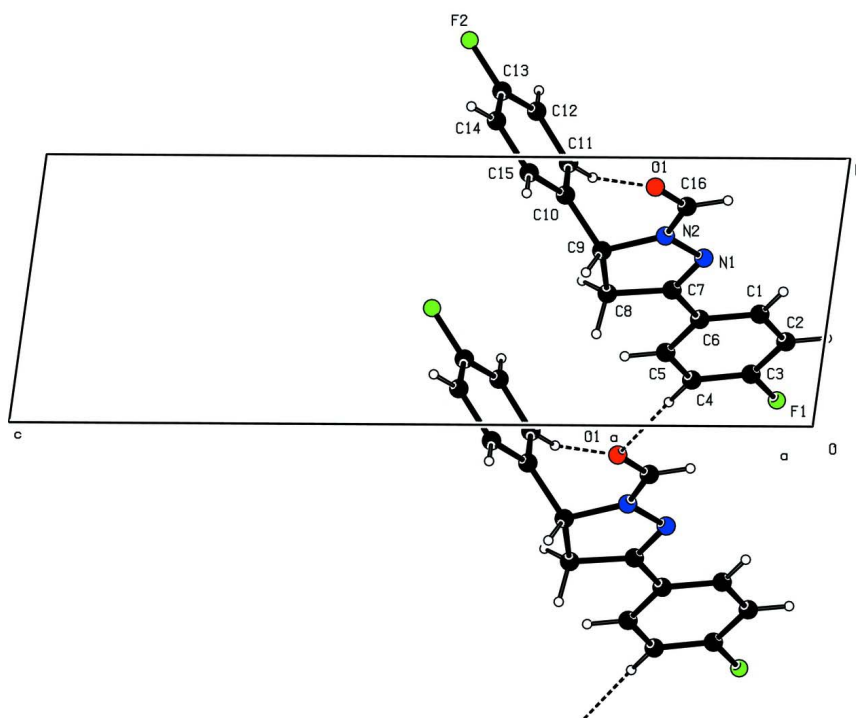


Figure 2

Hydrogen bonding of the title compound viewed along the *a* axis. Hydrogen bonds are shown as dotted lines (symmetry code: (a)  $x-2, y-1, z$ ).

### 3,5-Bis(4-fluorophenyl)-4,5-dihydro-1*H*-pyrazole-1-carbaldehyde

#### Crystal data

$C_{16}H_{12}F_2N_2O$

$M_r = 286.28$

Triclinic,  $P\bar{1}$

Hall symbol:  $-P\ 1$

$a = 6.2141(9)$  Å

$b = 6.7802(8)$  Å

$c = 17.9857(9)$  Å

$\alpha = 96.727(4)^\circ$

$\beta = 90.254(4)^\circ$

$\gamma = 116.791(5)^\circ$

$V = 670.39 (13) \text{ \AA}^3$   
 $Z = 2$   
 $F(000) = 296$   
 $D_x = 1.418 \text{ Mg m}^{-3}$   
 Mo  $K\alpha$  radiation,  $\lambda = 0.71073 \text{ \AA}$   
 Cell parameters from 1748 reflections

$\theta = 2.3\text{--}26.3^\circ$   
 $\mu = 0.11 \text{ mm}^{-1}$   
 $T = 294 \text{ K}$   
 Prism, pale yellow  
 $0.30 \times 0.20 \times 0.10 \text{ mm}$

*Data collection*

Rigaku R-AXIS RAPID-S  
 diffractometer  
 Radiation source: Sealed Tube  
 Graphite Monochromator monochromator  
 Detector resolution:  $10.0000 \text{ pixels mm}^{-1}$   
 dtprofit.ref scans  
 Absorption correction: multi-scan  
 (Blessing, 1995)  
 $T_{\min} = 0.968$ ,  $T_{\max} = 0.989$

14070 measured reflections  
 2736 independent reflections  
 1011 reflections with  $I > 2\sigma(I)$   
 $R_{\text{int}} = 0.095$   
 $\theta_{\max} = 26.5^\circ$ ,  $\theta_{\min} = 3.4^\circ$   
 $h = -7 \rightarrow 7$   
 $k = -8 \rightarrow 8$   
 $l = -22 \rightarrow 22$

*Refinement*

Refinement on  $F^2$   
 Least-squares matrix: full  
 $R[F^2 > 2\sigma(F^2)] = 0.062$   
 $wR(F^2) = 0.206$   
 $S = 0.94$   
 2736 reflections  
 191 parameters  
 0 restraints  
 Primary atom site location: structure-invariant  
 direct methods

Secondary atom site location: difference Fourier  
 map  
 Hydrogen site location: inferred from  
 neighbouring sites  
 H-atom parameters constrained  
 $w = 1/[\sigma^2(F_o^2) + (0.0812P)^2]$   
 where  $P = (F_o^2 + 2F_c^2)/3$   
 $(\Delta/\sigma)_{\max} < 0.001$   
 $\Delta\rho_{\max} = 0.19 \text{ e \AA}^{-3}$   
 $\Delta\rho_{\min} = -0.33 \text{ e \AA}^{-3}$

*Special details*

**Geometry.** Bond distances, angles *etc.* have been calculated using the rounded fractional coordinates. All su's are estimated from the variances of the (full) variance-covariance matrix. The cell e.s.d.'s are taken into account in the estimation of distances, angles and torsion angles

**Refinement.** Refinement on  $F^2$  for ALL reflections except those flagged by the user for potential systematic errors. Weighted  $R$ -factors  $wR$  and all goodnesses of fit  $S$  are based on  $F^2$ , conventional  $R$ -factors  $R$  are based on  $F$ , with  $F$  set to zero for negative  $F^2$ . The observed criterion of  $F^2 > \sigma(F^2)$  is used only for calculating  $-R$ -factor-obs *etc.* and is not relevant to the choice of reflections for refinement.  $R$ -factors based on  $F^2$  are statistically about twice as large as those based on  $F$ , and  $R$ -factors based on ALL data will be even larger.

*Fractional atomic coordinates and isotropic or equivalent isotropic displacement parameters ( $\text{\AA}^2$ )*

	$x$	$y$	$z$	$U_{\text{iso}}^*/U_{\text{eq}}$
F1	-0.7910 (4)	0.0976 (4)	0.04914 (14)	0.1334 (11)
F2	0.7113 (5)	1.4342 (4)	0.49400 (14)	0.1284 (11)
O1	0.9124 (4)	0.8903 (4)	0.23729 (12)	0.0822 (9)
N1	0.3094 (4)	0.6264 (4)	0.16479 (13)	0.0621 (9)
N2	0.5069 (4)	0.7082 (4)	0.21640 (12)	0.0621 (9)
C1	-0.1494 (6)	0.4185 (7)	0.08534 (18)	0.1019 (16)
C2	-0.3750 (7)	0.3162 (8)	0.0481 (2)	0.120 (2)
C3	-0.5702 (6)	0.1944 (7)	0.0858 (2)	0.0937 (16)
C4	-0.5512 (6)	0.1715 (5)	0.1584 (2)	0.0798 (14)
C5	-0.3241 (6)	0.2737 (5)	0.19570 (18)	0.0718 (12)

C6	-0.1199 (5)	0.3980 (5)	0.15912 (16)	0.0643 (11)
C7	0.1190 (5)	0.5070 (5)	0.19872 (15)	0.0583 (11)
C8	0.1722 (5)	0.4922 (5)	0.27855 (16)	0.0728 (12)
C9	0.4427 (5)	0.6519 (5)	0.29283 (15)	0.0650 (11)
C10	0.5095 (5)	0.8590 (5)	0.34783 (15)	0.0637 (11)
C11	0.3760 (6)	0.9769 (6)	0.34948 (17)	0.0713 (11)
C12	0.4417 (7)	1.1706 (6)	0.39825 (19)	0.0820 (16)
C13	0.6424 (7)	1.2450 (6)	0.4449 (2)	0.0873 (16)
C14	0.7786 (7)	1.1343 (6)	0.44657 (19)	0.0870 (14)
C15	0.7124 (6)	0.9408 (6)	0.39679 (17)	0.0774 (14)
C16	0.7313 (6)	0.8185 (5)	0.19475 (18)	0.0696 (12)
H1	-0.01520	0.50270	0.06000	0.1230*
H2	-0.39330	0.33040	-0.00210	0.1440*
H4	-0.68760	0.08870	0.18310	0.0960*
H5	-0.30840	0.25880	0.24590	0.0860*
H8A	0.13880	0.34140	0.28510	0.0870*
H8B	0.07740	0.53940	0.31210	0.0870*
H9	0.52740	0.57050	0.30870	0.0780*
H11	0.23920	0.92430	0.31700	0.0850*
H12	0.35050	1.24820	0.39910	0.0990*
H14	0.91270	1.18720	0.48020	0.1040*
H15	0.80540	0.86500	0.39630	0.0930*
H16	0.75090	0.84190	0.14480	0.0830*

*Atomic displacement parameters (Å<sup>2</sup>)*

	$U^{11}$	$U^{22}$	$U^{33}$	$U^{12}$	$U^{13}$	$U^{23}$
F1	0.0603 (14)	0.164 (2)	0.142 (2)	0.0304 (15)	-0.0376 (13)	-0.0172 (17)
F2	0.1089 (18)	0.1004 (17)	0.133 (2)	0.0232 (15)	0.0018 (15)	-0.0407 (15)
O1	0.0474 (13)	0.0936 (18)	0.0902 (17)	0.0222 (13)	-0.0112 (12)	-0.0025 (13)
N1	0.0507 (15)	0.0728 (18)	0.0553 (14)	0.0242 (14)	-0.0057 (12)	-0.0030 (12)
N2	0.0451 (15)	0.0734 (18)	0.0576 (14)	0.0203 (14)	-0.0060 (11)	-0.0010 (12)
C1	0.059 (2)	0.159 (4)	0.061 (2)	0.027 (2)	-0.0034 (17)	0.011 (2)
C2	0.070 (3)	0.187 (5)	0.074 (2)	0.037 (3)	-0.015 (2)	0.001 (3)
C3	0.052 (2)	0.105 (3)	0.107 (3)	0.028 (2)	-0.022 (2)	-0.016 (2)
C4	0.051 (2)	0.072 (2)	0.104 (3)	0.0191 (18)	-0.0005 (18)	0.004 (2)
C5	0.059 (2)	0.069 (2)	0.080 (2)	0.0242 (18)	-0.0004 (17)	0.0038 (17)
C6	0.053 (2)	0.075 (2)	0.0613 (18)	0.0286 (18)	-0.0030 (14)	-0.0025 (15)
C7	0.0502 (19)	0.066 (2)	0.0554 (17)	0.0254 (16)	0.0004 (14)	0.0000 (14)
C8	0.063 (2)	0.074 (2)	0.068 (2)	0.0199 (18)	-0.0071 (15)	0.0074 (16)
C9	0.061 (2)	0.070 (2)	0.0583 (17)	0.0253 (17)	-0.0090 (14)	0.0073 (15)
C10	0.0568 (19)	0.072 (2)	0.0541 (17)	0.0232 (17)	-0.0080 (14)	0.0042 (15)
C11	0.065 (2)	0.084 (2)	0.0618 (18)	0.032 (2)	-0.0040 (15)	0.0066 (17)
C12	0.085 (3)	0.086 (3)	0.075 (2)	0.040 (2)	0.0065 (19)	0.0061 (19)
C13	0.082 (3)	0.077 (3)	0.080 (2)	0.022 (2)	0.002 (2)	-0.0147 (19)
C14	0.069 (2)	0.095 (3)	0.078 (2)	0.026 (2)	-0.0154 (18)	-0.011 (2)
C15	0.064 (2)	0.091 (3)	0.066 (2)	0.029 (2)	-0.0137 (16)	-0.0044 (18)
C16	0.050 (2)	0.081 (2)	0.072 (2)	0.0268 (18)	-0.0002 (16)	0.0009 (17)

*Geometric parameters (Å, °)*

F1—C3	1.352 (5)	C10—C15	1.385 (5)
F2—C13	1.358 (4)	C11—C12	1.380 (5)
O1—C16	1.225 (4)	C12—C13	1.356 (6)
N1—N2	1.390 (4)	C13—C14	1.363 (6)
N1—C7	1.299 (4)	C14—C15	1.388 (5)
N2—C9	1.478 (4)	C1—H1	0.9300
N2—C16	1.337 (5)	C2—H2	0.9300
C1—C2	1.379 (6)	C4—H4	0.9300
C1—C6	1.370 (4)	C5—H5	0.9300
C2—C3	1.360 (6)	C8—H8A	0.9700
C3—C4	1.344 (5)	C8—H8B	0.9700
C4—C5	1.387 (5)	C9—H9	0.9800
C5—C6	1.388 (5)	C11—H11	0.9300
C6—C7	1.461 (5)	C12—H12	0.9300
C7—C8	1.497 (4)	C14—H14	0.9300
C8—C9	1.534 (5)	C15—H15	0.9300
C9—C10	1.506 (4)	C16—H16	0.9300
C10—C11	1.386 (5)		
N2—N1—C7	107.5 (2)	C13—C14—C15	118.4 (4)
N1—N2—C9	113.9 (2)	C10—C15—C14	120.9 (4)
N1—N2—C16	120.5 (2)	O1—C16—N2	123.4 (3)
C9—N2—C16	125.6 (3)	C2—C1—H1	119.00
C2—C1—C6	121.0 (4)	C6—C1—H1	119.00
C1—C2—C3	119.0 (3)	C1—C2—H2	120.00
F1—C3—C2	118.6 (3)	C3—C2—H2	121.00
F1—C3—C4	119.2 (4)	C3—C4—H4	121.00
C2—C3—C4	122.2 (4)	C5—C4—H4	121.00
C3—C4—C5	118.7 (3)	C4—C5—H5	120.00
C4—C5—C6	120.9 (3)	C6—C5—H5	120.00
C1—C6—C5	118.1 (3)	C7—C8—H8A	111.00
C1—C6—C7	121.1 (3)	C7—C8—H8B	111.00
C5—C6—C7	120.8 (3)	C9—C8—H8A	111.00
N1—C7—C6	120.7 (3)	C9—C8—H8B	111.00
N1—C7—C8	113.8 (3)	H8A—C8—H8B	109.00
C6—C7—C8	125.5 (3)	N2—C9—H9	109.00
C7—C8—C9	103.6 (2)	C8—C9—H9	109.00
N2—C9—C8	100.7 (2)	C10—C9—H9	109.00
N2—C9—C10	111.1 (2)	C10—C11—H11	119.00
C8—C9—C10	116.5 (3)	C12—C11—H11	119.00
C9—C10—C11	121.5 (3)	C11—C12—H12	121.00
C9—C10—C15	120.4 (3)	C13—C12—H12	121.00
C11—C10—C15	118.1 (3)	C13—C14—H14	121.00
C10—C11—C12	121.4 (4)	C15—C14—H14	121.00
C11—C12—C13	118.4 (4)	C10—C15—H15	120.00
F2—C13—C12	119.9 (4)	C14—C15—H15	120.00

F2—C13—C14	117.3 (4)	O1—C16—H16	118.00
C12—C13—C14	122.8 (4)	N2—C16—H16	118.00
C7—N1—N2—C9	-4.2 (3)	C5—C6—C7—N1	-178.8 (3)
C7—N1—N2—C16	173.1 (3)	C5—C6—C7—C8	2.3 (5)
N2—N1—C7—C8	-1.3 (4)	C1—C6—C7—N1	0.1 (5)
N2—N1—C7—C6	179.7 (3)	C6—C7—C8—C9	-175.2 (3)
C16—N2—C9—C10	66.3 (4)	N1—C7—C8—C9	5.9 (4)
C16—N2—C9—C8	-169.7 (3)	C7—C8—C9—N2	-7.3 (3)
C9—N2—C16—O1	-1.5 (5)	C7—C8—C9—C10	112.8 (3)
N1—N2—C9—C8	7.4 (3)	C8—C9—C10—C11	-40.0 (4)
N1—N2—C9—C10	-116.5 (3)	C8—C9—C10—C15	142.1 (3)
N1—N2—C16—O1	-178.4 (3)	N2—C9—C10—C15	-103.5 (3)
C2—C1—C6—C7	-179.8 (4)	N2—C9—C10—C11	74.4 (4)
C6—C1—C2—C3	0.3 (7)	C9—C10—C15—C14	178.6 (3)
C2—C1—C6—C5	-0.9 (6)	C9—C10—C11—C12	-177.9 (3)
C1—C2—C3—C4	0.5 (7)	C15—C10—C11—C12	0.0 (5)
C1—C2—C3—F1	179.0 (4)	C11—C10—C15—C14	0.6 (5)
F1—C3—C4—C5	-179.3 (3)	C10—C11—C12—C13	0.3 (5)
C2—C3—C4—C5	-0.8 (6)	C11—C12—C13—C14	-1.3 (6)
C3—C4—C5—C6	0.2 (5)	C11—C12—C13—F2	-179.5 (3)
C4—C5—C6—C1	0.6 (5)	F2—C13—C14—C15	-179.8 (3)
C4—C5—C6—C7	179.5 (3)	C12—C13—C14—C15	1.9 (6)
C1—C6—C7—C8	-178.8 (3)	C13—C14—C15—C10	-1.6 (5)

Hydrogen-bond geometry (Å, °)

<i>D</i> —H... <i>A</i>	<i>D</i> —H	H... <i>A</i>	<i>D</i> ... <i>A</i>	<i>D</i> —H... <i>A</i>
C4—H4...O1 <sup>i</sup>	0.93	2.50	3.421 (5)	171
C11—H11...O1 <sup>ii</sup>	0.93	2.39	3.296 (5)	165

Symmetry codes: (i)  $x-2, y-1, z$ ; (ii)  $x-1, y, z$ .