

Acta Crystallographica Section E

## Structure Reports

Online

ISSN 1600-5368

# 4-(3-Fluoro-4-nitrophenyl)morpholin-3-one

 Chang-Jiang Huang,<sup>a\*</sup> Jianguo Wu,<sup>b</sup> Zhi-Qiang Cai<sup>a</sup> and Jing Yuan<sup>a</sup>

<sup>a</sup>Tianjin Key Laboratory of Molecular Design and Drug Discovery, Tianjin Institute of Pharmaceutical Research, Tianjin 300193, People's Republic of China, and <sup>b</sup>Tianjin Institute of Pharmaceutical Research, Tianjin 300193, People's Republic of China  
Correspondence e-mail: czq0601@gmail.com

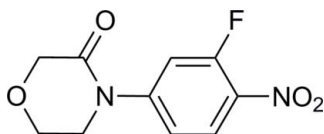
Received 16 May 2011; accepted 24 May 2011

 Key indicators: single-crystal X-ray study;  $T = 113$  K; mean  $\sigma(\text{C}-\text{C}) = 0.002$  Å;  $R$  factor = 0.039;  $wR$  factor = 0.104; data-to-parameter ratio = 16.7.

In the title compound,  $\text{C}_{10}\text{H}_9\text{FN}_2\text{O}_4$ , the dihedral angle between the benzene ring and the nitro group plane is  $11.29(3)^\circ$ . The morpholinone ring adopts a twist-chair conformation. In the crystal, molecules are linked by intermolecular  $\text{C}-\text{H}\cdots\text{O}$  hydrogen bonds into a chain along the  $a$ -axis direction.

## Related literature

The title compound is an intermediate in the preparation of derivatives of the factor Xa inhibitor rivaroxaban (systematic name *(S)*-5-chloro-*N*-[[2-oxo-3-[4-(3-oxomorpholin-4-yl)phenyl]oxazolidin-5-yl]methyl]thiophene-2-carboxamide). For the bioactivity and applications of rivaroxaban, see: Pinto *et al.* (2010); Haas (2008); Squizzato *et al.* (2009); Samama & Gerotziafas (2010); Van Huis *et al.* (2009). For the synthesis of other derivatives with morpholone, see: Van Huis *et al.* (2009); Zbinden *et al.* (2009).



## Experimental

### Crystal data

 $\text{C}_{10}\text{H}_9\text{FN}_2\text{O}_4$   
 $M_r = 240.19$ 

 Triclinic,  $P\bar{1}$   
 $a = 6.6408(7)$  Å

 $b = 7.3788(10)$  Å  
 $c = 10.8546(14)$  Å  
 $\alpha = 73.30(3)^\circ$   
 $\beta = 75.39(3)^\circ$   
 $\gamma = 74.30(3)^\circ$   
 $V = 481.60(14)$  Å<sup>3</sup>
 $Z = 2$   
Mo  $K\alpha$  radiation  
 $\mu = 0.14$  mm<sup>-1</sup>  
 $T = 113$  K  
 $0.22 \times 0.20 \times 0.10$  mm

### Data collection

 Rigaku Saturn CCD area-detector diffractometer  
Absorption correction:  $\psi$  scan (*CrystalClear*; Rigaku/MS, 2009)  
 $T_{\min} = 0.970$ ,  $T_{\max} = 0.986$ 

 6470 measured reflections  
2569 independent reflections  
1734 reflections with  $I > 2\sigma(I)$   
 $R_{\text{int}} = 0.041$ 

### Refinement

 $R[F^2 > 2\sigma(F^2)] = 0.039$   
 $wR(F^2) = 0.104$   
 $S = 0.97$   
2569 reflections

 154 parameters  
H-atom parameters constrained  
 $\Delta\rho_{\text{max}} = 0.56$  e Å<sup>-3</sup>  
 $\Delta\rho_{\text{min}} = -0.25$  e Å<sup>-3</sup>

Table 1

Hydrogen-bond geometry (Å, °).

$D-\text{H}\cdots A$	$D-\text{H}$	$\text{H}\cdots A$	$D\cdots A$	$D-\text{H}\cdots A$
$\text{C6}-\text{H6}\cdots\text{O2}^i$	0.95	2.39	3.2635 (16)	153
$\text{C2}-\text{H2B}\cdots\text{O3}^{ii}$	0.99	2.50	3.3244 (19)	140
$\text{C1}-\text{H1B}\cdots\text{O4}^{iii}$	0.99	2.57	3.515 (2)	161

 Symmetry codes: (i)  $x + 1, y, z$ ; (ii)  $x, y, z + 1$ ; (iii)  $-x + 2, -y + 1, -z$ .

Data collection: *RAPID-AUTO* (Rigaku, 1998); cell refinement: *RAPID-AUTO*; data reduction: *RAPID-AUTO*; program(s) used to solve structure: *SHELXS97* (Sheldrick, 2008); program(s) used to refine structure: *SHELXL97* (Sheldrick, 2008); molecular graphics: *SHELXTL* (Sheldrick, 2008); software used to prepare material for publication: *CrystalStructure* (Rigaku/MS, 2009).

The authors thank the State Key Laboratory of Elemento-organic Chemistry, Nankai University, for the data collection.

Supplementary data and figures for this paper are available from the IUCr electronic archives (Reference: KP2328).

## References

- Haas, S. (2008). *J. Thromb. Thrombolysis*, **25**, 52–60.  
Pinto, D. J. P., Smallheer, J. M., Cheney, D. L., Knabb, R. M. & Wexler, R. R. (2010). *J. Med. Chem.* **53**, 6243–6274.  
Rigaku (1998). *RAPID-AUTO*. Rigaku Corporation, Tokyo, Japan.  
Rigaku/MS (2009). *CrystalClear* and *CrystalStructure*. Rigaku/MS, The Woodlands, Texas, USA.  
Samama, M. M. & Gerotziafas, G. T. (2010). *J. Thromb. Thrombolysis*, **29**, 92–104.  
Sheldrick, G. M. (2008). *Acta Cryst.* **A64**, 112–122.  
Squizzato, A., Dentali, F., Steidl, L. & Ageno, W. (2009). *Int. Emerg. Med.* **4**, 479–484.  
Van Huis, C. A., *et al.* (2009). *Bioorg. Med. Chem.* **17**, 2501–2511.  
Zbinden, K. G., *et al.* (2009). *Eur. J. Med. Chem.* **44**, 2787–2795.

## supporting information

*Acta Cryst.* (2011). E67, o1549 [doi:10.1107/S1600536811019738]

**4-(3-Fluoro-4-nitrophenyl)morpholin-3-one****Chang-Jiang Huang, Jiang Wu, Zhi-Qiang Cai and Jing Yuan****S1. Comment**

Rivaroxaban is an oral, direct factor Xa inhibitor for the prevention and treatment of arterial and venous thrombosis (Pinto *et al.*, 2010; Haas, 2008; Squizzato *et al.*, 2009).

The title compound (Fig. 1) is important intermediate in the preparation of derivatives of Rivaroxaban. Some derivatives of Rivaroxaban have been reported for having high affinity for human FXa (Squizzato *et al.*, 2009; Samama *et al.*, 2010; Van Huis *et al.*, 2009). Herein, the synthesis and the crystal structure of the title compound are reported.

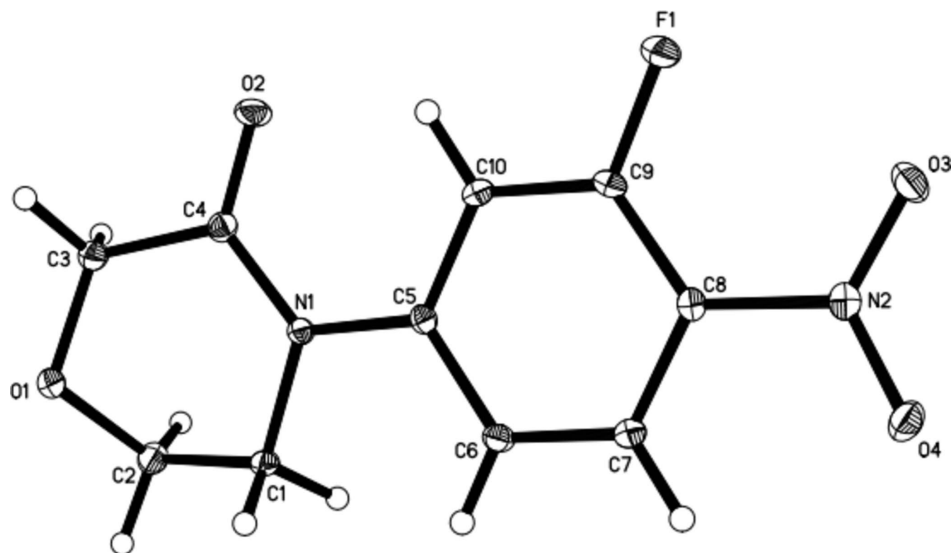
In the title compound, C<sub>10</sub>H<sub>9</sub>F<sub>1</sub>N<sub>2</sub>O<sub>4</sub>, the dihedral angle between benzene ring and the plane of nitro group is 11.29 (3)°. The morpholone ring adopts a twist-chair conformation. In the crystal packing molecules are linked by intermolecular C—H···O hydrogen bonds into a chain (Table 1).

**S2. Experimental**

Potassium carbonate (6.73 g, 0.0488 mol) was added to a suspension of 2-(2-chloroethoxy)-*N*-(3-fluoro-4-nitrophenyl)-acetamide (9.00 g, 0.0325 mol) in acetonitrile (200 mL). The reaction mixture was stirred at 385 K for 5 h. The mixture was evaporated in vacuo. Water was added. The reaction mixture was filtered, washed with water, and dried to obtain yellow solid (7.19 g). Colourless single crystals suitable for X-ray diffraction were obtained by recrystallisation from ethanol and ethyl acetate.

**S3. Refinement**

All H atoms were geometrically positioned (C—H 0.95–0.99 Å) and treated as riding, with  $U_{\text{iso}}(\text{H}) = 1.2U_{\text{eq}}(\text{C})$ .

**Figure 1**

The structure of  $C_{10}H_9FN_2O_4$  with all non-H atom-labelling scheme and displacement ellipsoids drawn at the 50% probability level.

#### 4-(3-Fluoro-4-nitrophenyl)morpholin-3-one

##### Crystal data

$C_{10}H_9FN_2O_4$   
 $M_r = 240.19$   
 Triclinic,  $P\bar{1}$   
 Hall symbol:  $-P\ 1$   
 $a = 6.6408$  (7) Å  
 $b = 7.3788$  (10) Å  
 $c = 10.8546$  (14) Å  
 $\alpha = 73.30$  (3)°  
 $\beta = 75.39$  (3)°  
 $\gamma = 74.30$  (3)°  
 $V = 481.60$  (14) Å<sup>3</sup>

$Z = 2$   
 $F(000) = 248$   
 $D_x = 1.656$  Mg m<sup>-3</sup>  
 Mo  $K\alpha$  radiation,  $\lambda = 0.71073$  Å  
 Cell parameters from 1909 reflections  
 $\theta = 2.0$ – $31.1$ °  
 $\mu = 0.14$  mm<sup>-1</sup>  
 $T = 113$  K  
 Prism, colourless  
 $0.22 \times 0.20 \times 0.10$  mm

##### Data collection

Rigaku Saturn CCD area-detector  
 diffractometer  
 Radiation source: rotating anode  
 Multilayer monochromator  
 Detector resolution: 14.63 pixels mm<sup>-1</sup>  
 $\omega$  and  $\varphi$  scans  
 Absorption correction:  $\psi$  scan  
 (*CrystalClear*; Rigaku/MSO, 2009)  
 $T_{\min} = 0.970$ ,  $T_{\max} = 0.986$

6470 measured reflections  
 2569 independent reflections  
 1734 reflections with  $I > 2\sigma(I)$   
 $R_{\text{int}} = 0.041$   
 $\theta_{\max} = 29.1$ °,  $\theta_{\min} = 2.0$ °  
 $h = -9 \rightarrow 9$   
 $k = -10 \rightarrow 9$   
 $l = -14 \rightarrow 14$

##### Refinement

Refinement on  $F^2$   
 Least-squares matrix: full  
 $R[F^2 > 2\sigma(F^2)] = 0.039$   
 $wR(F^2) = 0.104$   
 $S = 0.97$

2569 reflections  
 154 parameters  
 0 restraints  
 Primary atom site location: structure-invariant  
 direct methods

Secondary atom site location: difference Fourier map  
 Hydrogen site location: inferred from neighbouring sites  
 H-atom parameters constrained

$$w = 1/[\sigma^2(F_o^2) + (0.0502P)^2]$$

where  $P = (F_o^2 + 2F_c^2)/3$   
 $(\Delta/\sigma)_{\max} < 0.001$   
 $\Delta\rho_{\max} = 0.56 \text{ e } \text{\AA}^{-3}$   
 $\Delta\rho_{\min} = -0.25 \text{ e } \text{\AA}^{-3}$

*Special details*

**Geometry.** All e.s.d.'s (except the e.s.d. in the dihedral angle between two l.s. planes) are estimated using the full covariance matrix. The cell e.s.d.'s are taken into account individually in the estimation of e.s.d.'s in distances, angles and torsion angles; correlations between e.s.d.'s in cell parameters are only used when they are defined by crystal symmetry. An approximate (isotropic) treatment of cell e.s.d.'s is used for estimating e.s.d.'s involving l.s. planes.

**Refinement.** Refinement of  $F^2$  against ALL reflections. The weighted  $R$ -factor  $wR$  and goodness of fit  $S$  are based on  $F^2$ , conventional  $R$ -factors  $R$  are based on  $F$ , with  $F$  set to zero for negative  $F^2$ . The threshold expression of  $F^2 > \sigma(F^2)$  is used only for calculating  $R$ -factors(gt) *etc.* and is not relevant to the choice of reflections for refinement.  $R$ -factors based on  $F^2$  are statistically about twice as large as those based on  $F$ , and  $R$ -factors based on ALL data will be even larger.

*Fractional atomic coordinates and isotropic or equivalent isotropic displacement parameters ( $\text{\AA}^2$ )*

	<i>x</i>	<i>y</i>	<i>z</i>	$U_{\text{iso}}^*/U_{\text{eq}}$
F1	0.38071 (13)	0.73231 (13)	-0.24062 (8)	0.0292 (2)
O1	0.23003 (15)	0.94560 (12)	0.40672 (8)	0.0192 (2)
O2	0.04787 (15)	0.82852 (15)	0.16307 (9)	0.0262 (2)
O3	0.74637 (16)	0.59970 (13)	-0.37865 (9)	0.0241 (2)
O4	1.03428 (15)	0.62270 (13)	-0.32888 (9)	0.0234 (2)
N1	0.39251 (16)	0.79057 (14)	0.18692 (10)	0.0139 (2)
N2	0.84043 (18)	0.63168 (15)	-0.30564 (10)	0.0165 (2)
C1	0.5325 (2)	0.77071 (18)	0.27977 (12)	0.0161 (3)
H1A	0.6152	0.8739	0.2456	0.019*
H1B	0.6347	0.6443	0.2855	0.019*
C2	0.4068 (2)	0.78419 (19)	0.41571 (12)	0.0201 (3)
H2A	0.3550	0.6634	0.4599	0.024*
H2B	0.5001	0.7996	0.4685	0.024*
C3	0.0821 (2)	0.90024 (19)	0.35316 (12)	0.0183 (3)
H3A	-0.0349	1.0155	0.3382	0.022*
H3B	0.0196	0.7956	0.4183	0.022*
C4	0.1736 (2)	0.83638 (18)	0.22515 (12)	0.0164 (3)
C5	0.4968 (2)	0.75696 (16)	0.06139 (12)	0.0132 (3)
C6	0.7205 (2)	0.71941 (17)	0.03016 (12)	0.0160 (3)
H6	0.7988	0.7192	0.0924	0.019*
C7	0.8283 (2)	0.68282 (17)	-0.09000 (12)	0.0161 (3)
H7	0.9795	0.6591	-0.1095	0.019*
C8	0.7182 (2)	0.68025 (17)	-0.18264 (12)	0.0143 (3)
C9	0.4967 (2)	0.72366 (18)	-0.15317 (12)	0.0158 (3)
C10	0.3858 (2)	0.76283 (17)	-0.03458 (12)	0.0160 (3)
H10	0.2345	0.7938	-0.0178	0.019*

*Atomic displacement parameters ( $\text{\AA}^2$ )*

	$U^{11}$	$U^{22}$	$U^{33}$	$U^{12}$	$U^{13}$	$U^{23}$
F1	0.0201 (5)	0.0495 (5)	0.0226 (4)	-0.0038 (4)	-0.0079 (4)	-0.0158 (4)

O1	0.0176 (5)	0.0226 (5)	0.0198 (5)	-0.0014 (4)	-0.0046 (4)	-0.0102 (4)
O2	0.0134 (5)	0.0476 (6)	0.0235 (5)	-0.0093 (5)	-0.0009 (4)	-0.0173 (5)
O3	0.0289 (6)	0.0285 (5)	0.0192 (5)	-0.0068 (4)	-0.0067 (4)	-0.0099 (4)
O4	0.0162 (5)	0.0297 (5)	0.0214 (5)	-0.0027 (4)	0.0012 (4)	-0.0078 (4)
N1	0.0125 (5)	0.0173 (5)	0.0125 (5)	-0.0031 (4)	-0.0020 (4)	-0.0049 (4)
N2	0.0192 (6)	0.0143 (5)	0.0148 (5)	-0.0029 (5)	-0.0020 (5)	-0.0028 (4)
C1	0.0135 (6)	0.0200 (7)	0.0159 (6)	-0.0013 (5)	-0.0055 (5)	-0.0056 (5)
C2	0.0196 (7)	0.0234 (7)	0.0158 (6)	0.0000 (6)	-0.0051 (5)	-0.0053 (5)
C3	0.0162 (7)	0.0218 (7)	0.0173 (6)	-0.0031 (5)	-0.0026 (5)	-0.0063 (5)
C4	0.0147 (7)	0.0177 (7)	0.0163 (6)	-0.0045 (5)	-0.0007 (5)	-0.0044 (5)
C5	0.0153 (6)	0.0117 (6)	0.0129 (6)	-0.0041 (5)	-0.0021 (5)	-0.0029 (5)
C6	0.0154 (7)	0.0182 (7)	0.0162 (6)	-0.0045 (5)	-0.0048 (5)	-0.0043 (5)
C7	0.0133 (6)	0.0181 (7)	0.0175 (6)	-0.0041 (5)	-0.0027 (5)	-0.0047 (5)
C8	0.0161 (7)	0.0134 (6)	0.0132 (6)	-0.0033 (5)	-0.0014 (5)	-0.0036 (5)
C9	0.0166 (7)	0.0180 (7)	0.0153 (6)	-0.0042 (5)	-0.0071 (5)	-0.0036 (5)
C10	0.0111 (6)	0.0188 (7)	0.0183 (6)	-0.0018 (5)	-0.0035 (5)	-0.0051 (5)

*Geometric parameters (Å, °)*

F1—C9	1.3438 (13)	C2—H2B	0.9900
O1—C3	1.4118 (14)	C3—C4	1.5223 (18)
O1—C2	1.4286 (16)	C3—H3A	0.9900
O2—C4	1.2193 (14)	C3—H3B	0.9900
O3—N2	1.2292 (13)	C5—C10	1.4050 (16)
O4—N2	1.2349 (13)	C5—C6	1.4061 (18)
N1—C4	1.3823 (16)	C6—C7	1.3831 (17)
N1—C5	1.4223 (16)	C6—H6	0.9500
N1—C1	1.4885 (15)	C7—C8	1.3910 (16)
N2—C8	1.4630 (16)	C7—H7	0.9500
C1—C2	1.5171 (18)	C8—C9	1.3912 (18)
C1—H1A	0.9900	C9—C10	1.3795 (18)
C1—H1B	0.9900	C10—H10	0.9500
C2—H2A	0.9900		
C3—O1—C2	107.55 (9)	C4—C3—H3B	108.5
C4—N1—C5	123.48 (11)	H3A—C3—H3B	107.5
C4—N1—C1	120.11 (10)	O2—C4—N1	124.24 (12)
C5—N1—C1	116.39 (10)	O2—C4—C3	117.50 (12)
O3—N2—O4	123.82 (11)	N1—C4—C3	118.25 (11)
O3—N2—C8	118.74 (11)	C10—C5—C6	118.08 (11)
O4—N2—C8	117.43 (10)	C10—C5—N1	122.88 (11)
N1—C1—C2	112.26 (10)	C6—C5—N1	119.03 (11)
N1—C1—H1A	109.2	C7—C6—C5	120.88 (12)
C2—C1—H1A	109.2	C7—C6—H6	119.6
N1—C1—H1B	109.2	C5—C6—H6	119.6
C2—C1—H1B	109.2	C6—C7—C8	120.88 (12)
H1A—C1—H1B	107.9	C6—C7—H7	119.6
O1—C2—C1	109.95 (10)	C8—C7—H7	119.6

O1—C2—H2A	109.7	C7—C8—C9	118.10 (12)
C1—C2—H2A	109.7	C7—C8—N2	118.60 (11)
O1—C2—H2B	109.7	C9—C8—N2	123.31 (11)
C1—C2—H2B	109.7	F1—C9—C10	116.88 (12)
H2A—C2—H2B	108.2	F1—C9—C8	121.12 (12)
O1—C3—C4	114.95 (11)	C10—C9—C8	121.99 (12)
O1—C3—H3A	108.5	C9—C10—C5	119.97 (12)
C4—C3—H3A	108.5	C9—C10—H10	120.0
O1—C3—H3B	108.5	C5—C10—H10	120.0
C4—N1—C1—C2	6.24 (15)	N1—C5—C6—C7	178.93 (10)
C5—N1—C1—C2	-172.77 (10)	C5—C6—C7—C8	-0.66 (19)
C3—O1—C2—C1	70.39 (13)	C6—C7—C8—C9	2.70 (19)
N1—C1—C2—O1	-46.84 (14)	C6—C7—C8—N2	-177.12 (11)
C2—O1—C3—C4	-52.83 (13)	O3—N2—C8—C7	168.82 (11)
C5—N1—C4—O2	9.8 (2)	O4—N2—C8—C7	-10.19 (16)
C1—N1—C4—O2	-169.11 (11)	O3—N2—C8—C9	-10.99 (18)
C5—N1—C4—C3	-170.40 (11)	O4—N2—C8—C9	170.00 (11)
C1—N1—C4—C3	10.66 (17)	C7—C8—C9—F1	176.97 (10)
O1—C3—C4—O2	-167.37 (11)	N2—C8—C9—F1	-3.22 (19)
O1—C3—C4—N1	12.84 (16)	C7—C8—C9—C10	-1.95 (19)
C4—N1—C5—C10	-1.57 (18)	N2—C8—C9—C10	177.87 (11)
C1—N1—C5—C10	177.41 (11)	F1—C9—C10—C5	-179.83 (10)
C4—N1—C5—C6	177.30 (11)	C8—C9—C10—C5	-0.87 (19)
C1—N1—C5—C6	-3.73 (16)	C6—C5—C10—C9	2.90 (18)
C10—C5—C6—C7	-2.16 (18)	N1—C5—C10—C9	-178.23 (11)

Hydrogen-bond geometry ( $\text{\AA}$ ,  $^\circ$ )

$D-H\cdots A$	$D-H$	$H\cdots A$	$D\cdots A$	$D-H\cdots A$
C6—H6 $\cdots$ O2 <sup>i</sup>	0.95	2.39	3.2635 (16)	153
C2—H2B $\cdots$ O3 <sup>ii</sup>	0.99	2.50	3.3244 (19)	140
C1—H1B $\cdots$ O4 <sup>iii</sup>	0.99	2.57	3.515 (2)	161

Symmetry codes: (i)  $x+1, y, z$ ; (ii)  $x, y, z+1$ ; (iii)  $-x+2, -y+1, -z$ .