

Acta Crystallographica Section E

Structure Reports

Online

ISSN 1600-5368

3-(7-Methoxy- β -carbolin-1-yl)propionic acid monohydrate

 Dong-Mei Dai,^{a*} Jia-Liang Zhong,^b Hui-Mei An^c and Jian-Wei Zou^a

^aKey Laboratory for Molecular Design and Nutrition Engineering, Ningbo Institute of Technology, Zhejiang University, 1st Qianhu Nan Road, Ningbo 315100, People's Republic of China, ^bShanghai Institute of Pharmaceutical Industry, 1320 Beijing Road (West), Shanghai 200040, People's Republic of China, and ^cBeijing Huilongguan Hospital, No.1 Nandian Huilongguan, Changping District, Beijing 100096, People's Republic of China

Correspondence e-mail: happyddm@126.com

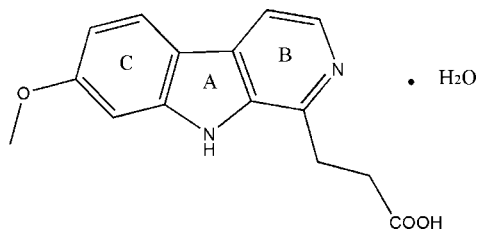
Received 18 March 2011; accepted 11 April 2011

 Key indicators: single-crystal X-ray study; $T = 296$ K; mean $\sigma(\text{C}-\text{C}) = 0.002$ Å; R factor = 0.039; wR factor = 0.116; data-to-parameter ratio = 11.8.

In the title compound, $\text{C}_{15}\text{H}_{14}\text{N}_2\text{O}_3 \cdot \text{H}_2\text{O}$ [systematic name: 3-(7-methoxy-9*H*-pyrido[3,4-*b*]indol-1-yl)propanoic acid monohydrate], the fused rings make dihedral angles of 0.4 (1), 1.1 (2) and 1.4 (2)°. In the crystal, the water molecule is involved in the formation of three independent hydrogen-bonded chains via $\text{O}-\text{H} \cdots \text{O}$ and $\text{N}-\text{H} \cdots \text{O}$ hydrogen bonds, while the carboxy group forms an intermolecular $\text{O}-\text{H} \cdots \text{N}$ hydrogen bond.

Related literature

For the isolation of the title compound, see: Kardono *et al.* (1991). For the preparation, see: Kardono *et al.* (1991). For its pharmacological activity, see: Kuo *et al.* (2003). For bond-length data, see: Allen *et al.* (1987).



Experimental

Crystal data

$\text{C}_{15}\text{H}_{14}\text{N}_2\text{O}_3 \cdot \text{H}_2\text{O}$
 $M_r = 288.30$
 Monoclinic, $P2_1/n$
 $a = 4.5114$ (1) Å
 $b = 10.8637$ (2) Å
 $c = 28.0865$ (3) Å
 $\beta = 92.414$ (1)°

$V = 1375.31$ (4) Å³
 $Z = 4$
 Cu $K\alpha$ radiation
 $\mu = 0.85$ mm⁻¹
 $T = 296$ K
 $0.12 \times 0.10 \times 0.05$ mm

Data collection

Bruker APEXII diffractometer
 9119 measured reflections
 2366 independent reflections

2048 reflections with $I > 2\sigma(I)$
 $R_{\text{int}} = 0.022$

Refinement

$R[F^2 > 2\sigma(F^2)] = 0.039$
 $wR(F^2) = 0.116$
 $S = 1.05$
 2366 reflections
 201 parameters

H atoms treated by a mixture of independent and constrained refinement
 $\Delta\rho_{\text{max}} = 0.49$ e Å⁻³
 $\Delta\rho_{\text{min}} = -0.17$ e Å⁻³

Table 1

Hydrogen-bond geometry (Å, °).

$D-\text{H} \cdots A$	$D-\text{H}$	$\text{H} \cdots A$	$D \cdots A$	$D-\text{H} \cdots A$
$\text{N13}-\text{H13A} \cdots \text{O}^{\text{W}^{\text{i}}}$	0.86	1.86	2.7224 (18)	180
$\text{O}^{\text{5}'}-\text{H}^{\text{5}'}\text{A} \cdots \text{N}^{\text{2}^{\text{ii}}}$	0.82	1.79	2.5965 (18)	169
$\text{O}^{\text{W}}-\text{H}^{\text{W}^{\text{A}}} \cdots \text{O}^{\text{5}^{\text{iii}}}$	0.85 (3)	1.92 (3)	2.7514 (19)	169 (2)
$\text{O}^{\text{W}}-\text{H}^{\text{W}^{\text{B}}} \cdots \text{O}^{\text{4}^{\text{iv}}}$	0.87 (3)	1.89 (3)	2.764 (2)	175 (2)

Symmetry codes: (i) $x - 1, y, z$; (ii) $-x - \frac{1}{2}, y + \frac{1}{2}, -z + \frac{1}{2}$; (iii) $x + 1, y, z$; (iv) $-x + \frac{1}{2}, y + \frac{1}{2}, -z + \frac{1}{2}$.

Data collection: *APEX2* (Bruker, 2005); cell refinement: *SAINT* (Bruker, 2005); data reduction: *SAINT*; program(s) used to solve structure: *SHELXS97* (Sheldrick, 2008); program(s) used to refine structure: *SHELXL97* (Sheldrick, 2008); molecular graphics: *SHELXTL* (Sheldrick, 2008); software used to prepare material for publication: *SHELXL97*.

Supplementary data and figures for this paper are available from the IUCr electronic archives (Reference: MW2003).

References

- Allen, F. H., Kennard, O., Watson, D. G., Brammer, L., Orpen, A. G. & Taylor, R. (1987). *J. Chem. Soc. Perkin Trans. 2*, pp. S1–19.
 Bruker (2005). *APEX2* and *SAINT*. Bruker AXS Inc., Madison, Wisconsin, USA.
 Kardono, L. B. S., Angerhofer, C. K., Tsauri, S., Padmawinata, K., Pezzuto, J. M. & Kinghorn, A. D. (1991). *J. Nat. Prod.* **54**, 1360–1367.
 Kuo, P. C., Shi, L. S., Damu, A. G., Su, C. R., Huang, C. H., Ke, C. H., Wu, J. B., Lin, A. J., Bastow, K. F., Lee, K. H. & Wu, T. S. (2003). *J. Nat. Prod.* **66**, 1324–1327.
 Sheldrick, G. M. (2008). *Acta Cryst.* **A64**, 112–122.

supporting information

Acta Cryst. (2011). E67, o1167 [doi:10.1107/S160053681101350X]

3-(7-Methoxy- β -carbolin-1-yl)propionic acid monohydrate

Dong-Mei Dai, Jia-Liang Zhong, Hui-Mei An and Jian-Wei Zou

S1. Comment

The title compound, (I), was isolated from the roots of *Eurycoma longifolia*. It is prepared according to the procedure of Kardono *et al.* (Kardono *et al.*, 1991) and recrystallized from methanol.

Bond lengths and angles are in agreement with reported literature values (Allen *et al.*, 1987). The rings (A, B and C) are each essentially planar with r.m.s deviations of 0.0018 (5) Å, 0.0027 (8) Å and 0.0052 (16) Å, respectively. The dihedral angles between the rings are A/B = 1.1 (2)°, A/C = 0.4 (1)° and B/C = 1.4 (2)°. The lattice water molecule is involved in formation of three independent hydrogen-bonded chains *via* O—H \cdots O and N—H \cdots O hydrogen bonds while the carboxy group forms an intermolecular O—H \cdots N hydrogen bond (Fig.2 and Table 1). The lattice water molecules could be considered to be a hydrogen-bond bridge which provide further stability to the crystal lattice.

S2. Experimental

The title compound was prepared according to the procedure of Kardono *et al.*, 1991. Crystals suitable for data collection were obtained by slow evaporation from methanol solution at 283 K over a period of two weeks.

S3. Refinement

Water H atoms were initially located in a difference Fourier map, and all other H atoms were constrained to an ideal geometry with C—H distances of 0.98 Å and $U_{\text{iso}}(\text{H}) = 1.2U_{\text{eq}}(\text{C})$ for CH; 0.97 Å and $U_{\text{iso}}(\text{H}) = 1.2U_{\text{eq}}(\text{C})$ for CH₂; 0.96 Å and $U_{\text{iso}}(\text{H}) = 1.5U_{\text{eq}}(\text{C})$ for CH₃; and 0.82 Å and $U_{\text{iso}}(\text{H}) = 1.5U_{\text{eq}}(\text{C})$ for OH atoms.

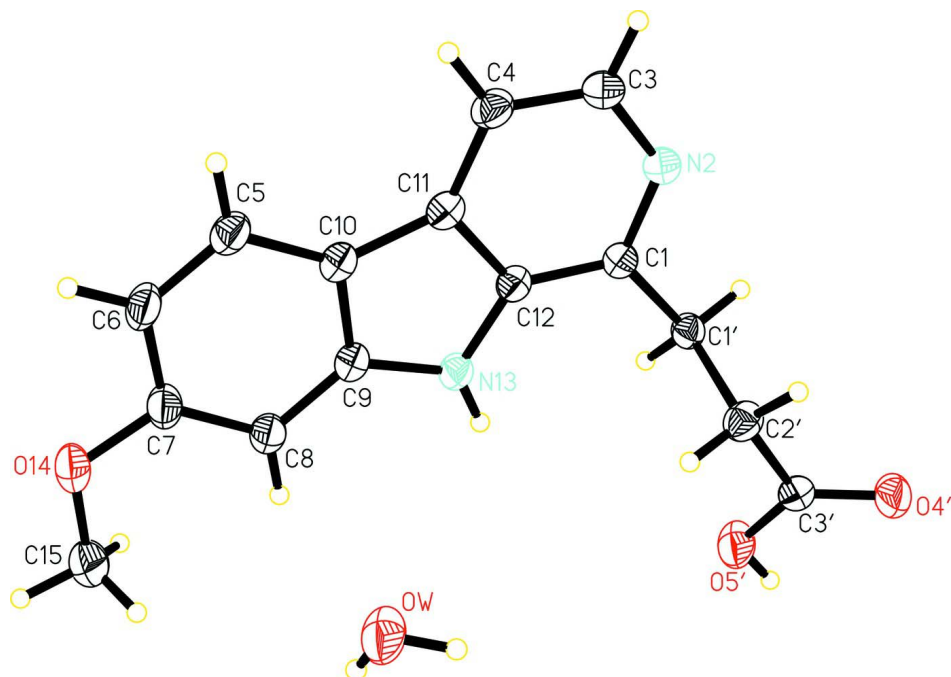


Figure 1

View of the molecule of (I) showing the atom-labelling scheme. Displacement ellipsoids are drawn at the 30% probability level.

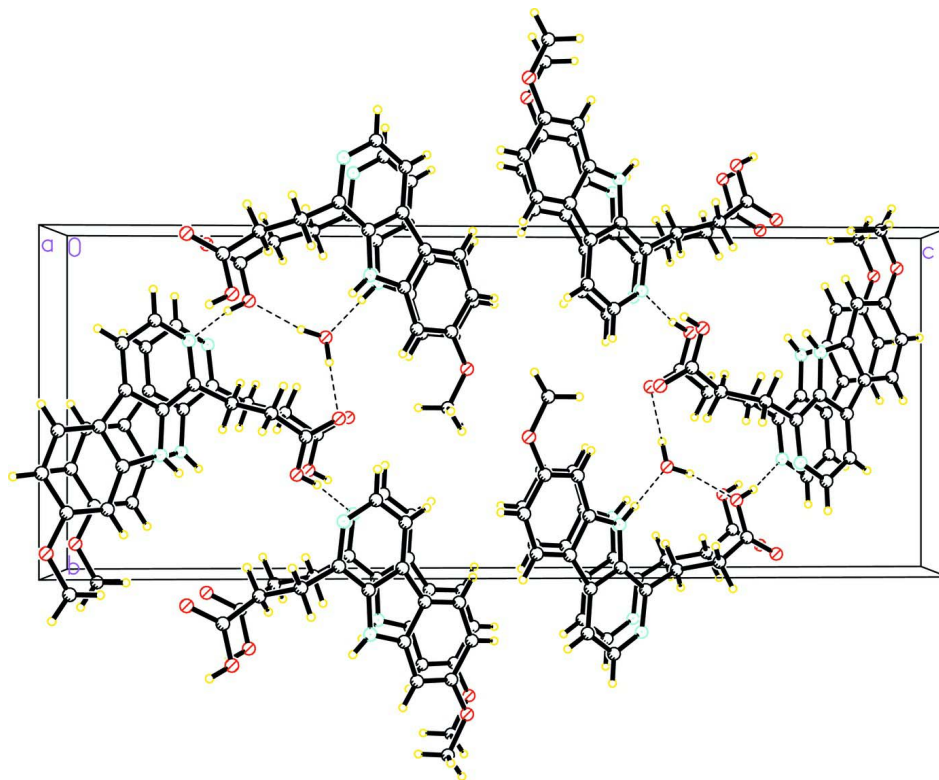


Figure 2

The packing of the title compound, viewed down the a axis. The dashed line indicates the hydrogen bond.

3-(7-methoxy-9H-pyrido[3,4-*b*]indol-1-yl)propanoic acid monohydrate

Crystal data

$C_{15}H_{14}N_2O_3 \cdot H_2O$
 $M_r = 288.30$
 Monoclinic, $P2_1/n$
 Hall symbol: -P 2yn
 $a = 4.5114$ (1) Å
 $b = 10.8637$ (2) Å
 $c = 28.0865$ (3) Å
 $\beta = 92.414$ (1)°
 $V = 1375.31$ (4) Å³
 $Z = 4$

$F(000) = 608$
 $D_x = 1.392$ Mg m⁻³
 Cu $K\alpha$ radiation, $\lambda = 1.54178$ Å
 Cell parameters from 3368 reflections
 $\theta = 3.2$ – 67.6 °
 $\mu = 0.85$ mm⁻¹
 $T = 296$ K
 Prism, colourless
 $0.12 \times 0.10 \times 0.05$ mm

Data collection

Bruker APEXII
 diffractometer
 Radiation source: sealed tube
 Graphite monochromator
 Detector resolution: 0 pixels mm⁻¹
 φ and ω scans
 9119 measured reflections

2366 independent reflections
 2048 reflections with $I > 2\sigma(I)$
 $R_{int} = 0.022$
 $\theta_{max} = 67.6$ °, $\theta_{min} = 3.2$ °
 $h = -4 \rightarrow 5$
 $k = -12 \rightarrow 12$
 $l = -33 \rightarrow 33$

Refinement

Refinement on F^2
 Least-squares matrix: full
 $R[F^2 > 2\sigma(F^2)] = 0.039$
 $wR(F^2) = 0.116$
 $S = 1.05$
 2366 reflections
 201 parameters
 0 restraints
 Primary atom site location: structure-invariant
 direct methods
 Secondary atom site location: difference Fourier
 map

Hydrogen site location: inferred from
 neighbouring sites
 H atoms treated by a mixture of independent
 and constrained refinement
 $w = 1/[\sigma^2(F_o^2) + (0.0672P)^2 + 0.3134P]$
 where $P = (F_o^2 + 2F_c^2)/3$
 $(\Delta/\sigma)_{max} = 0.006$
 $\Delta\rho_{max} = 0.49$ e Å⁻³
 $\Delta\rho_{min} = -0.17$ e Å⁻³
 Extinction correction: *SHELXL97* (Sheldrick,
 2008), $F_c^* = kF_c[1 + 0.001x F_c^2 \lambda^3 / \sin(2\theta)]^{-1/4}$
 Extinction coefficient: 0.0014 (3)

Special details

Geometry. All e.s.d.'s (except the e.s.d. in the dihedral angle between two l.s. planes) are estimated using the full covariance matrix. The cell e.s.d.'s are taken into account individually in the estimation of e.s.d.'s in distances, angles and torsion angles; correlations between e.s.d.'s in cell parameters are only used when they are defined by crystal symmetry. An approximate (isotropic) treatment of cell e.s.d.'s is used for estimating e.s.d.'s involving l.s. planes.

Refinement. Refinement of F^2 against ALL reflections. The weighted R -factor wR and goodness of fit S are based on F^2 , conventional R -factors R are based on F , with F set to zero for negative F^2 . The threshold expression of $F^2 > \sigma(F^2)$ is used only for calculating R -factors(gt) etc. and is not relevant to the choice of reflections for refinement. R -factors based on F^2 are statistically about twice as large as those based on F , and R -factors based on ALL data will be even larger.

Fractional atomic coordinates and isotropic or equivalent isotropic displacement parameters (Å²)

	x	y	z	U_{iso}^*/U_{eq}
C1	0.0343 (3)	0.45008 (14)	0.16867 (5)	0.0351 (3)

N2	0.0495 (3)	0.32718 (11)	0.16361 (5)	0.0402 (3)
C3	0.2158 (4)	0.27148 (15)	0.13080 (6)	0.0458 (4)
H3A	0.2177	0.1860	0.1291	0.055*
C4	0.3807 (4)	0.33780 (15)	0.10014 (6)	0.0438 (4)
H4A	0.4925	0.2985	0.0776	0.053*
C5	0.7128 (4)	0.57535 (16)	0.04262 (6)	0.0443 (4)
H5A	0.7804	0.5050	0.0276	0.053*
C6	0.8037 (4)	0.68936 (17)	0.02872 (6)	0.0487 (4)
H6A	0.9324	0.6962	0.0039	0.058*
C7	0.7055 (4)	0.79694 (16)	0.05145 (6)	0.0460 (4)
C8	0.5138 (4)	0.79159 (15)	0.08833 (6)	0.0427 (4)
H8A	0.4502	0.8624	0.1035	0.051*
C9	0.4200 (3)	0.67511 (14)	0.10178 (5)	0.0374 (4)
C10	0.5163 (3)	0.56590 (14)	0.07978 (5)	0.0381 (4)
C11	0.3771 (3)	0.46622 (14)	0.10355 (5)	0.0370 (3)
C12	0.2008 (3)	0.52071 (14)	0.13862 (5)	0.0350 (3)
N13	0.2299 (3)	0.64599 (12)	0.13699 (4)	0.0381 (3)
H13A	0.1437	0.6978	0.1550	0.046*
O14	0.8192 (3)	0.90335 (12)	0.03401 (5)	0.0602 (4)
C15	0.7305 (6)	1.01607 (19)	0.05520 (8)	0.0734 (7)
H15A	0.8250	1.0837	0.0399	0.110*
H15B	0.7877	1.0156	0.0885	0.110*
H15C	0.5191	1.0248	0.0514	0.110*
C1'	-0.1536 (3)	0.50276 (13)	0.20627 (5)	0.0364 (4)
H1'A	-0.3104	0.4449	0.2129	0.044*
H1'B	-0.2458	0.5780	0.1944	0.044*
C2'	0.0251 (4)	0.53087 (15)	0.25274 (6)	0.0437 (4)
H2'A	0.0966	0.4545	0.2670	0.052*
H2'B	0.1957	0.5811	0.2458	0.052*
C3'	-0.1657 (4)	0.59823 (14)	0.28756 (5)	0.0416 (4)
O4'	-0.2512 (4)	0.54636 (12)	0.32330 (4)	0.0655 (4)
O5'	-0.2315 (4)	0.70783 (11)	0.27682 (5)	0.0618 (4)
H5'A	-0.3268	0.7384	0.2981	0.25 (3)*
OW	0.9592 (4)	0.81052 (13)	0.19395 (6)	0.0690 (5)
HWA	0.894 (5)	0.789 (2)	0.2205 (10)	0.081 (8)*
HWB	0.882 (5)	0.883 (3)	0.1889 (9)	0.076 (7)*

Atomic displacement parameters (\AA^2)

	U^{11}	U^{22}	U^{33}	U^{12}	U^{13}	U^{23}
C1	0.0370 (8)	0.0361 (8)	0.0322 (7)	-0.0001 (6)	0.0022 (6)	-0.0003 (6)
N2	0.0474 (8)	0.0356 (7)	0.0381 (7)	0.0008 (5)	0.0062 (6)	-0.0012 (5)
C3	0.0572 (10)	0.0358 (8)	0.0450 (9)	0.0031 (7)	0.0082 (7)	-0.0047 (6)
C4	0.0489 (9)	0.0433 (9)	0.0397 (8)	0.0070 (7)	0.0089 (7)	-0.0061 (6)
C5	0.0431 (9)	0.0531 (10)	0.0374 (8)	0.0014 (7)	0.0097 (7)	-0.0048 (7)
C6	0.0482 (10)	0.0627 (11)	0.0363 (8)	-0.0041 (8)	0.0146 (7)	0.0008 (7)
C7	0.0487 (9)	0.0521 (10)	0.0375 (8)	-0.0068 (7)	0.0064 (7)	0.0072 (7)
C8	0.0483 (9)	0.0419 (9)	0.0383 (8)	-0.0002 (7)	0.0084 (7)	0.0012 (6)

C9	0.0384 (8)	0.0422 (8)	0.0318 (7)	0.0006 (6)	0.0049 (6)	0.0006 (6)
C10	0.0376 (8)	0.0443 (9)	0.0326 (7)	0.0012 (6)	0.0039 (6)	-0.0012 (6)
C11	0.0371 (8)	0.0411 (8)	0.0330 (7)	0.0028 (6)	0.0029 (6)	-0.0026 (6)
C12	0.0362 (8)	0.0372 (8)	0.0316 (7)	0.0019 (6)	0.0033 (6)	-0.0009 (6)
N13	0.0440 (7)	0.0350 (7)	0.0362 (6)	0.0021 (5)	0.0120 (5)	-0.0008 (5)
O14	0.0749 (9)	0.0543 (8)	0.0530 (7)	-0.0113 (6)	0.0232 (6)	0.0087 (6)
C15	0.1093 (18)	0.0520 (12)	0.0610 (12)	-0.0196 (11)	0.0274 (12)	0.0019 (9)
C1'	0.0378 (8)	0.0352 (8)	0.0367 (8)	-0.0002 (6)	0.0081 (6)	0.0004 (6)
C2'	0.0472 (9)	0.0451 (9)	0.0389 (8)	0.0062 (7)	0.0038 (7)	-0.0023 (7)
C3'	0.0501 (9)	0.0387 (8)	0.0365 (8)	-0.0028 (6)	0.0061 (7)	-0.0041 (6)
O4'	0.1062 (11)	0.0451 (7)	0.0477 (7)	-0.0034 (7)	0.0302 (7)	-0.0001 (5)
O5'	0.0916 (10)	0.0433 (7)	0.0528 (8)	0.0155 (6)	0.0297 (7)	0.0040 (5)
OW	0.1082 (13)	0.0425 (7)	0.0594 (9)	0.0149 (7)	0.0382 (8)	0.0023 (6)

Geometric parameters (Å, °)

C1—N2	1.3447 (19)	C10—C11	1.431 (2)
C1—C12	1.385 (2)	C11—C12	1.421 (2)
C1—C1'	1.4955 (19)	C12—N13	1.3683 (19)
N2—C3	1.355 (2)	N13—H13A	0.8600
C3—C4	1.367 (2)	O14—C15	1.426 (2)
C3—H3A	0.9300	C15—H15A	0.9600
C4—C11	1.399 (2)	C15—H15B	0.9600
C4—H4A	0.9300	C15—H15C	0.9600
C5—C6	1.367 (2)	C1'—C2'	1.535 (2)
C5—C10	1.401 (2)	C1'—H1'A	0.9700
C5—H5A	0.9300	C1'—H1'B	0.9700
C6—C7	1.412 (2)	C2'—C3'	1.518 (2)
C6—H6A	0.9300	C2'—H2'A	0.9700
C7—O14	1.364 (2)	C2'—H2'B	0.9700
C7—C8	1.378 (2)	C3'—O4'	1.228 (2)
C8—C9	1.392 (2)	C3'—O5'	1.261 (2)
C8—H8A	0.9300	O5'—H5'A	0.8200
C9—N13	1.3728 (19)	OW—HWA	0.85 (3)
C9—C10	1.414 (2)	OW—HWB	0.87 (3)
N2—C1—C12	117.01 (13)	N13—C12—C1	128.81 (13)
N2—C1—C1'	119.18 (13)	N13—C12—C11	109.50 (13)
C12—C1—C1'	123.80 (13)	C1—C12—C11	121.69 (14)
C1—N2—C3	123.20 (13)	C12—N13—C9	108.49 (12)
N2—C3—C4	121.64 (15)	C12—N13—H13A	125.8
N2—C3—H3A	119.2	C9—N13—H13A	125.8
C4—C3—H3A	119.2	C7—O14—C15	117.49 (14)
C3—C4—C11	118.33 (14)	O14—C15—H15A	109.5
C3—C4—H4A	120.8	O14—C15—H15B	109.5
C11—C4—H4A	120.8	H15A—C15—H15B	109.5
C6—C5—C10	119.07 (15)	O14—C15—H15C	109.5
C6—C5—H5A	120.5	H15A—C15—H15C	109.5

C10—C5—H5A	120.5	H15B—C15—H15C	109.5
C5—C6—C7	121.16 (15)	C1—C1'—C2'	112.56 (12)
C5—C6—H6A	119.4	C1—C1'—H1'A	109.1
C7—C6—H6A	119.4	C2'—C1'—H1'A	109.1
O14—C7—C8	124.26 (16)	C1—C1'—H1'B	109.1
O14—C7—C6	114.16 (15)	C2'—C1'—H1'B	109.1
C8—C7—C6	121.58 (15)	H1'A—C1'—H1'B	107.8
C7—C8—C9	116.74 (15)	C3'—C2'—C1'	110.62 (13)
C7—C8—H8A	121.6	C3'—C2'—H2'A	109.5
C9—C8—H8A	121.6	C1'—C2'—H2'A	109.5
N13—C9—C8	127.69 (14)	C3'—C2'—H2'B	109.5
N13—C9—C10	109.52 (13)	C1'—C2'—H2'B	109.5
C8—C9—C10	122.79 (14)	H2'A—C2'—H2'B	108.1
C5—C10—C9	118.65 (14)	O4'—C3'—O5'	123.37 (15)
C5—C10—C11	134.97 (15)	O4'—C3'—C2'	120.80 (15)
C9—C10—C11	106.38 (13)	O5'—C3'—C2'	115.82 (14)
C4—C11—C12	118.13 (14)	C3'—O5'—H5'A	109.5
C4—C11—C10	135.75 (14)	HWA—OW—HWB	104 (2)
C12—C11—C10	106.11 (13)		
C12—C1—N2—C3	-0.5 (2)	C5—C10—C11—C12	-179.98 (18)
C1'—C1—N2—C3	-179.45 (15)	C9—C10—C11—C12	0.48 (17)
C1—N2—C3—C4	-0.2 (3)	N2—C1—C12—N13	-178.44 (14)
N2—C3—C4—C11	0.6 (3)	C1'—C1—C12—N13	0.4 (2)
C10—C5—C6—C7	0.6 (3)	N2—C1—C12—C11	0.8 (2)
C5—C6—C7—O14	179.06 (15)	C1'—C1—C12—C11	179.69 (14)
C5—C6—C7—C8	-0.3 (3)	C4—C11—C12—N13	178.96 (13)
O14—C7—C8—C9	-179.74 (15)	C10—C11—C12—N13	-0.36 (17)
C6—C7—C8—C9	-0.5 (3)	C4—C11—C12—C1	-0.4 (2)
C7—C8—C9—N13	-179.63 (16)	C10—C11—C12—C1	-179.75 (14)
C7—C8—C9—C10	0.9 (2)	C1—C12—N13—C9	179.43 (15)
C6—C5—C10—C9	-0.3 (2)	C11—C12—N13—C9	0.09 (17)
C6—C5—C10—C11	-179.79 (17)	C8—C9—N13—C12	-179.34 (16)
N13—C9—C10—C5	179.93 (14)	C10—C9—N13—C12	0.22 (17)
C8—C9—C10—C5	-0.5 (2)	C8—C7—O14—C15	-0.7 (3)
N13—C9—C10—C11	-0.44 (17)	C6—C7—O14—C15	-179.95 (18)
C8—C9—C10—C11	179.14 (15)	N2—C1—C1'—C2'	95.18 (16)
C3—C4—C11—C12	-0.3 (2)	C12—C1—C1'—C2'	-83.68 (18)
C3—C4—C11—C10	178.79 (18)	C1—C1'—C2'—C3'	173.08 (13)
C5—C10—C11—C4	0.9 (3)	C1'—C2'—C3'—O4'	108.25 (18)
C9—C10—C11—C4	-178.66 (18)	C1'—C2'—C3'—O5'	-70.68 (19)

Hydrogen-bond geometry (\AA , $^\circ$)

$D-H\cdots A$	$D-H$	$H\cdots A$	$D\cdots A$	$D-H\cdots A$
N13—H13A \cdots OW ⁱ	0.86	1.86	2.7224 (18)	180
O5'—H5'A \cdots N2 ⁱⁱ	0.82	1.79	2.5965 (18)	169

$OW-HWA \cdots O5^{iii}$	0.85 (3)	1.92 (3)	2.7514 (19)	169 (2)
$OW-HWB \cdots O4^{iv}$	0.87 (3)	1.89 (3)	2.764 (2)	175 (2)

Symmetry codes: (i) $x-1, y, z$; (ii) $-x-1/2, y+1/2, -z+1/2$; (iii) $x+1, y, z$; (iv) $-x+1/2, y+1/2, -z+1/2$.