

Acta Crystallographica Section E

Structure Reports

Online

ISSN 1600-5368

3-(2,6-Dimethylanilino)imidazo[1,2-a]-pyridin-1-ium perchlorate

Gary S. Nichol,^{a*} Anuj Sharma^b and Hong-Yu Li^b

^aDepartment of Chemistry and Biochemistry, 1306 East University Boulevard, University of Arizona, Tucson, AZ 85721, USA, and ^bSouthwest Center for Drug Discovery and Development, College of Pharmacy, BIO5 Institute, University of Arizona, Tucson, AZ 85721, USA

Correspondence e-mail: gsnichol@email.arizona.edu

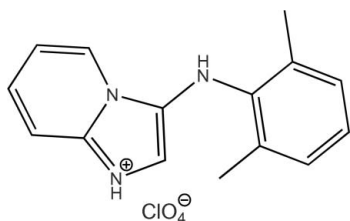
Received 12 April 2011; accepted 20 April 2011

Key indicators: single-crystal X-ray study; $T = 100$ K; mean $\sigma(\text{C}-\text{C}) = 0.001$ Å; R factor = 0.038; wR factor = 0.111; data-to-parameter ratio = 31.8.

The structure of the organic cation in the title compound, $\text{C}_{15}\text{H}_{16}\text{N}_3^+\cdot\text{ClO}_4^-$, contains two essentially planar rings. Mean planes fitted through all non-H atoms of each ring system have an r.m.s. deviation of 0.019 Å for the imidazole-based ring and 0.016 Å for the 2,6-dimethylphenyl ring. The angle between the two planes is 86.76 (2)°. In the crystal structure, $\text{N}-\text{H}\cdots\text{O}$ interactions form a one-dimensional chain, which propagates in the b -axis direction. $\text{C}-\text{H}\cdots\text{O}$ interactions are also found in the crystal packing.

Related literature

For background information on the Groebke–Blackburn synthesis, see: Bienaymé & Bouzid (1998); Blackburn *et al.* (1998); Groebke *et al.* (1998). For details of the chemical synthesis, see: Nichol *et al.* (2011); Sharma & Li (2011). For information on graph-set notation to describe hydrogen-bonding motifs, see: Bernstein *et al.* (1995).



Experimental

Crystal data

 $\text{C}_{15}\text{H}_{16}\text{N}_3^+\cdot\text{ClO}_4^-$ $M_r = 337.76$ Triclinic, $P\bar{1}$ $a = 8.6347$ (3) Å $b = 8.7663$ (3) Å $c = 11.5155$ (4) Å $\alpha = 70.668$ (2)° $\beta = 73.131$ (2)° $\gamma = 72.679$ (2)° $V = 767.24$ (5) Å³ $Z = 2$ Mo $K\alpha$ radiation $\mu = 0.27$ mm⁻¹ $T = 100$ K

0.26 × 0.16 × 0.16 mm

Data collection

Bruker Kappa APEXII DUO CCD diffractometer

Absorption correction: multi-scan (SADABS; Sheldrick, 1996)

 $T_{\min} = 0.932$, $T_{\max} = 0.957$ 27864 measured reflections
8640 independent reflections
6871 reflections with $I > 2\sigma(I)$
 $R_{\text{int}} = 0.031$

Refinement

 $R[F^2 > 2\sigma(F^2)] = 0.038$ $wR(F^2) = 0.111$ $S = 1.05$

8640 reflections

272 parameters

All H-atom parameters refined

 $\Delta\rho_{\text{max}} = 0.61$ e Å⁻³ $\Delta\rho_{\text{min}} = -0.51$ e Å⁻³

Table 1

Hydrogen-bond geometry (Å, °).

$D-\text{H}\cdots A$	$D-\text{H}$	$\text{H}\cdots A$	$D\cdots A$	$D-\text{H}\cdots A$
$\text{N2}-\text{H2N}\cdots\text{O1}^{\text{i}}$	0.869 (16)	1.955 (17)	2.8169 (10)	170.8 (15)
$\text{N3}-\text{H3N}\cdots\text{O3}$	0.832 (16)	2.216 (15)	2.8899 (10)	138.3 (14)
$\text{C2}-\text{H2}\cdots\text{O2}^{\text{ii}}$	0.911 (14)	2.547 (14)	3.3826 (11)	152.8 (12)
$\text{C3}-\text{H3}\cdots\text{O4}^{\text{ii}}$	0.971 (15)	2.559 (15)	3.2893 (12)	132.0 (11)

Symmetry codes: (i) $x, y+1, z$; (ii) $x+1, y, z$.

Data collection: APEX2 (Bruker, 2007); cell refinement: SAINT (Bruker, 2007); data reduction: SAINT; program(s) used to solve structure: SHELXTL (Sheldrick, 2008); program(s) used to refine structure: SHELXTL; molecular graphics: ORTEP-3 for Windows (Farrugia, 1997) and Mercury (Macrae *et al.*, 2008); software used to prepare material for publication: SHELXTL and publCIF (Westrip, 2010).

The diffractometer was purchased with funding from NSF grant No. CHE-0741837.

Supplementary data and figures for this paper are available from the IUCr electronic archives (Reference: KJ2175).

References

- Bernstein, J., Davis, R. E., Shimoni, L. & Chang, N.-L. (1995). *Angew. Chem. Int. Ed. Engl.* **34**, 1555–1573.
- Bienaymé, H. & Bouzid, K. (1998). *Angew. Chem. Int. Ed.* **37**, 2234–2237.
- Blackburn, C., Guan, B., Fleming, P., Shiosaki, K. & Tsai, S. (1998). *Tetrahedron Lett.* **39**, 3635–3638.
- Bruker (2007). APEX2 and SAINT. Bruker AXS Inc., Madison, Wisconsin, USA.
- Farrugia, L. J. (1997). *J. Appl. Cryst.* **30**, 565.
- Groebke, K., Weber, L. & Mehlin, F. (1998). *Synlett*, pp. 661–663.
- Macrae, C. F., Bruno, I. J., Chisholm, J. A., Edgington, P. R., McCabe, P., Pidcock, E., Rodriguez-Monge, L., Taylor, R., van de Streek, J. & Wood, P. A. (2008). *J. Appl. Cryst.* **41**, 466–470.
- Nichol, G. S., Sharma, A. & Li, H.-Y. (2011). *Acta Cryst.* **E67**, o833.
- Sharma, A. & Li, H.-Y. (2011). *Synlett*. In the press.
- Sheldrick, G. M. (1996). SADABS. University of Göttingen, Germany.
- Sheldrick, G. M. (2008). *Acta Cryst.* **A64**, 112–122.
- Westrip, S. P. (2010). *J. Appl. Cryst.* **43**, 920–925.

supporting information

Acta Cryst. (2011). E67, o1224 [doi:10.1107/S1600536811014735]

3-(2,6-Dimethylanilino)imidazo[1,2-a]pyridin-1-ium perchlorate

Gary S. Nichol, Anuj Sharma and Hong-Yu Li

S1. Comment

The Groebke–Blackburn reaction is the most popular way to prepare imidazo-azines from 2-aminoazines in a single-step (Groebke *et al.*, 1998; Bienaymé & Bouzid, 1998; Blackburn *et al.*, 1998). We have recently reported developments on this synthetic method (Nichol *et al.*, 2011; Sharma & Li, 2011) and present here the crystal structure of the title compound, determined as part of a larger study.

The asymmetric unit of the title compound is shown in Fig. 1. Molecular dimensions are unexceptional. Both ring systems are essentially planar (a mean plane fitted through atoms N1, N2, N3 C1 > C7 has an r.m.s. deviation of 0.019 Å; a mean plane fitted through atoms N3, C8 > C15 has an r.m.s. deviation of 0.016 Å) and the angle between both planes is 86.76 (2)°.

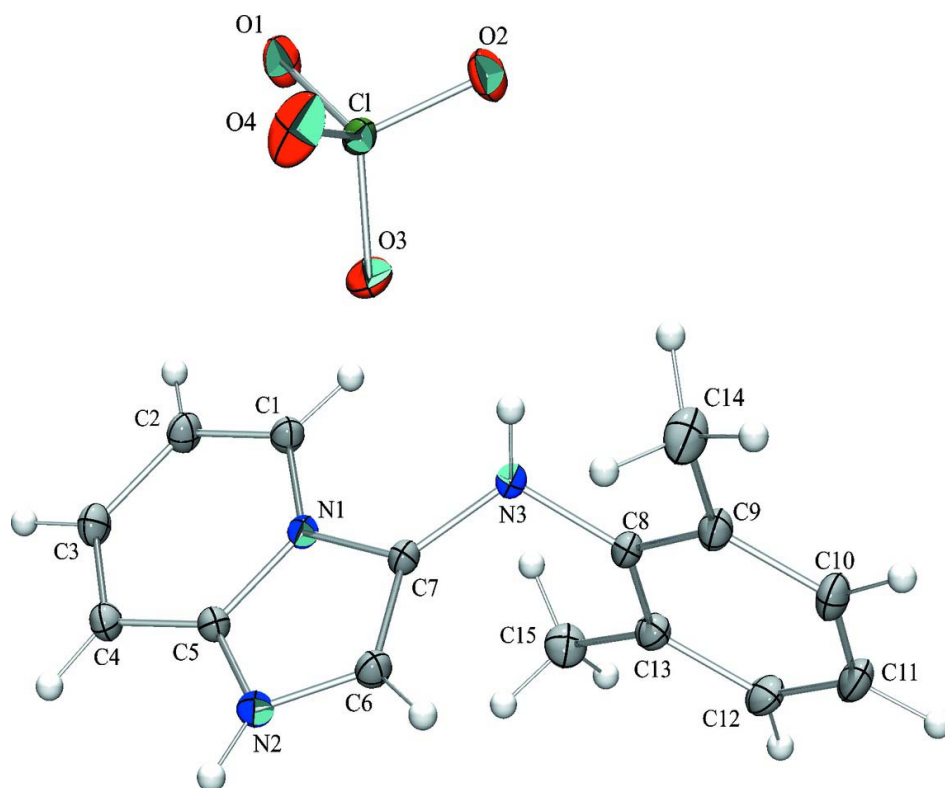
In the crystal, N—H···O interactions form a one-dimensional $C_2^2(9)$ chain (Bernstein *et al.* 1995), which propagates in the *b*-axis direction (Fig. 2). C—H···O interactions are also found in the crystal packing.

S2. Experimental

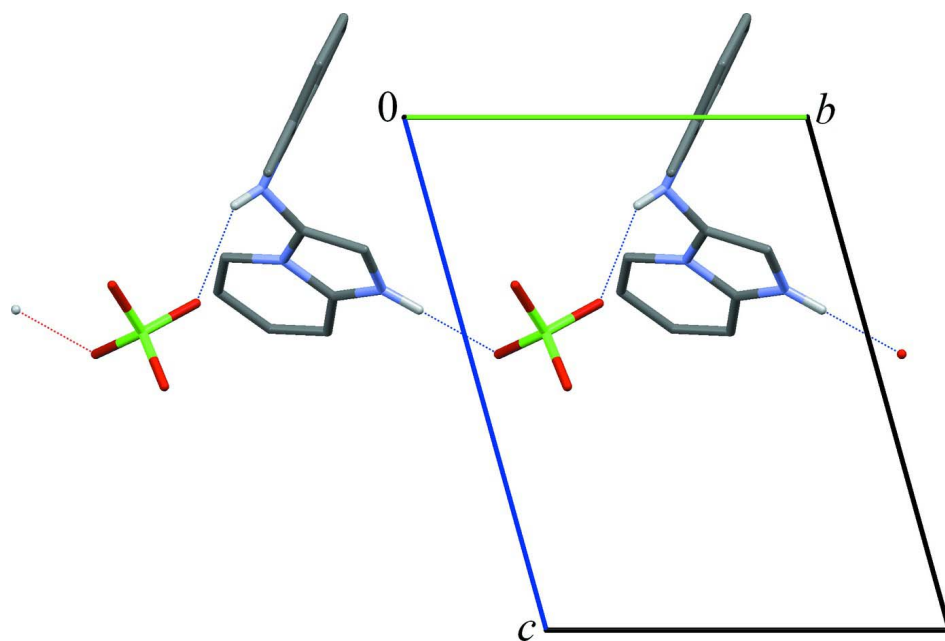
The synthesis is described in Sharma & Li (2011).

S3. Refinement

All H atoms were located from a difference Fourier map and are freely refined. N—H distances are 0.869 (16) and 0.832 (16) Å; C—H distances lie in the range 0.911 (4)–1.033 (17) Å.

**Figure 1**

The asymmetric unit of the title compound with displacement ellipsoids at the 50% probability level.

**Figure 2**

N—H...O interactions (dotted blue lines; dotted red lines indicate continuation) in the title compound.

3-(2,6-Dimethylanilino)imidazo[1,2-a]pyridin-1-ium perchlorate

Crystal data

 $C_{15}H_{16}N_3^+ \cdot ClO_4^-$ $M_r = 337.76$ Triclinic, $P\bar{1}$

Hall symbol: -P 1

 $a = 8.6347$ (3) Å $b = 8.7663$ (3) Å $c = 11.5155$ (4) Å $\alpha = 70.668$ (2)° $\beta = 73.131$ (2)° $\gamma = 72.679$ (2)° $V = 767.24$ (5) Å³ $Z = 2$ $F(000) = 352$ $D_x = 1.462$ Mg m⁻³Mo $K\alpha$ radiation, $\lambda = 0.71073$ Å

Cell parameters from 8544 reflections

 $\theta = 2.5$ – 39.0 ° $\mu = 0.27$ mm⁻¹ $T = 100$ K

Block, colourless

 $0.26 \times 0.16 \times 0.16$ mm

Data collection

Bruker Kappa APEXII DUO CCD

diffractometer

Radiation source: fine-focus sealed tube with

Miracol optics

Graphite monochromator

 φ and ω scans

Absorption correction: multi-scan

(SADABS; Sheldrick, 1996)

 $T_{\min} = 0.932$, $T_{\max} = 0.957$

27864 measured reflections

8640 independent reflections

6871 reflections with $I > 2\sigma(I)$ $R_{\text{int}} = 0.031$ $\theta_{\text{max}} = 38.6$ °, $\theta_{\text{min}} = 1.9$ ° $h = -13$ → 15 $k = -15$ → 15 $l = -20$ → 20

Refinement

Refinement on F^2

Least-squares matrix: full

 $R[F^2 > 2\sigma(F^2)] = 0.038$ $wR(F^2) = 0.111$ $S = 1.05$

8640 reflections

272 parameters

0 restraints

Primary atom site location: structure-invariant

direct methods

Secondary atom site location: difference Fourier map

Hydrogen site location: difference Fourier map

All H-atom parameters refined

 $w = 1/[\sigma^2(F_o^2) + (0.0581P)^2 + 0.1118P]$ where $P = (F_o^2 + 2F_c^2)/3$ $(\Delta/\sigma)_{\text{max}} = 0.001$ $\Delta\rho_{\text{max}} = 0.61$ e Å⁻³ $\Delta\rho_{\text{min}} = -0.51$ e Å⁻³

Special details

Geometry. All e.s.d.'s (except the e.s.d. in the dihedral angle between two l.s. planes) are estimated using the full covariance matrix. The cell e.s.d.'s are taken into account individually in the estimation of e.s.d.'s in distances, angles and torsion angles; correlations between e.s.d.'s in cell parameters are only used when they are defined by crystal symmetry. An approximate (isotropic) treatment of cell e.s.d.'s is used for estimating e.s.d.'s involving l.s. planes.

Refinement. Refinement of F^2 against ALL reflections. The weighted R -factor wR and goodness of fit S are based on F^2 , conventional R -factors R are based on F , with F set to zero for negative F^2 . The threshold expression of $F^2 > \sigma(F^2)$ is used only for calculating R -factors(gt) etc. and is not relevant to the choice of reflections for refinement. R -factors based on F^2 are statistically about twice as large as those based on F , and R -factors based on ALL data will be even larger.

Fractional atomic coordinates and isotropic or equivalent isotropic displacement parameters (Å²)

	x	y	z	$U_{\text{iso}}^*/U_{\text{eq}}$
N1	0.98956 (8)	0.60185 (8)	0.27803 (6)	0.01285 (10)
N2	0.85450 (9)	0.82744 (9)	0.33586 (7)	0.01631 (12)
H2N	0.825 (2)	0.904 (2)	0.3751 (15)	0.032 (4)*

N3	0.82987 (9)	0.59792 (9)	0.13756 (7)	0.01541 (11)
H3N	0.782 (2)	0.5193 (19)	0.1717 (14)	0.030 (4)*
C1	1.10989 (10)	0.45913 (10)	0.27281 (8)	0.01559 (13)
H1	1.1040 (18)	0.3970 (17)	0.2222 (13)	0.021 (3)*
C2	1.22970 (11)	0.41819 (11)	0.33968 (8)	0.01768 (14)
H2	1.3107 (17)	0.3243 (17)	0.3371 (13)	0.021 (3)*
C3	1.23050 (11)	0.52108 (11)	0.41221 (8)	0.01805 (14)
H3	1.3177 (18)	0.4918 (18)	0.4584 (14)	0.026 (3)*
C4	1.11017 (11)	0.66267 (11)	0.41743 (8)	0.01665 (13)
H4	1.1091 (17)	0.7333 (17)	0.4609 (13)	0.022 (3)*
C5	0.98717 (10)	0.70098 (9)	0.34900 (7)	0.01399 (12)
C6	0.77067 (10)	0.80959 (10)	0.25805 (8)	0.01618 (13)
H6	0.6720 (18)	0.8831 (18)	0.2376 (14)	0.025 (3)*
C7	0.85317 (10)	0.66985 (9)	0.22032 (7)	0.01359 (12)
C8	0.77759 (10)	0.70835 (9)	0.02641 (7)	0.01420 (12)
C9	0.62087 (11)	0.72027 (11)	0.00791 (8)	0.01716 (13)
C10	0.57589 (12)	0.82519 (12)	-0.10399 (9)	0.02081 (15)
H10	0.4688 (18)	0.8271 (17)	-0.1195 (13)	0.023 (3)*
C11	0.68217 (13)	0.91810 (12)	-0.19433 (9)	0.02220 (16)
H11	0.657 (2)	0.9887 (19)	-0.2776 (15)	0.033 (4)*
C12	0.83699 (12)	0.90525 (11)	-0.17397 (8)	0.02083 (15)
H12	0.915 (2)	0.9649 (19)	-0.2370 (15)	0.032 (4)*
C13	0.88820 (11)	0.79974 (10)	-0.06457 (8)	0.01662 (13)
C14	0.50193 (13)	0.62394 (14)	0.10725 (10)	0.02599 (19)
H14A	0.549 (2)	0.498 (2)	0.1225 (15)	0.035 (4)*
H14B	0.483 (2)	0.655 (2)	0.1867 (16)	0.037 (4)*
H14C	0.394 (2)	0.652 (2)	0.0884 (16)	0.037 (4)*
C15	1.05888 (12)	0.78164 (13)	-0.04629 (9)	0.02178 (16)
H15A	1.0548 (18)	0.8453 (18)	0.0085 (14)	0.027 (4)*
H15B	1.135 (2)	0.819 (2)	-0.1279 (16)	0.036 (4)*
H15C	1.1063 (19)	0.6657 (19)	-0.0109 (14)	0.028 (4)*
Cl	0.65990 (2)	0.20252 (2)	0.419315 (17)	0.01454 (5)
O1	0.79691 (9)	0.07166 (9)	0.46174 (7)	0.02290 (13)
O2	0.60990 (9)	0.15985 (9)	0.32753 (7)	0.02488 (14)
O3	0.71409 (13)	0.35550 (10)	0.36274 (8)	0.03427 (19)
O4	0.52640 (10)	0.21967 (12)	0.52460 (7)	0.03483 (19)

Atomic displacement parameters (\AA^2)

	U^{11}	U^{22}	U^{33}	U^{12}	U^{13}	U^{23}
N1	0.0136 (3)	0.0125 (2)	0.0123 (2)	-0.0019 (2)	-0.0038 (2)	-0.0031 (2)
N2	0.0182 (3)	0.0136 (3)	0.0171 (3)	-0.0008 (2)	-0.0050 (2)	-0.0054 (2)
N3	0.0204 (3)	0.0135 (3)	0.0136 (3)	-0.0049 (2)	-0.0072 (2)	-0.0011 (2)
C1	0.0161 (3)	0.0143 (3)	0.0155 (3)	-0.0001 (2)	-0.0046 (2)	-0.0047 (2)
C2	0.0157 (3)	0.0180 (3)	0.0183 (3)	0.0004 (3)	-0.0061 (3)	-0.0049 (3)
C3	0.0164 (3)	0.0210 (3)	0.0175 (3)	-0.0037 (3)	-0.0065 (3)	-0.0042 (3)
C4	0.0184 (3)	0.0180 (3)	0.0156 (3)	-0.0050 (3)	-0.0055 (3)	-0.0047 (3)
C5	0.0153 (3)	0.0135 (3)	0.0133 (3)	-0.0030 (2)	-0.0035 (2)	-0.0037 (2)

C6	0.0163 (3)	0.0144 (3)	0.0167 (3)	-0.0006 (2)	-0.0054 (2)	-0.0037 (2)
C7	0.0141 (3)	0.0132 (3)	0.0131 (3)	-0.0020 (2)	-0.0047 (2)	-0.0024 (2)
C8	0.0166 (3)	0.0133 (3)	0.0125 (3)	-0.0031 (2)	-0.0051 (2)	-0.0018 (2)
C9	0.0175 (3)	0.0185 (3)	0.0154 (3)	-0.0046 (3)	-0.0059 (3)	-0.0018 (3)
C10	0.0213 (4)	0.0218 (4)	0.0188 (3)	-0.0018 (3)	-0.0104 (3)	-0.0020 (3)
C11	0.0290 (4)	0.0189 (3)	0.0161 (3)	-0.0023 (3)	-0.0094 (3)	0.0000 (3)
C12	0.0270 (4)	0.0178 (3)	0.0149 (3)	-0.0072 (3)	-0.0039 (3)	0.0006 (3)
C13	0.0187 (3)	0.0157 (3)	0.0148 (3)	-0.0048 (3)	-0.0028 (2)	-0.0030 (2)
C14	0.0204 (4)	0.0336 (5)	0.0227 (4)	-0.0128 (4)	-0.0065 (3)	0.0016 (4)
C15	0.0186 (4)	0.0249 (4)	0.0222 (4)	-0.0087 (3)	-0.0026 (3)	-0.0048 (3)
Cl	0.01653 (8)	0.01267 (7)	0.01320 (7)	-0.00157 (5)	-0.00390 (6)	-0.00279 (5)
O1	0.0223 (3)	0.0221 (3)	0.0274 (3)	0.0056 (2)	-0.0147 (3)	-0.0118 (3)
O2	0.0258 (3)	0.0247 (3)	0.0311 (4)	0.0006 (3)	-0.0171 (3)	-0.0124 (3)
O3	0.0591 (6)	0.0231 (3)	0.0265 (4)	-0.0231 (4)	-0.0188 (4)	0.0067 (3)
O4	0.0263 (4)	0.0410 (5)	0.0207 (3)	0.0058 (3)	0.0040 (3)	-0.0066 (3)

Geometric parameters (Å, °)

N1—C1	1.3741 (10)	C8—C13	1.4039 (11)
N1—C5	1.3687 (10)	C9—C10	1.3966 (12)
N1—C7	1.3992 (10)	C9—C14	1.5071 (13)
N2—H2N	0.869 (16)	C10—H10	0.985 (14)
N2—C5	1.3408 (11)	C10—C11	1.3849 (14)
N2—C6	1.3740 (11)	C11—H11	0.999 (16)
N3—H3N	0.832 (16)	C11—C12	1.3891 (14)
N3—C7	1.3896 (10)	C12—H12	0.966 (16)
N3—C8	1.4262 (10)	C12—C13	1.3951 (12)
C1—H1	0.939 (14)	C13—C15	1.5034 (13)
C1—C2	1.3602 (12)	C14—H14A	1.033 (17)
C2—H2	0.911 (14)	C14—H14B	0.994 (17)
C2—C3	1.4203 (12)	C14—H14C	0.958 (17)
C3—H3	0.971 (15)	C15—H15A	0.958 (15)
C3—C4	1.3671 (12)	C15—H15B	0.994 (16)
C4—H4	0.912 (14)	C15—H15C	0.971 (15)
C4—C5	1.3999 (11)	Cl—O1	1.4528 (7)
C6—H6	0.941 (15)	Cl—O2	1.4375 (7)
C6—C7	1.3601 (11)	Cl—O3	1.4353 (8)
C8—C9	1.3985 (11)	Cl—O4	1.4239 (8)
C1—N1—C5	121.77 (7)	C8—C9—C10	118.57 (8)
C1—N1—C7	129.50 (7)	C8—C9—C14	120.81 (7)
C5—N1—C7	108.71 (6)	C10—C9—C14	120.61 (8)
H2N—N2—C5	123.8 (11)	C9—C10—H10	118.3 (8)
H2N—N2—C6	126.6 (11)	C9—C10—C11	121.14 (8)
C5—N2—C6	109.48 (7)	H10—C10—C11	120.4 (8)
H3N—N3—C7	114.8 (11)	C10—C11—H11	123.1 (9)
H3N—N3—C8	114.5 (11)	C10—C11—C12	119.44 (8)
C7—N3—C8	116.63 (7)	H11—C11—C12	117.3 (9)

N1—C1—H1	117.3 (9)	C11—C12—H12	121.1 (9)
N1—C1—C2	118.21 (7)	C11—C12—C13	121.33 (8)
H1—C1—C2	124.5 (9)	H12—C12—C13	117.5 (9)
C1—C2—H2	119.5 (9)	C8—C13—C12	118.23 (8)
C1—C2—C3	120.71 (8)	C8—C13—C15	121.02 (7)
H2—C2—C3	119.8 (9)	C12—C13—C15	120.74 (8)
C2—C3—H3	120.1 (9)	C9—C14—H14A	111.5 (9)
C2—C3—C4	120.84 (7)	C9—C14—H14B	108.0 (10)
H3—C3—C4	119.1 (9)	C9—C14—H14C	113.1 (10)
C3—C4—H4	123.1 (9)	H14A—C14—H14B	109.3 (13)
C3—C4—C5	117.33 (8)	H14A—C14—H14C	109.5 (14)
H4—C4—C5	119.6 (9)	H14B—C14—H14C	105.1 (14)
N1—C5—N2	107.30 (7)	C13—C15—H15A	110.8 (9)
N1—C5—C4	121.11 (7)	C13—C15—H15B	111.2 (10)
N2—C5—C4	131.58 (8)	C13—C15—H15C	109.7 (9)
N2—C6—H6	123.8 (9)	H15A—C15—H15B	108.4 (13)
N2—C6—C7	108.34 (7)	H15A—C15—H15C	109.6 (12)
H6—C6—C7	127.8 (9)	H15B—C15—H15C	107.1 (13)
N1—C7—N3	120.77 (7)	O1—C1—O2	108.58 (4)
N1—C7—C6	106.16 (7)	O1—C1—O3	109.13 (5)
N3—C7—C6	132.97 (7)	O1—C1—O4	109.21 (5)
N3—C8—C9	120.05 (7)	O2—C1—O3	109.54 (5)
N3—C8—C13	118.66 (7)	O2—C1—O4	110.96 (6)
C9—C8—C13	121.27 (7)	O3—C1—O4	109.39 (6)
C5—N1—C1—C2	-0.63 (12)	C1—N1—C7—C6	178.53 (8)
C7—N1—C1—C2	-179.04 (8)	C5—N1—C7—N3	176.88 (7)
N1—C1—C2—C3	-0.38 (13)	C5—N1—C7—C6	-0.04 (9)
C1—C2—C3—C4	0.61 (13)	C7—N3—C8—C9	-114.31 (9)
C2—C3—C4—C5	0.16 (13)	C7—N3—C8—C13	67.62 (10)
C6—N2—C5—N1	0.59 (9)	N3—C8—C9—C10	-177.75 (8)
C6—N2—C5—C4	-179.96 (9)	N3—C8—C9—C14	3.10 (13)
C1—N1—C5—N2	-179.04 (7)	C13—C8—C9—C10	0.27 (13)
C1—N1—C5—C4	1.44 (12)	C13—C8—C9—C14	-178.88 (9)
C7—N1—C5—N2	-0.34 (9)	C8—C9—C10—C11	-1.10 (14)
C7—N1—C5—C4	-179.86 (7)	C14—C9—C10—C11	178.05 (10)
C3—C4—C5—N1	-1.16 (12)	C9—C10—C11—C12	0.78 (15)
C3—C4—C5—N2	179.45 (9)	C10—C11—C12—C13	0.40 (15)
C5—N2—C6—C7	-0.62 (10)	C11—C12—C13—C8	-1.19 (14)
N2—C6—C7—N1	0.39 (9)	C11—C12—C13—C15	177.38 (9)
N2—C6—C7—N3	-175.99 (8)	N3—C8—C13—C12	178.90 (8)
C8—N3—C7—N1	-138.11 (8)	N3—C8—C13—C15	0.33 (12)
C8—N3—C7—C6	37.84 (13)	C9—C8—C13—C12	0.85 (13)
C1—N1—C7—N3	-4.55 (12)	C9—C8—C13—C15	-177.71 (8)

Hydrogen-bond geometry (Å, °)

<i>D</i> —H \cdots <i>A</i>	<i>D</i> —H	H \cdots <i>A</i>	<i>D</i> \cdots <i>A</i>	<i>D</i> —H \cdots <i>A</i>
N2—H2N \cdots O1 ⁱ	0.869 (16)	1.955 (17)	2.8169 (10)	170.8 (15)
N3—H3N \cdots O3	0.832 (16)	2.216 (15)	2.8899 (10)	138.3 (14)
C2—H2 \cdots O2 ⁱⁱ	0.911 (14)	2.547 (14)	3.3826 (11)	152.8 (12)
C3—H3 \cdots O4 ⁱⁱ	0.971 (15)	2.559 (15)	3.2893 (12)	132.0 (11)

Symmetry codes: (i) *x*, *y*+1, *z*; (ii) *x*+1, *y*, *z*.