

Acta Crystallographica Section E

Structure Reports

Online

ISSN 1600-5368

4-[(2'-Cyanobiphenyl-4-yl)methyl]-morpholin-4-ium tetrafluoridoborate

Xiu-juan Li,* Xian-gang Huang and Kang-jun Li

College of Food Engineering, RiZhao Polytechnic, RiZhao 276826, People's Republic of China

Correspondence e-mail: lxj818@163.com

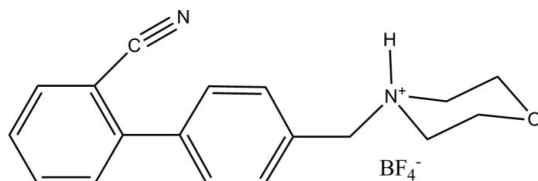
Received 21 March 2011; accepted 30 March 2011

 Key indicators: single-crystal X-ray study; $T = 298$ K; mean $\sigma(\text{C}-\text{C}) = 0.003$ Å; R factor = 0.067; wR factor = 0.202; data-to-parameter ratio = 17.1.

In the crystal structure of the title compound, $\text{C}_{18}\text{H}_{19}\text{N}_2\text{O}^+\text{-BF}_4^-$, bifurcated $\text{N}-\text{H}\cdots(\text{F},\text{F})$ hydrogen bonds link the protonated 4'-morpholinemethylbiphenyl-2-carbonitrile cations and slightly distorted tetrafluoroborate anions. $\pi-\pi$ interactions [centroid-centroid distance = $3.805(3)$ Å] help to consolidate the packing. The dihedral angle between the benzene rings in the cation is $57.24(11)^\circ$.

Related literature

For a related structure, see: SiMa (2010).



Experimental

Crystal data

$\text{C}_{18}\text{H}_{19}\text{N}_2\text{O}^+\text{-BF}_4^-$
 $M_r = 366.16$
 Triclinic, $P\bar{1}$
 $a = 9.059(6)$ Å
 $b = 9.859(8)$ Å
 $c = 10.597(8)$ Å
 $\alpha = 76.324(14)^\circ$
 $\beta = 83.71(2)^\circ$

$\gamma = 86.50(3)^\circ$
 $V = 913.5(12)$ Å³
 $Z = 2$
 Mo $K\alpha$ radiation
 $\mu = 0.11$ mm⁻¹
 $T = 298$ K
 $0.20 \times 0.20 \times 0.20$ mm

Data collection

Rigaku SCXmini diffractometer
 Absorption correction: multi-scan
 (*CrystalClear*; Rigaku, 2005)
 $T_{\text{min}} = 0.978$, $T_{\text{max}} = 0.978$

9817 measured reflections
 4098 independent reflections
 3039 reflections with $I > 2\sigma(I)$
 $R_{\text{int}} = 0.028$

Refinement

$R[F^2 > 2\sigma(F^2)] = 0.067$
 $wR(F^2) = 0.202$
 $S = 1.06$
 4098 reflections
 239 parameters
 1 restraint

H atoms treated by a mixture of independent and constrained refinement
 $\Delta\rho_{\text{max}} = 0.49$ e Å⁻³
 $\Delta\rho_{\text{min}} = -0.30$ e Å⁻³

Table 1

Hydrogen-bond geometry (Å, °).

| $D-\text{H}\cdots A$ | $D-\text{H}$ | $\text{H}\cdots A$ | $D\cdots A$ | $D-\text{H}\cdots A$ |
|--------------------------------------|--------------|--------------------|-------------|----------------------|
| $\text{N2}-\text{H2}\cdots\text{F1}$ | 0.90 (2) | 2.14 (2) | 2.902 (3) | 141 (2) |
| $\text{N2}-\text{H2}\cdots\text{F3}$ | 0.90 (2) | 2.35 (2) | 3.219 (3) | 161 (2) |

Data collection: *CrystalClear* (Rigaku, 2005); cell refinement: *CrystalClear*; data reduction: *CrystalClear*; program(s) used to solve structure: *SHELXS97* (Sheldrick, 2008); program(s) used to refine structure: *SHELXL97* (Sheldrick, 2008); molecular graphics: *SHELXTL* (Sheldrick, 2008); software used to prepare material for publication: *SHELXTL*.

The authors are grateful to RiZhao Polytechnic for support.

Supplementary data and figures for this paper are available from the IUCr electronic archives (Reference: JH2276).

References

- Rigaku (2005). *CrystalClear*. Rigaku Corporation, Tokyo, Japan.
 Sheldrick, G. M. (2008). *Acta Cryst.* **A64**, 112–122.
 SiMa, W. (2010). *Acta Cryst.* **E66**, o2042.

supporting information

Acta Cryst. (2011). E67, o1061 [doi:10.1107/S160053681101186X]

4-[(2'-Cyanobiphenyl-4-yl)methyl]morpholin-4-ium tetrafluoroborate

Xiu-juan Li, Xian-gang Huang and Kang-jun Li

S1. Comment

The crystal structure of 4'-morpholinemethylbiphenyl-2-carbonitrile with nitrate is known (SiMa, 2010).

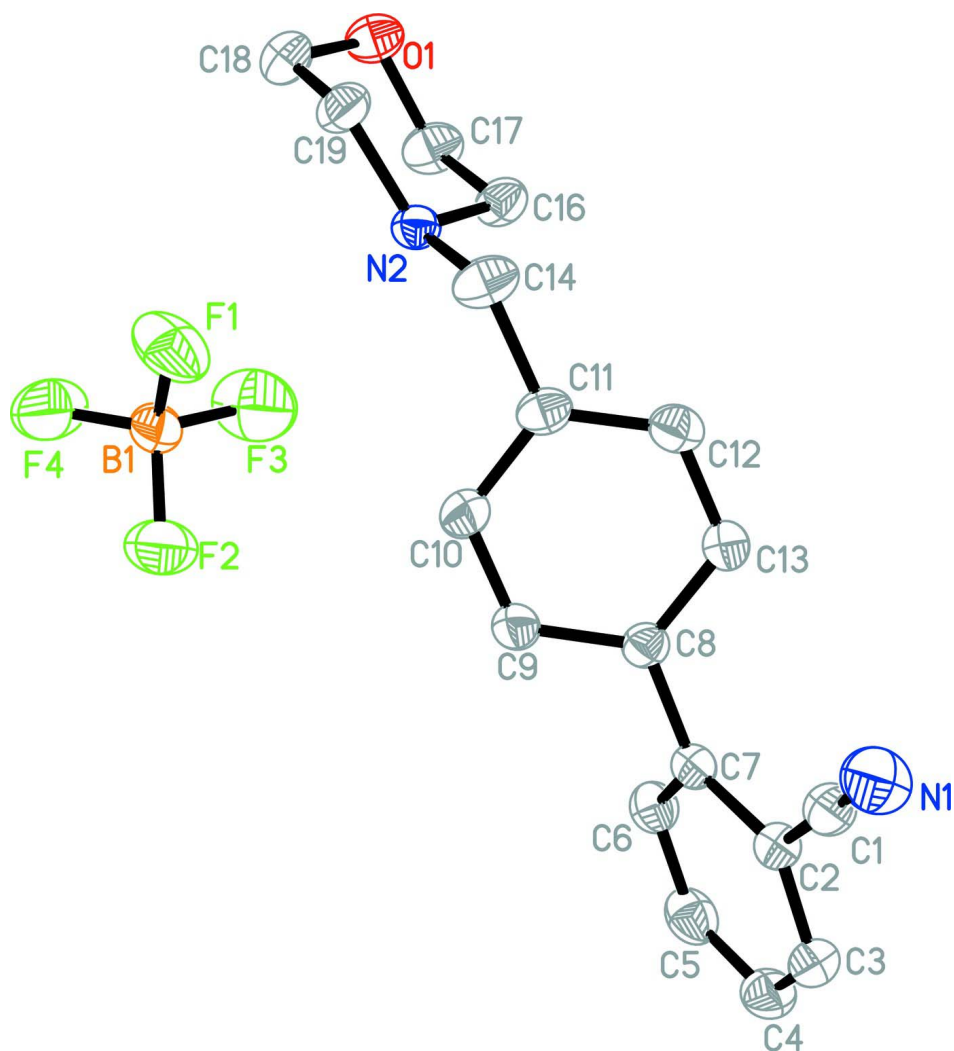
The asymmetric unit of the title compound is built up of one 4'-morpholinemethylbiphenyl-2-carbonitrile cation with the dihedral angle of 57.24 (11)° between two benzene rings and one tetrafluoroborate anion (Fig 1). The intermolecular N—H···F hydrogen bonds link the cations and anions to chains (Table 1). The π – π stacking interactions of adjacent cyanobenzene rings with a centroid–centroid distance of 3.805 (3)Å stabilize the crystal structure (Fig 2).

S2. Experimental

Tetrafluoroboric acid (10 mmol) was added dropwise under stirring to a solution of 4'-morpholinemethylbiphenyl-2-carbonitrile (10 mmol) ethanol solution. Water was added until all suspended substrates disappeared. Colorless single crystals of the title compound suitable for X-ray analysis were obtained by slow evaporation from the solution at room temperature after 5 d, giving a yield of *ca* 78%.

S3. Refinement

Positional parameters of all the H atoms for C atoms were calculated geometrically and were allowed to ride on the C atoms to which they are bonded, with $U_{\text{iso}}(\text{H}) = 1.2U_{\text{eq}}(\text{C})$. The H atoms bonded to N atoms were found in a difference Fourier map and refined with restraints for N—H distances of 0.87 (2).

**Figure 1**

The molecular structure of the title compound, with the atomic numbering scheme. Displacement ellipsoids are drawn at the 30% probability level.

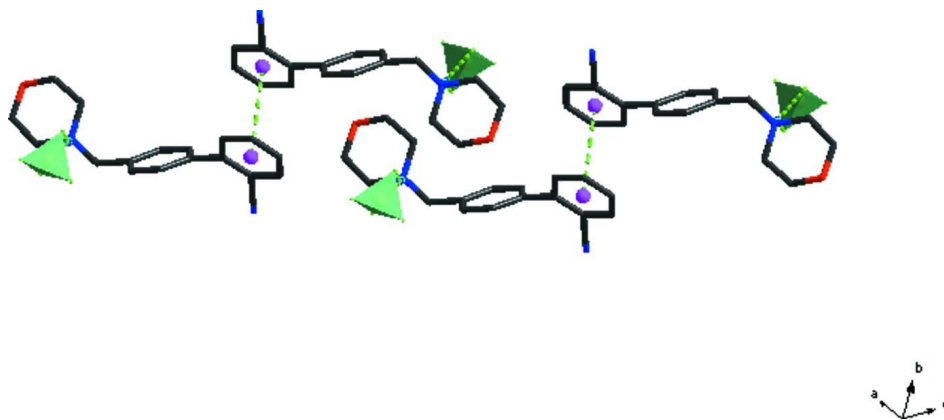


Figure 2

A view of the packing of the title compound. Dashed lines indicate hydrogen bonds and π - π interactions.

4-[(2'-Cyanobiphenyl-4-yl)methyl]morpholin-4-ium tetrafluoroborate*Crystal data*

$C_{18}H_{19}N_2O^+ \cdot BF_4^-$
 $M_r = 366.16$
 Triclinic, $P\bar{1}$
 Hall symbol: -P 1
 $a = 9.059$ (6) Å
 $b = 9.859$ (8) Å
 $c = 10.597$ (8) Å
 $\alpha = 76.324$ (14)°
 $\beta = 83.71$ (2)°
 $\gamma = 86.50$ (3)°
 $V = 913.5$ (12) Å³

$Z = 2$
 $F(000) = 380$
 $D_x = 1.331$ Mg m⁻³
 Mo $K\alpha$ radiation, $\lambda = 0.71073$ Å
 Cell parameters from 2199 reflections
 $\theta = 2.6$ – 27.4 °
 $\mu = 0.11$ mm⁻¹
 $T = 298$ K
 Prism, colourless
 $0.20 \times 0.20 \times 0.20$ mm

Data collection

Rigaku SCXmini
 diffractometer
 Radiation source: fine-focus sealed tube
 Graphite monochromator
 Detector resolution: 13.6612 pixels mm⁻¹
 ω scans
 Absorption correction: multi-scan
 (*CrystalClear*; Rigaku, 2005)
 $T_{\min} = 0.978$, $T_{\max} = 0.978$

9817 measured reflections
 4098 independent reflections
 3039 reflections with $I > 2\sigma(I)$
 $R_{\text{int}} = 0.028$
 $\theta_{\max} = 27.4$ °, $\theta_{\min} = 2.6$ °
 $h = -11 \rightarrow 11$
 $k = -12 \rightarrow 12$
 $l = -13 \rightarrow 13$

Refinement

Refinement on F^2
 Least-squares matrix: full
 $R[F^2 > 2\sigma(F^2)] = 0.067$
 $wR(F^2) = 0.202$
 $S = 1.06$
 4098 reflections
 239 parameters
 1 restraint
 Primary atom site location: structure-invariant
 direct methods

Secondary atom site location: difference Fourier
 map
 Hydrogen site location: inferred from
 neighbouring sites
 H atoms treated by a mixture of independent
 and constrained refinement
 $w = 1/[\sigma^2(F_o^2) + (0.1049P)^2 + 0.2107P]$
 where $P = (F_o^2 + 2F_c^2)/3$
 $(\Delta/\sigma)_{\max} < 0.001$
 $\Delta\rho_{\max} = 0.49$ e Å⁻³
 $\Delta\rho_{\min} = -0.30$ e Å⁻³

Special details

Geometry. All e.s.d.'s (except the e.s.d. in the dihedral angle between two l.s. planes) are estimated using the full covariance matrix. The cell e.s.d.'s are taken into account individually in the estimation of e.s.d.'s in distances, angles and torsion angles; correlations between e.s.d.'s in cell parameters are only used when they are defined by crystal symmetry. An approximate (isotropic) treatment of cell e.s.d.'s is used for estimating e.s.d.'s involving l.s. planes.

Refinement. Refinement of F^2 against ALL reflections. The weighted R -factor wR and goodness of fit S are based on F^2 , conventional R -factors R are based on F , with F set to zero for negative F^2 . The threshold expression of $F^2 > \sigma(F^2)$ is used only for calculating R -factors(gt) *etc.* and is not relevant to the choice of reflections for refinement. R -factors based on F^2 are statistically about twice as large as those based on F , and R -factors based on ALL data will be even larger.

Fractional atomic coordinates and isotropic or equivalent isotropic displacement parameters (\AA^2)

| | <i>x</i> | <i>y</i> | <i>z</i> | $U_{\text{iso}}^*/U_{\text{eq}}$ |
|------|--------------|--------------|--------------|----------------------------------|
| C1 | 0.9918 (2) | 0.3886 (3) | 0.3969 (2) | 0.0559 (5) |
| C2 | 1.0478 (2) | 0.2599 (2) | 0.47565 (19) | 0.0472 (5) |
| C3 | 1.1901 (2) | 0.2084 (3) | 0.4395 (2) | 0.0613 (6) |
| H3A | 1.2463 | 0.2570 | 0.3658 | 0.074* |
| C4 | 1.2460 (3) | 0.0863 (3) | 0.5129 (3) | 0.0662 (7) |
| H4A | 1.3404 | 0.0522 | 0.4890 | 0.079* |
| C5 | 1.1631 (3) | 0.0144 (3) | 0.6214 (2) | 0.0644 (6) |
| H5A | 1.2009 | -0.0692 | 0.6700 | 0.077* |
| C6 | 1.0234 (2) | 0.0653 (2) | 0.6593 (2) | 0.0533 (5) |
| H6A | 0.9695 | 0.0162 | 0.7341 | 0.064* |
| C7 | 0.9623 (2) | 0.1888 (2) | 0.58744 (18) | 0.0436 (4) |
| C8 | 0.8154 (2) | 0.24449 (19) | 0.63377 (18) | 0.0424 (4) |
| C9 | 0.7937 (2) | 0.2673 (2) | 0.75930 (19) | 0.0521 (5) |
| H9A | 0.8707 | 0.2464 | 0.8128 | 0.062* |
| C10 | 0.6601 (2) | 0.3203 (3) | 0.8053 (2) | 0.0564 (5) |
| H10A | 0.6487 | 0.3376 | 0.8885 | 0.068* |
| C11 | 0.5416 (2) | 0.3483 (2) | 0.7281 (2) | 0.0475 (5) |
| C12 | 0.5617 (2) | 0.3237 (2) | 0.6039 (2) | 0.0513 (5) |
| H12A | 0.4831 | 0.3409 | 0.5519 | 0.062* |
| C13 | 0.6973 (2) | 0.2736 (2) | 0.55624 (19) | 0.0480 (5) |
| H13A | 0.7098 | 0.2594 | 0.4720 | 0.058* |
| C14 | 0.3952 (2) | 0.4050 (2) | 0.7809 (2) | 0.0570 (6) |
| H14A | 0.4119 | 0.4897 | 0.8081 | 0.068* |
| H14B | 0.3293 | 0.4291 | 0.7120 | 0.068* |
| C16 | 0.2802 (2) | 0.1734 (2) | 0.8569 (2) | 0.0523 (5) |
| H16A | 0.3689 | 0.1267 | 0.8251 | 0.063* |
| H16B | 0.2158 | 0.1995 | 0.7870 | 0.063* |
| C17 | 0.2012 (3) | 0.0752 (2) | 0.9722 (3) | 0.0633 (6) |
| H17A | 0.1733 | -0.0066 | 0.9457 | 0.076* |
| H17B | 0.2678 | 0.0446 | 1.0400 | 0.076* |
| C18 | 0.1109 (3) | 0.2580 (3) | 1.0663 (2) | 0.0645 (6) |
| H18A | 0.1768 | 0.2267 | 1.1345 | 0.077* |
| H18B | 0.0222 | 0.3002 | 1.1034 | 0.077* |
| C19 | 0.1868 (2) | 0.3662 (2) | 0.9572 (2) | 0.0550 (5) |
| H19A | 0.1184 | 0.4039 | 0.8922 | 0.066* |
| H19B | 0.2162 | 0.4423 | 0.9914 | 0.066* |
| N1 | 0.9501 (3) | 0.4903 (3) | 0.3325 (2) | 0.0805 (7) |
| N2 | 0.32178 (17) | 0.30144 (17) | 0.89484 (16) | 0.0432 (4) |
| H2 | 0.384 (2) | 0.273 (3) | 0.958 (2) | 0.064 (7)* |
| O1 | 0.07139 (17) | 0.14212 (18) | 1.02265 (16) | 0.0638 (4) |
| B1 | 0.5558 (3) | 0.2295 (3) | 1.1710 (3) | 0.0583 (6) |
| F1 | 0.4631 (2) | 0.33813 (19) | 1.1168 (2) | 0.1044 (7) |
| F2 | 0.70030 (18) | 0.2643 (2) | 1.13544 (18) | 0.0962 (6) |
| F3 | 0.5250 (3) | 0.1264 (2) | 1.1129 (3) | 0.1298 (9) |
| F4 | 0.5317 (2) | 0.2022 (4) | 1.29990 (17) | 0.1466 (12) |

Atomic displacement parameters (Å²)

| | U^{11} | U^{22} | U^{33} | U^{12} | U^{13} | U^{23} |
|-----|-------------|-------------|-------------|--------------|--------------|--------------|
| C1 | 0.0508 (12) | 0.0678 (14) | 0.0446 (11) | -0.0121 (10) | -0.0021 (9) | -0.0030 (10) |
| C2 | 0.0432 (10) | 0.0557 (11) | 0.0435 (10) | -0.0053 (8) | -0.0042 (8) | -0.0122 (8) |
| C3 | 0.0464 (12) | 0.0853 (16) | 0.0557 (12) | -0.0068 (11) | 0.0029 (9) | -0.0257 (12) |
| C4 | 0.0478 (12) | 0.0833 (17) | 0.0756 (16) | 0.0131 (11) | -0.0107 (11) | -0.0360 (14) |
| C5 | 0.0664 (14) | 0.0620 (13) | 0.0698 (15) | 0.0143 (11) | -0.0248 (12) | -0.0215 (12) |
| C6 | 0.0572 (12) | 0.0519 (11) | 0.0503 (11) | 0.0005 (9) | -0.0105 (9) | -0.0090 (9) |
| C7 | 0.0411 (10) | 0.0486 (10) | 0.0421 (10) | -0.0043 (8) | -0.0064 (7) | -0.0107 (8) |
| C8 | 0.0398 (9) | 0.0442 (10) | 0.0409 (9) | -0.0062 (7) | -0.0018 (7) | -0.0049 (8) |
| C9 | 0.0424 (10) | 0.0708 (13) | 0.0423 (10) | -0.0109 (9) | -0.0033 (8) | -0.0099 (9) |
| C10 | 0.0463 (11) | 0.0756 (15) | 0.0490 (11) | -0.0132 (10) | 0.0053 (8) | -0.0196 (10) |
| C11 | 0.0411 (10) | 0.0427 (10) | 0.0556 (11) | -0.0074 (8) | 0.0039 (8) | -0.0077 (8) |
| C12 | 0.0441 (10) | 0.0528 (11) | 0.0541 (11) | -0.0020 (8) | -0.0094 (8) | -0.0047 (9) |
| C13 | 0.0476 (11) | 0.0542 (11) | 0.0423 (10) | -0.0019 (8) | -0.0062 (8) | -0.0106 (8) |
| C14 | 0.0495 (11) | 0.0417 (10) | 0.0723 (14) | -0.0059 (8) | 0.0111 (10) | -0.0054 (10) |
| C16 | 0.0475 (11) | 0.0501 (11) | 0.0614 (12) | -0.0106 (8) | 0.0070 (9) | -0.0208 (10) |
| C17 | 0.0554 (13) | 0.0523 (12) | 0.0777 (15) | -0.0121 (10) | 0.0077 (11) | -0.0101 (11) |
| C18 | 0.0563 (13) | 0.0836 (16) | 0.0521 (12) | -0.0033 (11) | 0.0075 (10) | -0.0183 (12) |
| C19 | 0.0485 (11) | 0.0586 (12) | 0.0594 (12) | 0.0031 (9) | 0.0049 (9) | -0.0224 (10) |
| N1 | 0.0768 (15) | 0.0817 (15) | 0.0685 (13) | -0.0147 (12) | -0.0147 (11) | 0.0177 (12) |
| N2 | 0.0370 (8) | 0.0448 (8) | 0.0486 (9) | -0.0033 (6) | -0.0026 (7) | -0.0125 (7) |
| O1 | 0.0457 (8) | 0.0748 (11) | 0.0671 (10) | -0.0151 (7) | 0.0091 (7) | -0.0123 (8) |
| B1 | 0.0525 (14) | 0.0645 (15) | 0.0594 (15) | 0.0077 (11) | -0.0145 (11) | -0.0158 (12) |
| F1 | 0.1023 (14) | 0.0844 (12) | 0.1375 (16) | 0.0327 (10) | -0.0665 (12) | -0.0316 (11) |
| F2 | 0.0606 (10) | 0.1263 (15) | 0.0970 (12) | -0.0091 (9) | -0.0087 (8) | -0.0145 (11) |
| F3 | 0.1141 (16) | 0.0880 (13) | 0.211 (3) | -0.0028 (11) | -0.0255 (16) | -0.0766 (16) |
| F4 | 0.0801 (13) | 0.281 (3) | 0.0580 (10) | 0.0229 (16) | -0.0057 (8) | -0.0060 (14) |

Geometric parameters (Å, °)

| | | | |
|--------|-----------|----------|-----------|
| C1—N1 | 1.140 (3) | C13—H13A | 0.9300 |
| C1—C2 | 1.441 (3) | C14—N2 | 1.506 (3) |
| C2—C7 | 1.403 (3) | C14—H14A | 0.9700 |
| C2—C3 | 1.403 (3) | C14—H14B | 0.9700 |
| C3—C4 | 1.372 (4) | C16—N2 | 1.493 (3) |
| C3—H3A | 0.9300 | C16—C17 | 1.509 (3) |
| C4—C5 | 1.371 (4) | C16—H16A | 0.9700 |
| C4—H4A | 0.9300 | C16—H16B | 0.9700 |
| C5—C6 | 1.386 (3) | C17—O1 | 1.428 (3) |
| C5—H5A | 0.9300 | C17—H17A | 0.9700 |
| C6—C7 | 1.393 (3) | C17—H17B | 0.9700 |
| C6—H6A | 0.9300 | C18—O1 | 1.408 (3) |
| C7—C8 | 1.486 (3) | C18—C19 | 1.510 (3) |
| C8—C9 | 1.392 (3) | C18—H18A | 0.9700 |
| C8—C13 | 1.395 (3) | C18—H18B | 0.9700 |
| C9—C10 | 1.374 (3) | C19—N2 | 1.505 (3) |

| | | | |
|--------------|-------------|---------------|-------------|
| C9—H9A | 0.9300 | C19—H19A | 0.9700 |
| C10—C11 | 1.396 (3) | C19—H19B | 0.9700 |
| C10—H10A | 0.9300 | N2—H2 | 0.904 (16) |
| C11—C12 | 1.386 (3) | B1—F4 | 1.324 (3) |
| C11—C14 | 1.509 (3) | B1—F3 | 1.363 (3) |
| C12—C13 | 1.384 (3) | B1—F2 | 1.363 (3) |
| C12—H12A | 0.9300 | B1—F1 | 1.374 (3) |
| | | | |
| N1—C1—C2 | 178.5 (3) | N2—C14—H14B | 109.2 |
| C7—C2—C3 | 120.7 (2) | C11—C14—H14B | 109.2 |
| C7—C2—C1 | 120.47 (18) | H14A—C14—H14B | 107.9 |
| C3—C2—C1 | 118.78 (19) | N2—C16—C17 | 110.42 (18) |
| C4—C3—C2 | 120.0 (2) | N2—C16—H16A | 109.6 |
| C4—C3—H3A | 120.0 | C17—C16—H16A | 109.6 |
| C2—C3—H3A | 120.0 | N2—C16—H16B | 109.6 |
| C5—C4—C3 | 120.1 (2) | C17—C16—H16B | 109.6 |
| C5—C4—H4A | 120.0 | H16A—C16—H16B | 108.1 |
| C3—C4—H4A | 120.0 | O1—C17—C16 | 110.81 (19) |
| C4—C5—C6 | 120.5 (2) | O1—C17—H17A | 109.5 |
| C4—C5—H5A | 119.8 | C16—C17—H17A | 109.5 |
| C6—C5—H5A | 119.8 | O1—C17—H17B | 109.5 |
| C5—C6—C7 | 121.3 (2) | C16—C17—H17B | 109.5 |
| C5—C6—H6A | 119.4 | H17A—C17—H17B | 108.1 |
| C7—C6—H6A | 119.4 | O1—C18—C19 | 111.95 (18) |
| C6—C7—C2 | 117.45 (19) | O1—C18—H18A | 109.2 |
| C6—C7—C8 | 120.07 (17) | C19—C18—H18A | 109.2 |
| C2—C7—C8 | 122.40 (18) | O1—C18—H18B | 109.2 |
| C9—C8—C13 | 118.51 (18) | C19—C18—H18B | 109.2 |
| C9—C8—C7 | 119.17 (17) | H18A—C18—H18B | 107.9 |
| C13—C8—C7 | 122.31 (18) | N2—C19—C18 | 110.08 (18) |
| C10—C9—C8 | 121.01 (19) | N2—C19—H19A | 109.6 |
| C10—C9—H9A | 119.5 | C18—C19—H19A | 109.6 |
| C8—C9—H9A | 119.5 | N2—C19—H19B | 109.6 |
| C9—C10—C11 | 120.4 (2) | C18—C19—H19B | 109.6 |
| C9—C10—H10A | 119.8 | H19A—C19—H19B | 108.2 |
| C11—C10—H10A | 119.8 | C16—N2—C19 | 109.84 (16) |
| C12—C11—C10 | 118.88 (19) | C16—N2—C14 | 112.09 (17) |
| C12—C11—C14 | 121.43 (19) | C19—N2—C14 | 111.26 (16) |
| C10—C11—C14 | 119.7 (2) | C16—N2—H2 | 107.1 (16) |
| C13—C12—C11 | 120.69 (19) | C19—N2—H2 | 105.8 (16) |
| C13—C12—H12A | 119.7 | C14—N2—H2 | 110.5 (16) |
| C11—C12—H12A | 119.7 | C18—O1—C17 | 110.10 (17) |
| C12—C13—C8 | 120.45 (19) | F4—B1—F3 | 116.5 (3) |
| C12—C13—H13A | 119.8 | F4—B1—F2 | 108.7 (2) |
| C8—C13—H13A | 119.8 | F3—B1—F2 | 109.0 (2) |
| N2—C14—C11 | 112.09 (17) | F4—B1—F1 | 109.9 (2) |
| N2—C14—H14A | 109.2 | F3—B1—F1 | 102.7 (2) |
| C11—C14—H14A | 109.2 | F2—B1—F1 | 109.9 (2) |

| | | | |
|----------------|--------------|-----------------|--------------|
| C7—C2—C3—C4 | 0.8 (3) | C9—C10—C11—C14 | 179.33 (19) |
| C1—C2—C3—C4 | 179.9 (2) | C10—C11—C12—C13 | -0.8 (3) |
| C2—C3—C4—C5 | 0.1 (3) | C14—C11—C12—C13 | 179.01 (18) |
| C3—C4—C5—C6 | -1.1 (4) | C11—C12—C13—C8 | 1.3 (3) |
| C4—C5—C6—C7 | 1.2 (3) | C9—C8—C13—C12 | -0.2 (3) |
| C5—C6—C7—C2 | -0.3 (3) | C7—C8—C13—C12 | 179.14 (18) |
| C5—C6—C7—C8 | -177.10 (19) | C12—C11—C14—N2 | 114.6 (2) |
| C3—C2—C7—C6 | -0.7 (3) | C10—C11—C14—N2 | -65.7 (3) |
| C1—C2—C7—C6 | -179.81 (19) | N2—C16—C17—O1 | 58.1 (3) |
| C3—C2—C7—C8 | 176.01 (18) | O1—C18—C19—N2 | -56.8 (3) |
| C1—C2—C7—C8 | -3.1 (3) | C17—C16—N2—C19 | -53.4 (2) |
| C6—C7—C8—C9 | 54.6 (3) | C17—C16—N2—C14 | -177.59 (18) |
| C2—C7—C8—C9 | -122.0 (2) | C18—C19—N2—C16 | 52.3 (2) |
| C6—C7—C8—C13 | -124.7 (2) | C18—C19—N2—C14 | 176.95 (18) |
| C2—C7—C8—C13 | 58.6 (3) | C11—C14—N2—C16 | -64.1 (2) |
| C13—C8—C9—C10 | -1.5 (3) | C11—C14—N2—C19 | 172.46 (17) |
| C7—C8—C9—C10 | 179.17 (19) | C19—C18—O1—C17 | 61.2 (2) |
| C8—C9—C10—C11 | 2.0 (3) | C16—C17—O1—C18 | -61.4 (3) |
| C9—C10—C11—C12 | -0.9 (3) | | |

Hydrogen-bond geometry (Å, °)

| <i>D—H...A</i> | <i>D—H</i> | <i>H...A</i> | <i>D...A</i> | <i>D—H...A</i> |
|----------------|------------|--------------|--------------|----------------|
| N2—H2...F1 | 0.90 (2) | 2.14 (2) | 2.902 (3) | 141 (2) |
| N2—H2...F3 | 0.90 (2) | 2.35 (2) | 3.219 (3) | 161 (2) |