

Acta Crystallographica Section E

## Structure Reports

Online

ISSN 1600-5368

# 1-Methyl-5-phenoxy-3-trifluoromethyl-1*H*-pyrazole-4-carbaldehyde oxime

 Hong Dai,<sup>a,b</sup> Wen-Ke Miao,<sup>a</sup> Shan-Shan Wu,<sup>a</sup> Xue Qin<sup>a</sup> and Jian-Xin Fang<sup>a\*</sup>

<sup>a</sup>State Key Laboratory and Institute of Elemento-Organic Chemistry, Nankai University, Tianjin 300071, People's Republic of China, and <sup>b</sup>College of Chemistry and Chemical Engineering, Nantong University, Nantong 226019, People's Republic of China

Correspondence e-mail: daihong\_2001@yahoo.com.cn

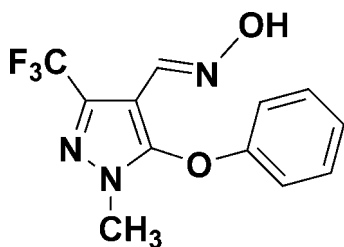
Received 13 February 2011; accepted 27 February 2011

 Key indicators: single-crystal X-ray study;  $T = 113$  K; mean  $\sigma(\text{C}-\text{C}) = 0.002$  Å;  $R$  factor = 0.037;  $wR$  factor = 0.101; data-to-parameter ratio = 11.9.

In the title compound,  $\text{C}_{12}\text{H}_{10}\text{F}_3\text{N}_3\text{O}_2$ , the dihedral angle between the phenyl and pyrazole rings is  $96.6(3)^\circ$ . In the crystal, pairs of  $\text{O}-\text{H}\cdots\text{N}$  hydrogen bonds link the molecules, forming inversion dimers. Weak intermolecular  $\text{C}-\text{H}\cdots\text{F}$  hydrogen bonds are also observed.

## Related literature

For the biological activity of pyrazole-4-carbaldehyde oxime ether derivatives, see: Hamaguchi *et al.* (1995); Motoba *et al.* (1992).



## Experimental

### Crystal data

 $\text{C}_{12}\text{H}_{10}\text{F}_3\text{N}_3\text{O}_2$ 
 $M_r = 285.23$ 

 Monoclinic,  $P2_1/c$ 
 $a = 7.5221(15)$  Å

 $b = 18.282(4)$  Å

 $c = 9.1002(18)$  Å

 $\beta = 90.58(3)^\circ$   
 $V = 1251.4(4)$  Å<sup>3</sup>  
 $Z = 4$   
 Mo  $K\alpha$  radiation

 $\mu = 0.14$  mm<sup>-1</sup>  
 $T = 113$  K  
 $0.24 \times 0.16 \times 0.14$  mm

### Data collection

 Bruker SMART 1000 CCD diffractometer  
 Absorption correction: multi-scan (SADABS; Sheldrick, 1996)  
 $T_{\min} = 0.968$ ,  $T_{\max} = 0.981$ 

 7050 measured reflections  
 2185 independent reflections  
 1910 reflections with  $I > 2\sigma(I)$   
 $R_{\text{int}} = 0.030$ 

### Refinement

 $R[F^2 > 2\sigma(F^2)] = 0.037$   
 $wR(F^2) = 0.101$   
 $S = 1.06$   
 2185 reflections

 183 parameters  
 H-atom parameters constrained  
 $\Delta\rho_{\max} = 0.25$  e Å<sup>-3</sup>  
 $\Delta\rho_{\min} = -0.24$  e Å<sup>-3</sup>
**Table 1**

Hydrogen-bond geometry (Å, °).

| $D-\text{H}\cdots A$                             | $D-\text{H}$ | $\text{H}\cdots A$ | $D\cdots A$ | $D-\text{H}\cdots A$ |
|--|--------------|--------------------|-------------|----------------------|
| $\text{C}10-\text{H}10\cdots\text{F}1^i$         | 0.93         | 2.54               | 3.147 (2)   | 123                  |
| $\text{O}2-\text{H}2\cdots\text{N}3^{\text{ii}}$ | 0.82         | 2.11               | 2.819 (2)   | 145                  |

 Symmetry codes: (i)  $x, -y + \frac{3}{2}, z + \frac{1}{2}$ ; (ii)  $-x, -y + 1, -z + 1$ .

Data collection: SMART (Bruker, 1998); cell refinement: SAINT (Bruker, 1999); data reduction: SAINT; program(s) used to solve structure: SHELXS97 (Sheldrick, 2008); program(s) used to refine structure: SHELXL97 (Sheldrick, 2008); molecular graphics: SHELXTL (Sheldrick, 2008); software used to prepare material for publication: SHELXTL.

This work was supported by the National Natural Science Foundation of China (NNSFC) (grant No. 20772068), the Science and Technology Projects Fund of Nantong City (grant Nos. K2010016, AS2010005), the Science Foundation of Nantong University (grant Nos. 09Z010, 09C001) and the Scientific Research Foundation for Talent Introduction of Nantong University.

Supplementary data and figures for this paper are available from the IUCr electronic archives (Reference: IS2677).

## References

- Bruker (1998). SMART. Bruker AXS Inc., Madison, Wisconsin, USA.  
 Bruker (1999). SAINT. Bruker AXS Inc., Madison, Wisconsin, USA.  
 Hamaguchi, H., Kajihara, O. & Katoh, M. (1995). *J. Pestic. Sci.* **20**, 173–175.  
 Motoba, K., Suzuki, T. & Uchida, M. (1992). *Pestic. Biochem. Physiol.* **43**, 37–44.  
 Sheldrick, G. M. (1996). SADABS. University of Göttingen, Germany.  
 Sheldrick, G. M. (2008). *Acta Cryst.* **A64**, 112–122.

## supporting information

*Acta Cryst.* (2011). E67, o775 [doi:10.1107/S1600536811007422]

## 1-Methyl-5-phenoxy-3-trifluoromethyl-1*H*-pyrazole-4-carbaldehyde oxime

Hong Dai, Wen-Ke Miao, Shan-Shan Wu, Xue Qin and Jian-Xin Fang

### S1. Comment

The pyrazole oxime unit plays an important role in many biologically active compounds. A large number of pyrazole oxime derivatives are well acknowledged to possess fungicidal, insecticidal, and acaricidal activities (Hamaguchi *et al.*, 1995). For example, fenpyroximate, a commercial acaricide, has been widely used for the control of mites on many crops (Motoba *et al.*, 1992).

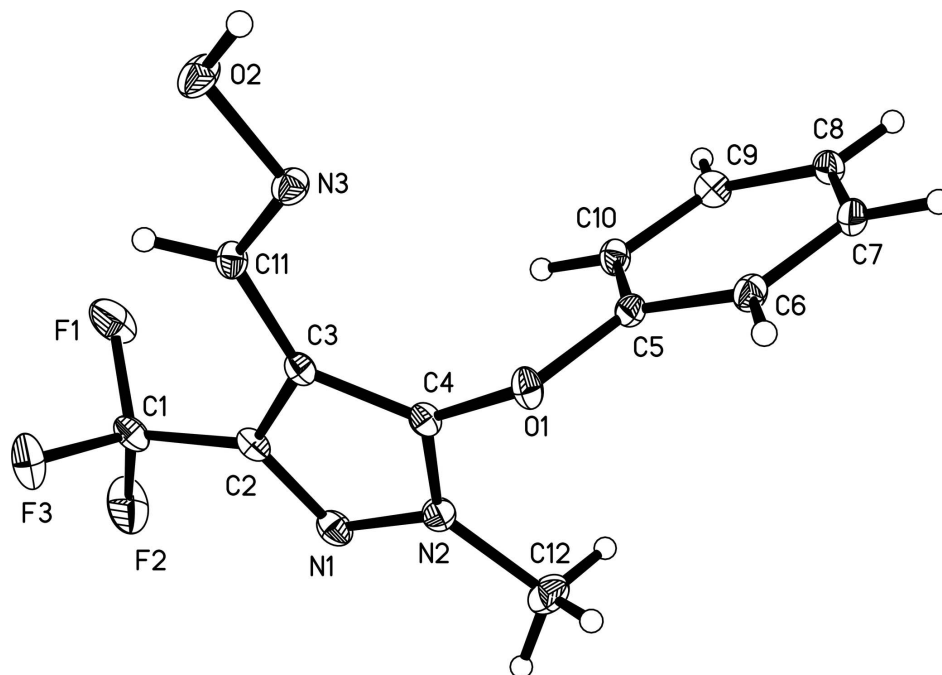
The title compound, (I), is an important intermediate for agrochemicals and drugs. It contains two planes, the pyrazole ring (N2/N1/C2–C4) and the phenyl ring (C5–C10) (Fig. 1). The dihedral angle between the phenyl ring and the pyrazole ring is 96.6 (3)°. In the crystal structure, the molecules are linked by intermolecular C—H···F and O—H···N hydrogen bonds (Table 1 and Fig. 2).

### S2. Experimental

To a stirred solution of hydroxylamine hydrochloride (7.5 mmol) and potassium hydroxide (10 mmol) in ethanol (30 ml), was added 1-methyl-3-(trifluoromethyl)-5-phenoxy-1*H*-pyrazole-4-carbaldehyde (5 mmol) at room temperature. The resulting mixture was heated to reflux for 3 h. The reaction mixture was poured into water (150 ml) and extracted with ethyl acetate (3 × 40 ml). The organic layer was washed with saturated brine (3 × 20 ml), and dried over anhydrous magnesium sulfate. The solvent was evaporated under reduced pressure, then the residue was recrystallized from ethyl acetate to give colourless crystals.

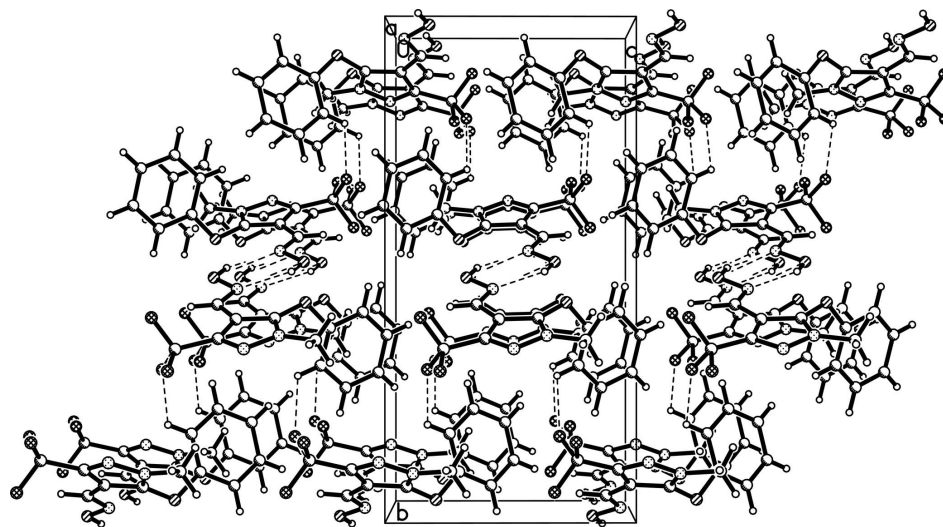
### S3. Refinement

All H atoms were placed in calculated positions, with O—H = 0.82 Å, C—H = 0.93 or 0.96 Å, and included in the final cycles of refinement using a riding model, with  $U_{\text{iso}}(\text{H}) = 1.2U_{\text{eq}}(\text{C})$  or  $1.5U_{\text{eq}}(\text{O, methylC})$ .



**Figure 1**

The molecular structure of the title compound, with displacement ellipsoids drawn at the 30% probability level.



**Figure 2**

A packing diagram of the title compound viewed along the *a* axis, with hydrogen bonds drawn as dashed lines.

### 1-Methyl-5-phenoxy-3-trifluoromethyl-1*H*-pyrazole-4-carbaldehyde oxime

#### Crystal data

$C_{12}H_{10}F_3N_3O_2$

$M_r = 285.23$

Monoclinic,  $P2_1/c$

Hall symbol:  $-P\ 2_1/c$

$a = 7.5221(15)\ \text{\AA}$

$b = 18.282(4)\ \text{\AA}$

$c = 9.1002(18)\ \text{\AA}$

$\beta = 90.58(3)^\circ$

$V = 1251.4(4)\ \text{\AA}^3$

$Z = 4$

$F(000) = 584$

$D_x = 1.514\ \text{Mg m}^{-3}$

Mo  $K\alpha$  radiation,  $\lambda = 0.71073 \text{ \AA}$   
 Cell parameters from 3687 reflections  
 $\theta = 2.2\text{--}27.9^\circ$   
 $\mu = 0.14 \text{ mm}^{-1}$

$T = 113 \text{ K}$   
 Monoclinic, colourless  
 $0.24 \times 0.16 \times 0.14 \text{ mm}$

*Data collection*

Bruker SMART 1000 CCD  
 diffractometer  
 Radiation source: fine-focus sealed tube  
 Graphite monochromator  
 $\varphi$  and  $\omega$  scans  
 Absorption correction: multi-scan  
 (SADABS; Sheldrick, 1996)  
 $T_{\min} = 0.968$ ,  $T_{\max} = 0.981$

7050 measured reflections  
 2185 independent reflections  
 1910 reflections with  $I > 2\sigma(I)$   
 $R_{\text{int}} = 0.030$   
 $\theta_{\max} = 25.0^\circ$ ,  $\theta_{\min} = 2.2^\circ$   
 $h = -8 \rightarrow 8$   
 $k = -21 \rightarrow 21$   
 $l = -7 \rightarrow 10$

*Refinement*

Refinement on  $F^2$   
 Least-squares matrix: full  
 $R[F^2 > 2\sigma(F^2)] = 0.037$   
 $wR(F^2) = 0.101$   
 $S = 1.06$   
 2185 reflections  
 183 parameters  
 0 restraints  
 Primary atom site location: structure-invariant  
 direct methods

Secondary atom site location: difference Fourier  
 map  
 Hydrogen site location: inferred from  
 neighbouring sites  
 H-atom parameters constrained  
 $w = 1/[\sigma^2(F_o^2) + (0.0599P)^2 + 0.3152P]$   
 where  $P = (F_o^2 + 2F_c^2)/3$   
 $(\Delta/\sigma)_{\max} = 0.002$   
 $\Delta\rho_{\max} = 0.25 \text{ e \AA}^{-3}$   
 $\Delta\rho_{\min} = -0.24 \text{ e \AA}^{-3}$

*Special details*

**Geometry.** All e.s.d.'s (except the e.s.d. in the dihedral angle between two l.s. planes) are estimated using the full covariance matrix. The cell e.s.d.'s are taken into account individually in the estimation of e.s.d.'s in distances, angles and torsion angles; correlations between e.s.d.'s in cell parameters are only used when they are defined by crystal symmetry. An approximate (isotropic) treatment of cell e.s.d.'s is used for estimating e.s.d.'s involving l.s. planes.

**Refinement.** Refinement of  $F^2$  against ALL reflections. The weighted  $R$ -factor  $wR$  and goodness of fit  $S$  are based on  $F^2$ , conventional  $R$ -factors  $R$  are based on  $F$ , with  $F$  set to zero for negative  $F^2$ . The threshold expression of  $F^2 > \sigma(F^2)$  is used only for calculating  $R$ -factors(gt) etc. and is not relevant to the choice of reflections for refinement.  $R$ -factors based on  $F^2$  are statistically about twice as large as those based on  $F$ , and  $R$ -factors based on ALL data will be even larger.

*Fractional atomic coordinates and isotropic or equivalent isotropic displacement parameters ( $\text{\AA}^2$ )*

|    | $x$          | $y$         | $z$          | $U_{\text{iso}}^*/U_{\text{eq}}$ |
|----|--------------|-------------|--------------|----------------------------------|
| F1 | 0.51229 (15) | 0.68729 (6) | 0.18505 (12) | 0.0482 (3)                       |
| F2 | 0.78938 (15) | 0.68491 (7) | 0.24060 (12) | 0.0473 (3)                       |
| F3 | 0.65809 (15) | 0.58843 (5) | 0.16378 (11) | 0.0372 (3)                       |
| O1 | 0.36787 (14) | 0.56226 (6) | 0.71364 (11) | 0.0222 (3)                       |
| O2 | 0.02826 (15) | 0.51556 (7) | 0.32441 (12) | 0.0296 (3)                       |
| H2 | -0.0560      | 0.4964      | 0.3661       | 0.044*                           |
| N1 | 0.70823 (17) | 0.64542 (7) | 0.51151 (15) | 0.0248 (3)                       |
| N2 | 0.62765 (17) | 0.62190 (7) | 0.63485 (14) | 0.0228 (3)                       |
| N3 | 0.15547 (16) | 0.53763 (7) | 0.42921 (14) | 0.0220 (3)                       |
| C1 | 0.6393 (2)   | 0.64718 (9) | 0.24941 (18) | 0.0242 (4)                       |
| C2 | 0.59492 (19) | 0.62818 (8) | 0.40404 (17) | 0.0203 (3)                       |
| C3 | 0.43940 (19) | 0.59357 (8) | 0.45480 (16) | 0.0184 (3)                       |

|      |              |              |              |            |
|------|--------------|--------------|--------------|------------|
| C4   | 0.46821 (19) | 0.59138 (8)  | 0.60477 (16) | 0.0189 (3) |
| C5   | 0.26932 (19) | 0.61152 (8)  | 0.79966 (16) | 0.0190 (3) |
| C6   | 0.1903 (2)   | 0.58217 (9)  | 0.92258 (16) | 0.0217 (3) |
| H6   | 0.2044       | 0.5329       | 0.9455       | 0.026*     |
| C7   | 0.0894 (2)   | 0.62741 (9)  | 1.01145 (16) | 0.0242 (4) |
| H7   | 0.0346       | 0.6083       | 1.0941       | 0.029*     |
| C8   | 0.0696 (2)   | 0.70110 (9)  | 0.97772 (17) | 0.0237 (4) |
| H8   | 0.0027       | 0.7314       | 1.0378       | 0.028*     |
| C9   | 0.1506 (2)   | 0.72911 (8)  | 0.85367 (18) | 0.0244 (4) |
| H9   | 0.1377       | 0.7784       | 0.8309       | 0.029*     |
| C10  | 0.2506 (2)   | 0.68442 (8)  | 0.76298 (17) | 0.0216 (3) |
| H10  | 0.3040       | 0.7032       | 0.6793       | 0.026*     |
| C11  | 0.2899 (2)   | 0.56673 (8)  | 0.36830 (16) | 0.0201 (3) |
| H11  | 0.2922       | 0.5709       | 0.2665       | 0.024*     |
| C12  | 0.7152 (2)   | 0.62954 (10) | 0.77800 (19) | 0.0334 (4) |
| H12A | 0.6683       | 0.6715       | 0.8278       | 0.050*     |
| H12B | 0.8407       | 0.6356       | 0.7646       | 0.050*     |
| H12C | 0.6940       | 0.5865       | 0.8356       | 0.050*     |

*Atomic displacement parameters (Å<sup>2</sup>)*

|     | $U^{11}$   | $U^{22}$    | $U^{33}$   | $U^{12}$    | $U^{13}$    | $U^{23}$    |
|-----|------------|-------------|------------|-------------|-------------|-------------|
| F1  | 0.0497 (7) | 0.0564 (7)  | 0.0389 (6) | 0.0268 (6)  | 0.0204 (5)  | 0.0248 (5)  |
| F2  | 0.0449 (7) | 0.0558 (7)  | 0.0417 (7) | -0.0275 (5) | 0.0218 (5)  | -0.0041 (5) |
| F3  | 0.0598 (7) | 0.0258 (5)  | 0.0262 (5) | 0.0001 (5)  | 0.0137 (5)  | -0.0028 (4) |
| O1  | 0.0292 (6) | 0.0187 (5)  | 0.0188 (6) | 0.0001 (4)  | 0.0072 (5)  | 0.0010 (4)  |
| O2  | 0.0249 (6) | 0.0424 (7)  | 0.0216 (6) | -0.0154 (5) | -0.0038 (5) | 0.0028 (5)  |
| N1  | 0.0202 (7) | 0.0250 (7)  | 0.0294 (7) | -0.0026 (5) | 0.0054 (6)  | -0.0023 (6) |
| N2  | 0.0210 (7) | 0.0247 (7)  | 0.0227 (7) | -0.0007 (5) | 0.0001 (5)  | -0.0020 (5) |
| N3  | 0.0208 (7) | 0.0241 (7)  | 0.0210 (7) | -0.0045 (5) | -0.0018 (5) | 0.0003 (5)  |
| C1  | 0.0220 (8) | 0.0214 (8)  | 0.0293 (8) | -0.0004 (6) | 0.0094 (7)  | 0.0001 (7)  |
| C2  | 0.0186 (7) | 0.0174 (7)  | 0.0251 (8) | 0.0001 (6)  | 0.0059 (6)  | -0.0011 (6) |
| C3  | 0.0184 (7) | 0.0171 (7)  | 0.0196 (8) | 0.0006 (6)  | 0.0046 (6)  | 0.0006 (6)  |
| C4  | 0.0196 (7) | 0.0169 (7)  | 0.0204 (8) | -0.0005 (6) | 0.0033 (6)  | 0.0001 (6)  |
| C5  | 0.0187 (7) | 0.0222 (8)  | 0.0162 (7) | -0.0012 (6) | -0.0012 (6) | -0.0027 (6) |
| C6  | 0.0238 (8) | 0.0228 (8)  | 0.0186 (8) | -0.0015 (6) | -0.0007 (6) | 0.0035 (6)  |
| C7  | 0.0223 (8) | 0.0346 (9)  | 0.0158 (7) | -0.0019 (7) | 0.0016 (6)  | 0.0022 (7)  |
| C8  | 0.0204 (8) | 0.0313 (9)  | 0.0194 (8) | 0.0002 (6)  | 0.0008 (6)  | -0.0061 (7) |
| C9  | 0.0260 (8) | 0.0199 (8)  | 0.0274 (9) | -0.0018 (6) | 0.0011 (7)  | -0.0007 (6) |
| C10 | 0.0239 (8) | 0.0227 (8)  | 0.0183 (8) | -0.0033 (6) | 0.0026 (6)  | 0.0021 (6)  |
| C11 | 0.0226 (8) | 0.0211 (7)  | 0.0167 (7) | -0.0022 (6) | 0.0028 (6)  | 0.0016 (6)  |
| C12 | 0.0325 (9) | 0.0381 (10) | 0.0295 (9) | -0.0027 (8) | -0.0106 (7) | -0.0037 (8) |

*Geometric parameters (Å, °)*

|       |             |        |           |
|-------|-------------|--------|-----------|
| F1—C1 | 1.3350 (19) | C5—C6  | 1.381 (2) |
| F2—C1 | 1.3260 (19) | C5—C10 | 1.381 (2) |
| F3—C1 | 1.3354 (19) | C6—C7  | 1.388 (2) |

|              |              |               |              |
|--------------|--------------|---------------|--------------|
| O1—C4        | 1.3601 (18)  | C6—H6         | 0.9300       |
| O1—C5        | 1.4089 (18)  | C7—C8         | 1.389 (2)    |
| O2—N3        | 1.4034 (17)  | C7—H7         | 0.9300       |
| O2—H2        | 0.8200       | C8—C9         | 1.386 (2)    |
| N1—C2        | 1.329 (2)    | C8—H8         | 0.9300       |
| N1—N2        | 1.3512 (19)  | C9—C10        | 1.388 (2)    |
| N2—C4        | 1.348 (2)    | C9—H9         | 0.9300       |
| N2—C12       | 1.460 (2)    | C10—H10       | 0.9300       |
| N3—C11       | 1.274 (2)    | C11—H11       | 0.9300       |
| C1—C2        | 1.491 (2)    | C12—H12A      | 0.9600       |
| C2—C3        | 1.412 (2)    | C12—H12B      | 0.9600       |
| C3—C4        | 1.380 (2)    | C12—H12C      | 0.9600       |
| C3—C11       | 1.452 (2)    |               |              |
|              |              |               |              |
| C4—O1—C5     | 116.97 (11)  | C5—C6—C7      | 118.88 (14)  |
| N3—O2—H2     | 109.5        | C5—C6—H6      | 120.6        |
| C2—N1—N2     | 104.25 (12)  | C7—C6—H6      | 120.6        |
| C4—N2—N1     | 111.62 (13)  | C6—C7—C8      | 120.46 (14)  |
| C4—N2—C12    | 127.78 (14)  | C6—C7—H7      | 119.8        |
| N1—N2—C12    | 120.58 (13)  | C8—C7—H7      | 119.8        |
| C11—N3—O2    | 111.28 (12)  | C9—C8—C7      | 119.43 (15)  |
| F2—C1—F1     | 107.08 (14)  | C9—C8—H8      | 120.3        |
| F2—C1—F3     | 106.74 (13)  | C7—C8—H8      | 120.3        |
| F1—C1—F3     | 105.38 (14)  | C8—C9—C10     | 120.79 (15)  |
| F2—C1—C2     | 112.16 (14)  | C8—C9—H9      | 119.6        |
| F1—C1—C2     | 112.09 (13)  | C10—C9—H9     | 119.6        |
| F3—C1—C2     | 112.92 (13)  | C5—C10—C9     | 118.60 (14)  |
| N1—C2—C3     | 113.14 (14)  | C5—C10—H10    | 120.7        |
| N1—C2—C1     | 119.44 (13)  | C9—C10—H10    | 120.7        |
| C3—C2—C1     | 127.41 (14)  | N3—C11—C3     | 121.26 (14)  |
| C4—C3—C2     | 102.36 (13)  | N3—C11—H11    | 119.4        |
| C4—C3—C11    | 129.75 (14)  | C3—C11—H11    | 119.4        |
| C2—C3—C11    | 127.89 (14)  | N2—C12—H12A   | 109.5        |
| N2—C4—O1     | 120.87 (13)  | N2—C12—H12B   | 109.5        |
| N2—C4—C3     | 108.62 (13)  | H12A—C12—H12B | 109.5        |
| O1—C4—C3     | 130.46 (13)  | N2—C12—H12C   | 109.5        |
| C6—C5—C10    | 121.83 (14)  | H12A—C12—H12C | 109.5        |
| C6—C5—O1     | 115.79 (13)  | H12B—C12—H12C | 109.5        |
| C10—C5—O1    | 122.38 (13)  |               |              |
|              |              |               |              |
| C2—N1—N2—C4  | -0.42 (16)   | C5—O1—C4—C3   | -103.49 (18) |
| C2—N1—N2—C12 | 178.30 (14)  | C2—C3—C4—N2   | -0.38 (16)   |
| N2—N1—C2—C3  | 0.17 (17)    | C11—C3—C4—N2  | 178.89 (15)  |
| N2—N1—C2—C1  | 179.17 (13)  | C2—C3—C4—O1   | -177.58 (14) |
| F2—C1—C2—N1  | -4.1 (2)     | C11—C3—C4—O1  | 1.7 (3)      |
| F1—C1—C2—N1  | -124.64 (15) | C4—O1—C5—C6   | -170.60 (13) |
| F3—C1—C2—N1  | 116.52 (16)  | C4—O1—C5—C10  | 10.2 (2)     |
| F2—C1—C2—C3  | 174.70 (14)  | C10—C5—C6—C7  | 0.0 (2)      |

|              |              |              |              |
|--------------|--------------|--------------|--------------|
| F1—C1—C2—C3  | 54.2 (2)     | O1—C5—C6—C7  | -179.25 (12) |
| F3—C1—C2—C3  | -64.6 (2)    | C5—C6—C7—C8  | -0.5 (2)     |
| N1—C2—C3—C4  | 0.13 (17)    | C6—C7—C8—C9  | 0.5 (2)      |
| C1—C2—C3—C4  | -178.78 (15) | C7—C8—C9—C10 | 0.1 (2)      |
| N1—C2—C3—C11 | -179.16 (14) | C6—C5—C10—C9 | 0.6 (2)      |
| C1—C2—C3—C11 | 1.9 (3)      | O1—C5—C10—C9 | 179.76 (13)  |
| N1—N2—C4—O1  | 178.05 (12)  | C8—C9—C10—C5 | -0.6 (2)     |
| C12—N2—C4—O1 | -0.6 (2)     | O2—N3—C11—C3 | -179.74 (13) |
| N1—N2—C4—C3  | 0.52 (17)    | C4—C3—C11—N3 | 2.3 (3)      |
| C12—N2—C4—C3 | -178.08 (15) | C2—C3—C11—N3 | -178.62 (15) |
| C5—O1—C4—N2  | 79.59 (17)   |              |              |

*Hydrogen-bond geometry (Å, °)*

| <i>D</i> —H $\cdots$ <i>A</i>    | <i>D</i> —H | H $\cdots$ <i>A</i> | <i>D</i> $\cdots$ <i>A</i> | <i>D</i> —H $\cdots$ <i>A</i> |
|----------------------------------|-------------|---------------------|----------------------------|-------------------------------|
| C10—H10 $\cdots$ F1 <sup>i</sup> | 0.93        | 2.54                | 3.147 (2)                  | 123                           |
| O2—H2 $\cdots$ N3 <sup>ii</sup>  | 0.82        | 2.11                | 2.819 (2)                  | 145                           |

Symmetry codes: (i)  $x, -y+3/2, z+1/2$ ; (ii)  $-x, -y+1, -z+1$ .