

Acta Crystallographica Section E

## Structure Reports

Online

ISSN 1600-5368

# Bis(3-hydroxymethylanilinium) hexachloridostannate(IV)

 Sofiane Bouacida,<sup>a,b\*</sup> Habiba Kechout,<sup>a</sup> Ratiba Belhouas,<sup>a</sup> Hocine Merazig<sup>a</sup> and Thierry Roisnel<sup>c</sup>

<sup>a</sup>Unité de Recherche de Chimie de l'Environnement et Moléculaire Structurale, CHEMS, Université Mentouri-Constantine, 25000 Algeria, <sup>b</sup>Département Sciences de la Matière, Faculté des Sciences Exactes et Sciences de la Nature et de la Vie, Université Larbi Ben M'hidi, Oum El Bouaghi 04000, Algeria, and <sup>c</sup>Centre de Diffractométrie X, UMR 6226 CNRS Unité Sciences Chimiques de Rennes, Université de Rennes I, 263 Avenue du Général Leclerc, 35042 Rennes, France

Correspondence e-mail: bouacida\_sofiane@yahoo.fr

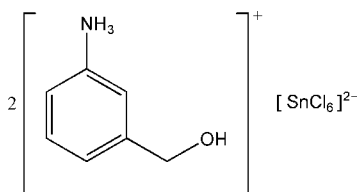
Received 18 February 2011; accepted 25 February 2011

 Key indicators: single-crystal X-ray study;  $T = 100$  K; mean  $\sigma(\text{C}-\text{C}) = 0.003$  Å;  $R$  factor = 0.025;  $wR$  factor = 0.058; data-to-parameter ratio = 19.5.

In the title compound,  $(\text{C}_7\text{H}_{10}\text{NO})_2[\text{SnCl}_6]$ , the  $\text{Sn}^{\text{IV}}$  atom, located on an inversion center, exists in an octahedral coordination environment. The crystal structure exhibits alternating organic and inorganic layers parallel to  $(\bar{1}01)$ . The cations and anions are linked *via* intermolecular  $\text{N}-\text{H}\cdots\text{O}$ ,  $\text{N}-\text{H}\cdots\text{Cl}$  and  $\text{O}-\text{H}\cdots\text{Cl}$  hydrogen bonds. Additional stabilization is provided by  $\pi-\pi$  stacking interactions between the benzene rings of the cations [centroid-centroid distances = 3.6962 (15) and 3.9340 (15) Å].

## Related literature

For related structures of similar monoprotonated amines or imines, see: Bouacida (2008); Bouacida *et al.* (2005*a,b,c*, 2009); Rademeyer (2004*a,b*). For a description of the Cambridge Structural Database, see: Allen (2002).



## Experimental

### Crystal data

$(\text{C}_7\text{H}_{10}\text{NO})_2[\text{SnCl}_6]$   
 $M_r = 579.73$   
 Monoclinic,  $P2_1/n$   
 $a = 7.4785$  (11) Å  
 $b = 11.2959$  (16) Å  
 $c = 12.6153$  (18) Å  
 $\beta = 105.989$  (5)°

$V = 1024.5$  (3) Å<sup>3</sup>  
 $Z = 2$   
 Mo  $K\alpha$  radiation  
 $\mu = 2.04$  mm<sup>-1</sup>  
 $T = 100$  K  
 $0.20 \times 0.18 \times 0.16$  mm

### Data collection

Bruker APEXII CCD diffractometer  
 Absorption correction: multi-scan (SADABS; Sheldrick, 1996)  
 $T_{\min} = 0.423$ ,  $T_{\max} = 0.693$   
 5915 measured reflections  
 2279 independent reflections  
 2027 reflections with  $I > 2\sigma(I)$   
 $R_{\text{int}} = 0.038$

### Refinement

$R[F^2 > 2\sigma(F^2)] = 0.025$   
 $wR(F^2) = 0.058$   
 $S = 1.07$   
 2279 reflections  
 117 parameters  
 H-atom parameters constrained  
 $\Delta\rho_{\text{max}} = 0.63$  e Å<sup>-3</sup>  
 $\Delta\rho_{\text{min}} = -1.27$  e Å<sup>-3</sup>

Table 1

Hydrogen-bond geometry (Å, °).

$D-H\cdots A$	$D-H$	$H\cdots A$	$D\cdots A$	$D-H\cdots A$
$\text{O1}-\text{H1}\cdots\text{Cl2}$	0.82	2.70	3.438 (2)	151
$\text{O1}-\text{H1}\cdots\text{Cl3}$	0.82	2.79	3.370 (2)	130
$\text{N1}-\text{H1A}\cdots\text{Cl3}^{\text{i}}$	0.89	2.64	3.298 (2)	131
$\text{N1}-\text{H1B}\cdots\text{O1}^{\text{ii}}$	0.89	1.83	2.721 (3)	175
$\text{N1}-\text{H1C}\cdots\text{Cl1}^{\text{iii}}$	0.89	2.71	3.338 (2)	128
$\text{N1}-\text{H1C}\cdots\text{Cl2}^{\text{iii}}$	0.89	2.57	3.304 (2)	140

Symmetry codes: (i)  $-x + 2, -y, -z + 1$ ; (ii)  $-x + \frac{1}{2}, y - \frac{1}{2}, -z + \frac{1}{2}$ ; (iii)  $-x + 1, -y, -z + 1$ .

Data collection: APEX2 (Bruker, 2007); cell refinement: SAINT (Bruker, 2007); data reduction: SAINT; program(s) used to solve structure: SIR2002 (Burla *et al.*, 2003); program(s) used to refine structure: SHELXL97 (Sheldrick, 2008); molecular graphics: ORTEP-3 (Farrugia, 1997) and DIAMOND (Brandenburg & Berndt, 1999); software used to prepare material for publication: WinGX (Farrugia, 1999).

This work was supported by the Unité de Recherche de Chimie de l'Environnement et Moléculaire Structurale, CHEMS, Université Mentouri-Constantine, Algeria.

Supplementary data and figures for this paper are available from the IUCr electronic archives (Reference: HY2408).

## References

- Allen, F. H. (2002). *Acta Cryst.* **B58**, 380–388.  
 Bouacida, S. (2008). PhD thesis, Mentouri-Constantine University, Algeria.  
 Bouacida, S., Belhouas, R., Kechout, H., Merazig, H. & Bénard-Rocherullé, P. (2009). *Acta Cryst.* **E65**, o628–o629.  
 Bouacida, S., Merazig, H., Beghidja, A. & Beghidja, C. (2005*a*). *Acta Cryst.* **E61**, m577–m579.  
 Bouacida, S., Merazig, H., Beghidja, A. & Beghidja, C. (2005*b*). *Acta Cryst.* **E61**, m1153–m1155.  
 Bouacida, S., Merazig, H., Beghidja, A. & Beghidja, C. (2005*c*). *Acta Cryst.* **E61**, m2072–m2074.  
 Brandenburg, K. & Berndt, M. (1999). *DIAMOND*. Crystal Impact GbR, Bonn, Germany.  
 Bruker (2007). APEX2 and SAINT. Bruker AXS Inc., Madison, Wisconsin, USA.  
 Burla, M. C., Camalli, M., Carrozzini, B., Cascarano, G. L., Giacovazzo, C., Polidori, G. & Spagna, R. (2003). *J. Appl. Cryst.* **36**, 1103.  
 Farrugia, L. J. (1997). *J. Appl. Cryst.* **30**, 565.  
 Farrugia, L. J. (1999). *J. Appl. Cryst.* **32**, 837–838.  
 Rademeyer, M. (2004*a*). *Acta Cryst.* **C60**, m55–m56.  
 Rademeyer, M. (2004*b*). *Acta Cryst.* **E60**, m345–m347.  
 Sheldrick, G. M. (1996). *SADABS*. University of Göttingen, Germany.  
 Sheldrick, G. M. (2008). *Acta Cryst.* **A64**, 112–122.

## supporting information

*Acta Cryst.* (2011). E67, m395 [doi:10.1107/S1600536811007252]

**Bis(3-hydroxymethylanilinium) hexachloridostannate(IV)**

**Sofiane Bouacida, Habiba Kechout, Ratiba Belhouas, Hocine Merazig and Thierry Roisnel**

**S1. Comment**

The title compound was prepared as part of our ongoing studies of hydrogen-bonding interactions in the crystal structures of protonated amines (Bouacida, 2008; Bouacida *et al.*, 2009).

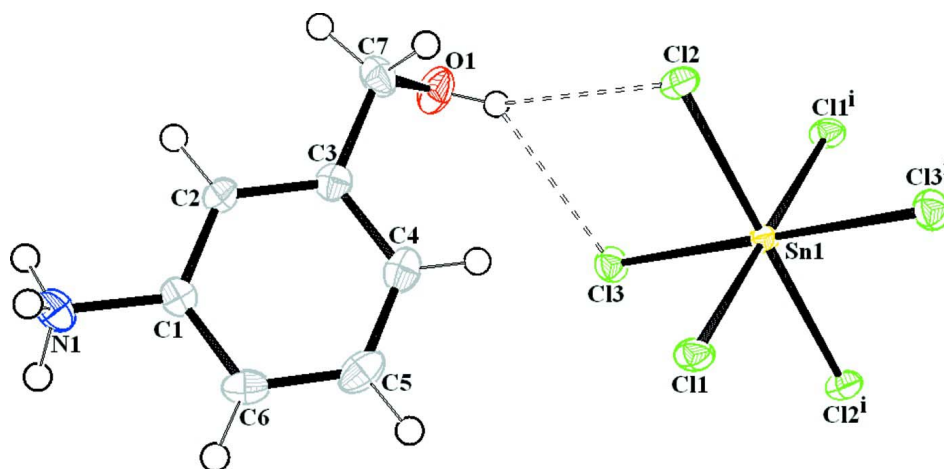
In the title compound (Fig. 1), all bond distances and angles are within the ranges of accepted values (CSD, Allen, 2002). The amino N atom is protonated as in the other amines and imines (Bouacida *et al.*, 2005a,b,c; Rademeyer, 2004a,b). The Sn<sup>IV</sup> atom is six-coordinated with six Cl atoms, located on an inversion center, forming a slightly distorted octahedral geometry. The crystal structure can be described as alternating layers of [SnCl<sub>6</sub>]<sup>2-</sup> complex anions and 3-hydroxymethylanilinium cations parallel to ( $\bar{1}$  0 1) (Fig. 2). In the crystal, the components of the structure are linked *via* intermolecular N—H $\cdots$ O, N—H $\cdots$ Cl and O—H $\cdots$ Cl hydrogen bonds (Table 1, Fig. 3). Additional stabilization is provided by  $\pi$ – $\pi$  stacking interactions (Table 2). These interactions link the cations and anions together, reinforcing the cohesion of the ionic structure.

**S2. Experimental**

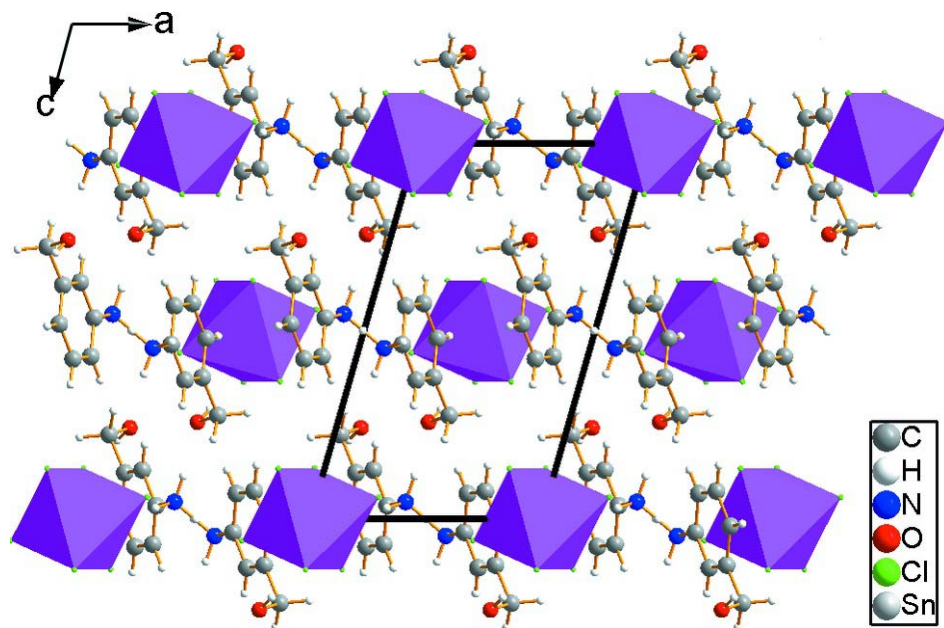
Crystals of the title compound were grown from an aqueous solution that was obtained by dissolving SnCl<sub>2</sub> (1 mmol) and 3-aminophenylmethanol (2 mmol) in hydrochloric acid. The solution was slowly evaporated to dryness for a couple of weeks. Some colorless crystals were carefully isolated under polarizing microscope for X-ray diffraction analysis.

**S3. Refinement**

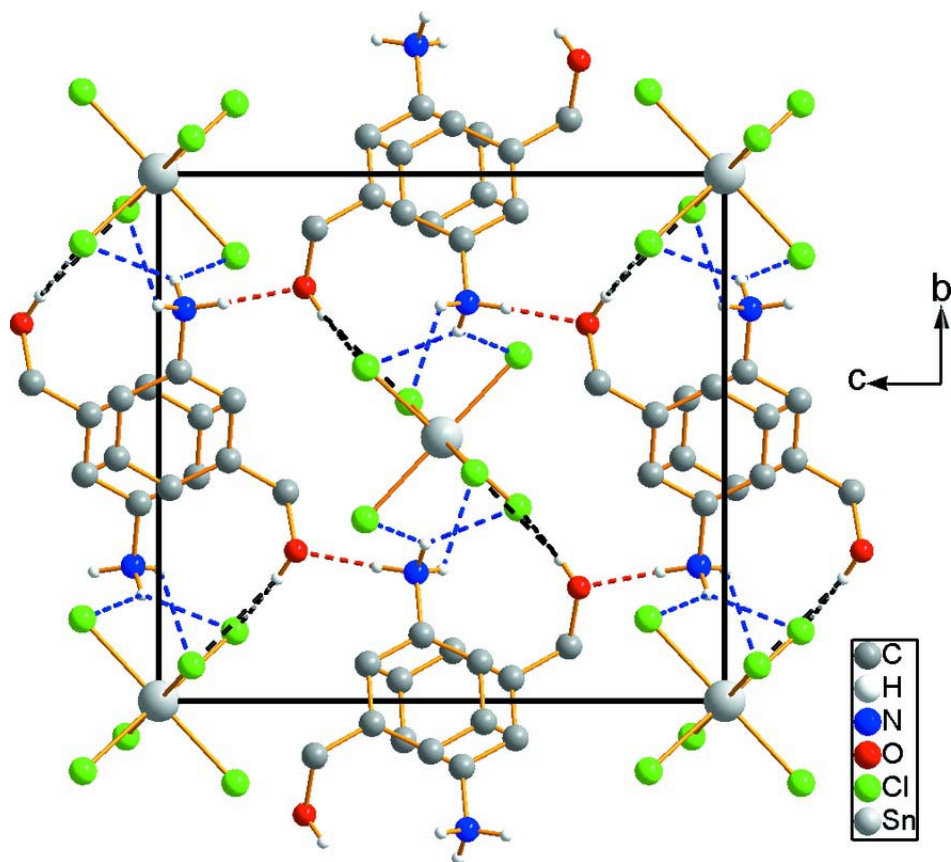
H atoms were located in difference Fourier maps but introduced in calculated positions and treated as riding on their parent atoms, with C—H = 0.93 and 0.97, N—H = 0.89, and O—H = 0.82 Å, and  $U_{\text{iso}}(\text{H}) = 1.2U_{\text{eq}}(\text{C})$  or  $1.5U_{\text{eq}}(\text{N}, \text{O})$ .

**Figure 1**

Molecular structure of the title compound. Displacement ellipsoids are drawn at the 50% probability level. Hydrogen bonds are shown as dashed lines. [Symmetry code: (i) 1-x, 1-y, 1-z.]

**Figure 2**

A diagram of the layered crystal packing in the title compound, viewed down the *b* axis, showing alternating layers of octahedral anions and cations.



**Figure 3**

Crystal packing of the title compound, viewed down the  $a$  axis, showing hydrogen bonds (dashed lines). H atoms not involved in hydrogen bonds have been omitted for clarity.

### Bis(3-hydroxymethylanilinium) hexachloridostannate(IV)

#### Crystal data

$(C_7H_{10}NO)_2[SnCl_6]$

$M_r = 579.73$

Monoclinic,  $P2_1/n$

$a = 7.4785$  (11) Å

$b = 11.2959$  (16) Å

$c = 12.6153$  (18) Å

$\beta = 105.989$  (5)°

$V = 1024.5$  (3) Å<sup>3</sup>

$Z = 2$

$F(000) = 572$

$D_x = 1.879$  Mg m<sup>-3</sup>

Mo  $K\alpha$  radiation,  $\lambda = 0.71073$  Å

Cell parameters from 3840 reflections

$\theta = 3.4$ – $27.4$ °

$\mu = 2.04$  mm<sup>-1</sup>

$T = 100$  K

Block, colorless

$0.20 \times 0.18 \times 0.16$  mm

#### Data collection

Bruker APEXII CCD  
diffractometer

Graphite monochromator

$\varphi$  and  $\omega$  scans

Absorption correction: multi-scan  
(*SADABS*; Sheldrick, 1996)

$T_{\min} = 0.423$ ,  $T_{\max} = 0.693$

5915 measured reflections

2279 independent reflections

2027 reflections with  $I > 2\sigma(I)$

$R_{\text{int}} = 0.038$

$\theta_{\max} = 27.5$ °,  $\theta_{\min} = 2.5$ °

$h = -9 \rightarrow 5$

$k = -10 \rightarrow 14$

$l = -14 \rightarrow 16$

Refinement

Refinement on  $F^2$   
 Least-squares matrix: full  
 $R[F^2 > 2\sigma(F^2)] = 0.025$   
 $wR(F^2) = 0.058$   
 $S = 1.07$   
 2279 reflections  
 117 parameters  
 0 restraints  
 Primary atom site location: structure-invariant  
 direct methods

Secondary atom site location: difference Fourier  
 map  
 Hydrogen site location: inferred from  
 neighbouring sites  
 H-atom parameters constrained  
 $w = 1/[\sigma^2(F_o^2) + (0.0194P)^2 + 0.1921P]$   
 where  $P = (F_o^2 + 2F_c^2)/3$   
 $(\Delta/\sigma)_{\max} = 0.001$   
 $\Delta\rho_{\max} = 0.63 \text{ e } \text{\AA}^{-3}$   
 $\Delta\rho_{\min} = -1.27 \text{ e } \text{\AA}^{-3}$

Fractional atomic coordinates and isotropic or equivalent isotropic displacement parameters ( $\text{\AA}^2$ )

	x	y	z	$U_{\text{iso}}^*/U_{\text{eq}}$
C1	0.8165 (3)	-0.12498 (19)	0.46444 (19)	0.0181 (5)
C2	0.7132 (3)	-0.06992 (19)	0.36967 (18)	0.0170 (5)
H2	0.6918	-0.1075	0.3017	0.02*
C3	0.6412 (3)	0.0428 (2)	0.37701 (19)	0.0186 (5)
C4	0.6736 (4)	0.0954 (2)	0.48072 (19)	0.0216 (5)
H4	0.6246	0.17	0.4867	0.026*
C5	0.7765 (4)	0.0391 (2)	0.5742 (2)	0.0249 (6)
H5	0.7973	0.0761	0.6424	0.03*
C6	0.8502 (3)	-0.0738 (2)	0.56723 (19)	0.0207 (5)
H6	0.9197	-0.1128	0.63	0.025*
C7	0.5266 (4)	0.1037 (2)	0.2755 (2)	0.0228 (5)
H7A	0.5162	0.0529	0.2121	0.027*
H7B	0.4023	0.1172	0.2826	0.027*
N1	0.8919 (3)	-0.24370 (17)	0.45477 (16)	0.0219 (4)
H1A	1.005	-0.2499	0.5014	0.033*
H1B	0.8986	-0.2547	0.3861	0.033*
H1C	0.8176	-0.2982	0.471	0.033*
O1	0.6072 (3)	0.21527 (14)	0.25759 (14)	0.0284 (4)
H1	0.5691	0.2678	0.2907	0.043*
Cl1	0.54335 (8)	0.34435 (5)	0.63534 (4)	0.01892 (13)
Cl2	0.29979 (8)	0.36720 (5)	0.36576 (4)	0.01874 (14)
Cl3	0.76854 (9)	0.43264 (5)	0.44207 (5)	0.02107 (14)
Sn1	0.5	0.5	0.5	0.01371 (8)

Atomic displacement parameters ( $\text{\AA}^2$ )

	$U^{11}$	$U^{22}$	$U^{33}$	$U^{12}$	$U^{13}$	$U^{23}$
C1	0.0175 (13)	0.0183 (11)	0.0200 (12)	0.0004 (10)	0.0073 (10)	0.0020 (9)
C2	0.0181 (13)	0.0167 (11)	0.0162 (11)	-0.0023 (10)	0.0049 (10)	-0.0015 (9)
C3	0.0171 (13)	0.0174 (11)	0.0218 (12)	-0.0041 (10)	0.0062 (10)	-0.0006 (10)
C4	0.0213 (13)	0.0194 (11)	0.0268 (13)	-0.0046 (11)	0.0112 (11)	-0.0042 (10)
C5	0.0268 (15)	0.0302 (13)	0.0207 (13)	-0.0091 (12)	0.0118 (11)	-0.0071 (11)
C6	0.0189 (13)	0.0266 (12)	0.0159 (12)	-0.0060 (11)	0.0037 (10)	0.0033 (10)
C7	0.0195 (14)	0.0179 (11)	0.0298 (14)	0.0007 (10)	0.0047 (11)	0.0037 (10)

N1	0.0216 (12)	0.0213 (10)	0.0240 (11)	0.0028 (9)	0.0083 (9)	0.0064 (8)
O1	0.0455 (13)	0.0152 (8)	0.0273 (10)	-0.0035 (9)	0.0144 (9)	-0.0013 (7)
Cl1	0.0239 (3)	0.0162 (3)	0.0145 (3)	-0.0011 (2)	0.0017 (2)	0.0028 (2)
Cl2	0.0234 (3)	0.0171 (3)	0.0138 (3)	-0.0036 (2)	0.0019 (2)	-0.0007 (2)
Cl3	0.0195 (3)	0.0229 (3)	0.0219 (3)	0.0023 (2)	0.0074 (2)	0.0003 (2)
Sn1	0.01617 (13)	0.01257 (12)	0.01161 (13)	0.00006 (8)	0.00251 (9)	-0.00002 (8)

*Geometric parameters (Å, °)*

C1—C6	1.378 (3)	C6—H6	0.93
C1—C2	1.380 (3)	C7—O1	1.441 (3)
C1—N1	1.473 (3)	C7—H7A	0.97
C2—C3	1.396 (3)	C7—H7B	0.97
C2—H2	0.93	N1—H1A	0.89
C3—C4	1.396 (3)	N1—H1B	0.89
C3—C7	1.498 (3)	N1—H1C	0.89
C4—C5	1.374 (4)	O1—H1	0.82
C4—H4	0.93	Sn1—Cl1	2.4097 (6)
C5—C6	1.401 (3)	Sn1—Cl2	2.4419 (6)
C5—H5	0.93	Sn1—Cl3	2.4402 (6)
C6—C1—C2	122.7 (2)	H7A—C7—H7B	107.9
C6—C1—N1	119.0 (2)	C1—N1—H1A	109.5
C2—C1—N1	118.3 (2)	C1—N1—H1B	109.5
C1—C2—C3	119.2 (2)	H1A—N1—H1B	109.5
C1—C2—H2	120.4	C1—N1—H1C	109.5
C3—C2—H2	120.4	H1A—N1—H1C	109.5
C4—C3—C2	118.7 (2)	H1B—N1—H1C	109.5
C4—C3—C7	121.1 (2)	C7—O1—H1	109.5
C2—C3—C7	120.2 (2)	Cl1—Sn1—Cl1 <sup>i</sup>	180
C5—C4—C3	121.3 (2)	Cl1—Sn1—Cl3 <sup>i</sup>	88.65 (2)
C5—C4—H4	119.4	Cl1 <sup>i</sup> —Sn1—Cl3 <sup>i</sup>	91.35 (2)
C3—C4—H4	119.4	Cl1—Sn1—Cl3	91.35 (2)
C4—C5—C6	120.3 (2)	Cl1 <sup>i</sup> —Sn1—Cl3	88.65 (2)
C4—C5—H5	119.8	Cl3 <sup>i</sup> —Sn1—Cl3	180
C6—C5—H5	119.8	Cl1—Sn1—Cl2 <sup>i</sup>	91.13 (2)
C1—C6—C5	117.9 (2)	Cl1 <sup>i</sup> —Sn1—Cl2 <sup>i</sup>	88.87 (2)
C1—C6—H6	121.1	Cl3 <sup>i</sup> —Sn1—Cl2 <sup>i</sup>	89.93 (2)
C5—C6—H6	121.1	Cl3—Sn1—Cl2 <sup>i</sup>	90.07 (2)
O1—C7—C3	111.7 (2)	Cl1—Sn1—Cl2	88.87 (2)
O1—C7—H7A	109.3	Cl1 <sup>i</sup> —Sn1—Cl2	91.13 (2)
C3—C7—H7A	109.3	Cl3 <sup>i</sup> —Sn1—Cl2	90.07 (2)
O1—C7—H7B	109.3	Cl3—Sn1—Cl2	89.93 (2)
C3—C7—H7B	109.3	Cl2 <sup>i</sup> —Sn1—Cl2	180.000 (19)
C6—C1—C2—C3	0.8 (4)	C3—C4—C5—C6	-0.6 (4)
N1—C1—C2—C3	-179.7 (2)	C2—C1—C6—C5	-0.4 (4)
C1—C2—C3—C4	-1.1 (3)	N1—C1—C6—C5	-179.8 (2)

C1—C2—C3—C7	-179.2 (2)	C4—C5—C6—C1	0.2 (4)
C2—C3—C4—C5	1.0 (4)	C4—C3—C7—O1	60.8 (3)
C7—C3—C4—C5	179.1 (2)	C2—C3—C7—O1	-121.2 (2)

Symmetry code: (i)  $-x+1, -y+1, -z+1$ .

*Hydrogen-bond geometry (Å, °)*

<i>D</i> —H... <i>A</i>	<i>D</i> —H	H... <i>A</i>	<i>D</i> ... <i>A</i>	<i>D</i> —H... <i>A</i>
O1—H1...C12	0.82	2.70	3.438 (2)	151
O1—H1...C13	0.82	2.79	3.370 (2)	130
N1—H1 <i>A</i> ...C13 <sup>ii</sup>	0.89	2.64	3.298 (2)	131
N1—H1 <i>B</i> ...O1 <sup>iii</sup>	0.89	1.83	2.721 (3)	175
N1—H1 <i>C</i> ...C11 <sup>iv</sup>	0.89	2.71	3.338 (2)	128
N1—H1 <i>C</i> ...C12 <sup>iv</sup>	0.89	2.57	3.304 (2)	140

Symmetry codes: (ii)  $-x+2, -y, -z+1$ ; (iii)  $-x+3/2, y-1/2, -z+1/2$ ; (iv)  $-x+1, -y, -z+1$ .