

Acta Crystallographica Section E

Structure Reports

Online

ISSN 1600-5368

Ethyl 1-formamido-4-oxo-2,6-diphenyl-cyclohexanecarboxylate

 Dawei Zhang,^{a,b} Xianxiu Xu^{b*} and Qun Liu^b
^aDepartment of Chemistry, Yanbian University, Yanji 133002, People's Republic of China, and ^bDepartment of Chemistry, Northeast Normal University, Changchun 130024, People's Republic of China

Correspondence e-mail: xuxx677@nenu.edu.cn

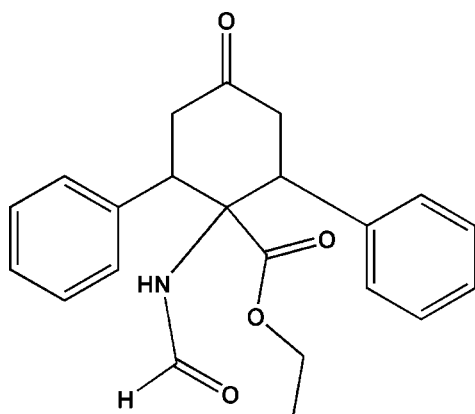
Received 21 December 2010; accepted 7 January 2011

 Key indicators: single-crystal X-ray study; $T = 293$ K; mean $\sigma(\text{C}-\text{C}) = 0.002$ Å; R factor = 0.042; wR factor = 0.116; data-to-parameter ratio = 18.2.

In the title compound, $\text{C}_{22}\text{H}_{23}\text{NO}_4$, the central six-membered ring is in a twist-boat conformation, the two aryl groups are in equatorial positions and the dihedral angle between the two aromatic rings is $75.98(12)^\circ$.

Related literature

For the synthesis, see: Tan *et al.* (2009); Zhang *et al.* (2010). For related structures, see: Rowland & Gill (1988); Rowland *et al.* (1998); Aleman *et al.* (2009). Cyclic constrained analogues of phenylalanine (Phe) are of particular interest in the construction of peptide analogues with controlled folds in the backbone because they play an important role in both restricting the χ_1 torsion angle and in peptide receptor recognition processes, see: Cativiela & Díaz-de-Villegas (1998, 2000, 2007); Cativiela & Ordóñez (2009); Lasa & Cativiela (2006).



Experimental

Crystal data

$\text{C}_{22}\text{H}_{23}\text{NO}_4$	$V = 1901.2(4) \text{ \AA}^3$
$M_r = 365.41$	$Z = 4$
Monoclinic, $P2_1/n$	Mo $K\alpha$ radiation
$a = 11.3240(12) \text{ \AA}$	$\mu = 0.09 \text{ mm}^{-1}$
$b = 13.5100(15) \text{ \AA}$	$T = 293 \text{ K}$
$c = 12.5870(14) \text{ \AA}$	$0.21 \times 0.16 \times 0.14 \text{ mm}$
$\beta = 99.149(2)^\circ$	

Data collection

Bruker SMART APEXII CCD area-detector diffractometer	11361 measured reflections
Absorption correction: multi-scan (SADABS; Sheldrick, 1996)	4439 independent reflections
$T_{\min} = 0.982$, $T_{\max} = 0.988$	3120 reflections with $I > 2\sigma(I)$
	$R_{\text{int}} = 0.021$

Refinement

$R[F^2 > 2\sigma(F^2)] = 0.042$	244 parameters
$wR(F^2) = 0.116$	H-atom parameters constrained
$S = 1.02$	$\Delta\rho_{\text{max}} = 0.22 \text{ e \AA}^{-3}$
4439 reflections	$\Delta\rho_{\text{min}} = -0.19 \text{ e \AA}^{-3}$

Data collection: APEX2 (Bruker, 2007); cell refinement: SAINT (Bruker, 2007); data reduction: SAINT; program(s) used to solve structure: SHELXS97 (Sheldrick, 2008); program(s) used to refine structure: SHELXL97 (Sheldrick, 2008); molecular graphics: SHELXTL (Sheldrick, 2008); software used to prepare material for publication: SHELXTL.

Financial support of this research by the NNSFC (20872015), the Science Foundation for Young Teachers of NENU (20090404) and the Young Scientific Research Foundation of Jilin Province (20090149) is gratefully acknowledged.

Supplementary data and figures for this paper are available from the IUCr electronic archives (Reference: NC2214).

References

- Aleman, C., Jiménez, A. I., Cativiela, C., Nussinov, R. & Casanovas, J. (2009). *J. Org. Chem.* **74**, 7834–7843.
- Bruker (2007). APEX2 and SAINT. Bruker AXS Inc., Madison, Wisconsin, USA.
- Cativiela, C. & Díaz-de-Villegas, M. D. (1998). *Tetrahedron Asymmetry*, **9**, 3517–3599.
- Cativiela, C. & Díaz-de-Villegas, M. D. (2000). *Tetrahedron Asymmetry*, **11**, 645–732.
- Cativiela, C. & Díaz-de-Villegas, M. D. (2007). *Tetrahedron Asymmetry*, **18**, 569–623.
- Cativiela, C. & Ordóñez, M. (2009). *Tetrahedron Asymmetry*, **20**, 1–63.
- Lasa, M. & Cativiela, C. (2006). *Synlett*, pp. 2517–2533.
- Rowland, A. T., Filla, S. A., Coutlangus, M. L., Winemiller, M. D., Chamberlin, M. J., Czulada, G. & Johnson, S. D. (1998). *J. Org. Chem.* **63**, 4359–4365.
- Rowland, A. T. & Gill, B. C. (1988). *J. Org. Chem.* **53**, 434–437.
- Sheldrick, G. M. (1996). SADABS. University of Göttingen, Germany.
- Sheldrick, G. M. (2008). *Acta Cryst.* **A64**, 112–122.
- Tan, J., Xu, X., Zhang, L., Li, Y. & Liu, Q. (2009). *Angew. Chem. Int. Ed.* **48**, 2868–2872.
- Zhang, D. W., Xu, X. X. & Liu, Q. (2010). *Synlett*, **6**, 917–920.

supporting information

Acta Cryst. (2011). E67, o401 [doi:10.1107/S1600536811000985]

Ethyl 1-formamido-4-oxo-2,6-diphenylcyclohexanecarboxylate

Dawei Zhang, Xianxiu Xu and Qun Liu

S1. Comment

The cyclic constrained analogues of phenylalanine (Phe) are of particular interest in the construction of peptide analogues with controlled fold in the backbone, because they play an important role in both restricting torsional angle χ_1 and peptide receptor recognition processes (Cativiela *et al.* 1998; Cativiela *et al.* 2000. Cativiela *et al.* 2007; Cativiela *et al.* 2009; Lasa *et al.* 2006). The crystal structure of title compound, a phenyl substituted highly constrained cyclohexane analogue of Phe, is reported in this paper.

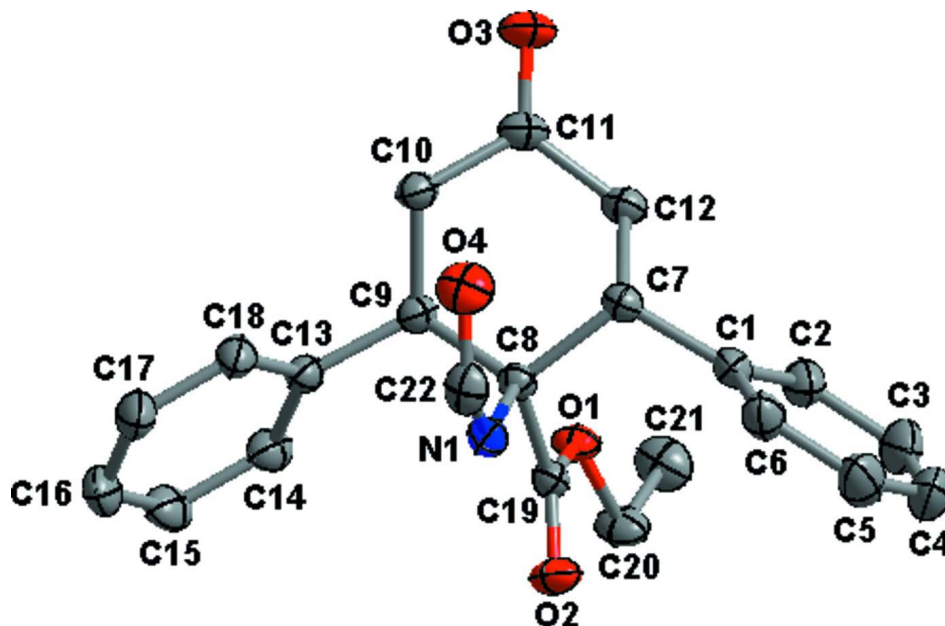
In the crystal structure the central six-membered ring is in a twist conformation which can presumably traced back due to steric hindrance of the ethoxyl carbonyl, the amide and the two aryl groups (Fig. 1). The two aryl groups are located in equatorial positions and the dihedral angle between two aromatic rings amount to 75.98 (12)°.

S2. Experimental

To a mixture of **(1E,4E)-1,5-bis(4-chlorophenyl)penta-1,4-dien-3-one** (303 mg, 1.0 mmol) and ethyl isocyanoacetate (0.132 ml, 1.2 mmol) in DMF (5 ml) was added 1,8-diazabicyclo [5.4.0]undec-7-ene (DBU) (0.015 ml, 0.1 mmol) in one portion at room temperature. The reaction mixture was stirred at room temperature, and the reaction mixture was monitored by TLC. After the substrate **(1E,4E)-1,5-bis(4-chlorophenyl)penta-1,4-dien-3-one** was consumed, the resulting mixture was poured into ice-water (30 ml) under stirring. The precipitate was filtered off, washed with water (3 × 10 ml), and dried *in vacuo* to afford the crude product ethyl 2,6-bis(4-chlorophenyl)-1-isocyano-4-oxocyclohexanecarboxylate, which was purified by flash chromatography (silica gel, petroleum ether: diethyl ether = 3: 1, V/V) to give ethyl 2,6-bis(4-chlorophenyl)-1-isocyano-4-oxocyclohexanecarboxylate (387 mg, 93%). Colorless single crystals of the title compound were obtained by slow evaporation of the solvent from an ethanol solution at room temperature.

S3. Refinement

The N-bound H atom was located in a difference map, fixed at this position and refined as riding with $U_{\text{iso}}(\text{H}) = 1.2U_{\text{eq}}(\text{N})$. The remaining hydrogen atoms were placed in ideal positions (C—H = 0.93–0.98 Å) and refined as riding with $U_{\text{iso}}(\text{H}) = 1.2U_{\text{eq}}(\text{C})$ or $1.5U_{\text{eq}}(\text{methyl C})$. The methyl groups were allowed to rotate, but not to tip.

**Figure 1**

View of the molecular structure of the title compound with labeling and displacement ellipsoids drawn at the 30% probability level.

Ethyl 1-formamido-4-oxo-2,6-diphenylcyclohexanecarboxylate

Crystal data

$C_{22}H_{23}NO_4$

$M_r = 365.41$

Monoclinic, $P2_1/n$

$a = 11.3240$ (12) Å

$b = 13.5100$ (15) Å

$c = 12.5870$ (14) Å

$\beta = 99.149$ (2)°

$V = 1901.2$ (4) Å³

$Z = 4$

$F(000) = 776$

$D_x = 1.277$ Mg m⁻³

Mo $K\alpha$ radiation, $\lambda = 0.71069$ Å

Cell parameters from 132 reflections

$\theta = 1.3$ – 26.0 °

$\mu = 0.09$ mm⁻¹

$T = 293$ K

Block, colorless

$0.21 \times 0.16 \times 0.14$ mm

Data collection

Bruker SMART APEXII CCD area-detector diffractometer

Radiation source: fine-focus sealed tube

Graphite monochromator

ω scans

Absorption correction: multi-scan

(*SADABS*; Sheldrick, 1996)

$T_{\min} = 0.982$, $T_{\max} = 0.988$

11361 measured reflections

4439 independent reflections

3120 reflections with $I > 2\sigma(I)$

$R_{\text{int}} = 0.021$

$\theta_{\max} = 28.3$ °, $\theta_{\min} = 2.2$ °

$h = -15 \rightarrow 14$

$k = -16 \rightarrow 17$

$l = -14 \rightarrow 16$

Refinement

Refinement on F^2

Least-squares matrix: full

$R[F^2 > 2\sigma(F^2)] = 0.042$

$wR(F^2) = 0.116$

$S = 1.02$

4439 reflections

244 parameters

0 restraints

Primary atom site location: structure-invariant direct methods

Secondary atom site location: difference Fourier map
 Hydrogen site location: inferred from neighbouring sites
 H-atom parameters constrained

$$w = 1/[\sigma^2(F_o^2) + (0.0534P)^2 + 0.306P]$$

where $P = (F_o^2 + 2F_c^2)/3$
 $(\Delta/\sigma)_{\max} < 0.001$
 $\Delta\rho_{\max} = 0.22 \text{ e } \text{Å}^{-3}$
 $\Delta\rho_{\min} = -0.19 \text{ e } \text{Å}^{-3}$

Special details

Geometry. All e.s.d.'s (except the e.s.d. in the dihedral angle between two l.s. planes) are estimated using the full covariance matrix. The cell e.s.d.'s are taken into account individually in the estimation of e.s.d.'s in distances, angles and torsion angles; correlations between e.s.d.'s in cell parameters are only used when they are defined by crystal symmetry. An approximate (isotropic) treatment of cell e.s.d.'s is used for estimating e.s.d.'s involving l.s. planes.

Refinement. Refinement of F^2 against ALL reflections. The weighted R -factor wR and goodness of fit S are based on F^2 , conventional R -factors R are based on F , with F set to zero for negative F^2 . The threshold expression of $F^2 > \sigma(F^2)$ is used only for calculating R -factors(gt) *etc.* and is not relevant to the choice of reflections for refinement. R -factors based on F^2 are statistically about twice as large as those based on F , and R -factors based on ALL data will be even larger.

Fractional atomic coordinates and isotropic or equivalent isotropic displacement parameters (Å²)

	<i>x</i>	<i>y</i>	<i>z</i>	$U_{\text{iso}}^*/U_{\text{eq}}$
O2	1.03050 (10)	0.14890 (8)	0.47576 (8)	0.0541 (3)
O1	0.94334 (8)	0.26361 (7)	0.36180 (7)	0.0426 (2)
C19	0.98394 (11)	0.17327 (10)	0.38744 (10)	0.0364 (3)
N1	1.01302 (10)	0.00919 (8)	0.33120 (9)	0.0401 (3)
C8	0.95919 (11)	0.10312 (9)	0.29070 (10)	0.0339 (3)
C1	0.75462 (12)	0.08726 (11)	0.35380 (11)	0.0416 (3)
O4	0.95020 (11)	-0.09967 (8)	0.19437 (10)	0.0637 (3)
O3	0.76178 (11)	0.15572 (10)	-0.01954 (9)	0.0699 (4)
C7	0.81977 (11)	0.09052 (10)	0.25754 (10)	0.0366 (3)
H7	0.8083	0.0251	0.2239	0.044*
C10	0.94777 (13)	0.11160 (11)	0.08583 (11)	0.0443 (3)
H10A	0.9870	0.1368	0.0283	0.053*
H10B	0.9497	0.0399	0.0832	0.053*
C13	1.14993 (12)	0.13184 (11)	0.20876 (11)	0.0408 (3)
C9	1.01555 (12)	0.14705 (10)	0.19429 (10)	0.0378 (3)
H9	1.0031	0.2188	0.1961	0.045*
C12	0.76820 (13)	0.16456 (11)	0.17030 (11)	0.0448 (3)
H12A	0.6819	0.1579	0.1554	0.054*
H12B	0.7870	0.2315	0.1955	0.054*
C20	0.94851 (15)	0.33379 (11)	0.45037 (13)	0.0534 (4)
H20A	1.0308	0.3516	0.4773	0.064*
H20B	0.9137	0.3050	0.5088	0.064*
C11	0.81977 (13)	0.14617 (11)	0.06898 (11)	0.0456 (3)
C18	1.20075 (13)	0.04802 (12)	0.17129 (12)	0.0510 (4)
H18	1.1518	0.0000	0.1342	0.061*
C14	1.22578 (14)	0.20301 (12)	0.26263 (12)	0.0496 (4)
H14	1.1936	0.2601	0.2878	0.060*
C2	0.70022 (14)	0.16996 (13)	0.38990 (13)	0.0550 (4)
H2	0.7006	0.2295	0.3528	0.066*
C6	0.74950 (14)	-0.00068 (14)	0.40968 (14)	0.0563 (4)

H6	0.7837	-0.0576	0.3861	0.068*
C22	1.00363 (14)	-0.07956 (11)	0.28331 (14)	0.0500 (4)
H22	1.0424	-0.1318	0.3225	0.060*
C15	1.34882 (15)	0.18981 (14)	0.27916 (14)	0.0610 (5)
H15	1.3985	0.2380	0.3152	0.073*
C17	1.32359 (15)	0.03502 (15)	0.18842 (14)	0.0621 (5)
H17	1.3564	-0.0218	0.1633	0.075*
C16	1.39736 (15)	0.10596 (16)	0.24257 (14)	0.0648 (5)
H16	1.4798	0.0970	0.2542	0.078*
C3	0.64542 (17)	0.16480 (18)	0.48052 (17)	0.0773 (6)
H3	0.6105	0.2212	0.5044	0.093*
C5	0.69387 (18)	-0.00491 (19)	0.50051 (17)	0.0799 (6)
H5	0.6919	-0.0642	0.5378	0.096*
C21	0.87950 (17)	0.42237 (12)	0.40695 (16)	0.0659 (5)
H21A	0.8803	0.4706	0.4631	0.099*
H21B	0.7984	0.4036	0.3803	0.099*
H21C	0.9151	0.4502	0.3494	0.099*
C4	0.64203 (19)	0.0781 (2)	0.53508 (17)	0.0882 (7)
H4	0.6046	0.0753	0.5957	0.106*
H1N	1.0524	0.0128	0.3939	0.106*

Atomic displacement parameters (Å²)

	U^{11}	U^{22}	U^{33}	U^{12}	U^{13}	U^{23}
O2	0.0651 (7)	0.0600 (7)	0.0331 (5)	0.0161 (5)	-0.0045 (5)	-0.0018 (5)
O1	0.0489 (6)	0.0382 (5)	0.0375 (5)	0.0043 (4)	-0.0026 (4)	-0.0064 (4)
C19	0.0337 (6)	0.0409 (7)	0.0339 (7)	0.0032 (5)	0.0027 (5)	-0.0003 (5)
N1	0.0411 (6)	0.0377 (6)	0.0415 (6)	0.0070 (5)	0.0065 (5)	0.0038 (5)
C8	0.0345 (6)	0.0335 (6)	0.0333 (7)	0.0026 (5)	0.0039 (5)	0.0012 (5)
C1	0.0298 (6)	0.0528 (8)	0.0411 (8)	0.0000 (6)	0.0021 (5)	0.0003 (6)
O4	0.0742 (8)	0.0462 (6)	0.0687 (8)	0.0036 (5)	0.0055 (6)	-0.0131 (6)
O3	0.0697 (8)	0.0954 (9)	0.0387 (6)	0.0093 (7)	-0.0093 (5)	0.0077 (6)
C7	0.0346 (7)	0.0372 (7)	0.0367 (7)	-0.0003 (5)	0.0015 (5)	-0.0011 (5)
C10	0.0484 (8)	0.0517 (8)	0.0321 (7)	-0.0063 (6)	0.0044 (6)	-0.0016 (6)
C13	0.0413 (7)	0.0501 (8)	0.0318 (7)	-0.0082 (6)	0.0078 (5)	0.0002 (6)
C9	0.0419 (7)	0.0388 (7)	0.0323 (7)	-0.0032 (6)	0.0052 (5)	-0.0006 (5)
C12	0.0406 (7)	0.0484 (8)	0.0424 (8)	0.0039 (6)	-0.0030 (6)	0.0016 (6)
C20	0.0587 (9)	0.0488 (9)	0.0482 (9)	0.0065 (7)	-0.0051 (7)	-0.0169 (7)
C11	0.0518 (8)	0.0444 (8)	0.0374 (8)	-0.0036 (6)	-0.0032 (6)	0.0040 (6)
C18	0.0436 (8)	0.0646 (10)	0.0463 (8)	-0.0092 (7)	0.0120 (7)	-0.0124 (7)
C14	0.0524 (9)	0.0514 (9)	0.0445 (8)	-0.0142 (7)	0.0065 (7)	-0.0011 (7)
C2	0.0445 (8)	0.0649 (10)	0.0566 (10)	0.0045 (7)	0.0109 (7)	-0.0073 (8)
C6	0.0443 (8)	0.0663 (10)	0.0599 (10)	0.0038 (7)	0.0127 (7)	0.0158 (8)
C22	0.0538 (9)	0.0384 (8)	0.0602 (10)	0.0095 (6)	0.0166 (8)	0.0050 (7)
C15	0.0517 (9)	0.0753 (12)	0.0542 (10)	-0.0266 (9)	0.0026 (8)	0.0007 (9)
C17	0.0460 (9)	0.0851 (13)	0.0588 (10)	-0.0002 (8)	0.0195 (8)	-0.0123 (9)
C16	0.0389 (8)	0.0963 (14)	0.0615 (11)	-0.0126 (9)	0.0150 (8)	-0.0043 (10)
C3	0.0604 (11)	0.1077 (17)	0.0673 (12)	0.0159 (11)	0.0212 (9)	-0.0169 (12)

C5	0.0580 (11)	0.1129 (17)	0.0710 (13)	0.0032 (11)	0.0172 (10)	0.0370 (12)
C21	0.0682 (11)	0.0490 (10)	0.0774 (12)	0.0083 (8)	0.0022 (9)	-0.0117 (8)
C4	0.0616 (12)	0.148 (2)	0.0601 (12)	0.0153 (13)	0.0267 (10)	0.0114 (14)

Geometric parameters (Å, °)

O2—C19	1.1983 (15)	C12—H12B	0.9700
O1—C19	1.3258 (16)	C20—C21	1.485 (2)
O1—C20	1.4575 (16)	C20—H20A	0.9700
C19—C8	1.5333 (18)	C20—H20B	0.9700
N1—C22	1.3386 (19)	C18—C17	1.384 (2)
N1—C8	1.4639 (16)	C18—H18	0.9300
N1—H1N	0.8440	C14—C15	1.387 (2)
C8—C9	1.5744 (18)	C14—H14	0.9300
C8—C7	1.5768 (17)	C2—C3	1.384 (3)
C1—C6	1.387 (2)	C2—H2	0.9300
C1—C2	1.387 (2)	C6—C5	1.391 (3)
C1—C7	1.5161 (19)	C6—H6	0.9300
O4—C22	1.2157 (19)	C22—H22	0.9300
O3—C11	1.2070 (17)	C15—C16	1.370 (3)
C7—C12	1.5308 (18)	C15—H15	0.9300
C7—H7	0.9800	C17—C16	1.378 (2)
C10—C11	1.505 (2)	C17—H17	0.9300
C10—C9	1.5326 (18)	C16—H16	0.9300
C10—H10A	0.9700	C3—C4	1.361 (3)
C10—H10B	0.9700	C3—H3	0.9300
C13—C18	1.386 (2)	C5—C4	1.369 (3)
C13—C14	1.392 (2)	C5—H5	0.9300
C13—C9	1.5176 (19)	C21—H21A	0.9600
C9—H9	0.9800	C21—H21B	0.9600
C12—C11	1.505 (2)	C21—H21C	0.9600
C12—H12A	0.9700	C4—H4	0.9300
C19—O1—C20	116.26 (10)	O1—C20—H20B	110.4
O2—C19—O1	124.27 (12)	C21—C20—H20B	110.4
O2—C19—C8	124.39 (12)	H20A—C20—H20B	108.6
O1—C19—C8	111.30 (10)	O3—C11—C12	122.48 (14)
C22—N1—C8	128.38 (12)	O3—C11—C10	122.25 (14)
C22—N1—H1N	117.8	C12—C11—C10	115.24 (12)
C8—N1—H1N	113.8	C17—C18—C13	120.78 (15)
N1—C8—C19	104.24 (10)	C17—C18—H18	119.6
N1—C8—C9	113.44 (11)	C13—C18—H18	119.6
C19—C8—C9	109.50 (10)	C15—C14—C13	120.78 (16)
N1—C8—C7	110.03 (10)	C15—C14—H14	119.6
C19—C8—C7	109.02 (10)	C13—C14—H14	119.6
C9—C8—C7	110.37 (10)	C3—C2—C1	120.67 (18)
C6—C1—C2	117.88 (15)	C3—C2—H2	119.7
C6—C1—C7	119.68 (13)	C1—C2—H2	119.7

C2—C1—C7	122.44 (13)	C1—C6—C5	120.85 (18)
C1—C7—C12	114.43 (11)	C1—C6—H6	119.6
C1—C7—C8	112.68 (10)	C5—C6—H6	119.6
C12—C7—C8	111.78 (11)	O4—C22—N1	127.38 (14)
C1—C7—H7	105.7	O4—C22—H22	116.3
C12—C7—H7	105.7	N1—C22—H22	116.3
C8—C7—H7	105.7	C16—C15—C14	120.19 (15)
C11—C10—C9	111.29 (12)	C16—C15—H15	119.9
C11—C10—H10A	109.4	C14—C15—H15	119.9
C9—C10—H10A	109.4	C16—C17—C18	120.25 (17)
C11—C10—H10B	109.4	C16—C17—H17	119.9
C9—C10—H10B	109.4	C18—C17—H17	119.9
H10A—C10—H10B	108.0	C15—C16—C17	119.80 (16)
C18—C13—C14	118.20 (14)	C15—C16—H16	120.1
C18—C13—C9	122.16 (12)	C17—C16—H16	120.1
C14—C13—C9	119.63 (13)	C4—C3—C2	120.76 (19)
C13—C9—C10	114.53 (11)	C4—C3—H3	119.6
C13—C9—C8	112.22 (11)	C2—C3—H3	119.6
C10—C9—C8	111.21 (11)	C4—C5—C6	120.05 (19)
C13—C9—H9	106.1	C4—C5—H5	120.0
C10—C9—H9	106.1	C6—C5—H5	120.0
C8—C9—H9	106.1	C20—C21—H21A	109.5
C11—C12—C7	110.16 (12)	C20—C21—H21B	109.5
C11—C12—H12A	109.6	H21A—C21—H21B	109.5
C7—C12—H12A	109.6	C20—C21—H21C	109.5
C11—C12—H12B	109.6	H21A—C21—H21C	109.5
C7—C12—H12B	109.6	H21B—C21—H21C	109.5
H12A—C12—H12B	108.1	C3—C4—C5	119.78 (19)
O1—C20—C21	106.74 (12)	C3—C4—H4	120.1
O1—C20—H20A	110.4	C5—C4—H4	120.1
C21—C20—H20A	110.4		
C20—O1—C19—O2	-5.0 (2)	C7—C8—C9—C13	-162.62 (11)
C20—O1—C19—C8	172.73 (12)	N1—C8—C9—C10	91.15 (13)
C22—N1—C8—C19	170.75 (13)	C19—C8—C9—C10	-152.88 (11)
C22—N1—C8—C9	-70.21 (17)	C7—C8—C9—C10	-32.86 (15)
C22—N1—C8—C7	53.98 (18)	C1—C7—C12—C11	-167.17 (11)
O2—C19—C8—N1	-4.36 (18)	C8—C7—C12—C11	63.22 (14)
O1—C19—C8—N1	177.89 (10)	C19—O1—C20—C21	-169.98 (13)
O2—C19—C8—C9	-126.04 (14)	C7—C12—C11—O3	143.48 (15)
O1—C19—C8—C9	56.21 (14)	C7—C12—C11—C10	-34.51 (16)
O2—C19—C8—C7	113.11 (14)	C9—C10—C11—O3	155.50 (14)
O1—C19—C8—C7	-64.64 (14)	C9—C10—C11—C12	-26.50 (17)
C6—C1—C7—C12	148.86 (13)	C14—C13—C18—C17	0.9 (2)
C2—C1—C7—C12	-31.95 (18)	C9—C13—C18—C17	-178.16 (15)
C6—C1—C7—C8	-81.98 (16)	C18—C13—C14—C15	-0.6 (2)
C2—C1—C7—C8	97.21 (15)	C9—C13—C14—C15	178.47 (14)
N1—C8—C7—C1	76.19 (13)	C6—C1—C2—C3	1.6 (2)

C19—C8—C7—C1	-37.55 (14)	C7—C1—C2—C3	-177.59 (14)
C9—C8—C7—C1	-157.86 (11)	C2—C1—C6—C5	-1.5 (2)
N1—C8—C7—C12	-153.29 (11)	C7—C1—C6—C5	177.76 (15)
C19—C8—C7—C12	92.97 (13)	C8—N1—C22—O4	2.0 (3)
C9—C8—C7—C12	-27.35 (14)	C13—C14—C15—C16	-0.1 (2)
C18—C13—C9—C10	-38.46 (19)	C13—C18—C17—C16	-0.5 (3)
C14—C13—C9—C10	142.52 (14)	C14—C15—C16—C17	0.5 (3)
C18—C13—C9—C8	89.57 (16)	C18—C17—C16—C15	-0.3 (3)
C14—C13—C9—C8	-89.45 (15)	C1—C2—C3—C4	-1.1 (3)
C11—C10—C9—C13	-169.26 (12)	C1—C6—C5—C4	0.8 (3)
C11—C10—C9—C8	62.20 (15)	C2—C3—C4—C5	0.4 (3)
N1—C8—C9—C13	-38.62 (15)	C6—C5—C4—C3	-0.2 (3)
C19—C8—C9—C13	77.35 (13)		
