

Acta Crystallographica Section E

Structure Reports

Online

ISSN 1600-5368

Ethyl (Z)-2-(4-chlorobenzylidene)-3-oxobutanoate

 Shaaban K. Mohamed,^a Antar A. Abdelhamid,^b Atash V. Gurbanov,^b A. M. Maharramov^b and Seik Weng Ng^{c*}
^aSchool of Biology, Chemistry and Material Science, Manchester Metropolitan University, Manchester, England, ^bDepartment of Organic Chemistry, Baku State University, Baku, Azerbaijan, and ^cDepartment of Chemistry, University of Malaya, 50603 Kuala Lumpur, Malaysia

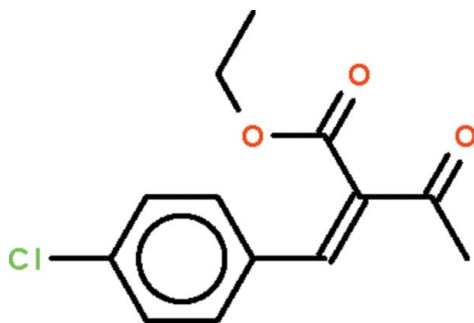
Correspondence e-mail: seikweng@um.edu.my

Received 6 January 2011; accepted 6 January 2011

 Key indicators: single-crystal X-ray study; $T = 295$ K; mean $\sigma(\text{C}-\text{C}) = 0.003$ Å; R factor = 0.065; wR factor = 0.201; data-to-parameter ratio = 17.9.

 The C=C double-bond in the title compound, $\text{C}_{13}\text{H}_{13}\text{ClO}_3$, has a *Z* configuration. The aliphatic substituents at one end of the double bond, *i.e.* the $\text{CH}_3\text{CO}-$ and $\text{C}_2\text{H}_5\text{O}_2\text{C}-$ groups, are aligned at 82.1 (3°) with respect to each other.

Related literature

 For related structures, see: Deng *et al.* (2007); Shi (2008).


Experimental

Crystal data

$\text{C}_{13}\text{H}_{13}\text{ClO}_3$	$V = 1242.49$ (13) Å ³
$M_r = 252.68$	$Z = 4$
Monoclinic, $P2_1/n$	Mo $K\alpha$ radiation
$a = 9.9956$ (6) Å	$\mu = 0.30$ mm ⁻¹
$b = 7.7487$ (5) Å	$T = 295$ K
$c = 16.2709$ (10) Å	$0.20 \times 0.20 \times 0.20$ mm
$\beta = 99.624$ (1)°	

Data collection

Bruker APEXII diffractometer	11255 measured reflections
Absorption correction: multi-scan (SADABS; Sheldrick, 1996)	2790 independent reflections
$T_{\min} = 0.942$, $T_{\max} = 0.942$	1968 reflections with $I > 2\sigma(I)$
	$R_{\text{int}} = 0.069$

Refinement

$R[F^2 > 2\sigma(F^2)] = 0.065$	156 parameters
$wR(F^2) = 0.201$	H-atom parameters constrained
$S = 1.02$	$\Delta\rho_{\text{max}} = 0.40$ e Å ⁻³
2790 reflections	$\Delta\rho_{\text{min}} = -0.52$ e Å ⁻³

Data collection: APEX2 (Bruker, 2005); cell refinement: SAINT (Bruker, 2005); data reduction: SAINT; program(s) used to solve structure: SHELXS97 (Sheldrick, 2008); program(s) used to refine structure: SHELXL97 (Sheldrick, 2008); molecular graphics: X-SEED (Barbour, 2001); software used to prepare material for publication: publCIF (Westrip, 2010).

We thank Manchester Metropolitan University, Baku State University and the University of Malaya for supporting this study.

Supplementary data and figures for this paper are available from the IUCr electronic archives (Reference: HG2789).

References

- Barbour, L. J. (2001). *J. Supramol. Chem.* **1**, 189–191.
- Bruker (2005). APEX2 and SAINT. Bruker AXS Inc., Madison, Wisconsin, USA.
- Deng, P.-F., Chen, G.-B., Feng, Y.-Q. & Song, J. (2007). *Acta Cryst.* **E63**, o3532.
- Sheldrick, G. M. (1996). SADABS. University of Göttingen, Germany.
- Sheldrick, G. M. (2008). *Acta Cryst.* **A64**, 112–122.
- Shi, X. (2008). *Acta Cryst.* **E64**, o2462.
- Westrip, S. P. (2010). *J. Appl. Cryst.* **43**, 920–925.

supporting information

Acta Cryst. (2011). E67, o365 [doi:10.1107/S1600536811000717]

Ethyl (Z)-2-(4-chlorobenzylidene)-3-oxobutanoate

Shaaban K. Mohamed, Antar A. Abdelhamid, Atash V. Gurbanov, A. M. Maharramov and Seik Weng Ng

S1. Comment

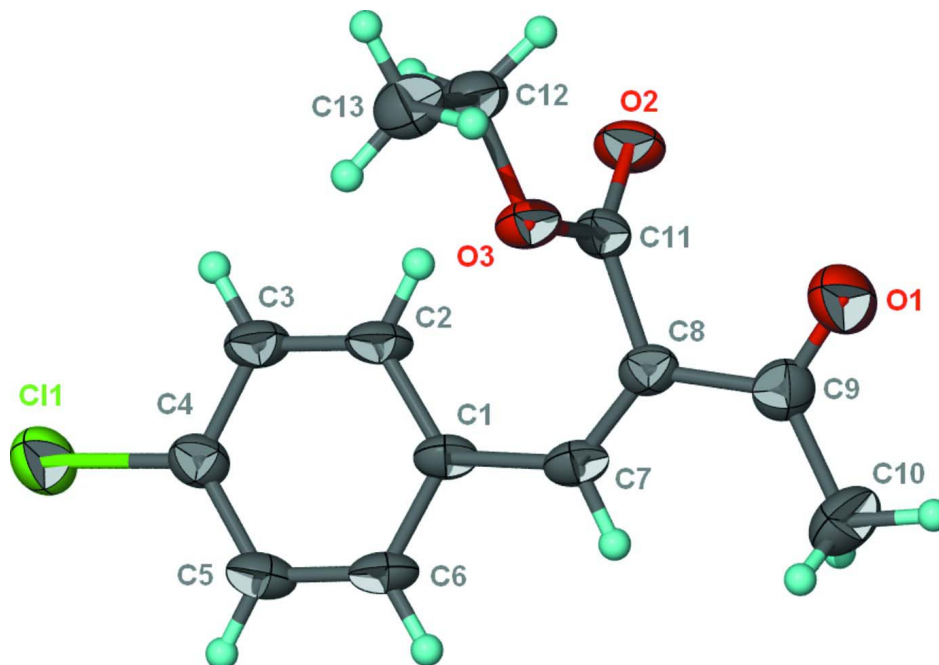
Trizma is a mildly-basic primary aminoalcohol that catalyzes Knoevenagel condensation reactions. The yield can be high under microwave irradiation; the title compound has been synthesized albeit by a conventional route. The carbon-carbon double-bond in $C_{13}H_{13}ClO_3$ has a *Z*-configuration. The aliphatic substituents at one end of the double-bond, *i.e.*, the CH_3CO- and planar $C_2H_5O_2C-$ groups, are aligned at $82.1(3)^\circ$ with respect to each other. Bond dimensions in the molecule compare favorably with those found in similar molecules (Deng *et al.*, 2007; Shi, 2008).

S2. Experimental

Trizma (0.01 mol), *p*-chlorobenzaldehyde (0.01 mol) and ethyl acetoacetate (0.02 mol) were heated in ethanol (50 ml) for 3 h. The reaction was monitored with TLC. The solid that separated was collected and recrystallized from ethanol to give a colorless crystals, m.p. 373 K (60% yield).

S3. Refinement

Carbon-bound H-atoms were placed in calculated positions [$C-H$ 0.93 to 0.97 Å; $U(H)$ 1.2 to $1.5U(C)$] and were included in the refinement in the riding model approximation, with $U(H)$ set to 1.2 to $1.5U(C)$.

**Figure 1**

Thermal ellipsoid plot (Barbour, 2001) of $C_{13}H_{13}ClO_3$ at the 50% probability level; hydrogen atoms are drawn as spheres of arbitrary radius.

Ethyl (Z)-2-(4-chlorobenzylidene)-3-oxobutanoate

Crystal data

$C_{13}H_{13}ClO_3$
 $M_r = 252.68$
 Monoclinic, $P2_1/n$
 Hall symbol: -P 2yn
 $a = 9.9956 (6) \text{ \AA}$
 $b = 7.7487 (5) \text{ \AA}$
 $c = 16.2709 (10) \text{ \AA}$
 $\beta = 99.624 (1)^\circ$
 $V = 1242.49 (13) \text{ \AA}^3$
 $Z = 4$

$F(000) = 528$
 $D_x = 1.351 \text{ Mg m}^{-3}$
 Mo $K\alpha$ radiation, $\lambda = 0.71073 \text{ \AA}$
 Cell parameters from 3560 reflections
 $\theta = 2.2\text{--}27.8^\circ$
 $\mu = 0.30 \text{ mm}^{-1}$
 $T = 295 \text{ K}$
 Prism, colorless
 $0.20 \times 0.20 \times 0.20 \text{ mm}$

Data collection

Bruker APEXII
 diffractometer
 Radiation source: fine-focus sealed tube
 Graphite monochromator
 φ and ω scans
 Absorption correction: multi-scan
 (SADABS; Sheldrick, 1996)
 $T_{\min} = 0.942$, $T_{\max} = 0.942$

11255 measured reflections
 2790 independent reflections
 1968 reflections with $I > 2\sigma(I)$
 $R_{\text{int}} = 0.069$
 $\theta_{\max} = 27.5^\circ$, $\theta_{\min} = 2.2^\circ$
 $h = -12 \rightarrow 12$
 $k = -10 \rightarrow 9$
 $l = -21 \rightarrow 21$

Refinement

Refinement on F^2

Least-squares matrix: full

$R[F^2 > 2\sigma(F^2)] = 0.065$

$wR(F^2) = 0.201$

$S = 1.02$

2790 reflections

156 parameters

0 restraints

Primary atom site location: structure-invariant
direct methods

Secondary atom site location: difference Fourier
map

Hydrogen site location: inferred from
neighbouring sites

H-atom parameters constrained

$w = 1/[\sigma^2(F_o^2) + (0.1314P)^2]$

where $P = (F_o^2 + 2F_c^2)/3$

$(\Delta/\sigma)_{\max} = 0.001$

$\Delta\rho_{\max} = 0.40 \text{ e } \text{\AA}^{-3}$

$\Delta\rho_{\min} = -0.52 \text{ e } \text{\AA}^{-3}$

Fractional atomic coordinates and isotropic or equivalent isotropic displacement parameters (\AA^2)

	x	y	z	$U_{\text{iso}}^*/U_{\text{eq}}$
C11	0.17886 (7)	0.43778 (11)	0.15024 (4)	0.0663 (3)
O1	0.2270 (2)	0.3753 (3)	0.72305 (11)	0.0703 (6)
O2	0.42363 (15)	0.4336 (2)	0.59728 (11)	0.0555 (5)
O3	0.27248 (13)	0.6486 (2)	0.56982 (10)	0.0452 (4)
C1	0.13562 (19)	0.3488 (3)	0.41918 (13)	0.0399 (5)
C2	0.2540 (2)	0.4199 (3)	0.39776 (14)	0.0453 (6)
H2A	0.3252	0.4497	0.4397	0.054*
C3	0.2669 (2)	0.4463 (3)	0.31626 (14)	0.0467 (6)
H3	0.3460	0.4940	0.3031	0.056*
C4	0.1611 (2)	0.4015 (3)	0.25368 (14)	0.0437 (5)
C5	0.0440 (2)	0.3274 (3)	0.27150 (14)	0.0490 (6)
H5	-0.0258	0.2957	0.2290	0.059*
C6	0.03270 (19)	0.3015 (3)	0.35374 (14)	0.0453 (5)
H6	-0.0458	0.2509	0.3662	0.054*
C7	0.11396 (19)	0.3175 (3)	0.50496 (14)	0.0418 (5)
H7	0.0387	0.2501	0.5098	0.050*
C8	0.18613 (19)	0.3714 (3)	0.57758 (13)	0.0405 (5)
C9	0.1549 (2)	0.3219 (3)	0.66085 (15)	0.0501 (6)
C10	0.0339 (3)	0.2111 (4)	0.66738 (18)	0.0693 (8)
H10A	0.0333	0.1832	0.7248	0.104*
H10B	0.0385	0.1068	0.6362	0.104*
H10C	-0.0476	0.2727	0.6453	0.104*
C11	0.3088 (2)	0.4853 (3)	0.58325 (13)	0.0395 (5)
C12	0.3811 (2)	0.7742 (3)	0.57098 (17)	0.0535 (6)
H12A	0.4275	0.7563	0.5239	0.064*
H12B	0.4466	0.7634	0.6219	0.064*
C13	0.3162 (3)	0.9486 (3)	0.56615 (18)	0.0592 (7)
H13A	0.3836	1.0353	0.5626	0.089*
H13B	0.2764	0.9679	0.6151	0.089*
H13C	0.2470	0.9546	0.5176	0.089*

Atomic displacement parameters (\AA^2)

	U^{11}	U^{22}	U^{33}	U^{12}	U^{13}	U^{23}
C11	0.0540 (4)	0.0967 (7)	0.0483 (4)	0.0031 (3)	0.0085 (3)	0.0024 (3)
O1	0.0600 (11)	0.0996 (17)	0.0513 (11)	-0.0032 (11)	0.0095 (9)	0.0006 (10)
O2	0.0281 (8)	0.0621 (12)	0.0735 (12)	0.0041 (7)	-0.0001 (7)	0.0076 (8)
O3	0.0282 (7)	0.0479 (10)	0.0601 (9)	-0.0011 (6)	0.0091 (6)	-0.0004 (7)
C1	0.0237 (8)	0.0445 (12)	0.0514 (12)	-0.0006 (8)	0.0061 (8)	-0.0051 (9)
C2	0.0235 (9)	0.0614 (15)	0.0504 (12)	-0.0061 (9)	0.0049 (8)	-0.0091 (10)
C3	0.0280 (10)	0.0594 (15)	0.0533 (13)	-0.0052 (9)	0.0086 (9)	-0.0040 (10)
C4	0.0335 (10)	0.0524 (13)	0.0446 (11)	0.0046 (9)	0.0050 (8)	-0.0025 (10)
C5	0.0295 (10)	0.0605 (14)	0.0540 (13)	-0.0031 (10)	-0.0013 (9)	-0.0107 (11)
C6	0.0237 (9)	0.0528 (13)	0.0590 (13)	-0.0075 (9)	0.0060 (8)	-0.0092 (10)
C7	0.0246 (9)	0.0464 (12)	0.0555 (12)	-0.0016 (8)	0.0099 (8)	-0.0030 (10)
C8	0.0280 (9)	0.0422 (12)	0.0522 (12)	0.0038 (9)	0.0092 (8)	0.0033 (9)
C9	0.0405 (11)	0.0575 (15)	0.0545 (13)	0.0068 (10)	0.0147 (10)	0.0040 (11)
C10	0.0592 (16)	0.080 (2)	0.0759 (18)	-0.0097 (14)	0.0314 (14)	0.0065 (15)
C11	0.0284 (9)	0.0499 (13)	0.0400 (10)	0.0034 (9)	0.0046 (8)	0.0021 (9)
C12	0.0379 (11)	0.0576 (16)	0.0653 (14)	-0.0090 (10)	0.0092 (10)	0.0009 (12)
C13	0.0581 (16)	0.0522 (15)	0.0686 (17)	-0.0050 (12)	0.0140 (13)	-0.0020 (12)

Geometric parameters (\AA , $^\circ$)

C11—C4	1.745 (2)	C6—H6	0.9300
O1—C9	1.213 (3)	C7—C8	1.344 (3)
O2—C11	1.201 (2)	C7—H7	0.9300
O3—C11	1.325 (3)	C8—C9	1.491 (3)
O3—C12	1.456 (3)	C8—C11	1.501 (3)
C1—C6	1.400 (3)	C9—C10	1.502 (4)
C1—C2	1.401 (3)	C10—H10A	0.9600
C1—C7	1.468 (3)	C10—H10B	0.9600
C2—C3	1.369 (3)	C10—H10C	0.9600
C2—H2A	0.9300	C12—C13	1.495 (4)
C3—C4	1.384 (3)	C12—H12A	0.9700
C3—H3	0.9300	C12—H12B	0.9700
C4—C5	1.377 (3)	C13—H13A	0.9600
C5—C6	1.376 (3)	C13—H13B	0.9600
C5—H5	0.9300	C13—H13C	0.9600
C11—O3—C12	116.98 (16)	O1—C9—C8	119.1 (2)
C6—C1—C2	117.2 (2)	O1—C9—C10	120.6 (2)
C6—C1—C7	118.26 (18)	C8—C9—C10	120.3 (2)
C2—C1—C7	124.50 (19)	C9—C10—H10A	109.5
C3—C2—C1	121.34 (19)	C9—C10—H10B	109.5
C3—C2—H2A	119.3	H10A—C10—H10B	109.5
C1—C2—H2A	119.3	C9—C10—H10C	109.5
C2—C3—C4	119.4 (2)	H10A—C10—H10C	109.5
C2—C3—H3	120.3	H10B—C10—H10C	109.5

C4—C3—H3	120.3	O2—C11—O3	125.2 (2)
C5—C4—C3	121.4 (2)	O2—C11—C8	124.1 (2)
C5—C4—C11	119.85 (17)	O3—C11—C8	110.72 (16)
C3—C4—C11	118.72 (18)	O3—C12—C13	106.71 (18)
C6—C5—C4	118.5 (2)	O3—C12—H12A	110.4
C6—C5—H5	120.8	C13—C12—H12A	110.4
C4—C5—H5	120.8	O3—C12—H12B	110.4
C5—C6—C1	122.12 (19)	C13—C12—H12B	110.4
C5—C6—H6	118.9	H12A—C12—H12B	108.6
C1—C6—H6	118.9	C12—C13—H13A	109.5
C8—C7—C1	130.0 (2)	C12—C13—H13B	109.5
C8—C7—H7	115.0	H13A—C13—H13B	109.5
C1—C7—H7	115.0	C12—C13—H13C	109.5
C7—C8—C9	123.8 (2)	H13A—C13—H13C	109.5
C7—C8—C11	123.3 (2)	H13B—C13—H13C	109.5
C9—C8—C11	112.85 (19)		
C6—C1—C2—C3	1.7 (3)	C1—C7—C8—C11	1.8 (4)
C7—C1—C2—C3	-179.6 (2)	C7—C8—C9—O1	179.1 (2)
C1—C2—C3—C4	-0.2 (4)	C11—C8—C9—O1	0.2 (3)
C2—C3—C4—C5	-1.3 (4)	C7—C8—C9—C10	-2.4 (4)
C2—C3—C4—C11	179.48 (18)	C11—C8—C9—C10	178.7 (2)
C3—C4—C5—C6	1.2 (4)	C12—O3—C11—O2	1.0 (3)
C11—C4—C5—C6	-179.59 (18)	C12—O3—C11—C8	-178.29 (18)
C4—C5—C6—C1	0.4 (4)	C7—C8—C11—O2	-99.3 (3)
C2—C1—C6—C5	-1.8 (3)	C9—C8—C11—O2	79.6 (3)
C7—C1—C6—C5	179.4 (2)	C7—C8—C11—O3	80.1 (3)
C6—C1—C7—C8	-169.6 (2)	C9—C8—C11—O3	-101.1 (2)
C2—C1—C7—C8	11.7 (4)	C11—O3—C12—C13	-172.43 (19)
C1—C7—C8—C9	-177.0 (2)		