

Acta Crystallographica Section E

Structure Reports

Online

ISSN 1600-5368

N,N'-Bis(pyridin-2-yl)benzene-1,4-dicarboxamide

Ta-Pin Tsai, Hui-Lin Hsiao and Jhy-Der Chen*

 Department of Chemistry, Chung-Yuan Christian University, Chung-Li, Taiwan
 Correspondence e-mail: jdchen@cycu.edu.tw

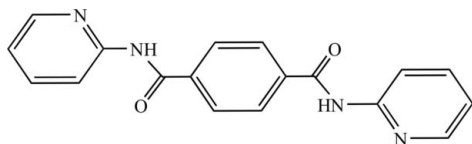
Received 6 December 2010; accepted 6 December 2010

 Key indicators: single-crystal X-ray study; $T = 298$ K; mean $\sigma(\text{C}-\text{C}) = 0.002$ Å; R factor = 0.040; wR factor = 0.112; data-to-parameter ratio = 16.2.

Molecules of the title compound, $\text{C}_{18}\text{H}_{14}\text{N}_4\text{O}_2$, are located around an inversion center and connected into chains in the crystal *via* intermolecular $\text{N}-\text{H}\cdots\text{N}$ hydrogen bonds generating an $R_2^2(8)$ motif.

Related literature

For *N,N'*-bis(pyridinyl) derivatives of 1,4-benzenedicarboxamide and their metal complexes, see: Tsai *et al.* (2010).



Experimental

Crystal data

$\text{C}_{18}\text{H}_{14}\text{N}_4\text{O}_2$	$\gamma = 73.695$ (6)°
$M_r = 318.33$	$V = 369.72$ (4) Å ³
Triclinic, $P\bar{1}$	$Z = 1$
$a = 5.7895$ (4) Å	Mo $K\alpha$ radiation
$b = 7.8315$ (6) Å	$\mu = 0.10$ mm ⁻¹
$c = 8.8460$ (5) Å	$T = 298$ K
$\alpha = 82.906$ (6)°	$0.60 \times 0.60 \times 0.56$ mm
$\beta = 74.083$ (5)°	

Data collection

Siemens P4 diffractometer
 Absorption correction: ψ scan
 (*XSCANS*; Siemens, 1995)
 $T_{\min} = 0.831$, $T_{\max} = 0.851$
 1962 measured reflections
 1787 independent reflections

1521 reflections with $I > 2\sigma(I)$
 $R_{\text{int}} = 0.013$
 3 standard reflections every 97 reflections
 intensity decay: none

Refinement

$R[F^2 > 2\sigma(F^2)] = 0.040$
 $wR(F^2) = 0.112$
 $S = 1.06$
 1787 reflections

110 parameters
 H-atom parameters constrained
 $\Delta\rho_{\max} = 0.32$ e Å⁻³
 $\Delta\rho_{\min} = -0.19$ e Å⁻³

Table 1

Hydrogen-bond geometry (Å, °).

$D-H\cdots A$	$D-H$	$H\cdots A$	$D\cdots A$	$D-H\cdots A$
$\text{N1}-\text{H1A}\cdots\text{N2}^i$	0.86	2.34	3.1679 (15)	163

 Symmetry code: (i) $-x + 1, -y, -z + 1$.

Data collection: *XSCANS* (Siemens, 1995); cell refinement: *XSCANS*; data reduction: *XSCANS* and *SHELXTL* (Sheldrick, 2008); program(s) used to solve structure: *SHELXS97* (Sheldrick, 2008); program(s) used to refine structure: *SHELXL97* (Sheldrick, 2008); molecular graphics: *SHELXTL*; software used to prepare material for publication: *SHELXTL*.

We are grateful to the National Science Council of the Republic of China for support. This research was also supported by the project of the specific research fields in Chung-Yuan Christian University, Taiwan, under grant No. CYCU-98-CR-CH.

Supplementary data and figures for this paper are available from the IUCr electronic archives (Reference: GK2331).

References

- Sheldrick, G. M. (2008). *Acta Cryst.* **A64**, 112–122.
 Siemens (1995). *XSCANS*. Siemens Analytical X-ray Instruments Inc., Madison, Wisconsin, USA.
 Tsai, T.-P., Huang, Y.-T., Ray, U., Chang, Y.-J., Cheng, P.-C., Wu, C.-J., Chen, J.-D. & Wang, J. C. (2010). *Polyhedron*, pp. 3081–3088.

supporting information

Acta Cryst. (2011). E67, o63 [https://doi.org/10.1107/S1600536810051172]

N,N'-Bis(pyridin-2-yl)benzene-1,4-dicarboxamide

Ta-Pin Tsai, Hui-Lin Hsiao and Jhy-Der Chen

S1. Comment

Several Cu(II), Cd(II) and Hg(II) complexes containing *N,N'*-bis(2/3-aryl)-1,4-benzenedicarboxamide ligands have been reported, which show one-dimensional and two-dimensional structures (Tsai, *et al.*, 2010). Within this project the crystal structure of the title compound was determined.

In its crystal structure intermolecular N—H⋯N hydrogen bonds are found (Tab. 1) and the molecule is located on a center of inversion (Fig. 1).

S2. Experimental

The title compound was prepared according to a published procedure (Tsai, *et al.*, 2010). Block crystals suitable for X-ray crystallography were obtained by slow evaporation of the solvent from a solution of the title compound in methanol.

S3. Refinement

All the hydrogen atoms were placed into idealized positions and refined in the riding atom approximation with C—H = 0.93 Å, N—H = 0.86 Å and $U_{\text{iso}}(\text{H}) = 1.2 U_{\text{eq}}(\text{C}, \text{N})$.

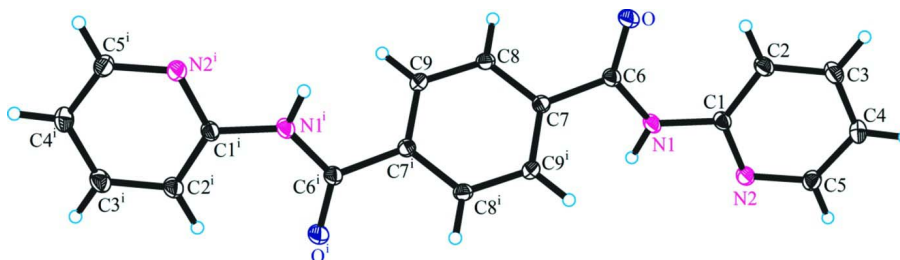


Figure 1

Crystal structure of the title compound with atom labeling and displacement ellipsoids drawn at the 30% probability level. Symmetry code: (i) = $-x + 2, -y, -z$.

N,N'-Bis(pyridin-2-yl)benzene-1,4-dicarboxamide

Crystal data

$\text{C}_{18}\text{H}_{14}\text{N}_4\text{O}_2$

$M_r = 318.33$

Triclinic, $P\bar{1}$

Hall symbol: $-P\ 1$

$a = 5.7895$ (4) Å

$b = 7.8315$ (6) Å

$c = 8.8460$ (5) Å

$\alpha = 82.906$ (6)°

$\beta = 74.083$ (5)°

$\gamma = 73.695$ (6)°

$V = 369.72$ (4) Å³

$Z = 1$

$F(000) = 166$

$D_x = 1.430$ Mg m⁻³

Mo $K\alpha$ radiation, $\lambda = 0.71073 \text{ \AA}$
 Cell parameters from 50 reflections
 $\theta = 4.8\text{--}15.0^\circ$
 $\mu = 0.10 \text{ mm}^{-1}$

$T = 298 \text{ K}$
 Block, pale yellow
 $0.60 \times 0.60 \times 0.56 \text{ mm}$

Data collection

Bruker P4
 diffractometer
 Radiation source: fine-focus sealed tube
 Graphite monochromator
 ω scans
 Absorption correction: ψ scan
 (XSCANS; Siemens, 1995)
 $T_{\min} = 0.831$, $T_{\max} = 0.851$
 1962 measured reflections

1787 independent reflections
 1521 reflections with $I > 2\sigma(I)$
 $R_{\text{int}} = 0.013$
 $\theta_{\max} = 28.0^\circ$, $\theta_{\min} = 2.4^\circ$
 $h = 0 \rightarrow 7$
 $k = -9 \rightarrow 10$
 $l = -11 \rightarrow 11$
 3 standard reflections every 97 reflections
 intensity decay: none

Refinement

Refinement on F^2
 Least-squares matrix: full
 $R[F^2 > 2\sigma(F^2)] = 0.040$
 $wR(F^2) = 0.112$
 $S = 1.06$
 1787 reflections
 110 parameters
 0 restraints
 Primary atom site location: structure-invariant
 direct methods
 Secondary atom site location: difference Fourier
 map

Hydrogen site location: inferred from
 neighbouring sites
 H-atom parameters constrained
 $w = 1/[\sigma^2(F_o^2) + (0.0468P)^2 + 0.1049P]$
 where $P = (F_o^2 + 2F_c^2)/3$
 $(\Delta/\sigma)_{\max} < 0.001$
 $\Delta\rho_{\max} = 0.32 \text{ e \AA}^{-3}$
 $\Delta\rho_{\min} = -0.19 \text{ e \AA}^{-3}$
 Extinction correction: SHELXL97 (Sheldrick,
 2008), $F_c^* = kF_c[1 + 0.001x F_c^2 \lambda^3 / \sin(2\theta)]^{-1/4}$
 Extinction coefficient: 0.193 (17)

Special details

Experimental. Refinement of F^2 against ALL reflections. The weighted R -factor wR and goodness of fit S are based on F^2 , conventional R -factors R are based on F , with F set to zero for negative F^2 . The threshold expression of $F^2 > \sigma(F^2)$ is used only for calculating R -factors(gt) etc. and is not relevant to the choice of reflections for refinement. R -factors based on F^2 are statistically about twice as large as those based on F , and R -factors based on ALL data will be even larger.

Geometry. All e.s.d.'s (except the e.s.d. in the dihedral angle between two l.s. planes) are estimated using the full covariance matrix. The cell e.s.d.'s are taken into account individually in the estimation of e.s.d.'s in distances, angles and torsion angles; correlations between e.s.d.'s in cell parameters are only used when they are defined by crystal symmetry. An approximate (isotropic) treatment of cell e.s.d.'s is used for estimating e.s.d.'s involving l.s. planes.

Refinement. Refinement of F^2 against ALL reflections. The weighted R -factor wR and goodness of fit S are based on F^2 , conventional R -factors R are based on F , with F set to zero for negative F^2 . The threshold expression of $F^2 > \sigma(F^2)$ is used only for calculating R -factors(gt) etc. and is not relevant to the choice of reflections for refinement. R -factors based on F^2 are statistically about twice as large as those based on F , and R -factors based on ALL data will be even larger.

Fractional atomic coordinates and isotropic or equivalent isotropic displacement parameters (\AA^2)

	x	y	z	$U_{\text{iso}}^*/U_{\text{eq}}$
O	1.1101 (2)	0.21659 (16)	0.30550 (13)	0.0497 (3)
N1	0.7461 (2)	0.13586 (16)	0.41052 (13)	0.0369 (3)
H1A	0.6695	0.0611	0.3982	0.044*
N2	0.4263 (2)	0.20173 (15)	0.63054 (13)	0.0353 (3)
C1	0.6435 (2)	0.23152 (17)	0.54787 (14)	0.0316 (3)
C2	0.7512 (3)	0.35023 (19)	0.59089 (16)	0.0393 (3)

H2B	0.9066	0.3632	0.5336	0.047*
C3	0.6200 (3)	0.4479 (2)	0.72110 (18)	0.0434 (4)
H3A	0.6853	0.5296	0.7523	0.052*
C4	0.3907 (3)	0.42384 (19)	0.80528 (17)	0.0422 (3)
H4A	0.2982	0.4900	0.8924	0.051*
C5	0.3035 (3)	0.29915 (19)	0.75631 (16)	0.0381 (3)
H5A	0.1507	0.2816	0.8138	0.046*
C6	0.9524 (2)	0.14708 (17)	0.29436 (15)	0.0322 (3)
C7	0.9716 (2)	0.06764 (16)	0.14401 (14)	0.0290 (3)
C8	1.2030 (2)	-0.03051 (17)	0.06322 (14)	0.0314 (3)
H8A	1.3391	-0.0509	0.1057	0.038*
C9	1.2324 (2)	-0.09833 (17)	-0.08032 (15)	0.0321 (3)
H9A	1.3876	-0.1641	-0.1340	0.039*

Atomic displacement parameters (Å²)

	U^{11}	U^{22}	U^{33}	U^{12}	U^{13}	U^{23}
O	0.0418 (6)	0.0697 (7)	0.0464 (6)	-0.0318 (5)	-0.0005 (5)	-0.0194 (5)
N1	0.0417 (6)	0.0460 (6)	0.0291 (5)	-0.0261 (5)	-0.0008 (5)	-0.0092 (5)
N2	0.0366 (6)	0.0411 (6)	0.0302 (5)	-0.0166 (5)	-0.0041 (4)	-0.0045 (4)
C1	0.0368 (6)	0.0353 (6)	0.0256 (6)	-0.0148 (5)	-0.0065 (5)	-0.0023 (5)
C2	0.0426 (7)	0.0445 (8)	0.0364 (7)	-0.0224 (6)	-0.0055 (6)	-0.0067 (6)
C3	0.0532 (9)	0.0383 (7)	0.0443 (8)	-0.0182 (6)	-0.0115 (7)	-0.0100 (6)
C4	0.0491 (8)	0.0360 (7)	0.0382 (7)	-0.0074 (6)	-0.0055 (6)	-0.0110 (5)
C5	0.0360 (7)	0.0401 (7)	0.0353 (7)	-0.0101 (6)	-0.0029 (5)	-0.0041 (5)
C6	0.0332 (6)	0.0359 (6)	0.0298 (6)	-0.0144 (5)	-0.0052 (5)	-0.0039 (5)
C7	0.0300 (6)	0.0323 (6)	0.0259 (6)	-0.0139 (5)	-0.0030 (4)	-0.0015 (4)
C8	0.0267 (6)	0.0384 (7)	0.0308 (6)	-0.0119 (5)	-0.0068 (5)	-0.0011 (5)
C9	0.0263 (6)	0.0359 (6)	0.0320 (6)	-0.0084 (5)	-0.0020 (5)	-0.0057 (5)

Geometric parameters (Å, °)

O—C6	1.2169 (16)	C4—C5	1.377 (2)
N1—C6	1.3614 (16)	C4—H4A	0.9300
N1—C1	1.4034 (16)	C5—H5A	0.9300
N1—H1A	0.8600	C6—C7	1.5009 (17)
N2—C1	1.3375 (17)	C7—C8	1.3888 (17)
N2—C5	1.3403 (17)	C7—C9 ⁱ	1.3936 (17)
C1—C2	1.3932 (18)	C8—C9	1.3860 (17)
C2—C3	1.378 (2)	C8—H8A	0.9300
C2—H2B	0.9300	C9—C7 ⁱ	1.3936 (17)
C3—C4	1.384 (2)	C9—H9A	0.9300
C3—H3A	0.9300		
C6—N1—C1	127.85 (11)	N2—C5—C4	123.77 (13)
C6—N1—H1A	116.1	N2—C5—H5A	118.1
C1—N1—H1A	116.1	C4—C5—H5A	118.1
C1—N2—C5	117.11 (11)	O—C6—N1	124.94 (12)

N2—C1—C2	123.38 (12)	O—C6—C7	120.89 (11)
N2—C1—N1	112.88 (11)	N1—C6—C7	114.16 (11)
C2—C1—N1	123.70 (12)	C8—C7—C9 ⁱ	119.81 (11)
C3—C2—C1	117.84 (13)	C8—C7—C6	118.37 (11)
C3—C2—H2B	121.1	C9 ⁱ —C7—C6	121.72 (11)
C1—C2—H2B	121.1	C9—C8—C7	120.42 (12)
C2—C3—C4	119.75 (13)	C9—C8—H8A	119.8
C2—C3—H3A	120.1	C7—C8—H8A	119.8
C4—C3—H3A	120.1	C8—C9—C7 ⁱ	119.77 (11)
C5—C4—C3	118.06 (13)	C8—C9—H9A	120.1
C5—C4—H4A	121.0	C7 ⁱ —C9—H9A	120.1
C3—C4—H4A	121.0		

Symmetry code: (i) $-x+2, -y, -z$.

Hydrogen-bond geometry (Å, °)

<i>D—H...A</i>	<i>D—H</i>	<i>H...A</i>	<i>D...A</i>	<i>D—H...A</i>
N1—H1A...N2 ⁱⁱ	0.86	2.34	3.1679 (15)	163

Symmetry code: (ii) $-x+1, -y, -z+1$.