

Acta Crystallographica Section E

## Structure Reports

Online

ISSN 1600-5368

# catena-Poly[[bis( $\mu$ -5-bromopyridine-3-carboxylato- $\kappa^2$ O:O')dicopper(II)]-bis( $\mu$ -5-bromopyridine-3-carboxylato)- $\kappa^3$ O,O':N; $\kappa^3$ N:O,O']

Paul DeBurgomaster and Jon Zubieta\*

Department of Chemistry, Syracuse University, Syracuse, New York 13244, USA

Correspondence e-mail: jazubiet@syr.edu

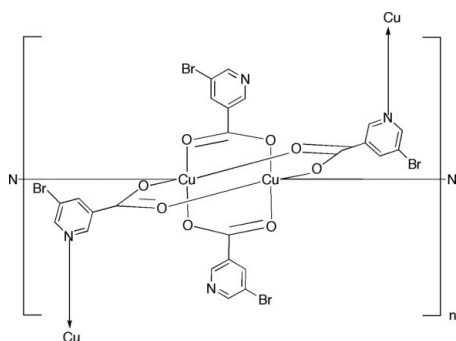
Received 7 October 2010; accepted 19 October 2010

 Key indicators: single-crystal X-ray study;  $T = 90$  K; mean  $\sigma(\text{C}-\text{C}) = 0.003$  Å;  $R$  factor = 0.021;  $wR$  factor = 0.054; data-to-parameter ratio = 18.8.

The title compound  $[\text{Cu}_2(\text{C}_6\text{H}_3\text{BrNO}_2)_4]_n$ , forms sheets in the  $bc$  plane. The structure features the dinuclear paddle-wheel cage motif common to copper(II) carboxylates. The polymeric structure is achieved through bridging between binuclear units by the pyridyl donors of two of the four carboxylates of the cage. Each cage engages in axial bonding at each copper atom to a pyridyl nitrogen donor and extends two 5-bromopyridine-3-carboxylate groups to bridge to adjacent binuclear sites in the  $bc$  plane. Each cage is linked to four adjacent cages in the plane. The intradimer  $\text{Cu}\cdots\text{Cu}$  distance is 2.6465 (5) Å. The remaining 5-bromopyridine-3-carboxylate groups project into the interlamellar domain and interdigitate in pairs from each neighboring layer.

## Related literature

For a general review of copper(II) carboxylates, see: Doedens (1976). For polynuclear copper carboxylates with the  $[\text{Cu}_2(\text{O}_2\text{CR})_4]$  core, see: Agterberg *et al.* (1997); Valentine *et al.* (1974); Yamanaka *et al.* (1991). For the preparation of copper coordination polymers under hydrothermal conditions, see: Lu (2003). For general discussion of hydrothermal methods, see: Gopalakrishnan (1995); Zubieta (2004).



## Experimental

## Crystal data

$[\text{Cu}_2(\text{C}_6\text{H}_3\text{BrNO}_2)_4]$   
 $M_r = 931.11$   
 Monoclinic,  $P2_1/n$   
 $a = 11.1390$  (12) Å  
 $b = 11.5866$  (13) Å  
 $c = 12.6325$  (14) Å  
 $\beta = 115.432$  (2)°

$V = 1472.4$  (3) Å<sup>3</sup>  
 $Z = 2$   
 Mo  $K\alpha$  radiation  
 $\mu = 6.93$  mm<sup>-1</sup>  
 $T = 90$  K  
 $0.35 \times 0.30 \times 0.27$  mm

## Data collection

Bruker APEX CCD area-detector diffractometer  
 Absorption correction: multi-scan (SADABS; Bruker, 1998)  
 $T_{\min} = 0.196$ ,  $T_{\max} = 0.256$

14281 measured reflections  
 3571 independent reflections  
 3218 reflections with  $I > 2\sigma(I)$   
 $R_{\text{int}} = 0.022$

## Refinement

$R[F^2 > 2\sigma(F^2)] = 0.021$   
 $wR(F^2) = 0.054$   
 $S = 1.05$   
 3571 reflections

190 parameters  
 H-atom parameters constrained  
 $\Delta\rho_{\text{max}} = 0.77$  e Å<sup>-3</sup>  
 $\Delta\rho_{\text{min}} = -0.51$  e Å<sup>-3</sup>

Data collection: SMART (Bruker, 1998); cell refinement: SAINT (Bruker, 1998); data reduction: SAINT; program(s) used to solve structure: SHELXS97 (Sheldrick, 2008); program(s) used to refine structure: SHELXL97 (Sheldrick, 2008); molecular graphics: DIAMOND (Brandenburg & Putz, 1999); software used to prepare material for publication: SHELXTL (Sheldrick, 2008).

This work was supported by a grant from the National Science Foundation, CHE-0907787.

Supplementary data and figures for this paper are available from the IUCr electronic archives (Reference: RN2072).

## References

- Agterberg, F. P. W., Kluit, H. A. J. P., Driessen, W. L., Oevering, H., Buijs, W., Lakin, M. T., Spek, A. L. & Reedijk, J. (1997). *Inorg. Chem.* **36**, 4321–4328.  
 Brandenburg, K. & Putz, H. (1999). *DIAMOND*. Crystal Impact GbR, Bonn, Germany.  
 Bruker (1998). *SMART, SAINT and SADABS*. Bruker AXS Inc., Madison, Wisconsin, USA.  
 Doedens, R. J. (1976). *Prog. Inorg. Chem.* **21**, 209–231.  
 Gopalakrishnan, J. (1995). *Chem. Mater.* **7**, 1265–1275.  
 Lu, J. L. (2003). *Coord. Chem. Rev.* **246**, 327–347.  
 Sheldrick, G. M. (2008). *Acta Cryst.* **A64**, 112–122.  
 Valentine, J. S., Silverstein, A. J. & Soos, Z. G. (1974). *J. Am. Chem. Soc.* **96**, 97–103.  
 Yamanaka, M., Uekusa, H., Ohba, S., Saito, Y., Iwata, S., Kato, M., Tokii, T., Muto, Y. & Steward, O. W. (1991). *Acta Cryst.* **B47**, 344–355.  
 Zubieta, J. (2004). *Comprehensive Coordination Chemistry II*, edited by J. A. McCleverty & T. J. Meyer, pp. 697–709. Amsterdam: Elsevier.

## supporting information

*Acta Cryst.* (2010). E66, m1459 [https://doi.org/10.1107/S160053681004242X]

***catena*-Poly[[bis( $\mu$ -5-bromopyridine-3-carboxylato- $\kappa^2$ O:O')dicopper(II)]-bis( $\mu$ -5-bromopyridine-3-carboxylato)- $\kappa^3$ O,O':N; $\kappa^3$ N:O,O']**

**Paul DeBurgomaster and Jon Zubieta**

### S1. Comment

The dinuclear *paddle-wheel* cage structure of copper(II) carboxylates is well established [Doedens (1976)]. Polymeric structures incorporating this core can be obtained using ligands capable of bridging between the dinuclear units [Agterberg, *et al.* (1997); Valentine, *et al.* (1974); Yamanaka, *et al.* (1991)]. Since hydrothermal methods are most effective for the preparation and crystallization of organic-inorganic coordination polymers [Gopalakrishnan (1995); Zubieta (2004)], the crystal engineering of copper-containing materials under these conditions has witnessed considerable contemporary attention [Lu (2003)]. In the course of our investigations of Cu(II)-ligand substructures in complex metal oxide hybrid materials, the two-dimensional material [Cu<sub>2</sub>(O<sub>2</sub>CC<sub>5</sub>H<sub>3</sub>NBr)<sub>4</sub>] was isolated.

As shown in Fig. 1, the title compound is two-dimensional, forming sheets oriented parallel to the crystallographic *bc* plane. The fundamental building block of these sheets is the dinuclear *paddle-wheel* cage structure [Cu<sub>2</sub>(O<sub>2</sub>CR)<sub>4</sub>], shown in Fig. 2. The four oxygen donors of the basal plane about the crystallographically unique copper site exhibit Cu—O distances in the range of 1.959 (1) Å to 1.985 (1) Å. There is a crystallographic inversion center at the mid-point of the CuLCu vector relating the two halves of the cage. The Cu...Cu distance is 2.6465 (5) Å.

The cages are linked into the two-dimensional network through the pyridyl nitrogen donors of two of the 5-bromopyridine-3-carboxylato ligands, with a copper-axial nitrogen distance of 2.160 (2) Å. The connectivity pattern links each [Cu<sub>2</sub>(O<sub>2</sub>CR)<sub>4</sub>] cage to four neighboring cages to provide the 2-D extension. Two 5-bromopyridine-3-carboxylato ligands of each cage are pendant and project from either face of the polymeric sheets into the interlamellar domains (Fig. 3). These projecting groups interdigitate in pairs with those of neighboring sheets to provide a relatively densely packed arrangement of sheets.

### S2. Experimental

A solution containing Cu(II) acetate hydrate (0.201 g, 1.01 mmol), 5-bromo-2-pyridylcarboxylic acid (0.102, 0.50 mmol), methanol (5.00 ml, 123.56 mmol), and DMF (5.00 ml, 64.58 mmol), in the mole ratio 2.02:1.00:247:129 was stirred briefly before transfer to a 20 ml glass vial. The capped vial was heated at 75 °C for 72 h. Green blocks of the title compound, suitable for X-ray diffraction, were isolated in 50% yield. Initial and final pH values of 4.0 and 4.0, respectively, were recorded. Anal. Calcd. for C<sub>12</sub>H<sub>6</sub>Br<sub>2</sub>CuN<sub>2</sub>O<sub>4</sub>:C, 30.9; H, 1.29; N, 6.01. Found: C, 29.7; H, 1.55; N, 5.93.

### S3. Refinement

All hydrogen atoms were discernable in the difference Fourier map. The hydrogen atoms were placed in calculated positions with C—H = 0.95 Å and included in the riding model approximation with  $U_{\text{iso}}(\text{H}) = 1.2U_{\text{eq}}(\text{C})$ .

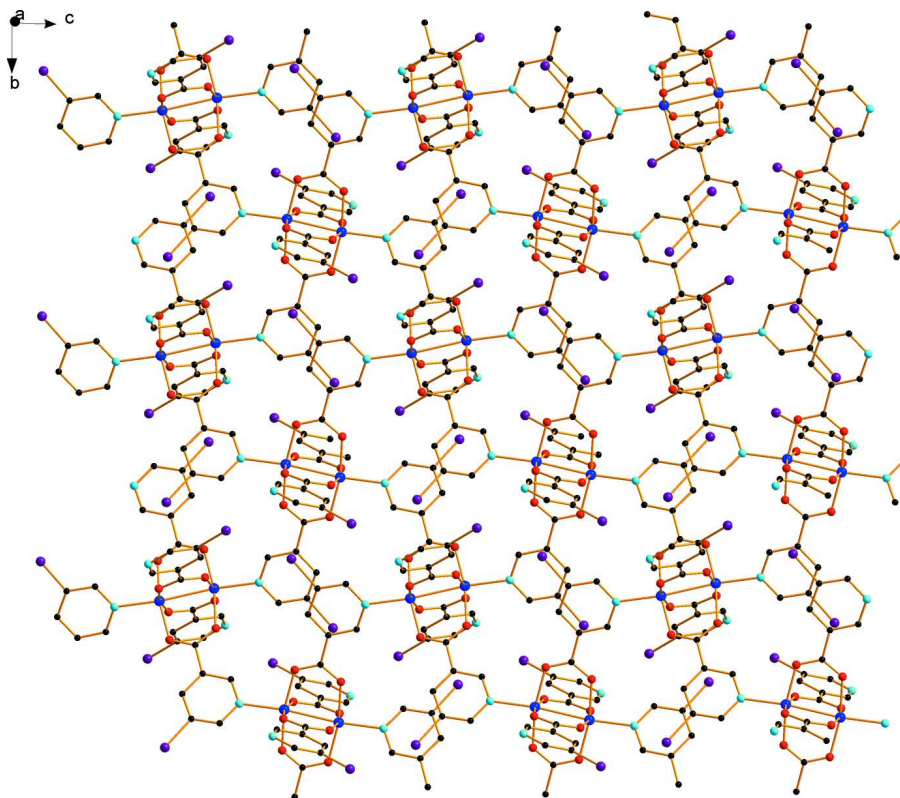
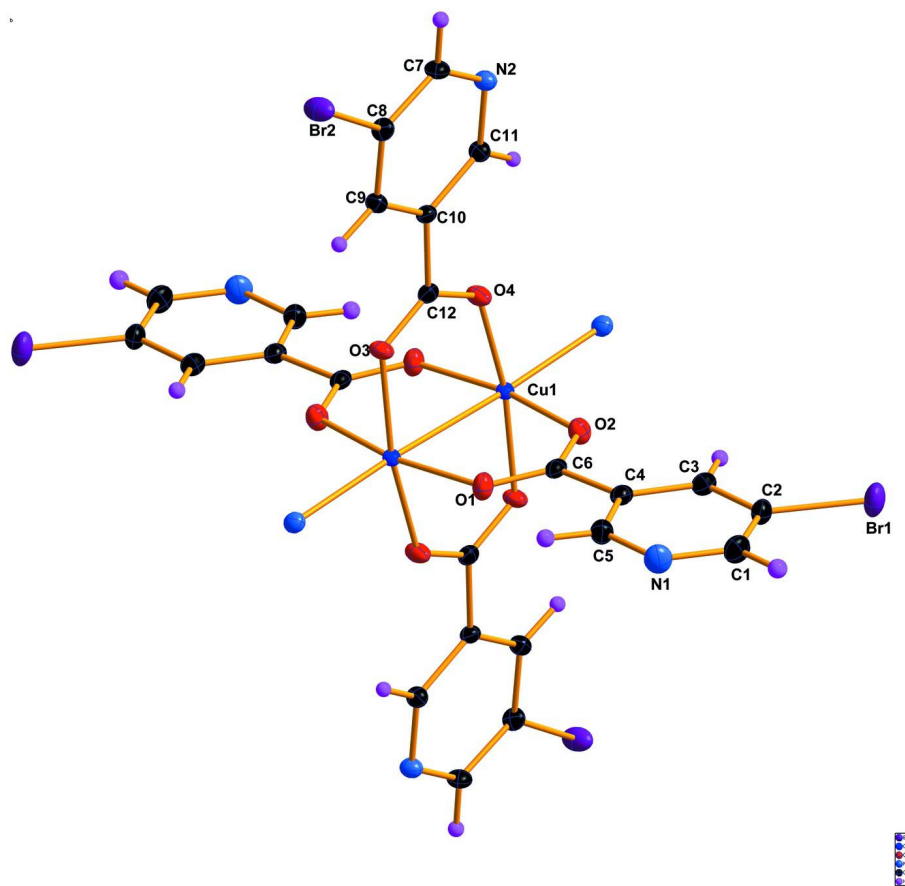


Figure 1

A view of the two-dimensional structure of [Cu<sub>2</sub>(O<sub>2</sub>CC<sub>3</sub>H<sub>3</sub>NBr)<sub>4</sub>] in the *bc* plane. Color scheme as for Fig. 2.

**Figure 2**

An *ORTEP* view of the dinuclear *paddle-wheel* cage building block of the title compound, showing the atom-labeling scheme for the asymmetric unit and 50% displacement ellipsoids. Color scheme: Cu, blue; Br, maroon; O, red; N, light blue; C, black; H, pink.

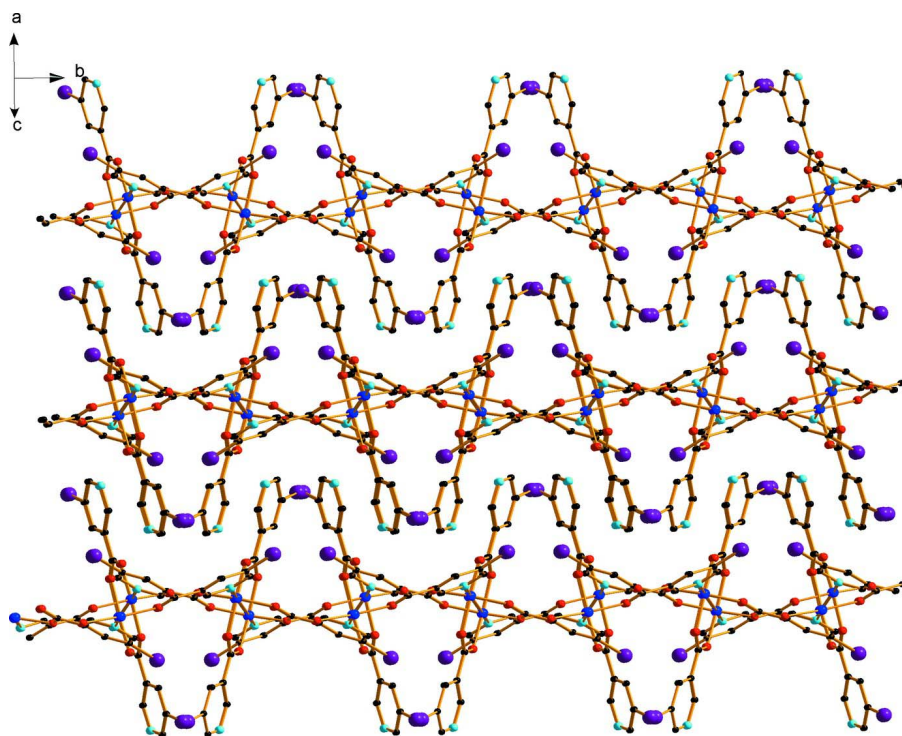


Figure 3

A view of the packing showing the interdigitation of the pendant 5-bromo-2-pyridyl groups. Color scheme as for Fig. 2.

*catena*-Poly[[bis( $\mu$ -5-bromopyridine-3-carboxylato- $\kappa^2$ O: $O'$ )dicopper(II)]-bis( $\mu$ -5-bromopyridine-3-carboxylato)- $\kappa^3$ O, $O'$ :N; $\kappa^3$ N: $O$ , $O'$ ]

#### Crystal data

[Cu<sub>2</sub>(C<sub>6</sub>H<sub>3</sub>BrNO<sub>2</sub>)<sub>4</sub>]

$M_r = 931.11$

Monoclinic,  $P2_1/n$

Hall symbol: -P 2yn

$a = 11.1390$  (12) Å

$b = 11.5866$  (13) Å

$c = 12.6325$  (14) Å

$\beta = 115.432$  (2)°

$V = 1472.4$  (3) Å<sup>3</sup>

$Z = 2$

$F(000) = 892$

$D_x = 2.100$  Mg m<sup>-3</sup>

$D_m = 2.09$  (2) Mg m<sup>-3</sup>

$D_m$  measured by flotation

Mo  $K\alpha$  radiation,  $\lambda = 0.71073$  Å

Cell parameters from 3266 reflections

$\theta = 2.4$ – $28.3^\circ$

$\mu = 6.93$  mm<sup>-1</sup>

$T = 90$  K

Block, blue

$0.35 \times 0.30 \times 0.27$  mm

#### Data collection

Bruker APEX CCD area-detector  
diffractometer

Radiation source: fine-focus sealed tube

Graphite monochromator

Detector resolution: 512 pixels mm<sup>-1</sup>

$\varphi$  and  $\omega$  scans

Absorption correction: multi-scan

(*SADABS*; Bruker, 1998)

$T_{\min} = 0.196$ ,  $T_{\max} = 0.256$

14281 measured reflections

3571 independent reflections

3218 reflections with  $I > 2\sigma(I)$

$R_{\text{int}} = 0.022$

$\theta_{\max} = 28.1^\circ$ ,  $\theta_{\min} = 2.0^\circ$

$h = -14 \rightarrow 14$

$k = -15 \rightarrow 14$

$l = -15 \rightarrow 16$

*Refinement*

Refinement on  $F^2$   
 Least-squares matrix: full  
 $R[F^2 > 2\sigma(F^2)] = 0.021$   
 $wR(F^2) = 0.054$   
 $S = 1.05$   
 3571 reflections  
 190 parameters  
 0 restraints  
 Primary atom site location: structure-invariant  
 direct methods

Secondary atom site location: difference Fourier  
 map  
 Hydrogen site location: inferred from  
 neighbouring sites  
 H-atom parameters constrained  
 $w = 1/[\sigma^2(F_o^2) + (0.0258P)^2 + 1.3076P]$   
 where  $P = (F_o^2 + 2F_c^2)/3$   
 $(\Delta/\sigma)_{\max} = 0.001$   
 $\Delta\rho_{\max} = 0.77 \text{ e } \text{\AA}^{-3}$   
 $\Delta\rho_{\min} = -0.51 \text{ e } \text{\AA}^{-3}$

*Special details*

**Geometry.** All e.s.d.'s (except the e.s.d. in the dihedral angle between two l.s. planes) are estimated using the full covariance matrix. The cell e.s.d.'s are taken into account individually in the estimation of e.s.d.'s in distances, angles and torsion angles; correlations between e.s.d.'s in cell parameters are only used when they are defined by crystal symmetry. An approximate (isotropic) treatment of cell e.s.d.'s is used for estimating e.s.d.'s involving l.s. planes.

**Refinement.** Refinement of  $F^2$  against ALL reflections. The weighted  $R$ -factor  $wR$  and goodness of fit  $S$  are based on  $F^2$ , conventional  $R$ -factors  $R$  are based on  $F$ , with  $F$  set to zero for negative  $F^2$ . The threshold expression of  $F^2 > \sigma(F^2)$  is used only for calculating  $R$ -factors(gt) *etc.* and is not relevant to the choice of reflections for refinement.  $R$ -factors based on  $F^2$  are statistically about twice as large as those based on  $F$ , and  $R$ -factors based on ALL data will be even larger.

*Fractional atomic coordinates and isotropic or equivalent isotropic displacement parameters ( $\text{\AA}^2$ )*

	$x$	$y$	$z$	$U_{\text{iso}}^*/U_{\text{eq}}$
Br1	-0.18056 (2)	0.76143 (2)	-0.11231 (2)	0.02559 (7)
Br2	0.84249 (2)	0.868086 (18)	0.603257 (19)	0.02064 (6)
Cu1	0.56886 (2)	1.02600 (2)	0.11208 (2)	0.01009 (6)
O1	0.40781 (14)	0.98221 (13)	0.12844 (14)	0.0179 (3)
O2	0.29176 (14)	0.93567 (13)	-0.06153 (13)	0.0174 (3)
O3	1.00043 (14)	1.31393 (12)	0.57312 (13)	0.0153 (3)
O4	0.88355 (15)	1.36151 (12)	0.38361 (13)	0.0176 (3)
N1	0.08987 (19)	0.89646 (18)	0.19994 (17)	0.0232 (4)
N2	0.70137 (17)	1.05035 (15)	0.29489 (15)	0.0142 (3)
C1	-0.0161 (2)	0.8474 (2)	0.1151 (2)	0.0214 (5)
H1	-0.0875	0.8233	0.1320	0.026*
C2	-0.0258 (2)	0.83017 (19)	0.00277 (19)	0.0176 (4)
C3	0.0770 (2)	0.86282 (17)	-0.0242 (2)	0.0161 (4)
H3	0.0718	0.8518	-0.1006	0.019*
C4	0.1886 (2)	0.91256 (18)	0.06474 (19)	0.0146 (4)
C5	0.1900 (2)	0.92849 (19)	0.17425 (19)	0.0181 (4)
H5	0.2657	0.9639	0.2340	0.022*
C6	0.30570 (19)	0.94647 (17)	0.04201 (19)	0.0139 (4)
C7	0.7262 (2)	0.96880 (18)	0.37741 (18)	0.0146 (4)
H7	0.6806	0.8971	0.3561	0.018*
C8	0.8166 (2)	0.98675 (17)	0.49263 (18)	0.0137 (4)
C9	0.8847 (2)	1.09039 (17)	0.52675 (18)	0.0138 (4)
H9	0.9470	1.1034	0.6056	0.017*
C10	0.85843 (19)	1.17443 (17)	0.44120 (18)	0.0116 (4)
C11	0.76676 (19)	1.15074 (17)	0.32653 (18)	0.0132 (4)

H11	0.7500	1.2083	0.2683	0.016*
C12	0.92049 (19)	1.29269 (17)	0.46889 (18)	0.0124 (4)

*Atomic displacement parameters (Å<sup>2</sup>)*

	$U^{11}$	$U^{22}$	$U^{33}$	$U^{12}$	$U^{13}$	$U^{23}$
Br1	0.01981 (11)	0.03107 (13)	0.02547 (13)	-0.01189 (9)	0.00931 (10)	-0.00522 (10)
Br2	0.03049 (12)	0.01399 (11)	0.01496 (11)	-0.00414 (8)	0.00738 (9)	0.00332 (8)
Cu1	0.01025 (11)	0.00862 (12)	0.00980 (12)	0.00020 (8)	0.00280 (9)	0.00007 (9)
O1	0.0152 (7)	0.0211 (8)	0.0180 (8)	-0.0049 (6)	0.0078 (6)	-0.0028 (6)
O2	0.0140 (7)	0.0229 (8)	0.0163 (8)	-0.0013 (6)	0.0073 (6)	0.0000 (6)
O3	0.0183 (7)	0.0113 (7)	0.0127 (7)	-0.0035 (6)	0.0033 (6)	-0.0016 (6)
O4	0.0220 (8)	0.0105 (7)	0.0139 (8)	-0.0030 (6)	0.0015 (6)	0.0012 (6)
N1	0.0233 (10)	0.0302 (11)	0.0186 (10)	-0.0033 (8)	0.0113 (8)	0.0015 (8)
N2	0.0163 (8)	0.0120 (8)	0.0130 (9)	-0.0012 (6)	0.0049 (7)	-0.0006 (7)
C1	0.0197 (10)	0.0245 (11)	0.0239 (12)	-0.0031 (9)	0.0130 (9)	0.0016 (9)
C2	0.0142 (9)	0.0171 (10)	0.0201 (11)	-0.0033 (8)	0.0060 (8)	-0.0010 (9)
C3	0.0176 (10)	0.0140 (10)	0.0184 (11)	0.0002 (8)	0.0092 (8)	0.0003 (8)
C4	0.0143 (9)	0.0124 (9)	0.0175 (10)	0.0008 (7)	0.0073 (8)	0.0024 (8)
C5	0.0169 (10)	0.0190 (11)	0.0170 (11)	-0.0025 (8)	0.0060 (8)	0.0001 (8)
C6	0.0132 (9)	0.0090 (9)	0.0197 (11)	0.0008 (7)	0.0071 (8)	0.0017 (8)
C7	0.0168 (10)	0.0119 (9)	0.0151 (10)	-0.0038 (7)	0.0068 (8)	-0.0024 (8)
C8	0.0174 (9)	0.0116 (9)	0.0125 (10)	0.0005 (7)	0.0068 (8)	0.0038 (8)
C9	0.0145 (9)	0.0143 (10)	0.0115 (10)	-0.0005 (7)	0.0045 (8)	-0.0016 (8)
C10	0.0130 (9)	0.0094 (9)	0.0127 (10)	0.0000 (7)	0.0056 (7)	-0.0011 (7)
C11	0.0142 (9)	0.0114 (9)	0.0132 (10)	-0.0007 (7)	0.0053 (8)	0.0013 (7)
C12	0.0125 (9)	0.0107 (9)	0.0154 (10)	0.0004 (7)	0.0072 (8)	-0.0007 (8)

*Geometric parameters (Å, °)*

Br1—C2	1.888 (2)	C1—C2	1.390 (3)
Br2—C8	1.892 (2)	C1—H1	0.9500
Cu1—O1	1.9588 (14)	C2—C3	1.380 (3)
Cu1—O2 <sup>i</sup>	1.9665 (14)	C3—C4	1.393 (3)
Cu1—O4 <sup>ii</sup>	1.9726 (14)	C3—H3	0.9500
Cu1—O3 <sup>iii</sup>	1.9852 (14)	C4—C5	1.389 (3)
Cu1—N2	2.1595 (18)	C4—C6	1.504 (3)
Cu1—Cu1 <sup>i</sup>	2.6465 (5)	C5—H5	0.9500
O1—C6	1.261 (3)	C7—C8	1.384 (3)
O2—C6	1.255 (3)	C7—H7	0.9500
O3—C12	1.257 (2)	C8—C9	1.387 (3)
O4—C12	1.259 (2)	C9—C10	1.389 (3)
N1—C1	1.334 (3)	C9—H9	0.9500
N1—C5	1.340 (3)	C10—C11	1.395 (3)
N2—C11	1.339 (3)	C10—C12	1.507 (3)
N2—C7	1.345 (3)	C11—H11	0.9500
O1—Cu1—O2 <sup>i</sup>	168.33 (6)	C2—C3—H3	121.2

O1—Cu1—O4 <sup>ii</sup>	89.67 (6)	C4—C3—H3	121.2
O2 <sup>i</sup> —Cu1—O4 <sup>ii</sup>	89.25 (7)	C5—C4—C3	118.87 (19)
O1—Cu1—O3 <sup>iii</sup>	89.81 (6)	C5—C4—C6	121.06 (19)
O2 <sup>i</sup> —Cu1—O3 <sup>iii</sup>	88.91 (6)	C3—C4—C6	120.06 (19)
O4 <sup>ii</sup> —Cu1—O3 <sup>iii</sup>	168.37 (6)	N1—C5—C4	123.3 (2)
O1—Cu1—N2	99.05 (7)	N1—C5—H5	118.3
O2 <sup>i</sup> —Cu1—N2	92.60 (6)	C4—C5—H5	118.3
O4 <sup>ii</sup> —Cu1—N2	92.56 (6)	O2—C6—O1	126.63 (18)
O3 <sup>iii</sup> —Cu1—N2	99.00 (6)	O2—C6—C4	116.34 (18)
O1—Cu1—Cu1 <sup>i</sup>	85.28 (5)	O1—C6—C4	117.03 (18)
O2 <sup>i</sup> —Cu1—Cu1 <sup>i</sup>	83.08 (5)	N2—C7—C8	121.60 (18)
O4 <sup>ii</sup> —Cu1—Cu1 <sup>i</sup>	80.50 (4)	N2—C7—H7	119.2
O3 <sup>iii</sup> —Cu1—Cu1 <sup>i</sup>	87.88 (4)	C8—C7—H7	119.2
N2—Cu1—Cu1 <sup>i</sup>	171.84 (5)	C7—C8—C9	120.71 (18)
C6—O1—Cu1	121.33 (13)	C7—C8—Br2	118.60 (15)
C6—O2—Cu1 <sup>i</sup>	123.66 (13)	C9—C8—Br2	120.67 (16)
C12—O3—Cu1 <sup>iv</sup>	117.81 (13)	C8—C9—C10	117.44 (19)
C12—O4—Cu1 <sup>v</sup>	127.10 (14)	C8—C9—H9	121.3
C1—N1—C5	117.7 (2)	C10—C9—H9	121.3
C11—N2—C7	118.33 (18)	C9—C10—C11	119.06 (18)
C11—N2—Cu1	117.85 (14)	C9—C10—C12	122.30 (18)
C7—N2—Cu1	123.76 (14)	C11—C10—C12	118.57 (17)
N1—C1—C2	122.4 (2)	N2—C11—C10	122.86 (18)
N1—C1—H1	118.8	N2—C11—H11	118.6
C2—C1—H1	118.8	C10—C11—H11	118.6
C3—C2—C1	120.2 (2)	O3—C12—O4	126.62 (18)
C3—C2—Br1	120.35 (17)	O3—C12—C10	117.99 (18)
C1—C2—Br1	119.44 (15)	O4—C12—C10	115.38 (18)
C2—C3—C4	117.5 (2)		
O2 <sup>i</sup> —Cu1—O1—C6	5.4 (4)	Cu1—O1—C6—C4	178.63 (13)
O4 <sup>ii</sup> —Cu1—O1—C6	-79.30 (16)	C5—C4—C6—O2	-175.55 (19)
O3 <sup>iii</sup> —Cu1—O1—C6	89.08 (16)	C3—C4—C6—O2	5.4 (3)
N2—Cu1—O1—C6	-171.84 (15)	C5—C4—C6—O1	4.8 (3)
Cu1 <sup>i</sup> —Cu1—O1—C6	1.20 (15)	C3—C4—C6—O1	-174.31 (19)
O1—Cu1—N2—C11	-127.00 (15)	C11—N2—C7—C8	0.1 (3)
O2 <sup>i</sup> —Cu1—N2—C11	53.57 (15)	Cu1—N2—C7—C8	177.04 (15)
O4 <sup>ii</sup> —Cu1—N2—C11	142.93 (15)	N2—C7—C8—C9	0.1 (3)
O3 <sup>iii</sup> —Cu1—N2—C11	-35.75 (15)	N2—C7—C8—Br2	178.81 (15)
O1—Cu1—N2—C7	56.05 (17)	C7—C8—C9—C10	0.1 (3)
O2 <sup>i</sup> —Cu1—N2—C7	-123.39 (16)	Br2—C8—C9—C10	-178.61 (14)
O4 <sup>ii</sup> —Cu1—N2—C7	-34.03 (16)	C8—C9—C10—C11	-0.4 (3)
O3 <sup>iii</sup> —Cu1—N2—C7	147.30 (16)	C8—C9—C10—C12	176.54 (18)
C5—N1—C1—C2	-0.7 (3)	C7—N2—C11—C10	-0.5 (3)
N1—C1—C2—C3	0.8 (4)	Cu1—N2—C11—C10	-177.61 (15)
N1—C1—C2—Br1	-179.34 (18)	C9—C10—C11—N2	0.7 (3)
C1—C2—C3—C4	0.1 (3)	C12—C10—C11—N2	-176.43 (18)
Br1—C2—C3—C4	-179.72 (15)	Cu1 <sup>iv</sup> —O3—C12—O4	4.0 (3)



---

C2—C3—C4—C5	-1.1 (3)	Cu1 <sup>iv</sup> —O3—C12—C10	-174.39 (12)
C2—C3—C4—C6	178.03 (19)	Cu1 <sup>v</sup> —O4—C12—O3	-3.7 (3)
C1—N1—C5—C4	-0.3 (3)	Cu1 <sup>v</sup> —O4—C12—C10	174.71 (12)
C3—C4—C5—N1	1.2 (3)	C9—C10—C12—O3	1.3 (3)
C6—C4—C5—N1	-177.9 (2)	C11—C10—C12—O3	178.26 (18)
Cu1 <sup>i</sup> —O2—C6—O1	-0.2 (3)	C9—C10—C12—O4	-177.28 (18)
Cu1 <sup>i</sup> —O2—C6—C4	-179.81 (13)	C11—C10—C12—O4	-0.3 (3)
Cu1—O1—C6—O2	-1.0 (3)		

---

Symmetry codes: (i)  $-x+1, -y+2, -z$ ; (ii)  $-x+3/2, y-1/2, -z+1/2$ ; (iii)  $x-1/2, -y+5/2, z-1/2$ ; (iv)  $x+1/2, -y+5/2, z+1/2$ ; (v)  $-x+3/2, y+1/2, -z+1/2$ .