

Acta Crystallographica Section E

## Structure Reports

Online

ISSN 1600-5368

# 4-Methyl-1-(4-methylbenzylidene)thiosemicarbazide

Yu-Feng Li

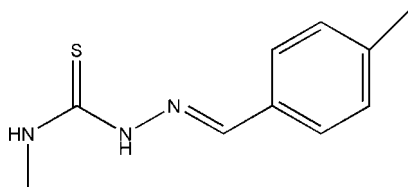
 Microscale Science Institute, Department of Chemistry and Chemical Engineering, Weifang University, Weifang 261061, People's Republic of China  
 Correspondence e-mail: liyufeng8111@163.com

Received 30 September 2010; accepted 11 October 2010

 Key indicators: single-crystal X-ray study;  $T = 293$  K; mean  $\sigma(\text{C}-\text{C}) = 0.003$  Å;  $R$  factor = 0.044;  $wR$  factor = 0.146; data-to-parameter ratio = 20.4.

The title compound,  $\text{C}_{10}\text{H}_{13}\text{N}_3\text{S}$ , prepared by the reaction of 4-methylbenzaldehyde and 4-methylthiosemicarbazide, is approximately planar (r.m.s. deviation for the non-H atoms = 0.032 Å). Its conformation is stabilized by an intramolecular  $\text{N}-\text{H}\cdots\text{N}$  hydrogen bond, generating an  $S(5)$  ring. In the crystal, inversion dimers linked by pairs of  $\text{N}-\text{H}\cdots\text{S}$  hydrogen bonds occur. Further weak  $\text{N}-\text{H}\cdots\text{S}$  links connect the dimers into (100) sheets.

## Related literature

 For related structures, see: Li & Jian (2010); Li *et al.* (2009).


## Experimental

## Crystal data

$\text{C}_{10}\text{H}_{13}\text{N}_3\text{S}$	$V = 1137.1(4) \text{ \AA}^3$
$M_r = 207.29$	$Z = 4$
Monoclinic, $P2_1/c$	Mo $K\alpha$ radiation
$a = 9.1139(18) \text{ \AA}$	$\mu = 0.25 \text{ mm}^{-1}$
$b = 13.689(3) \text{ \AA}$	$T = 293 \text{ K}$
$c = 9.1195(18) \text{ \AA}$	$0.25 \times 0.23 \times 0.20 \text{ mm}$
$\beta = 91.92(3)^\circ$	

## Data collection

Bruker SMART CCD diffractometer	2585 independent reflections
10620 measured reflections	1739 reflections with $I > 2\sigma(I)$
	$R_{\text{int}} = 0.030$

## Refinement

$R[F^2 > 2\sigma(F^2)] = 0.044$	127 parameters
$wR(F^2) = 0.146$	H-atom parameters constrained
$S = 1.14$	$\Delta\rho_{\text{max}} = 0.28 \text{ e \AA}^{-3}$
2585 reflections	$\Delta\rho_{\text{min}} = -0.19 \text{ e \AA}^{-3}$

Table 1

Hydrogen-bond geometry (Å, °).

$D-\text{H}\cdots A$	$D-\text{H}$	$\text{H}\cdots A$	$D\cdots A$	$D-\text{H}\cdots A$
$\text{N1}-\text{H1A}\cdots\text{N3}$	0.86	2.27	2.644 (2)	107
$\text{N1}-\text{H1A}\cdots\text{S1}^{\text{i}}$	0.86	2.89	3.4869 (16)	128
$\text{N2}-\text{H2A}\cdots\text{S1}^{\text{ii}}$	0.86	2.57	3.4205 (18)	171

 Symmetry codes: (i)  $x, -y + \frac{1}{2}, z - \frac{1}{2}$ ; (ii)  $-x + 1, -y, -z + 2$ .

Data collection: *SMART* (Bruker, 1997); cell refinement: *SAINTE* (Bruker, 1997); data reduction: *SAINTE*; program(s) used to solve structure: *SHELXS97* (Sheldrick, 2008); program(s) used to refine structure: *SHELXL97* (Sheldrick, 2008); molecular graphics: *SHELXTL* (Sheldrick, 2008); software used to prepare material for publication: *SHELXTL*.

Supplementary data and figures for this paper are available from the IUCr electronic archives (Reference: HB5666).

## References

- Bruker (1997). *SMART* and *SAINTE*. Bruker AXS, Inc., Madison, Wisconsin, USA.  
 Li, Y.-F. & Jian, F.-F. (2010). *Acta Cryst.* **E66**, o1397.  
 Li, Y.-F., Liu, H.-X. & Jian, F.-F. (2009). *Acta Cryst.* **E65**, o2959.  
 Sheldrick, G. M. (2008). *Acta Cryst.* **A64**, 112–122.

## supporting information

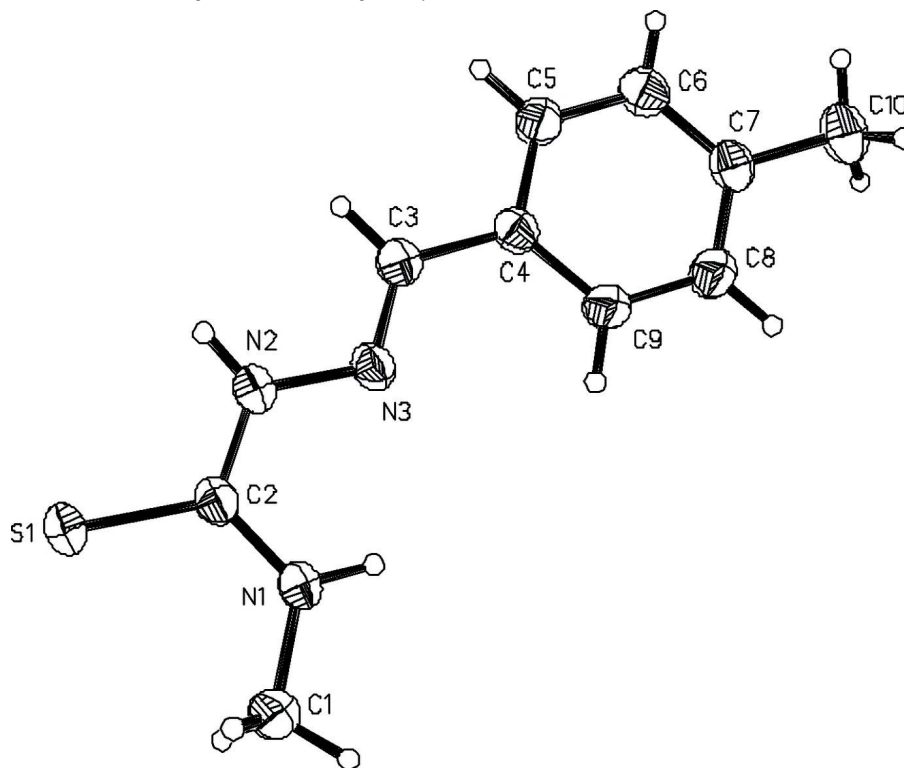
*Acta Cryst.* (2010). E66, o2853 [https://doi.org/10.1107/S1600536810040663]

**4-Methyl-1-(4-methylbenzylidene)thiosemicarbazide****Yu-Feng Li****S1. Experimental**

A mixture of the 4-methylbenzaldehyde (0.10 mol) and 4-methylthiosemicarbazide (0.10 mol) was stirred in refluxing ethanol (10 mL) for 4 h to afford the title compound (0.078 mol, yield 78%). Colourless bars of (I) were obtained by recrystallization from ethanol at room temperature.

**S2. Refinement**

H atoms were fixed geometrically and allowed to ride on their attached atoms, with C—H distances = 0.93–0.97 Å; N—H = 0.86 Å and with  $U_{\text{iso}}(\text{H}) = 1.2U_{\text{eq}}(\text{C}, \text{N})$  or  $1.5U_{\text{eq}}(\text{C}_{\text{methyl}})$ .

**Figure 1**

The structure of (I) showing 30% probability displacement ellipsoids.

## 4-Methyl-1-(4-methylbenzylidene)thiosemicarbazide

## Crystal data

C<sub>10</sub>H<sub>13</sub>N<sub>3</sub>S $M_r = 207.29$ Monoclinic,  $P2_1/c$ 

Hall symbol: -P 2ybc

 $a = 9.1139 (18) \text{ \AA}$  $b = 13.689 (3) \text{ \AA}$  $c = 9.1195 (18) \text{ \AA}$  $\beta = 91.92 (3)^\circ$  $V = 1137.1 (4) \text{ \AA}^3$  $Z = 4$  $F(000) = 440$  $D_x = 1.211 \text{ Mg m}^{-3}$ Mo  $K\alpha$  radiation,  $\lambda = 0.71073 \text{ \AA}$ 

Cell parameters from 1840 reflections

 $\theta = 3.3\text{--}25.2^\circ$  $\mu = 0.25 \text{ mm}^{-1}$  $T = 293 \text{ K}$ 

Bar, colorless

 $0.25 \times 0.23 \times 0.20 \text{ mm}$ 

## Data collection

Bruker SMART CCD

diffractometer

Radiation source: fine-focus sealed tube

Graphite monochromator

 $\phi$  and  $\omega$  scans

10620 measured reflections

2585 independent reflections

1739 reflections with  $I > 2\sigma(I)$  $R_{\text{int}} = 0.030$  $\theta_{\text{max}} = 27.5^\circ$ ,  $\theta_{\text{min}} = 3.5^\circ$  $h = -11 \rightarrow 11$  $k = -16 \rightarrow 17$  $l = -11 \rightarrow 11$ 

## Refinement

Refinement on  $F^2$ 

Least-squares matrix: full

 $R[F^2 > 2\sigma(F^2)] = 0.044$  $wR(F^2) = 0.146$  $S = 1.14$ 

2585 reflections

127 parameters

0 restraints

Primary atom site location: structure-invariant

direct methods

Secondary atom site location: difference Fourier map

Hydrogen site location: inferred from neighbouring sites

H-atom parameters constrained

 $w = 1/[\sigma^2(F_o^2) + (0.0782P)^2 + 0.0376P]$ where  $P = (F_o^2 + 2F_c^2)/3$  $(\Delta/\sigma)_{\text{max}} = 0.001$  $\Delta\rho_{\text{max}} = 0.28 \text{ e \AA}^{-3}$  $\Delta\rho_{\text{min}} = -0.19 \text{ e \AA}^{-3}$ 

## Special details

**Geometry.** All e.s.d.'s (except the e.s.d. in the dihedral angle between two l.s. planes) are estimated using the full covariance matrix. The cell e.s.d.'s are taken into account individually in the estimation of e.s.d.'s in distances, angles and torsion angles; correlations between e.s.d.'s in cell parameters are only used when they are defined by crystal symmetry. An approximate (isotropic) treatment of cell e.s.d.'s is used for estimating e.s.d.'s involving l.s. planes.

**Refinement.** Refinement of  $F^2$  against ALL reflections. The weighted  $R$ -factor  $wR$  and goodness of fit  $S$  are based on  $F^2$ , conventional  $R$ -factors  $R$  are based on  $F$ , with  $F$  set to zero for negative  $F^2$ . The threshold expression of  $F^2 > \sigma(F^2)$  is used only for calculating  $R$ -factors(gt) etc. and is not relevant to the choice of reflections for refinement.  $R$ -factors based on  $F^2$  are statistically about twice as large as those based on  $F$ , and  $R$ -factors based on ALL data will be even larger.

Fractional atomic coordinates and isotropic or equivalent isotropic displacement parameters ( $\text{\AA}^2$ )

	$x$	$y$	$z$	$U_{\text{iso}}^*/U_{\text{eq}}$
S1	0.32325 (7)	0.10479 (4)	1.03876 (5)	0.0635 (2)
N3	0.52576 (18)	0.10902 (11)	0.66835 (16)	0.0500 (4)
N2	0.48287 (19)	0.08528 (11)	0.80716 (16)	0.0546 (4)
H2A	0.5276	0.0396	0.8555	0.065*
N1	0.30549 (18)	0.20245 (12)	0.78748 (16)	0.0577 (4)

H1A	0.3375	0.2139	0.7015	0.069*
C2	0.3712 (2)	0.13330 (14)	0.86754 (17)	0.0480 (4)
C4	0.6920 (2)	0.08023 (14)	0.47593 (18)	0.0484 (4)
C7	0.8095 (2)	0.11507 (15)	0.1996 (2)	0.0549 (5)
C3	0.6335 (2)	0.06052 (14)	0.6196 (2)	0.0536 (5)
H3B	0.6757	0.0113	0.6774	0.064*
C9	0.6309 (2)	0.14953 (15)	0.3821 (2)	0.0603 (5)
H9A	0.5496	0.1851	0.4103	0.072*
C5	0.8110 (2)	0.02762 (16)	0.4281 (2)	0.0612 (5)
H5A	0.8527	-0.0204	0.4883	0.073*
C6	0.8688 (2)	0.04527 (18)	0.2926 (2)	0.0656 (6)
H6A	0.9493	0.0093	0.2636	0.079*
C8	0.6893 (3)	0.16642 (16)	0.2469 (2)	0.0640 (6)
H8A	0.6467	0.2137	0.1859	0.077*
C10	0.8716 (3)	0.1343 (2)	0.0510 (2)	0.0766 (7)
H10A	0.9542	0.0921	0.0370	0.115*
H10B	0.9026	0.2012	0.0454	0.115*
H10C	0.7976	0.1217	-0.0240	0.115*
C1	0.1832 (3)	0.2597 (2)	0.8363 (3)	0.0953 (10)
H1B	0.1537	0.3053	0.7611	0.143*
H1C	0.2121	0.2946	0.9239	0.143*
H1D	0.1026	0.2171	0.8564	0.143*

*Atomic displacement parameters (Å<sup>2</sup>)*

	$U^{11}$	$U^{22}$	$U^{33}$	$U^{12}$	$U^{13}$	$U^{23}$
S1	0.0813 (4)	0.0682 (4)	0.0421 (3)	0.0139 (3)	0.0186 (2)	0.00603 (19)
N3	0.0541 (10)	0.0515 (9)	0.0452 (8)	-0.0020 (7)	0.0137 (7)	0.0010 (6)
N2	0.0613 (11)	0.0587 (9)	0.0444 (8)	0.0068 (8)	0.0135 (7)	0.0048 (6)
N1	0.0608 (11)	0.0644 (10)	0.0491 (8)	0.0117 (8)	0.0193 (7)	0.0127 (7)
C2	0.0525 (11)	0.0490 (10)	0.0430 (9)	-0.0033 (8)	0.0081 (7)	-0.0011 (7)
C4	0.0456 (11)	0.0519 (10)	0.0481 (10)	-0.0013 (8)	0.0075 (7)	-0.0004 (7)
C7	0.0503 (12)	0.0649 (12)	0.0501 (10)	-0.0083 (9)	0.0095 (8)	0.0013 (8)
C3	0.0548 (12)	0.0547 (11)	0.0517 (10)	0.0023 (9)	0.0086 (8)	0.0040 (8)
C9	0.0606 (14)	0.0608 (13)	0.0605 (12)	0.0157 (10)	0.0146 (9)	0.0079 (9)
C5	0.0540 (13)	0.0715 (13)	0.0586 (11)	0.0135 (10)	0.0102 (8)	0.0107 (9)
C6	0.0510 (13)	0.0826 (15)	0.0644 (12)	0.0124 (10)	0.0180 (9)	0.0041 (10)
C8	0.0682 (15)	0.0639 (13)	0.0603 (11)	0.0094 (10)	0.0104 (9)	0.0147 (9)
C10	0.0778 (17)	0.0945 (17)	0.0587 (13)	-0.0095 (14)	0.0226 (11)	0.0069 (11)
C1	0.096 (2)	0.108 (2)	0.0849 (16)	0.0483 (16)	0.0451 (14)	0.0415 (14)

*Geometric parameters (Å, °)*

S1—C2	1.6813 (17)	C3—H3B	0.9300
N3—C3	1.277 (2)	C9—C8	1.378 (3)
N3—N2	1.376 (2)	C9—H9A	0.9300
N2—C2	1.345 (2)	C5—C6	1.381 (3)
N2—H2A	0.8600	C5—H5A	0.9300

N1—C2	1.326 (2)	C6—H6A	0.9300
N1—C1	1.444 (3)	C8—H8A	0.9300
N1—H1A	0.8600	C10—H10A	0.9600
C4—C9	1.382 (3)	C10—H10B	0.9600
C4—C5	1.385 (3)	C10—H10C	0.9600
C4—C3	1.456 (2)	C1—H1B	0.9600
C7—C6	1.376 (3)	C1—H1C	0.9600
C7—C8	1.383 (3)	C1—H1D	0.9600
C7—C10	1.509 (2)		
C3—N3—N2	116.28 (16)	C6—C5—C4	121.15 (18)
C2—N2—N3	120.22 (16)	C6—C5—H5A	119.4
C2—N2—H2A	119.9	C4—C5—H5A	119.4
N3—N2—H2A	119.9	C7—C6—C5	121.32 (19)
C2—N1—C1	123.79 (16)	C7—C6—H6A	119.3
C2—N1—H1A	118.1	C5—C6—H6A	119.3
C1—N1—H1A	118.1	C9—C8—C7	121.85 (19)
N1—C2—N2	117.22 (15)	C9—C8—H8A	119.1
N1—C2—S1	123.41 (14)	C7—C8—H8A	119.1
N2—C2—S1	119.37 (14)	C7—C10—H10A	109.5
C9—C4—C5	117.71 (17)	C7—C10—H10B	109.5
C9—C4—C3	122.18 (17)	H10A—C10—H10B	109.5
C5—C4—C3	120.09 (17)	C7—C10—H10C	109.5
C6—C7—C8	117.33 (18)	H10A—C10—H10C	109.5
C6—C7—C10	121.6 (2)	H10B—C10—H10C	109.5
C8—C7—C10	121.1 (2)	N1—C1—H1B	109.5
N3—C3—C4	121.71 (18)	N1—C1—H1C	109.5
N3—C3—H3B	119.1	H1B—C1—H1C	109.5
C4—C3—H3B	119.1	N1—C1—H1D	109.5
C8—C9—C4	120.63 (18)	H1B—C1—H1D	109.5
C8—C9—H9A	119.7	H1C—C1—H1D	109.5
C4—C9—H9A	119.7		

Hydrogen-bond geometry ( $\text{\AA}$ ,  $^\circ$ )

$D-H\cdots A$	$D-H$	$H\cdots A$	$D\cdots A$	$D-H\cdots A$
N1—H1A $\cdots$ N3	0.86	2.27	2.644 (2)	107
N1—H1A $\cdots$ S1 <sup>i</sup>	0.86	2.89	3.4869 (16)	128
N2—H2A $\cdots$ S1 <sup>ii</sup>	0.86	2.57	3.4205 (18)	171

Symmetry codes: (i)  $x, -y+1/2, z-1/2$ ; (ii)  $-x+1, -y, -z+2$ .