

Acta Crystallographica Section E

## Structure Reports

Online

ISSN 1600-5368

## 4-Nitroaniline–2,4,6-trimethoxybenzaldehyde (1/1)

 Abdullah M. Asiri,<sup>a</sup> Salman A. Khan,<sup>a</sup> Kong Wai Tan<sup>b</sup> and Seik Weng Ng<sup>b\*</sup>
<sup>a</sup>Chemistry Department, Faculty of Science, King Abdul Aziz University, PO Box 80203, Jeddah 21589, Saudi Arabia, and <sup>b</sup>Department of Chemistry, University of Malaya, 50603 Kuala Lumpur, Malaysia

Correspondence e-mail: seikweng@um.edu.my

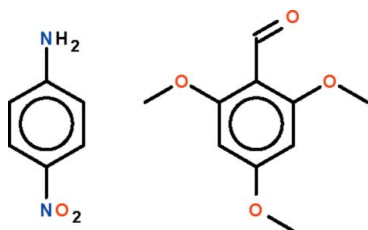
Received 15 June 2010; accepted 18 June 2010

 Key indicators: single-crystal X-ray study;  $T = 100$  K; mean  $\sigma(\text{C}-\text{C}) = 0.003$  Å;  $R$  factor = 0.049;  $wR$  factor = 0.124; data-to-parameter ratio = 12.3.

In the title co-crystal,  $\text{C}_6\text{H}_6\text{N}_2\text{O}_2 \cdot \text{C}_{10}\text{H}_{12}\text{O}_4$ , the two components are held together by an  $\text{N}-\text{H} \cdots \text{O}_{\text{aldehyde}}$  hydrogen bond. Adjacent co-crystals are linked by weaker  $\text{N}-\text{H} \cdots \text{O}_{\text{nitro}}$  hydrogen bonds, forming a linear chain. The two aromatic rings of the components are aligned at  $75.2(1)^\circ$ . The crystal studied was a non-merohedral twin with a 24% minor component.

### Related literature

For some examples of co-crystals of 4-nitroaniline, see: Bertolasi *et al.* (2001); Dederer & Gieren (1979); Huang *et al.* (1996); Koshima *et al.* (1996); Rashid & Deschamps (2006); Singh *et al.* (2003); Smith *et al.* (1997); Weber (1981); Zaitu *et al.* (1995). For the treatment of non-merohedral twins, see: Spek (2009).



### Experimental

#### Crystal data

 $\text{C}_6\text{H}_6\text{N}_2\text{O}_2 \cdot \text{C}_{10}\text{H}_{12}\text{O}_4$ 
 $M_r = 334.32$ 

 Monoclinic,  $P2_1/c$   
 $a = 7.4409(11)$  Å  
 $b = 30.022(5)$  Å  
 $c = 6.9400(11)$  Å  
 $\beta = 93.237(3)^\circ$   
 $V = 1547.9(4)$  Å<sup>3</sup>
 $Z = 4$   
 Mo  $K\alpha$  radiation  
 $\mu = 0.11$  mm<sup>-1</sup>  
 $T = 100$  K  
 $0.15 \times 0.10 \times 0.05$  mm

#### Data collection

 Bruker SMART APEX  
 diffractometer  
 8127 measured reflections

 2722 independent reflections  
 1834 reflections with  $I > 2\sigma(I)$   
 $R_{\text{int}} = 0.059$ 

#### Refinement

 $R[F^2 > 2\sigma(F^2)] = 0.049$   
 $wR(F^2) = 0.124$   
 $S = 1.01$   
 2722 reflections

 221 parameters  
 H-atom parameters constrained  
 $\Delta\rho_{\text{max}} = 0.22$  e Å<sup>-3</sup>  
 $\Delta\rho_{\text{min}} = -0.41$  e Å<sup>-3</sup>
**Table 1**

Hydrogen-bond geometry (Å, °).

$D-\text{H} \cdots A$	$D-\text{H}$	$\text{H} \cdots A$	$D \cdots A$	$D-\text{H} \cdots A$
$\text{N1}-\text{H12} \cdots \text{O1}$	0.86	2.16	3.016 (3)	172
$\text{N1}-\text{H11} \cdots \text{O5}^i$	0.86	2.50	3.288 (3)	152
$\text{N1}-\text{H11} \cdots \text{O6}^i$	0.86	2.50	3.293 (3)	154

 Symmetry code: (i)  $x + 1, -y + \frac{1}{2}, z + \frac{1}{2}$ .

Data collection: *APEX2* (Bruker, 2009); cell refinement: *SAINT* (Bruker, 2009); data reduction: *SAINT*; program(s) used to solve structure: *SHELXS97* (Sheldrick, 2008); program(s) used to refine structure: *SHELXL97* (Sheldrick, 2008); molecular graphics: *X-SEED* (Barbour, 2001); software used to prepare material for publication: *publCIF* (Westrip, 2010).

We thank King Abdul Aziz University and the University of Malaya for supporting this study.

Supplementary data and figures for this paper are available from the IUCr electronic archives (Reference: SI2271).

### References

- Barbour, L. J. (2001). *J. Supramol. Chem.* **1**, 189–191.  
 Bertolasi, V., Gilli, P., Ferretti, V. & Gilli, G. (2001). *New J. Chem.* **25**, 408–415.  
 Bruker (2009). *APEX2* and *SAINT*. Bruker AXS Inc., Madison, Wisconsin, USA.  
 Dederer, B. & Gieren, A. (1979). *Naturwissenschaften*, **66**, 470–471.  
 Huang, K.-S., Britton, D. & Etter, M. C. (1996). *Acta Cryst.* **C52**, 2868–2871.  
 Koshima, H., Wang, Y., Matsuura, T., Mizutani, H., Isako, H., Miyahara, I. & Hirostu, K. (1996). *Mol. Cryst. Liq. Cryst.* **279**, 265–274.  
 Rashid, A. N. & Deschamps, J. R. (2006). *J. Mol. Struct.* **787**, 216–219.  
 Sheldrick, G. M. (2008). *Acta Cryst.* **A64**, 112–122.  
 Singh, N. B., Pathak, A. & Frohlich, R. (2003). *Aust. J. Chem.* **56**, 329–333.  
 Smith, G., Lynch, D. E., Byriel, K. A. & Kennard, C. H. L. (1997). *J. Chem. Crystallogr.* **27**, 307–317.  
 Spek, A. L. (2009). *Acta Cryst.* **D65**, 148–155.  
 Weber, G. (1981). *Z. Naturforsch.* **B36**, 896–897.  
 Westrip, S. P. (2010). *J. Appl. Cryst.* Submitted.  
 Zaitu, S., Miwa, Y. & Taga, T. (1995). *Acta Cryst.* **C51**, 2390–2392.

## supporting information

*Acta Cryst.* (2010). E66, o1765 [doi:10.1107/S1600536810023664]

**4-Nitroaniline–2,4,6-trimethoxybenzaldehyde (1/1)**

**Abdullah M. Asiri, Salman A. Khan, Kong Wai Tan and Seik Weng Ng**

**S1. Comment**

Aromatic aldehydes readily condense with aromatic amines to yield Schiff bases. However, 2,4,6-trimethoxybenzaldehyde and 4-nitroaniline reactants did not condense but instead co-crystallized in the attempted synthesis. The condensation probably did not proceed owing to the decreased basicity of the amino group, which is situated opposite the electron-withdrawing nitro group in the aromatic ring. The co-crystal (Scheme I, Fig. 1) has the components linked by an H–N $\cdots$ O hydrogen bond; the two aromatic rings aligned at 75.2 (1)°. Adjacent co-crystals are linked by weaker N–H $\cdots$ O<sub>nitro</sub> hydrogen bonds to form a linear chain.

4-Nitroaniline forms a number of co-crystals with other neutral compounds; for their description, see: Bertolasi *et al.* (2001); Dederer & Gieren (1979); Huang *et al.* (1996); Koshima *et al.* (1996); Rashid & Deschamps (2006); Singh *et al.* (2003); Smith *et al.* (1997); Weber (1981); Zaitu *et al.* (1995).

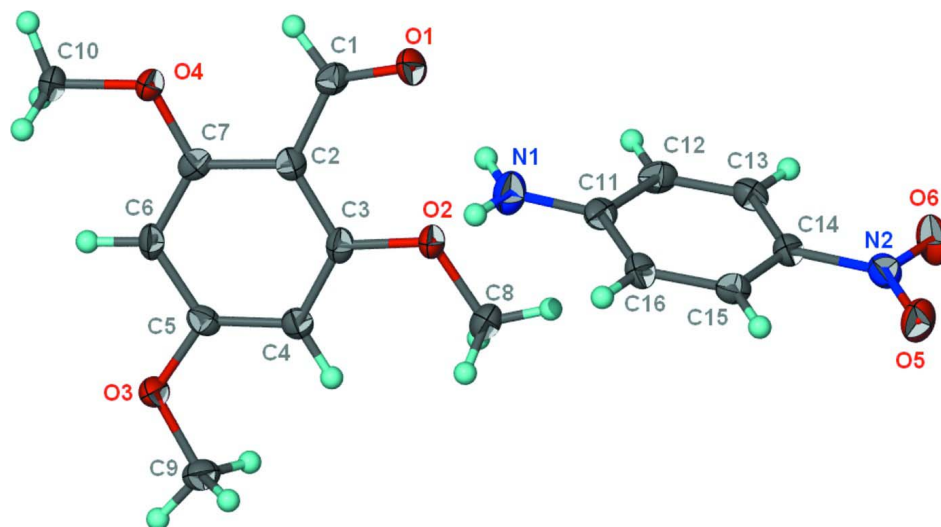
**S2. Experimental**

2,4,6-Trimethoxybenzaldehyde (0.50 g, 3.3 mmol) and 4-nitroaniline (0.57 g, 3.3 mmol) were heated in methanol (15 ml) for 5 h. Yellow crystals separated from the cool solution after a day.

**S3. Refinement**

Carbon- and nitrogen-bound H-atoms were placed in calculated positions [C–H 0.95 to 0.98 Å, N–H 0.86 Å;  $U(\text{H})$  1.2 to  $1.5U_{\text{eq}}(\text{C},\text{N})$ ] and were included in the refinement in the riding model approximation.

The crystal studied is a non-merohedral twin; the twin law (1 0 0.121, 0 - 1 0, 0 0 - 1) as given by *PLATON* (Spek, 2009) was used to de-twin the diffraction data.

**Figure 1**

Thermal ellipsoid plot (Barbour, 2001) of the  $C_6H_6N_2O_2 \cdot C_{10}H_{12}O_4$  co-crystal at the 70% probability level; hydrogen atoms are drawn as spheres of arbitrary radius.

#### 4-Nitroaniline–2,4,6-trimethoxybenzaldehyde (1/1)

##### Crystal data

$C_6H_6N_2O_2 \cdot C_{10}H_{12}O_4$

$M_r = 334.32$

Monoclinic,  $P2_1/c$

Hall symbol:  $-P\ 2_1/c$

$a = 7.4409$  (11) Å

$b = 30.022$  (5) Å

$c = 6.9400$  (11) Å

$\beta = 93.237$  (3)°

$V = 1547.9$  (4) Å<sup>3</sup>

$Z = 4$

$F(000) = 704$

$D_x = 1.435$  Mg m<sup>-3</sup>

Mo  $K\alpha$  radiation,  $\lambda = 0.71073$  Å

Cell parameters from 1019 reflections

$\theta = 2.7$ – $24.4$ °

$\mu = 0.11$  mm<sup>-1</sup>

$T = 100$  K

Prism, yellow

$0.15 \times 0.10 \times 0.05$  mm

##### Data collection

Bruker SMART APEX

diffractometer

Radiation source: fine-focus sealed tube

Graphite monochromator

$\omega$  scans

8127 measured reflections

2722 independent reflections

1834 reflections with  $I > 2\sigma(I)$

$R_{int} = 0.059$

$\theta_{max} = 25.0$ °,  $\theta_{min} = 1.4$ °

$h = -8 \rightarrow 8$

$k = -32 \rightarrow 35$

$l = -8 \rightarrow 8$

##### Refinement

Refinement on  $F^2$

Least-squares matrix: full

$R[F^2 > 2\sigma(F^2)] = 0.049$

$wR(F^2) = 0.124$

$S = 1.01$

2722 reflections

221 parameters

0 restraints

Primary atom site location: structure-invariant direct methods

Secondary atom site location: difference Fourier map

Hydrogen site location: inferred from neighbouring sites

H-atom parameters constrained

$$w = 1/[\sigma^2(F_o^2) + (0.0537P)^2 + 0.141P]$$

where  $P = (F_o^2 + 2F_c^2)/3$   
 $(\Delta/\sigma)_{\max} = 0.001$

$$\Delta\rho_{\max} = 0.22 \text{ e } \text{\AA}^{-3}$$

$$\Delta\rho_{\min} = -0.41 \text{ e } \text{\AA}^{-3}$$

Fractional atomic coordinates and isotropic or equivalent isotropic displacement parameters ( $\text{\AA}^2$ )

	<i>x</i>	<i>y</i>	<i>z</i>	$U_{\text{iso}}^*/U_{\text{eq}}$
O1	0.7019 (2)	0.57392 (6)	0.7861 (3)	0.0238 (5)
O2	0.7670 (2)	0.61120 (6)	0.4418 (2)	0.0182 (4)
O3	1.3371 (2)	0.57367 (6)	0.1850 (2)	0.0203 (4)
O4	1.1646 (2)	0.51253 (6)	0.7725 (2)	0.0176 (4)
O5	0.0363 (2)	0.80574 (6)	0.5273 (3)	0.0266 (5)
O6	-0.0908 (2)	0.74324 (7)	0.4450 (3)	0.0291 (5)
N1	0.6593 (3)	0.67379 (7)	0.7727 (3)	0.0233 (5)
H11	0.7505	0.6884	0.8209	0.028*
H12	0.6631	0.6452	0.7670	0.028*
N2	0.0398 (3)	0.76456 (7)	0.5159 (3)	0.0193 (5)
C1	0.8433 (3)	0.55435 (8)	0.7589 (4)	0.0177 (6)
H1	0.8764	0.5314	0.8482	0.021*
C2	0.9658 (3)	0.56212 (8)	0.6066 (3)	0.0152 (6)
C3	0.9285 (3)	0.59010 (8)	0.4462 (4)	0.0154 (6)
C4	1.0482 (3)	0.59515 (8)	0.3011 (4)	0.0155 (6)
H4	1.0203	0.6140	0.1936	0.019*
C5	1.2098 (3)	0.57189 (8)	0.3175 (4)	0.0157 (6)
C6	1.2542 (3)	0.54410 (8)	0.4744 (4)	0.0170 (6)
H6	1.3662	0.5289	0.4834	0.020*
C7	1.1335 (3)	0.53914 (8)	0.6155 (3)	0.0144 (6)
C8	0.7184 (3)	0.63908 (9)	0.2781 (4)	0.0216 (6)
H8A	0.5983	0.6516	0.2923	0.032*
H8B	0.7179	0.6213	0.1597	0.032*
H8C	0.8061	0.6633	0.2709	0.032*
C9	1.3034 (3)	0.60080 (8)	0.0177 (4)	0.0198 (6)
H9A	1.4039	0.5980	-0.0669	0.030*
H9B	1.2913	0.6320	0.0570	0.030*
H9C	1.1920	0.5910	-0.0516	0.030*
C10	1.3340 (3)	0.48903 (9)	0.7879 (4)	0.0193 (6)
H10A	1.3403	0.4709	0.9054	0.029*
H10B	1.4332	0.5106	0.7934	0.029*
H10C	1.3436	0.4697	0.6751	0.029*
C11	0.5099 (3)	0.69579 (9)	0.7057 (3)	0.0168 (6)
C12	0.3577 (3)	0.67245 (9)	0.6292 (4)	0.0189 (6)
H12A	0.3622	0.6409	0.6183	0.023*
C13	0.2034 (3)	0.69466 (9)	0.5705 (4)	0.0186 (6)
H13	0.1006	0.6786	0.5216	0.022*
C14	0.1986 (3)	0.74094 (8)	0.5832 (4)	0.0165 (6)
C15	0.3483 (3)	0.76498 (8)	0.6542 (3)	0.0162 (6)
H15	0.3440	0.7966	0.6610	0.019*
C16	0.5015 (3)	0.74254 (9)	0.7139 (4)	0.0176 (6)

H16                    0.6040                    0.7588                    0.7617                    0.021\*

*Atomic displacement parameters (Å<sup>2</sup>)*

	$U^{11}$	$U^{22}$	$U^{33}$	$U^{12}$	$U^{13}$	$U^{23}$
O1	0.0193 (10)	0.0228 (11)	0.0302 (11)	0.0076 (8)	0.0082 (8)	0.0052 (9)
O2	0.0152 (9)	0.0201 (10)	0.0195 (10)	0.0065 (8)	0.0028 (7)	0.0045 (8)
O3	0.0188 (10)	0.0228 (11)	0.0200 (10)	0.0060 (8)	0.0070 (8)	0.0085 (8)
O4	0.0163 (9)	0.0172 (10)	0.0195 (10)	0.0054 (7)	0.0023 (7)	0.0049 (8)
O5	0.0257 (11)	0.0204 (12)	0.0337 (12)	0.0076 (9)	0.0015 (8)	0.0010 (9)
O6	0.0173 (10)	0.0360 (13)	0.0332 (12)	-0.0005 (9)	-0.0068 (9)	-0.0050 (10)
N1	0.0213 (12)	0.0170 (13)	0.0311 (13)	0.0035 (10)	-0.0030 (10)	-0.0009 (11)
N2	0.0183 (12)	0.0219 (14)	0.0178 (12)	0.0011 (10)	0.0028 (9)	-0.0001 (10)
C1	0.0207 (14)	0.0123 (14)	0.0201 (14)	0.0010 (12)	0.0005 (11)	0.0014 (11)
C2	0.0160 (13)	0.0131 (14)	0.0165 (13)	-0.0013 (10)	0.0012 (10)	-0.0016 (11)
C3	0.0133 (13)	0.0136 (14)	0.0189 (13)	0.0016 (11)	-0.0017 (10)	-0.0027 (11)
C4	0.0157 (13)	0.0139 (14)	0.0171 (13)	-0.0008 (10)	0.0015 (10)	-0.0010 (11)
C5	0.0154 (13)	0.0147 (14)	0.0174 (13)	-0.0017 (11)	0.0039 (10)	-0.0015 (11)
C6	0.0136 (13)	0.0142 (14)	0.0230 (14)	0.0022 (11)	-0.0003 (11)	0.0002 (11)
C7	0.0190 (14)	0.0098 (14)	0.0141 (13)	-0.0002 (10)	-0.0012 (10)	-0.0018 (11)
C8	0.0207 (14)	0.0211 (16)	0.0227 (14)	0.0046 (12)	-0.0017 (11)	0.0062 (12)
C9	0.0239 (15)	0.0173 (15)	0.0185 (14)	0.0015 (11)	0.0035 (11)	0.0044 (12)
C10	0.0148 (13)	0.0199 (15)	0.0230 (14)	0.0057 (11)	0.0004 (11)	0.0045 (12)
C11	0.0205 (14)	0.0186 (15)	0.0118 (13)	0.0037 (11)	0.0052 (11)	-0.0005 (11)
C12	0.0246 (14)	0.0121 (14)	0.0200 (14)	-0.0020 (12)	0.0025 (11)	0.0003 (11)
C13	0.0175 (14)	0.0218 (16)	0.0166 (14)	-0.0044 (12)	0.0029 (11)	-0.0013 (12)
C14	0.0154 (13)	0.0175 (15)	0.0168 (13)	0.0009 (11)	0.0011 (10)	0.0009 (11)
C15	0.0212 (14)	0.0122 (14)	0.0158 (13)	-0.0003 (11)	0.0056 (11)	-0.0014 (11)
C16	0.0165 (13)	0.0210 (16)	0.0152 (13)	0.0000 (11)	0.0011 (11)	-0.0023 (11)

*Geometric parameters (Å, °)*

O1—C1	1.229 (3)	C6—C7	1.374 (3)
O2—C3	1.357 (3)	C6—H6	0.9500
O2—C8	1.441 (3)	C8—H8A	0.9800
O3—C5	1.358 (3)	C8—H8B	0.9800
O3—C9	1.428 (3)	C8—H8C	0.9800
O4—C7	1.360 (3)	C9—H9A	0.9800
O4—C10	1.444 (3)	C9—H9B	0.9800
O5—N2	1.239 (3)	C9—H9C	0.9800
O6—N2	1.242 (3)	C10—H10A	0.9800
N1—C11	1.352 (3)	C10—H10B	0.9800
N1—H11	0.8600	C10—H10C	0.9800
N1—H12	0.8600	C11—C16	1.406 (4)
N2—C14	1.434 (3)	C11—C12	1.410 (3)
C1—C2	1.454 (3)	C12—C13	1.370 (3)
C1—H1	0.9500	C12—H12A	0.9500
C2—C3	1.409 (3)	C13—C14	1.393 (3)

C2—C7	1.424 (3)	C13—H13	0.9500
C3—C4	1.390 (3)	C14—C15	1.394 (3)
C4—C5	1.389 (3)	C15—C16	1.368 (3)
C4—H4	0.9500	C15—H15	0.9500
C5—C6	1.397 (3)	C16—H16	0.9500
C3—O2—C8	118.10 (19)	O2—C8—H8C	109.5
C5—O3—C9	118.39 (19)	H8A—C8—H8C	109.5
C7—O4—C10	117.03 (19)	H8B—C8—H8C	109.5
C11—N1—H11	120.0	O3—C9—H9A	109.5
C11—N1—H12	120.0	O3—C9—H9B	109.5
H11—N1—H12	120.0	H9A—C9—H9B	109.5
O5—N2—O6	121.4 (2)	O3—C9—H9C	109.5
O5—N2—C14	119.5 (2)	H9A—C9—H9C	109.5
O6—N2—C14	119.1 (2)	H9B—C9—H9C	109.5
O1—C1—C2	127.8 (2)	O4—C10—H10A	109.5
O1—C1—H1	116.1	O4—C10—H10B	109.5
C2—C1—H1	116.1	H10A—C10—H10B	109.5
C3—C2—C7	117.2 (2)	O4—C10—H10C	109.5
C3—C2—C1	124.5 (2)	H10A—C10—H10C	109.5
C7—C2—C1	118.3 (2)	H10B—C10—H10C	109.5
O2—C3—C4	122.4 (2)	N1—C11—C16	120.7 (2)
O2—C3—C2	115.5 (2)	N1—C11—C12	120.9 (2)
C4—C3—C2	122.1 (2)	C16—C11—C12	118.3 (2)
C3—C4—C5	118.2 (2)	C13—C12—C11	120.8 (2)
C3—C4—H4	120.9	C13—C12—H12A	119.6
C5—C4—H4	120.9	C11—C12—H12A	119.6
O3—C5—C4	123.9 (2)	C12—C13—C14	119.4 (2)
O3—C5—C6	114.1 (2)	C12—C13—H13	120.3
C4—C5—C6	122.0 (2)	C14—C13—H13	120.3
C7—C6—C5	119.0 (2)	C15—C14—C13	121.1 (2)
C7—C6—H6	120.5	C15—C14—N2	119.1 (2)
C5—C6—H6	120.5	C13—C14—N2	119.7 (2)
O4—C7—C6	123.1 (2)	C16—C15—C14	119.2 (2)
O4—C7—C2	115.4 (2)	C16—C15—H15	120.4
C6—C7—C2	121.5 (2)	C14—C15—H15	120.4
O2—C8—H8A	109.5	C15—C16—C11	121.2 (2)
O2—C8—H8B	109.5	C15—C16—H16	119.4
H8A—C8—H8B	109.5	C11—C16—H16	119.4
O1—C1—C2—C3	-9.3 (4)	C5—C6—C7—C2	-0.9 (4)
O1—C1—C2—C7	172.5 (2)	C3—C2—C7—O4	179.9 (2)
C8—O2—C3—C4	1.2 (3)	C1—C2—C7—O4	-1.8 (3)
C8—O2—C3—C2	-177.9 (2)	C3—C2—C7—C6	0.2 (3)
C7—C2—C3—O2	179.5 (2)	C1—C2—C7—C6	178.6 (2)
C1—C2—C3—O2	1.3 (4)	N1—C11—C12—C13	176.7 (2)
C7—C2—C3—C4	0.5 (3)	C16—C11—C12—C13	-2.2 (4)
C1—C2—C3—C4	-177.7 (2)	C11—C12—C13—C14	1.3 (4)

O2—C3—C4—C5	-179.5 (2)	C12—C13—C14—C15	0.2 (4)
C2—C3—C4—C5	-0.5 (4)	C12—C13—C14—N2	177.8 (2)
C9—O3—C5—C4	-0.4 (3)	O5—N2—C14—C15	-2.2 (3)
C9—O3—C5—C6	179.3 (2)	O6—N2—C14—C15	176.9 (2)
C3—C4—C5—O3	179.4 (2)	O5—N2—C14—C13	-179.9 (2)
C3—C4—C5—C6	-0.2 (4)	O6—N2—C14—C13	-0.8 (3)
O3—C5—C6—C7	-178.8 (2)	C13—C14—C15—C16	-0.6 (4)
C4—C5—C6—C7	0.9 (4)	N2—C14—C15—C16	-178.3 (2)
C10—O4—C7—C6	0.3 (3)	C14—C15—C16—C11	-0.3 (4)
C10—O4—C7—C2	-179.4 (2)	N1—C11—C16—C15	-177.2 (2)
C5—C6—C7—O4	179.5 (2)	C12—C11—C16—C15	1.7 (4)

*Hydrogen-bond geometry (Å, °)*

<i>D</i> —H... <i>A</i>	<i>D</i> —H	H... <i>A</i>	<i>D</i> ... <i>A</i>	<i>D</i> —H... <i>A</i>
N1—H12...O1	0.86	2.16	3.016 (3)	172
N1—H11...O5 <sup>i</sup>	0.86	2.50	3.288 (3)	152
N1—H11...O6 <sup>i</sup>	0.86	2.50	3.293 (3)	154

Symmetry code: (i)  $x+1, -y+3/2, z+1/2$ .