

Acta Crystallographica Section E

Structure Reports

Online

ISSN 1600-5368

2-[(2-Hydroxy-4-methoxybenzylidene)-azaniumyl]benzoate monohydrate

Zhi-Xi Hang,^{a*} Bo Dong^b and Xing-Wen Wang^c

^aCollege of Biological and Chemical Engineering, Anhui Polytechnic University, Wuhu 241000, People's Republic of China, ^bCollege of Chemical Engineering, Nanjing Forestry University, Nanjing 210037, People's Republic of China, and ^cDepartment of Biological and Environmental Engineering, Hefei University, Hefei 230022, People's Republic of China

Correspondence e-mail: hangzx@163.com

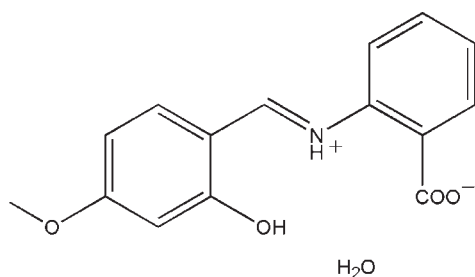
Received 18 June 2010; accepted 20 June 2010

Key indicators: single-crystal X-ray study; $T = 298$ K; mean $\sigma(\text{C}-\text{C}) = 0.003$ Å; R factor = 0.043; wR factor = 0.122; data-to-parameter ratio = 13.8.

In the title compound, $\text{C}_{15}\text{H}_{13}\text{NO}_4 \cdot \text{H}_2\text{O}$, the Schiff base exists in a zwitterionic form and a bifurcated intramolecular $\text{N}-\text{H} \cdots (\text{O}, \text{O})$ hydrogen bond generates two $S(6)$ rings. The dihedral angle between the two benzene rings is $25.8(2)^\circ$. The crystal structure is stabilized by intermolecular $\text{O}-\text{H} \cdots \text{O}$ hydrogen bonds.

Related literature

For a related compound and background references to Schiff bases, see: Hang (2010). For related structures, see: Alpaslan *et al.* (2010a,b); Aritake *et al.* (2010); Bahron *et al.* (2010).



Experimental

Crystal data

$\text{C}_{15}\text{H}_{13}\text{NO}_4 \cdot \text{H}_2\text{O}$
 $M_r = 289.28$
 Triclinic, $P\bar{1}$
 $a = 8.7240(5)$ Å
 $b = 8.9252(4)$ Å

$c = 10.7967(5)$ Å
 $\alpha = 111.312(2)^\circ$
 $\beta = 93.084(3)^\circ$
 $\gamma = 117.500(2)^\circ$
 $V = 669.24(6)$ Å³

$Z = 2$
 Mo $K\alpha$ radiation
 $\mu = 0.11$ mm⁻¹

$T = 298$ K
 $0.30 \times 0.28 \times 0.28$ mm

Data collection

Bruker SMART CCD diffractometer
 Absorption correction: multi-scan (SADABS; Sheldrick, 1996)
 $T_{\min} = 0.968$, $T_{\max} = 0.970$

4045 measured reflections
 2810 independent reflections
 1992 reflections with $I > 2\sigma(I)$
 $R_{\text{int}} = 0.013$

Refinement

$R[F^2 > 2\sigma(F^2)] = 0.043$
 $wR(F^2) = 0.122$
 $S = 1.08$
 2810 reflections
 203 parameters
 5 restraints

H atoms treated by a mixture of independent and constrained refinement
 $\Delta\rho_{\text{max}} = 0.15$ e Å⁻³
 $\Delta\rho_{\text{min}} = -0.18$ e Å⁻³

Table 1

Hydrogen-bond geometry (Å, °).

$D-\text{H} \cdots A$	$D-\text{H}$	$\text{H} \cdots A$	$D \cdots A$	$D-\text{H} \cdots A$
$\text{N1}-\text{H1} \cdots \text{O1}$	0.91 (1)	2.14 (2)	2.7257 (17)	121 (2)
$\text{N1}-\text{H1} \cdots \text{O2}$	0.91 (1)	1.88 (2)	2.6366 (17)	139 (2)
$\text{O1}-\text{H1A} \cdots \text{O2}^{\text{ii}}$	0.86 (1)	1.72 (1)	2.5675 (16)	165 (2)
$\text{O5}-\text{H5A} \cdots \text{O3}^{\text{ii}}$	0.85 (1)	2.07 (1)	2.907 (2)	169 (2)
$\text{O5}-\text{H5B} \cdots \text{O3}$	0.86 (1)	1.95 (1)	2.806 (2)	178 (2)

Symmetry codes: (i) $-x + 1, -y, -z$; (ii) $-x + 1, -y, -z + 1$.

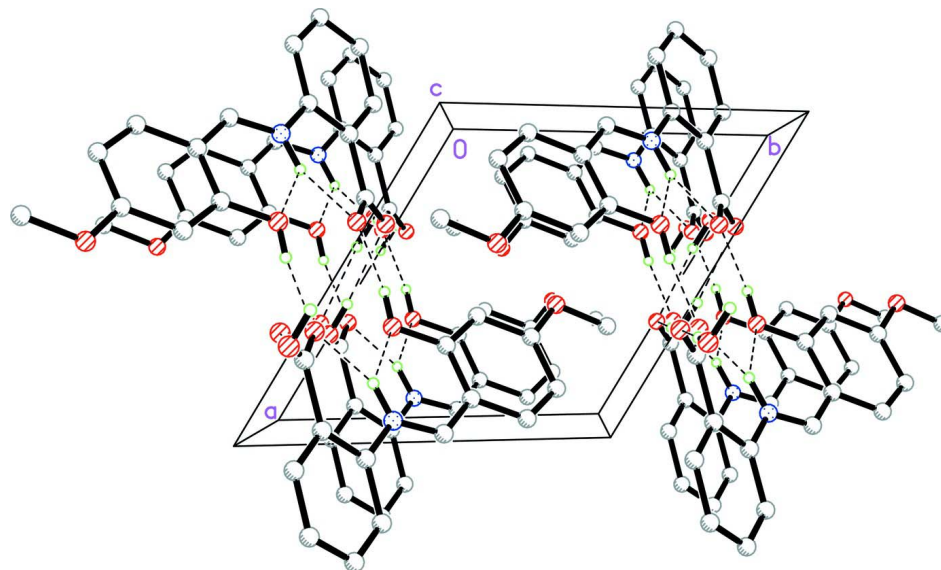
Data collection: SMART (Bruker, 2002); cell refinement: SAINT (Bruker, 2002); data reduction: SAINT; program(s) used to solve structure: SHELXS97 (Sheldrick, 2008); program(s) used to refine structure: SHELXL97 (Sheldrick, 2008); molecular graphics: SHELXTL (Sheldrick, 2008); software used to prepare material for publication: SHELXL97.

The authors acknowledge the Pivot Construction Subject of Applied Chemistry and the Teaching Group of the Courses Construction on Engineering Course Chemistry for financial support.

Supplementary data and figures for this paper are available from the IUCr electronic archives (Reference: HB5506).

References

- Alpaslan, Y. B., Alpaslan, G., Agar, A. & Isik, S. (2010b). *Acta Cryst.* **E66**, o510.
 Alpaslan, G., Macit, M., Büyükgüngör, O. & Erdönmez, A. (2010a). *Acta Cryst.* **E66**, o1178.
 Aritake, Y., Watanabe, Y. & Akitsu, T. (2010). *Acta Cryst.* **E66**, o749.
 Bahron, H., Bakar, S. N. A., Kassim, K., Yeap, C. S. & Fun, H.-K. (2010). *Acta Cryst.* **E66**, o883.
 Bruker (2002). SAINT and SMART. Bruker AXS Inc., Madison, Wisconsin, USA.
 Hang, Z.-X. (2010). *Acta Cryst.* **E66**, o1650.
 Sheldrick, G. M. (1996). SADABS. University of Göttingen, Germany.
 Sheldrick, G. M. (2008). *Acta Cryst.* **A64**, 112–122.

**Figure 2**

The molecular packing of the title compound, viewed along the *c* axis. Hydrogen bonds are drawn as dashed lines.

2-[(2-Hydroxy-4-methoxybenzylidene)azaniumyl]benzoate monohydrate

Crystal data

$C_{15}H_{13}NO_4 \cdot H_2O$

$M_r = 289.28$

Triclinic, $P\bar{1}$

Hall symbol: -P 1

$a = 8.7240$ (5) Å

$b = 8.9252$ (4) Å

$c = 10.7967$ (5) Å

$\alpha = 111.312$ (2)°

$\beta = 93.084$ (3)°

$\gamma = 117.500$ (2)°

$V = 669.24$ (6) Å³

$Z = 2$

$F(000) = 304$

$D_x = 1.436$ Mg m⁻³

Mo $K\alpha$ radiation, $\lambda = 0.71073$ Å

Cell parameters from 1109 reflections

$\theta = 2.6$ – 26.2 °

$\mu = 0.11$ mm⁻¹

$T = 298$ K

Block, colorless

$0.30 \times 0.28 \times 0.28$ mm

Data collection

Bruker SMART CCD

diffractometer

Radiation source: fine-focus sealed tube

Graphite monochromator

ω scans

Absorption correction: multi-scan

(*SADABS*; Sheldrick, 1996)

$T_{\min} = 0.968$, $T_{\max} = 0.970$

4045 measured reflections

2810 independent reflections

1992 reflections with $I > 2\sigma(I)$

$R_{\text{int}} = 0.013$

$\theta_{\max} = 27.0$ °, $\theta_{\min} = 2.1$ °

$h = -6 \rightarrow 11$

$k = -11 \rightarrow 11$

$l = -13 \rightarrow 13$

Refinement

Refinement on F^2

Least-squares matrix: full

$R[F^2 > 2\sigma(F^2)] = 0.043$

$wR(F^2) = 0.122$

$S = 1.08$

2810 reflections

203 parameters

5 restraints

Primary atom site location: structure-invariant
direct methods

Secondary atom site location: difference Fourier
map

Hydrogen site location: inferred from
neighbouring sites

H atoms treated by a mixture of independent
and constrained refinement
 $w = 1/[\sigma^2(F_o^2) + (0.0595P)^2 + 0.0161P]$
where $P = (F_o^2 + 2F_c^2)/3$

$$(\Delta/\sigma)_{\max} < 0.001$$

$$\Delta\rho_{\max} = 0.15 \text{ e } \text{\AA}^{-3}$$

$$\Delta\rho_{\min} = -0.18 \text{ e } \text{\AA}^{-3}$$

Special details

Geometry. All e.s.d.'s (except the e.s.d. in the dihedral angle between two l.s. planes) are estimated using the full covariance matrix. The cell e.s.d.'s are taken into account individually in the estimation of e.s.d.'s in distances, angles and torsion angles; correlations between e.s.d.'s in cell parameters are only used when they are defined by crystal symmetry. An approximate (isotropic) treatment of cell e.s.d.'s is used for estimating e.s.d.'s involving l.s. planes.

Refinement. Refinement of F^2 against ALL reflections. The weighted R -factor wR and goodness of fit S are based on F^2 , conventional R -factors R are based on F , with F set to zero for negative F^2 . The threshold expression of $F^2 > \sigma(F^2)$ is used only for calculating R -factors(gt) *etc.* and is not relevant to the choice of reflections for refinement. R -factors based on F^2 are statistically about twice as large as those based on F , and R -factors based on ALL data will be even larger.

Fractional atomic coordinates and isotropic or equivalent isotropic displacement parameters (\AA^2)

	<i>x</i>	<i>y</i>	<i>z</i>	$U_{\text{iso}}^*/U_{\text{eq}}$
N1	0.91763 (18)	0.38037 (19)	0.21508 (14)	0.0364 (3)
O1	0.65275 (15)	0.22394 (15)	-0.01717 (12)	0.0446 (3)
O2	0.65944 (15)	0.04540 (16)	0.17602 (12)	0.0491 (3)
O3	0.65792 (17)	-0.01967 (18)	0.35525 (13)	0.0611 (4)
O4	0.59187 (15)	0.62901 (16)	-0.17000 (12)	0.0459 (3)
O5	0.68483 (19)	0.0450 (2)	0.63223 (16)	0.0715 (5)
C1	0.8648 (2)	0.5485 (2)	0.10069 (16)	0.0356 (4)
C2	0.7092 (2)	0.3956 (2)	-0.00735 (16)	0.0341 (4)
C3	0.6248 (2)	0.4303 (2)	-0.09650 (16)	0.0364 (4)
H3	0.5244	0.3306	-0.1682	0.044*
C4	0.6884 (2)	0.6120 (2)	-0.07994 (16)	0.0371 (4)
C5	0.8428 (2)	0.7642 (2)	0.02468 (18)	0.0431 (4)
H5	0.8866	0.8859	0.0346	0.052*
C6	0.9272 (2)	0.7302 (2)	0.11142 (18)	0.0430 (4)
H6	1.0301	0.8309	0.1805	0.052*
C7	0.9597 (2)	0.5313 (2)	0.19950 (17)	0.0377 (4)
H7	1.0645	0.6404	0.2605	0.045*
C8	1.0163 (2)	0.3714 (2)	0.31829 (16)	0.0371 (4)
C9	0.9308 (2)	0.2225 (2)	0.35416 (16)	0.0381 (4)
C10	1.0311 (2)	0.2180 (3)	0.45585 (19)	0.0486 (5)
H10	0.9764	0.1205	0.4813	0.058*
C11	1.2094 (3)	0.3539 (3)	0.5200 (2)	0.0542 (5)
H11	1.2743	0.3465	0.5865	0.065*
C12	1.2902 (2)	0.5003 (3)	0.48467 (19)	0.0520 (5)
H12	1.4098	0.5937	0.5289	0.062*
C13	1.1959 (2)	0.5100 (2)	0.38442 (18)	0.0449 (4)
H13	1.2520	0.6092	0.3608	0.054*
C14	0.7341 (2)	0.0706 (2)	0.29112 (17)	0.0408 (4)
C15	0.6600 (3)	0.8098 (3)	-0.1699 (2)	0.0545 (5)
H15A	0.6832	0.9017	-0.0787	0.082*
H15B	0.5730	0.8035	-0.2330	0.082*

H15C	0.7693	0.8447	-0.1978	0.082*
H5B	0.675 (3)	0.022 (3)	0.5468 (12)	0.080*
H5A	0.591 (2)	0.046 (3)	0.648 (2)	0.080*
H1	0.8112 (18)	0.2707 (19)	0.166 (2)	0.080*
H1A	0.5504 (18)	0.145 (3)	-0.0780 (19)	0.080*

Atomic displacement parameters (Å²)

	U^{11}	U^{22}	U^{33}	U^{12}	U^{13}	U^{23}
N1	0.0349 (8)	0.0350 (8)	0.0348 (7)	0.0161 (6)	0.0043 (6)	0.0143 (6)
O1	0.0436 (7)	0.0320 (6)	0.0458 (7)	0.0131 (5)	-0.0044 (5)	0.0157 (5)
O2	0.0443 (7)	0.0412 (7)	0.0466 (7)	0.0112 (5)	-0.0061 (6)	0.0213 (6)
O3	0.0562 (8)	0.0592 (8)	0.0482 (8)	0.0121 (7)	0.0074 (6)	0.0288 (7)
O4	0.0474 (7)	0.0416 (7)	0.0490 (7)	0.0213 (6)	0.0037 (6)	0.0238 (6)
O5	0.0548 (9)	0.0918 (11)	0.0524 (9)	0.0265 (9)	0.0044 (7)	0.0331 (9)
C1	0.0335 (8)	0.0346 (9)	0.0336 (8)	0.0154 (7)	0.0053 (7)	0.0135 (7)
C2	0.0337 (8)	0.0306 (8)	0.0361 (9)	0.0151 (7)	0.0096 (7)	0.0148 (7)
C3	0.0325 (8)	0.0326 (8)	0.0355 (9)	0.0127 (7)	0.0043 (7)	0.0127 (7)
C4	0.0375 (9)	0.0389 (9)	0.0383 (9)	0.0203 (8)	0.0106 (7)	0.0196 (8)
C5	0.0433 (10)	0.0328 (9)	0.0494 (10)	0.0155 (8)	0.0090 (8)	0.0202 (8)
C6	0.0397 (9)	0.0320 (9)	0.0419 (10)	0.0098 (7)	0.0028 (7)	0.0137 (7)
C7	0.0339 (9)	0.0342 (9)	0.0366 (9)	0.0135 (7)	0.0056 (7)	0.0131 (7)
C8	0.0375 (9)	0.0398 (9)	0.0324 (8)	0.0225 (8)	0.0060 (7)	0.0114 (7)
C9	0.0403 (9)	0.0407 (9)	0.0338 (9)	0.0239 (8)	0.0072 (7)	0.0133 (7)
C10	0.0517 (11)	0.0553 (11)	0.0456 (10)	0.0313 (10)	0.0098 (8)	0.0246 (9)
C11	0.0513 (11)	0.0727 (13)	0.0441 (11)	0.0381 (11)	0.0041 (9)	0.0241 (10)
C12	0.0379 (10)	0.0631 (12)	0.0454 (11)	0.0255 (9)	0.0019 (8)	0.0164 (10)
C13	0.0374 (9)	0.0456 (10)	0.0439 (10)	0.0192 (8)	0.0061 (8)	0.0157 (8)
C14	0.0441 (10)	0.0373 (9)	0.0395 (9)	0.0207 (8)	0.0068 (8)	0.0163 (8)
C15	0.0688 (13)	0.0461 (11)	0.0553 (12)	0.0315 (10)	0.0085 (10)	0.0275 (9)

Geometric parameters (Å, °)

N1—C7	1.301 (2)	C5—C6	1.360 (2)
N1—C8	1.420 (2)	C5—H5	0.9300
N1—H1	0.912 (9)	C6—H6	0.9300
O1—C2	1.3346 (18)	C7—H7	0.9300
O1—H1A	0.863 (10)	C8—C13	1.393 (2)
O2—C14	1.2625 (19)	C8—C9	1.400 (2)
O3—C14	1.237 (2)	C9—C10	1.391 (2)
O4—C4	1.3474 (18)	C9—C14	1.517 (2)
O4—C15	1.438 (2)	C10—C11	1.379 (3)
O5—H5B	0.858 (9)	C10—H10	0.9300
O5—H5A	0.851 (9)	C11—C12	1.375 (3)
C1—C6	1.408 (2)	C11—H11	0.9300
C1—C7	1.410 (2)	C12—C13	1.377 (2)
C1—C2	1.424 (2)	C12—H12	0.9300
C2—C3	1.384 (2)	C13—H13	0.9300

C3—C4	1.384 (2)	C15—H15A	0.9600
C3—H3	0.9300	C15—H15B	0.9600
C4—C5	1.403 (2)	C15—H15C	0.9600
C7—N1—C8	125.26 (14)	C13—C8—C9	120.22 (15)
C7—N1—H1	121.8 (13)	C13—C8—N1	120.48 (15)
C8—N1—H1	112.5 (13)	C9—C8—N1	119.29 (14)
C2—O1—H1A	109.4 (15)	C10—C9—C8	117.87 (16)
C4—O4—C15	118.67 (13)	C10—C9—C14	118.71 (16)
H5B—O5—H5A	105.0 (17)	C8—C9—C14	123.39 (15)
C6—C1—C7	117.43 (14)	C11—C10—C9	121.89 (18)
C6—C1—C2	117.96 (14)	C11—C10—H10	119.1
C7—C1—C2	124.60 (14)	C9—C10—H10	119.1
O1—C2—C3	123.29 (14)	C12—C11—C10	119.34 (17)
O1—C2—C1	117.29 (14)	C12—C11—H11	120.3
C3—C2—C1	119.42 (14)	C10—C11—H11	120.3
C2—C3—C4	120.63 (14)	C11—C12—C13	120.63 (17)
C2—C3—H3	119.7	C11—C12—H12	119.7
C4—C3—H3	119.7	C13—C12—H12	119.7
O4—C4—C3	115.29 (14)	C12—C13—C8	120.03 (17)
O4—C4—C5	123.87 (14)	C12—C13—H13	120.0
C3—C4—C5	120.83 (14)	C8—C13—H13	120.0
C6—C5—C4	118.62 (15)	O3—C14—O2	124.52 (16)
C6—C5—H5	120.7	O3—C14—C9	118.27 (15)
C4—C5—H5	120.7	O2—C14—C9	117.21 (15)
C5—C6—C1	122.51 (15)	O4—C15—H15A	109.5
C5—C6—H6	118.7	O4—C15—H15B	109.5
C1—C6—H6	118.7	H15A—C15—H15B	109.5
N1—C7—C1	127.47 (15)	O4—C15—H15C	109.5
N1—C7—H7	116.3	H15A—C15—H15C	109.5
C1—C7—H7	116.3	H15B—C15—H15C	109.5

Hydrogen-bond geometry (\AA , $^\circ$)

$D-H\cdots A$	$D-H$	$H\cdots A$	$D\cdots A$	$D-H\cdots A$
N1—H1 \cdots O1	0.91 (1)	2.14 (2)	2.7257 (17)	121 (2)
N1—H1 \cdots O2	0.91 (1)	1.88 (2)	2.6366 (17)	139 (2)
O1—H1A \cdots O2 ⁱ	0.86 (1)	1.72 (1)	2.5675 (16)	165 (2)
O5—H5A \cdots O3 ⁱⁱ	0.85 (1)	2.07 (1)	2.907 (2)	169 (2)
O5—H5B \cdots O3	0.86 (1)	1.95 (1)	2.806 (2)	178 (2)

Symmetry codes: (i) $-x+1, -y, -z$; (ii) $-x+1, -y, -z+1$.