

Acta Crystallographica Section E

Structure Reports

Online

ISSN 1600-5368

3-(4-Fluorophenylsulfinyl)-2-methyl-1-benzofuran

Hong Dae Choi,^a Pil Ja Seo,^a Byeng Wha Son^b and Uk Lee^{b*}

^aDepartment of Chemistry, Donggeui University, San 24 Kaya-dong Busanjin-gu, Busan 614-714, Republic of Korea, and ^bDepartment of Chemistry, Pukyong National University, 599-1 Daeyeon 3-dong, Nam-gu, Busan 608-737, Republic of Korea

Correspondence e-mail: uklee@pknu.ac.kr

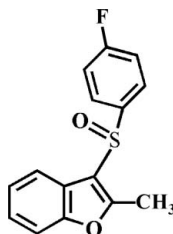
Received 3 February 2010; accepted 4 February 2010

Key indicators: single-crystal X-ray study; $T = 173$ K; mean $\sigma(\text{C}-\text{C}) = 0.003$ Å; R factor = 0.035; wR factor = 0.101; data-to-parameter ratio = 16.6.

In the title compound, $\text{C}_{15}\text{H}_{11}\text{FO}_2\text{S}$, the O atom and the 4-fluorophenyl group of the 4-fluorophenylsulfinyl substituent lie on opposite sides of the plane of the benzofuran fragment; the 4-fluorophenyl ring is almost perpendicular to this plane [dihedral angle = $89.59(5)^\circ$]. Intermolecular $\text{C}-\text{H}\cdots\text{F}$ and $\text{C}-\text{H}\cdots\text{O}$ hydrogen bonds link the molecules together in the crystal structure.

Related literature

For the crystal structures of similar 2-methyl-3-phenylsulfinyl-1-benzofuran derivatives, see: Choi *et al.* (2008a,b,c). For the pharmacological activity of benzofuran compounds, see: Aslam *et al.* (2006); Galal *et al.* (2009); Khan *et al.* (2005). For natural products with benzofuran rings, see: Akgul & Anil (2003); Soekamto *et al.* (2003).



Experimental

Crystal data

 $\text{C}_{15}\text{H}_{11}\text{FO}_2\text{S}$ $M_r = 274.30$ Orthorhombic, $Pbcn$

$a = 14.992(1)$ Å
 $b = 10.4661(8)$ Å
 $c = 16.008(1)$ Å
 $V = 2511.8(3)$ Å³

 $Z = 8$ Mo $K\alpha$ radiation $\mu = 0.26$ mm⁻¹ $T = 173$ K $0.50 \times 0.50 \times 0.25$ mm

Data collection

Bruker SMART APEXII CCD diffractometer
 Absorption correction: multi-scan (SADABS; Bruker, 2009)
 $T_{\min} = 0.880$, $T_{\max} = 0.937$

14681 measured reflections
 2878 independent reflections
 2315 reflections with $I > 2\sigma(I)$
 $R_{\text{int}} = 0.026$

Refinement

$R[F^2 > 2\sigma(F^2)] = 0.035$
 $wR(F^2) = 0.101$
 $S = 1.10$
 2878 reflections

173 parameters
 H-atom parameters constrained
 $\Delta\rho_{\text{max}} = 0.29$ e Å⁻³
 $\Delta\rho_{\text{min}} = -0.32$ e Å⁻³

Table 1

Hydrogen-bond geometry (Å, °).

| $D-H\cdots A$ | $D-H$ | $H\cdots A$ | $D\cdots A$ | $D-H\cdots A$ |
|---|-------|-------------|-------------|---------------|
| $\text{C6}-\text{H6}\cdots\text{F}^{\text{i}}$ | 0.93 | 2.52 | 3.346 (2) | 148 |
| $\text{C9}-\text{H9B}\cdots\text{O2}^{\text{ii}}$ | 0.96 | 2.41 | 3.189 (2) | 138 |

Symmetry codes: (i) $-x + 1, y + 1, -z + \frac{1}{2}$; (ii) $-x + \frac{3}{2}, y + \frac{1}{2}, z$.

Data collection: APEX2 (Bruker, 2009); cell refinement: SAINT (Bruker, 2009); data reduction: SAINT; program(s) used to solve structure: SHELXS97 (Sheldrick, 2008); program(s) used to refine structure: SHELXL97 (Sheldrick, 2008); molecular graphics: ORTEP-3 (Farrugia, 1997) and DIAMOND (Brandenburg, 1998); software used to prepare material for publication: SHELXL97.

Supplementary data and figures for this paper are available from the IUCr electronic archives (Reference: BG2329).

References

- Akgul, Y. Y. & Anil, H. (2003). *Phytochemistry*, **63**, 939–943.
 Aslam, S. N., Stevenson, P. C., Phythian, S. J., Veitch, N. C. & Hall, D. R. (2006). *Tetrahedron*, **62**, 4214–4226.
 Brandenburg, K. (1998). *DIAMOND*. Crystal Impact GbR, Bonn, Germany.
 Bruker (2009). *SADABS*. APEX2 and SAINT. Bruker AXS Inc., Madison, Wisconsin, USA.
 Choi, H. D., Seo, P. J., Son, B. W. & Lee, U. (2008a). *Acta Cryst.* **E64**, o1395.
 Choi, H. D., Seo, P. J., Son, B. W. & Lee, U. (2008b). *Acta Cryst.* **E64**, o1476.
 Choi, H. D., Seo, P. J., Son, B. W. & Lee, U. (2008c). *Acta Cryst.* **E64**, o1477.
 Farrugia, L. J. (1997). *J. Appl. Cryst.* **30**, 565.
 Galal, S. A., Abd El-All, A. S., Abdallah, M. M. & El-Diwani, H. I. (2009). *Bioorg. Med. Chem. Lett.* **19**, 2420–2428.
 Khan, M. W., Alam, M. J., Rashid, M. A. & Chowdhury, R. (2005). *Bioorg. Med. Chem.* **13**, 4796–4805.
 Sheldrick, G. M. (2008). *Acta Cryst.* **A64**, 112–122.
 Soekamto, N. H., Achmad, S. A., Ghisalberty, E. L., Hakim, E. H. & Syah, Y. M. (2003). *Phytochemistry*, **64**, 831–834.

supporting information

Acta Cryst. (2010). E66, o564 [doi:10.1107/S1600536810004411]

3-(4-Fluorophenylsulfinyl)-2-methyl-1-benzofuran

Hong Dae Choi, Pil Ja Seo, Byeng Wha Son and Uk Lee

S1. Comment

Molecules containing benzofuran skeleton show significant pharmacological activities such as antifungal (Aslam *et al.*, 2006), antitumor and antiviral (Galal *et al.*, 2009), antimicrobial (Khan *et al.*, 2005) properties. These compounds are widely occurring in nature (Akgul & Anil, 2003; Soekamto *et al.*, 2003). As a part of our ongoing studies of the effect of side chain substituents on the solid state structures of 2-methyl-3-phenylsulfinyl-1-benzofuran analogues (Choi *et al.*, 2008*a,b,c*), we report the crystal structure of the title compound (Fig. 1).

The benzofuran unit is essentially planar, with a mean deviation of 0.012 (1) Å from the least-squares plane defined by the nine constituent atoms. The 4-fluorophenyl ring is almost perpendicular to the plane of the benzofuran fragment [89.59 (5)°] and is tilted slightly towards it. The crystal packing (Fig. 2) is stabilized by two different intermolecular hydrogen bonds; the first one a C—H···F contact between the benzene H atom and the fluorine (Table 1, first entry), and the second, a C—H···O one between one methyl H atom and the oxygen of the S=O unit (Table 1, second entry).

S2. Experimental

77% 3-Chloroperoxybenzoic acid (359 mg, 1.6 mmol) was added in small portions to a stirred solution of 3-(4-fluorophenylsulfonyl)-2-methyl-1-benzofuran (387 mg, 1.5 mmol) in dichloromethane (40 mL) at 273 K. After being stirred at room temperature for 4h, the mixture was washed with saturated sodium bicarbonate solution and the organic layer was separated, dried over magnesium sulfate, filtered and concentrated in vacuum. The residue was purified by column chromatography (hexane-ethyl acetate, 1:1 v/v) to afford the title compound as a colorless solid [yield 78%, m.p. 415–416 K; R_f = 0.63 (hexane-ethyl acetate, 1:1 v/v)]. Single crystals suitable for X-ray diffraction were prepared by slow evaporation of a solution of the title compound in benzene at room temperature.

S3. Refinement

All H atoms were positioned geometrically and refined using a riding model, with C—H = 0.93 Å for aryl and 0.96 Å for methyl H atoms. $U_{iso}(H) = 1.2U_{eq}(C)$ for aryl and $1.5U_{eq}(C)$ for methyl H atoms.

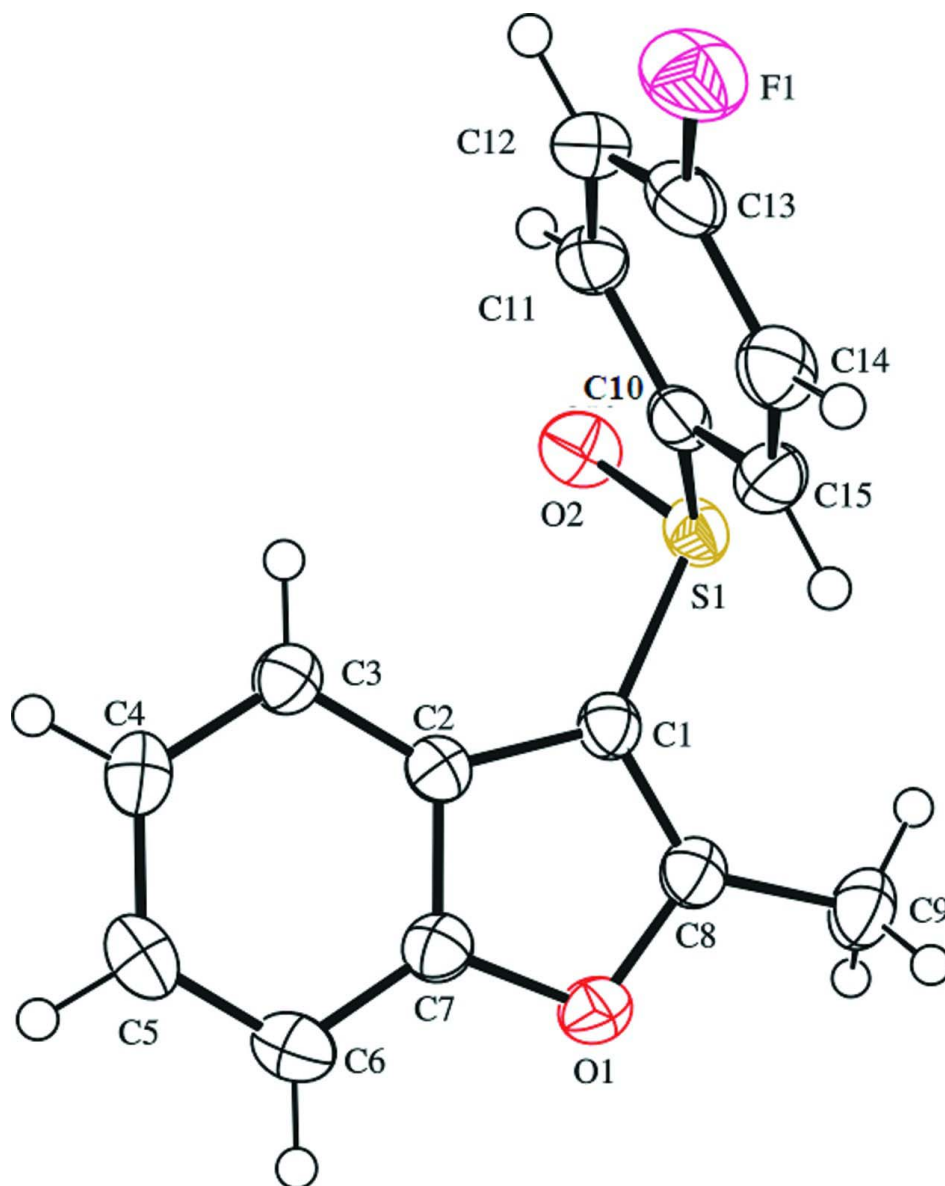


Figure 1

The molecular structure of the title compound with the atom numbering scheme. Displacement ellipsoids are drawn at the 50 % probability level. H atoms are presented as a small spheres of arbitrary radius.

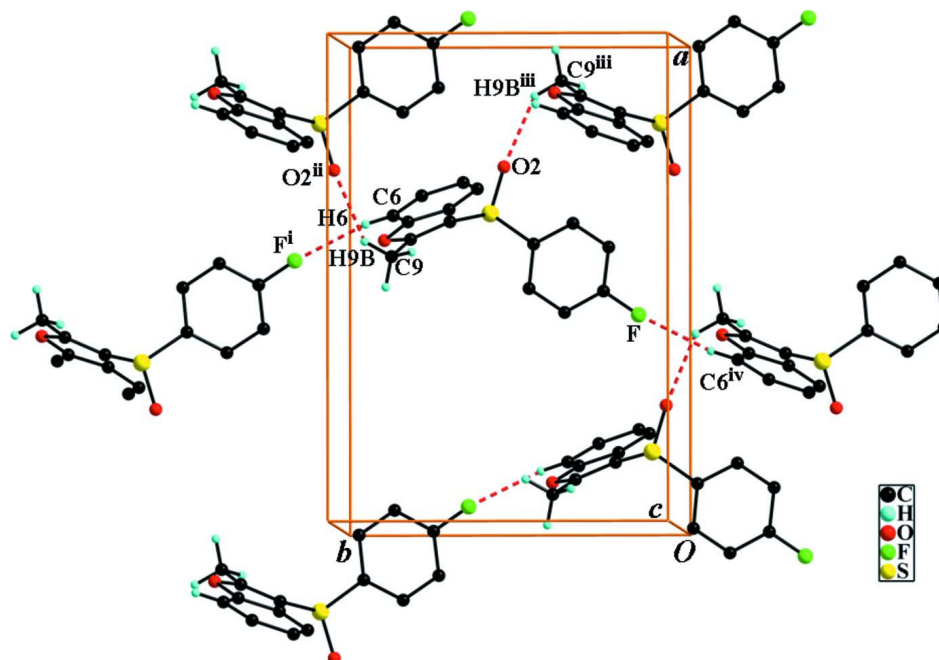


Figure 2

C—H...F and C—H...O interactions (dotted lines) in the crystal structure of the title compound. [Symmetry codes: i) $-x + 1, y + 1, -z + 1/2$; ii) $-x + 3/2, y + 1/2, z$; iii) $-x + 3/2, y - 1/2, z$; iv) $-x + 1, y - 1, -z + 1/2$.]

3-(4-Fluorophenylsulfinyl)-2-methyl-1-benzofuran

Crystal data

$C_{15}H_{11}FO_2S$

$M_r = 274.30$

Orthorhombic, *Pbcn*

Hall symbol: $-P\ 2n\ 2ab$

$a = 14.992\ (1)\ \text{\AA}$

$b = 10.4661\ (8)\ \text{\AA}$

$c = 16.008\ (1)\ \text{\AA}$

$V = 2511.8\ (3)\ \text{\AA}^3$

$Z = 8$

$F(000) = 1136$

$D_x = 1.451\ \text{Mg m}^{-3}$

Mo $K\alpha$ radiation, $\lambda = 0.71073\ \text{\AA}$

Cell parameters from 6779 reflections

$\theta = 2.4\text{--}27.5^\circ$

$\mu = 0.26\ \text{mm}^{-1}$

$T = 173\ \text{K}$

Block, colourless

$0.50 \times 0.50 \times 0.25\ \text{mm}$

Data collection

Bruker SMART APEXII CCD
diffractometer

Radiation source: Rotating Anode

Bruker HELIOS graded multilayer optics
monochromator

Detector resolution: $10.0\ \text{pixels mm}^{-1}$

φ and ω scans

Absorption correction: multi-scan
(*SADABS*; Bruker, 2009)

$T_{\min} = 0.880, T_{\max} = 0.937$

14681 measured reflections

2878 independent reflections

2315 reflections with $I > 2\sigma(I)$

$R_{\text{int}} = 0.026$

$\theta_{\max} = 27.5^\circ, \theta_{\min} = 2.4^\circ$

$h = -18 \rightarrow 19$

$k = -13 \rightarrow 13$

$l = -15 \rightarrow 20$

*Refinement*Refinement on F^2

Least-squares matrix: full

 $R[F^2 > 2\sigma(F^2)] = 0.035$ $wR(F^2) = 0.101$ $S = 1.10$

2878 reflections

173 parameters

0 restraints

Primary atom site location: structure-invariant
direct methodsSecondary atom site location: difference Fourier
map

Hydrogen site location: difference Fourier map

H-atom parameters constrained

 $w = 1/[\sigma^2(F_o^2) + (0.0443P)^2 + 1.1695P]$ where $P = (F_o^2 + 2F_c^2)/3$ $(\Delta/\sigma)_{\max} < 0.001$ $\Delta\rho_{\max} = 0.29 \text{ e } \text{\AA}^{-3}$ $\Delta\rho_{\min} = -0.32 \text{ e } \text{\AA}^{-3}$ *Special details*

Geometry. All esds (except the esd in the dihedral angle between two l.s. planes) are estimated using the full covariance matrix. The cell esds are taken into account individually in the estimation of esds in distances, angles and torsion angles; correlations between esds in cell parameters are only used when they are defined by crystal symmetry. An approximate (isotropic) treatment of cell esds is used for estimating esds involving l.s. planes.

Refinement. Refinement of F^2 against ALL reflections. The weighted R-factor wR and goodness of fit S are based on F^2 , conventional R-factors R are based on F , with F set to zero for negative F^2 . The threshold expression of $F^2 > 2\sigma(F^2)$ is used only for calculating R-factors(gt) etc. and is not relevant to the choice of reflections for refinement. R-factors based on F^2 are statistically about twice as large as those based on F , and R-factors based on ALL data will be even larger.

Fractional atomic coordinates and isotropic or equivalent isotropic displacement parameters (\AA^2)

| | <i>x</i> | <i>y</i> | <i>z</i> | $U_{\text{iso}}^*/U_{\text{eq}}$ |
|-----|--------------|--------------|--------------|----------------------------------|
| S | 0.65767 (3) | 0.58401 (4) | 0.06490 (3) | 0.03017 (13) |
| F | 0.44627 (8) | 0.14149 (11) | 0.17017 (8) | 0.0492 (3) |
| O1 | 0.59892 (8) | 0.88631 (11) | 0.19868 (8) | 0.0342 (3) |
| O2 | 0.75317 (9) | 0.54319 (13) | 0.06877 (8) | 0.0394 (3) |
| C1 | 0.63870 (11) | 0.69730 (16) | 0.14353 (10) | 0.0276 (3) |
| C2 | 0.66131 (10) | 0.69382 (15) | 0.23170 (10) | 0.0265 (3) |
| C3 | 0.70180 (11) | 0.60712 (17) | 0.28570 (11) | 0.0310 (4) |
| H3 | 0.7212 | 0.5278 | 0.2668 | 0.037* |
| C4 | 0.71236 (12) | 0.64306 (18) | 0.36876 (11) | 0.0352 (4) |
| H4 | 0.7384 | 0.5862 | 0.4062 | 0.042* |
| C5 | 0.68456 (13) | 0.76314 (19) | 0.39714 (11) | 0.0374 (4) |
| H5 | 0.6926 | 0.7844 | 0.4531 | 0.045* |
| C6 | 0.64547 (12) | 0.85086 (18) | 0.34404 (11) | 0.0362 (4) |
| H6 | 0.6272 | 0.9310 | 0.3625 | 0.043* |
| C7 | 0.63504 (11) | 0.81283 (16) | 0.26195 (11) | 0.0299 (4) |
| C8 | 0.60331 (11) | 0.81418 (16) | 0.12734 (11) | 0.0306 (4) |
| C9 | 0.57041 (13) | 0.87542 (19) | 0.04971 (12) | 0.0399 (4) |
| H9A | 0.5808 | 0.8195 | 0.0032 | 0.060* |
| H9B | 0.6015 | 0.9545 | 0.0410 | 0.060* |
| H9C | 0.5076 | 0.8919 | 0.0547 | 0.060* |
| C10 | 0.59373 (11) | 0.45389 (15) | 0.10668 (10) | 0.0274 (3) |
| C11 | 0.63578 (12) | 0.33736 (17) | 0.11793 (11) | 0.0316 (4) |
| H11 | 0.6971 | 0.3304 | 0.1102 | 0.038* |
| C12 | 0.58623 (13) | 0.23096 (17) | 0.14081 (11) | 0.0360 (4) |
| H12 | 0.6134 | 0.1521 | 0.1493 | 0.043* |

| | | | | |
|-----|--------------|--------------|--------------|------------|
| C13 | 0.49582 (12) | 0.24576 (16) | 0.15059 (11) | 0.0341 (4) |
| C14 | 0.45240 (12) | 0.36075 (18) | 0.14095 (11) | 0.0359 (4) |
| H14 | 0.3912 | 0.3671 | 0.1494 | 0.043* |
| C15 | 0.50226 (12) | 0.46665 (16) | 0.11837 (11) | 0.0329 (4) |
| H15 | 0.4748 | 0.5456 | 0.1111 | 0.040* |

Atomic displacement parameters (Å²)

| | U^{11} | U^{22} | U^{33} | U^{12} | U^{13} | U^{23} |
|-----|-------------|-------------|-------------|---------------|---------------|---------------|
| S | 0.0341 (2) | 0.0313 (2) | 0.0251 (2) | -0.00272 (17) | -0.00071 (16) | -0.00052 (16) |
| F | 0.0562 (7) | 0.0355 (6) | 0.0558 (7) | -0.0171 (5) | -0.0002 (6) | 0.0001 (5) |
| O1 | 0.0408 (7) | 0.0264 (6) | 0.0354 (6) | 0.0025 (5) | -0.0010 (5) | 0.0017 (5) |
| O2 | 0.0311 (6) | 0.0435 (7) | 0.0437 (7) | -0.0024 (5) | 0.0071 (6) | -0.0052 (6) |
| C1 | 0.0280 (8) | 0.0273 (8) | 0.0276 (8) | -0.0023 (6) | -0.0021 (6) | 0.0010 (6) |
| C2 | 0.0253 (8) | 0.0270 (8) | 0.0273 (8) | -0.0037 (6) | 0.0007 (6) | 0.0000 (6) |
| C3 | 0.0317 (9) | 0.0301 (8) | 0.0311 (9) | 0.0002 (7) | -0.0003 (7) | 0.0017 (7) |
| C4 | 0.0347 (9) | 0.0397 (10) | 0.0312 (9) | -0.0023 (7) | -0.0049 (7) | 0.0057 (7) |
| C5 | 0.0409 (10) | 0.0442 (10) | 0.0270 (9) | -0.0082 (8) | -0.0001 (8) | -0.0041 (8) |
| C6 | 0.0422 (10) | 0.0307 (9) | 0.0357 (9) | -0.0039 (7) | 0.0052 (8) | -0.0053 (7) |
| C7 | 0.0310 (9) | 0.0266 (8) | 0.0320 (9) | -0.0026 (6) | 0.0005 (7) | 0.0024 (7) |
| C8 | 0.0287 (8) | 0.0294 (8) | 0.0337 (9) | -0.0033 (7) | -0.0028 (7) | 0.0019 (7) |
| C9 | 0.0414 (10) | 0.0371 (10) | 0.0412 (10) | 0.0005 (8) | -0.0091 (8) | 0.0097 (8) |
| C10 | 0.0311 (8) | 0.0274 (8) | 0.0236 (8) | -0.0021 (6) | -0.0033 (6) | -0.0037 (6) |
| C11 | 0.0306 (9) | 0.0320 (9) | 0.0324 (9) | 0.0038 (7) | -0.0009 (7) | -0.0045 (7) |
| C12 | 0.0453 (10) | 0.0265 (8) | 0.0364 (9) | 0.0037 (7) | -0.0036 (8) | -0.0042 (7) |
| C13 | 0.0422 (10) | 0.0287 (8) | 0.0314 (9) | -0.0099 (7) | -0.0028 (7) | -0.0040 (7) |
| C14 | 0.0276 (8) | 0.0398 (10) | 0.0402 (10) | -0.0024 (7) | -0.0023 (7) | -0.0042 (8) |
| C15 | 0.0304 (8) | 0.0291 (9) | 0.0393 (9) | 0.0028 (7) | -0.0049 (7) | -0.0010 (7) |

Geometric parameters (Å, °)

| | | | |
|-------|-------------|---------|-----------|
| S—O2 | 1.4953 (14) | C6—C7 | 1.382 (2) |
| S—C1 | 1.7525 (17) | C6—H6 | 0.9300 |
| S—C10 | 1.7948 (17) | C8—C9 | 1.483 (2) |
| F—C13 | 1.357 (2) | C9—H9A | 0.9600 |
| O1—C8 | 1.371 (2) | C9—H9B | 0.9600 |
| O1—C7 | 1.382 (2) | C9—H9C | 0.9600 |
| C1—C8 | 1.358 (2) | C10—C11 | 1.385 (2) |
| C1—C2 | 1.452 (2) | C10—C15 | 1.390 (2) |
| C2—C3 | 1.393 (2) | C11—C12 | 1.388 (3) |
| C2—C7 | 1.393 (2) | C11—H11 | 0.9300 |
| C3—C4 | 1.391 (2) | C12—C13 | 1.373 (3) |
| C3—H3 | 0.9300 | C12—H12 | 0.9300 |
| C4—C5 | 1.400 (3) | C13—C14 | 1.377 (3) |
| C4—H4 | 0.9300 | C14—C15 | 1.385 (3) |
| C5—C6 | 1.382 (3) | C14—H14 | 0.9300 |
| C5—H5 | 0.9300 | C15—H15 | 0.9300 |

| | | | |
|-------------|--------------|-----------------|--------------|
| O2—S—C1 | 108.60 (8) | C1—C8—C9 | 132.78 (17) |
| O2—S—C10 | 106.21 (8) | O1—C8—C9 | 116.38 (15) |
| C1—S—C10 | 99.15 (8) | C8—C9—H9A | 109.5 |
| C8—O1—C7 | 106.58 (13) | C8—C9—H9B | 109.5 |
| C8—C1—C2 | 107.42 (15) | H9A—C9—H9B | 109.5 |
| C8—C1—S | 122.38 (13) | C8—C9—H9C | 109.5 |
| C2—C1—S | 130.04 (13) | H9A—C9—H9C | 109.5 |
| C3—C2—C7 | 119.34 (15) | H9B—C9—H9C | 109.5 |
| C3—C2—C1 | 136.18 (16) | C11—C10—C15 | 121.07 (16) |
| C7—C2—C1 | 104.45 (14) | C11—C10—S | 118.27 (13) |
| C4—C3—C2 | 117.83 (16) | C15—C10—S | 120.27 (13) |
| C4—C3—H3 | 121.1 | C10—C11—C12 | 119.83 (16) |
| C2—C3—H3 | 121.1 | C10—C11—H11 | 120.1 |
| C3—C4—C5 | 121.28 (17) | C12—C11—H11 | 120.1 |
| C3—C4—H4 | 119.4 | C13—C12—C11 | 117.90 (16) |
| C5—C4—H4 | 119.4 | C13—C12—H12 | 121.1 |
| C6—C5—C4 | 121.55 (17) | C11—C12—H12 | 121.1 |
| C6—C5—H5 | 119.2 | F—C13—C12 | 118.42 (16) |
| C4—C5—H5 | 119.2 | F—C13—C14 | 118.04 (16) |
| C5—C6—C7 | 116.21 (17) | C12—C13—C14 | 123.54 (16) |
| C5—C6—H6 | 121.9 | C13—C14—C15 | 118.26 (16) |
| C7—C6—H6 | 121.9 | C13—C14—H14 | 120.9 |
| C6—C7—O1 | 125.51 (16) | C15—C14—H14 | 120.9 |
| C6—C7—C2 | 123.78 (16) | C14—C15—C10 | 119.38 (16) |
| O1—C7—C2 | 110.70 (14) | C14—C15—H15 | 120.3 |
| C1—C8—O1 | 110.84 (15) | C10—C15—H15 | 120.3 |
| O2—S—C1—C8 | 125.82 (15) | C2—C1—C8—O1 | -1.56 (19) |
| C10—S—C1—C8 | -123.54 (15) | S—C1—C8—O1 | -177.39 (11) |
| O2—S—C1—C2 | -48.99 (17) | C2—C1—C8—C9 | 178.10 (18) |
| C10—S—C1—C2 | 61.65 (16) | S—C1—C8—C9 | 2.3 (3) |
| C8—C1—C2—C3 | -176.81 (19) | C7—O1—C8—C1 | 1.47 (18) |
| S—C1—C2—C3 | -1.4 (3) | C7—O1—C8—C9 | -178.25 (15) |
| C8—C1—C2—C7 | 1.00 (18) | O2—S—C10—C11 | -12.66 (15) |
| S—C1—C2—C7 | 176.41 (13) | C1—S—C10—C11 | -125.19 (13) |
| C7—C2—C3—C4 | 1.4 (2) | O2—S—C10—C15 | 174.41 (13) |
| C1—C2—C3—C4 | 178.99 (18) | C1—S—C10—C15 | 61.88 (15) |
| C2—C3—C4—C5 | -1.0 (3) | C15—C10—C11—C12 | 0.3 (3) |
| C3—C4—C5—C6 | 0.1 (3) | S—C10—C11—C12 | -172.52 (13) |
| C4—C5—C6—C7 | 0.4 (3) | C10—C11—C12—C13 | 0.7 (3) |
| C5—C6—C7—O1 | -178.95 (16) | C11—C12—C13—F | 177.80 (15) |
| C5—C6—C7—C2 | 0.1 (3) | C11—C12—C13—C14 | -1.7 (3) |
| C8—O1—C7—C6 | 178.34 (17) | F—C13—C14—C15 | -177.99 (15) |
| C8—O1—C7—C2 | -0.79 (18) | C12—C13—C14—C15 | 1.5 (3) |
| C3—C2—C7—C6 | -1.0 (3) | C13—C14—C15—C10 | -0.3 (3) |
| C1—C2—C7—C6 | -179.27 (16) | C11—C10—C15—C14 | -0.6 (3) |
| C3—C2—C7—O1 | 178.14 (14) | S—C10—C15—C14 | 172.18 (13) |
| C1—C2—C7—O1 | -0.12 (18) | | |

Hydrogen-bond geometry (Å, °)

| <i>D</i> —H \cdots <i>A</i> | <i>D</i> —H | H \cdots <i>A</i> | <i>D</i> \cdots <i>A</i> | <i>D</i> —H \cdots <i>A</i> |
|----------------------------------|-------------|---------------------|----------------------------|-------------------------------|
| C6—H6 \cdots F ⁱ | 0.93 | 2.52 | 3.346 (2) | 148 |
| C9—H9B \cdots O2 ⁱⁱ | 0.96 | 2.41 | 3.189 (2) | 138 |

Symmetry codes: (i) $-x+1, y+1, -z+1/2$; (ii) $-x+3/2, y+1/2, z$.