

Acta Crystallographica Section E

## Structure Reports

Online

ISSN 1600-5368

# 1-(4-Chlorophenyl)-3-(5-methyl-2-furyl)-prop-2-en-1-one

Huan-Mei Guo

Microscale Science Institute, Weifang University, Weifang 261061, People's Republic of China

Correspondence e-mail: huanmeigu@163.com

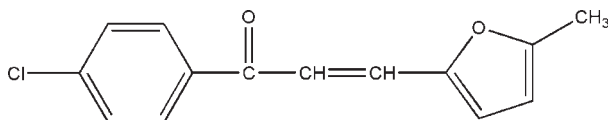
Received 8 October 2009; accepted 26 October 2009

 Key indicators: single-crystal X-ray study;  $T = 273$  K; mean  $\sigma(\text{C}-\text{C}) = 0.003$  Å;  $R$  factor = 0.054;  $wR$  factor = 0.180; data-to-parameter ratio = 19.4.

The title compound,  $\text{C}_{14}\text{H}_{11}\text{ClO}_2$ , was prepared from 4-chlorohyponone and 5-methylfurfural by an aldol condensation reaction. The dihedral angle formed between the two benzene rings is  $7.71(2)^\circ$ . The crystal structure is stabilized by  $\text{C}-\text{H}\cdots\text{O}$  interactions.

## Related literature

For the biological activity of chalcones, see: Anto *et al.* (1994); Dimmock *et al.* (1998); Hsieh *et al.* (1998); De Vincenzo *et al.* (2000). For a related structure, see: Guo *et al.* (2008).



## Experimental

### Crystal data

$\text{C}_{14}\text{H}_{11}\text{ClO}_2$   
 $M_r = 246.68$   
 Monoclinic,  $P2_1/n$   
 $a = 8.350(3)$  Å  
 $b = 15.732(5)$  Å  
 $c = 9.660(3)$  Å  
 $\beta = 106.882(5)^\circ$

$V = 1214.4(6)$  Å<sup>3</sup>  
 $Z = 4$   
 Mo  $K\alpha$  radiation  
 $\mu = 0.30$  mm<sup>-1</sup>  
 $T = 273$  K  
 $0.50 \times 0.30 \times 0.25$  mm

### Data collection

Bruker SMART CCD area-detector  
 diffractometer  
 Absorption correction: none  
 7894 measured reflections  
 2988 independent reflections  
 2055 reflections with  $I > 2\sigma(I)$   
 $R_{\text{int}} = 0.018$

### Refinement

$R[F^2 > 2\sigma(F^2)] = 0.054$   
 $wR(F^2) = 0.180$   
 $S = 1.07$   
 2988 reflections  
 154 parameters  
 H-atom parameters constrained  
 $\Delta\rho_{\text{max}} = 0.32$  e Å<sup>-3</sup>  
 $\Delta\rho_{\text{min}} = -0.36$  e Å<sup>-3</sup>

**Table 1**

Hydrogen-bond geometry (Å, °).

| $D-H\cdots A$                           | $D-H$ | $H\cdots A$ | $D\cdots A$ | $D-H\cdots A$ |
|---|-------|-------------|-------------|---------------|
| $\text{C9}-\text{H9A}\cdots\text{O1}^i$ | 0.93  | 2.53        | 3.380 (4)   | 153           |
| $\text{C14}-\text{H14A}\cdots\text{O1}$ | 0.93  | 2.47        | 2.795 (2)   | 100           |

 Symmetry code: (i)  $-x, -y, -z$ .

Data collection: SMART (Bruker, 1997); cell refinement: SAINT (Bruker, 1997); data reduction: SAINT; program(s) used to solve structure: SHELXS97 (Sheldrick, 2008); program(s) used to refine structure: SHELXL97 (Sheldrick, 2008); molecular graphics: SHELXTL (Sheldrick, 2008); software used to prepare material for publication: SHELXTL.

The author would like to thank the National Natural Science Foundation of Shandong (Y2008B29) and Weifang University for research support.

Supplementary data and figures for this paper are available from the IUCr electronic archives (Reference: TK2555).

## References

- Anto, R. J., Kuttan, G., Kuttan, R., Sathyanarayana, K. & Rao, M. N. A. (1994). *J. Clin. Biochem. Nutr.* **17**, 73–80.
- Bruker (1997). SMART and SAINT. Bruker AXS Inc., Madison, Wisconsin, USA.
- De Vincenzo, R., Ferlini, C., Distefano, M., Gaggini, C., Riva, A., Bombardelli, E., Morazzoni, P., Valenti, P., Belluti, F., Ranelletti, F. O., Mancuso, S. & Scambia, G. (2000). *Cancer Chemother. Pharmacol.* **46**, 305–312.
- Dimmock, J. R., Kandepu, N. M., Hetherington, M., Quail, J. W., Pugazhenthii, U., Sudom, A. M., Chamankhah, M., Rose, P., Pass, E., Allen, T. M., Halleran, S., Szydowski, J., Mutus, B., Tannous, M., Manavathu, E. K., Myers, T. G., De Clercq, E. & Balzarini, J. (1998). *J. Med. Chem.* **41**, 1014–1026.
- Guo, H.-M., Wang, X.-B. & Jian, F.-F. (2008). *Acta Cryst.* **E64**, o1951.
- Hsieh, H. K., Lee, T. H., Wang, J. P., Wang, J. J. & Lin, C. N. (1998). *Pharm. Res.* **15**, 39–46.
- Sheldrick, G. M. (2008). *Acta Cryst.* **A64**, 112–122.

---

# supporting information

*Acta Cryst.* (2009). E65, o2921 [https://doi.org/10.1107/S1600536809044456]

## 1-(4-Chlorophenyl)-3-(5-methyl-2-furyl)prop-2-en-1-one

Huan-Mei Guo

### S1. Comment

Among flavonoids, chalcones have been identified as interesting compounds with multiple biological actions, including anti-inflammatory (Hsieh *et al.*, 1998) and anti-oxidant (Anto *et al.*, 1994) activities. Of particular interest is the effectiveness of chalcones against cancer (De Vincenzo *et al.*, 2000; Dimmock *et al.*, 1998). As part of our search for new biologically active compounds, we synthesized the title chalcone, (I), and report its crystal structure herein.

The molecular structure of (I), Fig. 1, comprises a furan ring and a chlorophenyl group. These groups are not co-planar as seen in the value of the dihedral angle between them of  $7.71(2)^\circ$ . Bond distances and angles conform to literature precedents (Guo, *et al.*, 2008). There are intramolecular and intermolecular C—H $\cdots$ O interactions that stabilize the molecular and crystal structures, respectively (Table 1). The intermolecular contacts lead to the formation of centrosymmetric dimers.

### S2. Experimental

Compound (I) was prepared in 80% yield by stirring an ethanol (30 ml) mixture comprising 4-chlorohyponone (0.02 mol), 5-methylfurfural (0.02 mol) and 10% NaOH (10 ml) for 3 h. Single crystals were obtained by recrystallization of (I) from ethyl acetate at room temperature.

### S3. Refinement

H atoms were positioned geometrically and allowed to ride on their parent atoms, with C—H distances of 0.93–0.96 Å, and with  $U_{\text{iso}}(\text{H}) = 1.2\text{--}1.5U_{\text{eq}}(\text{C})$ .

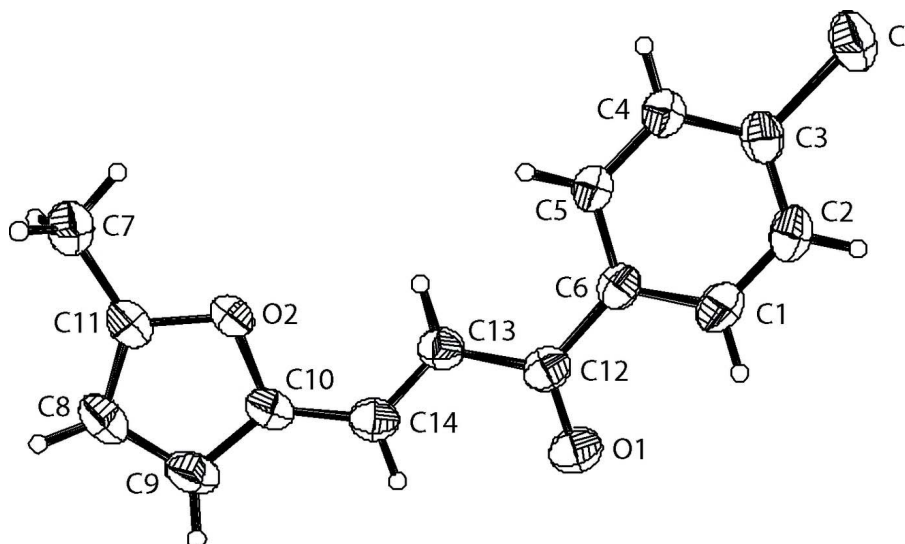


Figure 1

The molecular structure of (I) with the atom-labeling scheme. Displacement ellipsoids are drawn at the 30% probability level.

### 1-(4-Chlorophenyl)-3-(5-methyl-2-furyl)prop-2-en-1-one

#### Crystal data

$C_{14}H_{11}ClO_2$

$M_r = 246.68$

Monoclinic,  $P2_1/n$

Hall symbol:  $-P\ 2_1/n$

$a = 8.350\ (3)\ \text{\AA}$

$b = 15.732\ (5)\ \text{\AA}$

$c = 9.660\ (3)\ \text{\AA}$

$\beta = 106.882\ (5)^\circ$

$V = 1214.4\ (6)\ \text{\AA}^3$

$Z = 4$

$F(000) = 512$

$D_x = 1.349\ \text{Mg m}^{-3}$

Mo  $K\alpha$  radiation,  $\lambda = 0.71073\ \text{\AA}$

Cell parameters from 2055 reflections

$\theta = 2.6\text{--}28.4^\circ$

$\mu = 0.30\ \text{mm}^{-1}$

$T = 273\ \text{K}$

Block, yellow

$0.50 \times 0.30 \times 0.25\ \text{mm}$

#### Data collection

Bruker SMART CCD area-detector  
diffractometer

Radiation source: fine-focus sealed tube

Graphite monochromator

$\varphi$  and  $\omega$  scans

7894 measured reflections

2988 independent reflections

2055 reflections with  $I > 2\sigma(I)$

$R_{\text{int}} = 0.018$

$\theta_{\text{max}} = 28.4^\circ$ ,  $\theta_{\text{min}} = 2.6^\circ$

$h = -10 \rightarrow 11$

$k = -20 \rightarrow 21$

$l = -11 \rightarrow 12$

#### Refinement

Refinement on  $F^2$

Least-squares matrix: full

$R[F^2 > 2\sigma(F^2)] = 0.054$

$wR(F^2) = 0.180$

$S = 1.07$

2988 reflections

154 parameters

0 restraints

Primary atom site location: structure-invariant  
direct methods

Secondary atom site location: difference Fourier  
map

Hydrogen site location: inferred from  
neighbouring sites

H-atom parameters constrained

$$w = 1/[\sigma^2(F_o^2) + (0.0853P)^2 + 0.305P]$$

where  $P = (F_o^2 + 2F_c^2)/3$   
 $(\Delta/\sigma)_{\max} < 0.001$

$$\Delta\rho_{\max} = 0.32 \text{ e } \text{\AA}^{-3}$$

$$\Delta\rho_{\min} = -0.36 \text{ e } \text{\AA}^{-3}$$

### Special details

**Geometry.** All e.s.d.'s (except the e.s.d. in the dihedral angle between two l.s. planes) are estimated using the full covariance matrix. The cell e.s.d.'s are taken into account individually in the estimation of e.s.d.'s in distances, angles and torsion angles; correlations between e.s.d.'s in cell parameters are only used when they are defined by crystal symmetry. An approximate (isotropic) treatment of cell e.s.d.'s is used for estimating e.s.d.'s involving l.s. planes.

**Refinement.** Refinement of  $F^2$  against ALL reflections. The weighted  $R$ -factor  $wR$  and goodness of fit  $S$  are based on  $F^2$ , conventional  $R$ -factors  $R$  are based on  $F$ , with  $F$  set to zero for negative  $F^2$ . The threshold expression of  $F^2 > \sigma(F^2)$  is used only for calculating  $R$ -factors(gt) *etc.* and is not relevant to the choice of reflections for refinement.  $R$ -factors based on  $F^2$  are statistically about twice as large as those based on  $F$ , and  $R$ -factors based on ALL data will be even larger.

### Fractional atomic coordinates and isotropic or equivalent isotropic displacement parameters ( $\text{\AA}^2$ )

|      | <i>x</i>     | <i>y</i>     | <i>z</i>     | $U_{\text{iso}}^*/U_{\text{eq}}$ |
|------|--------------|--------------|--------------|----------------------------------|
| Cl   | 0.67915 (10) | 0.11664 (5)  | 0.96441 (7)  | 0.0964 (3)                       |
| O2   | 0.29242 (17) | 0.21735 (9)  | 0.00449 (14) | 0.0596 (4)                       |
| C14  | 0.1656 (3)   | 0.10736 (14) | 0.1064 (3)   | 0.0658 (5)                       |
| H14A | 0.0836       | 0.0655       | 0.0908       | 0.079*                           |
| C13  | 0.2634 (3)   | 0.11657 (13) | 0.2411 (2)   | 0.0626 (5)                       |
| H13A | 0.3490       | 0.1566       | 0.2598       | 0.075*                           |
| C10  | 0.1736 (3)   | 0.15490 (15) | -0.0158 (2)  | 0.0629 (5)                       |
| C12  | 0.2409 (3)   | 0.06591 (13) | 0.3607 (3)   | 0.0650 (5)                       |
| C5   | 0.4834 (3)   | 0.13765 (16) | 0.5410 (2)   | 0.0710 (6)                       |
| H5A  | 0.5052       | 0.1688       | 0.4666       | 0.085*                           |
| C6   | 0.3508 (3)   | 0.08210 (12) | 0.5095 (2)   | 0.0587 (5)                       |
| C4   | 0.5843 (3)   | 0.14810 (17) | 0.6800 (3)   | 0.0774 (7)                       |
| H4A  | 0.6746       | 0.1854       | 0.6994       | 0.093*                           |
| O1   | 0.1329 (2)   | 0.01152 (11) | 0.3404 (2)   | 0.0909 (6)                       |
| C3   | 0.5513 (3)   | 0.10340 (14) | 0.7892 (2)   | 0.0670 (6)                       |
| C11  | 0.2738 (3)   | 0.25576 (15) | -0.1251 (2)  | 0.0653 (6)                       |
| C2   | 0.4203 (4)   | 0.04941 (17) | 0.7630 (3)   | 0.0860 (8)                       |
| H2A  | 0.3984       | 0.0195       | 0.8386       | 0.103*                           |
| C9   | 0.0819 (3)   | 0.15581 (19) | -0.1574 (3)  | 0.0800 (7)                       |
| H9A  | -0.0076      | 0.1203       | -0.2009      | 0.096*                           |
| C8   | 0.1463 (3)   | 0.21949 (18) | -0.2252 (3)  | 0.0783 (7)                       |
| H8A  | 0.1079       | 0.2343       | -0.3224      | 0.094*                           |
| C1   | 0.3202 (4)   | 0.03911 (16) | 0.6244 (3)   | 0.0844 (8)                       |
| H1A  | 0.2293       | 0.0023       | 0.6067       | 0.101*                           |
| C7   | 0.3947 (3)   | 0.32399 (17) | -0.1277 (3)  | 0.0853 (7)                       |
| H7A  | 0.4700       | 0.3315       | -0.0324      | 0.128*                           |
| H7B  | 0.3355       | 0.3761       | -0.1594      | 0.128*                           |
| H7C  | 0.4572       | 0.3086       | -0.1932      | 0.128*                           |

Atomic displacement parameters ( $\text{\AA}^2$ )

|     | $U^{11}$    | $U^{22}$    | $U^{33}$    | $U^{12}$     | $U^{13}$    | $U^{23}$     |
|-----|-------------|-------------|-------------|--------------|-------------|--------------|
| C1  | 0.1060 (6)  | 0.1184 (6)  | 0.0598 (4)  | 0.0105 (4)   | 0.0160 (4)  | 0.0124 (3)   |
| O2  | 0.0562 (8)  | 0.0653 (8)  | 0.0492 (7)  | 0.0017 (6)   | 0.0026 (6)  | -0.0025 (6)  |
| C14 | 0.0611 (12) | 0.0613 (12) | 0.0731 (14) | -0.0025 (10) | 0.0163 (10) | -0.0093 (10) |
| C13 | 0.0600 (12) | 0.0571 (11) | 0.0675 (13) | -0.0025 (9)  | 0.0137 (10) | -0.0028 (9)  |
| C10 | 0.0532 (11) | 0.0707 (13) | 0.0586 (12) | 0.0006 (9)   | 0.0068 (9)  | -0.0124 (9)  |
| C12 | 0.0682 (13) | 0.0501 (11) | 0.0779 (14) | -0.0017 (10) | 0.0231 (11) | -0.0008 (10) |
| C5  | 0.0748 (14) | 0.0776 (14) | 0.0610 (12) | -0.0125 (12) | 0.0201 (11) | 0.0129 (11)  |
| C6  | 0.0644 (12) | 0.0462 (10) | 0.0682 (12) | 0.0024 (9)   | 0.0232 (10) | 0.0047 (9)   |
| C4  | 0.0774 (15) | 0.0846 (16) | 0.0666 (14) | -0.0147 (13) | 0.0151 (11) | 0.0133 (12)  |
| O1  | 0.0971 (13) | 0.0774 (11) | 0.0948 (13) | -0.0329 (10) | 0.0224 (10) | -0.0050 (9)  |
| C3  | 0.0738 (14) | 0.0675 (13) | 0.0610 (12) | 0.0142 (11)  | 0.0213 (10) | 0.0084 (10)  |
| C11 | 0.0633 (12) | 0.0738 (13) | 0.0535 (11) | 0.0127 (10)  | 0.0088 (9)  | -0.0016 (9)  |
| C2  | 0.104 (2)   | 0.0835 (17) | 0.0741 (16) | -0.0067 (15) | 0.0314 (15) | 0.0243 (13)  |
| C9  | 0.0655 (13) | 0.1002 (18) | 0.0643 (13) | -0.0104 (13) | 0.0028 (11) | -0.0208 (13) |
| C8  | 0.0738 (14) | 0.1012 (18) | 0.0504 (11) | 0.0100 (13)  | 0.0030 (10) | -0.0061 (11) |
| C1  | 0.0927 (17) | 0.0735 (15) | 0.0897 (19) | -0.0194 (13) | 0.0306 (15) | 0.0162 (13)  |
| C7  | 0.0932 (18) | 0.0817 (16) | 0.0752 (15) | 0.0017 (14)  | 0.0154 (14) | 0.0149 (13)  |

Geometric parameters ( $\text{\AA}$ ,  $^\circ$ )

|              |             |           |             |
|--------------|-------------|-----------|-------------|
| C1—C3        | 1.731 (2)   | C4—C3     | 1.361 (3)   |
| O2—C11       | 1.358 (3)   | C4—H4A    | 0.9300      |
| O2—C10       | 1.370 (3)   | C3—C2     | 1.349 (4)   |
| C14—C13      | 1.328 (3)   | C11—C8    | 1.340 (3)   |
| C14—C10      | 1.415 (3)   | C11—C7    | 1.479 (4)   |
| C14—H14A     | 0.9300      | C2—C1     | 1.367 (4)   |
| C13—C12      | 1.460 (3)   | C2—H2A    | 0.9300      |
| C13—H13A     | 0.9300      | C9—C8     | 1.388 (4)   |
| C10—C9       | 1.360 (3)   | C9—H9A    | 0.9300      |
| C12—O1       | 1.217 (3)   | C8—H8A    | 0.9300      |
| C12—C6       | 1.485 (3)   | C1—H1A    | 0.9300      |
| C5—C4        | 1.372 (3)   | C7—H7A    | 0.9600      |
| C5—C6        | 1.373 (3)   | C7—H7B    | 0.9600      |
| C5—H5A       | 0.9300      | C7—H7C    | 0.9600      |
| C6—C1        | 1.385 (3)   |           |             |
| C11—O2—C10   | 107.65 (16) | C2—C3—C1  | 119.68 (19) |
| C13—C14—C10  | 126.5 (2)   | C4—C3—C1  | 119.3 (2)   |
| C13—C14—H14A | 116.7       | C8—C11—O2 | 109.3 (2)   |
| C10—C14—H14A | 116.7       | C8—C11—C7 | 134.4 (2)   |
| C14—C13—C12  | 122.1 (2)   | O2—C11—C7 | 116.28 (19) |
| C14—C13—H13A | 118.9       | C3—C2—C1  | 119.4 (2)   |
| C12—C13—H13A | 118.9       | C3—C2—H2A | 120.3       |
| C9—C10—O2    | 108.0 (2)   | C1—C2—H2A | 120.3       |
| C9—C10—C14   | 134.1 (2)   | C10—C9—C8 | 107.5 (2)   |

|            |             |            |           |
|------------|-------------|------------|-----------|
| O2—C10—C14 | 117.89 (17) | C10—C9—H9A | 126.3     |
| O1—C12—C13 | 121.0 (2)   | C8—C9—H9A  | 126.3     |
| O1—C12—C6  | 119.8 (2)   | C11—C8—C9  | 107.6 (2) |
| C13—C12—C6 | 119.15 (18) | C11—C8—H8A | 126.2     |
| C4—C5—C6   | 121.3 (2)   | C9—C8—H8A  | 126.2     |
| C4—C5—H5A  | 119.4       | C2—C1—C6   | 121.6 (2) |
| C6—C5—H5A  | 119.4       | C2—C1—H1A  | 119.2     |
| C5—C6—C1   | 117.3 (2)   | C6—C1—H1A  | 119.2     |
| C5—C6—C12  | 123.70 (19) | C11—C7—H7A | 109.5     |
| C1—C6—C12  | 119.0 (2)   | C11—C7—H7B | 109.5     |
| C3—C4—C5   | 119.4 (2)   | H7A—C7—H7B | 109.5     |
| C3—C4—H4A  | 120.3       | C11—C7—H7C | 109.5     |
| C5—C4—H4A  | 120.3       | H7A—C7—H7C | 109.5     |
| C2—C3—C4   | 121.0 (2)   | H7B—C7—H7C | 109.5     |

*Hydrogen-bond geometry (Å, °)*

| <i>D</i> —H $\cdots$ <i>A</i>   | <i>D</i> —H | H $\cdots$ <i>A</i> | <i>D</i> $\cdots$ <i>A</i> | <i>D</i> —H $\cdots$ <i>A</i> |
|---------------------------------|-------------|---------------------|----------------------------|-------------------------------|
| C9—H9A $\cdots$ O1 <sup>i</sup> | 0.93        | 2.53                | 3.380 (4)                  | 153                           |
| C14—H14A $\cdots$ O1            | 0.93        | 2.47                | 2.795 (2)                  | 100                           |

Symmetry code: (i)  $-x, -y, -z$ .