

Acta Crystallographica Section E

Structure Reports

Online

ISSN 1600-5368

2-Bromo-1,3-bis(4-chlorophenyl)prop-2-en-1-one

William T. A. Harrison,^{a*} Q. N. M. Hakim Al-Ariqie,^b
B. Narayana,^c H. S. Yathirajan^b and B. K. Sarojini^d

^aDepartment of Chemistry, University of Aberdeen, Meston Walk, Aberdeen AB24 3UE, Scotland, ^bDepartment of Studies in Chemistry, University of Mysore, Manasagangotri, Mysore 570 006, India, ^cDepartment of Chemistry, Mangalore University, Mangalagangotri 574 199, India, and ^dDepartment of Chemistry, P. A. College of Engineering, Nadupadavu, Mangalore 574 153, India
Correspondence e-mail: w.harrison@abdn.ac.uk

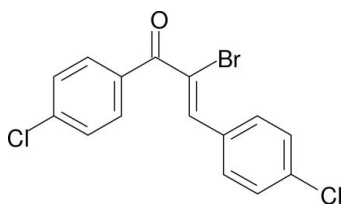
Received 15 June 2009; accepted 21 September 2009

Key indicators: single-crystal X-ray study; $T = 120$ K; mean $\sigma(\text{C}-\text{C}) = 0.005$ Å; R factor = 0.036; wR factor = 0.079; data-to-parameter ratio = 18.2.

In the title compound, $\text{C}_{15}\text{H}_9\text{BrCl}_2\text{O}$, the two benzene rings are twisted from each other with a dihedral angle of $47.33(8)^\circ$. The crystal structure is stabilized by aromatic π - π interactions between the benzene rings of neighbouring molecules [centroid-centroid distance = $3.680(2)$ Å], and by weak intermolecular $\text{C}-\text{H}\cdots\text{O}$ and $\text{C}-\text{H}\cdots\text{Cl}$ interactions. Additionally, the crystal structure exhibits a short intramolecular $\text{C}-\text{H}\cdots\text{Br}$ contact ($\text{H}\cdots\text{Br} = 2.69$ Å).

Related literature

For background on chalcones as possible nonlinear optical materials, see: Harrison *et al.* (2006). For related structures with the same backbone and different substituents on the aromatic rings, see: Butcher *et al.* (2006, 2007); Dhanasekaran *et al.* (2007a,b); Fun *et al.* (2008).



Experimental

Crystal data

$\text{C}_{15}\text{H}_9\text{BrCl}_2\text{O}$
 $M_r = 356.03$
Monoclinic, $P2_1$
 $a = 7.7416(3)$ Å
 $b = 9.7981(4)$ Å
 $c = 9.6717(3)$ Å
 $\beta = 109.075(2)^\circ$

$V = 693.34(5)$ Å³
 $Z = 2$
Mo $K\alpha$ radiation
 $\mu = 3.34$ mm⁻¹
 $T = 120$ K
 $0.18 \times 0.16 \times 0.06$ mm

Data collection

Nonius KappaCCD diffractometer
Absorption correction: multi-scan
(*SADABS*; Bruker, 2003)
 $T_{\min} = 0.585$, $T_{\max} = 0.824$
12526 measured reflections
3129 independent reflections
2873 reflections with $I > 2\sigma(I)$
 $R_{\text{int}} = 0.040$

Refinement

$R[F^2 > 2\sigma(F^2)] = 0.036$
 $wR(F^2) = 0.079$
 $S = 1.04$
3129 reflections
172 parameters
1 restraint
H-atom parameters constrained
 $\Delta\rho_{\text{max}} = 1.20$ e Å⁻³
 $\Delta\rho_{\text{min}} = -0.46$ e Å⁻³
Absolute structure: Flack (1983),
1434 Friedel pairs
Flack parameter: 0.044 (9)

Table 1
Selected torsion angles ($^\circ$).

C6—C7—C8—C9	32.6 (5)	C7—C8—C9—C10	174.4 (4)
O1—C7—C8—Br1	31.2 (5)		

Table 2
Hydrogen-bond geometry (Å, $^\circ$).

$D-\text{H}\cdots A$	$D-\text{H}$	$\text{H}\cdots A$	$D\cdots A$	$D-\text{H}\cdots A$
C1—H1 \cdots O1 ⁱ	0.95	2.47	3.411 (5)	171
C11—H11 \cdots Cl1 ⁱⁱ	0.95	2.81	3.619 (4)	143
C15—H15 \cdots Br1	0.95	2.69	3.377 (4)	129

Symmetry codes: (i) $-x + 1, y - \frac{1}{2}, -z + 1$; (ii) $-x + 1, y - \frac{1}{2}, -z + 2$.

Data collection: *COLLECT* (Nonius, 1998); cell refinement: *SCALEPACK* (Otwinowski & Minor, 1997); data reduction: *DENZO* (Otwinowski & Minor, 1997), *SCALEPACK* and *SORTAV* (Blessing, 1995); program(s) used to solve structure: *SHELXS97* (Sheldrick, 2008); program(s) used to refine structure: *SHELXL97* (Sheldrick, 2008); molecular graphics: *ORTEP-3* (Farrugia, 1997); software used to prepare material for publication: *SHELXL97*.

We thank the EPSRC UK National Crystallography Service (University of Southampton) for the data collection.

Supplementary data and figures for this paper are available from the IUCr electronic archives (Reference: LX2111).

References

- Blessing, R. H. (1995). *Acta Cryst.* **A51**, 33–38.
Bruker (2003). *SADABS*. Bruker AXS Inc., Madison, Wisconsin, USA.
Butcher, R. J., Jasinski, J. P., Mayekar, A. N., Narayana, B. & Yathirajan, H. S. (2007). *Acta Cryst.* **E63**, o4308–o4309.
Butcher, R. J., Yathirajan, H. S., Anilkumar, H. G., Sarojini, B. K. & Narayana, B. (2006). *Acta Cryst.* **E62**, o1659–o1661.
Dhanasekaran, V., Gayathri, D., Velmurugan, D., Ravikumar, K. & Karthikeyan, M. S. (2007a). *Acta Cryst.* **E63**, o2060–o2061.
Dhanasekaran, V., Gayathri, D., Velmurugan, D., Ravikumar, K. & Karthikeyan, M. S. (2007b). *Acta Cryst.* **E63**, o2309–o2310.
Farrugia, L. J. (1997). *J. Appl. Cryst.* **30**, 565.
Flack, H. D. (1983). *Acta Cryst.* **A39**, 876–881.
Fun, H.-K., Jebas, S. R., Patil, P. S., Karthikeyan, M. S. & Dharmaprasanth, S. M. (2008). *Acta Cryst.* **E64**, o1559.
Harrison, W. T. A., Yathirajan, H. S., Sarojini, B. K., Narayana, B. & Vijaya Raj, K. K. (2006). *Acta Cryst.* **E62**, o1578–o1579.
Nonius (1998). *COLLECT*. Nonius BV, Delft, The Netherlands.
Otwinowski, Z. & Minor, W. (1997). *Methods in Enzymology*, Vol. 276, *Macromolecular Crystallography*, Part A, edited by C. W. Carter Jr & R. M. Sweet, pp. 307–326. New York: Academic Press.
Sheldrick, G. M. (2008). *Acta Cryst.* **A64**, 112–122.

supporting information

Acta Cryst. (2009). E65, o2648 [https://doi.org/10.1107/S160053680903815X]

2-Bromo-1,3-bis(4-chlorophenyl)prop-2-en-1-one

William T. A. Harrison, Q. N. M. Hakim Al-Arique, B. Narayana, H. S. Yathirajan and B. K. Sarojini

S1. Comment

As part of our ongoing investigations of chalcone derivatives as possible non-linear optical materials (Harrison *et al.*, 2006), we now report the synthesis and structure of the noncentrosymmetric title compound, (I), (Fig 1.).

The molecule adopts a twisted conformation with the dihedral angle between ring A (C1-C6) and ring B (C10-C15) being 47.33 (8)°. Some of the atoms bonded to the benzene rings deviate significantly from their attached ring planes: C11 and C7 deviate by 0.106 (5) and 0.140 (6) Å respectively from the mean plane of C1-C6 and C12 and C9 deviate by 0.028 (5) and 0.063 (6) Å from the mean plane of C10-C15. The dihedral angles between atoms C7/C8/C9 and ring planes A and B are 55.9 (2) and 20.1 (3)°, respectively. The strongly twisted conformation (Table 1) may arise, in part, to relieve the short intramolecular H1...H9 contact of 2.35 Å. A short intramolecular C-H...Br contact occurs (Table 1).

The crystal packing for (I) is influenced by weak intermolecular C-H...O and C-H...Cl interactions (Table 2), resulting in a noncentrosymmetric structure. The C-H...O links lead to chains propagating in [010], which appear to be reinforced by aromatic π - π stacking between the A and B rings [centroid-centroid separation = 3.680 (2) Å; inter-plane angle = 10.82 (19)°]. The weaker C-H...Cl interaction also generates [010] chains and together, the non-classical bonds lead to (100) sheets.

S2. Experimental

2,3-Dibromo-1,3-[bis(4-chlorophenyl)]-2-propan-1-one (4.32 g, 0.01 mol) was mixed with triethylamine (5 ml, 0.05 mol) in toluene (100 ml). The mixture was stirred well for 24 hrs and the precipitated ethylenedibromide was filtered off and the solvent was removed under reduced pressure. The resulting solid mass obtained on cooling was collected by filtration. The compound was dried and recrystallized four times with ethanol to yield colourless blocks of (I). Yield: 60%; m. p.: 325-328 K; analysis for C₁₅H₉BrCl₂O: found (calculated): C: 18.01 (18.02); H: 9.15 (9.07).

S3. Refinement

The H atoms were placed in calculated positions (C-H = 0.95 Å) and refined as riding with $U_{\text{iso}}(\text{H}) = 1.2U_{\text{eq}}(\text{C})$. The highest difference peak is 0.96 Å from O1.

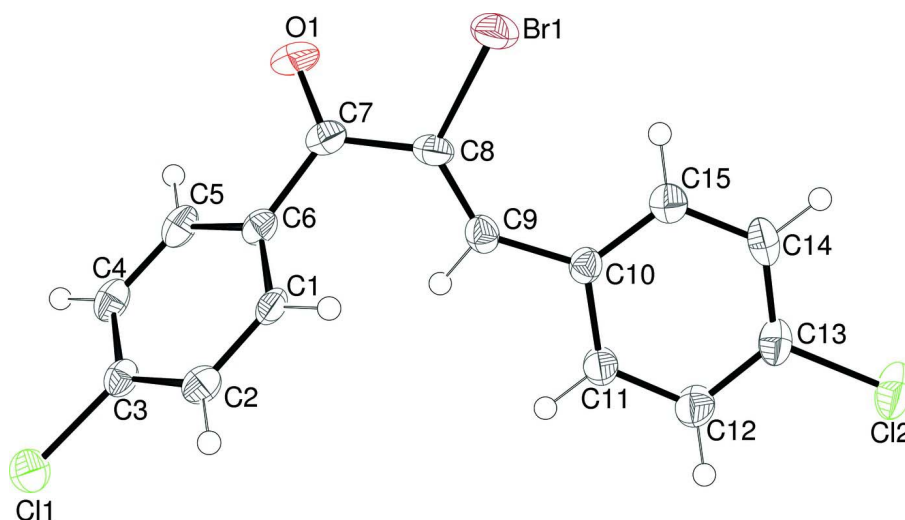


Figure 1

View of the molecular structure of (I) showing 50% displacement ellipsoids. The H atoms are drawn as spheres of arbitrary radius.

2-Bromo-1,3-bis(4-chlorophenyl)prop-2-en-1-one

Crystal data

$C_{15}H_9BrCl_2O$

$M_r = 356.03$

Monoclinic, $P2_1$

Hall symbol: P 2yb

$a = 7.7416$ (3) Å

$b = 9.7981$ (4) Å

$c = 9.6717$ (3) Å

$\beta = 109.075$ (2)°

$V = 693.34$ (5) Å³

$Z = 2$

$F(000) = 352$

$D_x = 1.705$ Mg m⁻³

Mo $K\alpha$ radiation, $\lambda = 0.71073$ Å

Cell parameters from 13953 reflections

$\theta = 2.9$ – 27.5 °

$\mu = 3.34$ mm⁻¹

$T = 120$ K

Block, colourless

$0.18 \times 0.16 \times 0.06$ mm

Data collection

Nonius KappaCCD

diffractometer

Radiation source: fine-focus sealed tube

Graphite monochromator

Detector resolution: 10.0 pixels mm⁻¹

ω and ϕ scans

Absorption correction: multi-scan

(*SADABS*; Bruker, 2003)

$T_{\min} = 0.585$, $T_{\max} = 0.824$

12526 measured reflections

3129 independent reflections

2873 reflections with $I > 2\sigma(I)$

$R_{\text{int}} = 0.040$

$\theta_{\max} = 27.5$ °, $\theta_{\min} = 3.1$ °

$h = -10 \rightarrow 10$

$k = -12 \rightarrow 12$

$l = -12 \rightarrow 12$

Refinement

Refinement on F^2

Least-squares matrix: full

$R[F^2 > 2\sigma(F^2)] = 0.036$

$wR(F^2) = 0.079$

$S = 1.04$

3129 reflections

172 parameters

1 restraint

Primary atom site location: structure-invariant direct methods

Secondary atom site location: difference Fourier map

Hydrogen site location: difference Fourier map

H-atom parameters constrained

$w = 1/[\sigma^2(F_o^2) + (0.0258P)^2 + 0.5496P]$

where $P = (F_o^2 + 2F_c^2)/3$

$(\Delta/\sigma)_{\max} < 0.001$
 $\Delta\rho_{\max} = 1.20 \text{ e } \text{\AA}^{-3}$
 $\Delta\rho_{\min} = -0.46 \text{ e } \text{\AA}^{-3}$

Absolute structure: Flack (1983), 1434 Friedel
 pairs
 Absolute structure parameter: 0.044 (9)

Special details

Geometry. All e.s.d.'s (except the e.s.d. in the dihedral angle between two l.s. planes) are estimated using the full covariance matrix. The cell e.s.d.'s are taken into account individually in the estimation of e.s.d.'s in distances, angles and torsion angles; correlations between e.s.d.'s in cell parameters are only used when they are defined by crystal symmetry. An approximate (isotropic) treatment of cell e.s.d.'s is used for estimating e.s.d.'s involving l.s. planes.

Refinement. Refinement of F^2 against ALL reflections. The weighted R -factor wR and goodness of fit S are based on F^2 , conventional R -factors R are based on F , with F set to zero for negative F^2 . The threshold expression of $F^2 > \sigma(F^2)$ is used only for calculating R -factors(gt) *etc.* and is not relevant to the choice of reflections for refinement. R -factors based on F^2 are statistically about twice as large as those based on F , and R -factors based on ALL data will be even larger.

Fractional atomic coordinates and isotropic or equivalent isotropic displacement parameters (\AA^2)

	<i>x</i>	<i>y</i>	<i>z</i>	$U_{\text{iso}}^*/U_{\text{eq}}$
C1	0.5669 (5)	0.6271 (3)	0.7407 (4)	0.0255 (8)
H1	0.5761	0.5621	0.6706	0.031*
C2	0.6586 (5)	0.6046 (4)	0.8887 (4)	0.0266 (8)
H2	0.7296	0.5245	0.9206	0.032*
C3	0.6438 (4)	0.7025 (4)	0.9891 (3)	0.0241 (6)
C4	0.5385 (5)	0.8181 (4)	0.9458 (4)	0.0288 (8)
H4	0.5283	0.8825	1.0160	0.035*
C5	0.4479 (5)	0.8387 (4)	0.7982 (4)	0.0292 (8)
H5	0.3753	0.9182	0.7670	0.035*
C6	0.4622 (5)	0.7436 (3)	0.6945 (4)	0.0250 (8)
C7	0.3742 (5)	0.7800 (4)	0.5351 (4)	0.0277 (8)
C8	0.3109 (5)	0.6665 (4)	0.4271 (4)	0.0271 (8)
C9	0.2468 (5)	0.5475 (4)	0.4610 (4)	0.0252 (8)
H9	0.2575	0.5416	0.5615	0.030*
C10	0.1645 (5)	0.4256 (4)	0.3785 (4)	0.0237 (7)
C11	0.1567 (5)	0.3124 (4)	0.4629 (4)	0.0304 (8)
H11	0.2057	0.3188	0.5665	0.037*
C12	0.0786 (5)	0.1897 (4)	0.3994 (4)	0.0341 (9)
H12	0.0774	0.1119	0.4578	0.041*
C13	0.0028 (5)	0.1849 (4)	0.2478 (4)	0.0303 (8)
C14	0.0093 (5)	0.2951 (4)	0.1604 (4)	0.0316 (9)
H14	-0.0427	0.2890	0.0570	0.038*
C15	0.0928 (5)	0.4146 (4)	0.2258 (4)	0.0276 (8)
H15	0.1016	0.4899	0.1665	0.033*
O1	0.3501 (5)	0.8986 (3)	0.4961 (3)	0.0440 (8)
Cl1	0.76953 (13)	0.67976 (9)	1.17307 (9)	0.0352 (2)
Cl2	-0.10057 (15)	0.03386 (11)	0.16691 (12)	0.0460 (3)
Br1	0.31668 (5)	0.71253 (4)	0.23765 (4)	0.03793 (12)

Atomic displacement parameters (\AA^2)

	U^{11}	U^{22}	U^{33}	U^{12}	U^{13}	U^{23}
C1	0.0331 (19)	0.0179 (17)	0.0270 (17)	-0.0089 (15)	0.0120 (15)	-0.0038 (14)
C2	0.0268 (18)	0.0234 (18)	0.0321 (19)	0.0006 (15)	0.0130 (15)	-0.0016 (15)
C3	0.0265 (15)	0.0222 (16)	0.0272 (14)	-0.0041 (17)	0.0138 (12)	-0.0040 (17)
C4	0.0303 (19)	0.0246 (18)	0.037 (2)	-0.0052 (16)	0.0185 (16)	-0.0088 (16)
C5	0.0298 (19)	0.0202 (18)	0.040 (2)	-0.0016 (15)	0.0142 (17)	-0.0070 (16)
C6	0.0219 (16)	0.023 (2)	0.0308 (17)	-0.0049 (13)	0.0095 (13)	0.0000 (14)
C7	0.0249 (18)	0.0258 (19)	0.0325 (19)	-0.0014 (15)	0.0094 (15)	0.0036 (16)
C8	0.0251 (17)	0.031 (2)	0.0248 (17)	-0.0008 (14)	0.0068 (14)	0.0095 (14)
C9	0.0223 (17)	0.0268 (19)	0.0232 (16)	0.0026 (15)	0.0028 (14)	-0.0031 (15)
C10	0.0208 (16)	0.0231 (18)	0.0252 (17)	-0.0012 (14)	0.0049 (14)	-0.0020 (14)
C11	0.038 (2)	0.031 (2)	0.0240 (17)	-0.0122 (17)	0.0122 (16)	-0.0030 (16)
C12	0.041 (2)	0.033 (2)	0.0329 (17)	-0.0120 (19)	0.0179 (16)	-0.0028 (18)
C13	0.0268 (17)	0.034 (2)	0.0318 (16)	-0.0077 (16)	0.0124 (14)	-0.0120 (17)
C14	0.0270 (19)	0.038 (2)	0.0254 (18)	0.0029 (16)	0.0022 (15)	-0.0114 (17)
C15	0.0248 (18)	0.0290 (19)	0.0282 (18)	0.0011 (15)	0.0077 (15)	-0.0005 (16)
O1	0.075 (2)	0.0152 (13)	0.0357 (15)	-0.0042 (14)	0.0097 (15)	0.0106 (12)
Cl1	0.0448 (5)	0.0336 (6)	0.0279 (4)	-0.0016 (4)	0.0131 (4)	-0.0049 (4)
Cl2	0.0468 (6)	0.0417 (6)	0.0522 (6)	-0.0183 (5)	0.0199 (5)	-0.0197 (5)
Br1	0.0425 (2)	0.0432 (2)	0.02831 (17)	-0.0063 (2)	0.01189 (14)	0.01032 (19)

Geometric parameters (\AA , $^\circ$)

C1—C6	1.387 (5)	C8—Br1	1.902 (3)
C1—C2	1.392 (5)	C9—C10	1.462 (5)
C1—H1	0.9500	C9—H9	0.9500
C2—C3	1.397 (5)	C10—C11	1.391 (5)
C2—H2	0.9500	C10—C15	1.402 (5)
C3—C4	1.378 (5)	C11—C12	1.395 (5)
C3—Cl1	1.741 (3)	C11—H11	0.9500
C4—C5	1.384 (5)	C12—C13	1.391 (5)
C4—H4	0.9500	C12—H12	0.9500
C5—C6	1.399 (5)	C13—C14	1.382 (6)
C5—H5	0.9500	C13—Cl2	1.742 (4)
C6—C7	1.510 (5)	C14—C15	1.387 (6)
C7—O1	1.217 (5)	C14—H14	0.9500
C7—C8	1.495 (5)	C15—H15	0.9500
C8—C9	1.349 (5)		
C6—C1—C2	120.6 (3)	C7—C8—Br1	113.0 (2)
C6—C1—H1	119.7	C8—C9—C10	134.7 (3)
C2—C1—H1	119.7	C8—C9—H9	112.7
C1—C2—C3	118.4 (3)	C10—C9—H9	112.7
C1—C2—H2	120.8	C11—C10—C15	118.7 (3)
C3—C2—H2	120.8	C11—C10—C9	115.2 (3)
C4—C3—C2	121.8 (3)	C15—C10—C9	126.1 (3)

C4—C3—C11	119.6 (3)	C10—C11—C12	121.6 (3)
C2—C3—C11	118.5 (3)	C10—C11—H11	119.2
C3—C4—C5	119.0 (3)	C12—C11—H11	119.2
C3—C4—H4	120.5	C13—C12—C11	117.8 (4)
C5—C4—H4	120.5	C13—C12—H12	121.1
C4—C5—C6	120.6 (3)	C11—C12—H12	121.1
C4—C5—H5	119.7	C14—C13—C12	122.1 (4)
C6—C5—H5	119.7	C14—C13—C12	119.5 (3)
C1—C6—C5	119.5 (3)	C12—C13—C12	118.4 (3)
C1—C6—C7	123.0 (3)	C13—C14—C15	119.1 (3)
C5—C6—C7	117.3 (3)	C13—C14—H14	120.5
O1—C7—C8	120.8 (3)	C15—C14—H14	120.5
O1—C7—C6	121.0 (3)	C14—C15—C10	120.7 (4)
C8—C7—C6	118.2 (3)	C14—C15—H15	119.7
C9—C8—C7	122.4 (3)	C10—C15—H15	119.7
C9—C8—Br1	124.4 (3)		
C6—C1—C2—C3	-0.6 (5)	O1—C7—C8—Br1	31.2 (5)
C1—C2—C3—C4	1.4 (5)	C6—C7—C8—Br1	-151.1 (3)
C1—C2—C3—C11	-176.1 (3)	C7—C8—C9—C10	174.4 (4)
C2—C3—C4—C5	-1.3 (5)	Br1—C8—C9—C10	-1.5 (6)
C11—C3—C4—C5	176.2 (3)	C8—C9—C10—C11	165.5 (4)
C3—C4—C5—C6	0.2 (5)	C8—C9—C10—C15	-15.5 (7)
C2—C1—C6—C5	-0.4 (5)	C15—C10—C11—C12	-0.4 (6)
C2—C1—C6—C7	174.1 (3)	C9—C10—C11—C12	178.7 (3)
C4—C5—C6—C1	0.6 (5)	C10—C11—C12—C13	-2.0 (6)
C4—C5—C6—C7	-174.3 (3)	C11—C12—C13—C14	2.5 (5)
C1—C6—C7—O1	-149.5 (4)	C11—C12—C13—C12	-178.3 (3)
C5—C6—C7—O1	25.2 (5)	C12—C13—C14—C15	-0.5 (5)
C1—C6—C7—C8	32.8 (5)	C12—C13—C14—C15	-179.6 (3)
C5—C6—C7—C8	-152.5 (3)	C13—C14—C15—C10	-2.1 (5)
O1—C7—C8—C9	-145.1 (4)	C11—C10—C15—C14	2.5 (5)
C6—C7—C8—C9	32.6 (5)	C9—C10—C15—C14	-176.5 (4)

Hydrogen-bond geometry (\AA , $^\circ$)

$D-H\cdots A$	$D-H$	$H\cdots A$	$D\cdots A$	$D-H\cdots A$
C1—H1 \cdots O1 ⁱ	0.95	2.47	3.411 (5)	171
C11—H11 \cdots C11 ⁱⁱ	0.95	2.81	3.619 (4)	143
C15—H15 \cdots Br1	0.95	2.69	3.377 (4)	129

Symmetry codes: (i) $-x+1, y-1/2, -z+1$; (ii) $-x+1, y-1/2, -z+2$.